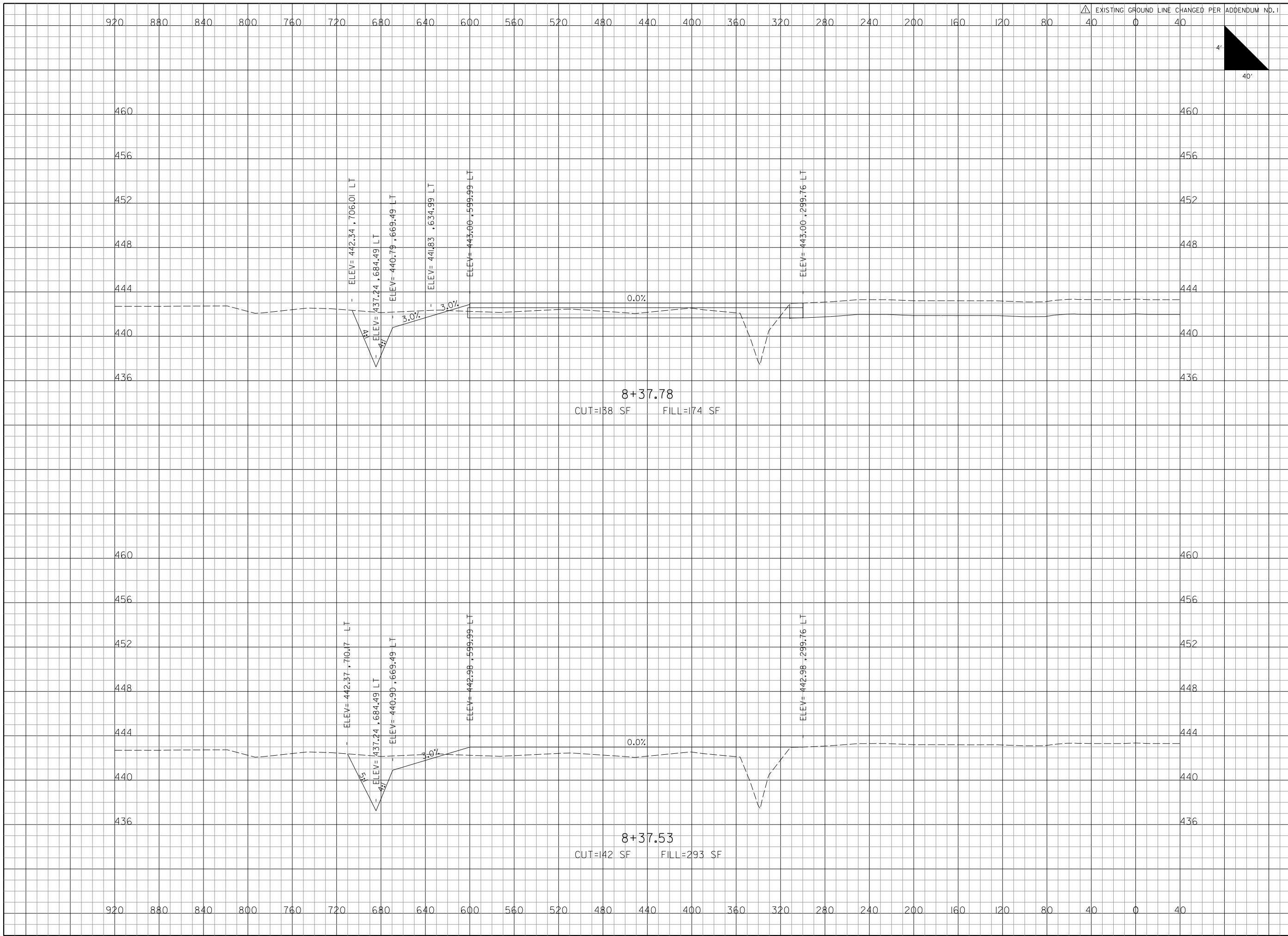


I:\3\2012
K:\MidAmericaAp\100980L Mike_Apron\Draw\Sheets\Contract_1\40-57_XS_Mike.dgn



| REVISIONS | | |
|-----------|-----|--------|
| NUMBER | BY | DATE |
| △ | BWG | 1/3/12 |
| | | |
| | | |

0 1 2
THIS BAR IS EQUAL TO 2"
AT FULL SCALE (34X22).
PLOT 1

**MIDAMERICA ST. LOUIS AIRPORT
ST. CLAIR COUNTY, ILLINOIS**

**MIKE APRON EXPANSION
BASE BID**

ONE MEMORIAL DRIVE, SUITE 500
ST. LOUIS, MO 6302
(314) 436-9500

CMT
CRAWFORD, MURPHY & TILLY, INC.
CONSULTING ENGINEERS
© Copyright CMT, Inc.
PROFESSIONAL ENGINEERING - 000613

**IL PROJECT: BLV-4061
AIP PROJ: 3-17-0146-029-2011**

| |
|--|
| FILE: 40-57_XS_Mike.dgn |
| DESIGN BY: LEW |
| DRAWN BY: LEW |
| CHECKED BY: CET |
| APPROVED BY: BWG |
| DATE: NOVEMBER 28, 2011 |
| JOB No: 10098-01 |
| MIKE APRON EXPANSION CROSS SECTIONS SHEET 8 OF 18 |
| SHEET 47 OF 89 SHEETS |