

LEGEND

- 440 — EXISTING CONTOUR
- 440 — PROPOSED CONTOUR
- > — EXISTING STORM SEWER
- > — PROPOSED STORM SEWER
- > — EXISTING GLYCOL DISPOSAL
- > — PROPOSED GLYCOL DISPOSAL
- > — EXISTING UNDERDRAIN
- > — PROPOSED UNDERDRAIN
- E — EXISTING ELECTRIC LINE
- CO PROPOSED UNDERDRAIN CLEANOUT
- CS PROPOSED UNDERDRAIN COLLECTION STRUCTURE
- CP PROPOSED UNDERDRAIN COLLECTION POINT
- DC PROPOSED UNDERDRAIN DIRECT CONNECTION

- NOTES:**
1. COLLECTION POINTS CONSIST OF A 4-WAY PVC FITTING AND SHALL BE CONSIDERED INCIDENTAL TO THE UNDERDRAIN WORK.
 2. DIRECT CONNECTIONS SHALL BE CONSIDERED INCIDENTAL TO THE UNDER DRAIN WORK.
 3. CONSTRUCT CONCRETE HEADWALL FOR PIPE DRAIN IN ACCORDANCE WITH IDOT STANDARD 601101-01 (INCIDENTAL TO UNDERDRAIN WORK).
 4. THE EXISTING GROUND MAY CHANGE PRIOR TO THE START OF CONSTRUCTION DUE TO EARTHWORK OPERATIONS ADJACENT TO THIS PROJECT. IF THE EXISTING GROUND DOES CHANGE, THE GROUND WILL BE SURVEYED BY THE ENGINEER PRIOR TO THE START OF GRADING OPERATIONS FOR THIS CONTRACT AND THE EXISTING GROUND LINE ON THE CROSS SECTIONS WILL BE UPDATED.

SEE BASE BID DRAINAGE DETAILS SHEETS FOR DRAINAGE DETAILS.

STORM SEWER SCHEDULE

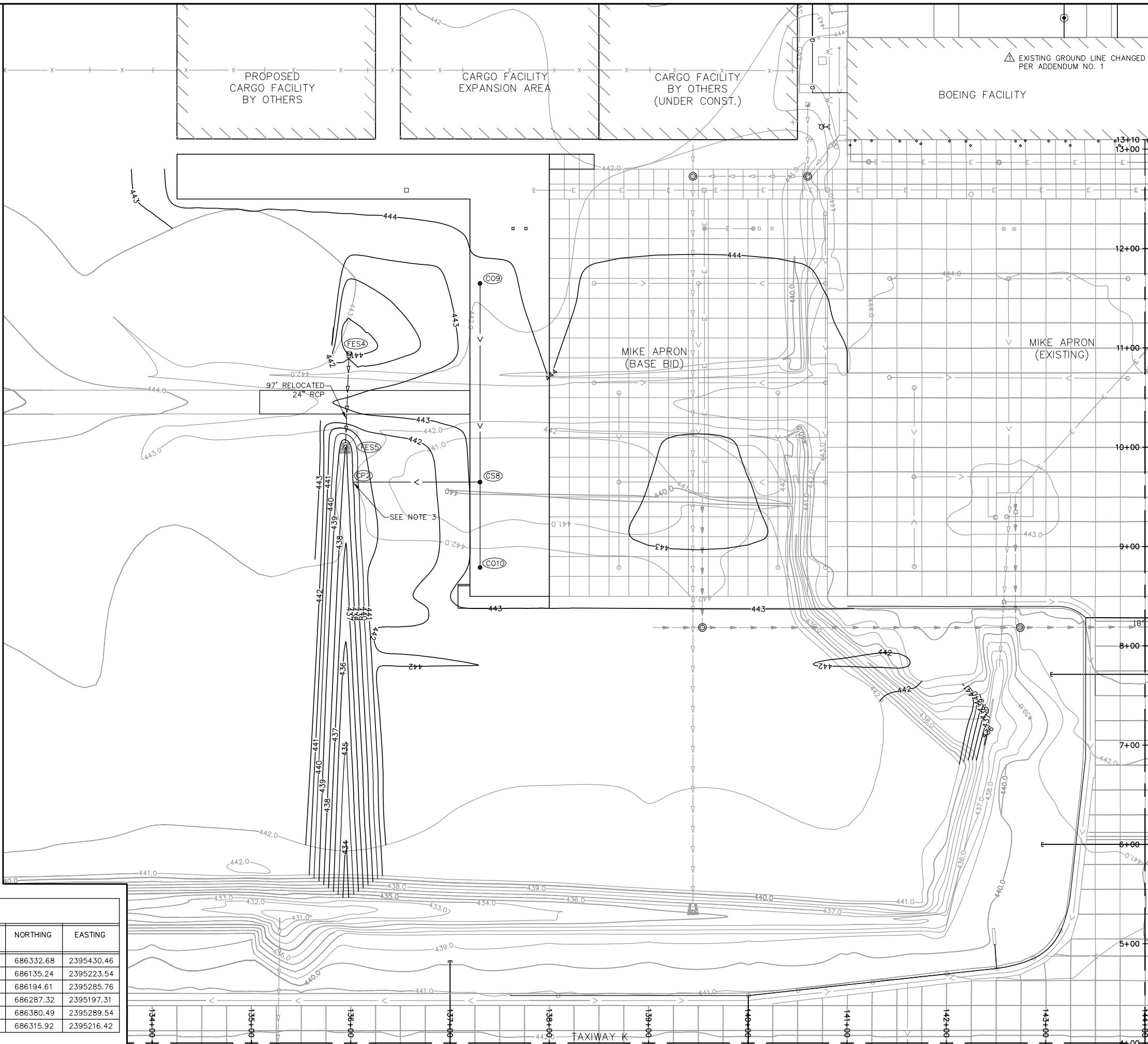
REACH	PIPE SIZE/TYPE	LENGTH FOR PAYMENT (FT)	LENGTH W/ FES (FT)	SLOPE
FES4 - FES5	24"/RCP	85	97	3.09%

UNDERDRAIN SCHEDULE

REACH	PIPE SIZE/TYPE	LENGTH (FT)	SLOPE
CO9 - CS8	6"/PVC	200	0.50%
CS8 - CP2	6"/PVC	128	0.50%
CO10 - CS5	6"/PVC	86	0.50%

STRUCTURE SCHEDULE

STRUCTURE NUMBER	RIM ELEV	INVERT ELEV	STATION	OFFSET	NORTHING	EASTING
CO9	443.86	440.64	11+64.79	669.82 LT	686332.68	2395430.46
CO10	443.21	440.07	8+78.79	669.82 LT	686135.24	2395223.54
CS8	443.22	439.64	9+64.79	669.82 LT	686194.61	2395285.76
CP2	---	439.00	9+64.79	797.95 LT	686287.32	2395197.31
FES4	---	441.00	10+95.83	801.69 LT	686380.49	2395289.54
FES5	---	438.00	9+98.36	805.45 LT	686315.92	2395216.42



REVISIONS

NUMBER	BY	DATE
1	BWG	1/3/12

0 1 2
THIS BAR IS EQUAL TO 2" AT FULL SCALE (34X22). PLOT 1

**MIDAMERICA ST. LOUIS AIRPORT
ST. CLAIR COUNTY, ILLINOIS**

**MIKE APRON EXPANSION
ADDITIVE ALTERNATE 1**

ONE MEMORIAL DRIVE, SUITE 500
ST. LOUIS, MO 63102
(314) 436-5500

CMT
CRAWFORD, MURPHY & TILLY, INC.
CONSULTING ENGINEERS

© Copyright CMT, Inc.
PROFESSIONAL ENGINEERING - 184-00613

**IL PROJECT: BLV-4061
AIP PROJ. 3-17-0146-029-2011**

FILE: 64_GRADING.dwg

DESIGN BY: LEW
DRAWN BY: ASA
CHECKED BY: MJD/CET
APPROVED BY: BWG
DATE: NOVEMBER 28, 2011
JOB No: 10098-01