

URBAN 80% FEDERAL
20% STATE

SUMMARY OF QUANTITIES				CONSTRUCTION TYPE CODE								
CODE NO	ITEM	UNIT	TOTAL QUANTITIES	0005 ROADWAY								
20033700	LONGITUDINAL JOINT SEALANT	FOOT	45550	45550								

SUMMARY OF QUANTITIES				CONSTRUCTION TYPE CODE								
CODE NO	ITEM	UNIT	TOTAL QUANTITIES	0005 ROADWAY								

△

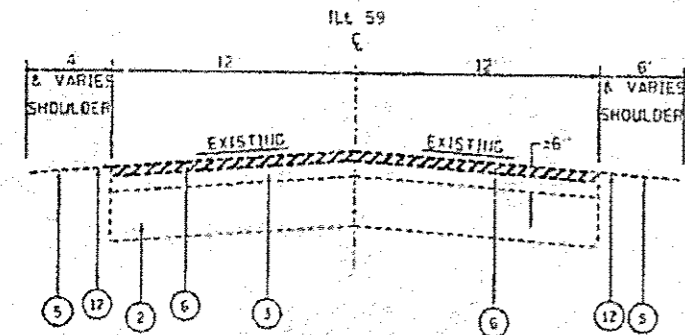
• SPECIALTY ITEMS
NON-PARTICIPATING ITEMS

FILE NAME : d:\p\work\carroll\road\0406185\0406185.spr	USER NAME : carroll	DESIGNED : DRAWN : CHECKED : DATE :	REVISED : REVISED : REVISED : REVISED :
---	------------------------	--	--

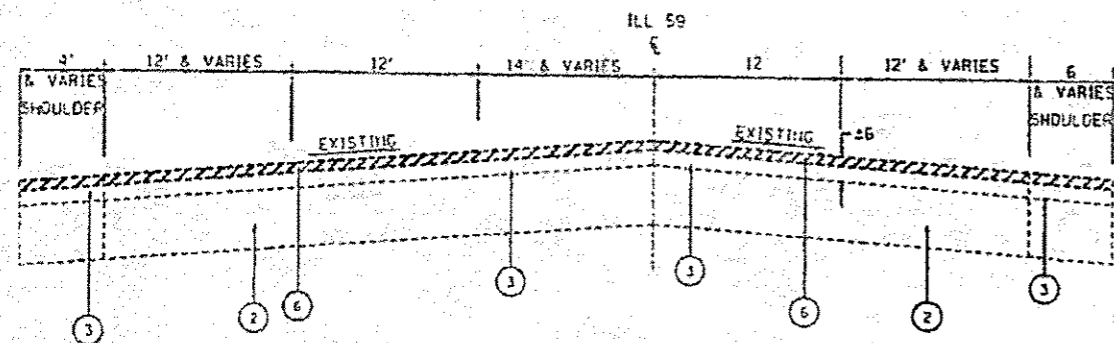
STATE OF ILLINOIS
DEPARTMENT OF TRANSPORTATION

IL 59 SUMMARY OF QUANTITIES				F.A.P. RTE. 33B	SECTION 1631.631X&10B1R5-7	COUNTY COOK	TOTAL SHEETS 32	SHEET NO. 5
SCALE:	SHEET NO.	OF	SHEETS	STA.	TO STA.		CONTRACT NO. 62C39	
FED. ROAD DIST. NO. 1 ILLINOIS FED. AID PROJECT								

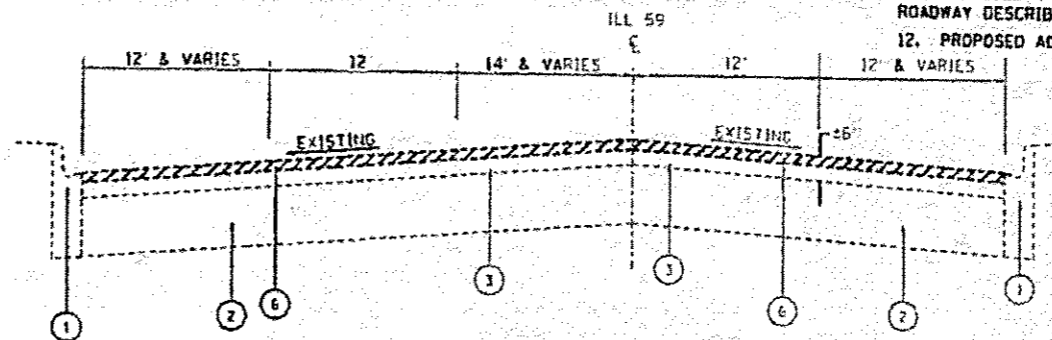
△ Rev 1-08-17



EXISTING TYPICAL SECTION
 STA. 43+31 TO STA. 55+33
 STA. 71+36 TO STA. 85+02
 STA. 101+38 TO STA. 138+29
 STA. 250+00 TO STA. 324+51



EXISTING TYPICAL SECTION
 STA. 28+75 TO STA. 43+31
 STA. 55+33 TO STA. 71+36
 STA. 85+02 TO STA. 101+38
 STA. 138+29 TO STA. 144+18
 STA. 242+95 TO STA. 250+00



EXISTING TYPICAL SECTION
 STA. 144+18 TO STA. 150+97
 STA. 174+54 TO STA. 181+00

LEGEND

1. EXISTING COMBINATION CONCRETE CURB AND GUTTER
2. EXISTING P.C. CONCRETE BASE COURSE ± 10"
3. EXISTING HMA SURFACE COURSE ± 6"
4. EXISTING AGGREGATE SUBGRADE ± 12"
5. EXISTING AGGREGATE SHOULDER
6. PROPOSED HMA SURFACE REMOVAL, 2 1/2"
7. PROPOSED AGGREGATE SHOULDER (WHERE NECESSARY)
8. PROPOSED COMBINATION CONCRETE CURB AND GUTTER (WHERE NECESSARY)
9. PROPOSED POLYMERIZED LEVELING BINDER (MACHINE METHOD), IL-4.75, NS0, 7/4"
10. PROPOSED HMA SURFACE COURSE, POLY. HMA SURFACE COURSE, MIX "E", N70, 1 1/2"
11. PROPOSED HMA LONGITUDINAL JOINT SEALANT (SHALL BE APPLIED ON THE ROADWAY DESCRIBED IN THE SPECIAL PROVISION)
12. PROPOSED AGGREGATE SHOULDER REMOVAL

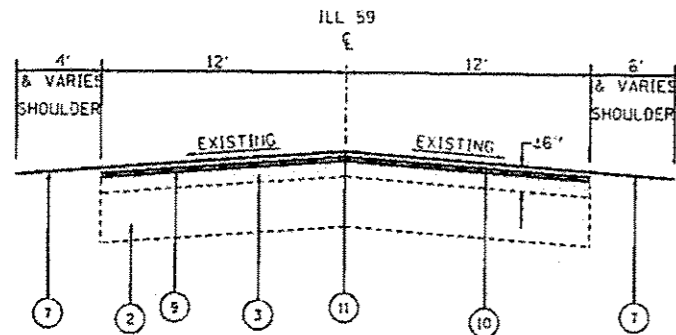
HOT-MIX ASPHALT MIXTURE REQUIREMENTS		QUALITY MANAGEMENT PROGRAM (QMP)
MIXTURE TYPE	AIR VOIDS(%) @ Ndes	
PAVEMENT RESURFACING		
POLY. HMA SURFACE COURSE, MIX "E", N70 (IL 9.5 mm)	4% @ 70 GYR.	OCP
POLYMERIZED LEVELING BINDER (MM), IL-4.75, NS0	3.5% @ 50 GYR.	OCP
PATCHING		
CLASS D PATCHES (HMA BINDER IL-19 mm)	4% @ 70 GYR.	OC/OA
HMA REPLACEMENT OVER PATCHES (HMA BINDER IL-19 mm)	4% @ 70 GYR.	OC/OA
SHOULDERS		
POLY. HMA SURFACE COURSE, MIX "E", N70 (IL 9.5 mm)	4% @ 70 GYR.	OC/OA
POLYMERIZED LEVELING BINDER (MM), IL-4.75, NS0	3.5% @ 50 GYR.	OCP
QMP DESIGNATION: QUALITY CONTROL/QUALITY ASSURANCE (OC/OA); QUALITY CONTROL FOR PERFORMANCE (OCP); PAY FOR PERFORMANCE (PFP)		

NOTE 1: THE UNIT WEIGHT USED TO CALCULATE ALL HOT-MIX ASPHALT SURFACE MIXTURE QUANTITIES IS 112 LBS/SQ YD/IN.
 NOTE 2: THE "AC TYPE" FOR POLYMERIZED HMA MIXES SHALL BE "SBS/SBR PG 76 -22" AND AND FOR NON-POLYMERIZED HMA THE "AC TYPE" SHALL BE "PG 64 -22" UNLESS MODIFIED BY DISTRICT ONE SPECIAL PROVISIONS.
 FOR USE OF RECYCLED MATERIALS SEE DISTRICT ONE SPECIAL PROVISIONS.
 QUALITY MANAGEMENT PROGRAM (QMP) IDENTIFIES THE PARTICULAR QUALITY CONTROL SPECIFICATION THAT APPLIES TO THE HMA MIXTURE

NOTE
 THE CONTRACTOR SHALL PATCH FIRST BEFORE MILLING

△ Rev 1-5-17

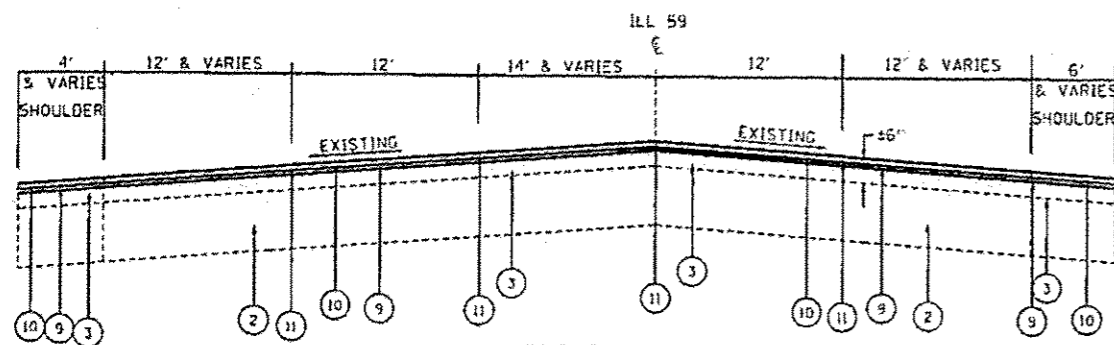
FILE NAME: 01-000000.dwg	USER NAME: jburkhardt	DESIGNED: []	REVISION: []	STATE OF ILLINOIS DEPARTMENT OF TRANSPORTATION	ILL 59 EXISTING & PROPOSED TYPICAL SECTIONS	F.A.P. RATE: 330 SECTION: (631.631)X108/RS-7 COUNTY: COOK TOTAL SHEETS: 32 SHEET NO.: 6
PLT1 SCALE: 1/8"=1'-0"	PLT1 DATE: 11/2/2016	DRAWN: []	REVISION: []			
		CHECKED: []	REVISION: []			
		DATE: []	REVISION: []			
				SCALE: []	SHEET NO. 1 OF 1 SHEETS	STA. TO STA.
				FED. ROAD DIST. NO. 1 ILLINOIS/FED. AID PROJECT		CONTRACT NO. 62C39



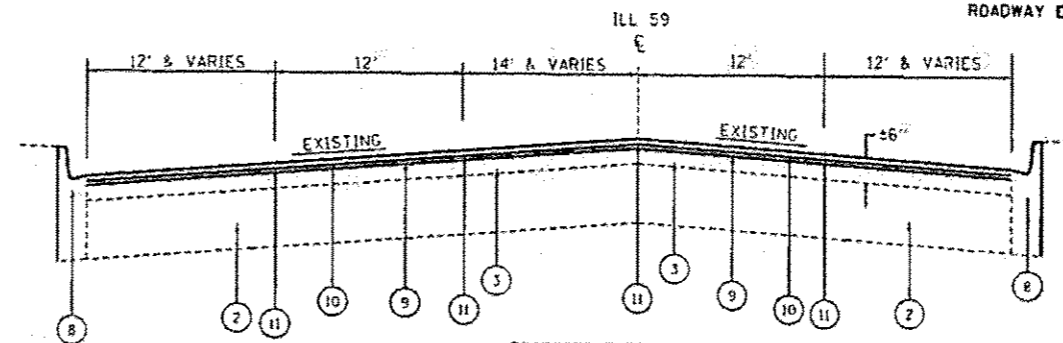
PROPOSED TYPICAL SECTION
 STA. 43+31 TO STA. 55+33
 STA. 71+36 TO STA. 85+02
 STA. 101+38 TO STA. 138+29
 STA. 250+00 TO STA. 324+51

LEGEND

1. EXISTING COMBINATION CONCRETE CURB AND GUTTER
2. EXISTING P.C. CONCRETE BASE COURSE ± 10"
3. EXISTING HMA SURFACE COURSE ± 6"
4. EXISTING AGGREGATE SUBGRADE ± 12"
5. EXISTING AGGREGATE SHOULDER
6. PROPOSED HMA SURFACE REMOVAL, 2 1/2"
7. PROPOSED AGGREGATE SHOULDER (WHERE NECESSARY)
8. PROPOSED COMBINATION CONCRETE CURB AND GUTTER (WHERE NECESSARY)
9. PROPOSED POLYMERIZED LEVELING BINDER (MACHINE METHOD), IL-475, 850.3/4"
10. PROPOSED HMA SURFACE COURSE, POLY HMA SURFACE COURSE, MIX "E" MIN "B", 870.13/4"
11. PROPOSED HMA LONGITUDINAL JOINT SEALANT (SHALL BE APPLIED ON THE ROADWAY DESCRIBED IN THE SPECIAL PROVISION)



PROPOSED TYPICAL SECTION
 STA. 28+75 TO STA. 43+31
 STA. 55+33 TO STA. 71+36
 STA. 85+02 TO STA. 101+38
 STA. 138+29 TO STA. 144+18
 STA. 242+95 TO STA. 250+00



PROPOSED TYPICAL SECTION
 STA. 144+18 TO STA. 150+97
 STA. 174+54 TO STA. 181+00

NOTE

THE CONTRACTOR SHALL PATCH FIRST BEFORE MILLING

Rev 1-05-17

FILE NAME *	USER NAME *	DESIGNED -	REVISED -	STATE OF ILLINOIS DEPARTMENT OF TRANSPORTATION	ILL 59 EXISTING & PROPOSED TYPICAL SECTIONS	F.A.P. RTE.	SECTION	COUNTY	TOTAL SHEETS	SHEET NO.	
		DRAWN -	REVISED -			338	(631.631X108)RS-7	COOK	32	7	
		CHECKED -	REVISED -			CONTRACT NO. 62C39					
		DATE -	REVISED -			FED. ROAD DIST. NO. 1 ILLINOIS FED. AID PROJECT					
PLOT SCALE = 1/8" = 1'-0"		PLOT DATE = 10/25/2016		SCALE: SHEET NO. 1 OF 1 SHEETS		STA. TO STA.					