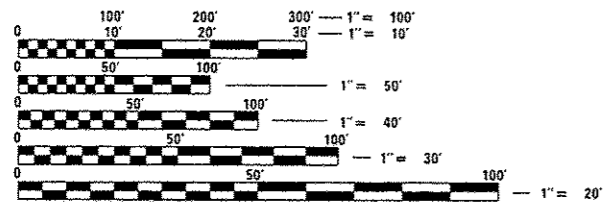


INDEX OF SHEETS

1. COVER SHEET
2. COUNTY LAYOUT MAPS
3. GENERAL NOTES, LEGEND AND SCHEDULES
- 4.-5. SUMMARY OF QUANTITIES
- 6.-136. INTERSECTION LOCATION MAPS, TRAFFIC SIGNAL PLANS AND CABLE DIAGRAMS (FOR "INDEX OF SHEETS PER LOCAL AGENCY (COUNTY) INTERSECTION" SEE SHEET 2)

STANDARDS

000001-06	701701-10	701801-06
701901-06	814001-03	878001-10
880006-01		



FULL SIZE PLANS HAVE BEEN PREPARED USING STANDARD ENGINEERING SCALES. REDUCED SIZED PLANS WILL NOT CONFORM TO STANDARD SCALES. IN MAKING MEASUREMENTS ON REDUCED PLANS, THE ABOVE SCALES MAY BE USED.

J.U.L.I.E.
JOINT UTILITY LOCATION INFORMATION FOR EXCAVATION
1-800-892-0123
OR 811

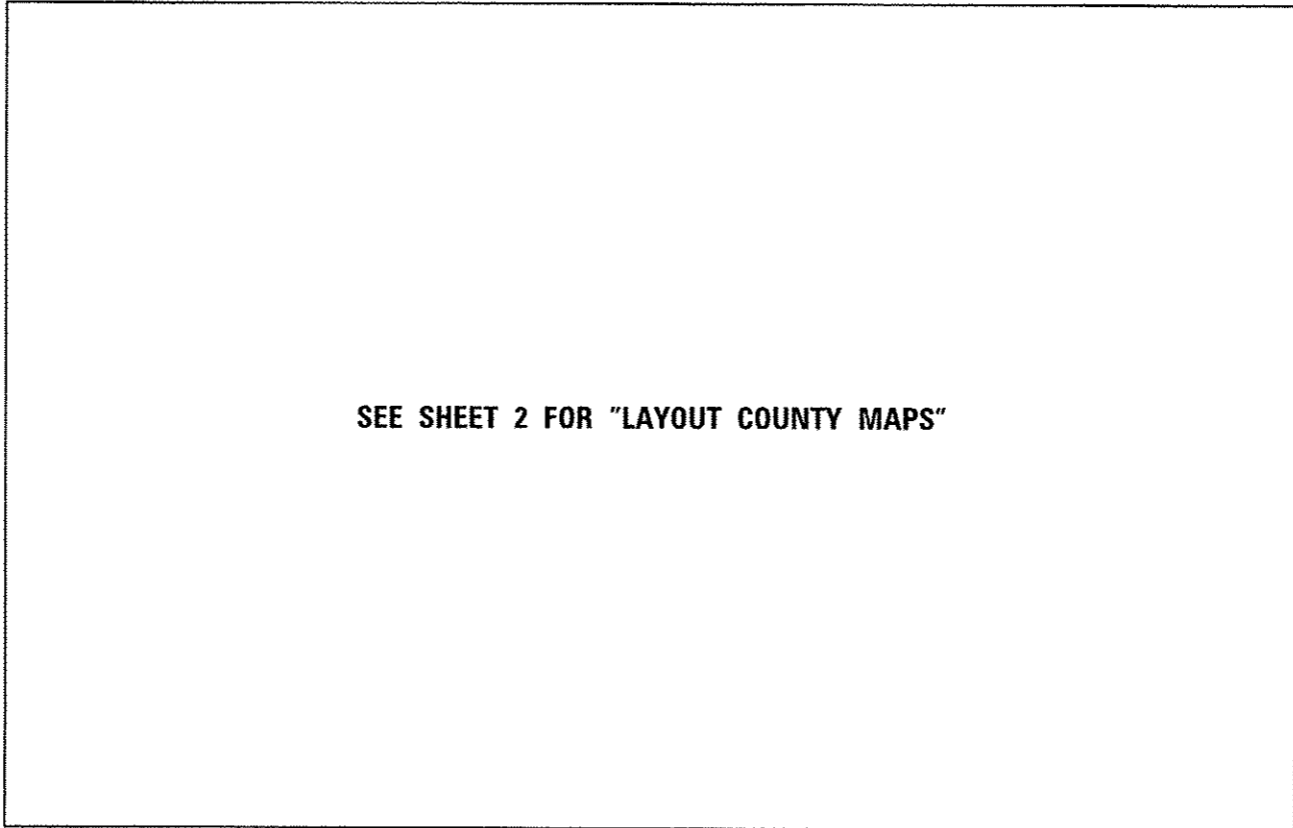
PROJECT ENGINEER: HERVE GELIN (618) 346-3179
SQUAD LEADER: MICHAEL PRESTON (618) 346-3143

CONTRACT NO. 76J22

STATE OF ILLINOIS
DEPARTMENT OF TRANSPORTATION
DIVISION OF HIGHWAYS
**PROPOSED
HIGHWAY PLANS**

VARIOUS ROUTES
SECTION DIST 8 TS 2017-1
PROJECT ACHSIP-000V(088)
INSTALLATION OF NEAR-RIGHT &
FAR-LEFT TRAFFIC SIGNAL
INDICATIONS
MADISON & ST. CLAIR COUNTIES

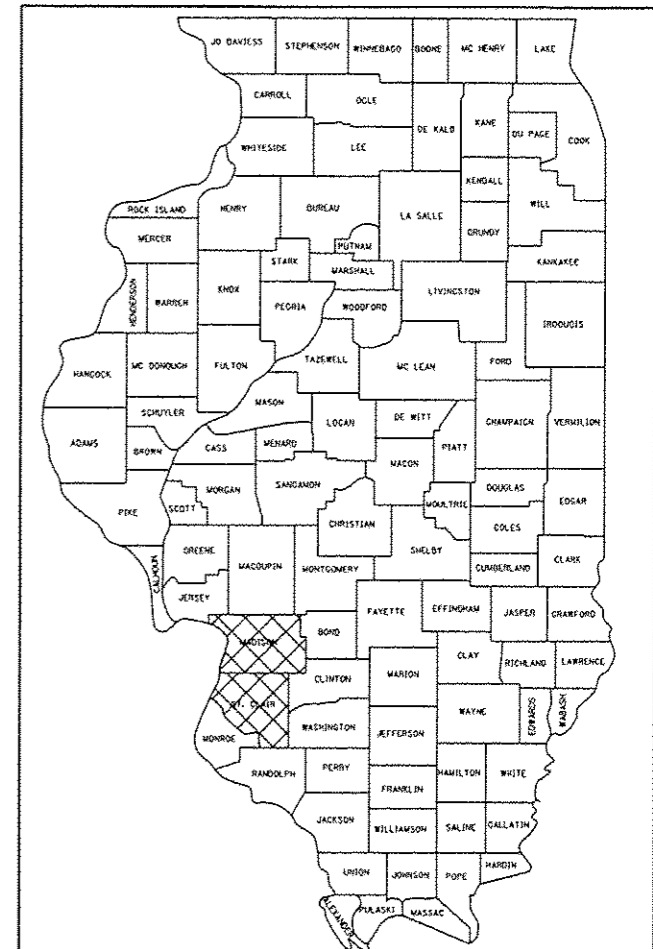
C-98-064-15



SEE SHEET 2 FOR "LAYOUT COUNTY MAPS"

* 136+1 = 137 TOTAL SHEETS				
RTE.	SECTION	COUNTY	TOTAL SHEETS	SHEET NO.
*	DIST 8 TS 2017-1	**	136	1
**=VARIOUS ILLINOIS			CONTRACT NO. 76J22	
**=MADISON & ST. CLAIR				

D-98-075-15



LOCATION OF SECTION INDICATED THUS: -

STATE OF ILLINOIS
DEPARTMENT OF TRANSPORTATION
DIVISION OF HIGHWAYS

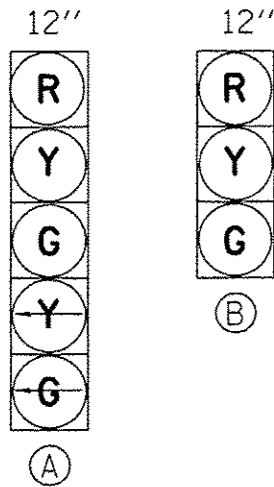
SUBMITTED Oct 14 2016
Jeffrey Z. Kamin
REGIONAL ENGINEER

Dec 9 2016
Muhammad M. Addis, P.E.
ENGINEER OF DESIGN AND ENVIRONMENT

Dec 9 2016
Chris Eschen
DIRECTOR OF HIGHWAYS/CHIEF ENGINEER

**PRINTED BY THE AUTHORITY
OF THE STATE OF ILLINOIS**

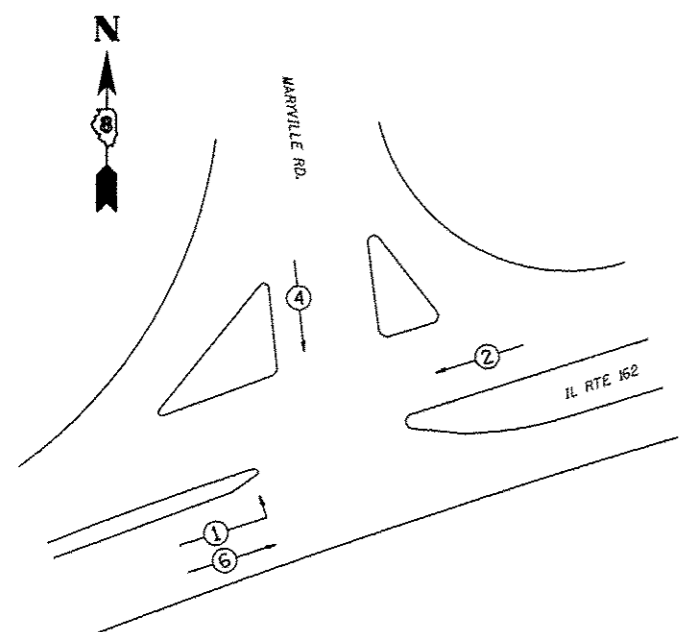
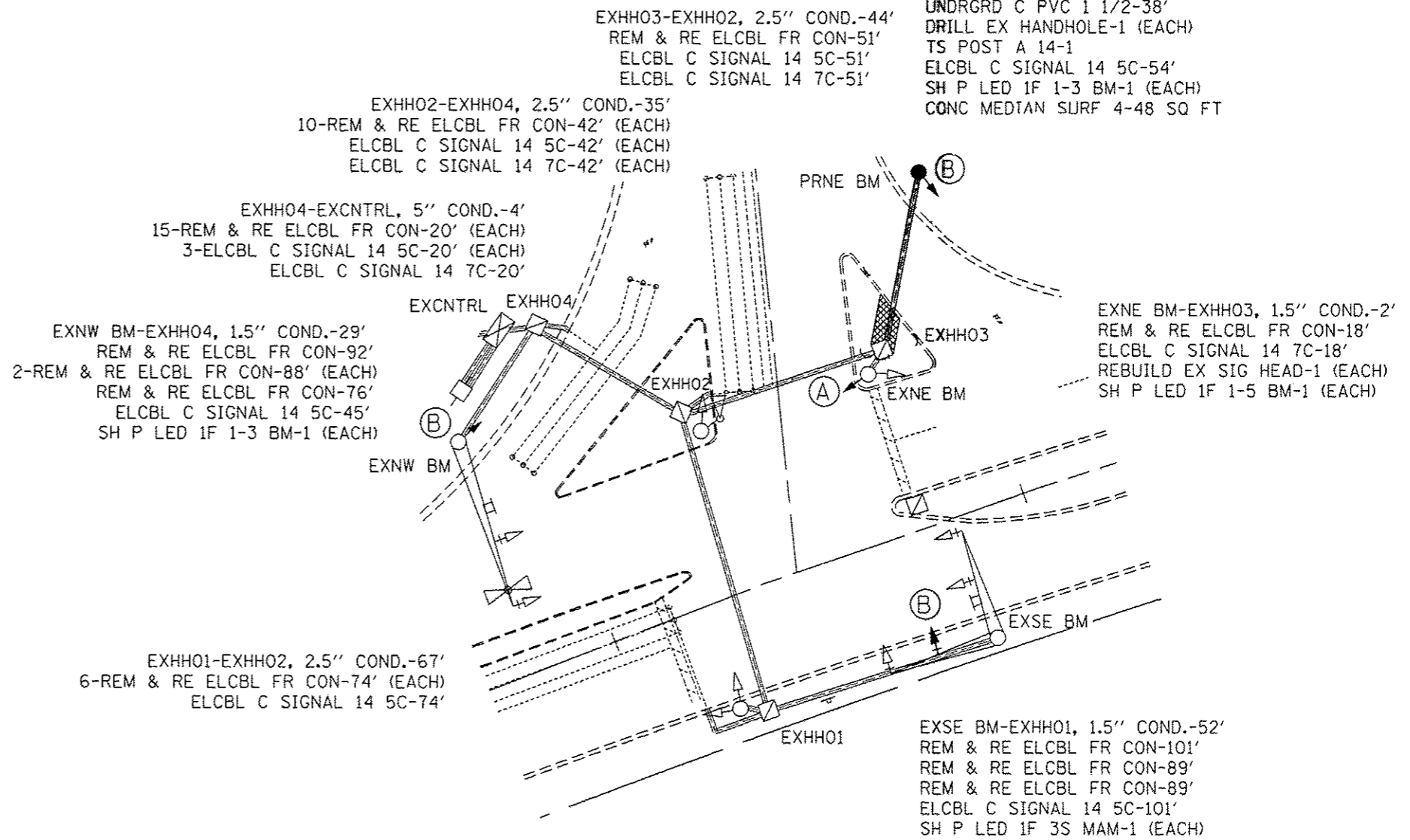
SEE CABLE DIAGRAM FOR "SCHEDULE OF QUANTITIES"



EXISTING FULL-ACTUATED CONTROLLER

EXISTING SEQUENCE OF OPERATION								
PHASE	1	2	3	4	5	6	7	8
MOVEMENT	↘	↙	NOT USED	↓	NOT USED	↗	NOT USED	NOT USED
CONCURRENT MOVEMENT PERMITTED	6	6		NONE		1 OR 2		

PROPOSED TRAFFIC SIGNAL FACES



PHASE DESIGNATION DIAGRAM

▲ SHEET ADDED 1-4-17



**=MADISON & ST. CLAIR

FILE NAME =	USER NAME = preston	DESIGNED -	REVISED -	STATE OF ILLINOIS DEPARTMENT OF TRANSPORTATION	IL 162 & MARYVILLE (GRANITE CITY, MADISON CNTY.) TRAFFIC SIGNAL PLAN	RTE.	SECTION	COUNTY	TOTAL SHEETS	SHEET NO.
pub\11084EB10NTEG\Illinois.gov\PIDOT\Documents\DOT Office\District 8\Projects\087-DRAWING\A0\sheet\0876J22-ph-t-plot	PLOT SCALE = 33.3333 1/ in.	CHECKED -	REVISED -			* DIST 8 TS 2017-1	**	136	71	
PLOT DATE = 12/27/2016	DATE -	REVISED -	REVISED -			**VARIOUS	CONTRACT NO. 76J22			
				SCALE:	SHEET NO. OF SHEETS	STA. TO STA.	FED. ROAD DIST. NO. ILLINOIS FED. AID PROJECT			