

STATE OF ILLINOIS
DEPARTMENT OF TRANSPORTATION

F.A.I. RTE.	SECTION	COUNTY	TOTAL SHEETS	SHEET NO.
255	DIST 8 PATCHING 2017-1	VARIOUS	6	1
		ILLINOIS	CONTRACT NO. 76J73	

FOR INDEX OF SHEETS, SEE SHEET NO. 2

ADT

JB BRIDGE TO ROUTE 3
2015 ADT=64100 (ACTUAL)
2016 ADT=64500 (ESTIMATED)
2036 ADT=74200 (ESTIMATED)
SU=2.3% MU=8.1%

ROUTE 3 TO NORTH DUPO
2015 ADT=50000 (ACTUAL)
2016 ADT=50400 (ESTIMATED)
2036 ADT=57900 (ESTIMATED)
SU=2.7% MU=10.1%

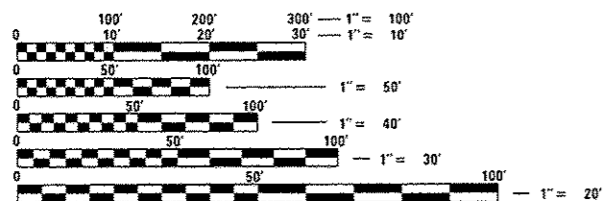
NORTH DUPO TO 157
2015 ADT=39500 (ACTUAL)
2016 ADT=39800 (ESTIMATED)
2036 ADT=45700 (ESTIMATED)
SU=3.2% MU=12.9%

157 TO IL 15
2015 ADT=49600 (ACTUAL)
2016 ADT=47200 (ESTIMATED)
2036 ADT=54300 (ESTIMATED)
SU=3.3% MU=15.7%

IL 15 TO I-64
2015 ADT=51800 (ACTUAL)
2016 ADT=52200 (ESTIMATED)
2036 ADT=6000 (ESTIMATED)
SU=3.3% MU=14.5%

I-64 TO SOUTH OF COLLINSVILLE ROAD
2015 ADT=48800 (ACTUAL)
2016 ADT=49100 (ESTIMATED)
2036 ADT=56500 (ESTIMATED)
SU=2.8% MU=13.7%

START LAT - 38.48389
LONG - -90.26639
END LAT - 38.65972
LONG - -90.03167



FULL SIZE PLANS HAVE BEEN PREPARED USING STANDARD ENGINEERING SCALES. REDUCED SIZED PLANS WILL NOT CONFORM TO STANDARD SCALES. IN MAKING MEASUREMENTS ON REDUCED PLANS, THE ABOVE SCALES MAY BE USED.

J.U.L.I.E.
JOINT UTILITY LOCATION INFORMATION FOR EXCAVATION
1-800-892-0123
OR 811

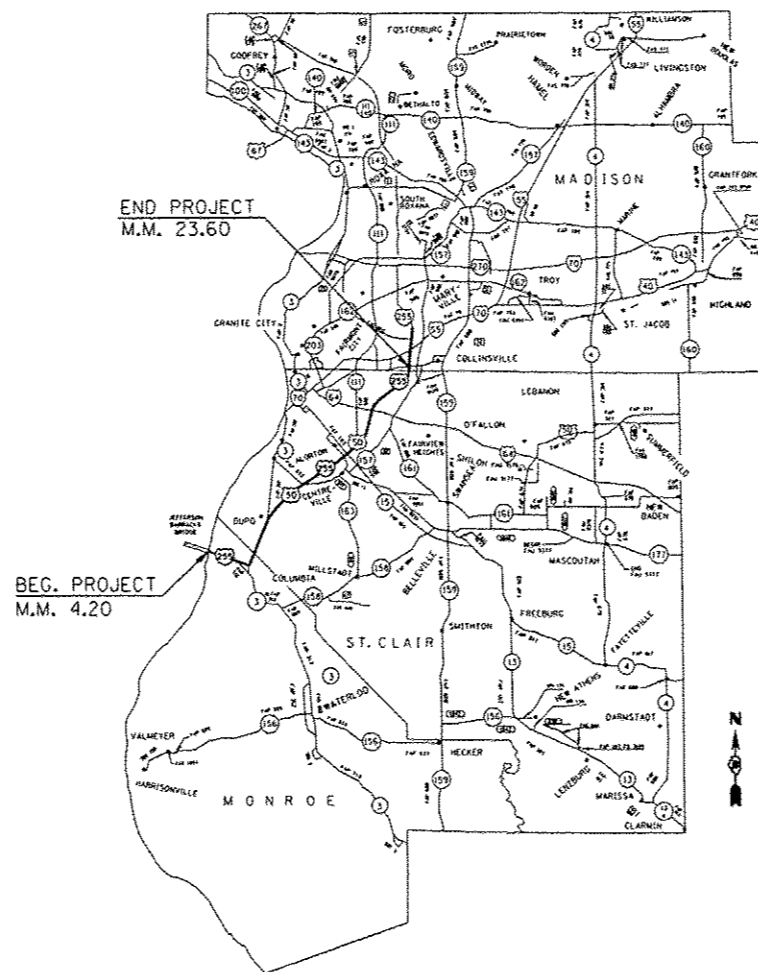
PROJECT ENGINEER: HERVE GELIN (618) 346-3179
DESIGNER: ALVIN NIEVES-ROSARIO (618)346-3187

CONTRACT NO. 76J73

PROPOSED HIGHWAY PLANS

FAI ROUTE 255 (I-255)
SECTION DIST 8 PATCHING 2017-1
PATCHING
MONROE & ST. CLAIR COUNTIES

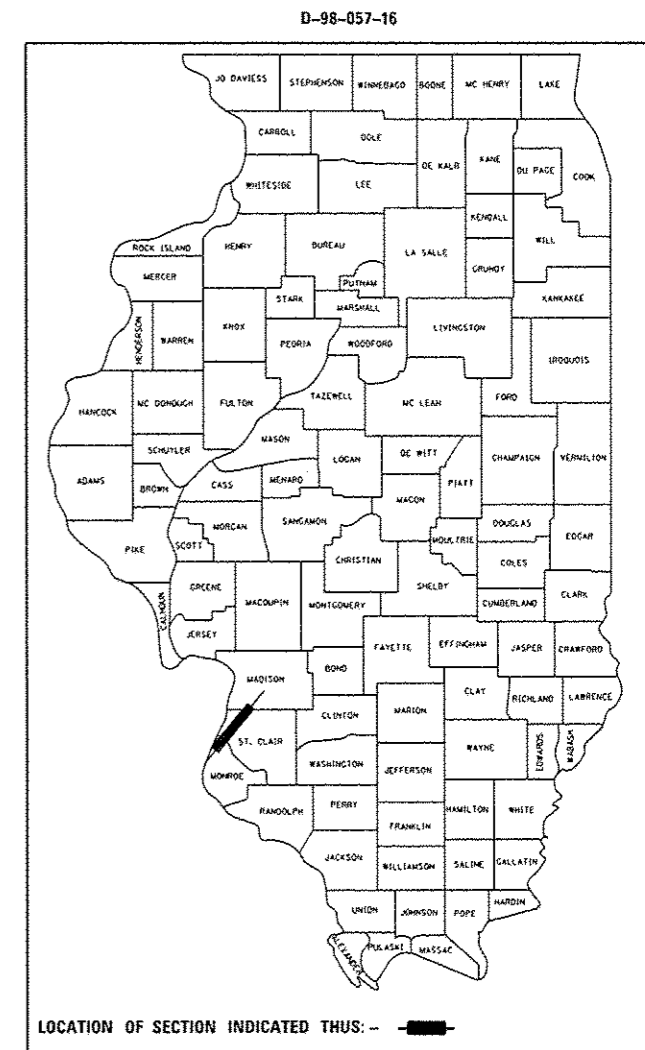
C-98-051-016



GROSS LENGTH = 102,432 FT. = 19.40 MILE

NET LENGTH = 102,432 FT. = 19.40 MILE

LOCATION MAP
NOT TO SCALE



STATE OF ILLINOIS
DEPARTMENT OF TRANSPORTATION

SUBMITTED Oct. 18, 2016

Jeffrey Z. Kam
REGIONAL ENGINEER

Dee A. He
Moumen M. Addis, P.E.
ENGINEER OF DESIGN AND ENVIRONMENT

Dee A. He
DIRECTOR OF PROGRAM DEVELOPMENT

PRINTED BY THE AUTHORITY
OF THE STATE OF ILLINOIS

INDEX OF SHEETS

- 1 COVER SHEET
- 2 GENERAL NOTES, INDEX OF SHEETS, STANDARDS
- 3-4 SUMMARY OF QUANTITIES
- 5 TYPICAL SECTIONS
- 6 CHANGEABLE MESSAGE SIGN DETAIL

STANDARDS

- 000001-06 STANDARD SYMBOLS, ABBREVIATIONS AND PATTERNS
- 001006 DECIMAL OF AN INCH AND OF A FOOT
- 442001-04 CLASS A PATCHES
- 701400-09 APPROACH TO LANE CLOSURE, FREEWAY/EXPRESSWAY
- 701401-10 LANE CLOSURE FREEWAY/EXPRESSWAY
- 701411-09 LANE CLOSURE, MULTILANE, AT ENTRANCE OR EXIT RAMP, FOR SPEEDS ≥ 45MPH
- 701446-08 TWO LANE CLOSURE FREEWAY/EXPRESSWAY
- 701901-06 TRAFFIC CONTROL DEVICES

GENERAL NOTES

1. PRIOR TO PATCHING, A PATCHING SURVEY SHALL BE PERFORMED TO DETERMINE RIORITY PATCHING LOCATIONS. THE PATCHING SURVEY SHALL BE COORDINATED WITH THE BUREAU OF OPERATIONS FIELD ENGINNER TIM PRICE AT (618) 346-3284.
2. UTILITY INTERFERENCES ARE NOT ANTICIPATED ON THIS CONTRACT. IT SHALL BE THE CONTRACTOR'S RESPONSIBILITY TO COORDINATE HIS CONSTRUCTION ACTIVITIES WITH THE VARIOUS UTILITY OWNERS. ALL POTENTIAL CONFLICTS SHALL BE INVESTIGATED AND REMEDIAL ACTION TAKEN PRIOR TO INTERRUPTION OF THE CONTRACTOR'S PROGRESS. NO ADDITIONAL COST SHALL BE ADDED TO THE CONTRACT RESULTING FROM UTILITY CONFLICTS.
3. THE RESIDENT ENGINEER SHALL VERIFY THE EXISTENCE OF HIGHWAY LIGHTNING OR INTELLIGENT TRANSPORTATION SYSTEMS (ITS) UTILITIES WITHIN PORJECT LIMITS. IF HIGHWAY LIGHTNING OR ITS EXISTS WITHING THE PROJECT LIMITS, AND IF THESE ITEMS REQUIRE LOCATING, THE CONTRACTOR SHALL BE DIRECTED TO DO SO ACCORDING TO SECTION 803 OF THE STANDARD SPECIFICATIONS. THIS WORK SHALL BE PAID FOR ACCORDING TO ARTICLE 109.04 OF THE STANDARD SPECIFICATIONS.
4. THE CONTRACTOR SHALL VERIFY ALL DIMENSIONS AND CONDITIONS IN THE FIELD PRIOR TO CONSTRUCTION AND ORDERING OF MATERIALS.
5. "ROAD CONSTRUCTION AHEAD" SIGNS SHALL BE PLACED AT EACH END OF THE PROJECT PLUS THE ENTRANCE RAMPS, AND WILL BE CONSIDERED INCLUDED IN THE TRAFFIC CONTROL PAY ITEMS.
6. FLAGMEN SHALL BE PRESENT DURING ALL CLOSURE HOURS, INCLUDING LUNCH HOUR, AND NO ADDITIONAL COMPENSATION SHALL BE ALLOWED.
7. A QUANTITY OF 5 CALENDAR MONTHS FOR 'CHANGEABLE MESSAGE SIGN' HAS BEEN INCLUDED IN THE PLANS. SEE SHEET NO. 6 FOR LOCATIONS.

GENERAL NOTES (CONT.)

8. A QUANTITY OF 1092 FOOT PAINT PAVEMENT MARKING, LINE 6" HAS BEEN ADDED TO THE PLANS TO ALLOW FOR ANY PAVEMENT MARKING DISTURBED DURING PATCHING. NO EXISTING PAVEMENT MARKING NOT DISTURBED SHALL BE PAINTED OVER DURING THE APPLICATION.
9. A QUANTITY OF 60 RAISED REFLECTIVE PAVEMENT MARKERS HAS BEEN ADDED TO THE PLANS TO ALLOW FOR ANY MARKERS DISTURBED DURING PATCHING.
10. THE ILLINOIS DEPARTMENT OF TRANSPORTATION STRONGLY ENCOURAGES THE PRIME CONTRACTOR AND THEIR APPROVED SUB-CONTRACTORS TO HIRE MINORITY, WOMEN AND DISADVANTAGED INDIVIDUALS FROM ITS FEDERALLY FUNDED HIGHWAY CONSTRUCTION CAREERS TRAINING PROGRAM (HCCTP) TO HELP MEET WORKFORCE AND TRAINEE GOALS. THIS PROGRAM IS TRAINING MINORITIES, WOMEN AND DISADVANTAGED INDIVIDUALS IN HIGHWAY CONSTRUCTION-RELATED SKILLS, E.G., MATH FOR THE TRADES, JOB READINESS, TECHNICAL SKILLS COURSEWORK (CARPENTRY, CONCRETE FLATWORK, BLUEPRINT READING, SITE PLANS, SITE WORK, TOOLS USE, ETC.) AND OSHA 10 HOUR CERTIFICATION, TO PREPARE THEM FOR A CAREER IN THE HIGHWAY CONSTRUCTION TRADES. GRADUATES ARE WELL-TRAINED AND READY TO BECOME PRODUCTIVE ENTRY-LEVEL CONSTRUCTION WORKERS. PLEASE CONTACT THE DISTRICT 8 EEO OFFICE AT 618-346-3360 AND/OR THE HCCTP COORDINATOR AT 618/874-6528 TO LEARN MORE ABOUT THE PROGRAM AND FOR ASSISTANCE IN MEETING WORKFORCE AND TRAINEE GOALS.

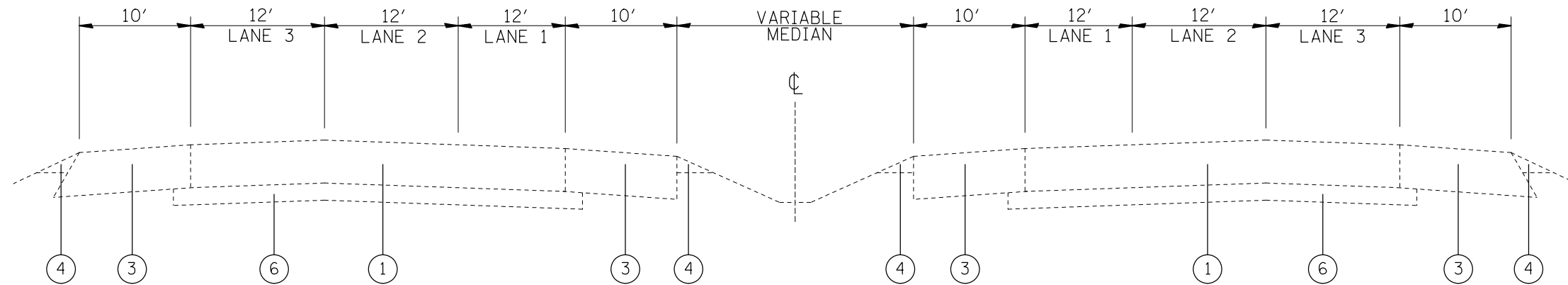
FILE NAME = USER NAME = DESIGNED - REVISIONS - CHECKED - DATE -				DRAWING DATA: PROJECT: SHEET: DATE:				STATE OF ILLINOIS DEPARTMENT OF TRANSPORTATION				INDEX OF SHEETS, STANDARDS, GENERAL NOTES & COMMITMENTS				F.A.I. RTE. 255		SECTION DIST. 8 PATCHING 2017-1		COUNTY *		TOTAL SHEETS 6		SHEET NO. 2		CONTRACT NO. 76J73	
PLOT SCALE = 5000.0000' / 1"				PLOT DATE = 11/2/2015				SCALE:				SHEET OF SHEETS		STA. TO STA.		ILLINOIS FED. AID PROJECT		*MONROE, ST. CLAIR									

CODE NO.	ITEM	UNIT	100 % STATE TOTAL QUANTITY	CONSTRUCTION CODE			
				EB ST. CLAIR ROADWAY	EB MONROE ROADWAY	WB ST. CLAIR ROADWAY	WB MONROE ROADWAY
				0005 URBAN	0005 URBAN	0005 URBAN	0005 URBAN
44200549	CLASS A PATCHES, TYPE I, 10 INCH	SQ YD	327	106	58	105	58
44200553	CLASS A PATCHES, TYPE II, 10 INCH	SQ YD	1120	364	196	364	196
44200557	CLASS A PATCHES, TYPE III, 10 INCH	SQ YD	290	94	51	94	51
44200559	CLASS A PATCHES, TYPE IV, 10 INCH	SQ YD	415	135	73	134	73
44213000	PATCHING REINFORCEMENT	SQ YD	2152	699	378	697	378
44213200	SAW CUTS	FOOT	9500	3087	1663	3087	1663
44213204	TIE BARS 3/4"	EACH	300	97	53	97	53
67000400	ENGINEER'S FIELD OFFICE, TYPE A	CAL MO	2	0.5	0.5	0.5	0.5
67100100	MOBILIZATION	LSUM	1	0.25	0.25	0.25	0.25
70100420	TRAFFIC CONTROL AND PROTECTION, STANDARD 701411	EACH	42	19	2	19	2
70100800	TRAFFIC CONTROL AND PROTECTION, STANDARD 701401	LSUM	1	0.25	0.25	0.25	0.25
70100815	TRAFFIC CONTROL AND PROTECTION, STANDARD 701446	LSUM	1	0.25	0.25	0.25	0.25
70106800	CHANGEABLE MESSAGE SIGN	CAL MO	5	2	1	1	1
70200100	NIGHTTIME WORK ZONE LIGHTING	LSUM	1	0.25	0.25	0.25	0.25

M

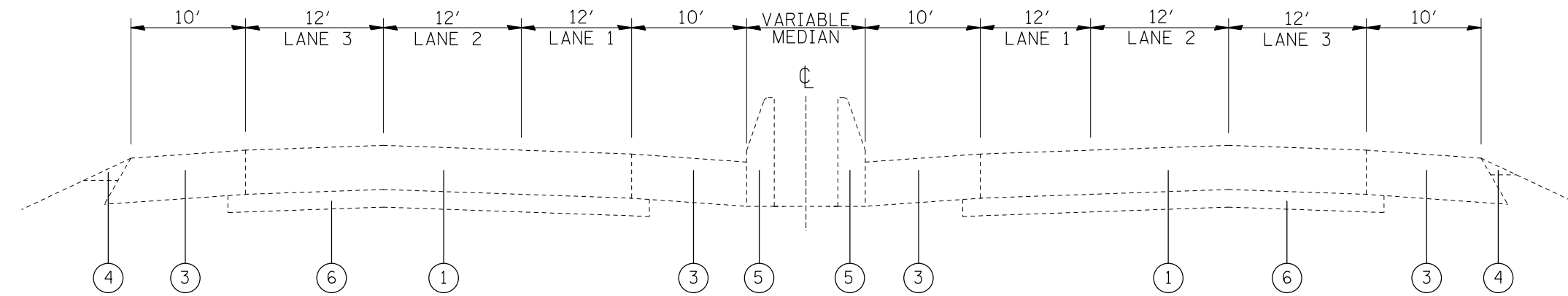
CODE NO.	ITEM	UNIT	100 % TOTAL STATE QUANTITY	CONSTRUCTION CODE			
				EB ST. CLAIR ROADWAY	EB MONROE ROADWAY	WB ST. CLAIR ROADWAY	WB MONROE ROADWAY
				0005 URBAN	0005 URBAN	0005 URBAN	0005 URBAN
70300100	SHORT TERM PAVEMENT MARKING	FOOT	380	123	67	123	67
70300150	SHORT TERM PAVEMENT MARKING REMOVAL	SQ FT	130	42	23	42	23
70300240	TEMPORARY PAVEMENT MARKING - LINE 6"	FOOT	1892	614	332	614	332
* 78001130	PAINT PAVEMENT MARKING - LINE 6"	FOOT	1892	614	332	614	332
* 78100100	RAISED REFLECTIVE PAVEMENT MARKER	EACH	60	19	11	19	11
6 X0327980	PAVEMENT MARKING REMOVAL - WATER BLASTING	SQ FT	946	390	83	390	83

* SPECIALTY ITEM



FAI 255

M.M. 4.20 to M.M. 10.50
M.M. 19.20 to M.M. 23.60



FAI 255

M.M. 10.50 to M.M. 19.20

LEGEND

- ① EXISTING C.R.P.C.C. PAVEMENT 9"
- ② EXISTING P.C.C. PAVEMENT 10"
- ③ EXISTING BITUMINOUS SHOULDERS 9"
- ④ EXISTING AGGREGATE SHOULDERS, TYPE B
- ⑤ EXISTING CONCRETE BARRIER
- ⑥ EXISTING STABILIZED SUB-BASE, 4"

FILE NAME =	USER NAME = nievesa	DESIGNED -	REVISED -
pw:\11084EBIDINTEG.illinois.gov\PWIDOT\Documents\IDOT Offices\District 8\Projects\D876\DRAWING\DATA\EA0sheets\D876J73-sht-typos		CHECKED -	REVISED -
		DATE -	REVISED -

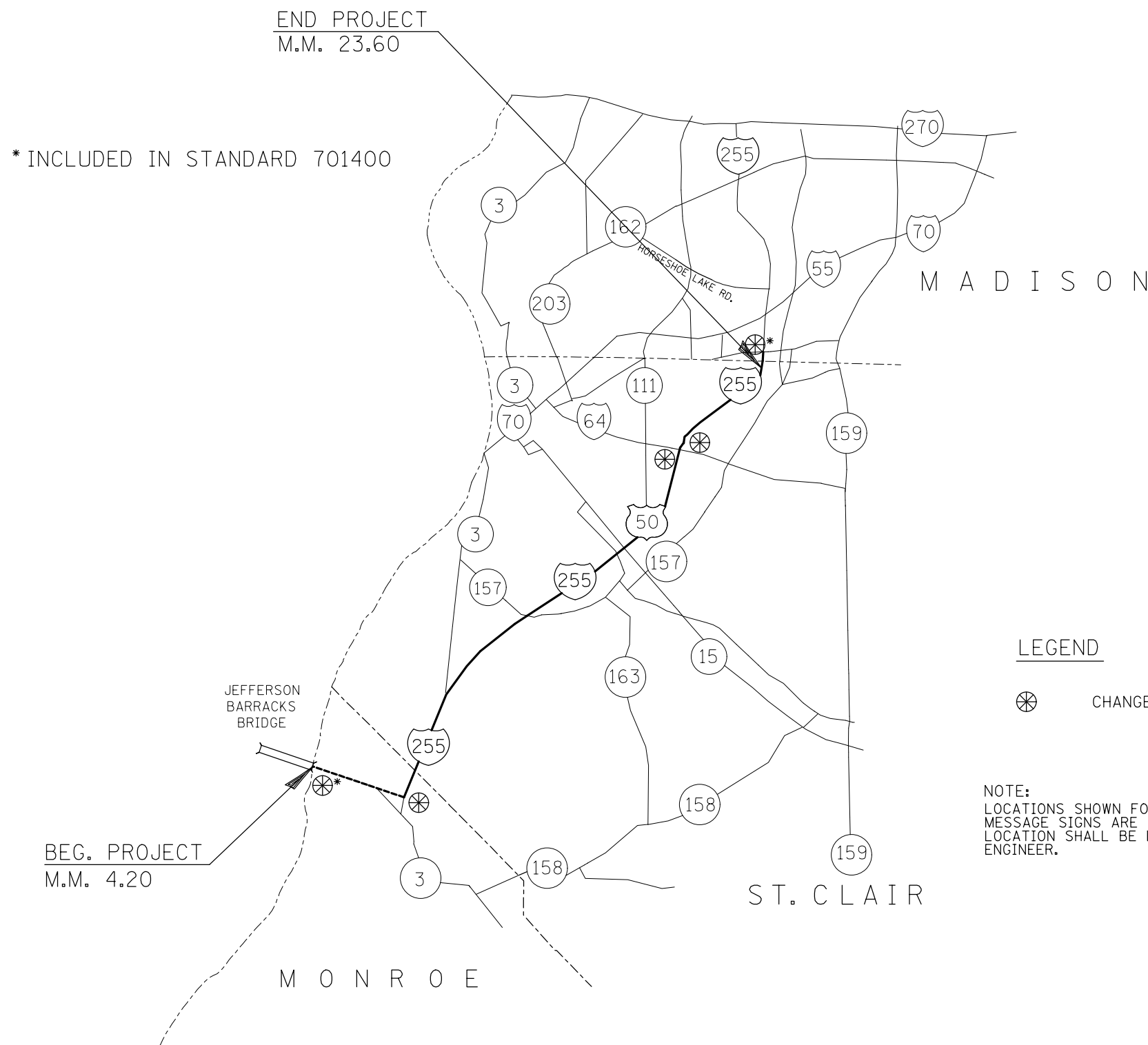
**STATE OF ILLINOIS
DEPARTMENT OF TRANSPORTATION**

TYPICAL SECTIONS

SCALE: NTS SHEET 1 OF 1 SHEETS STA. TO STA.

F.A.I. RTE.	SECTION	COUNTY	TOTAL SHEETS	SHEET NO.
255	DIST. 8 PATCHING 2017-1	*	6	5
			CONTRACT NO. 76J73	
ILLINOIS FED. AID PROJECT				

•MONROE, ST. CLAIR



LEGEND

⊗ CHANGEABLE MESSAGE SIGNS

NOTE:
LOCATIONS SHOWN FOR THE CHANGEABLE MESSAGE SIGNS ARE APPROXIMATE. THE EXACT LOCATION SHALL BE DETERMINED BY THE RESIDENT ENGINEER.

FILE NAME =	USER NAME = nievesa	DESIGNED -	REVISED -
pw:\IL\084EBIDINTEG\illinois.gov\PWIDOT\Documents\DOT Offices\District 8\Projects\0876-DRAWING\DATA\EA0sheets\0876J73-sht-detail		CHECKED -	REVISED -
		DATE -	REVISED -

**STATE OF ILLINOIS
DEPARTMENT OF TRANSPORTATION**

CHANGABLE MESSAGE SIGN DETAIL			
SCALE: NTS	SHEET	OF SHEETS	STA. TO STA.

F.A.I. RTE.	SECTION	COUNTY	TOTAL SHEETS	SHEET NO.
255	DIST. 8 PATCHING 2017-1	*	6	6
CONTRACT NO. 76J73				
ILLINOIS FED. AID PROJECT				

•MONROE, ST. CLAIR