

STATE OF ILLINOIS  
DEPARTMENT OF TRANSPORTATION

F.A.P. RTE.	SECTION	COUNTY	TOTAL SHEETS	SHEET NO.
311	2016-012B	DUPAGE	10	1
ILLINOIS			CONTRACT NO. 62C27	

D-91-326-16



# PROPOSED HIGHWAY PLANS

FAP 311 - US 34 (OGDEN AVE)  
OVER CRESS CREEK WEST OF BENEDETTI ROAD  
SECTION: 2016-012B  
CULVERT REPAIR  
DUPAGE COUNTY  
C-91-326-16

FOR INDEX OF SHEETS, SEE SHEET NO. 2

IMPROVEMENT IS LOCATED IN  
THE VILLAGE OF NAPERVILLE

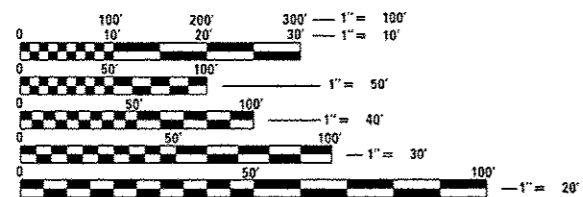
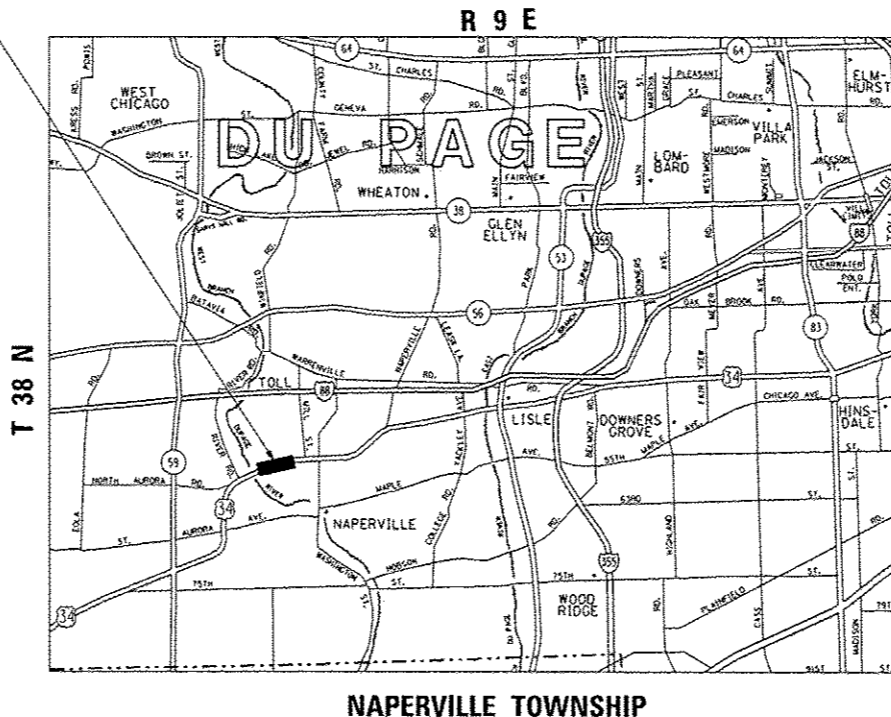
TRAFFIC DATA

2015 ADT US 34 (OGDEN AVENUE): 29,100

POSTED SPEED LIMIT

US 34 (OGDEN AVENUE): 40 MPH

SN 022-0520  
LOCATION OF IMPROVEMENT



FULL SIZE PLANS HAVE BEEN PREPARED USING STANDARD ENGINEERING SCALES. REDUCED SIZED PLANS WILL NOT CONFORM TO STANDARD SCALES. IN MAKING MEASUREMENTS ON REDUCED PLANS, THE ABOVE SCALES MAY BE USED.

J.U.L.I.E.  
JOINT UTILITY LOCATION INFORMATION FOR EXCAVATION  
1-800-892-0123  
OR 811

PROJECT ENGINEER: JEAN ALAIN MIDY (847)221-3056  
PROJECT MANAGER: ISSAM RAYYAN (847)705-4178

CONTRACT NO. 62C27

STATE OF ILLINOIS  
DEPARTMENT OF TRANSPORTATION

SUBMITTED *October 26, 2016*

*J. A. Fortman*  
REGIONAL ENGINEER

*Dec 9 2016*  
*M. A. Addis*  
ENGINEER OF DESIGN AND ENVIRONMENT

*Dec 9 2016*  
*[Signature]*  
DIRECTOR OF PROGRAM DEVELOPMENT

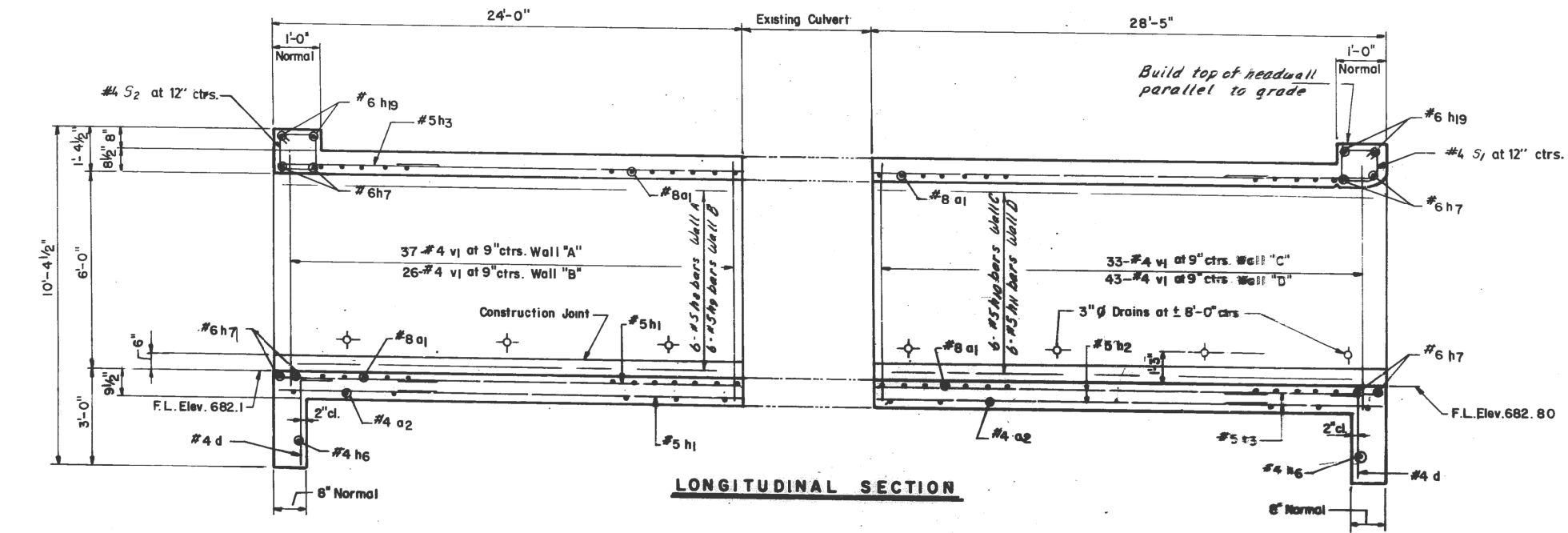
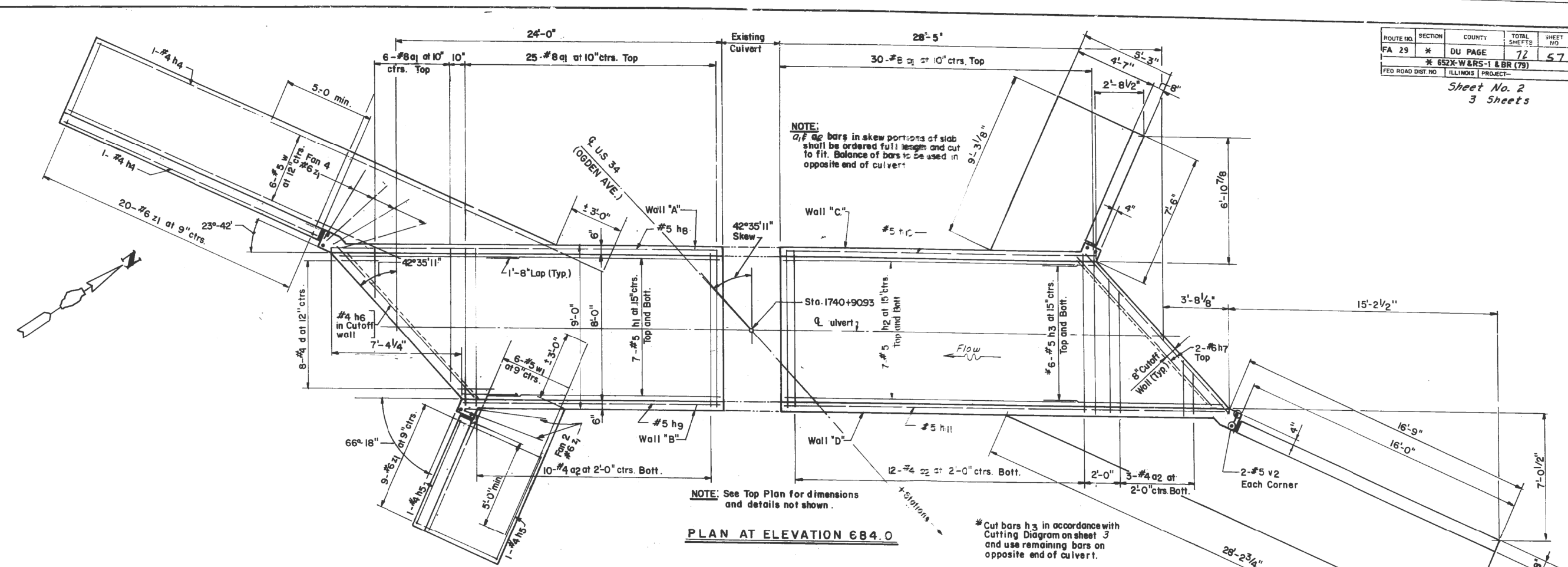
PRINTED BY THE AUTHORITY  
OF THE STATE OF ILLINOIS





ROUTE NO.	SECTION	COUNTY	TOTAL SHEETS	SHEET NO.
FA 29	*	DU PAGE	72	57
* 652X-W&RS-1 & BR (79)				
ILLINOIS PROJECT				

Sheet No. 2  
3 Sheets



FOR INFORMATION ONLY

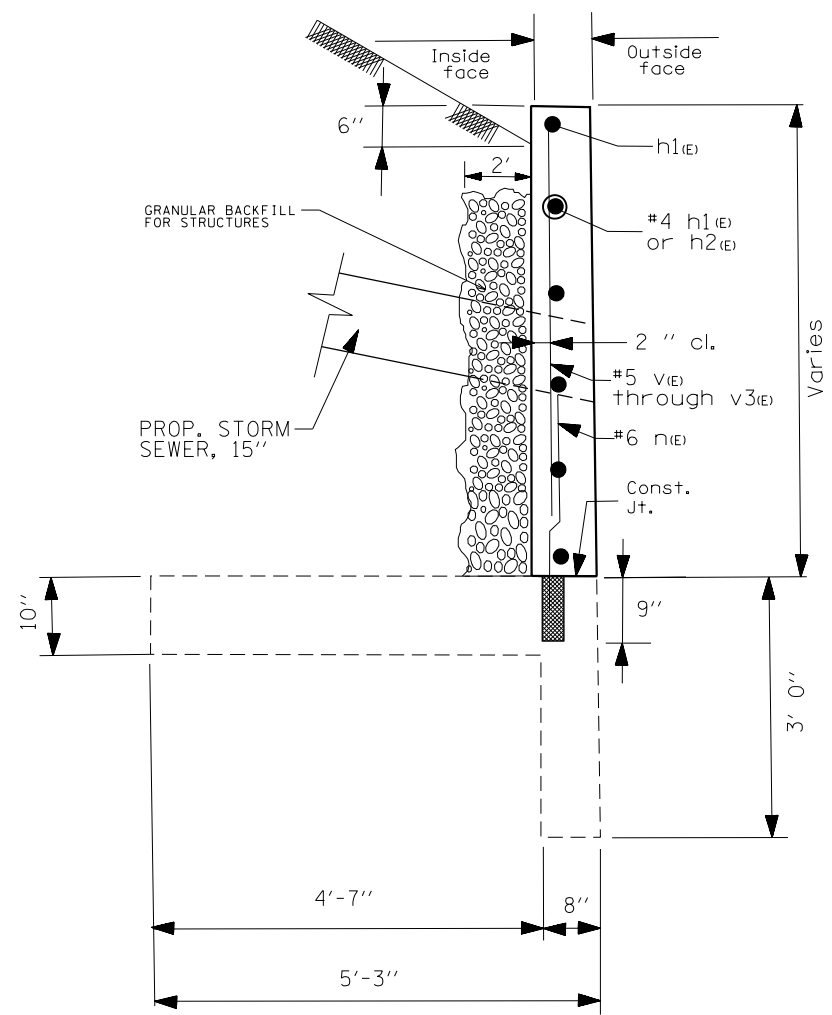
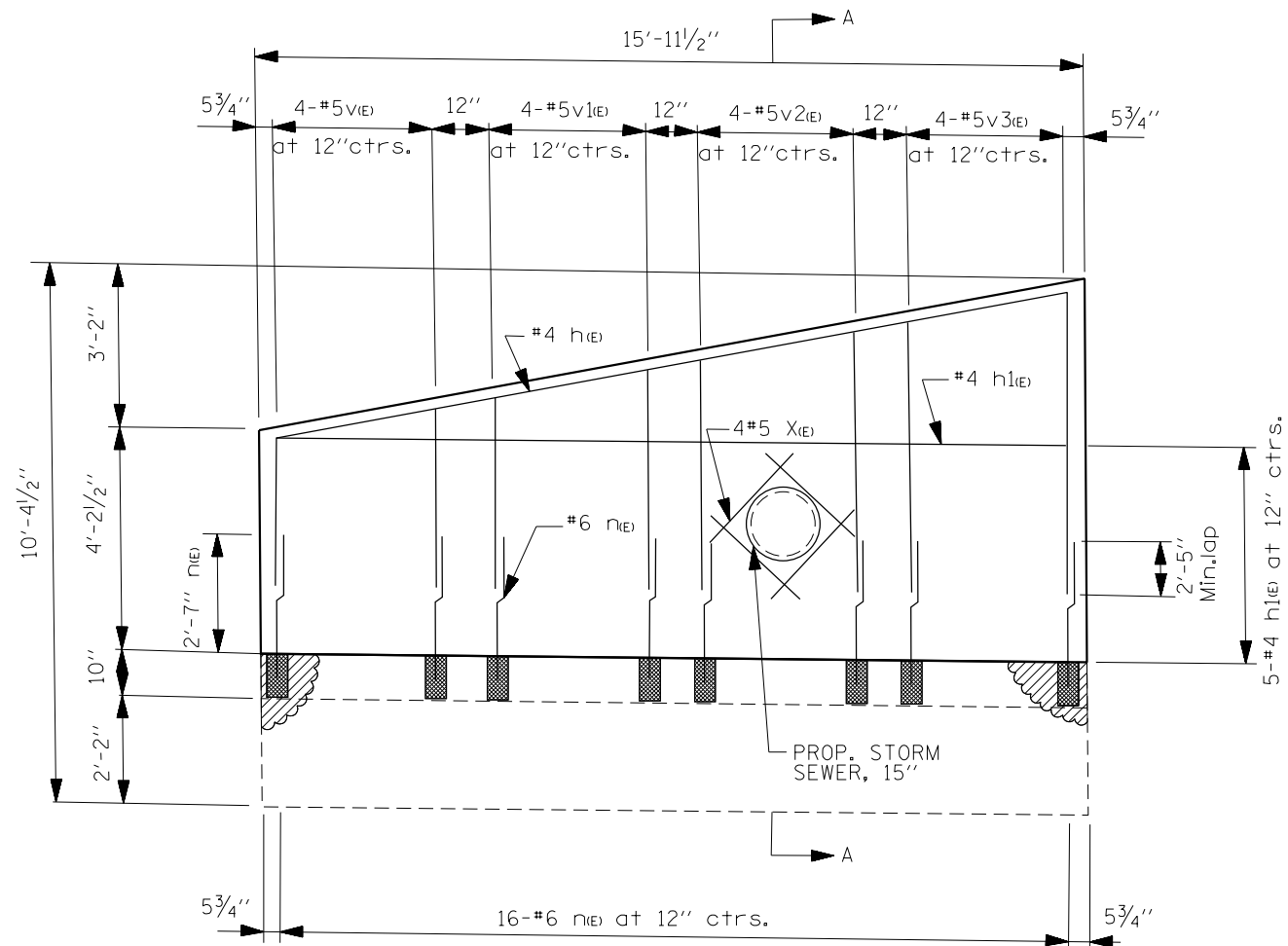
ILLINOIS DEPARTMENT OF TRANSPORTATION  
**BOX CULVERT  
EXTENSION**  
STA. 1740 + 90.93

DS 5/14/84

FILE NAME =	USER NAME = hassan	DESIGNED -	REVISED -	<b>STATE OF ILLINOIS DEPARTMENT OF TRANSPORTATION</b>	<b>WINGWALL PLAN</b>				F.A.P. RTE.	SECTION	COUNTY	TOTAL SHEETS	SHEET NO.
pw\11084EBIDINTEG.illinois.gov\PIWIDOT\Documents\DOT Offices\District 1\Projects\1326\Drawings\Design\132616-sh1-plan.dgn		CHECKED -	REVISED -		311	2016-012B	DU PAGE	10	4				
Default		DATE -	REVISED -		SCALE:	SHEET	OF	SHEETS	STA.	TO	STA.	CONTRACT NO.	62C27
												ILLINOIS FED. AID PROJECT	







SECTION A-A

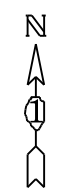
(TOTAL) BILL OF MATERIAL				
BAR	NO.	SIZE	LENGTH	SHAPE
h1(E)	5	# 5	15'-8"	————
v1(E)	4	# 5	4'-1"	————
v2(E)	4	# 5	4'-11"	————
v3(E)	4	# 5	5'-8"	————
n1(E)	16	# 6	3'-4"	————
h2(E)	1	# 4	15'-8"	————
h1(E)	1	# 4	6'-5"	————
X1(E)	4	# 5	3'-9"	————
REINFORCEMENT BARS, EPOXY COATED			LBS	280
GRANULAR BACKFILL FOR STRUCTURES			CU YD	8
STORM SEWERS, CLASS A TYPE 2 15"			FOOT	15
CONCRETE STRUCTURES			CU YD	2.3
STRUCTURAL REPAIR OF CONCRETE (DEPTH GREATER THAN 5 INCHES)			SQ FT	6

**LEGEND:**

- DRILL AND EPOXY GROUT 9" MINIMUM INTO EXISTING CONCRETE BASE ACCORDING TO ARTICLE 584 OF THE STANDARD SPECIFICATION
- STRUCTURAL REPAIR OF CONCRETE (DEPTH > 5')

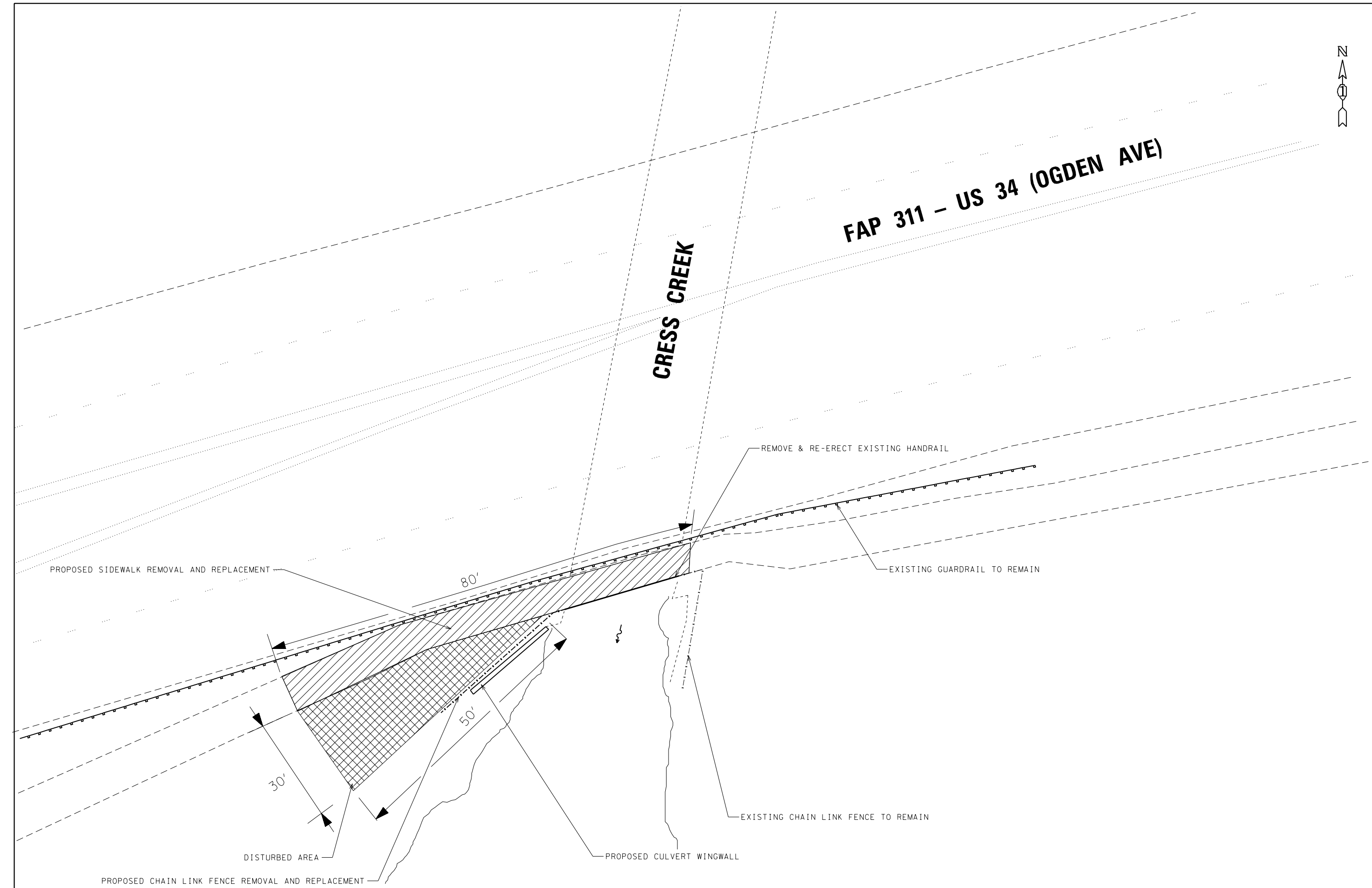
**NOTES:**

EXISTING REINFORCEMENT BARS EXTENDING IN TO REMOVAL AREA SHALL BE CLEAN, STRAIGHTEN AND INCORPORATED IN TO THE NEW CONSTRUCTION. ANY REINFORCEMENT BARS THAT ARE DAMAGED DURING CONCRETE REMOVAL SHALL BE REPLACED WITH AN APPROVED BAR SPLICER OR ANCHORAGE SYSTEM COST INCLUDED WITH CONCRETE REMOVAL.



**FAP 311 – US 34 (OGDEN AVE)**

**CRESS CREEK**



FILE NAME =	USER NAME = hassan	DESIGNED -	REVISED -
p:\11\084EBIDINTEG.illinois.gov\PI\DOT\Documents\DOT Offices\District 1\Projects\DI326\Drawings\Design\DI32616-sh-t-plan.dgn		REVISED -	REVISED -
Default	PLOT SCALE = 100.0000' / 1in.	CHECKED -	REVISED -
	PLOT DATE = 11/4/2016	DATE -	REVISED -

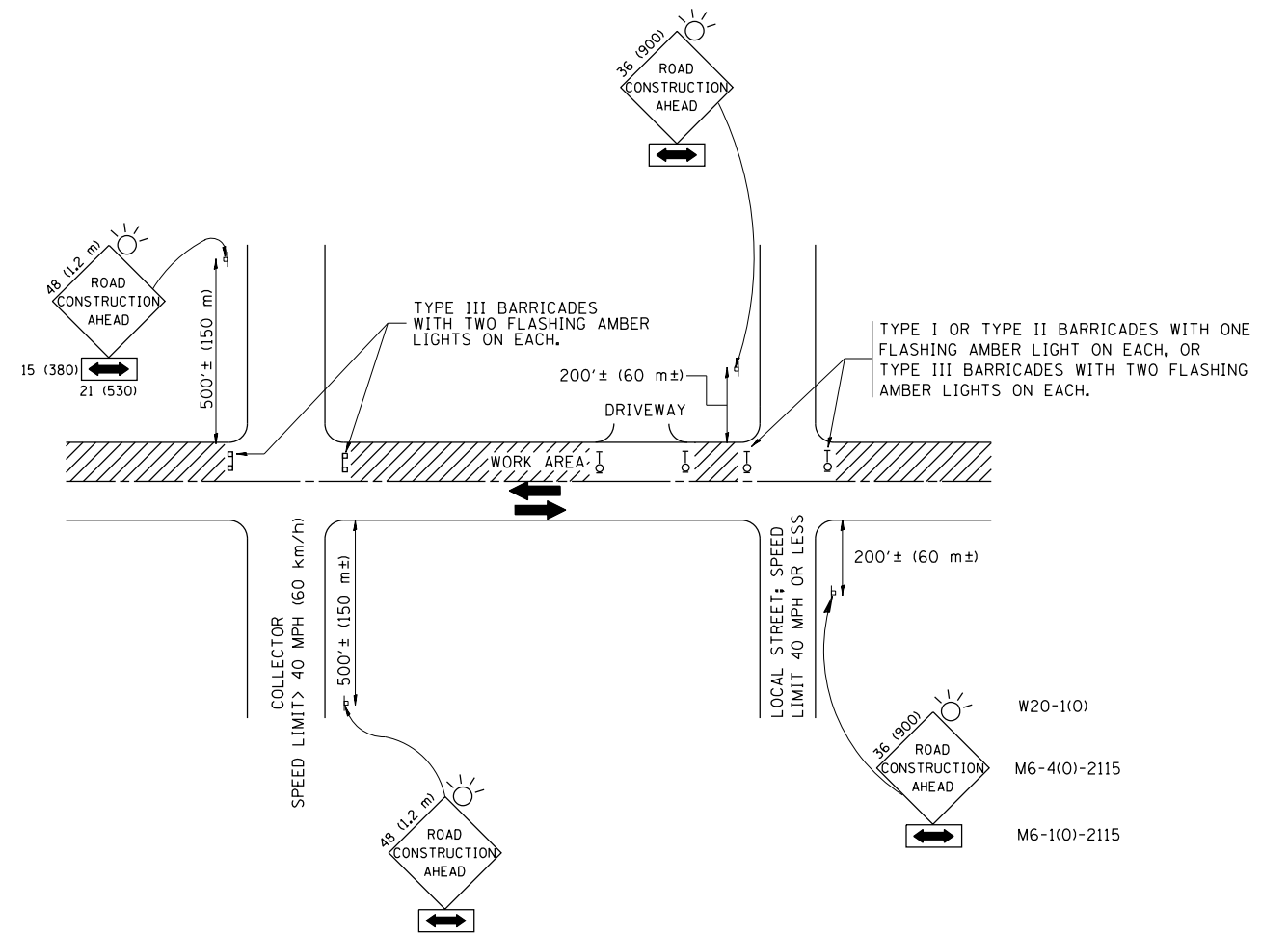
**STATE OF ILLINOIS  
DEPARTMENT OF TRANSPORTATION**

**PLAN & PROFILE**

SCALE: SHEET OF SHEETS STA. TO STA.

F.A.P. RTE.	SECTION	COUNTY	TOTAL SHEETS	SHEET NO.
311	2016-012B	DUPAGE	10	8
CONTRACT NO.			62C27	
ILLINOIS FED. AID PROJECT				





TRAFFIC CONTROL AND PROTECTION FOR SIDE ROADS, INTERSECTIONS, AND DRIVEWAYS

NOTES:

- A. FOR NO LANE RESTRICTION ON THE SIDE ROAD OR DRIVEWAYS
  1. SIDE ROAD WITH A SPEED LIMIT OF 40 MPH (60 km/h) OR LESS AS SHOWN ON THE DRAWING AND AS DIRECTED BY THE ENGINEER:
    - a) ONE ROAD CONSTRUCTION AHEAD SIGN 36 x 36 (900x900) WITH A FLASHER AND FLAG MOUNTED ON IT APPROXIMATELY 200' (60 m) IN ADVANCE OF THE MAIN ROUTE.
    - b) THE CLOSED PORTION OF THE MAIN ROUTE SHALL BE PROTECTED BY BLOCKING WITH TYPE I, TYPE II OR TYPE III BARRICADES, 1/3 OF THE CROSS SECTION OF THE CLOSED PORTION.
  2. SIDE ROAD WITH A SPEED LIMIT GREATER THAN 40 MPH (60 km/h) AS SHOWN ON THE DRAWING AND AS DIRECTED BY THE ENGINEER:
    - a) ONE ROAD CONSTRUCTION AHEAD SIGN 48 x 48 (1.2 m x 1.2 m) WITH A FLASHER MOUNTED ON IT APPROXIMATELY 500' (150 m) IN ADVANCE OF THE MAIN ROUTE.
    - b) THE CLOSED PORTION OF THE MAIN ROUTE SHALL BE PROTECTED BY BLOCKING WITH TYPE III BARRICADES, 1/2 OF THE CROSS SECTION OF THE CLOSED PORTION.
  3. WHEN THE SIDE ROAD LIES BETWEEN THE BEGINNING OF THE MAINLINE SIGNING AND THE WORK ZONE, A SINGLE HEADED ARROW (M6-1) SHALL BE USED IN LIEU OF THE DOUBLE HEADED ARROW (M6-4).
- B. FOR A LANE CLOSURE ON A SIDE ROAD OR DRIVEWAY:
 

USE APPLICABLE PORTIONS OF THE TYPICAL APPLICATION OF TRAFFIC CONTROL DEVICES (STD. 701501, STD. 701606 OR THE APPROPRIATE STANDARD). THE SPACING OF SIGNS AND BARRICADES SHALL BE ADJUSTED FOR FIELD CONDITIONS AS DIRECTED BY THE ENGINEER. THE DIRECTIONAL ARROW SHALL BE COVERED OR REMOVED WHEN NO LONGER CONSISTENT WITH THE SIDE ROAD LANE CLOSURE.
- C. ADVANCE WARNING SIGNS ARE TO BE OMITTED ON DRIVEWAY UNLESS OTHERWISE NOTED.
- D. THE TRAFFIC CONTROL AND PROTECTION FOR SIDE ROADS, INTERSECTIONS, AND DRIVEWAYS SHALL BE INCIDENTAL TO THE COST OF SPECIFIED TRAFFIC CONTROL STANDARDS OR ITEMS.

All dimensions are in millimeters (inches) unless otherwise shown.

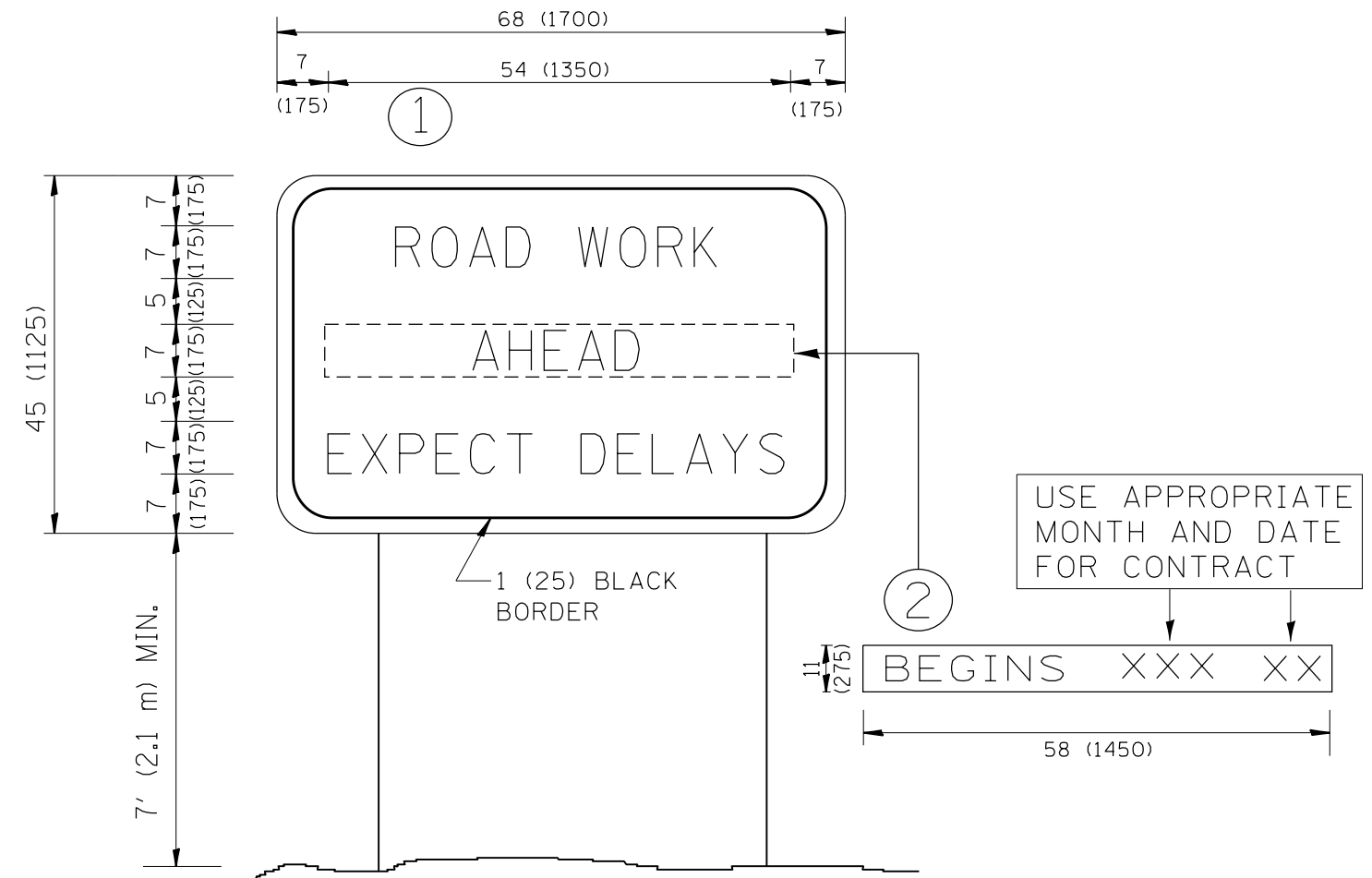
FILE NAME =	USER NAME = hassann	DESIGNED - LHA	REVISED - J. OBERLE 10-18-95
p:\1\084EBID\INTEG\illinois.gov\PIWIDOT\Documents\IDOT Offices\District 1\Projects\DI326\BROW\Info\Design\DI32616-sh-t-plan.dgn			REVISED - A. HOUSEH 03-06-96
	PLOT SCALE = 100.0000' / in.	CHECKED -	REVISED - A. HOUSEH 10-15-96
	PLOT DATE = 11/4/2016	DATE - 06-89	REVISED - T. RAMMACHER 01-06-00

STATE OF ILLINOIS  
DEPARTMENT OF TRANSPORTATION

TRAFFIC CONTROL AND PROTECTION FOR  
SIDE ROADS, INTERSECTIONS, AND DRIVEWAYS

SCALE: NONE SHEET NO. 1 OF 1 SHEETS STA. TO STA.

F.A.P. RTE.	SECTION	COUNTY	TOTAL SHEETS	SHEET NO.
311	2016-012B	DUPAGE	10	9
TC-10			CONTRACT NO.	62C27
FED. ROAD DIST. NO. 1 ILLINOIS FED. AID PROJECT				



**NOTES:**

1. USE BLACK LETTERING ON ORANGE BACKGROUND.
2. ERECT SIGNS IN ADVANCE OF THE LOCATION FOR THE "ROAD CONSTRUCTION AHEAD" SIGN AT LOCATIONS AS DIRECTED BY THE ENGINEER.
3. ERECT SIGN ① WITH INSTALLED PANEL ② ONE WEEK PRIOR TO THE START OF CONSTRUCTION.
4. REMOVE PANEL ② SOON AFTER THE START OF CONSTRUCTION.
5. SEE SPECIAL PROVISION FOR "TEMPORARY INFORMATION SIGNING" FOR ADDITIONAL INFORMATION.
6. ONE SIGN ASSEMBLY EQUALS 25.70 SQ. FT. (2.3 SQ. M.)
7. SHALL BE PAID FOR AS TEMPORARY INFORMATION SIGNING.

ALL DIMENSIONS ARE IN INCHES (MILLIMETERS) UNLESS OTHERWISE SHOWN.

FILE NAME =	USER NAME = hassann	DESIGNED -	REVISED - R. MIRS 09-15-97	<b>STATE OF ILLINOIS DEPARTMENT OF TRANSPORTATION</b>	<b>ARTERIAL ROAD INFORMATION SIGN</b>	F.A.P. RTE.	SECTION	COUNTY	TOTAL SHEETS	SHEET NO.
p:\11\084EBIDINTEG.illinois.gov\PIWIDOT\Documents\DOT Offices\District 1\Projects\DI326\Browns\Design\DI32616-sh-t-pln.dgn		REVISED - R. MIRS 12-11-97	REVISED - T. RAMMACHER 02-02-99			311	2016-012B	DUPAGE	10	10
PLOT SCALE = 100.0000' / 1in.	CHECKED -	REVISED - C. JUCIUS 01-31-07				<b>TC-22</b>		<b>CONTRACT NO. 62C27</b>		
PLOT DATE = 11/4/2016	DATE -					SCALE: NONE		SHEET NO. 1 OF 1 SHEETS		STA. TO STA.