

STATE OF ILLINOIS
DEPARTMENT OF TRANSPORTATION
DIVISION OF HIGHWAYS

**PROPOSED
BRIDGE PAINTING**

FAS 574 (ATHENS BLACKTOP ROAD)
SECTION D6 BDGE PAINTING 2017-1

BRIDGE PAINTING
MENARD COUNTY

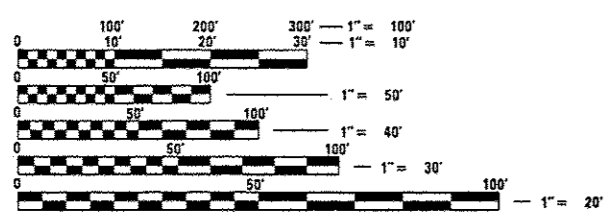
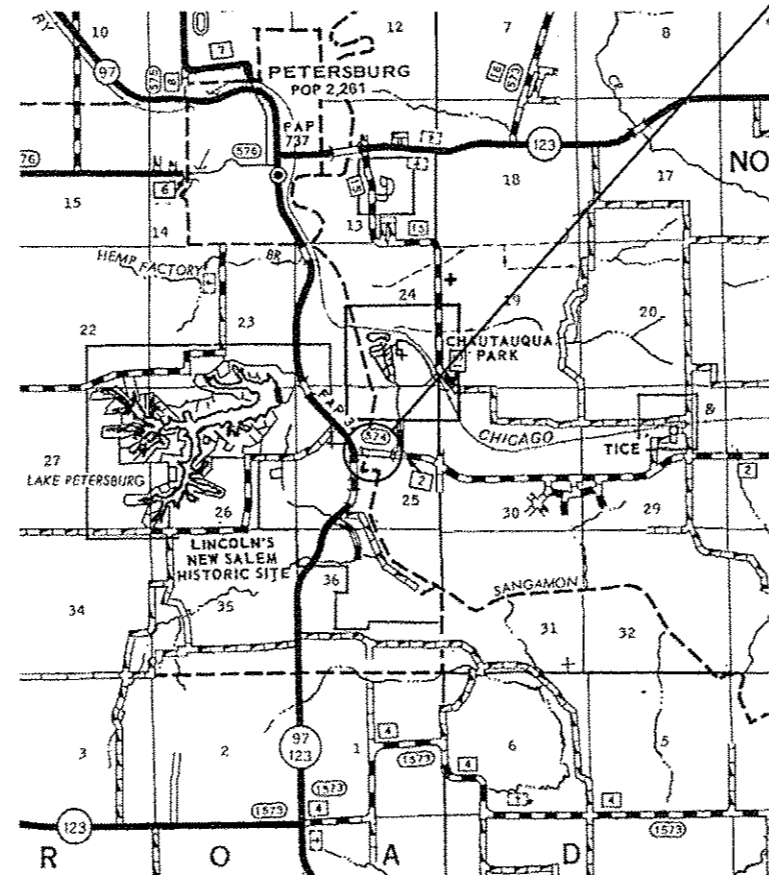
C-96-008-17

FOR INDEX OF SHEETS, SEE SHEET NO. 2

| F.A.S. RTE. | SECTION | COUNTY | TOTAL SHEETS | SHEET NO. |
|-------------|-------------------------|----------|--------------------|-----------|
| 574 | D6 BDGE PAINTING 2017-1 | MENARD | 11 | 1 |
| | | ILLINOIS | CONTRACT NO. 72J49 | |



PROJECT LOCATION - SN 065-0019
ATHENS ROAD OVER SANGAMON RIVER
AT THE JCT. OF ATHENS ROAD & IL 97



FULL SIZE PLANS HAVE BEEN PREPARED USING STANDARD ENGINEERING SCALES. REDUCED SIZED PLANS WILL NOT CONFORM TO STANDARD SCALES. IN MAKING MEASUREMENTS ON REDUCED PLANS, THE ABOVE SCALES MAY BE USED.

J.U.L.I.E.
JOINT UTILITY LOCATION INFORMATION FOR EXCAVATION
1-800-892-0123
OR 811

BRIDGE MAINTENANCE ENGINEER - BRANDON DUDLEY (217) 785-9290
BRIDGE INSPECTION ENGINEER - DAVE COPENBARGER (217) 785-5306

GROSS LENGTH = NA
NET LENGTH = NA

CONTRACT NO. 72J49

STATE OF ILLINOIS
DEPARTMENT OF TRANSPORTATION
DIVISION OF HIGHWAYS

SUBMITTED *25 October 2016*

[Signature] REGION FOUR ENGINEER

Dec 9 2016
Maurice M. Addis, PE
ENGINEER OF DESIGN AND ENVIRONMENT

Dec 9 2016
Omer Osman, PE
DIRECTOR OF HIGHWAYS, CHIEF ENGINEER

PRINTED BY THE AUTHORITY
OF THE STATE OF ILLINOIS

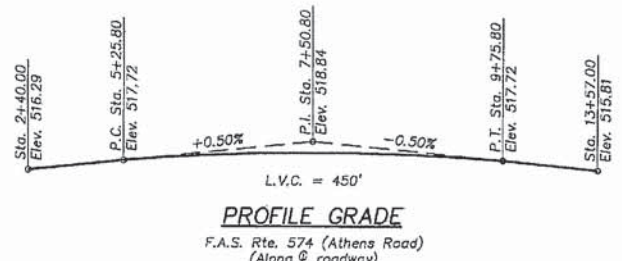
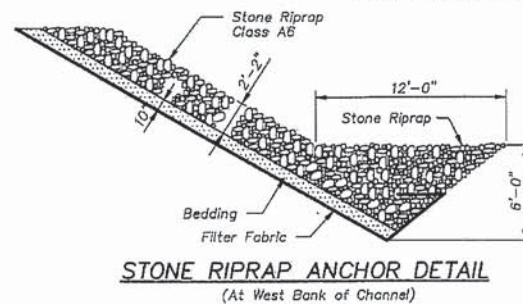
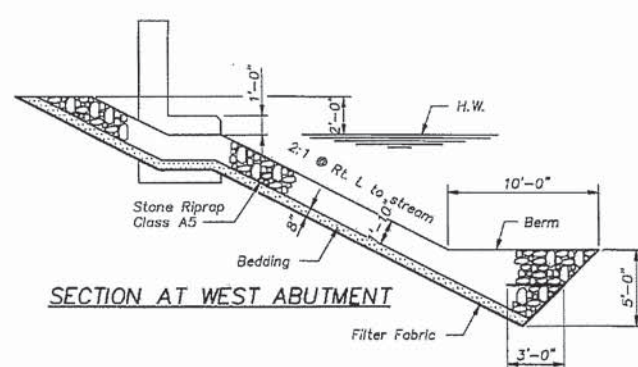
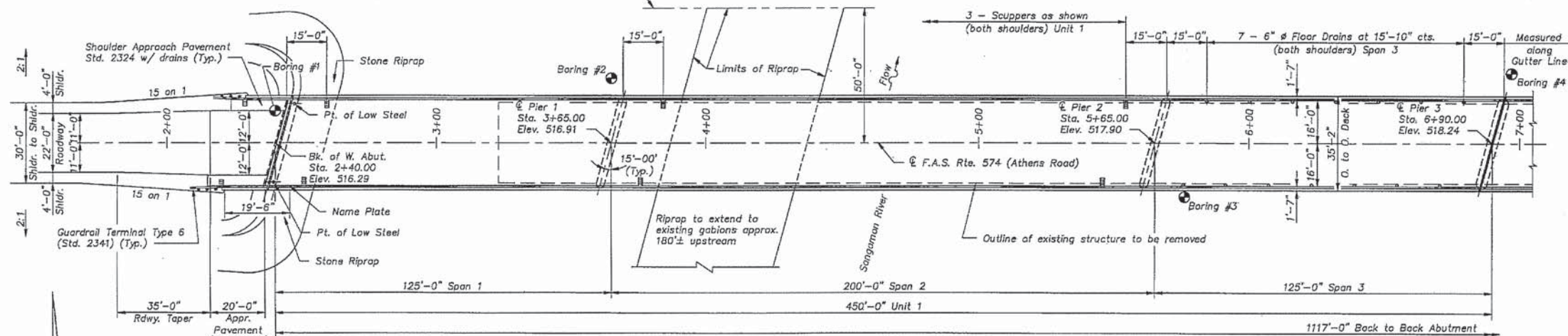
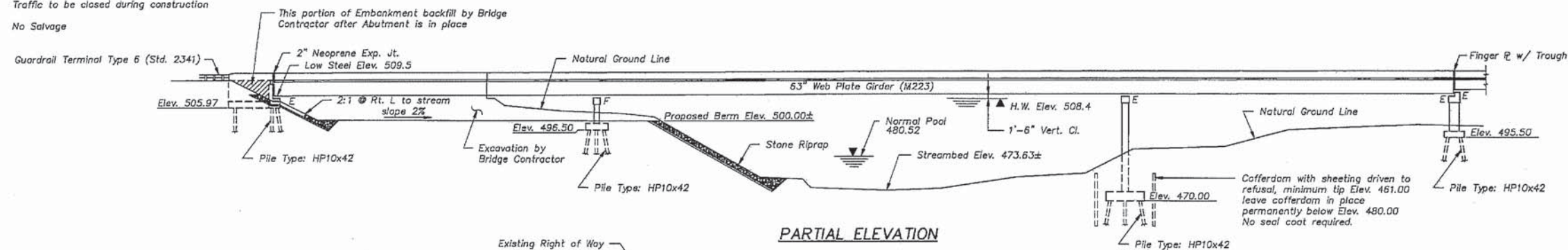
B.M.: Corps of Engineers disk on SW corner of existing West Abutment, F.A.S. Route 574, Sta. 3+23±, Elev. 515.52

Existing Structure: F.A.S. Rte. 574, Sta. 8+34, Sections 9B & 9F, Built in 1940, Structure No. 065-0009
 Structure length 1022 ft., Structure width 30 ft.
 Superstructure - Plate Girders and I-Beams with Reinforced Concrete Deck
 Substructure - Pile Bent Abutments, Solid Piers
 Existing superstructure and substructure to be removed by Bridge Contractor

Traffic to be closed during construction
 No Salvage

STATE OF ILLINOIS
 DEPARTMENT OF TRANSPORTATION

| | | | | | |
|-----------------------|---------|------------------|-------------|-----------|-----------|
| ROUTE NO. | SECTION | COUNTY | DATE | SHEET NO. | SHEET NO. |
| F.A.S. 574 | 9B-1 | MENARD | 74 | 12 | 38 SHEETS |
| FED. ROAD DIST. NO. 5 | KLING | FED. AID PROJECT | MS-574(102) | | |



WATERWAY INFORMATION

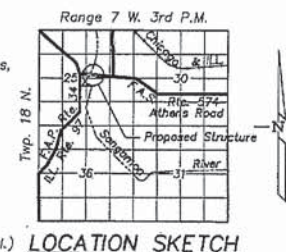
Drainage Area = 3053 sq.mi. Low Grade Elev. 514.00 @ Sta. 17+00

| Flood | Freq. Yr. | Q C.F.S. | Opening Sq.Ft. Exist. | Prop. | Nat. H.W.E. Exist. | Prop. | Headwater El. Exist. | Prop. |
|-------------|-----------|----------|-----------------------|--------|--------------------|-------|----------------------|-------|
| Design | 50 | 45,800 | 15,220 | 15,610 | 508.4 | 0.1 | 0.1 | 508.5 |
| Base | 100 | 51,800 | 16,095 | 16,340 | 509.5 | 0.2 | 0.2 | 509.7 |
| Overlapping | | | | | | | | |
| Max. Calc. | 500 | 66,050 | 16,970 | 16,720 | 511.8 | 0.3 | 0.4 | 512.1 |

DESIGN SPECIFICATIONS
 A.A.S.H.T.O. - Fourteenth Edition, 1989 & 1990 Interims, & 1983 Seismic Guide Specifications

LOADING HS20-44
 Allow 25#/sq.ft. for future wearing surface.

DESIGN STRESSES
 $f_c = 3,500$ psi
 $f_y = 60,000$ psi (Reinf.)
 $f_y = 50,000$ psi (M223-Grade 50-Struct. Stl.)
 $f_y = 36,000$ psi (M183-Struct. Stl.)



APPROVED
 FOR STRUCTURAL ADEQUACY ONLY

John R. Hines
 Licensed Structural Engineer

STATION 7+98.50
 BUILT 19 BY
 STATE OF ILLINOIS
 F.A.S. RT. 574 SEC. 9 B-1
 LOADING HS20
 STR. NO. 065-0019

NAME PLATE
 See Std. 2113

ATHENS ROAD OVER SANGAMON RIVER
 F.A.S. RTE. 574 SECTION 9 B-1
 MENARD COUNTY
 STA. 7+98.50
 STRUCTURE NO. 065-0019

PLAN AND ELEVATION - UNIT 1

| | |
|----------|--------|
| DESIGNED | P.R.C. |
| CHECKED | R.A.S. |
| DRAWN | P.R.C. |
| CHECKED | R.A.S. |

Kuhmann Design Group
 #1 GINGER CREEK MEADOWS
 EDWARDSVILLE, ILLINOIS 62025
 (618) 692-0808

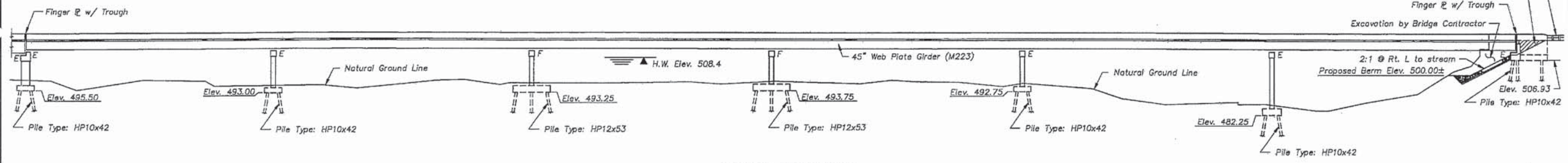


4-11-91

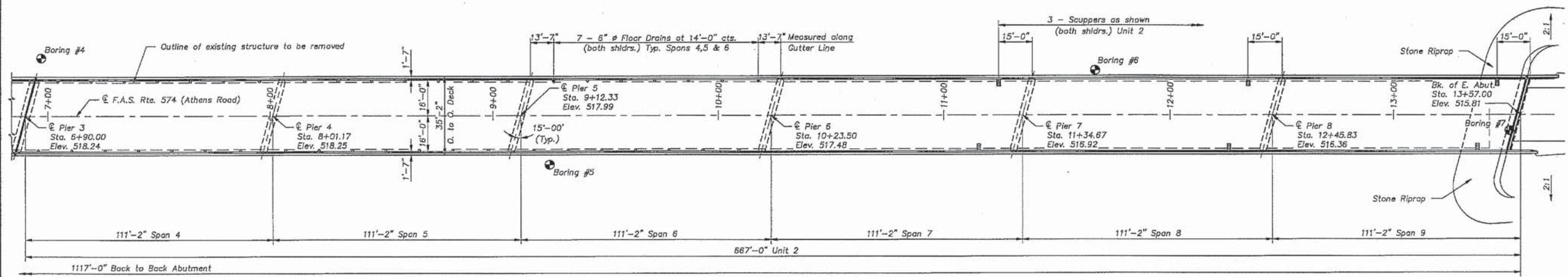
STATE OF ILLINOIS
DEPARTMENT OF TRANSPORTATION

| | | | | |
|--------------------|------------------------|--------|--------------|-----------|
| ROUTE NO. | SECTION | COUNTY | TOTAL SHEETS | SHEET NO. |
| 74 | D6 BGE PAINTING 2017-1 | MENARD | 11 | 4 |
| CONTRACT NO. 72J49 | | | | |

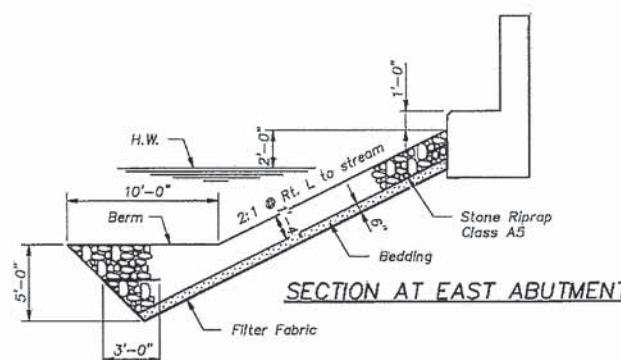
Guardrail Terminal Type 5 (Std. 2341)
This portion of Embankment backfill by Bridge Contractor after Abutment is in place



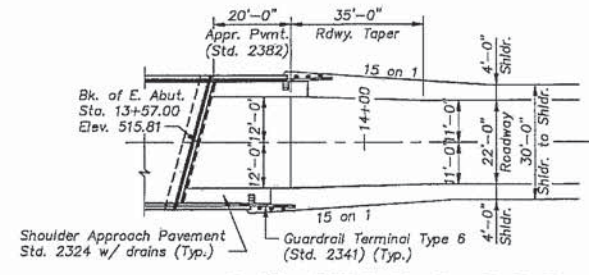
PARTIAL ELEVATION



PARTIAL PLAN



SECTION AT EAST ABUTMENT



EAST APPROACH PAVEMENT

| | | |
|----------|--------|--|
| DESIGNED | P.R.C. | Kuhlmann Design Group #1 CHICAGO CREEK MEADOWS EDWARDSVILLE, ILLINOIS 62025 (618) 692-0808 |
| CHECKED | R.A.S. | |
| DRAWN | P.R.C. | |
| CHECKED | R.A.S. | |

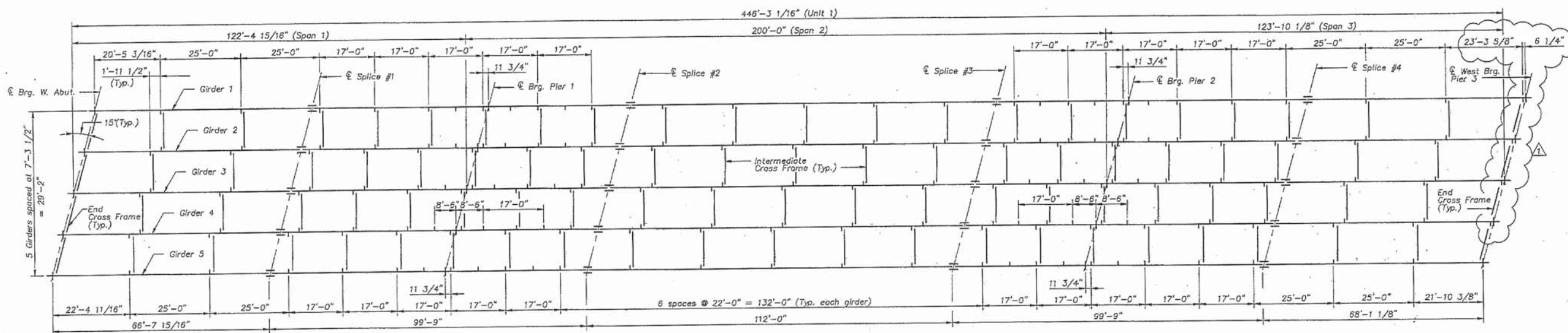
4-11-91

ATHENS ROAD OVER SANGAMON RIVER
F.A.S. RTE. 574 SECTION 9 B-1
MENARD COUNTY
STA. 7+98.50
STRUCTURE NO. 065-0019

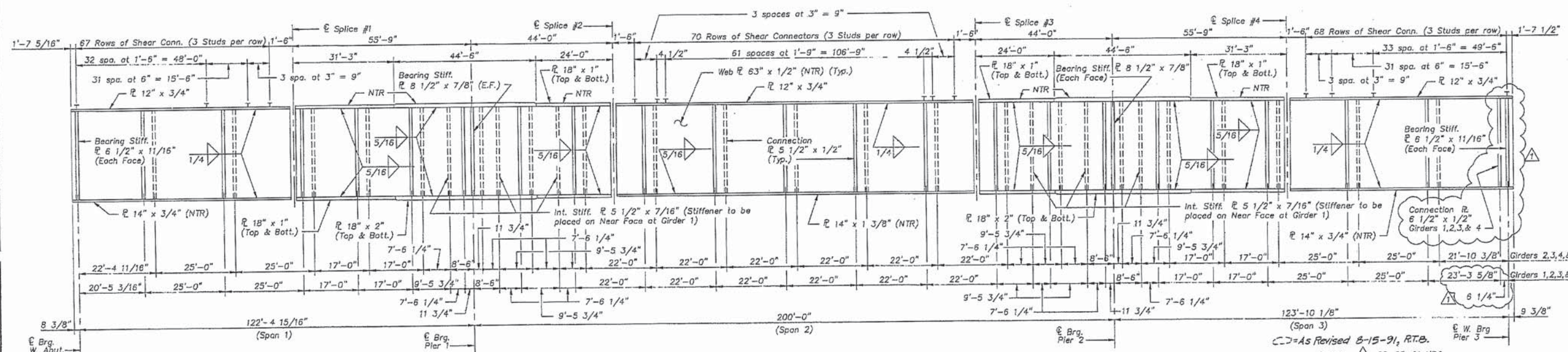
PLAN AND ELEVATION - UNIT 2

STATE OF ILLINOIS
DEPARTMENT OF TRANSPORTATION

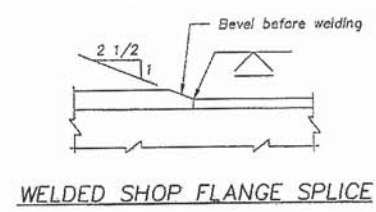
| | | | | |
|-----------|---------|--------|------------|-----------|
| ROUTE NO. | SECTION | COUNTY | POST MILES | SHEET NO. |
| 574 | 015B-1 | MENARD | 74 | 38 |
| SHEETS | | | | |



STEEL FRAMING PLAN - UNIT 1



GIRDER ELEVATION - UNIT 1
(Girders 2, 3, & 4 shown)
(Girders 1 & 5 similar)



AS REVISED

Notes:
All flange and web plates and bearing stiffeners for Plate Girder shall be AASHTO M223, Grade 50.
NTR denotes plates to which notch toughness requirements are applicable.
For Field Splice, Shear Connector and Stiffener Details, see Sheet 23.
For Cross Frame Details, see Sheet 24.
Cut end of girders parallel to skew at Abutment and Pier 3, see Sheet 23 for detail.

ATHENS ROAD OVER SANGAMON RIVER
F.A.S. RTE. 574 SECTION 9 B-1
MENARD COUNTY
STA. 7+98.50
STRUCTURE NO. 065-0019

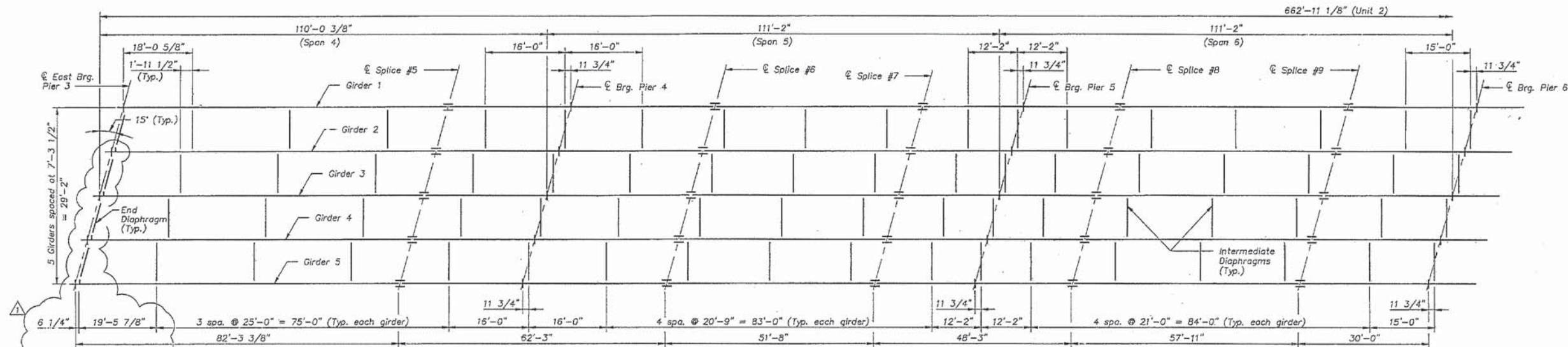
STEEL FRAMING PLAN &
GIRDER ELEVATION - UNIT 1

| | | |
|----------|---------------|--|
| DESIGNED | P.R.C. | <p>Kuhlmann Design Group #1 GINGER CREEK MEADOWS EDWARDSVILLE, ILLINOIS 62025 (618) 692-0808</p> |
| CHECKED | R.A.S. | |
| DRAWN | P.R.C./S.E.S. | |
| CHECKED | P.R.C./R.A.S. | |

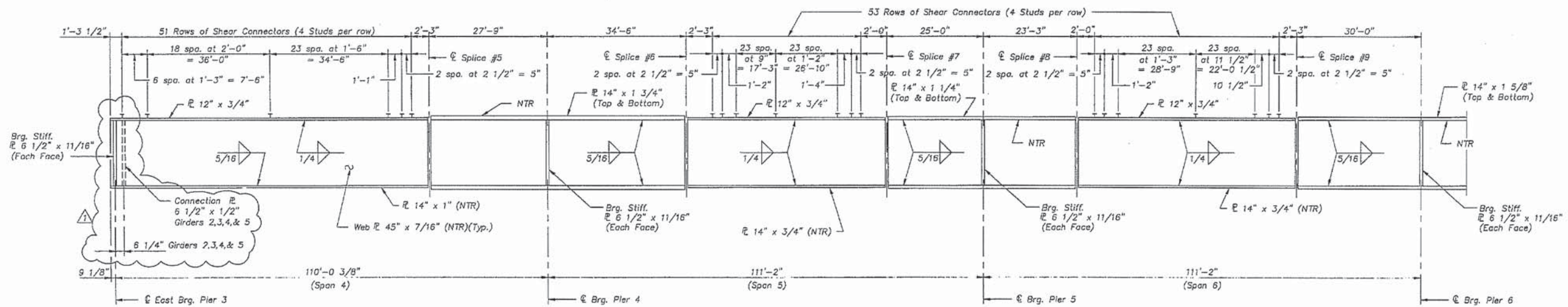
4-11-91

STATE OF ILLINOIS
DEPARTMENT OF TRANSPORTATION

| | | | | |
|-----------------------|-------------------------|------------------|--------------|--------------|
| ROUTE NO. | SECTION | COUNTY | SHEET | SHEET NO. 21 |
| F.A.S. 574 | 06 BDGE PAINTING 2017-1 | MENARD | 74 | 38 SHEETS |
| FED. ROAD DIST. NO. 5 | BRIDGE | FED. AID PROJECT | 843-574(102) | |



PARTIAL STEEL FRAMING PLAN - UNIT 2



PARTIAL GIRDER ELEVATION - UNIT 2

(---) = As Revised 8-15-91, R.T.B.
Revision Δ 08-05-91 KPC

Notes:
All flange and web plates and bearing stiffeners for Plate Girders shall be AASHTO M223, Grade 50.
NTR denotes plates to which notch toughness requirements are applicable.
For Field Splice, Shear Connector and Stiffener Details, see Sheet 23.
For Diaphragm details, see Sheet 24.
Cut end of girder parallel to skew at Pier 3, see Sheet 23 for detail.

AS REVISED

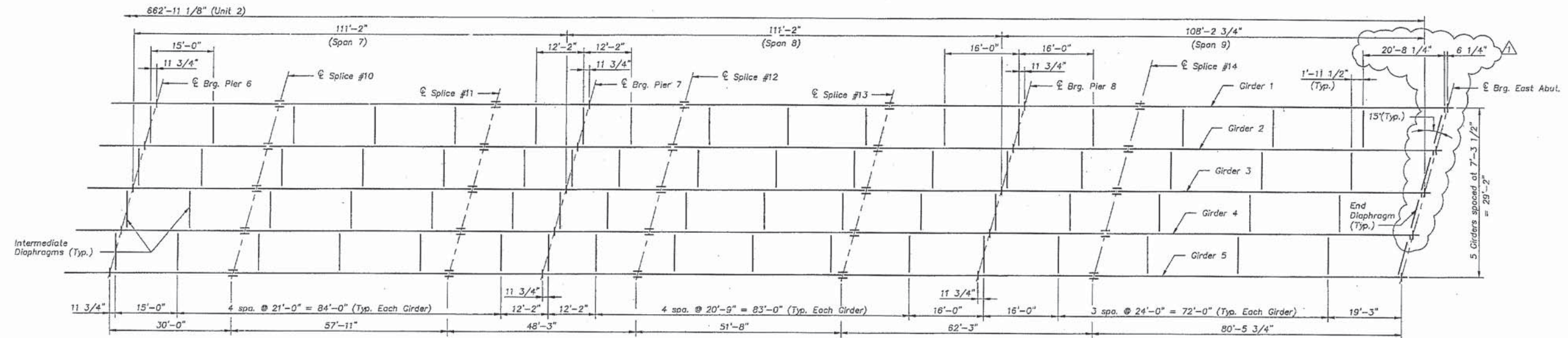
ATHENS ROAD OVER SANGAMON RIVER
F.A.S. RTE. 574 SECTION 9 B-1
MCNARD COUNTY
STA. 7+98.50
STRUCTURE NO. 065-0019

PARTIAL STEEL FRAMING PLAN & GIRDER ELEVATION - UNIT 2

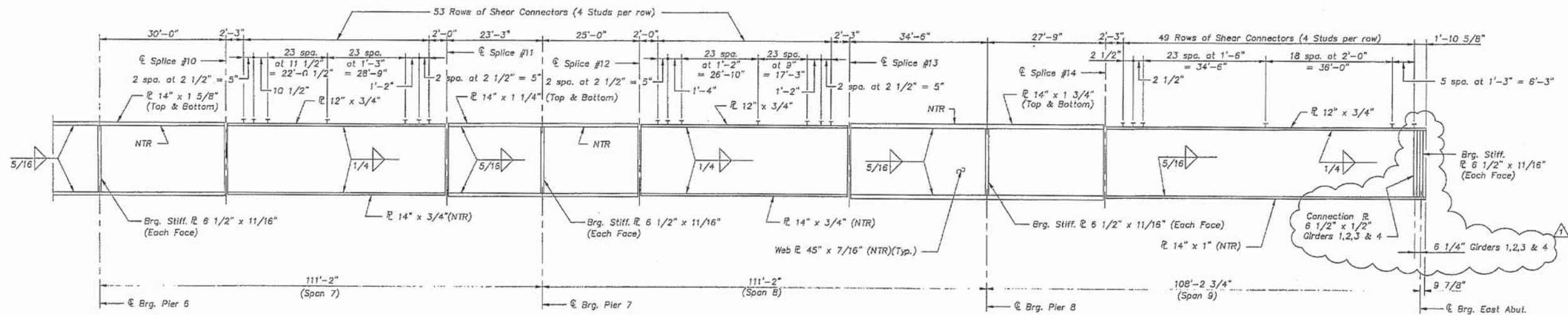
| | | |
|----------|---------------|---|
| DESIGNED | S.O.O. | #1 GINGER CREEK MEADOWS EDWARDSVILLE, ILLINOIS 62025 (918) 692-0808 |
| CHECKED | R.A.S. | |
| DRAWN | P.R.C./S.E.S. | |
| CHECKED | P.R.C./R.A.S. | |
| 4-11-91 | | |

STATE OF ILLINOIS
DEPARTMENT OF TRANSPORTATION

| | | | | |
|-----------------------|-----------------|------------------|--------------|--------------|
| ROUTE NO. | SECTION | COUNTY | SHEET NO. | SHEET NO. 22 |
| 574 | 06 BGE PAINTING | MENARD | 74 | 38 SHEETS |
| FED. ROAD DIST. NO. 5 | BLINDS | FED. AID PROJECT | 065-574(102) | |



PARTIAL STEEL FRAMING PLAN - UNIT 2



PARTIAL GIRDER ELEVATION - UNIT 2

| | |
|----------|---------------|
| DESIGNED | S.O.O. |
| CHECKED | R.A.S. |
| DRAWN | P.R.C./S.E.S. |
| CHECKED | P.R.C./R.A.S. |
| 4-11-91 | |

Kuhmann Design Group
#1 GINGER CREEK MEADOWS
EDWARDSVILLE, ILLINOIS 62025
(618) 692-0808

AS REVISED

Notes:
All flange and web plates and bearing stiffeners for plate girder shall be AASHTO M223, Grade 50.
NTR denotes plates to which notch toughness requirements are applicable.
For Field Splice, Shear Connector and Stiffener Details, see Sheet 23.
For Diaphragm details, see Sheet 24.
Cut end of girders parallel to skew at Abutment, see Sheet 23 for detail.

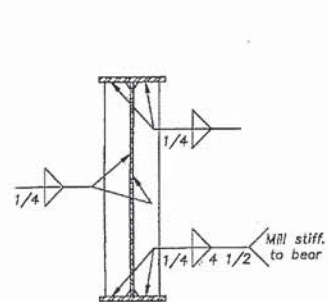
As Revised 8-15-91, R.T.B.
Revision 08-05-91 KPC

ATHENS ROAD OVER SANGAMON RIVER
F.A.S. RTE. 574 SECTION 9 B-1
MENARD COUNTY
STA. 7+98.50
STRUCTURE NO. 065-0019

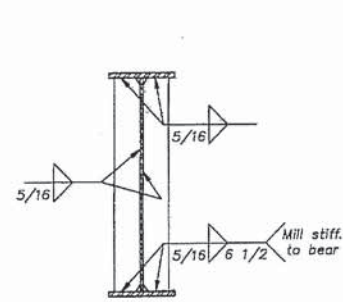
PARTIAL STEEL FRAMING PLAN &
GIRDER ELEVATION - UNIT 2

STATE OF ILLINOIS
DEPARTMENT OF TRANSPORTATION

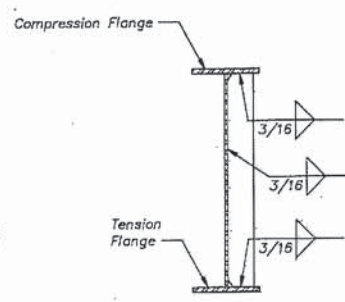
| | | | | |
|---------------------------|---------|--------|-----------|-------|
| ROUTE NO. | SECTION | COUNTY | SHEET NO. | SHEET |
| 74 | 9 B-1 | MENARD | 74 | 33 |
| SHEET NO. 23 38 SHEETS | | | | |



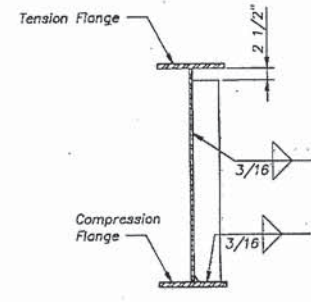
SECTION AT
BEARING STIFFENER
(Excluding Piers 1 and 2)



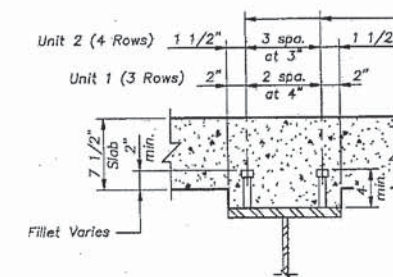
SECTION AT
BEARING STIFFENER
(At Piers 1 and 2 only)



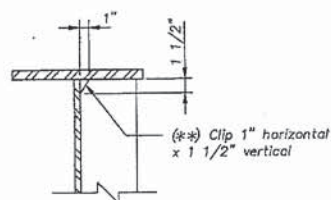
SECTION AT CROSS FRAME
CONNECTION PLATE



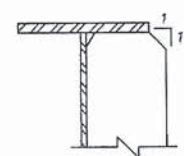
SECTION AT
INTERMEDIATE STIFFENER



SHEAR CONNECTOR DETAIL



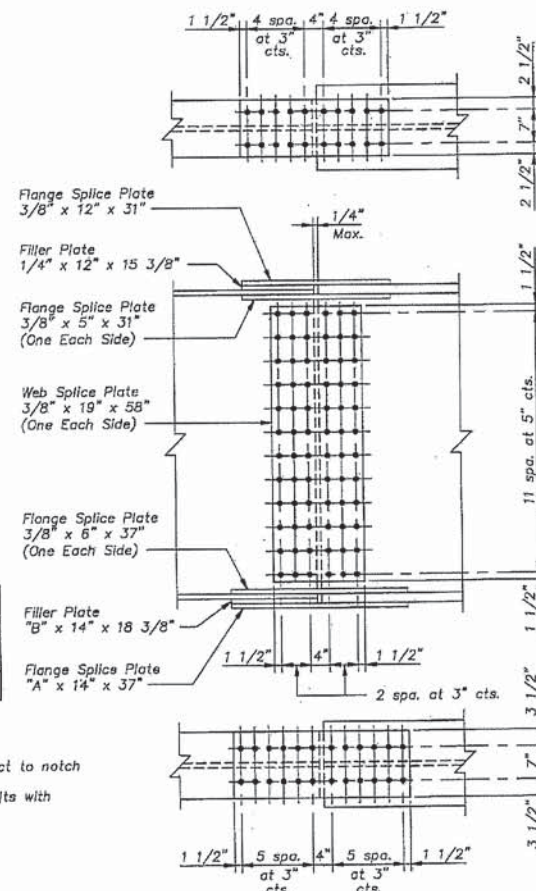
CLIP DETAIL
(**) Clip top & bottom at bearing stiffener and connection plates.
Clip at junction of compression flange and web for intermediate stiffeners.



STIFFENER BEVEL DETAIL

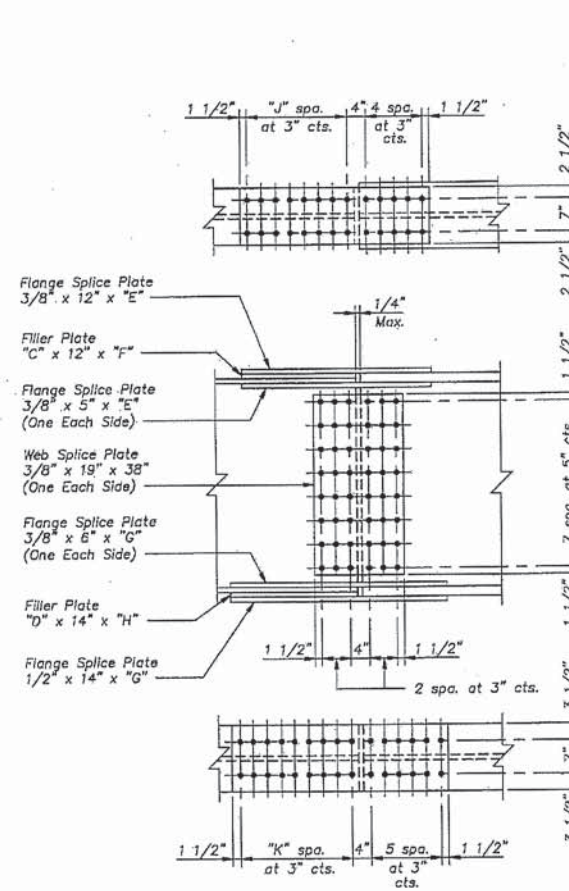
| FIELD SPLICE | THICKNESS | |
|--------------|-----------|------|
| | A | B |
| #1 & #4 | 3/8" | 1/4" |
| #2 & #3 | 5/8" | 3/8" |

Note:
All splice plates to be subject to notch toughness requirements.
Use 7/8" High Strength Bolts with 15/16" reamed holes.



FIELD SPLICE #1, #2, #3 & #4 DETAIL

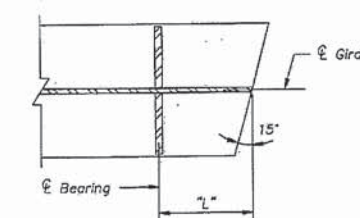
Note: All splice plate material (except fill plates) shall be AASHTO M223, Grade 50.



FIELD SPLICE #5 THROUGH #14 DETAIL

Note: All splice plate material (except fill plates) shall be AASHTO M223, Grade 50.

| LOCATION | DIM. "L" |
|----------------|----------|
| West Abut. | 8 3/8" |
| Pier 3 W. Brg. | 9 3/8" |
| Pier 3 E. Brg. | 9 1/8" |
| East Abut. | 9 7/8" |



DETAIL AT END OF GIRDER

| FIELD SPLICE | THICKNESS | | LENGTH | | | | | SPACES | |
|--------------|-----------|------|--------|---------|-----|---------|---|--------|--|
| | C | D | E | F | G | H | J | K | |
| #5 | 1" | 3/4" | 40" | 24 3/8" | 46" | 27 3/8" | 7 | 8 | |
| #6 | 1" | 1" | 40" | 24 3/8" | 46" | 27 3/8" | 7 | 8 | |
| #7 | 1/2" | 1/2" | 37" | 21 3/8" | 43" | 24 3/8" | 6 | 7 | |
| #8 | 1/2" | 1/2" | 37" | 21 3/8" | 43" | 24 3/8" | 6 | 7 | |
| #9 | 7/8" | 7/8" | 40" | 24 3/8" | 46" | 27 3/8" | 7 | 8 | |
| #10 | 7/8" | 7/8" | 40" | 24 3/8" | 46" | 27 3/8" | 7 | 8 | |
| #11 | 1/2" | 1/2" | 37" | 21 3/8" | 43" | 24 3/8" | 6 | 7 | |
| #12 | 1/2" | 1/2" | 37" | 21 3/8" | 43" | 24 3/8" | 6 | 7 | |
| #13 | 1" | 1" | 40" | 24 3/8" | 46" | 27 3/8" | 7 | 8 | |
| #14 | 1" | 3/4" | 40" | 24 3/8" | 46" | 27 3/8" | 7 | 8 | |

ATHENS ROAD OVER SANGAMON RIVER
F.A.S. RTE. 574 SECTION 9 B-1
MENARD COUNTY
STA. 7+98.50
STRUCTURE NO. 065-0019

MISCELLANEOUS
STEEL DETAILS

| | |
|----------|--------|
| DESIGNED | R.A.S. |
| CHECKED | S.O.O. |
| DRAWN | P.R.C. |
| CHECKED | R.A.S. |

Kuhlmann Design Group
#1 GINGER CREEK MEADOWS
EDWARDSVILLE, ILLINOIS 62025
(618) 692-0808

4-11-91

STATE OF ILLINOIS
DEPARTMENT OF TRANSPORTATION

EXISTING BRIDGE PLANS, SN 065-0019
(FOR INFORMATION ONLY)

| | | | | |
|--------------------|-------------------------|--------|--------------|-----------|
| F.A.S. RTE. | SECTION | COUNTY | TOTAL SHEETS | SHEET NO. |
| 574 | D6 BDGE PAINTING 2017-1 | MENARD | 11 | 8 |
| CONTRACT NO. 72J49 | | | | |

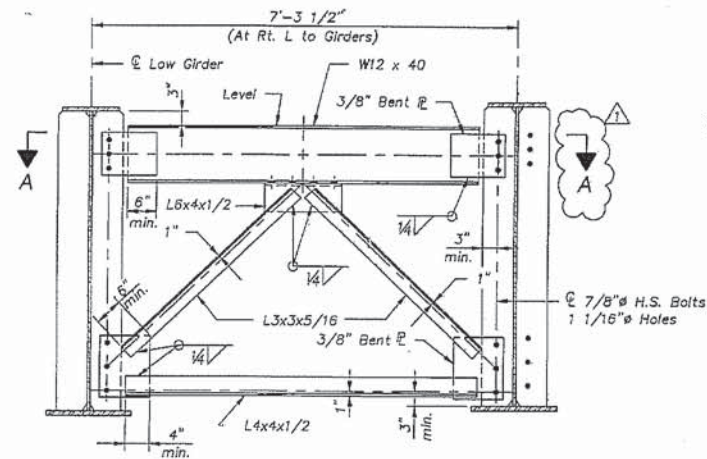
| | | | |
|--|------------------------------|------------|-----------|
| FILE NAME = | USER NAME = dudleybm | DESIGNED - | REVISED - |
| D:\OPERATIONS\Bridges\Brdgeplans.CAD\72J49 - 0650019 paint\plansheet.dgn | | DRAWN - | REVISED - |
| Default | PLOT SCALE = 100.0000' / in. | CHECKED - | REVISED - |
| | PLOT DATE = 10/28/2016 | DATE - | REVISED - |

SCALE: SHEET OF SHEETS STA. TO STA.

ILLINOIS FED. AID PROJECT

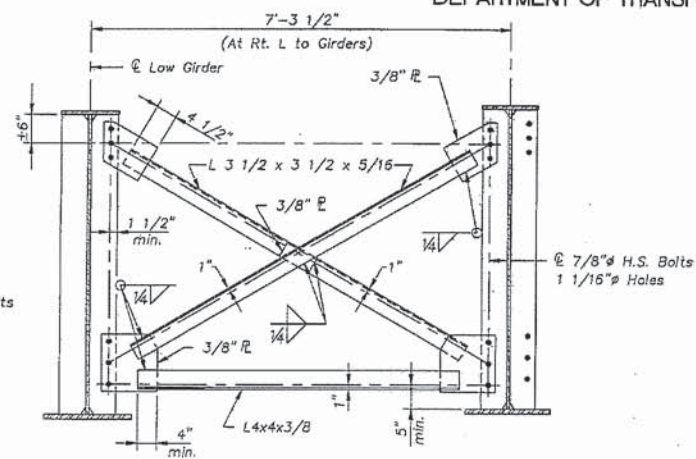
STATE OF ILLINOIS
DEPARTMENT OF TRANSPORTATION

| | | | | | |
|-----------------------|----------|------------------|--------------|-----------|--------------|
| ROUTE NO. | SECTION | COUNTY | STA. | SHEET NO. | SHEET NO. 24 |
| F.A.S. 574 | D/RS-B-1 | MENARD | 74 | 34A | 38 SHEETS |
| FED. ROAD DIST. NO. 3 | LEAPROD | FED. AID PROJECT | BRS-574(102) | | |



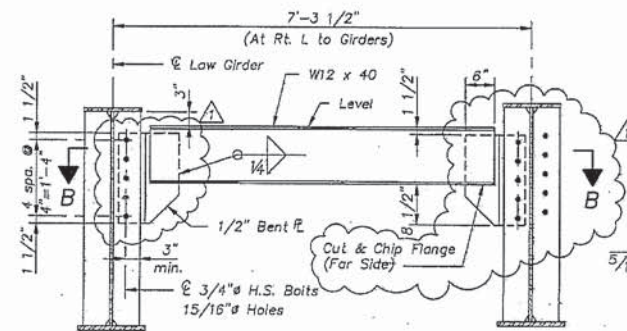
TYPICAL END CROSS FRAME - UNIT 1

Note: Two hardened washers shall be required over all oversize holes for end cross frames.



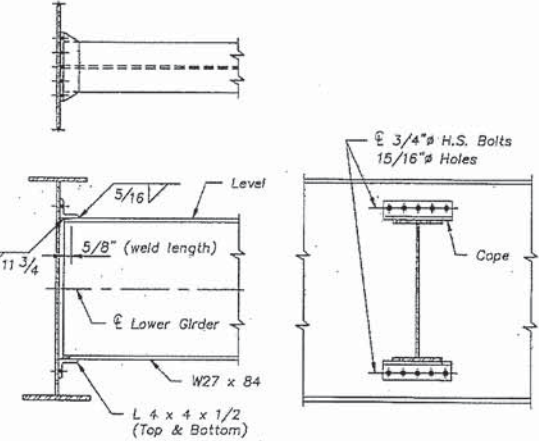
TYPICAL INTERMEDIATE CROSS FRAME - UNIT 1

Note: Two hardened washers shall be required over all oversize holes for intermediate cross frames.



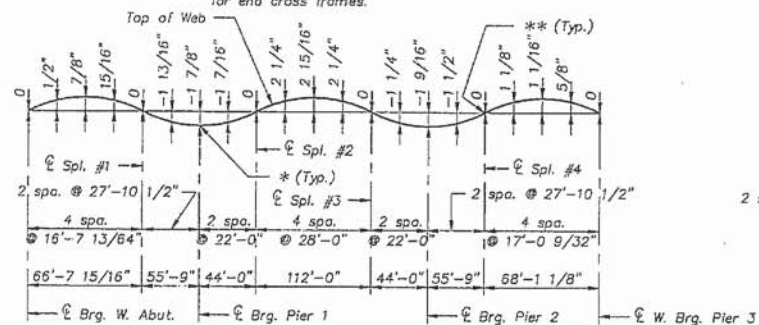
TYPICAL END DIAPHRAGM - UNIT 2

Note: Two hardened washers shall be required over all oversize holes for end diaphragms.



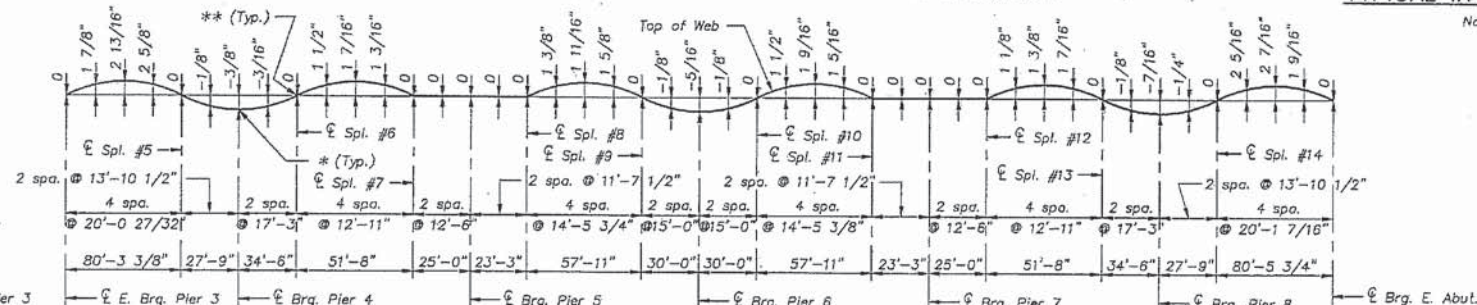
TYPICAL INTERMEDIATE DIAPHRAGM - UNIT 2

Note: Two hardened washers shall be required over all oversize holes for intermediate diaphragms.



UNIT 1 - CAMBER DIAGRAM

* Final top of web elevations for computing bearing seat elevations.
** Theoretical elevations before Dead Load deflection.



UNIT 2 - CAMBER DIAGRAM

* Final top of web elevations for computing bearing seat elevations.
** Theoretical elevations before Dead Load deflection.

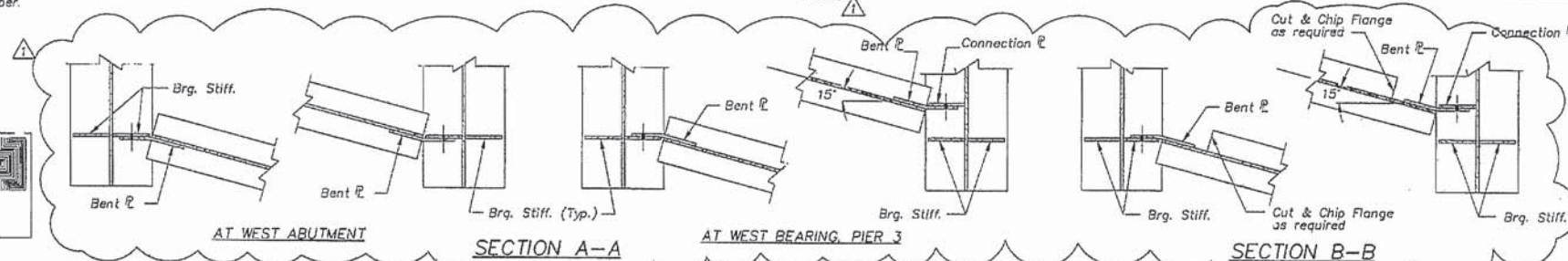
TOP OF WEB ELEVATIONS
(For fabrication only)

| Beam No. | Unit 1 | | | | | | | | Unit 2 | | | | | | | | | | | | | | | | |
|----------|------------------|--------------|--------------|--------------|--------------|--------------|--------------|-----------------|-----------------|--------------|--------------|--------------|--------------|--------------|--------------|--------------|--------------|---------------|---------------|--------------|---------------|---------------|--------------|---------------|------------------|
| | Brig. West Abut. | Splice No. 1 | Brig. Pier 1 | Splice No. 2 | Splice No. 3 | Brig. Pier 2 | Splice No. 4 | W. Brig. Pier 3 | E. Brig. Pier 3 | Splice No. 5 | Brig. Pier 4 | Splice No. 6 | Splice No. 7 | Splice No. 8 | Brig. Pier 5 | Splice No. 9 | Brig. Pier 6 | Splice No. 10 | Splice No. 11 | Brig. Pier 7 | Splice No. 12 | Splice No. 13 | Brig. Pier 8 | Splice No. 14 | Brig. East Abut. |
| 1 | 515.33 | 515.64 | 515.84 | 516.27 | 516.81 | 516.80 | 517.08 | 517.25 | 517.25 | 517.30 | 517.20 | 517.13 | 517.02 | 516.95 | 516.88 | 516.57 | 516.39 | 516.27 | 516.00 | 515.87 | 515.73 | 515.43 | 515.27 | 515.21 | 514.81 |
| 2 | 515.45 | 515.76 | 515.96 | 516.39 | 516.94 | 516.93 | 517.21 | 517.38 | 517.38 | 517.40 | 517.30 | 517.23 | 517.15 | 517.08 | 517.00 | 516.71 | 516.53 | 516.41 | 516.14 | 516.01 | 515.87 | 515.57 | 515.41 | 515.35 | 514.95 |
| 3 | 515.55 | 515.86 | 516.06 | 516.49 | 517.05 | 517.04 | 517.32 | 517.49 | 517.49 | 517.52 | 517.42 | 517.35 | 517.27 | 517.20 | 517.12 | 516.83 | 516.65 | 516.53 | 516.26 | 516.13 | 515.99 | 515.69 | 515.53 | 515.47 | 515.07 |
| 4 | 515.43 | 515.74 | 515.94 | 516.37 | 516.93 | 516.92 | 517.20 | 517.37 | 517.37 | 517.41 | 517.31 | 517.24 | 517.16 | 517.09 | 517.01 | 516.72 | 516.54 | 516.42 | 516.15 | 516.02 | 515.88 | 515.58 | 515.42 | 515.36 | 514.96 |
| 5 | 515.29 | 515.60 | 515.80 | 516.22 | 516.78 | 516.78 | 517.06 | 517.24 | 517.24 | 517.28 | 517.18 | 517.11 | 517.04 | 516.97 | 516.89 | 516.60 | 516.42 | 516.30 | 516.03 | 515.90 | 515.76 | 515.46 | 515.30 | 515.24 | 514.84 |

Note: Elevations at splices have been adjusted for camber.

| | |
|----------|---------------|
| DESIGNED | P.R.C. |
| CHECKED | R.A.S. |
| DRAWN | P.R.C./S.E.S. |
| CHECKED | P.R.C./R.A.S. |

Kuhlmann Design Group
#1 GINGER CREEK MEADOWS
EDWARDSVILLE, ILLINOIS 62025
(618) 692-0808



AS REVISED

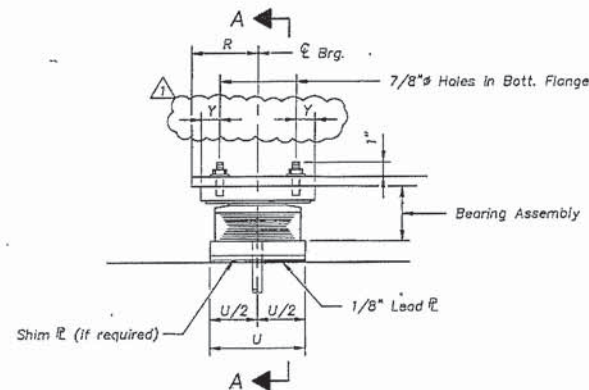
As Revised 8-15-91, R.T.B.
Revision 08-05-91 KPC

ATHENS ROAD OVER SANGAMON RIVER
F.A.S. RTE. 574 SECTION 9 B-1
MENARD COUNTY
STA. 7+98.50
STRUCTURE NO. 055-0019

DIAPHRAGM AND
CROSS FRAME DETAILS

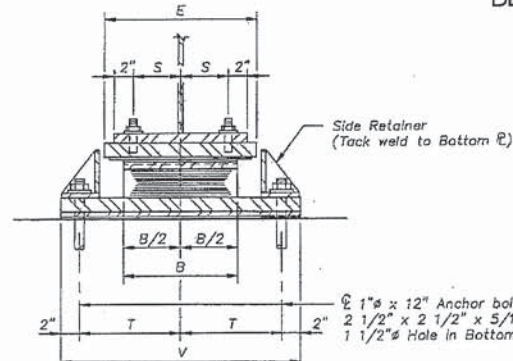
STATE OF ILLINOIS
DEPARTMENT OF TRANSPORTATION

| | | | | | |
|-----------------------|----------|------------------|--------------|---------|-----------|
| ROUTE NO. | SECTION | COUNTY | SHEET | PROJECT | SHEET NO. |
| 574 | 9/RS-0-1 | MENARD | 74 | (37A) | 38 SHEETS |
| FED. ROAD DIST. NO. 3 | ALBANY | FED. AID PROJECT | ERS-574(102) | | |



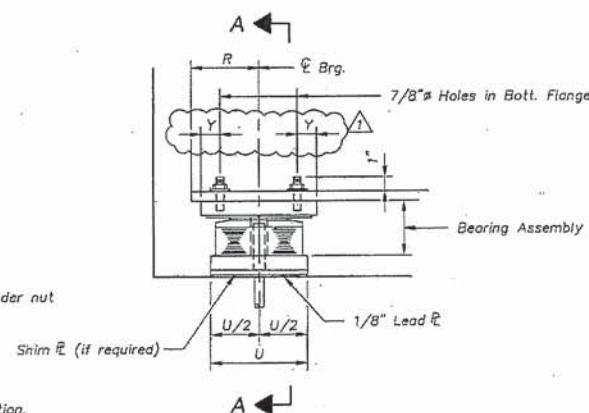
ELEVATION AT PIER

(Elevation at Pier 3 shown, Elevation at Pier 8 similar)



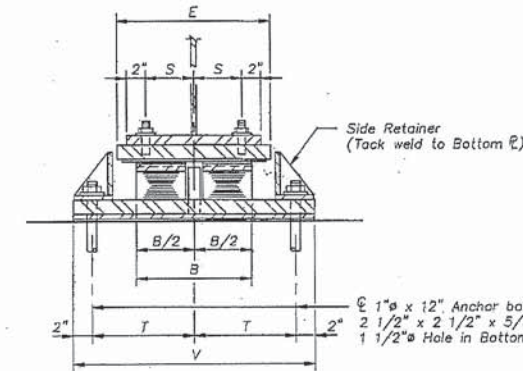
SECTION A-A

Note: See Sheet 37 for Anchor Bolt Installation.



ELEVATION AT ABUTMENT

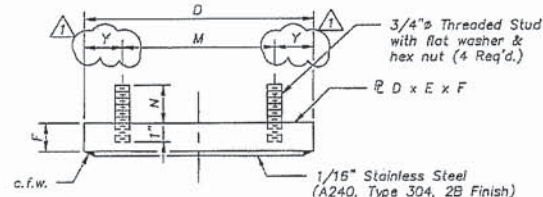
(Elevation at Pier similar)



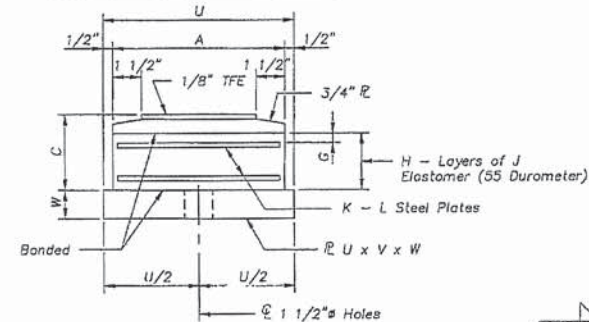
SECTION A-A

Note: See Sheet 37 for Anchor Bolt Installation.

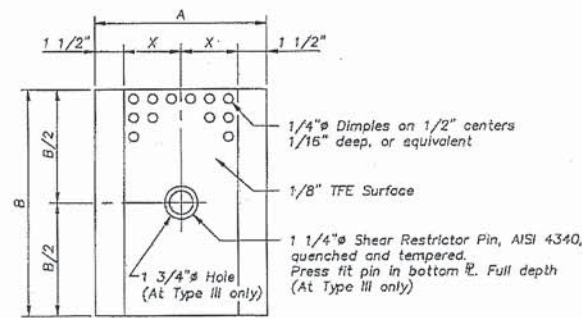
TYPE II ELASTOMERIC EXPANSION BEARING



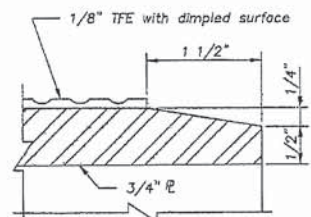
TOP BEARING ASSEMBLY



BOTTOM BEARING ASSEMBLY



PLAN - TFE ELASTOMERIC BEARING

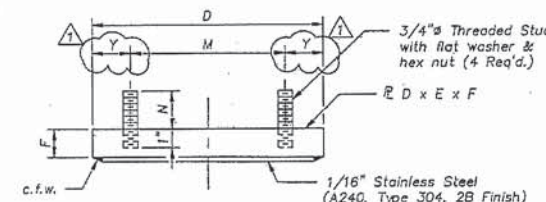


SECTION THRU TFE

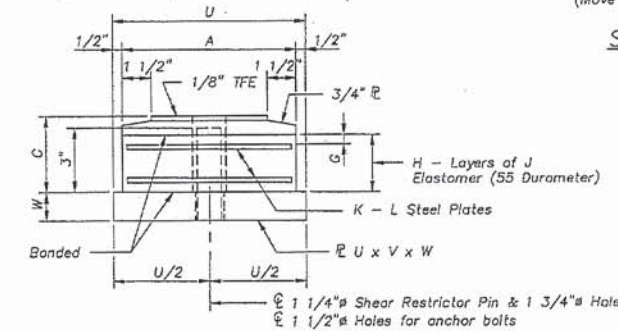
Note: The 1/8" TFE sheet shall be bonded directly to the top steel plate with a two-component, medium viscosity epoxy resin, conforming to the requirements of the Federal Specifications MMM-A-134, Type I. The bond agent shall be applied on the full area of the contact surfaces.

Bonding of 1/8" TFE sheet during vulcanizing process will be permitted provided the process and method of adjusting assembly height is approved by the Engineer.

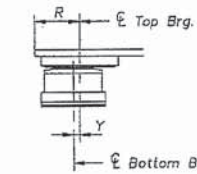
TYPE III ELASTOMERIC EXPANSION BEARING



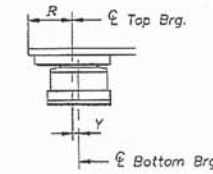
TOP BEARING ASSEMBLY



BOTTOM BEARING ASSEMBLY



BELOW 50° F.
(Move bottom brg. away from fixed brg.)



ABOVE 50° F.
(Move bottom brg. toward fixed brg.)

SETTING ANCHOR BOLTS AT EXPANSION BEARING

Y = 1/8" per each 100' of expansion for every 15° temperature change from the normal temperature of 50° F.

BILL OF MATERIAL

| Item | Unit | Total |
|---------------------------------------|------|-------|
| Elastomeric Bearing Assembly Type II | Each | 10 |
| Elastomeric Bearing Assembly Type III | Each | 10 |

AS REVISED

As Revised 8-15-91, R.T.B.
Revision 08-05-91 KPC

SIDE RETAINER
Equivalent rolled angle with stiffeners will be allowed in lieu of welded plates.

DESIGNED P.R.C./R.A.S.
CHECKED R.A.S./S.O.O.
DRAWN P.R.C.
CHECKED R.A.S.

Kuhlmann Design Group
#1 GINGER CREEK MEADOWS
EDWARDSVILLE, ILLINOIS 62025
(618) 692-0808

4-11-91

ELASTOMERIC BEARING ASSEMBLY TABLE

| Location | Type | A | B | C | D | E | F | G | H | J | K | L | M | N | P | R | S | T | U | V | W | X | Y |
|-------------|------|-----|-----|---------|---------|-----|--------|-------|---|-------|---|-------|---------|--------|----------|--------|----|---------|-----|---------|--------|--------|--------|
| Pier 3 East | II | 10" | 14" | 5 1/4" | 12 1/2" | 16" | 1 3/4" | 7/16" | 8 | 7/16" | 7 | 1/8" | 8 1/2" | 2" | 8 11/16" | 9 1/8" | 5" | 10 1/4" | 11" | 24 1/2" | 1 1/4" | 3 1/2" | 2" |
| Pier 8 | II | 18" | 24" | 5 3/8" | 20 1/2" | 26" | 2 3/4" | 3/4" | 5 | 3/4" | 4 | 3/16" | 16 1/2" | 2 3/4" | 9 13/16" | — | 5" | 15 1/4" | 19" | 34 1/2" | 1 1/4" | 7 1/2" | 2" |
| Pier 3 West | III | 10" | 14" | 3 9/16" | 13" | 16" | 1 3/4" | 7/16" | 5 | 7/16" | 4 | 1/8" | 9" | 1 3/4" | 7" | 9 3/8" | 5" | 10 1/4" | 11" | 24 1/2" | 1 1/4" | 3 1/2" | 2" |
| East Abut. | III | 10" | 14" | 3 9/16" | 14" | 16" | 1 5/8" | 7/16" | 5 | 7/16" | 4 | 1/8" | 9" | 2" | 7" | 9 1/8" | 5" | 10 1/4" | 11" | 24 1/2" | 1 1/4" | 3 1/2" | 2 1/2" |

ATHENS ROAD OVER SANGAMON RIVER
F.A.S. RTE. 574 SECTION 9 B-1
MENARD COUNTY
STA. 7+98.50
STRUCTURE NO. 065-0019

BEARING DETAILS

