

STATE OF ILLINOIS
DEPARTMENT OF TRANSPORTATION
DIVISION OF HIGHWAYS

**PROPOSED
HIGHWAY PLANS**

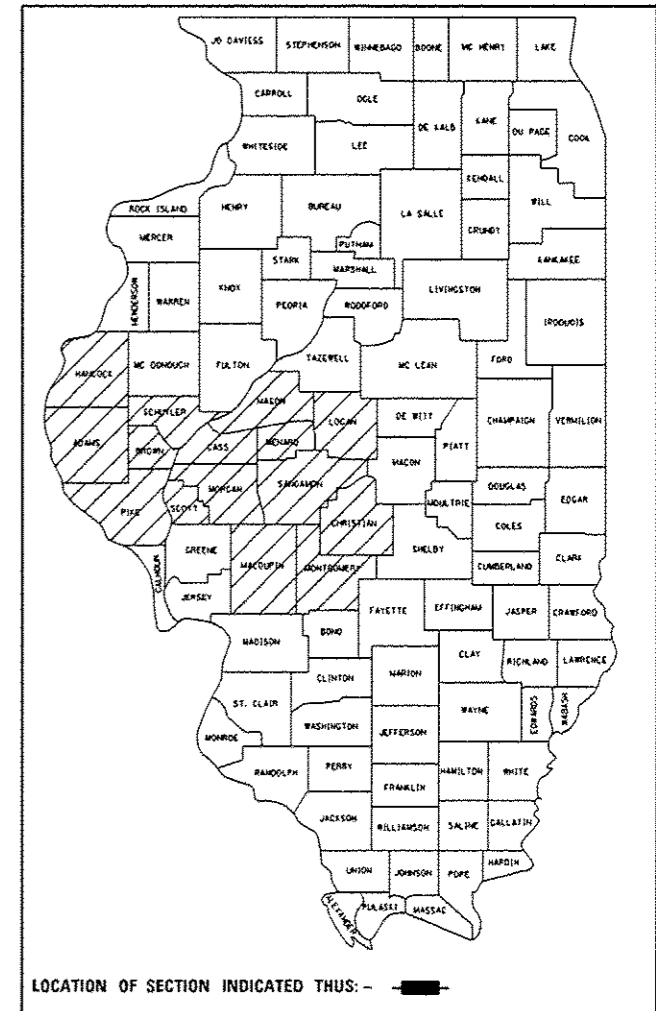
VARIOUS ROUTES
SECTION D6 CABLE/GUARDRAIL 2017-2

SAFETY ITEM REPAIR
VARIOUS COUNTIES IN D6
C-96-011-17

F.A. RTE.	SECTION	COUNTY	TOTAL SHEETS	SHEET NO.
*VAR	**	VARIOUS	17	1
		ILLINOIS	CONTRACT NO. 72J52	

*D6 CABLE/GUARDRAIL 2017-2

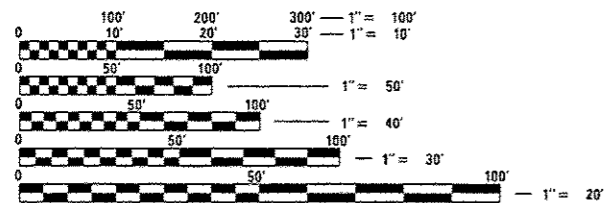
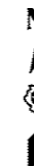
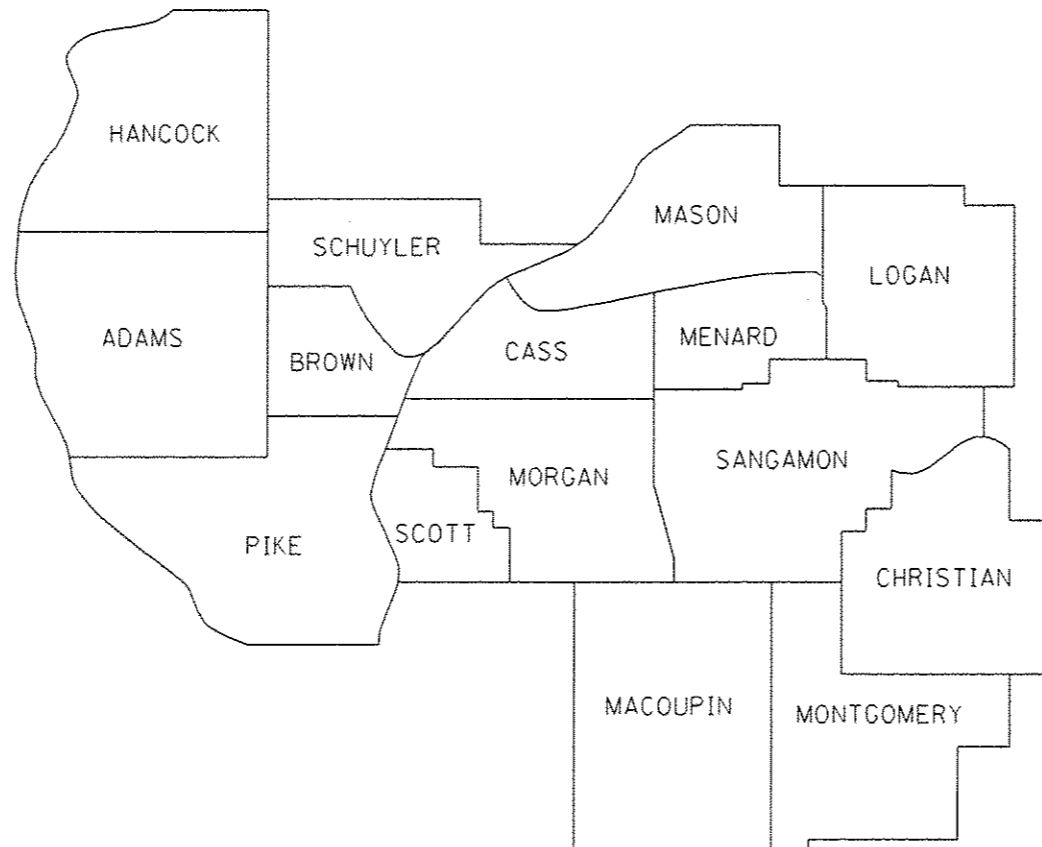
D-96-011-17



INDEX OF SHEETS

- 1 COVER SHEET
- 2 GENERAL NOTES
- 3-5 SUMMARY OF QUANTITIES
- 6-16 PRE-MGS HIGHWAY STANDARDS
- 17 CABLE GUARD MARKER DETAIL

FOR LIST OF STANDARDS, SEE SHEET 2



FULL SIZE PLANS HAVE BEEN PREPARED USING STANDARD ENGINEERING SCALES. REDUCED SIZED PLANS WILL NOT CONFORM TO STANDARD SCALES. IN MAKING MEASUREMENTS ON REDUCED PLANS, THE ABOVE SCALES MAY BE USED.

J.U.L.I.E.
JOINT UTILITY LOCATION INFORMATION FOR EXCAVATION
1-800-892-0123
OR 811

ACTING TEAM ENGINEER: JAY EDWARDS 217-785-0597
TEAM MANAGER: JONATHAN COX 217-782-1378

CONTRACT NO. 72J52

STATE OF ILLINOIS
DEPARTMENT OF TRANSPORTATION

SUBMITTED *October 17, 2016*

[Signature]
DEPUTY DIRECTOR OF HIGHWAYS REGION ENGINEER

Dec 9, 2016
[Signature]
ENGINEER OF DESIGN AND ENVIRONMENT

Dec 9, 2016
[Signature]
DIRECTOR OF PROGRAM DEVELOPMENT

PRINTED BY THE AUTHORITY
OF THE STATE OF ILLINOIS

HIGHWAY STANDARDS

STANDARD NO.	TITLE
630001-11	STEEL PLATE BEAM GUARDRAIL
630101-10	STRONG POST GUARDRAIL ATTACHED TO CULVERTS
630111	WEAK POST GUARDRAIL ATTACHED TO CULVERTS
630301-07	SHOULDER WIDENING FOR TYPE 1 (SPECIAL) GUARDRAIL TERMINALS
631011-10	TRAFFIC BARRIER TERMINAL, TYPE 2
631026-06	TRAFFIC BARRIER TERMINAL, TYPE 5
631031-15	TRAFFIC BARRIER TERMINAL, TYPE 6
643001-02	SAND MODULE IMPACT ATTENUATORS
664001-02	CHAIN LINK FENCE
665001-02	WOVEN WIRE FENCE
701001-02	OFF-ROAD OPERATIONS, 2L, 2W, MORE THAN 15' (4.5 M) AWAY
701006-05	OFF-ROAD OPERATIONS, 2L, 2W, 15' (4.5 M) TO 24" (600 MM) FROM PAVEMENT EDGE
701101-05	OFF-ROAD OPERATIONS, MULTILANE, 15' (4.5 M) TO 24" (600 MM) FROM PAVEMENT EDGE
701106-02	OFF-ROAD OPERATIONS, MULTILANE, MORE THAN 15' (4.5 M) AWAY
701201-04	LANE CLOSURE, 2L, 2W, DAY ONLY, FOR SPEEDS ≥ 45 MPH
701301-04	LANE CLOSURE, 2L, 2W, SHORT TIME OPERATIONS
701400-09	APPROACH TO LANE CLOSURE, FREEWAY/EXPRESSWAY
701406-11	LANE CLOSURE, FREEWAY/EXPRESSWAY, DAY OPERATIONS ONLY
701411-09	LANE CLOSURE, MULTILANE, AT ENTRANCE OR EXIT RAMP, FOR SPEEDS ≥ 45 MPH
701421-08	LANE CLOSURE, MULTILANE, DAY OPERATIONS ONLY, FOR SPEEDS ≥ 45 MPH TO 55 MPH
701422-09	LANE CLOSURE, MULTILANE, FOR SPEEDS ≥ 45 MPH TO 55 MPH
701426-09	LANE CLOSURE, MULTILANE, INTERMITTENT OR MOVING OPERATION, FOR SPEEDS ≥ 45 MPH
701427-05	LANE CLOSURE, MULTILANE, INTERMITTENT OR MOVING OPERATION, FOR SPEEDS ≤ 40 MPH
701428-01	TRAFFIC CONTROL SET UP AND REMOVAL FREEWAY/EXPRESSWAY
701456-04	PARTIAL EXIT RAMP CLOSURE FREEWAY/EXPRESSWAY
701501-06	URBAN LANE CLOSURE, 2L, 2W, UNDIVIDED
701502-07	URBAN LANE CLOSURE, 2L, 2W, WITH BIDIRECTIONAL LEFT TURN LANE
701601-09	URBAN LANE CLOSURE, MULTILANE, 1W OR 2W WITH NONTRAVERSABLE MEDIAN
701602-08	URBAN LANE CLOSURE, MULTILANE, 2W WITH BIDIRECTIONAL LEFT TURN LANE
701606-10	URBAN LANE CLOSURE, MULTILANE, 2W WITH MOUNTABLE MEDIAN
701701-10	URBAN LANE CLOSURE, MULTILANE INTERSECTION
701901-06	TRAFFIC CONTROL DEVICES
725001-01	OBJECT AND TERMINAL MARKERS
782006	GUARDRAIL AND BARRIER WALL REFLECTOR MOUNTING DETAILS

GENERAL NOTES

ALL DISTURBED AREAS CAUSED BY THE CONTRACTOR'S OPERATIONS SHALL BE GRADED AND SEEDED WITH CLASS 2 ROADSIDE MIXTURE AND FERTILIZED AS STATED IN SECTION 250 OF THE STANDARD SPECIFICATIONS. COST SHALL BE CONSIDERED INCLUDED IN THE UNIT COST OF THE WORK BEING PERFORMED.

REMOVAL OF DAMAGED IMPACT ATTENUATORS SHALL BE INCLUDED IN THE COST OF THE IMPACT ATTENUATOR BEING INSTALLED.

REMOVAL AND DISPOSAL OF DAMAGED FENCE SHALL BE INCLUDED IN THE COST OF THE FENCE BEING INSTALLED.

DISTRICT SIX	
EXAMINED	October 3, 20 16
<i>John C. Ryan</i> OPERATIONS ENGINEER	
EXAMINED	September 22, 20 16
<i>Ron A. Hambeau</i> PROJECT IMPLEMENTATION ENGINEER	
EXAMINED	September 27, 20 16
<i>Jeffrey P. Meyer</i> PROGRAM DEVELOPMENT ENGINEER	

CODE NO.	ITEM	UNIT	TOTAL QUANTITY	6-00664-0550	6-00664-9993
				100% STATE	100% MCHD
				ROADWAY	ROADWAY
				0021	0021
				RURAL	RURAL
63000001	STEEL PLATE BEAM GUARDRAIL, TYPE A, 6 FOOT POSTS	FOOT	350	150	200
63000003	STEEL PLATE BEAM GUARDRAIL, TYPE A, 9 FOOT POSTS	FOOT	250	125	125
63000030	STRONG-POST GUARDRAIL ATTACHED TO CULVERTS	FOOT	50	50	
63000031	WEAK-POST GUARDRAIL ATTACHED TO CULVERTS	FOOT	50	50	
63100045	TRAFFIC BARRIER TERMINAL, TYPE 2	EACH	2		2
63100070	TRAFFIC BARRIER TERMINAL, TYPE 5	EACH	2		2
63100085	TRAFFIC BARRIER TERMINAL, TYPE 6	EACH	2		2
63100167	TRAFFIC BARRIER TERMINAL, TYPE 1 (SPECIAL) TANGENT	EACH	20	5	15
63100169	TRAFFIC BARRIER TERMINAL, TYPE 1 (SPECIAL) FLARED	EACH	2		2
63200310	GUARDRAIL REMOVAL	FOOT	750	500	250
64300450	IMPACT ATTENUATORS (NON-REDIRECTIVE), TEST LEVEL 3	EACH	2	1	1
64401300	HIGH TENSION CABLE MEDIAN BARRIER TERMINALS	EACH	2	1	1
66400105	CHAIN LINK FENCE, 4'	FOOT	315	165	150
66500105	WOVEN WIRE FENCE, 4'	FOOT	220	80	140

FILE NAME *	USER NAME * Varankhfo	DESIGNED -	REVISED -
pc:\j\884EB\INTEG\illinois.gov\FWIDOT\Documents\IDOT Offices\District 6\Projects\0672\0672-0000\0672-0000-0000.dwg		CHECKED - JWC	REVISED -
Default	PLDT DATE = 10/19/2016	DATE -	REVISED -

**STATE OF ILLINOIS
DEPARTMENT OF TRANSPORTATION**

SUMMARY OF QUANTITIES			
SCALE:	SHEET 1	OF 3 SHEETS	STA. TO STA.

F.A.* RTE.	SECTION	COUNTY	TOTAL SHEETS	SHEET NO.
*VAR	**	VARIOUS	17	3
CONTRACT NO. 72J52				
ILLINOIS FED. AID PROJECT				

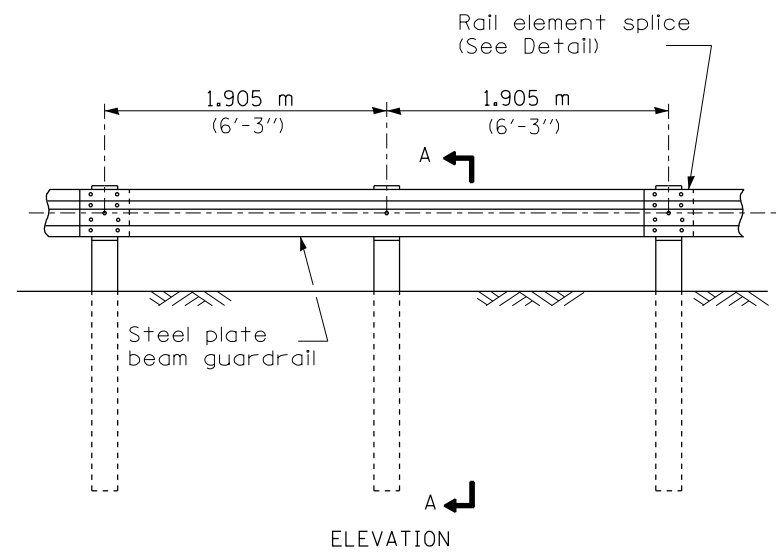
**06 CABLE/GUARDRAIL 2017-2

CODE NO.	ITEM	UNIT	TOTAL QUANTITY	6-00664-0550	6-00664-9993
				100% STATE	100% MCHD
				ROADWAY	ROADWAY
				0021 RURAL	0021 RURAL
67100100	MOBILIZATION	LSUM	1	0.4	0.6
70100420	TRAFFIC CONTROL AND PROTECTION, STANDARD 701411	EACH	2	1	1
72501000	TERMINAL MARKER - DIRECT APPLIED	EACH	200	100	100
78200005	GUARDRAIL REFLECTORS, TYPE A	EACH	40	14	26
Z0008759	CALL OUT	EACH	18	10	8
Z0008760	EMERGENCY WORK CALL OUT	EACH	28	10	18
Z0052000	REPAIR STEEL PLATE BEAM GUARDRAIL, TYPE A	FOOT	505	325	180
Z0052410	REPAIR TRAFFIC BARRIER TERMINAL, TYPE 1 SPECIAL (TANGENT)	EACH	34	14	20
Z0052415	REPAIR TRAFFIC BARRIER TERMINAL, TYPE 1 SPECIAL (FLARED)	EACH	2		2
Z0052600	REPAIR TRAFFIC BARRIER TERMINAL, TYPE 2	EACH	1		1
Z0053000	REPAIR TRAFFIC BARRIER TERMINAL, TYPE 5	EACH	2		2
X0325231	CABLE GUARD MARKER	EACH	260	86	174
X0325899	REPAIR HIGH TENSION CABLE (GIBRALTAR)	FOOT	650	216	434
X0325900	REPAIR HIGH TENSION BARRIER TERMINAL (GIBRALTAR)	EACH	4	1	3

2018 12 13

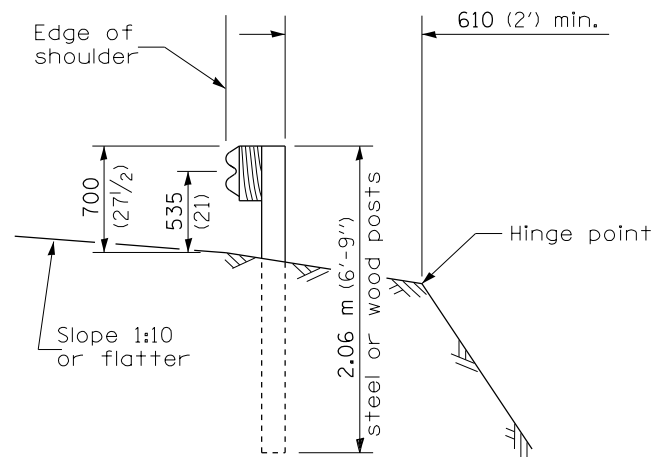
CODE NO.	ITEM	UNIT	TOTAL QUANTITY	6-00664-0550	6-00664-9993
				100% STATE	100% MCHD
				ROADWAY 0021	ROADWAY 0021
				RURAL	RURAL
X0325901	REPAIR POSTS (GIBRALTAR)	EACH	48	43	5
X0325902	REMOVE AND REPLACE POSTS (GIBRALTAR)	EACH	38	33	5
X0327490	REPAIR HIGH TENSION CABLE (NU-CABLE)	FOOT	150	50	100
X0327491	REPAIR POSTS (NU-CABLE)	EACH	32	10	22
X0327492	REMOVE AND REPLACE POSTS (NU-CABLE)	EACH	60	20	40
X0327493	REPAIR HIGH TENSION BARRIER TERMINAL (NU-CABLE)	EACH	4	1	3
X6431220	REMOVE AND REPLACE IMPACT ATTENUATOR SAND MODULE	EACH	20	6	14
X7011834	TRAFFIC CONTROL AND PROTECTION, CALL OUT WORK	EACH	20	6	14
X7011836	TRAFFIC CONTROL AND PROTECTION, FREEWAY/EXPRESSWAY, CALL OUT WORK	EACH	30	10	20

9

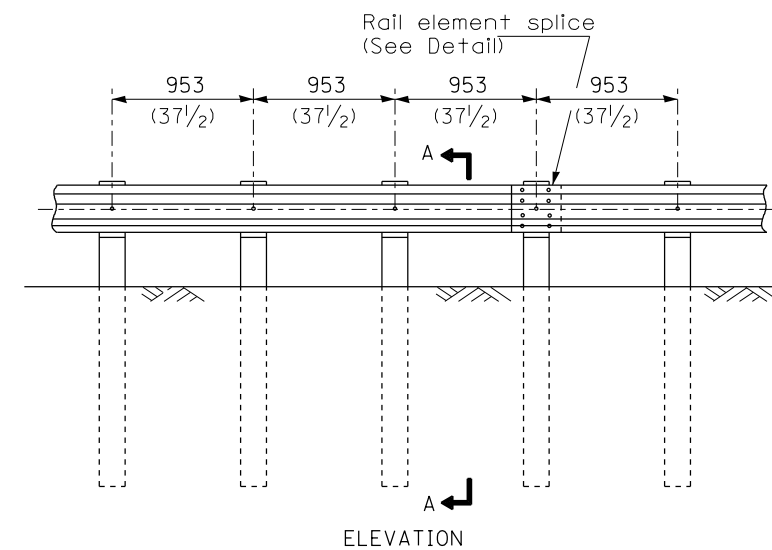


TYPE A

1.905 m (6'-3") Typical post spacing

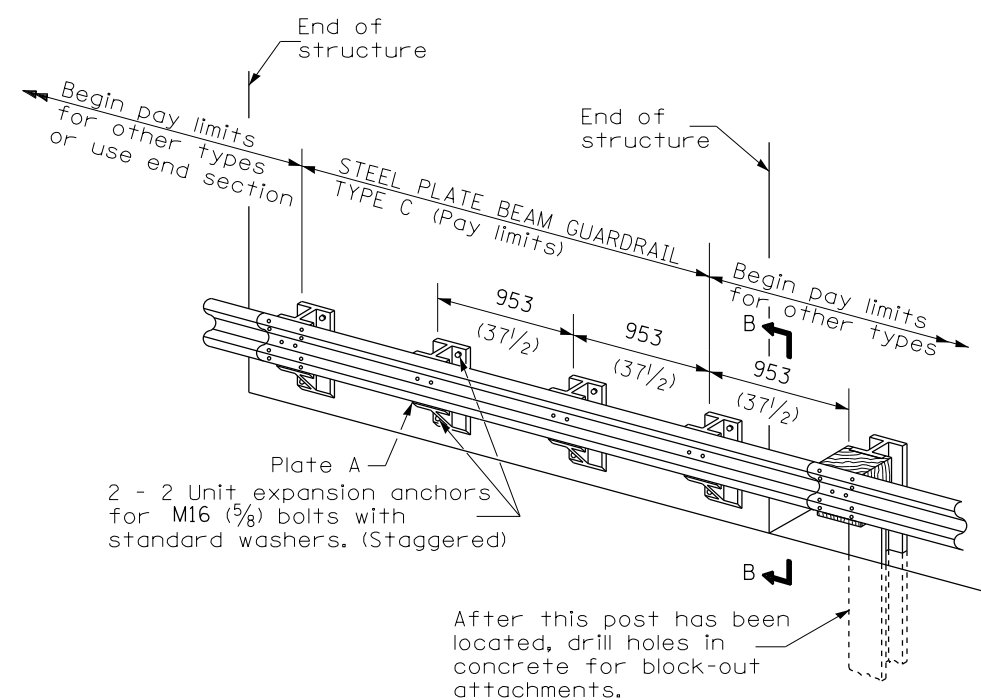


SECTION A-A



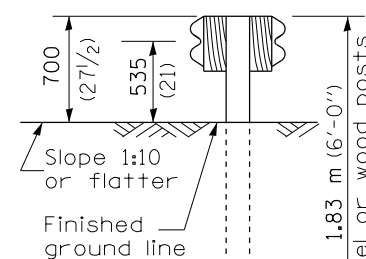
TYPE B

953 (37 1/2) Closed post spacing

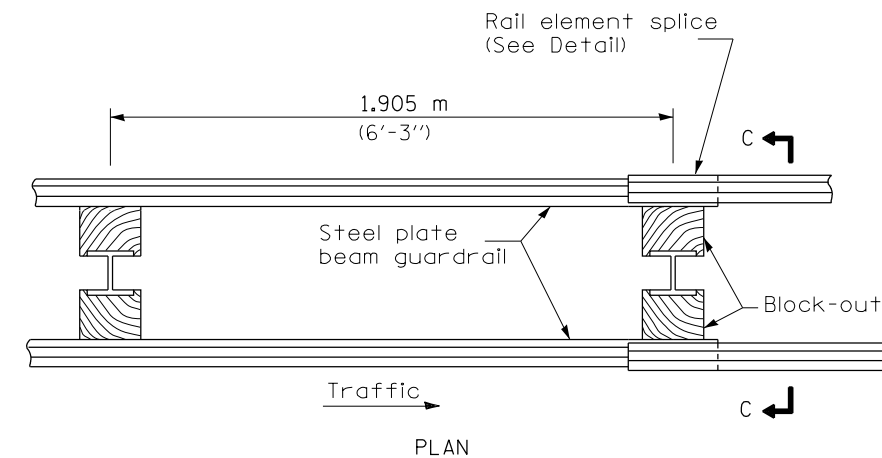


TYPE C

953 (37 1/2) Block-out spacing

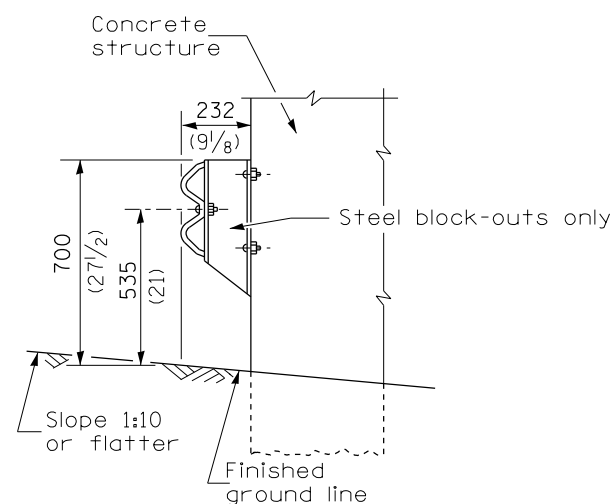


SECTION C-C



TYPE D

Double steel plate beam guardrail
1.905 m (6'-3") typical post spacing



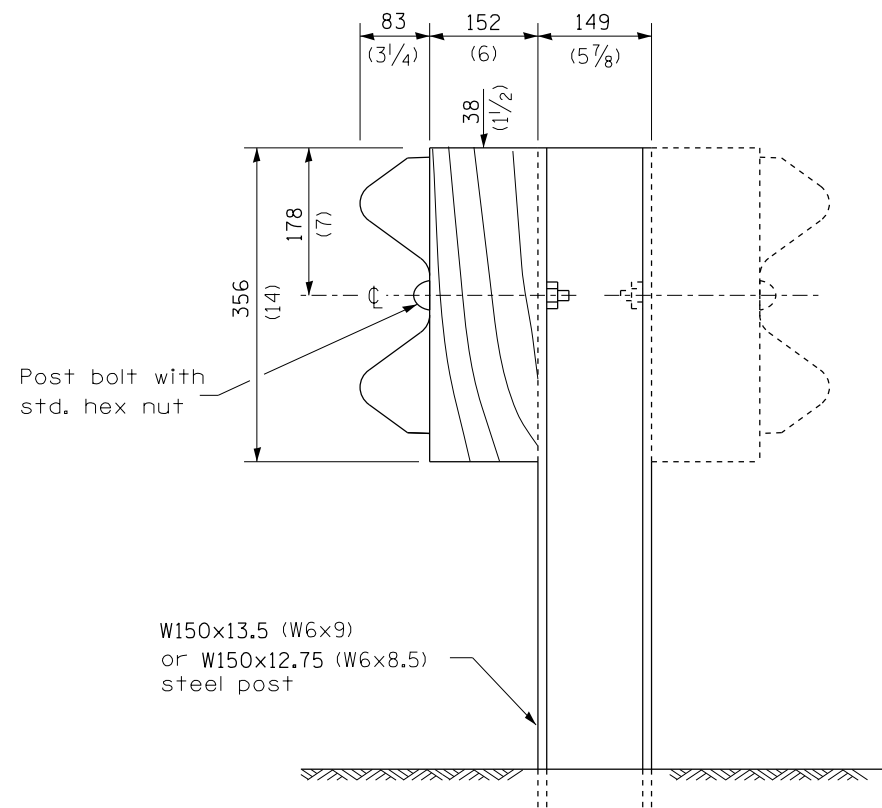
SECTION B-B

GENERAL NOTES

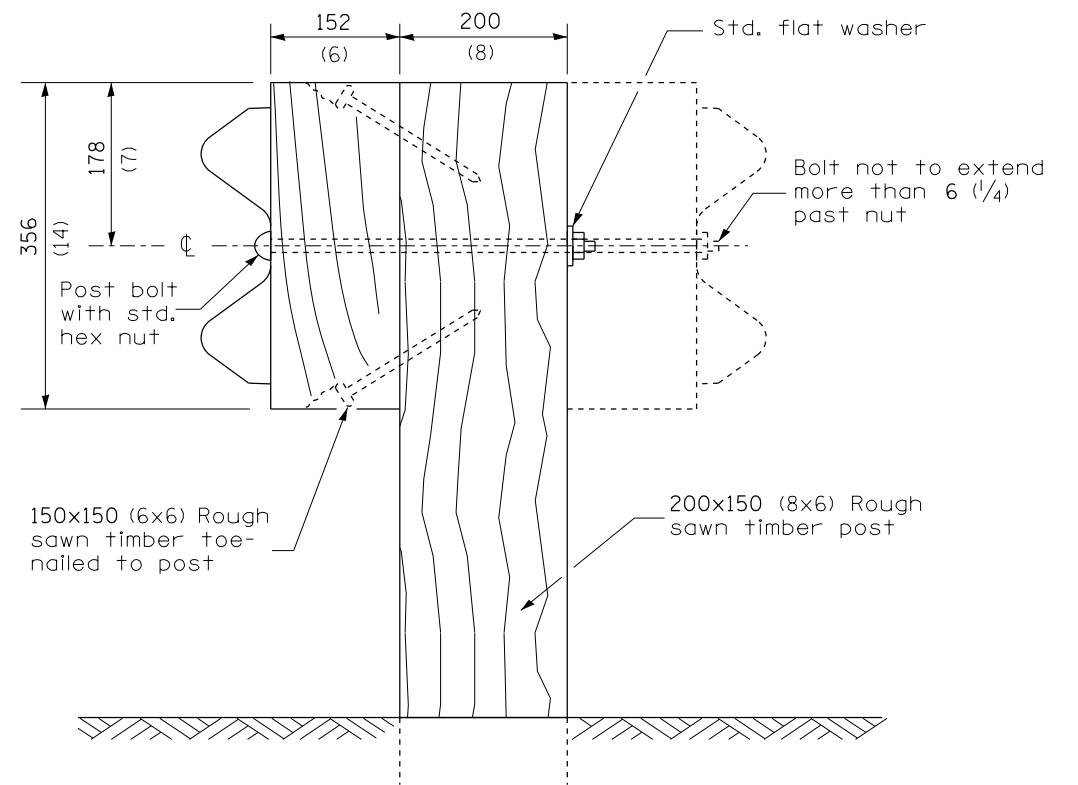
All slope ratios are expressed as units of vertical displacement to units of horizontal displacement (V:H).

All dimensions are in millimeters (inches) unless otherwise shown.

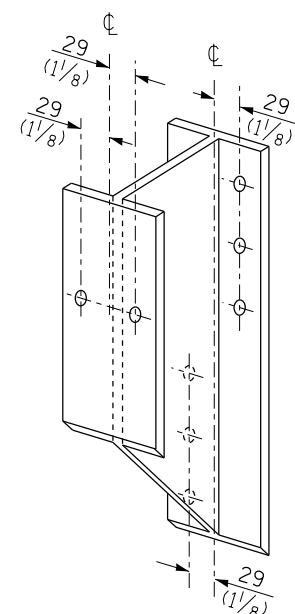
FILE NAME =	USER NAME = Verenskif	DESIGNED -	REVISED -	STATE OF ILLINOIS DEPARTMENT OF TRANSPORTATION	PRE-MGS HIGHWAY STANDARD 630001-06 STEEL PLATE BEAM GUARDRAIL EFFECTIVE 4-1-06	F.A. RTE.	SECTION	COUNTY	TOTAL SHEETS	SHEET NO.	
pw:\IL\084EBIDINTEG\illinois.gov\PIWIDOT\Documents\DOT Offices\District 6\Projects\0672\Drawings\630001\630001-06\630001-06-01.dwg	PLLOT SCALE = 26.0000' / in.	CHECKED -	REVISED -			•VAR	**	VARIOUS	17	6	
Default	PLLOT DATE = 10/18/2016	DATE -	REVISED -			CONTRACT NO. 72J52					
						ILLINOIS FED. AID PROJECT **D6 CABLE/GUARDRAIL 2017-2					



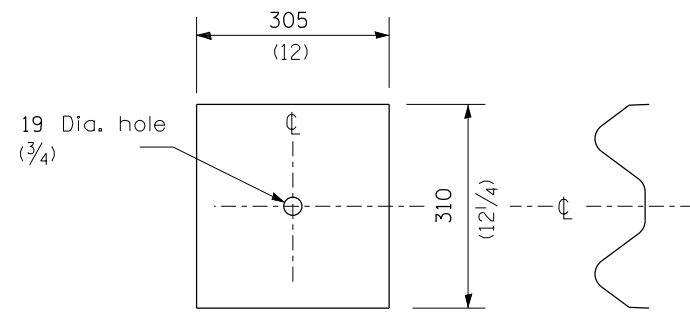
STEEL POST CONSTRUCTION



WOOD POST CONSTRUCTION



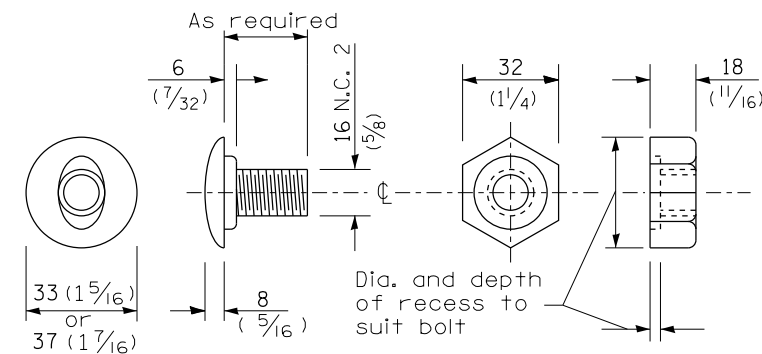
STEEL BLOCK-OUT DETAIL



NOTE

Plate A shall be placed between rail element and block-out at non-splice mounting points only when steel block-outs are used.

PLATE A



POST OR SPLICE BOLT & NUT

FILE NAME =	USER NAME = Verenskif	DESIGNED -	REVISED -
pw:\IL\084EBIDINTEG.illinois.gov\PIWIDOT\Documents\DOT Offices\District 6\Projects\0672\Drawings\60\Sheets\0672J52-sht-630001-REVISED STB.dgn			
Default	PLOT SCALE = 26.0000' / in.	CHECKED -	REVISED -
	DATE = 10/18/2016	DATE -	REVISED -

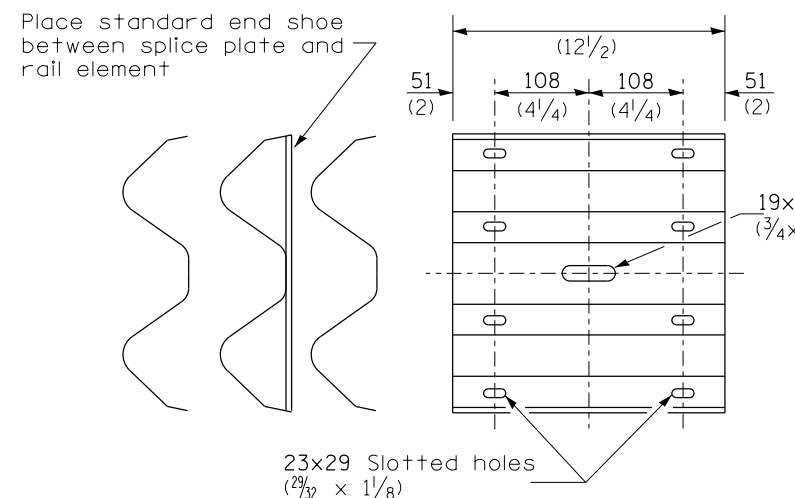
**STATE OF ILLINOIS
DEPARTMENT OF TRANSPORTATION**

**PRE-MGS HIGHWAY STANDARD 630001-06
STEEL PLATE BEAM GUARDRAIL EFFECTIVE 4-1-06**

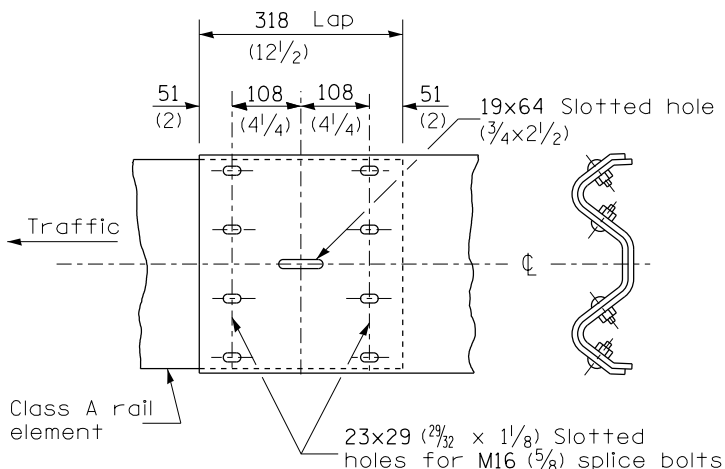
SCALE: SHEET 2 OF 4 SHEETS STA. TO STA.

F.A. RTE.	SECTION	COUNTY	TOTAL SHEETS	SHEET NO.
	**	VARIOUS	17	7
			CONTRACT NO. 72J52	

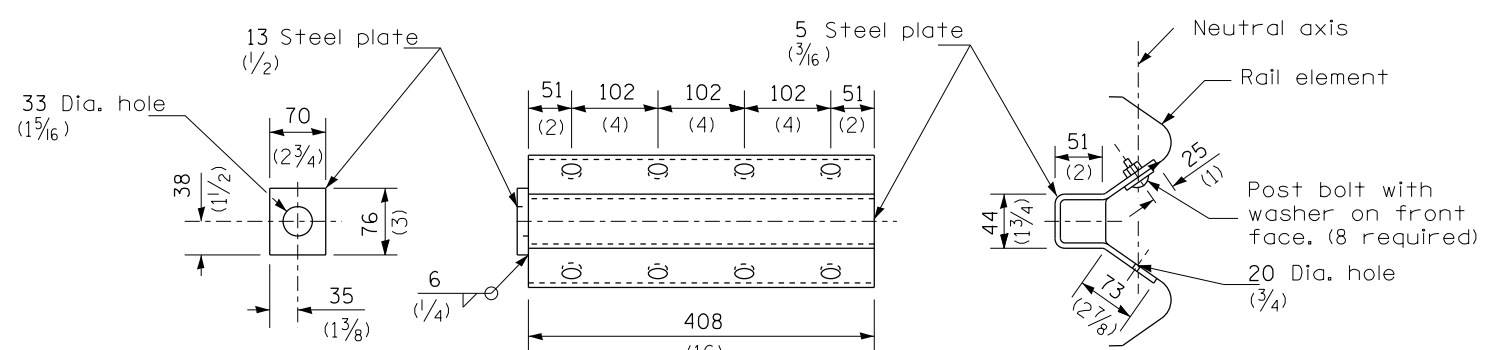
ILLINOIS FED. AID PROJECT
**06 CABLE/GUARDRAIL 2017-2



SPLICE PLATE



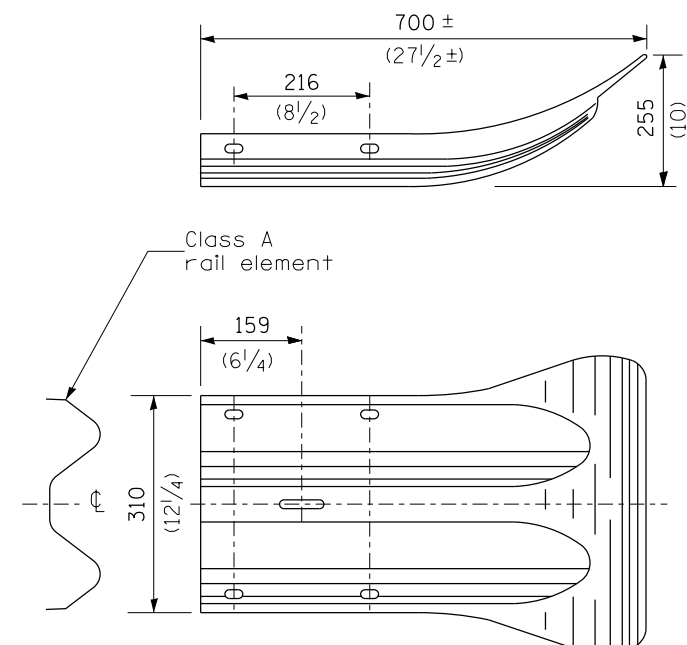
RAIL ELEMENT SPLICE



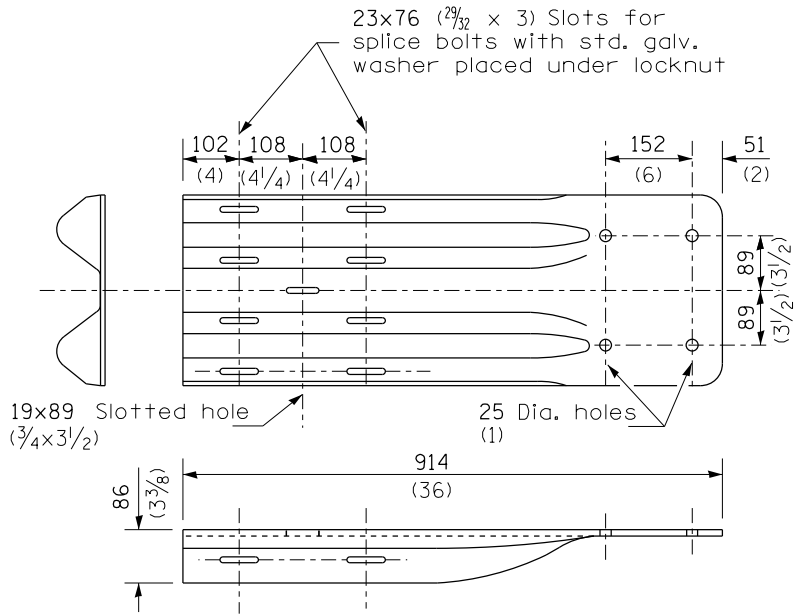
NOTE

Anchor plate T shall be used to attach cable assembly to guardrail when required on traffic barrier terminals.

ANCHOR PLATE T DETAILS



END SECTION



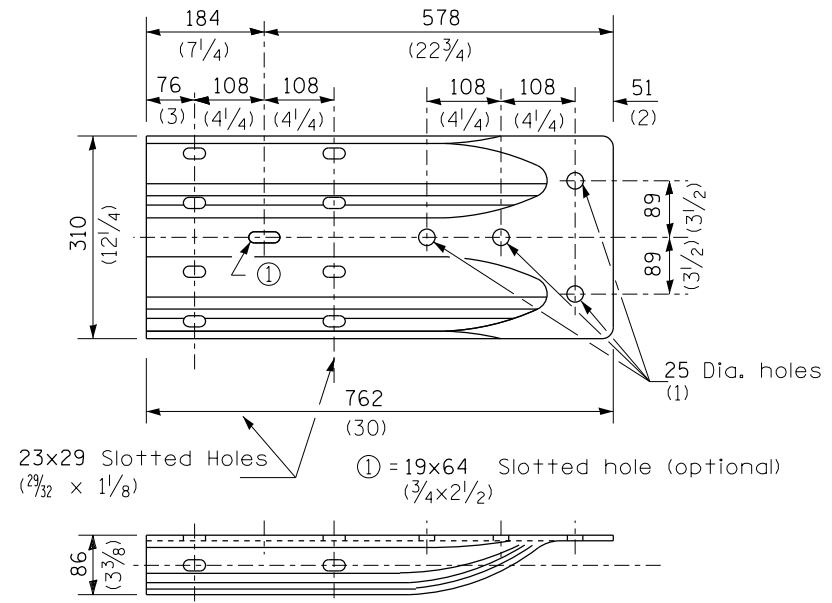
NOTE

When end shoe is attached to a bridge parapet which has an expansion joint, the bolts shall be provided with a locknut or double nut and shall be tightened only to a point that will allow guardrail movement.

The standard end shoe shall be attached to the concrete with pre-drilled or self-drilling anchor bolts. The anchor cone shall be set flush with the surface of the concrete.

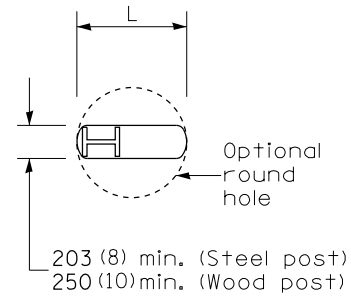
Externally threaded studs protruding from the surface of the concrete will not be permitted.

END SHOE

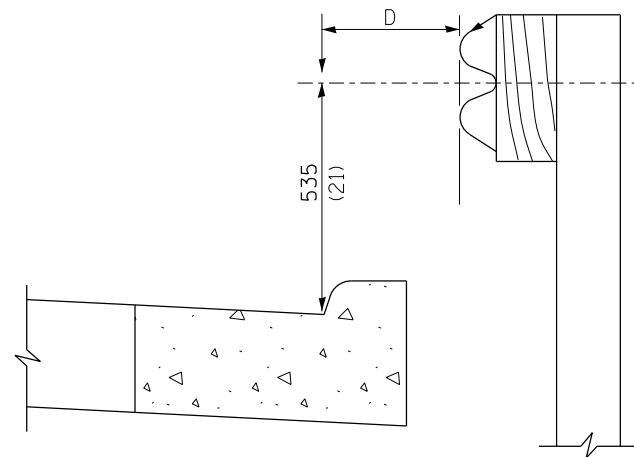


ALTERNATE END SHOE

FILE NAME =	USER NAME = Verenski fa	DESIGNED -	REVISED -	STATE OF ILLINOIS DEPARTMENT OF TRANSPORTATION	PRE-MGS HIGHWAY STANDARD 630001-06 STEEL PLATE BEAM GUARDRAIL EFFECTIVE 4-1-06	F.A. RTE.	SECTION	COUNTY	TOTAL SHEETS	SHEET NO.
pw:\ILL084EBIDINTEG.illinois.gov\PWIDOT\Documents\DOT Offices\District 6\Projects\D672J52-sht-630001-06.dwg		DRAWN -	REVISED -			VAR	**	VARIOUS	17	8
PLOT SCALE = 26.0000 / in.		CHECKED -	REVISED -			CONTRACT NO. 72J52				
Default		DATE -	REVISED -			ILLINOIS FED. AID PROJECT				



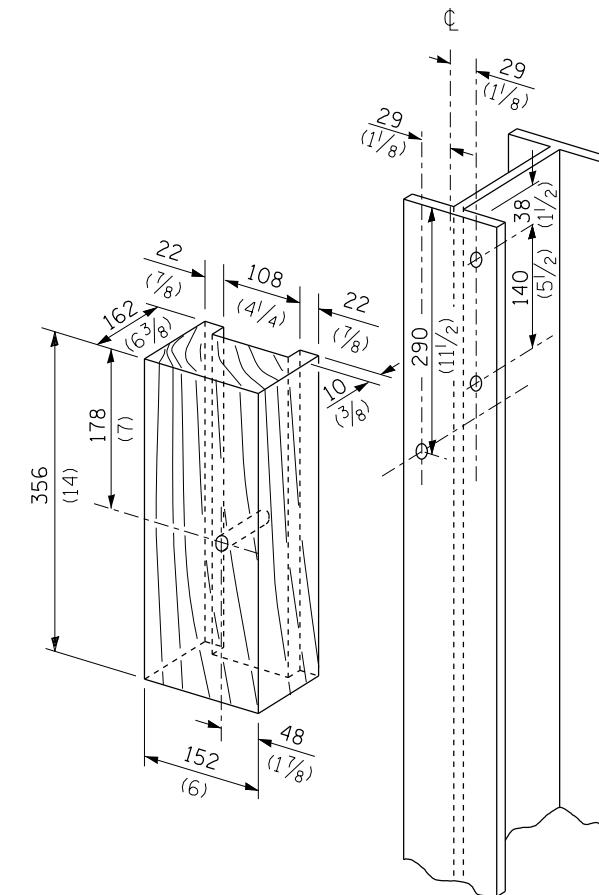
PLAN



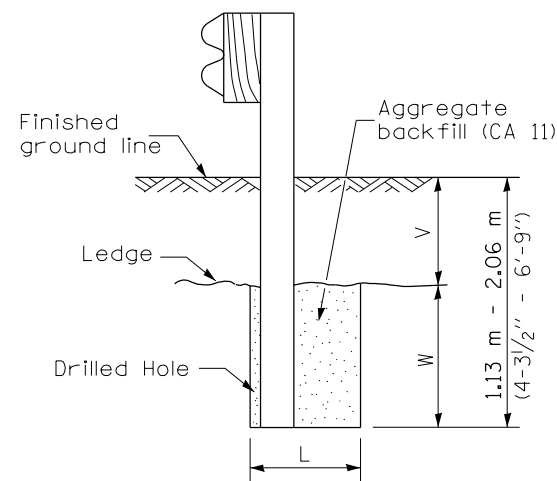
Note:
If it is necessary for D to be more than 300 (12) and less than 3.0 m (10'-0") type M-5 (M-2) curb and gutter (Std. 606001) shall be used in front of and in advance of the guardrail.

GUARDRAIL PLACED BEHIND CURB

(D = 0 desirable to 300 (12) maximum)



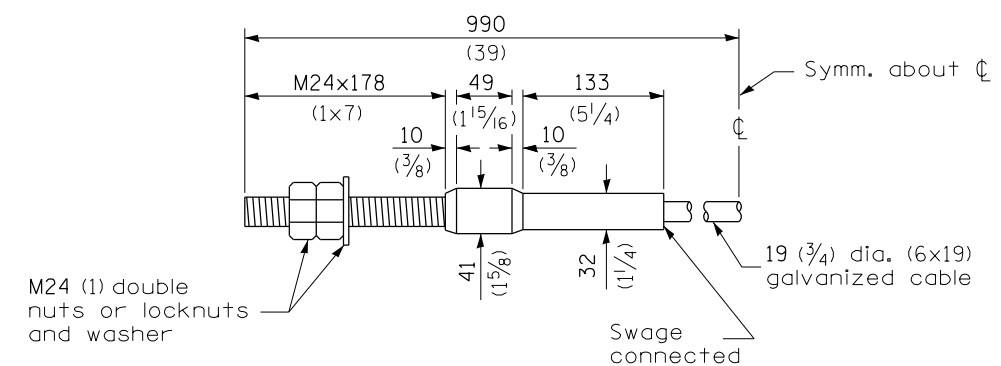
WOOD BLOCK-OUT AND STEEL POST DETAILS



Note:
Ledge line is top of rock ledge or hard slag fill.

ELEVATION

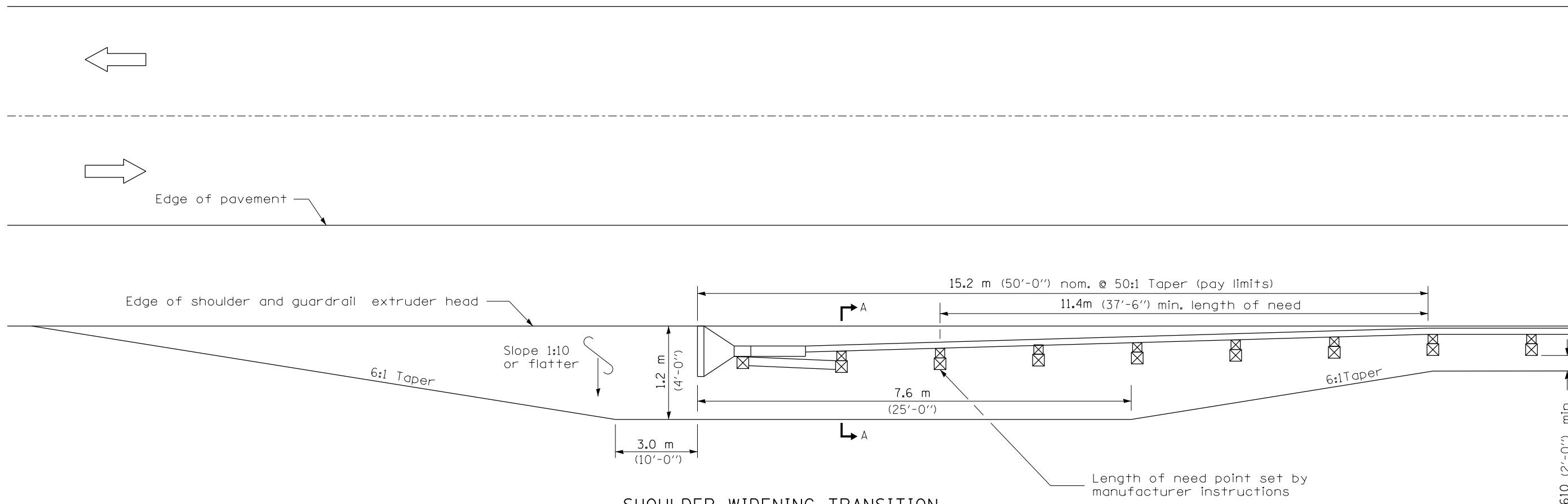
V	W	L	
		Steel Post	Wood Post
0 - 460 (0 - 18)	610 (24)	530 (21)	580 (23)
>460 - 825 (>18 - 41.5)	305 (12)	203 (8)	250 (10)
>825 - 1.13 m (>41.5 - 53.5)	305 - 0 (12 - 0)	203 (8)	250 (10)



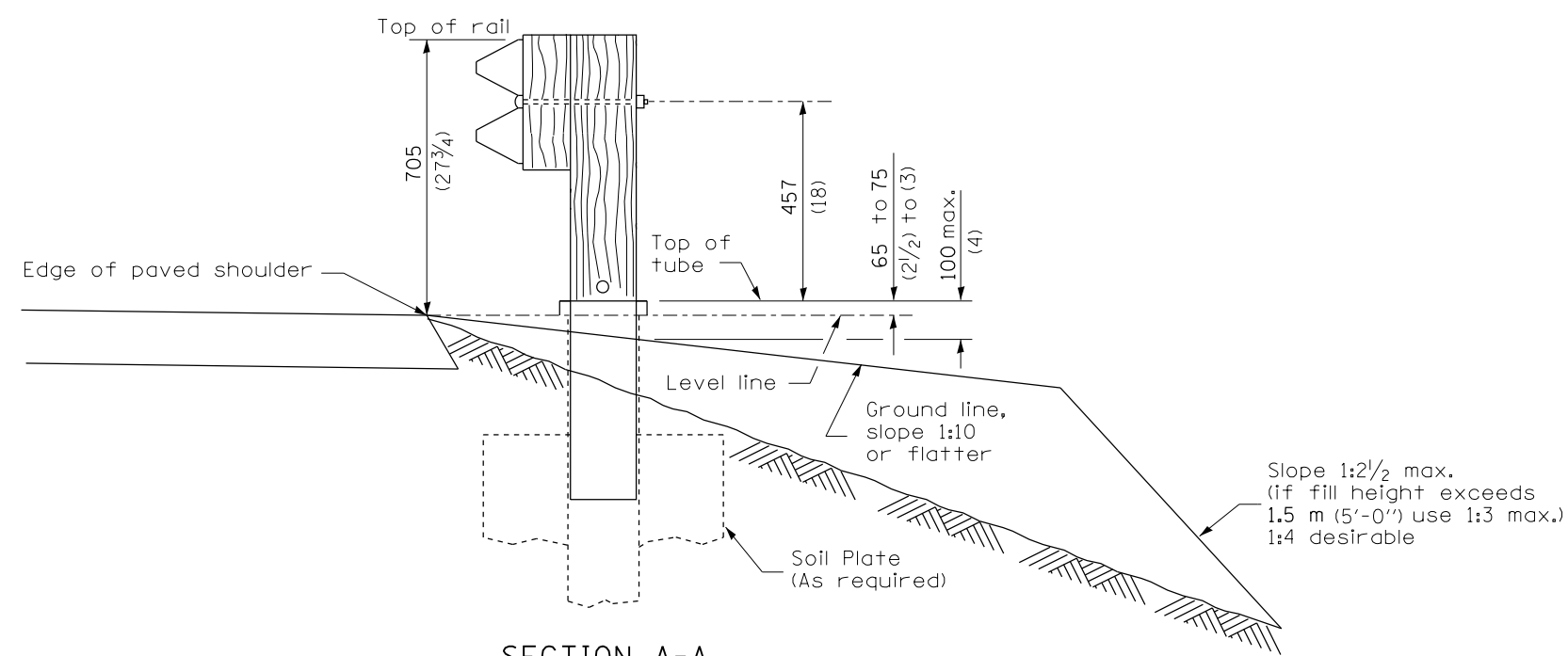
CABLE ASSEMBLY

(18,100 kg (40,000 lbs.) min. breaking strength)
Tighten to taut tension.

FOOTING FOR POST WHEN IMPERVIOUS MATERIAL IS ENCOUNTERED



**SHOULDER WIDENING TRANSITION
FOR TANGENT TERMINAL**



SECTION A-A

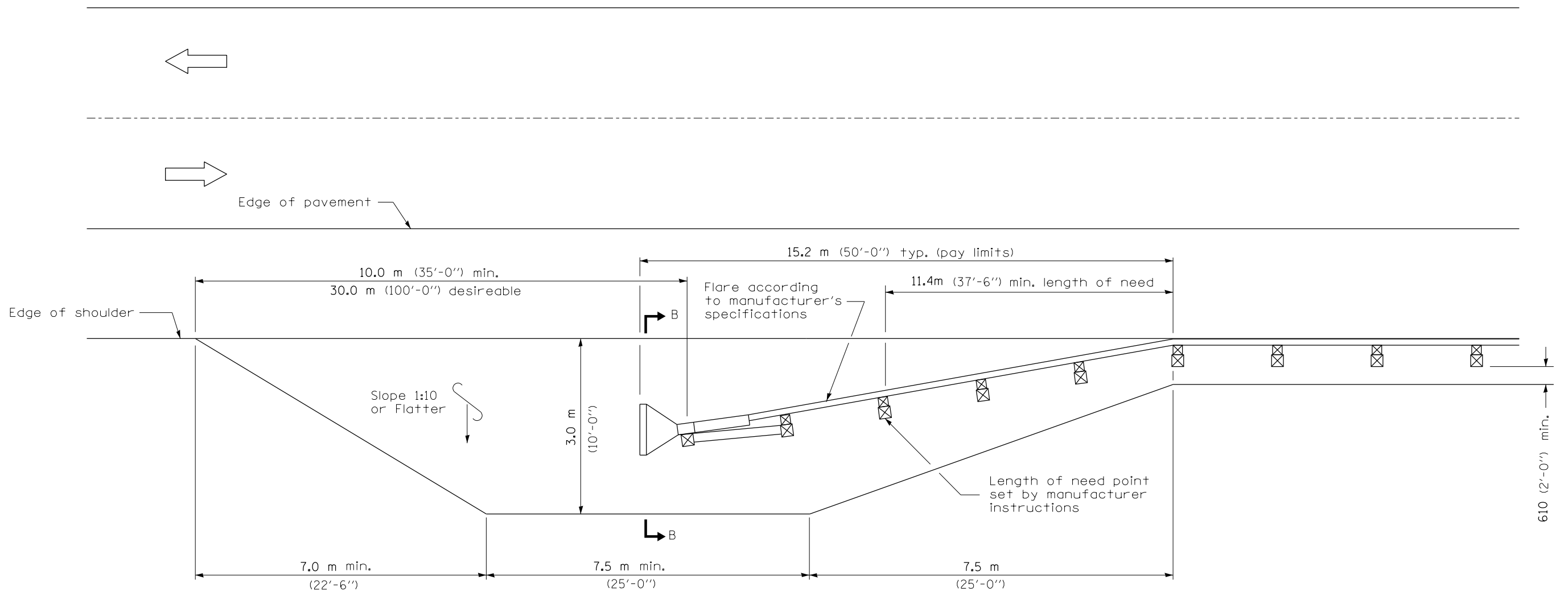
GENERAL NOTES

50:1 Taper required so the guardrail head will not encroach on the shoulder.

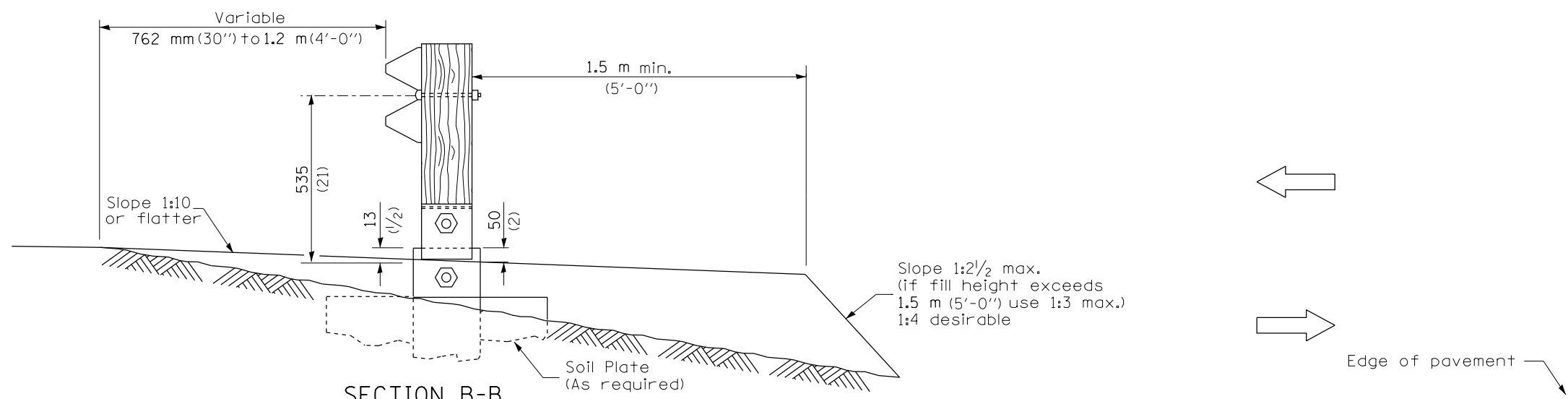
All slope ratios are expressed as units of vertical displacement to units of horizontal displacement (V:H).

All dimensions are in millimeters (inches) unless otherwise shown.

FILE NAME =	USER NAME = Verenskifa	DESIGNED -	REVISED -	STATE OF ILLINOIS DEPARTMENT OF TRANSPORTATION	PRE-MGS HIGHWAY STANDARD 630301-03 SHOULDER WID. FOR TYPE 1 (SPL) GUARDRAIL TERMINAL EFFECTIVE 4-1-06	F.A. RTE.	SECTION	COUNTY	TOTAL SHEETS	SHEET NO.	
pw:\IL\084EBIDINTEG.illinois.gov\PIWIDOT\Documents\DOT Offices\District 6\Projects\D672J52\Drawings\630301-GR_TERM.dgn	PLotted SCALE = 26.0000' / in.	CHECKED -	REVISED -			VAR	**	VARIOUS	17	10	
Default	PLOT DATE = 10/18/2016	DATE -	REVISED -			CONTRACT NO. 72J52					
						ILLINOIS FED. AID PROJECT **D6 CABLE/GUARDRAIL 2017-2					



**SHOULDER WIDENING TRANSITION
FOR FLARED TERMINAL**



SECTION B-B
(End section omitted for clarity.)

FILE NAME =	USER NAME = Verenskifa	DESIGNED -	REVISED -
pw:\11\084EBIDINTEG.illinois.gov\PIDOT\Documents\IDOT Offices\District 6\Projects\0672\BROWNDATA\6A0sheets\0672J52-sht-630301-REVISED-WID-GR_TERM.dgn		CHECKED -	REVISED -
Default	PLOT DATE = 10/18/2016	DATE -	REVISED -

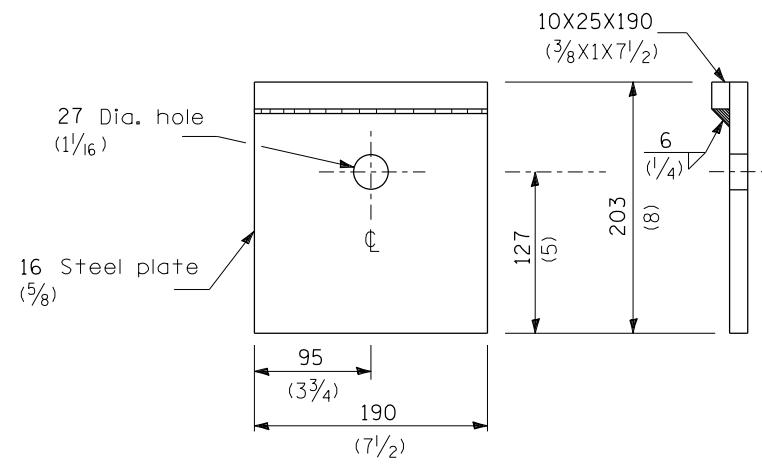
**STATE OF ILLINOIS
DEPARTMENT OF TRANSPORTATION**

**PRE-MGS HIGHWAY STANDARD 630301-03
SHOULDER WID. FOR TYPE 1 (SPL) GUARDRAIL TERMINAL
EFFECTIVE 4-1-06**

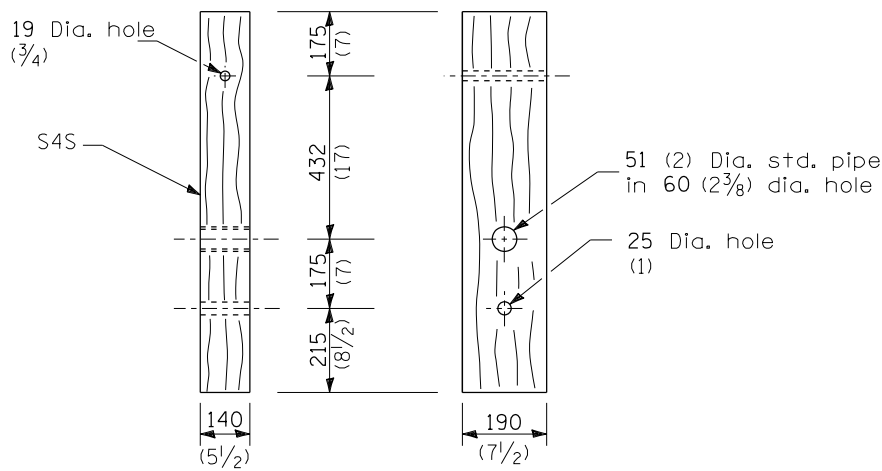
SCALE: SHEET 2 OF 2 SHEETS STA. TO STA.

F.A. RTE.	SECTION	COUNTY	TOTAL SHEETS	SHEET NO.
•VAR	••	VARIOUS	17	11
				CONTRACT NO. 72J52

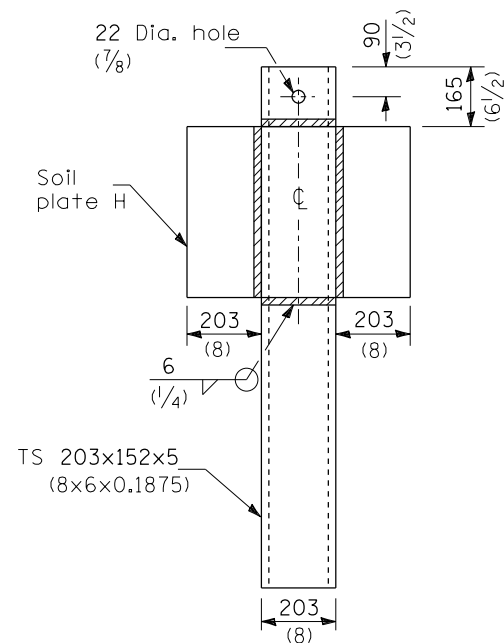
ILLINOIS FED. AID PROJECT
••06 CABLE/GUARDRAIL 2017-2



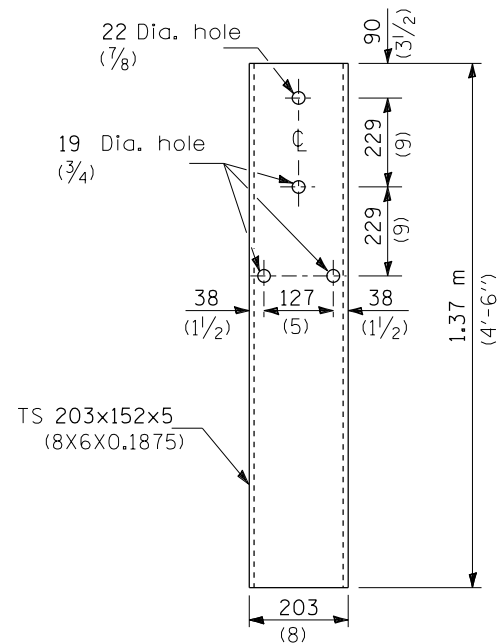
BEARING PLATE K



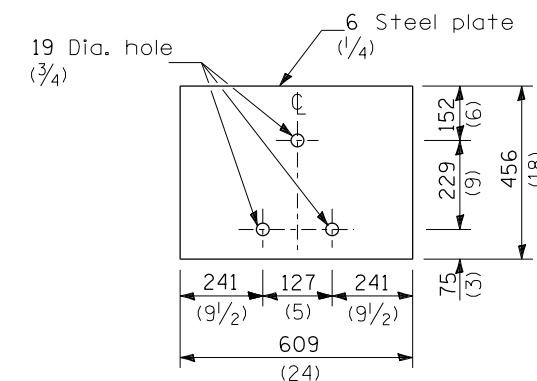
WOOD POST



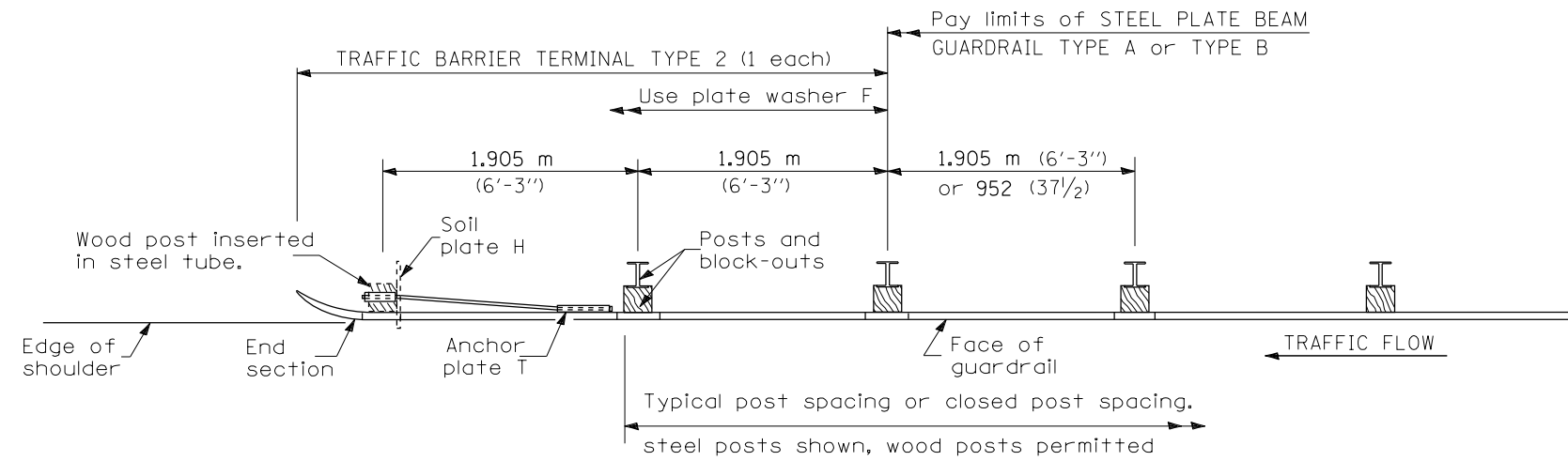
ALTERNATE SOIL PLATE CONNECTION



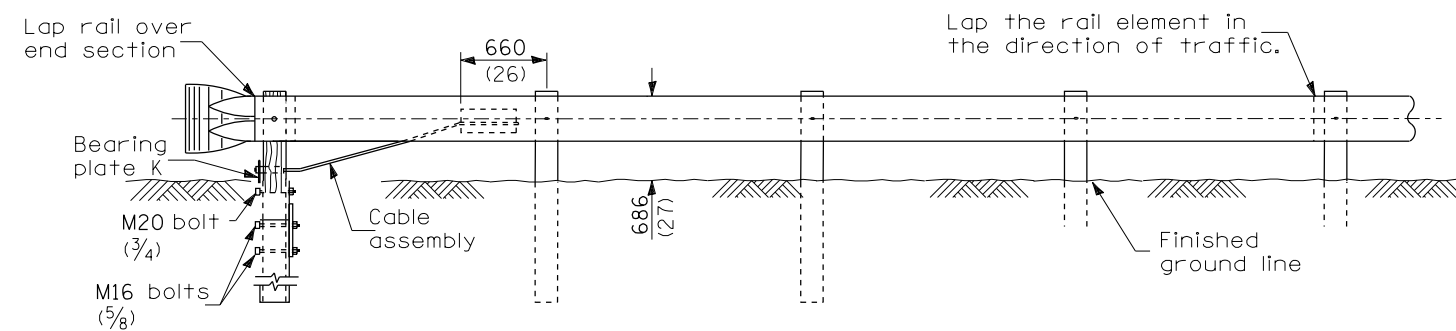
STEEL TUBE



SOIL PLATE H



PLAN



ELEVATION

GENERAL NOTES

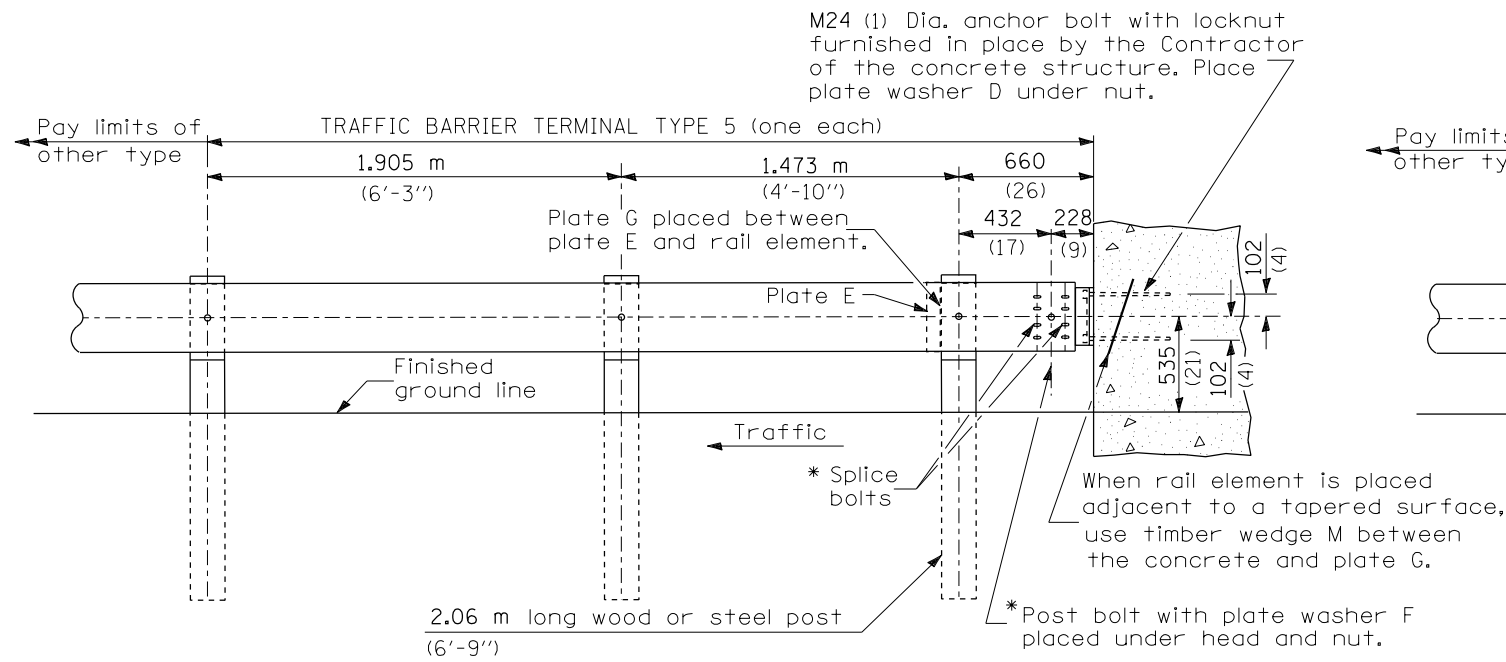
See Standard 630001 for details of guardrail not shown.

Use plate washer F at all posts.

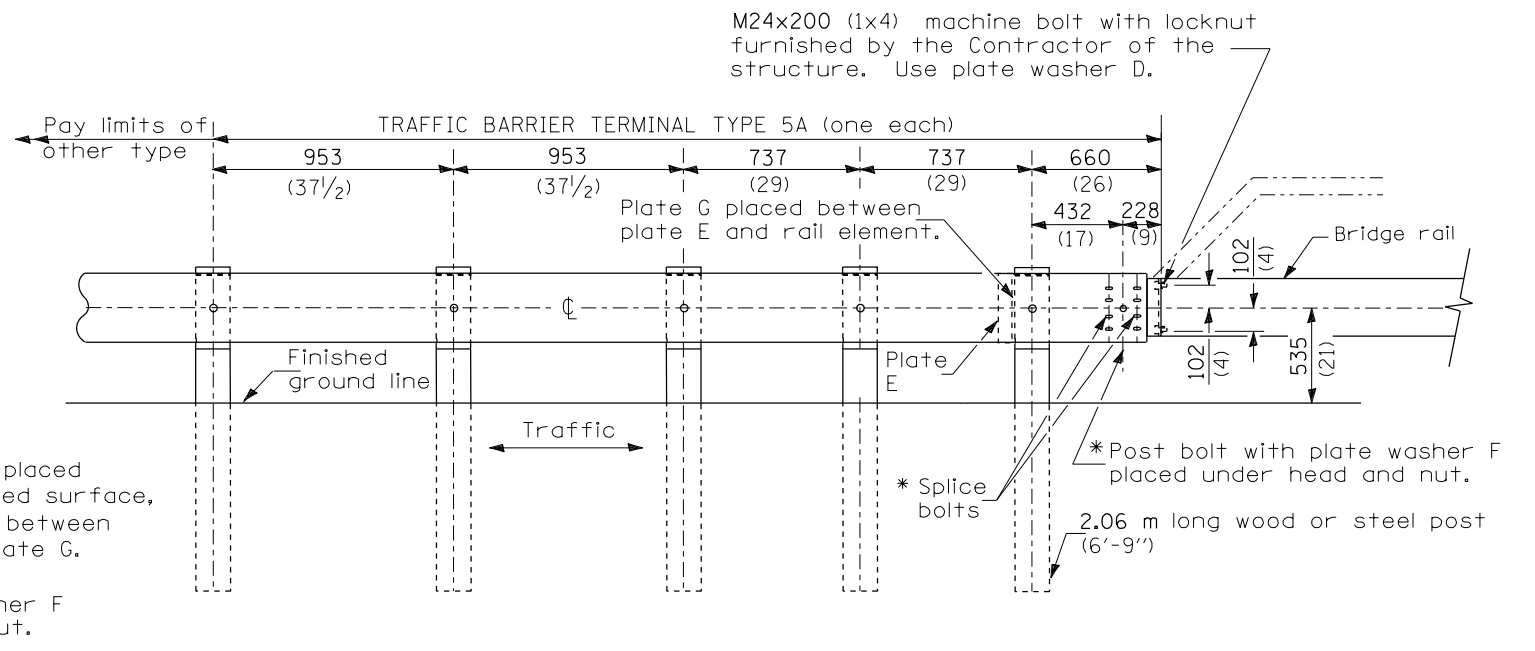
The bearing plate K shall be held in position by (2) two eight penny nails driven into the post and bent over the top of the plate.

All dimensions are in millimeters (inches) unless otherwise shown.

FILE NAME =	USER NAME = Verenskif	DESIGNED -	REVISED -	STATE OF ILLINOIS DEPARTMENT OF TRANSPORTATION	PRE-MSG HIGHWAY SYANDARD 631011-02 TRAFFIC BARRIER TERMINAL, TYPE 2 EFFECTIVE 4-1-06	F.A. RTE.	SECTION	COUNTY	TOTAL SHEETS	SHEET NO.
Default	PLOT DATE = 10/18/2016	CHECKED -	REVISED -			•VAR	**	VARIOUS	17	12
		DATE -	REVISED -			CONTRACT NO. 72J52				



TYPE 5 - CONCRETE BRIDGE PARAPET



TYPE 5A - STEEL BRIDGE RAIL

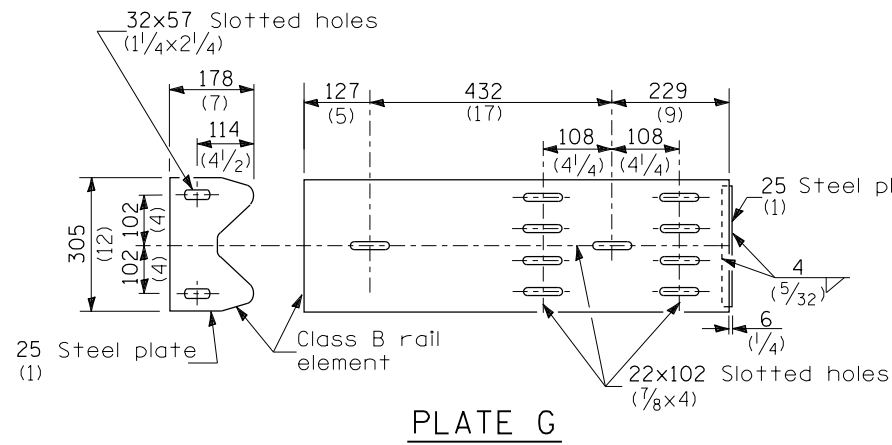


PLATE G

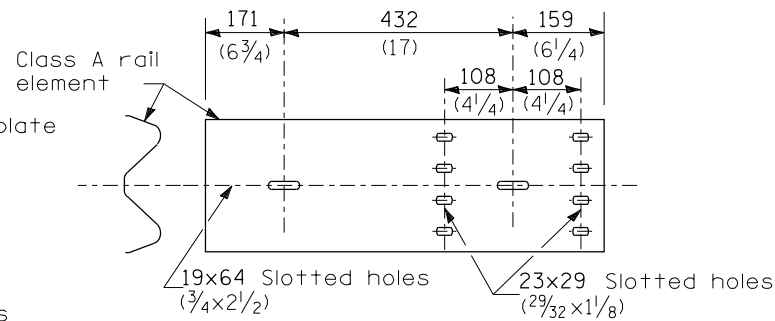
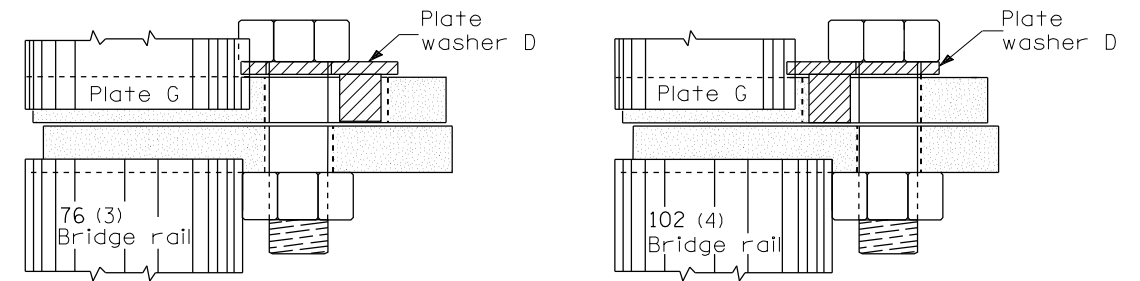


PLATE E



PLACEMENT OF PLATE WASHER D

(PLAN)

GENERAL NOTES

Install plate washer D so that the 25 mm (1") projection fills the remainder of the slotted holes in the 25 mm (1") end plate on plate G after the M24 (1") dia. bolts are in place.

* Bolts shall be provided with locknut or double nut and shall be tightened only to a point that will allow plate G to be free to move when an expansion joint exists below the connector.

See Standard 630001 for details of guardrail not shown.

All dimensions are in millimeters (inches) unless otherwise shown.

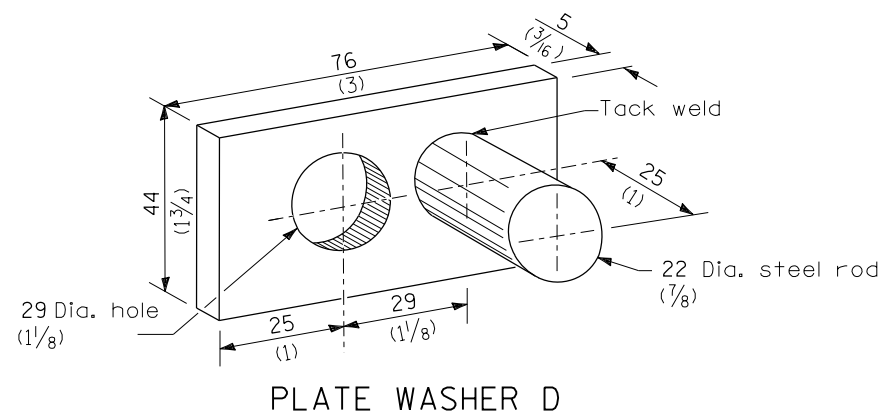
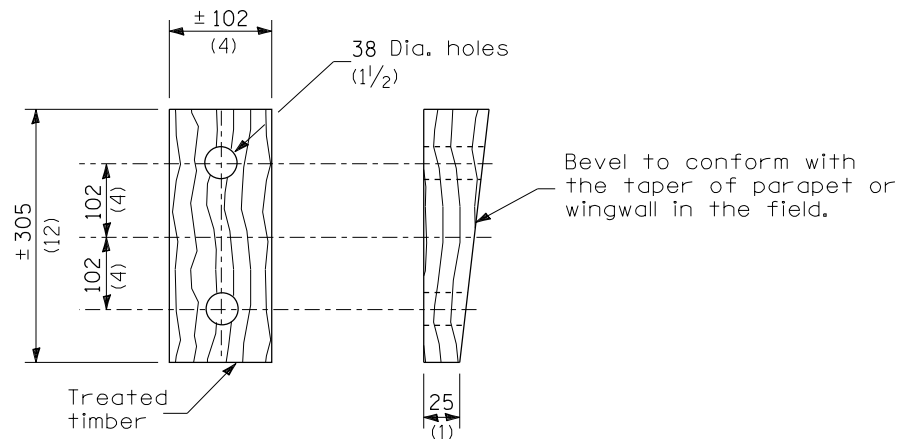
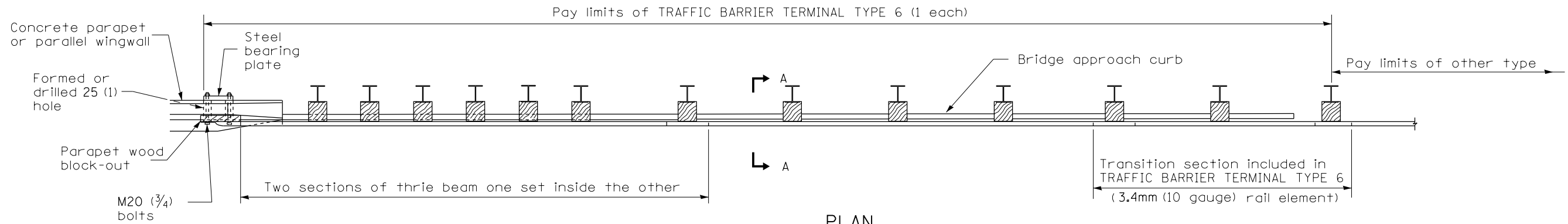


PLATE WASHER D

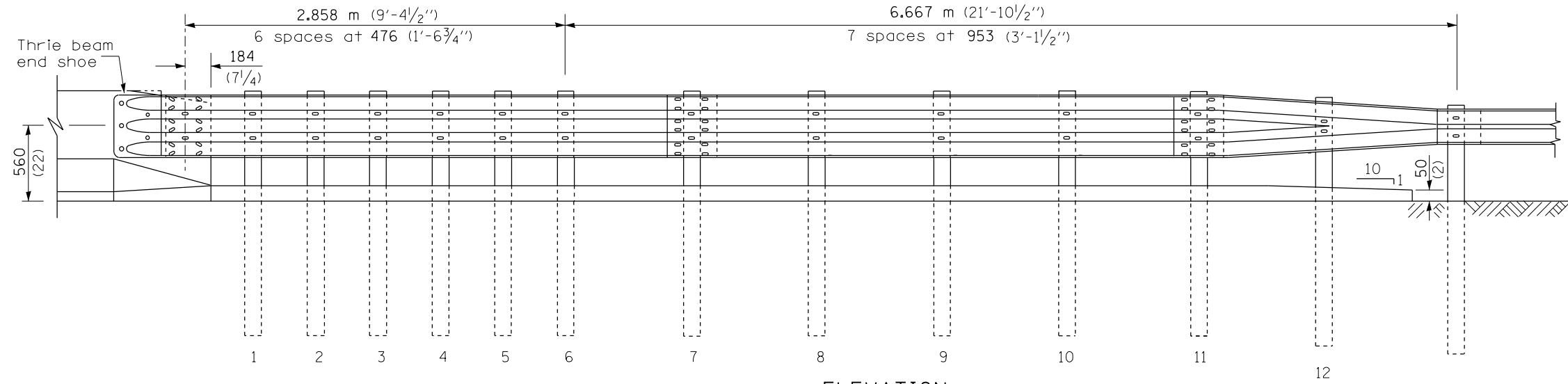


WEDGE M

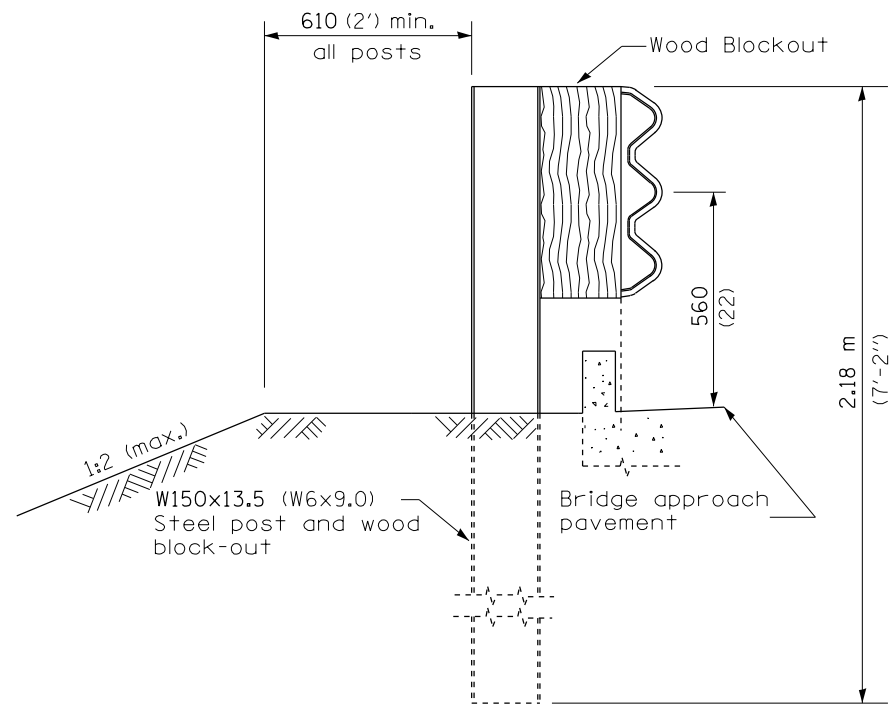
FILE NAME =	USER NAME = Verenskif	DESIGNED -	REVISED -	STATE OF ILLINOIS DEPARTMENT OF TRANSPORTATION	PRE-MGS HIGHWAY STANDARD 631026-02 TRAFFIC BARRIER TERMINAL, 5 & 5A EFFECTIVE 4-1-06	F.A. R.E.	SECTION	COUNTY	TOTAL SHEETS	SHEET NO.	
pw\ill084EBIDINTEG\illinois.gov\PIWIDOT\Documents\DOT Offices\District 6\Projects\0672\Drawings\631026-02\631026-02-01\631026-02-01-01.dgn	PLLOT SCALE = 26.0000' / in.	CHECKED -	REVISED -			*VAR	**	VARIOUS	17	13	
Default	PLLOT DATE = 10/18/2016	DATE -	REVISED -			CONTRACT NO. 72J52					
						ILLINOIS FED. AID PROJECT **06 CABLE/GUARDRAIL 2017-2					



PLAN



ELEVATION

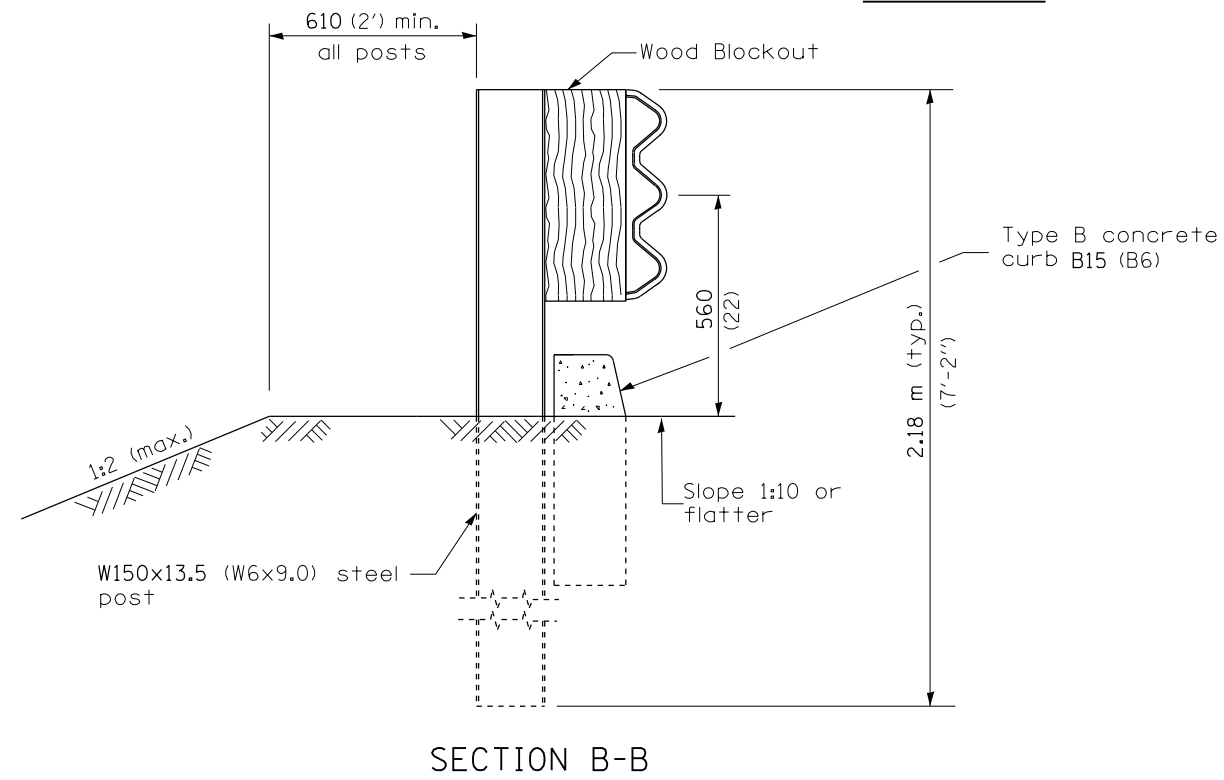
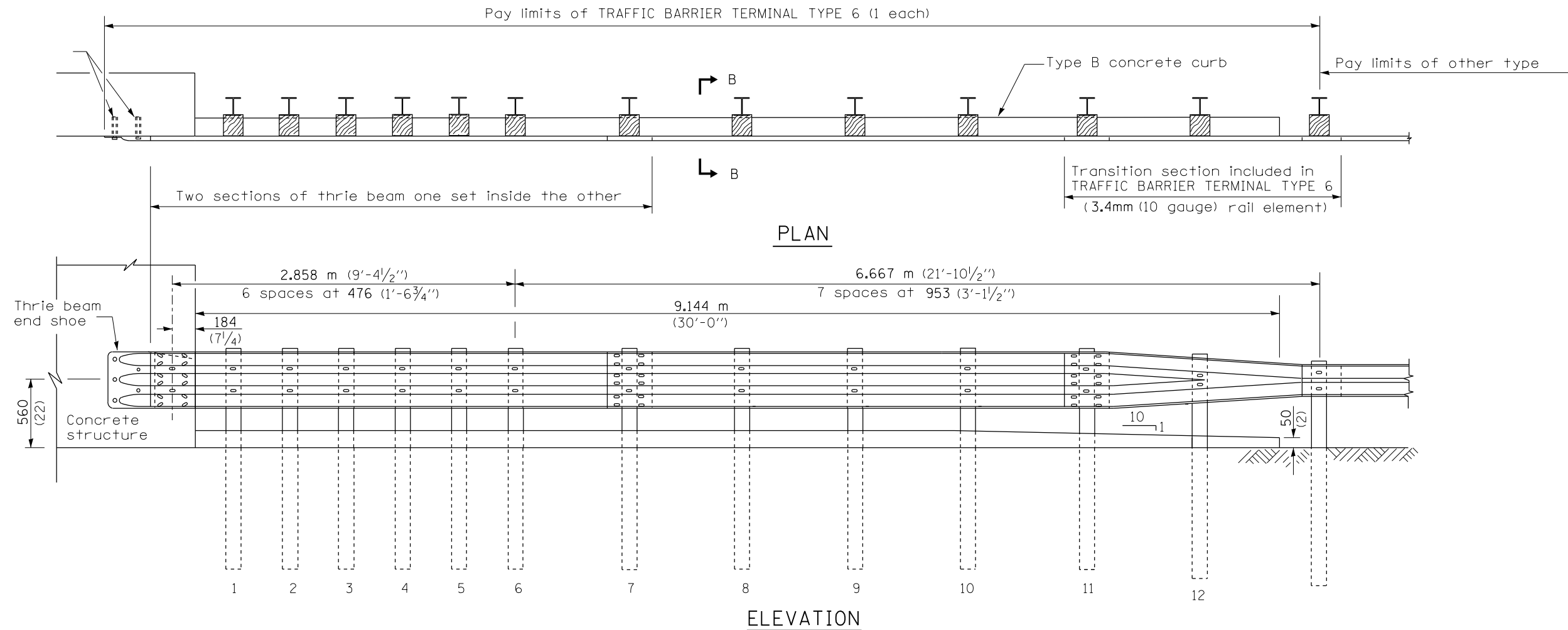


SECTION A-A

GENERAL NOTES

- See Standard 630001 for details of guardrail not shown.
- Thrie beam rail shall be bolted to block-out at all posts.
- See Standard 420401 for details of bridge approach pavement.
- All slope ratios are expressed as units of vertical displacement to units of horizontal displacement (V:H).
- All dimensions are in millimeters (inches) unless otherwise shown.

FILE NAME =	USER NAME = Verenskifa	DESIGNED -	REVISED -	STATE OF ILLINOIS DEPARTMENT OF TRANSPORTATION	PRE-MGS HIGHWAY STANDARD 631031-05 TRAFFIC BARRIER TERMINAL, TYPE 6 EFFECTIVE 4-1-06	F.A. RTE.	SECTION	COUNTY	TOTAL SHEETS	SHEET NO.
Default	PLOT SCALE = 26.0000' / in.	CHECKED -	REVISED -			•VAR	**	VARIOUS	17	14
	PLOT DATE = 10/18/2016	DATE -	REVISED -			SCALE: SHEET 1 OF 3 SHEETS STA. TO STA.		CONTRACT NO. 72J52		



FILE NAME =	USER NAME = Verenskif	DESIGNED -	REVISED -
p:\11\084EBIDINTEG.illinois.gov\PIWIDOT\Documents\DOT Offices\District 6\Projects\0672\DRAWING\DATA\60\Sheets\0672J52-sht-63103-REVISED\BAR_TERM_T6.dgn		CHECKED -	REVISED -
Default	PLOT SCALE = 26.0000' / in.	DATE -	REVISED -
	PLOT DATE = 10/18/2016		

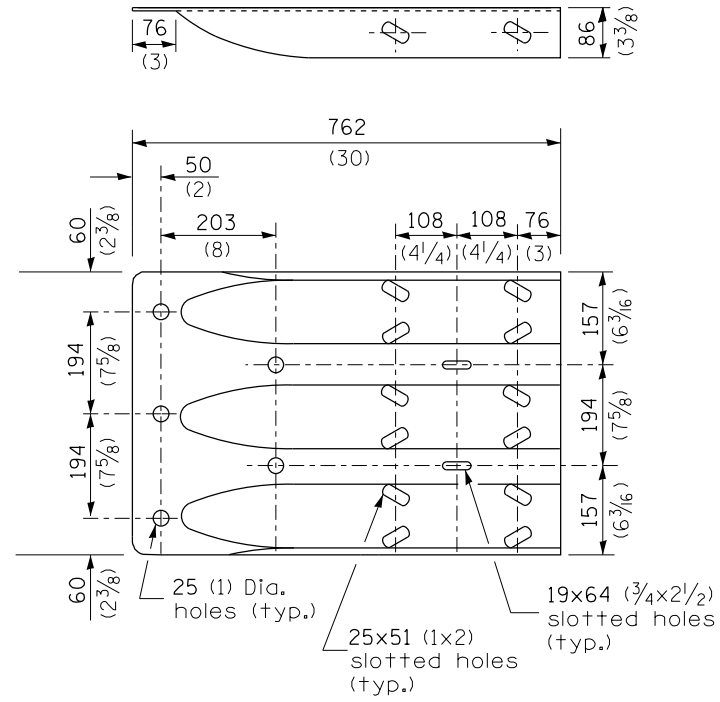
STATE OF ILLINOIS
DEPARTMENT OF TRANSPORTATION

PRE-MGS HIGHWAY STANDARD 631031-05
TRAFFIC BARRIER TERMINAL, TYPE 6 EFFECTIVE 4-1-06

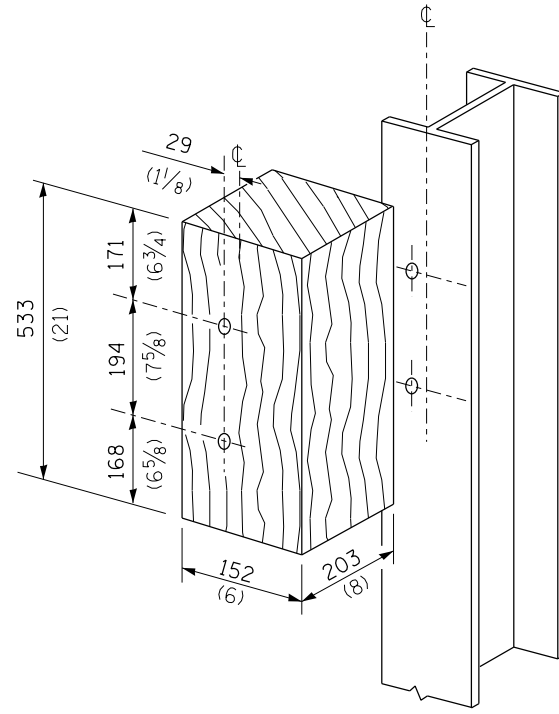
SCALE: SHEET 2 OF 3 SHEETS STA. TO STA.

F.A. RTE.	SECTION	COUNTY	TOTAL SHEETS	SHEET NO.
VAR	**	VARIOUS	17	15
			CONTRACT NO. 72J52	
ILLINOIS FED. AID PROJECT				

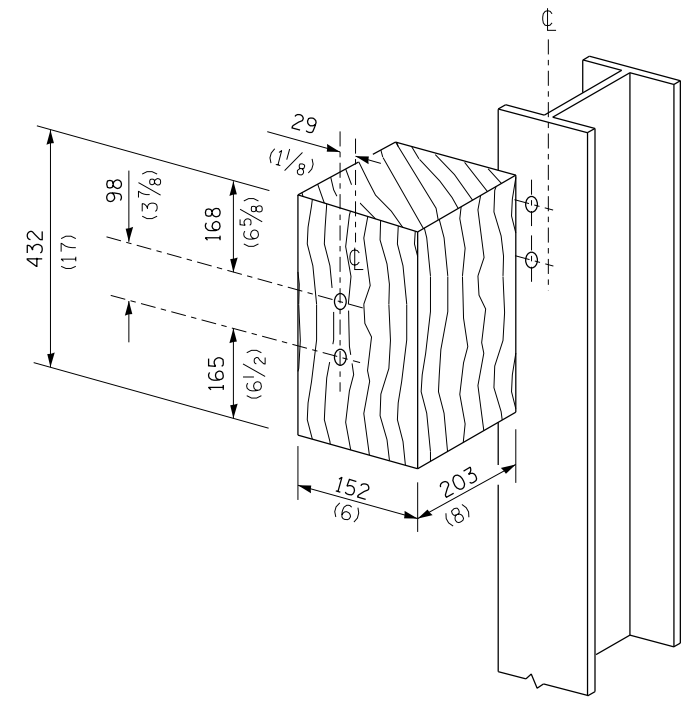
**D6 CABLE/GUARDRAIL 2017-2



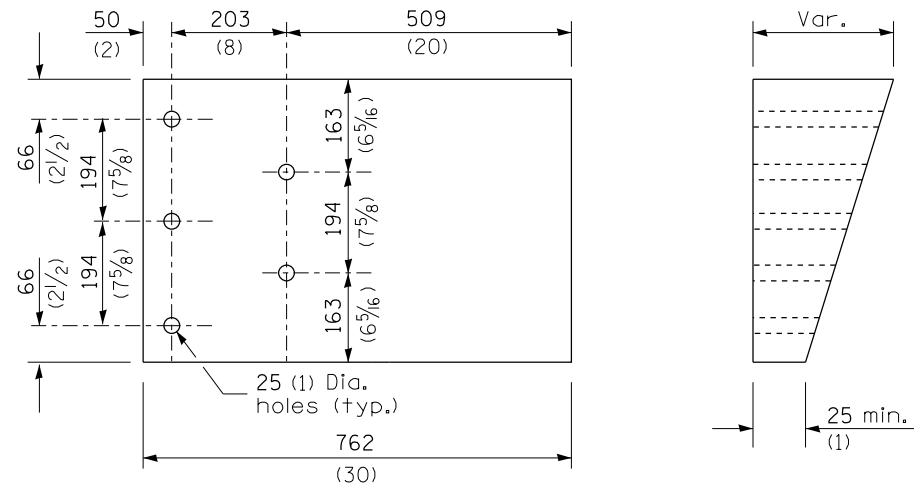
THRIE BEAM END SHOE DETAIL



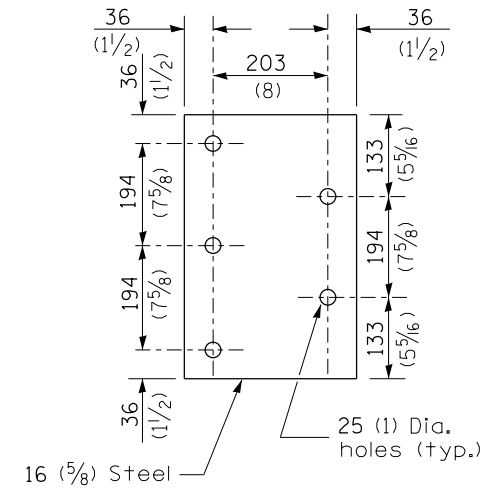
POSTS 1-11 WOOD BLOCKOUT DETAIL



POST 12 WOOD BLOCKOUT DETAIL



PARAPET WOOD BLOCK-OUT DETAIL



PARAPET STEEL BEARING PLATE DETAIL

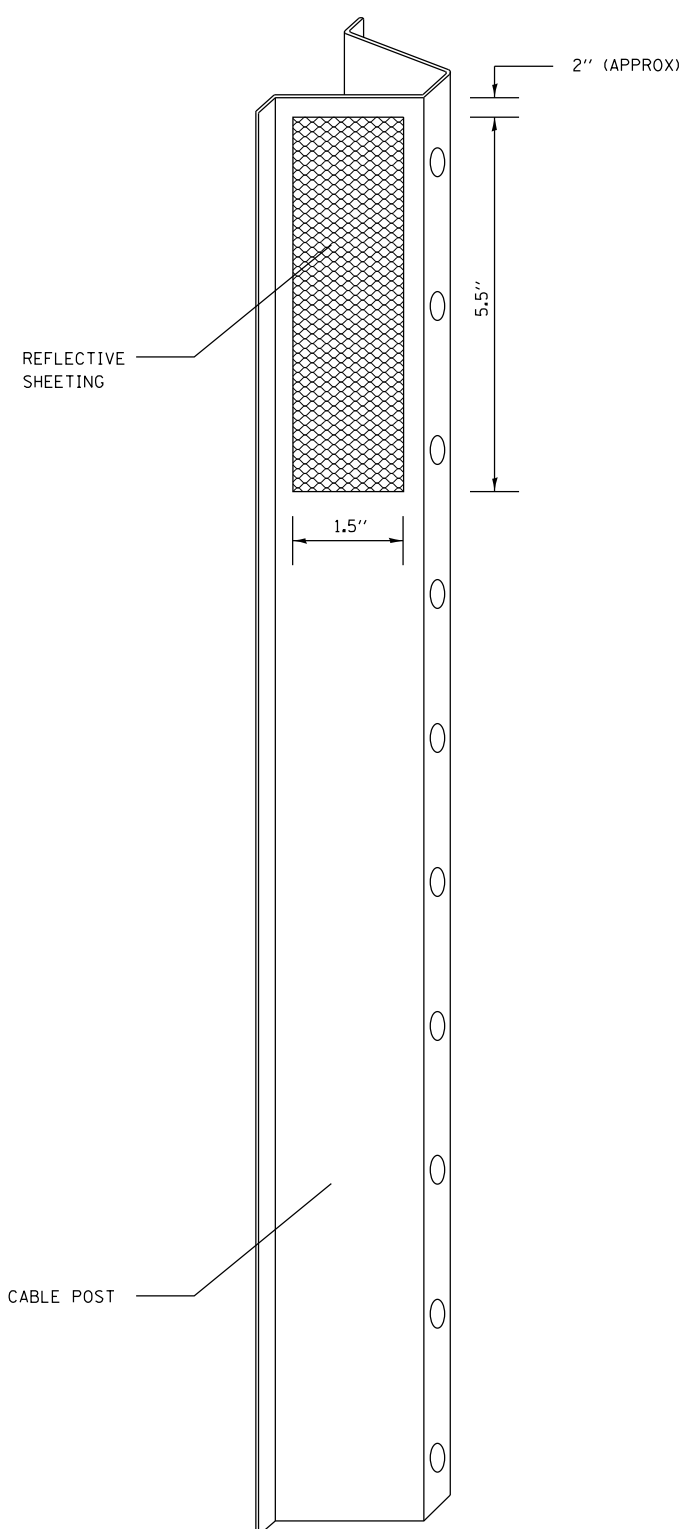
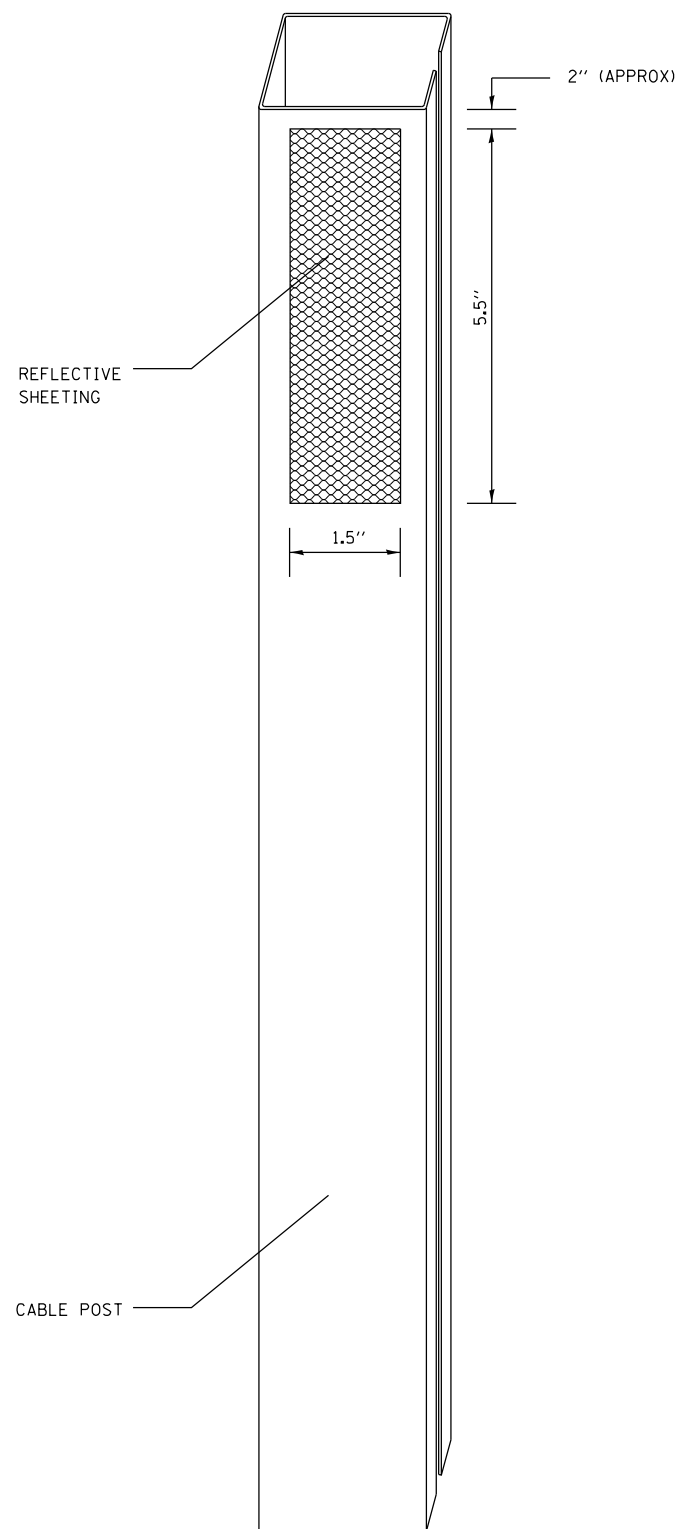
(5 each individual 125x125x16 (5x5x5/8) steel plates with centered 25 (1) holes may be substituted for the plate shown.)

FILE NAME =	USER NAME = Verenskif	DESIGNED -	REVISED -	STATE OF ILLINOIS DEPARTMENT OF TRANSPORTATION	PRE-MGS HIGHWAY STANDARD 631031-05 TRAFFIC BARRIER TERMINAL, TYPE 6 EFFECTIVE 4-1-06	F.A. RTE.	SECTION	COUNTY	TOTAL SHEETS	SHEET NO.
pw:\IL\084EBIDINTEG\Illinois.gov\PWIDOT\Documents\DOT Offices\District 6\Projects\0672\Drawings\600sheets\0672J52-sht-631031-05\0672J52-TERM-T6.dgn	PLOT SCALE = 26.0000' / in.	CHECKED -	REVISED -			•VAA	••	VARIOUS	17	16
Default	PLOT DATE = 10/18/2016	DATE -	REVISED -			CONTRACT NO. 72J52			ILLINOIS FED. AID PROJECT	

SCALE: SHEET 3 OF 3 SHEETS STA. TO STA.

••D6 CABLE/GUARDRAIL 2017-2

••D6 CABLE/GUARDRAIL 2017-2



NOTES:

MATERIAL: THE MATERIAL SHALL BE IN ACCORDANCE WITH SECTION 1090 AND 1091 OF THE STANDARD SPECIFICATIONS.

CONSTRUCTION REQUIREMENTS: THE REFLECTIVE SHEETING SHALL BE INSTALLED DIRECTLY ON THE CABLE POSTS. THE REFLECTIVE SHEETING SHALL BE INSTALLED AS SHOWN IN THE PLANS, ON EVERY OTHER POST (IN ORDER TO PROVIDE A SPACING OF 40'). THE SURFACE OF THE POST SHALL BE CLEANED OF ALL CONTAMINANTS PRIOR TO THE INSTALLATION OF THE REFLECTIVE SHEETING. THE SURFACE SHALL BE CLEANED USING A 5-8 PERCENT PHOSPHORIC ACID SOLUTION AND RINSED WITH CLEAN WATER OR AS RECOMMENDED BY THE MANUFACTURER OF THE REFLECTIVE SHEETING AND AS APPROVED BY THE ENGINEER.

BASIS OF PAYMENT: THIS WORK WILL BE PAID FOR AT THE CONTRACT UNIT PRICE EACH FOR CABLE GUARD MARKER.

FILE NAME =	USER NAME = Verenskif	DESIGNED -	REVISED -
p:\11\084EBIDINTEG\illinois.gov\PWIDOT\Documents\DOT Offices\District 6\Projects\0672\Drawings\EA0\Sheets\0672J52-sht-CBL-GUARDRAIL.dgn		DRAWN -	REVISED -
Default	PLOT SCALE = 100.0000' / 1in.	CHECKED -	REVISED -
	PLOT DATE = 10/18/2016	DATE -	REVISED -

**STATE OF ILLINOIS
DEPARTMENT OF TRANSPORTATION**

CABLE GUARD MARKERDETAIL

SCALE: SHEET 1 OF 1 SHEETS STA. TO STA.

F.A. RTE.	SECTION	COUNTY	TOTAL SHEETS	SHEET NO.
	**	VARIOUS	17	17
			CONTRACT NO. 72J52	
ILLINOIS FED. AID PROJECT				