

STATE OF ILLINOIS  
DEPARTMENT OF TRANSPORTATION  
DIVISION OF HIGHWAYS

**PROPOSED  
HIGHWAY PLANS**

VARIOUS ROUTES  
DIST 8 WEED SPRAYING 2017-2  
VARIOUS COUNTIES

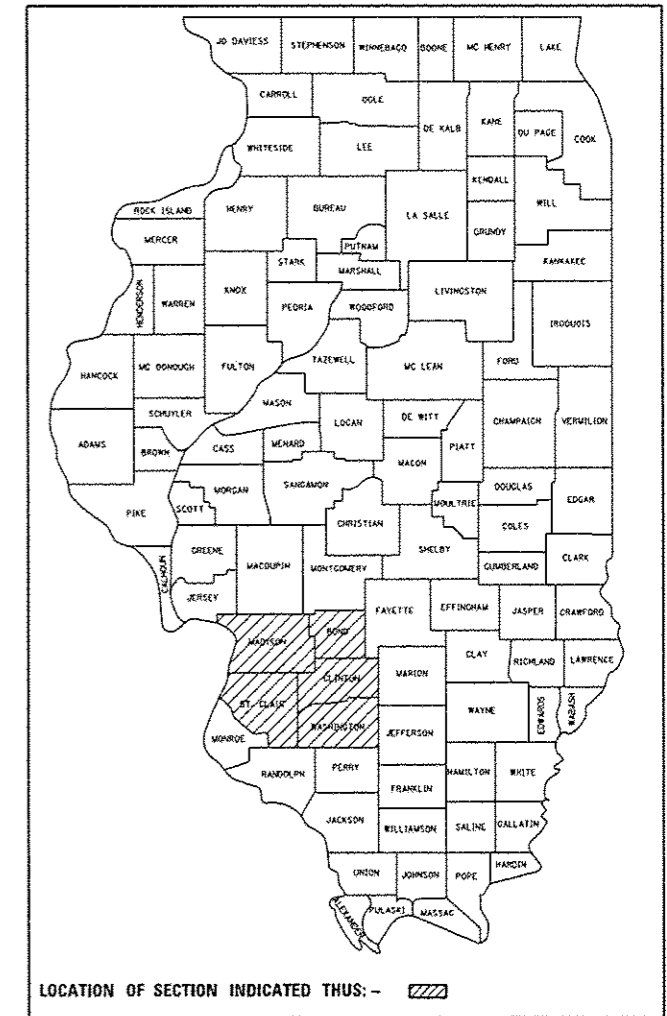
**INDEX OF SHEETS**

1. COVER SHEET, INDEX OF SHEETS
2. HIGHWAY STANDARDS, SPRAY SCHEDULE, AND COMMITMENTS
3. SUMMARY OF QUANTITIES
- 4.-6. LOCATION MAPS

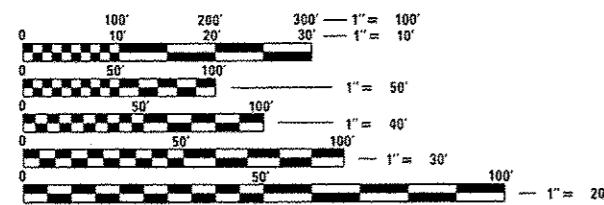
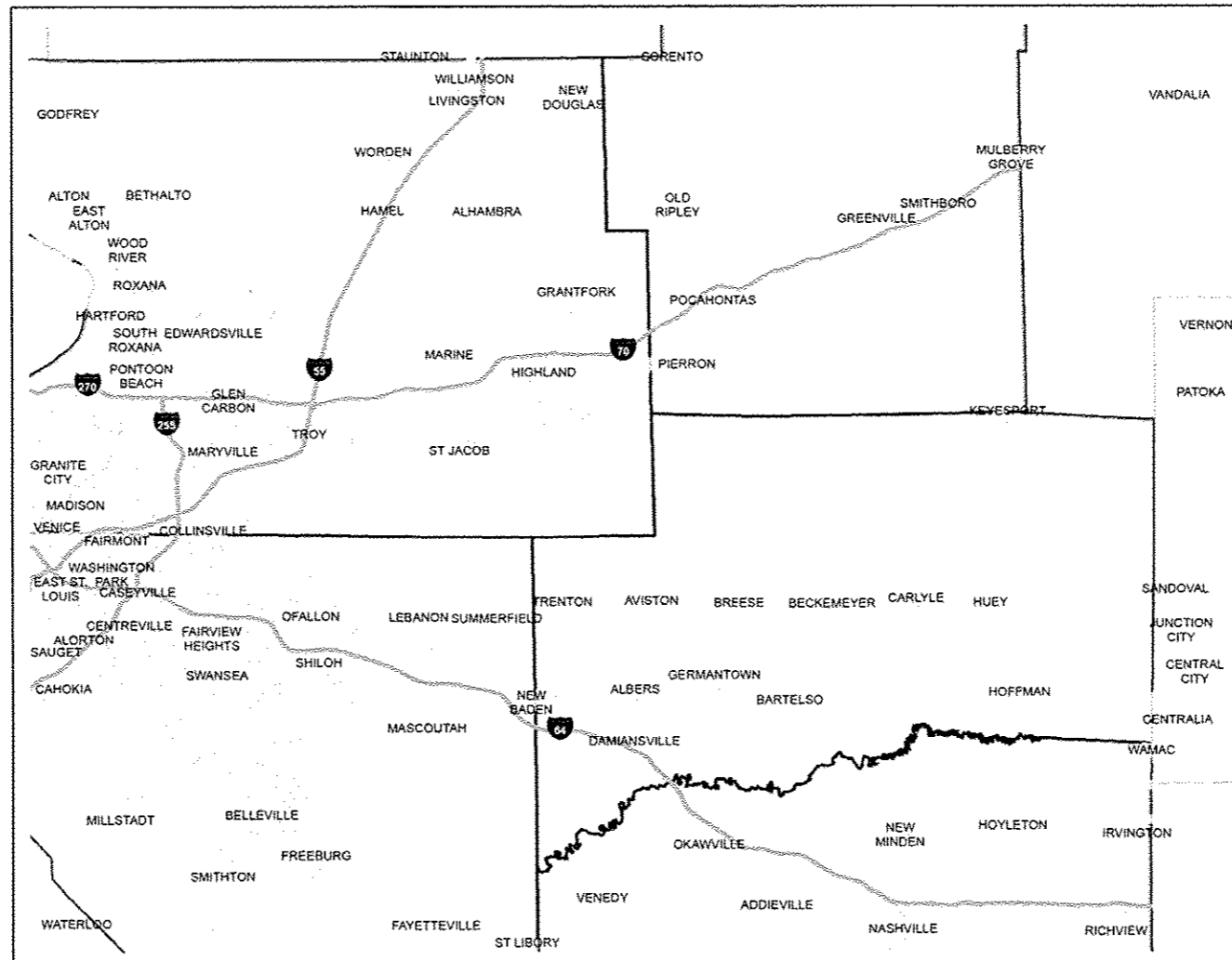
F.A. RTE.	SECTION	COUNTY	TOTAL SHEETS	SHEET NO.
*	**	VARIOUS	6	1
		ILLINOIS	CONTRACT NO. 76K11	

• VARIOUS  
•• DIST 8 WEED SPRAYING 2017-2

D-98-027-17



C-98-016-17



FULL SIZE PLANS HAVE BEEN PREPARED USING STANDARD ENGINEERING SCALES. REDUCED SIZED PLANS WILL NOT CONFORM TO STANDARD SCALES. IN MAKING MEASUREMENTS ON REDUCED PLANS, THE ABOVE SCALES MAY BE USED.

J.U.L.I.E.  
JOINT UTILITY LOCATION INFORMATION FOR EXCAVATION  
1-800-892-0123  
OR 811

PROJECT ENGINEER: HERVE GELIN (618) 346-3179  
PROJECT MANAGER: BILLIE OWEN (618) 346-3209

CONTRACT NO. 76K11

DETAILED LOCATION MAPS SEE SHEETS 4-6

STATE OF ILLINOIS  
DEPARTMENT OF TRANSPORTATION

SUBMITTED *Oct 27 2016*  
*Jeffrey K. Kan...*  
REGIONAL ENGINEER

*Dec 19 2016*  
*Maureen M. Addis PE*  
ENGINEER OF DESIGN AND ENVIRONMENT

*Dec 9 2016*  
*Paul...*  
DIRECTOR OF PROGRAM DEVELOPMENT

**PRINTED BY THE AUTHORITY  
OF THE STATE OF ILLINOIS**

STANDARDS

701001-02  
 701006-05  
 701101-05  
 701106-02  
 701301-04  
 701426-09  
 701901-06

COMMITMENTS  
 NONE

DISTRICT 8 WEED SPRAYING 2017-2			
COUNTY	ROUTE	MILES	ACRES
MADISON	FAI 55	7	160
MADISON & BOND	FAI 70	37	810
ST. CLAIR, WASHINGTON & CLINTON	FAI 64	38	830
TOTAL			1800

60' SWATH (BOTH OUTSIDES AND ONE MEDIAN)  
 OMIT SPRAYING 50' PRIOR, THROUGH, AND 50' AFTER ANY WATERWAY  
 (INCLUDING BUT NOT LIMITED TO RIVERS AND CREEKS).

IT IS ESTIMATED THAT THE CONTRACTOR WILL NEED 70 GALLONS OF "METHOD", OR APPROVED EQUIVALENT, 70 GALLONS OF "MILESTONE", OR APPROVED EQUIVALENT, AND 40 POUNDS OF "ESCORT", OR APPROVED EQUIVALENT FOR HERBICIDE SPRAYING. OFF ROAD AND ON ROAD QUANTITIES ARE APPROXIMATE AND ARE SUBJECT TO CHANGE.

\* VARIOUS  
 \*\* DIST 8 WEED SPRAYING 2017-2

FILE NAME =	USER NAME = jwasko	DESIGNED -	REVISED -	<b>STATE OF ILLINOIS DEPARTMENT OF TRANSPORTATION</b>	<b>HIGHWAY STANDARDS, SPRAY SCHEDULE, AND COMMITMENTS</b>	F.A. RTE.	SECTION	COUNTY	TOTAL SHEETS	SHEET NO.	
per\\JL864E81INTEG:illinois.gov\PI\DOT\Documents\DOT Offices\District 8\Projects\0876\Drawings\040\sheet\0876K11-ght-cover.dwg	PLOT SCALE = 100.0000' / in.	CHECKED -	REVISED -			*	**	MADISON	6	2	
Default	PLOT DATE = 10/28/2016	DATE -	REVISED -			SCALE: SHEET OF SHEETS STA. TO STA.		CONTRACT NO. 76K11			
ILLINOIS FED. AID PROJECT											

00000000

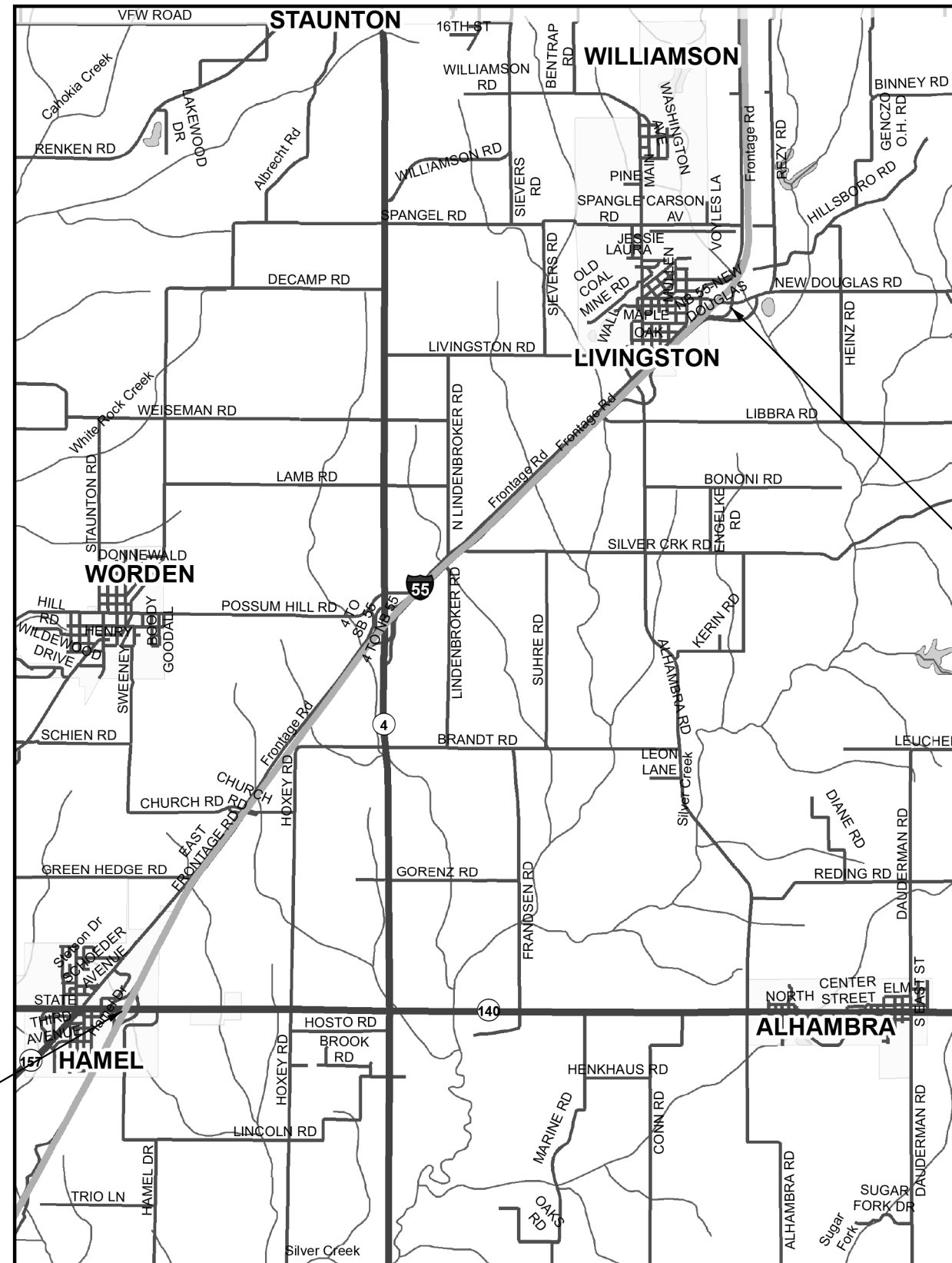
100 %  
STATE

CODE NO.	ITEM	UNIT	TOTAL QUANTITY	CONSTR. CODE
				0031
67100100	MOBILIZATION	LSUM	1	1
K0012950	HERBICIDE SPRAYING	ACRE	1800	1800

2

• VARIOUS  
•• DIST 8 WEED SPRAYING 2017-2

FILE NAME =	USER NAME = lmvskm	DESIGNED -	REVISED -	<b>STATE OF ILLINOIS DEPARTMENT OF TRANSPORTATION</b>	<b>SUMMARY OF QUANTITIES</b>				F.A. RTE.	SECTION	COUNTY	TOTAL SHEETS	SHEET NO.
pw\11084EBIDINTEG.illinois.gov\FWIDOT\Documents\DOT Offices\District 8\Projects\0876K11\0876K11-001\0876K11-001.dwg	PROGRAM =	CHECKED -	REVISED -						•	**	MADISON	6	3
Default	PLOT SCALE = 100.0000 / 1 in.	DATE -	REVISED -		SCALE:	SHEET	OF	SHEETS	STA.	TO STA.	CONTRACT NO. 76K11		
	PLOT DATE = 10/29/2016	DATE -	REVISED -		ILLINOIS FED. AID PROJECT								



BEGIN EXIT 30

END EXIT 37

MADISON COUNTY  
I-55 EXIT 30 TO EXIT 37

- VARIOUS
- DIST 8 WEED SPRAYING 2017-2

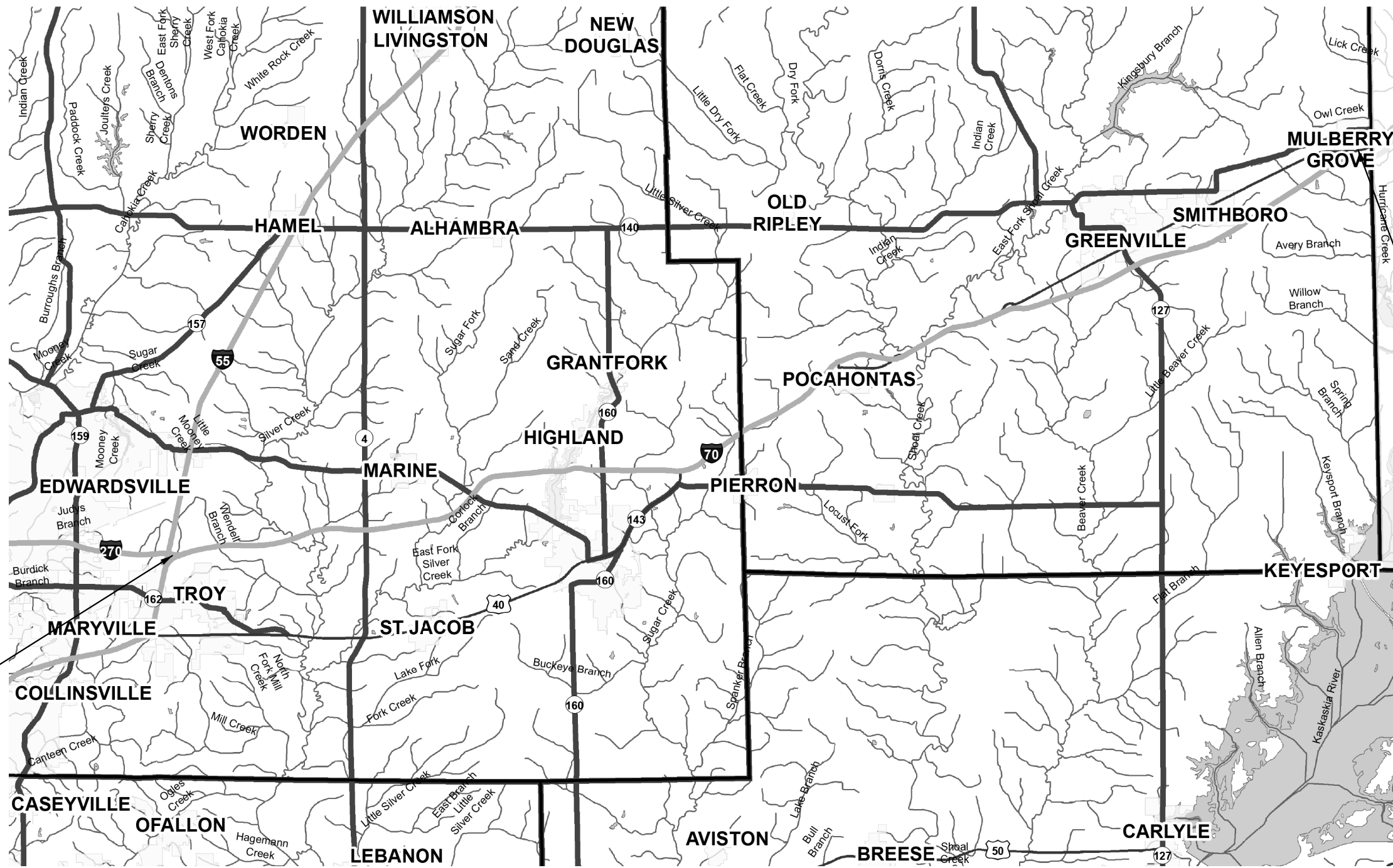
FILE NAME =	USER NAME = lewiska	DESIGNED -	REVISED -
pw\11084EBIDINTEG.illinois.gov\PIWIDOT\Documents\IDOT Offices\District 8\Projects\D876K11\GAD\Drawings\876K11-sht-cover.dwg		DRAWN -	REVISED -
Default	PLOT SCALE = 100.0000' / 1in.	CHECKED -	REVISED -
	PLOT DATE = 10/28/2016	DATE -	REVISED -

**STATE OF ILLINOIS  
DEPARTMENT OF TRANSPORTATION**

**LOCATION MAP**

SCALE: SHEET OF SHEETS STA. TO STA.

RT.	SECTION	COUNTY	TOTAL SHEETS	SHEET NO.
•	••	VARIOUS	6	4
			CONTRACT NO. 76K11	
ILLINOIS FED. AID PROJECT				



BEGIN EXIT 15

END EXIT 52

MADISON AND BOND COUNTIES  
I-70 EXIT 15 TO EXIT 52

- VARIOUS
- DIST 8 WEED SPRAYING 2017-2

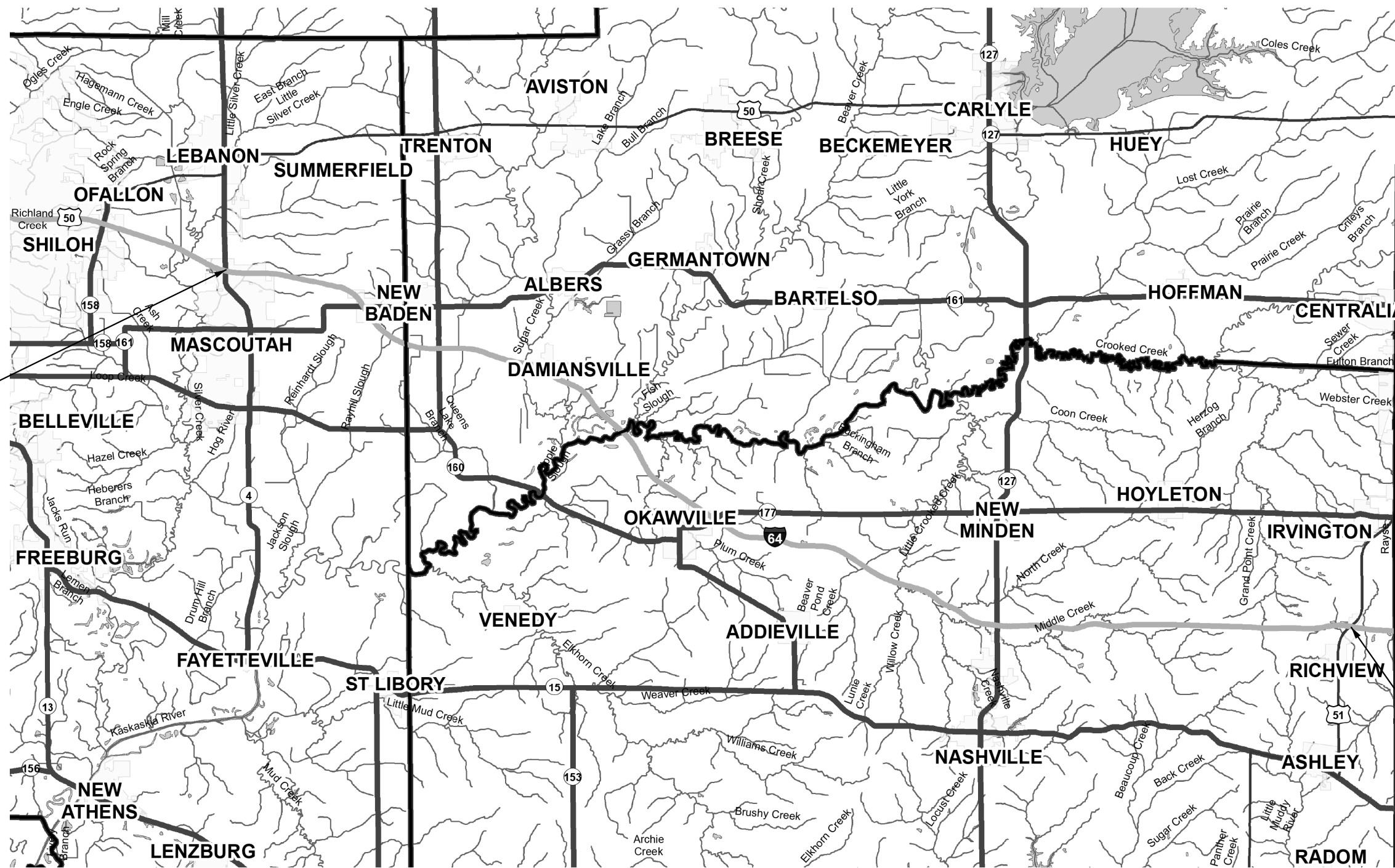
FILE NAME =	USER NAME = lewiska	DESIGNED -	REVISED -
pw:\IL084EBIDINTEG\illinois.gov\PWIDOT\Documents\IDOT Offices\District 8\Projects\D875K\DRAWING\GAD\Sheets\D876K11-sht-cover.dwg		REVISOR -	REVISOR -
Default	PLOT SCALE = 100.0000' / 1" =	CHECKED -	REVISED -
	PLOT DATE = 10/28/2016	DATE -	REVISED -

**STATE OF ILLINOIS  
DEPARTMENT OF TRANSPORTATION**

**LOCATION MAP**

SCALE: SHEET OF SHEETS STA. TO STA.

RT.	SECTION	COUNTY	TOTAL SHEETS	SHEET NO.
•	••	VARIOUS	6	5
CONTRACT NO. 76K11				
ILLINOIS FED. AID PROJECT				



BEGIN EXIT 23

END EXIT 61

ST. CLAIR, CLINTON, AND WASHINGTON COUNTIES  
I-64 EXIT 23 TO EXIT 61

- VARIOUS
- DIST 8 WEED SPRAYING 2017-2

FILE NAME =	USER NAME = lewiska	DESIGNED -	REVISED -
pw:\IL\084EBID\INTEG\illinois.gov\PWIDOT\Documents\IDOT Offices\District 8\Projects\0875\DRAWING\GAD\sheet\0875K11-sht-cover.dwg		DRAWN -	REVISED -
Default	PLOT SCALE = 100.0000' / in.	CHECKED -	REVISED -
	PLOT DATE = 10/28/2016	DATE -	REVISED -

STATE OF ILLINOIS  
DEPARTMENT OF TRANSPORTATION

LOCATION MAP

SCALE: SHEET OF SHEETS STA. TO STA.

F.A. RTE.	SECTION	COUNTY	TOTAL SHEETS	SHEET NO.
•	••	MADISON	6	6
CONTRACT NO. 76K11				
ILLINOIS FED. AID PROJECT				