

STATE OF ILLINOIS
DEPARTMENT OF TRANSPORTATION

**PROPOSED
HIGHWAY PLANS**

F.A.U. ROUTE 7706
(I55 BUS, OLD US 66, LINCOLN PARKWAY)
SECTION (22) RS-6, MED & (23) RS-5
PROJECT ACHSIP-ACM-7706(005)
TYPE of IMPROVEMENT 3R & SAFETY
LOGAN COUNTY

C-96-022-11

F.A. RTE.	SECTION	COUNTY	TOTAL SHEETS	SHEET NO.
		ILLINOIS	343	1
CONTRACT NO. 72E02				
* 343 + 4 = 347 TOTAL SHEETS				

D-96-022-11

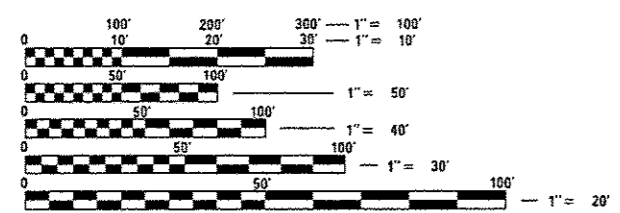


FOR INDEX OF SHEETS, SEE SHEET NO. 2

ROADWAY CLASSIFICATION
MINOR ARTERIAL

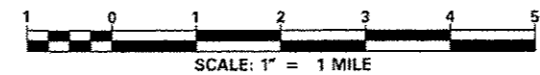
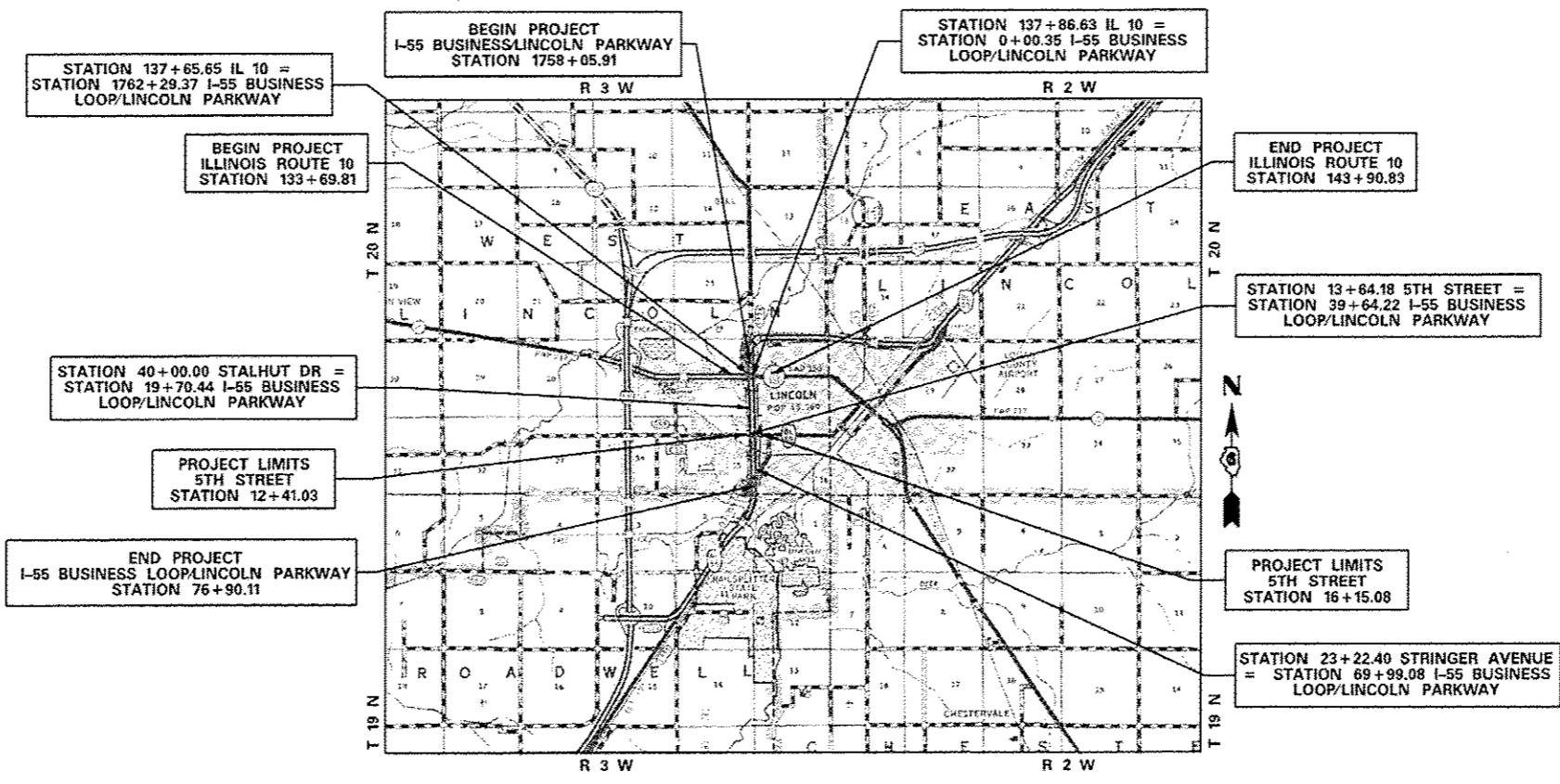
AVERAGE DAILY TRAFFIC (2013)
IL 10/WOODLAWN ROAD TO 5TH STREET
7,500 (2013)
PV = 94.90%
SU = 3.77%
MU = 1.33%

5TH STREET TO STRINGER AVENUE
4,000 (2013)
PV = 90.25%
SU = 6.25%
MU = 3.50%



FULL SIZE PLANS HAVE BEEN PREPARED USING STANDARD ENGINEERING SCALES. REDUCED SIZED PLANS WILL NOT CONFORM TO STANDARD SCALES. IN MAKING MEASUREMENTS ON REDUCED PLANS, THE ABOVE SCALES MAY BE USED.

J.U.L.I.E.
JOINT UTILITY LOCATION INFORMATION FOR EXCAVATION
1-800-892-0123
OR 811



GROSS LENGTH = 8114.35 FT. = 1.536 MILE
NET LENGTH = 8114.35 FT. = 1.536 MILE

PROJECT ENGINEER JAY WAVERING 217-785-9046
PROJECT MANAGER MICHAEL WHITLING 217-524-0239

CONTRACT NO. 72E02

STATE OF ILLINOIS
DEPARTMENT OF TRANSPORTATION

SUBMITTED *October 20, 2016*
Jeffrey M. South REGIONAL ENGINEER
Dec 9 2016
Mawoon M. Addis ENGINEER OF DESIGN AND ENVIRONMENT
Dec 9 2016
Amelia DIRECTOR OF PROGRAM DEVELOPMENT

**PRINTED BY THE AUTHORITY
OF THE STATE OF ILLINOIS**

REV. 1-9-2017

CONSTRUCTION CODE

CODE NO	ITEM	UNIT	TOTAL QUANTITY	PPS# 6-00625-0000	PPS# 6-00477-0000	PPS# 6-00625-0000	PPS# 6-00625-0000	PPS# 6-00625-0000	PPS# 6-00477-0000	PPS# 6-00625-0000	PPS# 6-00625-0000
				80%FED/20%STATE	90%FED/10%STATE	IL 10 INTERSECTION & INTERCONNECT 80%FED/20%STATE	STAHLHUT DRIVE INTERSECTION 80%FED/13.33%STATE/ 6.67%LOCAL	5TH STREET INTERSECTION 80%FED/15%STATE/ 5%LOCAL	5TH STREET INTERSECTION 90%FED/10%STATE	80%FED/20%LOCAL	100%LOCAL
				STP ROADWAY	HSIP ROADWAY	STP TRAFFIC SIGNALS	STP TRAFFIC SIGNALS	STP TRAFFIC SIGNALS	HSIP TRAFFIC SIGNALS	STP SIDEWALK	STP LIGHTING
				URBAN	URBAN	URBAN	URBAN	URBAN	URBAN	URBAN	URBAN
60622305	CONCRETE MEDIAN, TYPE SM - 4.12	SO FT	882	882							
60622400	CONCRETE MEDIAN, TYPE SM-6.06	SO FT	603		603						
60622800	CONCRETE MEDIAN, TYPE SM-6.12	SO FT	2561		2561						
* 66900200	NON-SPECIAL WASTE DISPOSAL	CU YD	2000	2000							
67000400	ENGINEER'S FIELD OFFICE, TYPE A	CAL MO	15	15							
* 66900450	SPECIAL WASTE PLANS AND REPORTS	L SUM	1	1							
67100100	MOBILIZATION	LSUM	1	0.7	0.3						
* 66900530	SOIL DISPOSAL ANALYSIS	EACH	16	16							
70100320	TRAFFIC CONTROL AND PROTECTION, STANDARD 701422	LSUM	1	1							
67201100	SEALING ABANDON MONITORING WELLS	EACH	1	1							
70100420	TRAFFIC CONTROL AND PROTECTION, STANDARD 701411	EACH	1	1							
70100460	TRAFFIC CONTROL AND PROTECTION, STANDARD 701306	LSUM	1	1							
70102635	TRAFFIC CONTROL AND PROTECTION, STANDARD 701701	LSUM	1	1							
70103815	TRAFFIC CONTROL SURVEILLANCE	CAL DA	60	60							
70106800	CHANGEABLE MESSAGE SIGN	CAL MO	48	48							
70300100	SHORT TERM PAVEMENT MARKING	FOOT	4233	2587	1646						
70300150	SHORT TERM PAVEMENT MARKING REMOVAL	SO FT	1397	854	543						
70300210	TEMPORARY PAVEMENT MARKING LETTERS AND SYMBOLS	SO FT	592.8	93.6	499.2						

* SPECIALTY ITEM

REV. 1-9-2017

FILE NAME	USER NAME	DESIGNED	REVISED	STATE OF ILLINOIS DEPARTMENT OF TRANSPORTATION	SUMMARY OF QUANTITIES				F.A.U. RTE.	SECTION	COUNTY	TOTAL SHEETS	SHEET NO.
Summary of Quantities	18/21/2016	CHECKED	REVISED						7706	*	LOGAN	343	10
					SCALE:	SHEET	OF	SHEETS	STA.	TO	STA.	ILLINOIS FED. AID PROJECT	

CODE NO	ITEM	UNIT	TOTAL QUANTITY	CONSTRUCTION CODE								
				PPS# 6-00625-0000 80%FED/20%STATE	PPS# 6-00477-0000 IL 10 INTERSECTION 90%FED/10%STATE	PPS# 6-00625-0000 IL 10 INTERSECTION & INTERCONNECT 80%FED/20%STATE	PPS# 6-00625-0000 STAHLHUT DRIVE INTERSECTION 80%FED/13.33%STATE/ 6.67%LOCAL	PPS# 6-00625-0000 5TH STREET INTERSECTION 80%FED/15%STATE/ 5%LOCAL	PPS# 6-00477-0000 5TH STREET INTERSECTION 90%FED/10%STATE	PPS# 6-00625-0000 80%FED/20%LOCAL	PPS# 6-00625-0000 100%LOCAL	
				STP ROADWAY URBAN	HSIP ROADWAY URBAN	STP TRAFFIC SIGNALS URBAN	STP TRAFFIC SIGNALS URBAN	STP TRAFFIC SIGNALS URBAN	HSIP TRAFFIC SIGNALS URBAN	STP SIDEWALK URBAN	STP LIGHTING URBAN	
*78003130	PREFORMED PLASTIC PAVEMENT MARKING, TYPE B - LINE 6"	FOOT	1034	230	804							
*78009005	MODIFIED URETHANE PAVEMENT MARKING - LINE 5"	FOOT	43995	28248	15747							
*78009006	MODIFIED URETHANE PAVEMENT MARKING - LINE 6"	FOOT	6208	1111	5097							
*78009008	MODIFIED URETHANE PAVEMENT MARKING - LINE 8"	FOOT	1854	583	1271							
*78009012	MODIFIED URETHANE PAVEMENT MARKING - LINE 12"	FOOT	3098	1541	1557							
*78100100	RAISED REFLECTIVE PAVEMENT MARKER	EACH	676	303	373							
*78200020	CURB REFLECTORS	EACH	403	242	161							
78300200	RAISED REFLECTIVE PAVEMENT MARKER REMOVAL	EACH	676	303	373							
*81028350	UNDERGROUND CONDUIT, PVC, 2" DIA.	FOOT	1748		1748							
*81028370	UNDERGROUND CONDUIT, PVC, 3" DIA.	FOOT	71			71						
*81028390	UNDERGROUND CONDUIT, PVC, 4" DIA.	FOOT	272			131		141				
*81028750	UNDERGROUND CONDUIT, COILABLE NONMETALLIC CONDUIT, 2" DIA.	FOOT	202									202
*81400100	HANDHOLE	EACH	2			2						
*81500100	GULFBOX JUNCTION	EACH	8			8						
*81500130	GULFBOX JUNCTION REMOVAL	EACH	9			9						
*81003010	UNIT DUCT, 600V, 2-1C NO. 10, 1/C NO. 10 GROUND, (XLP - TYPE USE), 3/4" POLYETHYLENE	FOOT	442									442

* SPECIALTY ITEM

REV. 1-9-2017

FILE NAME =	USER NAME = whistlingm	DESIGNED -	REVISED -	STATE OF ILLINOIS DEPARTMENT OF TRANSPORTATION	SUMMARY OF QUANTITIES				F.A.U. RTE.	SECTION	COUNTY	TOTAL SHEETS	SHEET NO.
Summary of Quantities	DESIGNED BY	CHECKED -	REVISED -						7706	*	LOGAN	343	12
	DATE	DATE	DATE						CONTRACT NO. 72E02				
									ILLINOIS FED. AID PROJECT				

* (22)RS-6, MED & (23) RS-5

CODE NO	ITEM	UNIT	TOTAL QUANTITY	CONSTRUCTION CODE							
				PPS# 6-00625-0000	PPS# 6-00477-0000	PPS# 6-00625-0000	PPS# 6-00625-0000	PPS# 6-00625-0000	PPS# 6-00477-0000	PPS# 6-00625-0000	PPS# 6-00625-0000
				80%FED/20%STATE	90%FED/10%STATE	IL 10 INTERSECTION & INTERCONNECT 80%FED/20%STATE	STAHLHUT DRIVE INTERSECTION 80%FED/13.33%STATE/ 6.67%LOCAL	5TH STREET INTERSECTION 80%FED/15%STATE/ 5%LOCAL	5TH STREET INTERSECTION 90%FED/10%STATE	80%FED/20%LOCAL	100%LOCAL
				STP ROADWAY	HSIP ROADWAY	STP TRAFFIC SIGNALS	STP TRAFFIC SIGNALS	STP TRAFFIC SIGNALS	HSIP TRAFFIC SIGNALS	STP SIDEWALK	STP LIGHTING
				URBAN	URBAN	URBAN	URBAN	URBAN	URBAN	URBAN	URBAN
X0327371	PLUG EXISTING PIPE	CU YD	3.7	3.7							
X0327979	PAVEMENT MARKING REMOVAL - GRINDING	SQ FT	9377	6457	2920						
X0327980	PAVEMENT MARKING REMOVAL - WATER BLASTING	SQ FT	2758	1829	929						
*X1400095	LUMINAIRE, LED, HORIZONTAL MOUNT, HIGH WATTAGE	EACH	7								7
X4060605	LEVELING BINDER (MACHINE METHOD), SPECIAL	TON	3690	2651	1039						
X4401198	HOT-MIX ASPHALT SURFACE REMOVAL, VARIABLE DEPTH	SO YD	73240	43300	29940						
X4402020	CONCRETE MEDIAN SURFACE REMOVAL	SO FT	15268		15268						
X5400504	PRECAST CONCRETE BOX CULVERTS 2' X 2' (SPECIAL)	FOOT	261	261							
X6015010	REMOVE AND REPLACE CONCRETE HEADWALLS FOR PIPE DRAINS	EACH	2	2							
X7010216	TRAFFIC CONTROL AND PROTECTION, (SPECIAL)	LSUM	1	1							
X7010222	TRAFFIC CONTROL AND PROTECTION, STANDARD BLR 21 (SPECIAL)	LSUM	1	1							
X7010234	TRAFFIC CONTROL AND PROTECTION, STANDARD 701701, SPECIAL	LSUM	1		1						
*X8250091	COMBINATION LIGHTING CONTROLLER	EACH	2								2
*Z0010688	CAMERA MOUNTING ASSEMBLY	EACH	11			4	3	4			
Z0013798	CONSTRUCTION LAYOUT	LSUM	1	1							
Z0023500	FILLING EXISTING CULVERTS	CU YD	39.4	39.4							

* SPECIALTY ITEM

REV. 1-9-2017

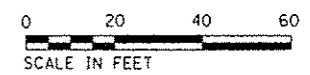
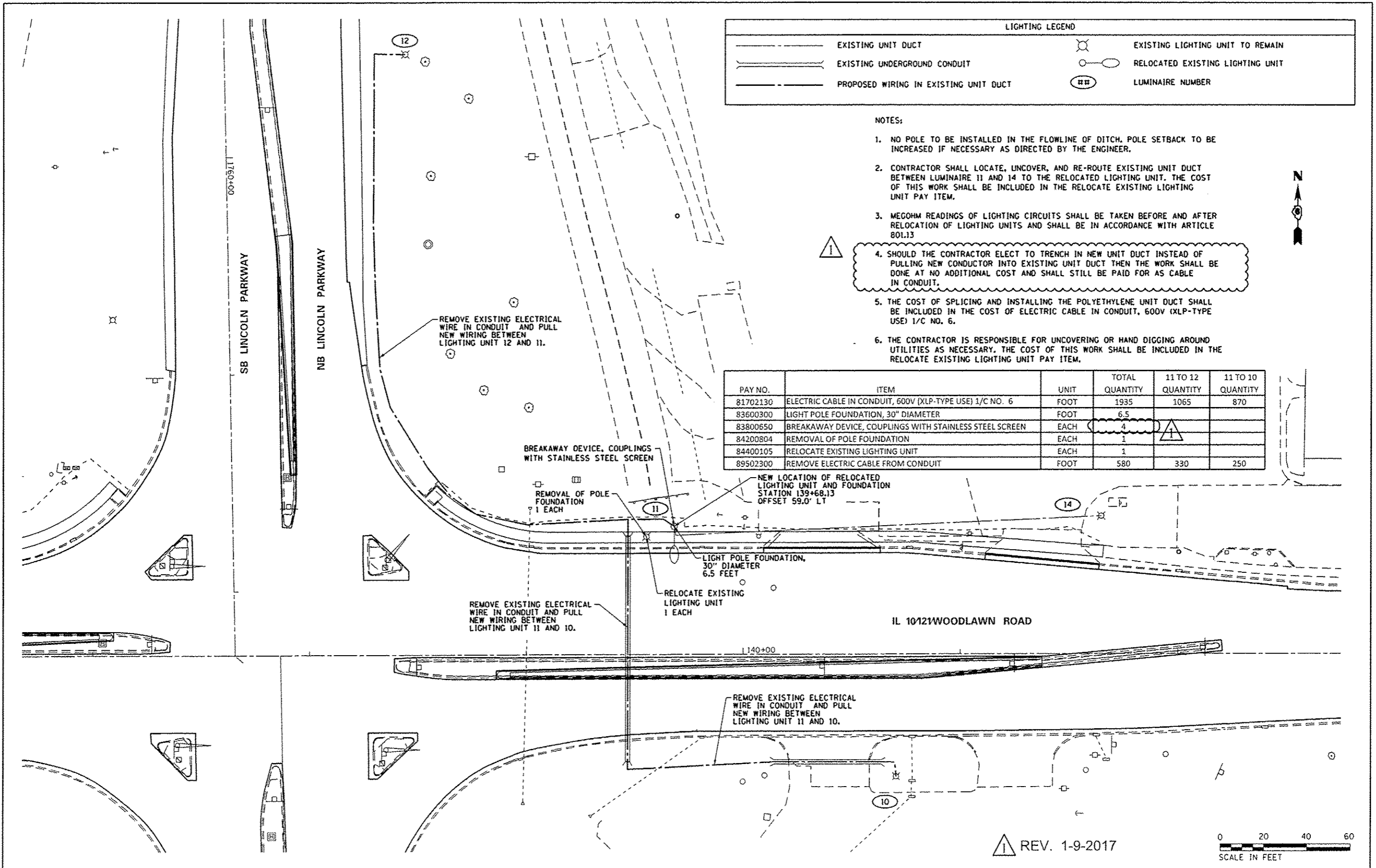
FILE NAME =	USER NAME = whitingme	DESIGNED -	REVISED -	STATE OF ILLINOIS DEPARTMENT OF TRANSPORTATION	SUMMARY OF QUANTITIES				F.A.U. RTE.	SECTION	COUNTY	TOTAL SHEETS	SHEET NO.
Summary of Quantities	PLOT SCALE = 1/8" = 100.0000' / in.	CHECKED -	REVISED -						7706	*	LOGAN	343	15
	PLOT DATE = 10/21/2016	DATE -	REVISED -		SCALE:	SHEET	OF	SHEETS	STA.	TO STA.	ILLINOIS FED. AID PROJECT		
											CONTRACT NO. 72E02		

LIGHTING LEGEND			
	EXISTING UNIT DUCT		EXISTING LIGHTING UNIT TO REMAIN
	EXISTING UNDERGROUND CONDUIT		RELOCATED EXISTING LIGHTING UNIT
	PROPOSED WIRING IN EXISTING UNIT DUCT		LUMINAIRE NUMBER

NOTES:

- NO POLE TO BE INSTALLED IN THE FLOWLINE OF DITCH. POLE SETBACK TO BE INCREASED IF NECESSARY AS DIRECTED BY THE ENGINEER.
- CONTRACTOR SHALL LOCATE, UNCOVER, AND RE-ROUTE EXISTING UNIT DUCT BETWEEN LUMINAIRE 11 AND 14 TO THE RELOCATED LIGHTING UNIT. THE COST OF THIS WORK SHALL BE INCLUDED IN THE RELOCATE EXISTING LIGHTING UNIT PAY ITEM.
- MEG OHM READINGS OF LIGHTING CIRCUITS SHALL BE TAKEN BEFORE AND AFTER RELOCATION OF LIGHTING UNITS AND SHALL BE IN ACCORDANCE WITH ARTICLE 801.13
- SHOULD THE CONTRACTOR ELECT TO TRENCH IN NEW UNIT DUCT INSTEAD OF PULLING NEW CONDUCTOR INTO EXISTING UNIT DUCT THEN THE WORK SHALL BE DONE AT NO ADDITIONAL COST AND SHALL STILL BE PAID FOR AS CABLE IN CONDUIT.
- THE COST OF SPLICING AND INSTALLING THE POLYETHYLENE UNIT DUCT SHALL BE INCLUDED IN THE COST OF ELECTRIC CABLE IN CONDUIT, 600V (XLP-TYPE USE) 1/C NO. 6.
- THE CONTRACTOR IS RESPONSIBLE FOR UNCOVERING OR HAND DIGGING AROUND UTILITIES AS NECESSARY. THE COST OF THIS WORK SHALL BE INCLUDED IN THE RELOCATE EXISTING LIGHTING UNIT PAY ITEM.

PAY NO.	ITEM	UNIT	TOTAL QUANTITY	11 TO 12 QUANTITY	11 TO 10 QUANTITY
81702130	ELECTRIC CABLE IN CONDUIT, 600V (XLP-TYPE USE) 1/C NO. 6	FOOT	1935	1065	870
83600300	LIGHT POLE FOUNDATION, 30" DIAMETER	FOOT	6.5		
83800650	BREAKAWAY DEVICE, COUPLINGS WITH STAINLESS STEEL SCREEN	EACH	4		
84200804	REMOVAL OF POLE FOUNDATION	EACH	1		
84400105	RELOCATE EXISTING LIGHTING UNIT	EACH	1		
89502300	REMOVE ELECTRIC CABLE FROM CONDUIT	FOOT	580	330	250



REV. 1-9-2017

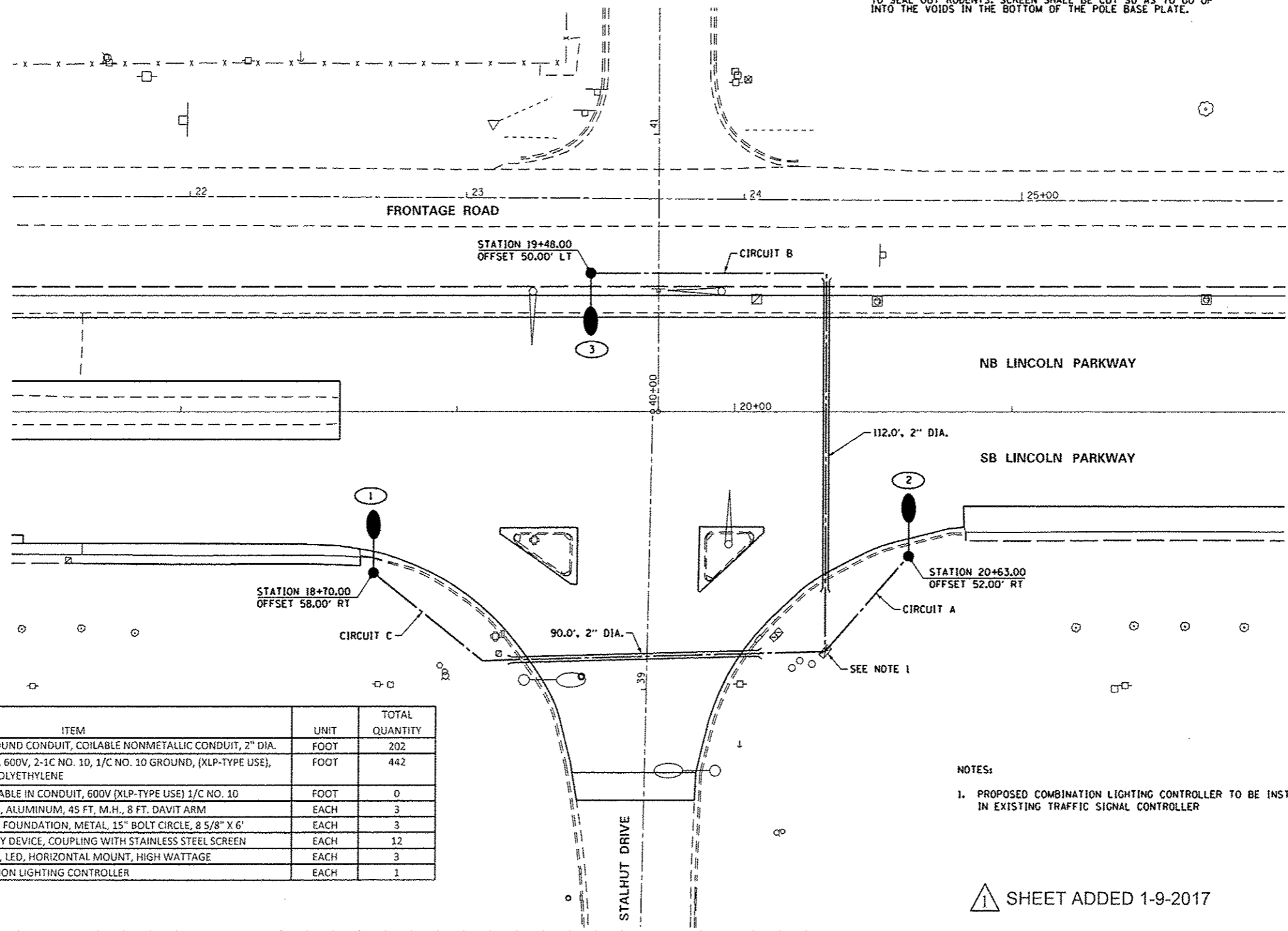
FILE NAME : p:\11084E\BID\INTEG\Illinois\go-pw\1001\Documents\1001\Offices\District 6\Projects\1067	USER NAME : whillinge	DESIGNED : DRANNO	REVISED : REVISION	STATE OF ILLINOIS DEPARTMENT OF TRANSPORTATION		LIGHTING RELOCATION	F.A.U. RTE. 7706	SECTION	COUNTY LOGAN	TOTAL SHEETS 343	SHEET NO. 264
Lighting 01	PLOT SCALE : 1/8" = 1'-0"	CHECKED : DATE	REVISED : DATE				SCALE:	SHEET OF SHEETS	STA. TO STA.	ILLINOIS FED. AID PROJECT CONTRACT NO. 72E02	

1221RS-6, MED & (23) RS-5

LIGHTING LEGEND	
	UNDERGROUND CONDUIT, COILABLE NONMETALLIC CONDUIT, SCHEDULE 80, SIZE AS INDICATED ON PLANS
	UNIT DUCT, 600V, 2-1C NO. 10, 1/C NO. 10 GROUND, (XLP-TYPE USE), 3/4" DIA. POLYETHYLENE
	LUMINAIRE NUMBER
	EXISTING PRIVATELY OWNED LIGHT POLE TO REMAIN IN PLACE
	LIGHT POLE, ALUMINUM, 45' M.H., 8' DAVIT ARM 120V HIGH WATTAGE HORIZONTAL MOUNT, LED LUMINAIRE, TYPE IV, WITH 15" B.C. ON 8-5/8" X 6" METAL FOUNDATION
	COMBINATION LIGHTING CONTROLLER, 120 VOLT, 20 AMP

GENERAL NOTES

1. AT STALHUT THE CONTRACTOR SHALL TERMINATE UNIT DUCT FOR THE BRANCH LIGHTING CIRCUITS IN THE EXISTING TRAFFIC SIGNAL CONTROLLER OR BORE HOLES IN THE CONCRETE HANDHOLE ADJACENT TO THE TRAFFIC SIGNAL CONTROLLER AND PATCH HOLES. THIS WORK SHALL BE AS DIRECTED BY THE ENGINEER AND SHALL BE PAID FOR AS UNIT DUCT, 600V, 2-1C NO. 10, 1/C NO. 10 GROUND, (XLP-TYPE USE), 3/4" DIA. POLYETHYLENE.
2. LIGHT POLES SHALL HAVE STAINLESS STEEL SCREEN INSTALLED TO SEAL OUT RODENTS. SCREEN SHALL BE CUT SO AS TO GO UP INTO THE VOIDS IN THE BOTTOM OF THE POLE BASE PLATE.



PAY NO.	ITEM	UNIT	TOTAL QUANTITY
81028750	UNDERGROUND CONDUIT, COILABLE NONMETALLIC CONDUIT, 2" DIA.	FOOT	202
81603010	UNIT DUCT, 600V, 2-1C NO. 10, 1/C NO. 10 GROUND, (XLP-TYPE USE), 3/4" DIA. POLYETHYLENE	FOOT	442
81702110	ELECTRIC CABLE IN CONDUIT, 600V (XLP-TYPE USE) 1/C NO. 10	FOOT	0
83003300	LIGHT POLE, ALUMINUM, 45 FT. M.H., 8 FT. DAVIT ARM	EACH	3
83600356	LIGHT POLE FOUNDATION, METAL, 15" BOLT CIRCLE, 8 5/8" X 6"	EACH	3
83800650	BREAKAWAY DEVICE, COUPLING WITH STAINLESS STEEL SCREEN	EACH	12
X1400095	LUMINAIRE, LED, HORIZONTAL MOUNT, HIGH WATTAGE	EACH	3
X8250091	COMBINATION LIGHTING CONTROLLER	EACH	1

- NOTES:
1. PROPOSED COMBINATION LIGHTING CONTROLLER TO BE INSTALLED IN EXISTING TRAFFIC SIGNAL CONTROLLER



SHEET ADDED 1-9-2017

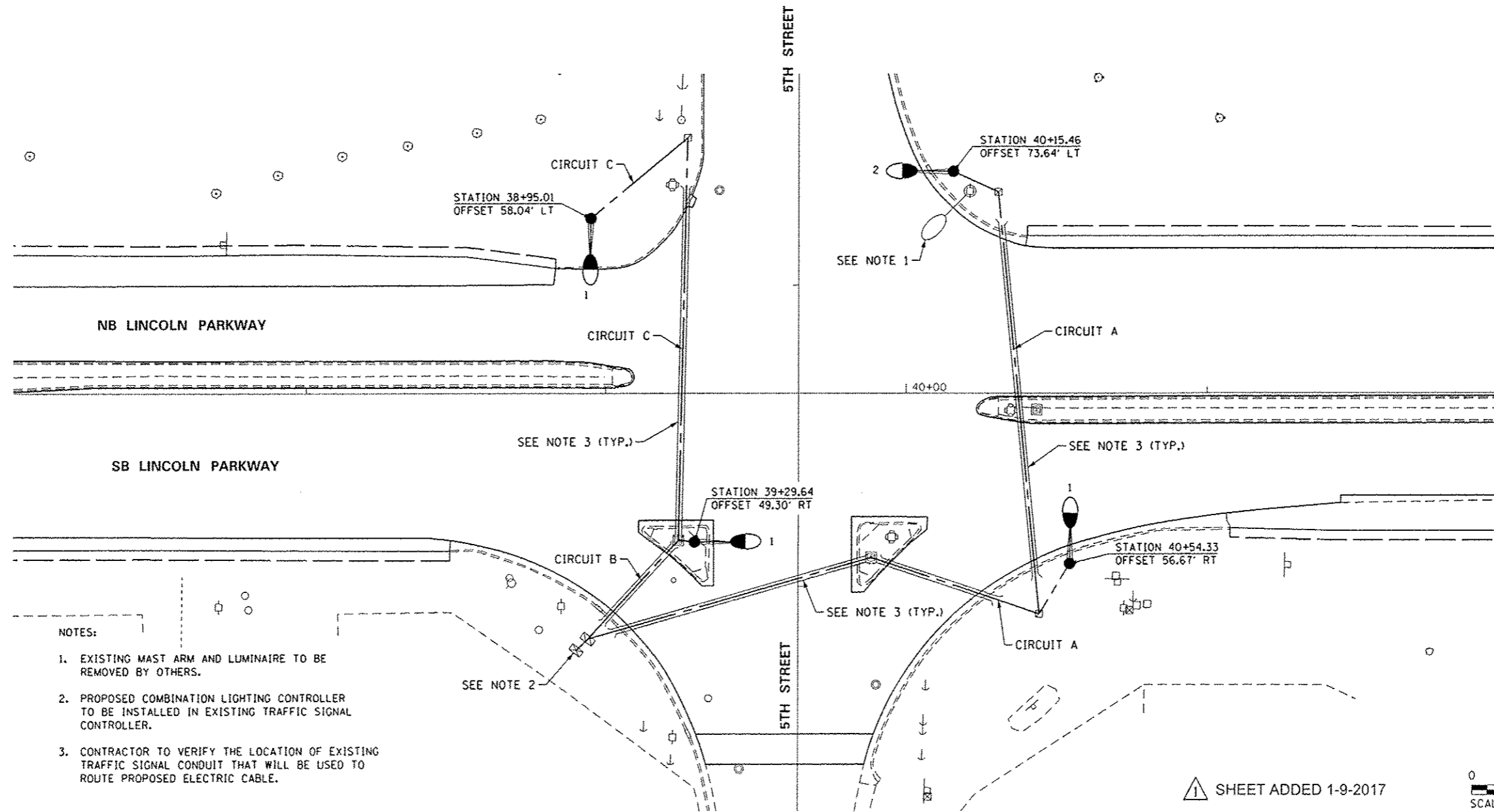
FILE NAME: p:\111084EBID\INTEG... 81 Stalhut Drive	USER NAME: whitingm PLOT SCALE: 1/8" = 1'-0" PLOT DATE: 1/6/2017	DESIGNED: [blank] CHECKED: [blank] DATE: [blank]	REVISED: [blank] REVISED: [blank] REVISED: [blank]	STATE OF ILLINOIS DEPARTMENT OF TRANSPORTATION	PROPOSED LIGHTING STALHUT DRIVE/LINCOLN PARKWAY	F.A.U. RTE. 1706 SCALE: [blank] SHEET OF SHEETS STA. TO STA.	SECTION [blank] COUNTY LOGAN CONTRACT NO. 72E02	TOTAL SHEETS 343 SHEET NO. 264A	ILLINOIS FED. AID PROJECT
---	--	--	--	---	--	---	---	------------------------------------	---------------------------

(22)RS-6, MED & (23) RS-5

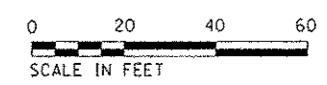


LIGHTING LEGEND			
	EXISTING CONDUIT TO REMAIN IN PLACE		120V HIGH WATTAGE HORIZONTAL MOUNT, LED LUMINAIRE, TYPE IV TO BE INSTALLED ON EXISTING TRAFFIC SIGNAL MAST ARM STRUCTURE
	ELECTRIC CABLE IN CONDUIT, 600V (XLP-TYPE USE), 1/C NO. 10		COMBINATION LIGHTING CONTROLLER, 120 VOLT, 20 AMP
	EXISTING UTILITY POLE, MAST ARM, AND LUMINAIRE		EXISTING HANDHOLE TO REMAIN IN PLACE

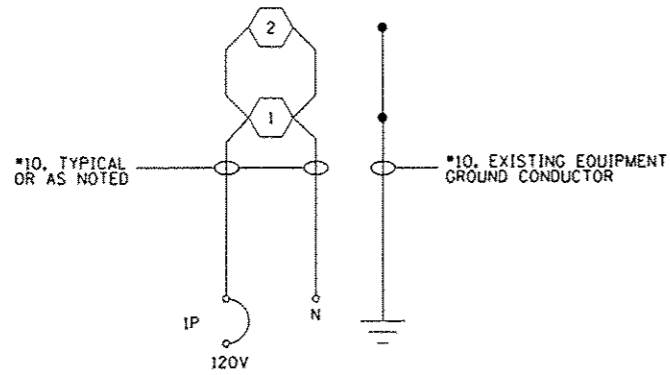
PAY NO.	ITEM	UNIT	TOTAL QUANTITY
81028750	UNDERGROUND CONDUIT, COILABLE NONMETALLIC CONDUIT, 2" DIA.	FOOT	0
81603010	UNIT DUCT, 600V, 2-1C NO. 10, 1/C NO. 10 GROUND, (XLP-TYPE USE), 3/4" DIA. POLYETHYLENE	FOOT	0
81702110	ELECTRIC CABLE IN CONDUIT, 600V (XLP-TYPE USE) 1/C NO. 10	FOOT	1300
83003300	LIGHT POLE, ALUMINUM, 45 FT. M.H., 8 FT. DAVIT ARM	EACH	0
83600356	LIGHT POLE FOUNDATION, METAL, 15" BOLT CIRCLE, 8 5/8" X 6"	EACH	0
83800650	BREAKAWAY DEVICE, COUPLING WITH STAINLESS STEEL SCREEN	EACH	0
X1400095	LUMINAIRE, LED, HORIZONTAL MOUNT, HIGH WATTAGE	EACH	4
X8250091	COMBINATION LIGHTING CONTROLLER	EACH	1



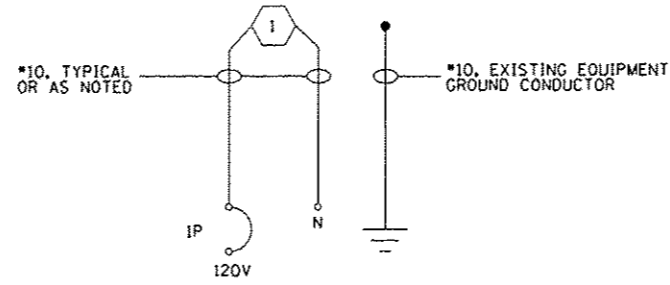
1 SHEET ADDED 1-9-2017



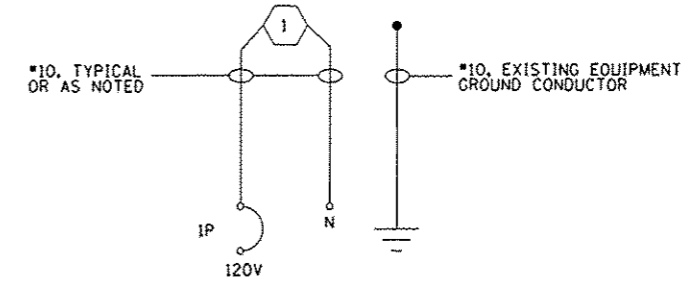
FILE NAME : 02 5th Street	USER NAME : whistlingm	DESIGNED -	REVISED -	STATE OF ILLINOIS DEPARTMENT OF TRANSPORTATION	PROPOSED LIGHTING 5TH STREET/LINCOLN PARKWAY		F.A.U. RTE. : 7706	SECTION : *	COUNTY : LOGAN	TOTAL SHEETS : 343	SHEET NO. : 264B	
		CHECKED -	REVISED -		SCALE:	SHEET OF SHEETS	STA. TO STA.	ILLINOIS FED. AID PROJECT CONTRACT NO. 72E02				
		DATE -	REVISED -		(22)RS-6, MED & (23) RS-5							



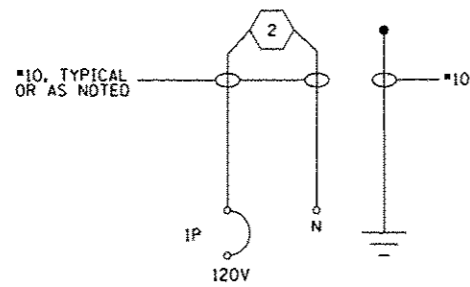
CIRCUIT A - 5TH STREET AND LINCOLN PARKWAY
PROPOSED COMBINATION LIGHTING CONTROLLER



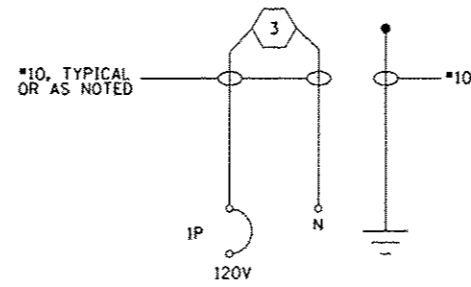
CIRCUIT B - 5TH STREET AND LINCOLN PARKWAY
PROPOSED COMBINATION LIGHTING CONTROLLER



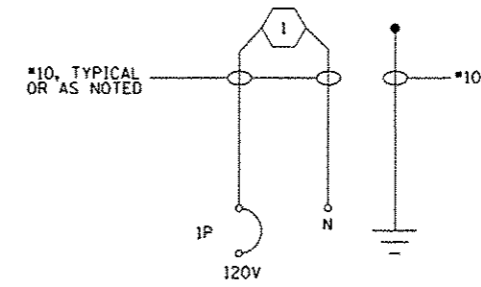
CIRCUIT C - 5TH STREET AND LINCOLN PARKWAY
PROPOSED COMBINATION LIGHTING CONTROLLER



CIRCUIT A - STALHUT DRIVE AND LINCOLN PARKWAY
PROPOSED COMBINATION LIGHTING CONTROLLER




CIRCUIT B - STALHUT DRIVE AND LINCOLN PARKWAY
PROPOSED COMBINATION LIGHTING CONTROLLER




CIRCUIT C - STALHUT DRIVE AND LINCOLN PARKWAY
PROPOSED COMBINATION LIGHTING CONTROLLER

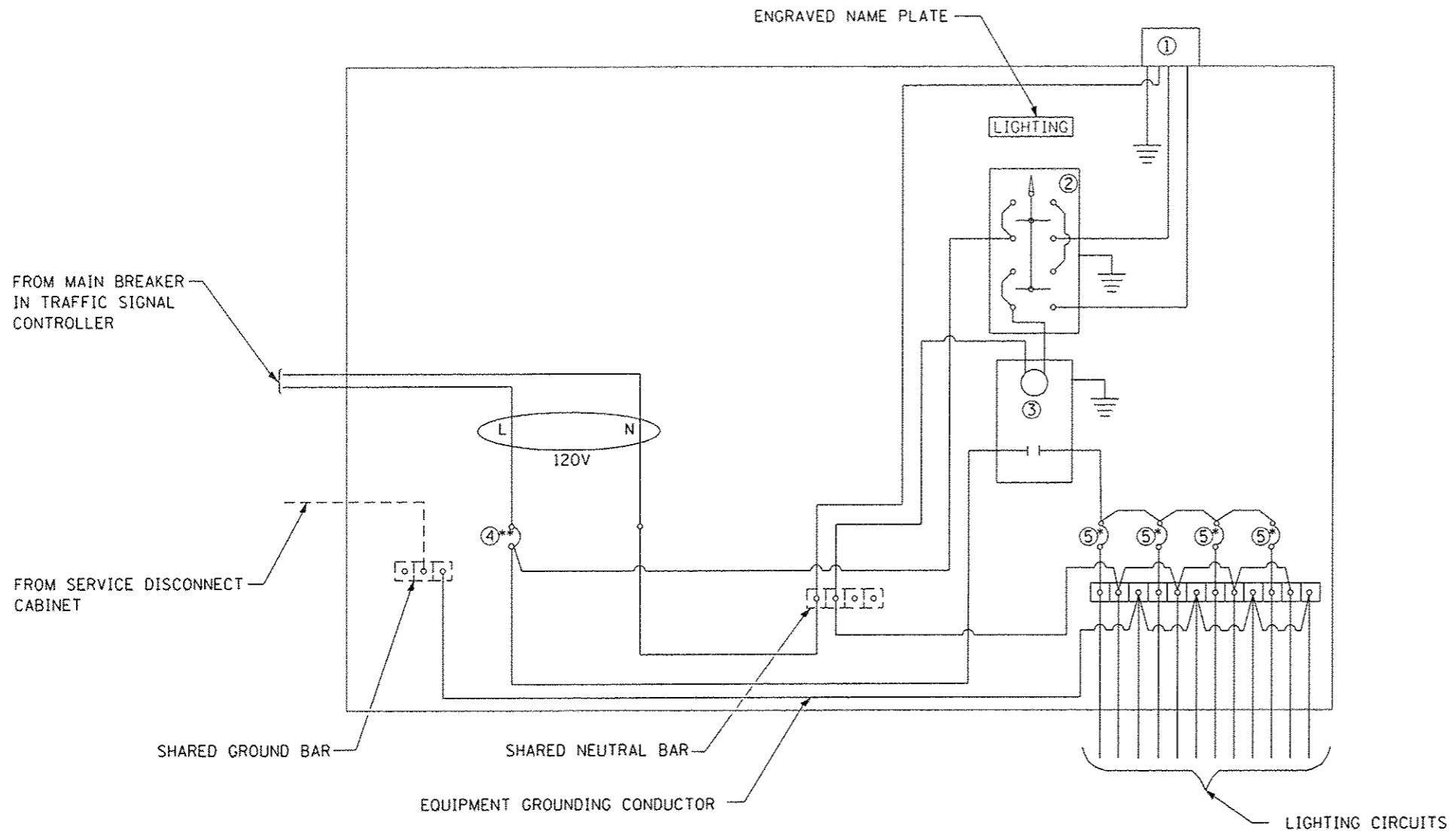
NOTES:

1. ALL NECESSARY REVISIONS TO THE WIRING SHOWN ON THIS SHEET SHALL BE MADE AT NO ADDITIONAL COST TO THE DEPARTMENT AND TO THE SATISFACTION OF THE ENGINEER.

 PROPOSED LUMINAIRE, LED

 SHEET ADDED 1-9-2017

FILE NAME :	USER NAME : whitingm	DESIGNED -	REVISED -	STATE OF ILLINOIS DEPARTMENT OF TRANSPORTATION	LIGHTING DETAILS CIRCUIT DIAGRAMS		F.A.U. RTE.	SECTION	COUNTY	TOTAL SHEETS	SHEET NO.	
6:\NILES\BID\INTEC\illinois.gov\FWID01\00	6:\NILES\BID\INTEC\illinois.gov\FWID01\00	6:\NILES\BID\INTEC\illinois.gov\FWID01\00	6:\NILES\BID\INTEC\illinois.gov\FWID01\00				7706		LOGAN	343	264C	
93 Circuit Diagrams	PLOT SCALE = 48,0000 / 1 in.	CHECKED -	REVISED -		SCALE:	SHEET	OF	SHEETS	STA.	TO	STA.	ILLINOIS FEO. AID PROJECT
	PLOT DATE = 1/6/2017	DATE -	REVISED -		CONTRACT NO. 72E02							



LEGEND

- Ground connected to shared ground bar.
- Indicates shared with traffic signal controller equipment.
- ① Photocell with integral surge arrester.
- ② HAND-OFF-AUTO selector switch.
- ③ 30 amp, 1 pole electrically held contactor.
- ④ 20 amp, 1 pole, circuit breaker
- ⑤ 15 amp, 1 pole, branch breaker
- * Quantity of branch breakers shall depend on the combination lighting circuit diagram or as directed by the engineer.
- ** Size larger as needed.

COMBINATION LIGHTING CONTROLLER WIRING DIAGRAM

GENERAL NOTES

- All control installation components shall be U.L. listed.
- All wiring shall be neatly dressed, identified by tags, and supported.
- The circuit breaker shall be clearly labeled for lighting according to Article 1068.01(f) of the Standard Specifications.
- Install under eave photocell on traffic signal controller cabinet per Article 1068.01(e)(2) of the Standard Specifications.
- All lighting equipmt shall be installed on a side mounted insulated subpanel per Article 1068.01(e)(9) of the Standard Specifications on the lower right hand side of the traffic signal controller or as directed by the engineer.
- Provide an engraved stainless steel nameplate on the sub panel reading "LIGHTING".

SHEET ADDED 1-9-2017

FILE NAME :	USER NAME : whittingma	DESIGNED -	REVISED -	STATE OF ILLINOIS DEPARTMENT OF TRANSPORTATION	LIGHTING DETAILS COMBINATION LIGHTING CONTROLLER		F.A.J. RTE.	SECTION	COUNTY	TOTAL SHEETS	SHEET NO.
p:\11084E81D\INTEG\Illinois.gov\1007\Docu	uments\DOT Offices\District 6\Projects\067	DRAWN	REVISED		7706		LOGAN	343	2640		
04 Combination Lighting Controller Detail	PLOT SCALE : 48.9888 / in.	CHECKED -	REVISED -		SCALE: SHEET OF SHEETS STA. TO STA.		ILLINOIS FED. AID PROJECT		CONTRACT NO. T2E02		
	PLOT DATE : 1/6/2017	DATE -	REVISED -								