

**STATE OF ILLINOIS**  
**DEPARTMENT OF TRANSPORTATION**  
**DIVISION OF HIGHWAYS**  
**PROPOSED**  
**CONTRACT MAINTENANCE**

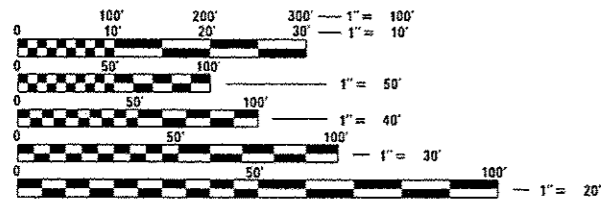
**FAI 55 (I 55)**  
**SECTION D6 PATCHING 2017-3**

**LOGAN COUNTY**

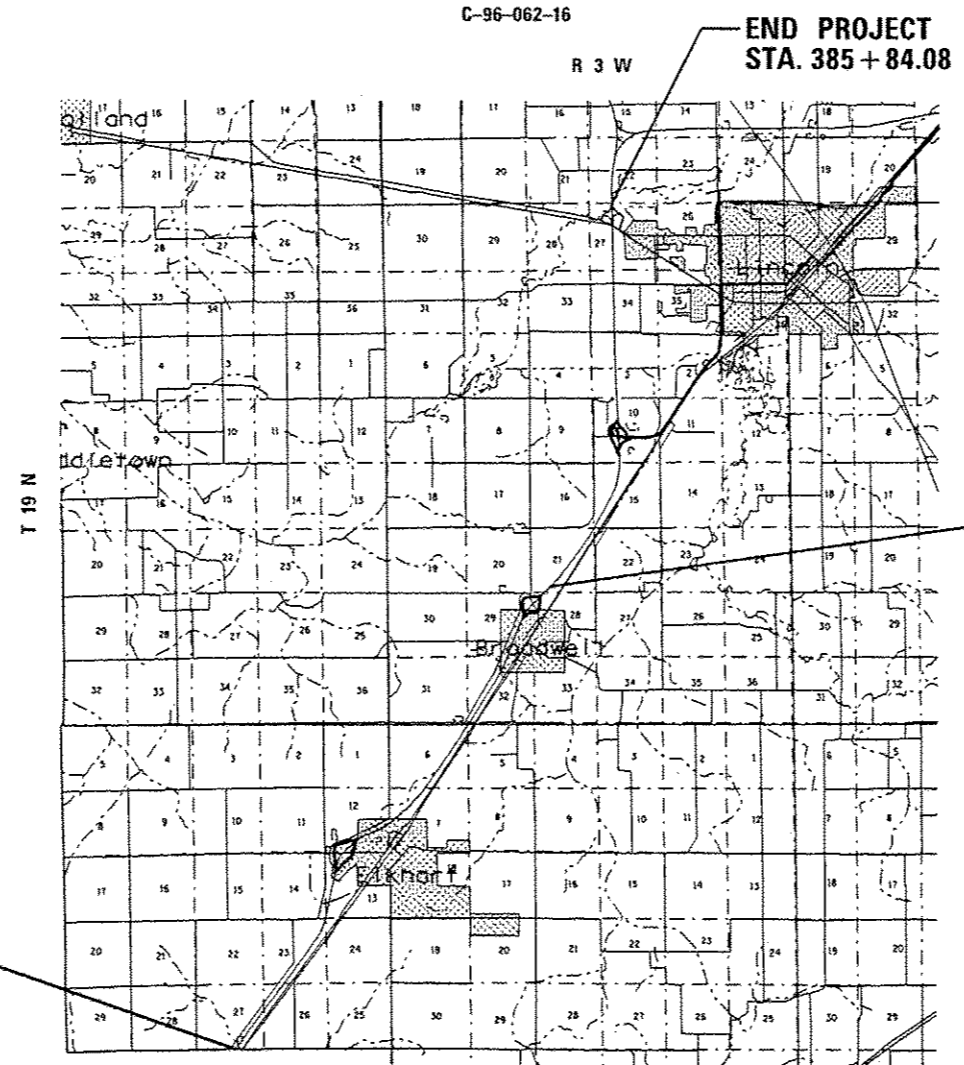
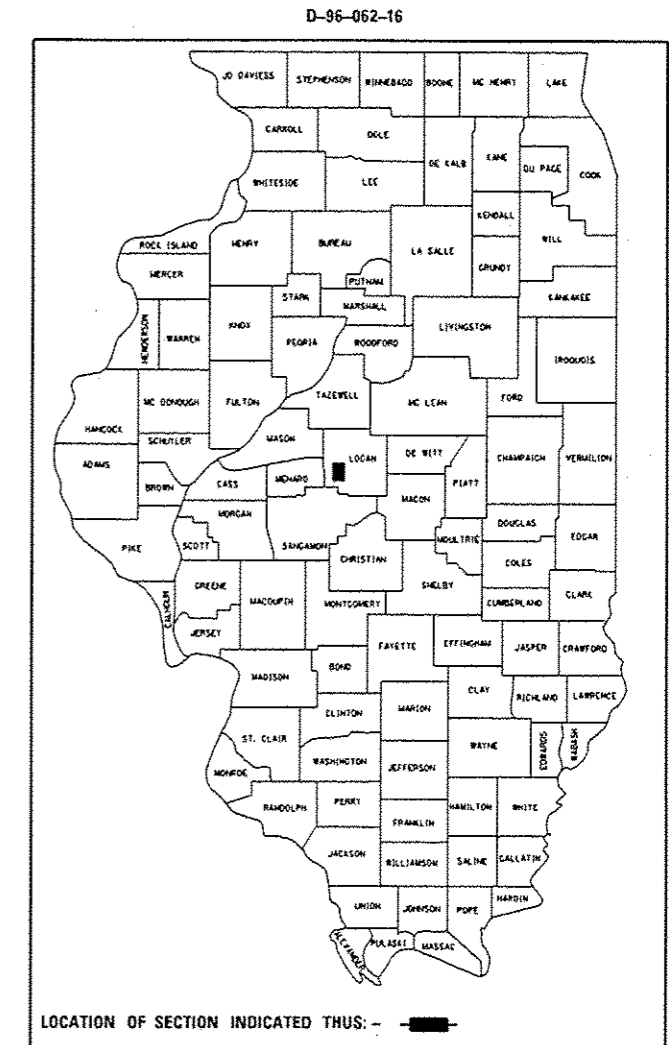
F.A.I. RTE.	SECTION	COUNTY	TOTAL SHEETS	SHEET NO.
55	D6 PATCHING 2017-3	LOGAN	6	1
FED. ROAD DIST. NO.		ILLINOIS	CONTRACT NO. 72J24	

FOR INDEX OF SHEETS, SEE SHEET NO. 2

A.D.T. = 18,200 (5,400)



FULL SIZE PLANS HAVE BEEN PREPARED USING STANDARD ENGINEERING SCALES. REDUCED SIZED PLANS WILL NOT CONFORM TO STANDARD SCALES. IN MAKING MEASUREMENTS ON REDUCED PLANS, THE ABOVE SCALES MAY BE USED.



J.U.L.I.E.  
 JOINT UTILITY LOCATION INFORMATION FOR EXCAVATION  
 1-800-892-0123  
 OR 811

PLAN AND CONTRACT TECHNICIAN  
 TIMOTHY SHARP (217)782-7743

CONTRACT NO. 72J24

BEGIN PROJECT  
 STA. 425 + 34.80

STA. EQ. 905 + 00 bk  
 = 46 + 76.96 ah

GROSS LENGTH = 82,348.00 FT. = 15.600 MILES

STATE OF ILLINOIS  
 DEPARTMENT OF TRANSPORTATION  
 DIVISION OF HIGHWAYS

SUBMITTED 14 November 2016

*[Signature]*  
 DEPUTY DIRECTOR OF HIGHWAYS, REGION ENGINEER

Dec 9 2016  
*Maurice M. Addis, P.E.*  
 ENGINEER OF DESIGN AND ENVIRONMENT

Dec 9 2016  
*[Signature]*  
 DIRECTOR OF HIGHWAYS, CHIEF ENGINEER

**PRINTED BY THE AUTHORITY  
 OF THE STATE OF ILLINOIS**

**INDEX**

SHEET NO.	DESCRIPTION
1.	COVER SHEET
2.	INDEX, STANDARDS, SIGNATURES
3.	SUMMARY OF QUANTITIES
4.	SCHEDULES
5.	LOCATION MAP
6.	TYPICAL SECTIONS

**STANDARDS**

STANDARD NO.	DESCRIPTION
442001-04	CLASS A PATCHES
701101-05	OFF-RD OPERATIONS, MULTILANE, 15' TO 24" FROM PAVEMENT EDGE
701106-02	OFF-RD OPERATIONS, MULTILANE, MORE THAN 15' AWAY
701400-09	APPROACH TO LANE CLOSURE, FREEWAY/EXPRESSWAY
701401-10	LANE CLOSURE, FREEWAY/EXPRESSWAY
701411-09	LANE CLOSURE, MULTILANE, AT ENTRANCE OR EXIT RAMP, FOR SPEEDS >45 MPH
701446-08	TWO LANE CLOSURE, FREEWAY/EXPRESSWAY
701456-04	PARTIAL EXIT RAMP CLOSURE FREEWAY/EXPRESSWAY
701901-06	TRAFFIC CONTROL DEVICES

<b>STATE OF ILLINOIS DEPARTMENT OF TRANSPORTATION DIVISION OF HIGHWAYS DISTRICT 6</b>	
EXAMINED	<u>October 21</u> 20 <u>16</u> <i>John C. Wagoner</i> ENGINEER OF OPERATIONS
EXAMINED	<u>October 3</u> 20 <u>16</u> <i>Ron Duchambeau</i> ENGINEER OF PROJECT IMPLEMENTATION
EXAMINED	<u>October 12</u> 20 <u>16</u> <i>Jeffrey P. Meyer</i> ENGINEER OF PROGRAM DEVELOPMENT

0-01623-6008

100% STATE

ROADWAY

0005

RURAL

CODE NO.	ITEM	UNIT	TOTAL QUANTITY	
44200610	CLASS A PATCHES, TYPE II, 13 INCH	SQ YD	365.3	365.3
44200612	CLASS A PATCHES, TYPE III, 13 INCH	SQ YD	192.0	192.0
44200614	CLASS A PATCHES, TYPE IV, 13 INCH	SQ YD	1,400.0	1,400.0
44213000	PATCHING REINFORCEMENT	SQ YD	1,957.3	1,957.3
44213200	SAW CUTS	FOOT	6,824.0	6,824.0
44213204	TIE BARS 3/4"	EACH	625	625
67100100	MOBILIZATION	L SUM	1	1
70100420	TRAFFIC CONTROL AND PROTECTION, STANDARD 701411	EACH	12	12
70100800	TRAFFIC CONTROL AND PROTECTION, STANDARD 701401	L SUM	1	1
70100815	TRAFFIC CONTROL AND PROTECTION, STANDARD 701446	L SUM	1	1
70100825	TRAFFIC CONTROL AND PROTECTION, STANDARD 701456	L SUM	1	1
70106800	CHANGEABLE MESSAGE SIGN	CAL MO	2	2
70200100	NIGHT WORK ZONE LIGHTING	L SUM	1	1
X4820110	HOT-MIX ASPHALT SHOULDER REMOVAL AND REPLACEMENT (SPECIAL)	SQ YD	100	100
X7010410	SPEED DISPLAY TRAILER	CAL MO	2	2

15

FILE NAME *	USER NAME * aharatd	DESIGNED - DMS	REVISED -
S:\CONTRMAINT\CAD\72J24 1 -55 Class A Patching Logan County\PLANS\3 06-72J24-500.dwg		DRAWN - DMS	REVISED -
	PLOT SCALE * 40.0000 "/ in.	CHECKED -	REVISED -
Default	PLOT DATE * 11/3/2016	DATE - 5-13-2013	REVISED -

**STATE OF ILLINOIS  
DEPARTMENT OF TRANSPORTATION**

**SUMMARY OF QUANTITIES**

SCALE: \_\_\_\_\_ SHEET \_\_\_\_ OF \_\_\_\_ SHEETS STA. \_\_\_\_\_ TO STA. \_\_\_\_\_

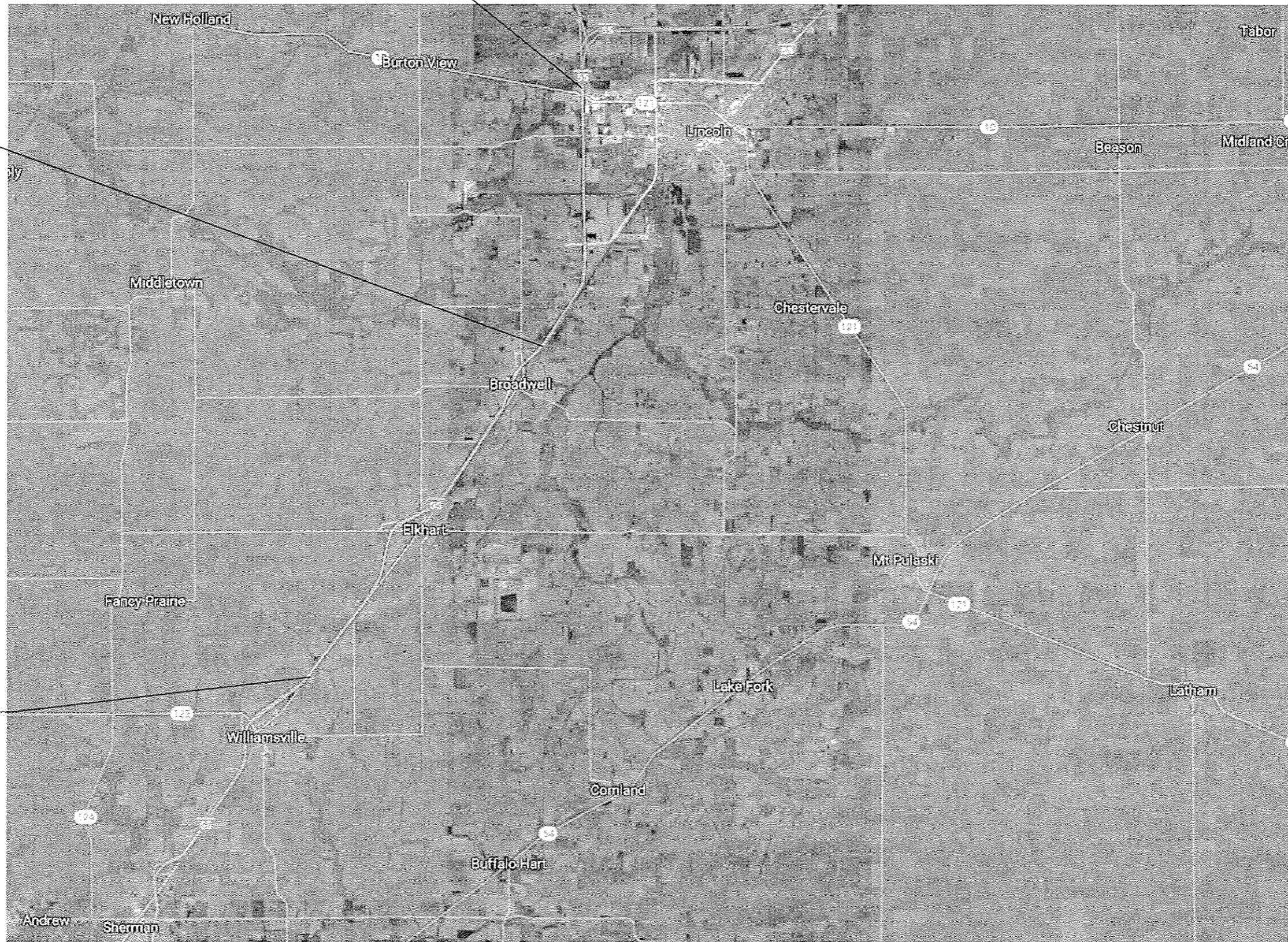
P.A.T. RTE.	SECTION	COUNTY	TOTAL SHEETS	SHEET NO.
55	06 PATCHING 2017-3	SANCAMON	6	3
			CONTRACT NO. 72J24	
ILLINOIS FED. AID PROJECT				



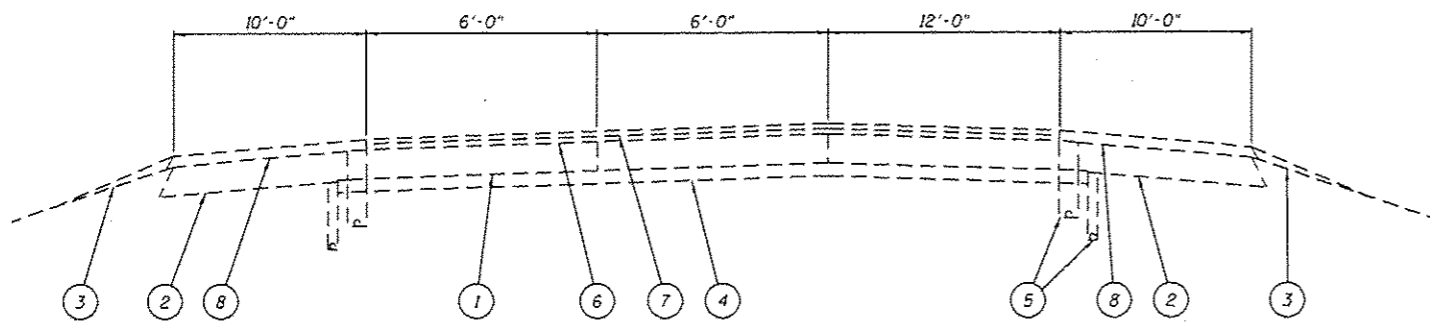
END PROJECT  
STA. 385+84.08

STATION EQ.  
905+00 bk=  
46+76.96 ah

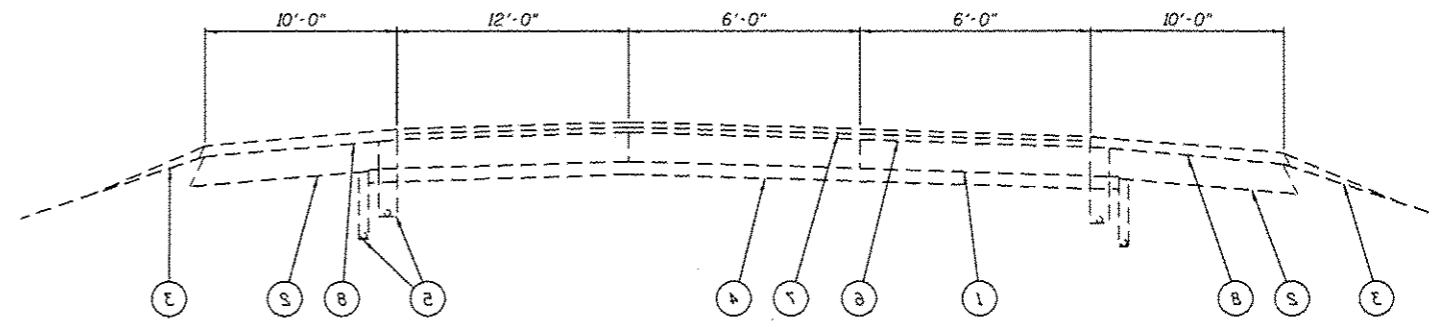
BEGIN PROJECT  
STA. 425+34.80



FILE NAME :	USER NAME : shprtd	DESIGNED -	REVISED -	<b>STATE OF ILLINOIS DEPARTMENT OF TRANSPORTATION</b>	<b>PROJECT LOCATION</b>				F.A.I. RTE.	SECTION	COUNTY	TOTAL SHEETS	SHEET NO.
S:\CONTRACTS\CAD\72J24 1 -55 Class A Patching Logan County\PLANS\5 06-72J24-proj\DR\blondgn	DMS	REVISED -	REVISED -						55	D6 PATCHING 2017-3	LOGAN	6	5
Default	PLOT SCALE * 0.420000' / in.	CHECKED -	REVISED -		CONTRACT NO. 72J24				ILLINOIS FED. AID PROJECT				
	PLOT DATE * 11/3/2016	DATE - 5-21-2013	REVISED -		SCALE:	SHEET	OF	SHEETS	STA.	TO STA.			



S.B. FAI-55



22-1A7.B.M

**LEGEND**

- 1 EXIST. CRC PAVEMENT 9"
- 2 EXIST. H.M.A. SHOULDER 9"
- 3 EXIST. AGGREGATE SHOULDER
- 4 EXIST. STABILIZED BASE 4"
- 5 EXIST. PIPE UNDERDRAINS
- 6 EXIST. H.M.A. BINDER COURSE 1 3/4"
- 7 EXIST. H.M.A. SURFACE COURSE 1 1/2"
- 8 EXIST. H.M.A. SHOULDERS 3 1/4"

**STATE OF ILLINOIS  
DEPARTMENT OF TRANSPORTATION**

**TYPICALS**

FILE NAME *	USER NAME * sharpjd	DESIGNED -	REVISED -	<b>STATE OF ILLINOIS DEPARTMENT OF TRANSPORTATION</b>	<b>TYPICALS</b>		F.A.I. RTE.	SECTION	COUNTY	TOTAL SHEETS	SHEET NO.	
S:\CONTRMAINT\CAD\72J24 1-55 Class A P	atching Logan County\PLANS\6 d6-72J24-typic	DRAWN -	REVISED -				55	D6 PATCHING 2017-3	LOGAN	6	6	
Default	PLOT SCALE * 5.0000 "/ in.	CHECKED -	REVISED -				SCALE: _____ SHEET _____ OF _____ SHEETS STA. _____ TO STA. _____		CONTRACT NO. 72J24		ILLINOIS FED. AID PROJECT	
	PLOT DATE * 9/30/2016	DATE -	REVISED -									