

01-20-2017 LETTING ITEM 131

STATE OF ILLINOIS
DEPARTMENT OF TRANSPORTATION

F.A. RTE.	SECTION	COUNTY	TOTAL SHEETS	SHEET NO.
D7	SEAL COAT 2017-1	COLES	6	1
ILLINOIS CONTRACT NO. 74775				
* FAU 7643, FAS 1668, FAS 1667A				

D-97-039-16

FOR INDEX OF SHEETS, SEE SHEET NO. 2

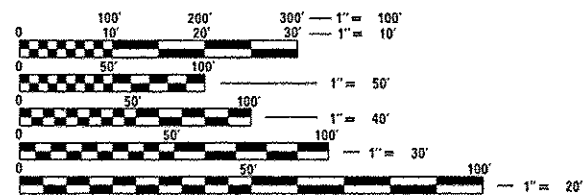
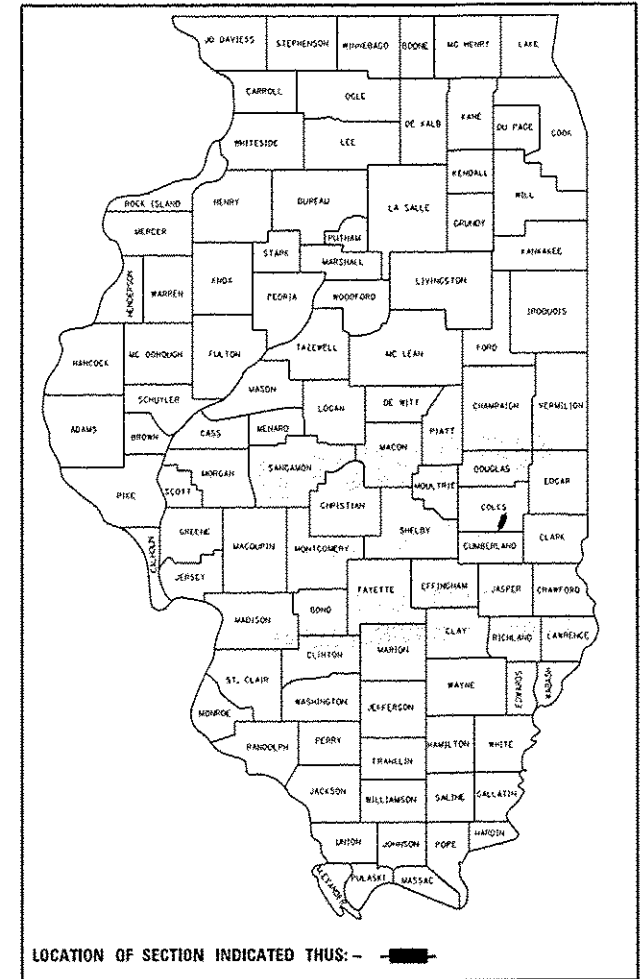
PROPOSED HIGHWAY PLANS

F.A.U. ROUTE 7643, F.A.S. ROUTE 1668,
F.A.S. ROUTE 1667A
SECTION D7 SEAL COAT 2017-1

BIT SURFACE TREATMENT - A2
COLES COUNTY

C-97-070-16

ADT = 2,650 (2014)

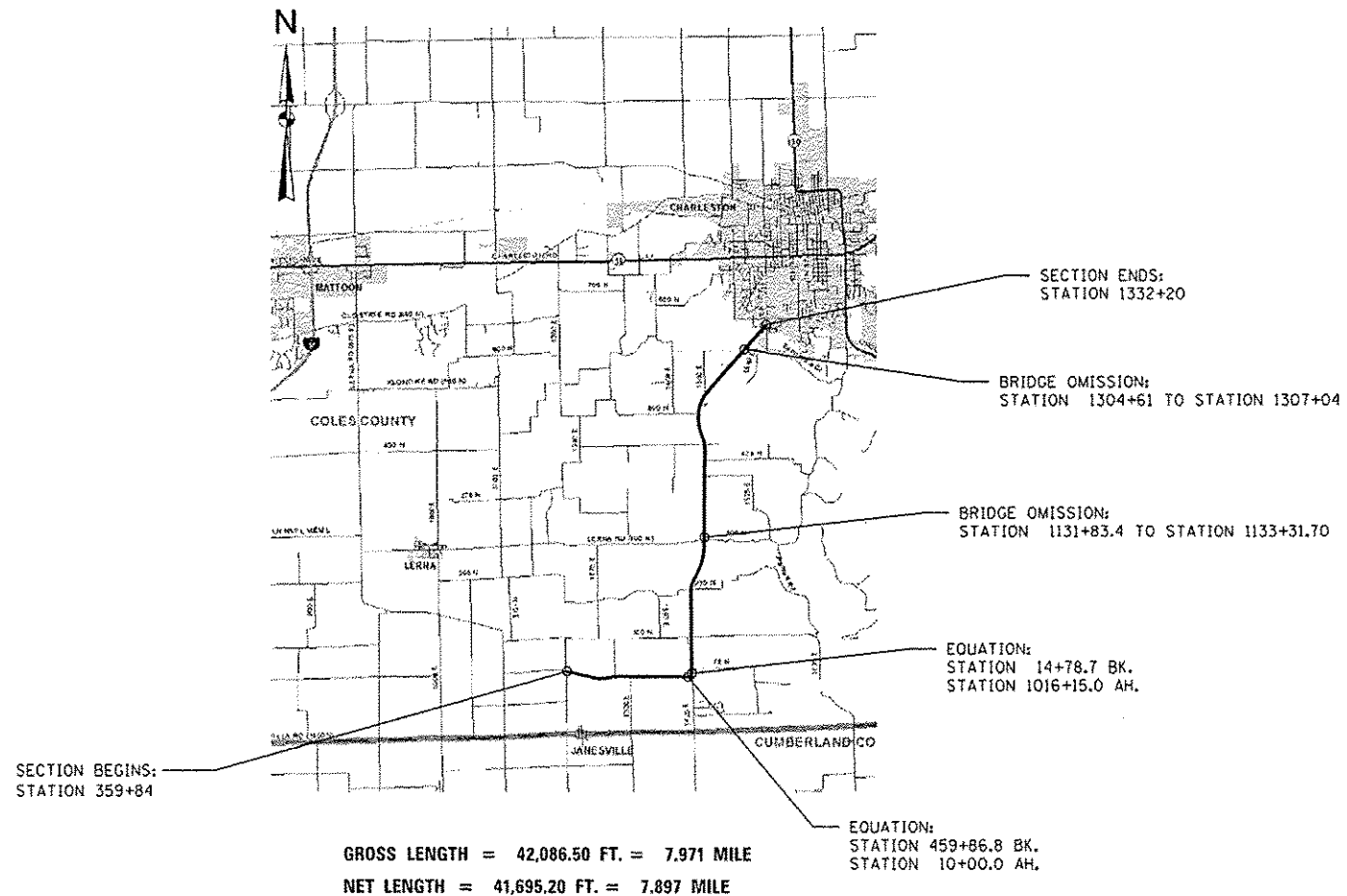


FULL SIZE PLANS HAVE BEEN PREPARED USING STANDARD ENGINEERING SCALES. REDUCED SIZED PLANS WILL NOT CONFORM TO STANDARD SCALES. IN MAKING MEASUREMENTS ON REDUCED PLANS, THE ABOVE SCALES MAY BE USED.

J.U.L.I.E.
JOINT UTILITY LOCATION INFORMATION FOR EXCAVATION
1-800-892-0123
OR 811

MARK DAUGHERTY
ANDREW DETERS

CONTRACT NO. 74775



STATE OF ILLINOIS
DEPARTMENT OF TRANSPORTATION

SUBMITTED *November 4 2016*

Jeffrey M Southwick
REGION FOUR ENGINEER

Dec 9 2016
Maureen M. Addis PE
ENGINEER OF DESIGN AND ENVIRONMENT

Dec 9 2016
Maureen M. Addis
DIRECTOR OF PROGRAM DEVELOPMENT

PRINTED BY THE AUTHORITY
OF THE STATE OF ILLINOIS

INDEX OF SHEETS

SHEET NO.	DESCRIPTION
1	COVER SHEET
2	INDEX OF SHEETS & GENERAL NOTES
3	SUMMARY OF QUANTITIES
4	TYPICAL SECTIONS
5	SCHEDULE OF QUANTITIES
6	LOCATION MAP

THE FOLLOWING STANDARDS ARE A PART OF THESE PLANS
AND ARE INCLUDED FOLLOWING SHEET NUMBER 6

- 701001-02 OFF-ROAD OPERATIONS, 2L, 2W, MORE THAN 15' AWAY
- 701006-05 OFF-ROAD OPERATIONS, 2L, 2W, 15' TO 24" FROM PAVEMENT EDGE
- 701301-04 LANE CLOSURE, 2L, 2W, SHORT TIME OPERATIONS
- 701306-03 LANE CLOSURE, 2L, 2W, SLOW MOVING OPERATIONS DAY ONLY, FOR SPEEDS >= 45 MPH
- 701311-03 LANE CLOSURE, 2L, 2W, MOVING OPERATIONS - DAY ONLY
- 701901-06 TRAFFIC CONTROL DEVICES
- 780001-05 TYPICAL PAVEMENT MARKINGS

GENERAL NOTES

THIS SECTION SHALL BE CONSTRUCTED IN ACCORDANCE WITH THE PLANS; THE "STANDARD SPECIFICATIONS FOR ROAD AND BRIDGE CONSTRUCTION" ADOPTED APRIL 1, 2016; THE "SUPPLEMENTAL SPECIFICATIONS AND RECURRING SPECIAL PROVISIONS" INDICATED ON THE CHECK SHEET, AND "THE SPECIAL PROVISIONS" INCLUDED IN THIS PROPOSAL.

THE PROPOSED WORK IS LOCATED ON LINCOLN HIGHWAY ROAD (FAU 7643, FAS 1668, FAS 1667A) IN COLES COUNTY FROM THE PAVING JUST EAST OF THE JANESVILLE Y (COUNTY ROAD 1200E) TO THE PAVING JOINT JUST WEST OF UNIVERSITY DRIVE IN CHARLESTON.

THE WORK INCLUDED IN THIS SECTION CONSISTS OF APPLYING BITUMINOUS SURFACE TREATMENT A-2 AND PAINT PAVEMENT MARKINGS.

A FACTOR OF 25 LB/SQ YD IS USED TO FIGURE QUANTITIES FOR SEAL COAT AGGREGATE AND COVER COAT AGGREGATE IN THE A-2 SURFACE TREATMENT. A FACTOR OF 0.35 POUNDS PER SQUARE FOOT IS USED TO FIGURE QUANTITIES FOR BITUMINOUS MATERIALS (COVER AND SEAL COATS). ACTUAL RATES SHALL BE AS DETERMINED BY THE ENGINEER.

THE MATERIAL USED FOR SEAL COAT AGGREGATE SHALL BE CA-16 CRUSHED STONE.

THE QUANTITY FOR PAINT PAVEMENT MARKING LINE 4" CONSISTS OF 82,836 FEET WHITE AND 28,195 FEET YELLOW.

THE QUANTITY FOR PAINT PAVEMENT MARKING LINE 24" CONSISTS OF 11 FEET WHITE.

SHORT-TERM PAVEMENT MARKING SHALL BE APPLIED AFTER COMPLETION OF THE COVER COAT AND AFTER COMPLETION OF THE SEAL COAT. SHORT-TERM PAVEMENT MARKING SHALL BE PAINT AND CONSIST OF 10' LONG CENTERLINE SKIP DASHES EVERY 40'. THE FINAL PERMANENT PAVEMENT MARKING SHALL BE APPLIED DIRECTLY OVER THE SHORT-TERM PAVEMENT MARKING.

RAISED REFLECTIVE PAVEMENT MARKERS AND SURVEY MONUMENT VAULTS SHALL BE KEPT FREE OF THE BITUMINOUS SURFACE TREATMENT. SURVEY MONUMENT VAULTS SHALL BE PROTECTED BY COVERING THEM WITH A MINIMUM OF 8" X 8" OF TAPE. THE REFLECTOR LENS OF THE EXISTING RAISED REFLECTIVE PAVEMENT MARKERS SHALL BE PROTECTED BY COVERING THEM WITH A MINIMUM OF 3" X 4" OF TAPE. IT IS THE INTENT OF THE DEPARTMENT THAT THE REMAINING PORTION OF THE RAISED REFLECTIVE PAVEMENT MARKER CASTING NOT COVERED BY TAPE SHALL BE COATED WITH THE BITUMINOUS SURFACE TREATMENT IN ORDER TO HELP SEAL THE RAISED REFLECTIVE PAVEMENT MARKER IN PLACE. THE COST TO COVER AND REMOVE THE TAPE FROM THE RAISED REFLECTIVE PAVEMENT MARKERS AND SURVEY MONUMENT VAULTS WILL BE INCLUDED IN THE COST OF THE CONTRACT.

FILE NAME :	USER NAME : steffannk	DESIGNED -	REVISED -	STATE OF ILLINOIS DEPARTMENT OF TRANSPORTATION	INDEX OF SHEETS & GENERAL NOTES	* FAU 7643, FAS 1668, FAS 1667A		F.A. RTE.	SECTION	COUNTY	TOTAL SHEETS	SHEET NO.
p:\11\884EB\INTEG\Illinois.gov\PH\DOT\Documents\DOT Offices\District 7\Projects\747	DRAWN to: CA\shasta\0774775-shi'gennot	CHECKED -	REVISED -			•	D7 SEAL COAT 2017-1	COLES	6	2		
Default	PLOT SCALE = 100.0000' / in.	DATE -	REVISED -			SCALE:	SHEET OF SHEETS	STA.	TO STA.	CONTRACT NO. 74775		
	PLOT DATE = 11/4/2016	DATE -	REVISED -							ILLINOIS FED. AID PROJECT		

100 %
STATE

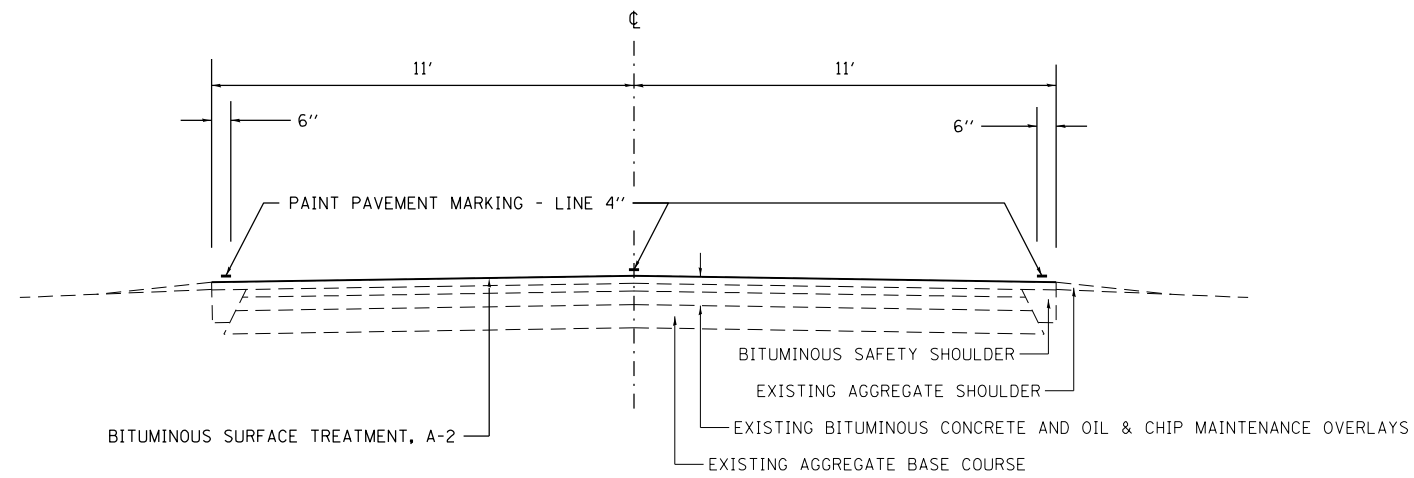
SUMMARY OF QUANTITIES			TOTAL QUANTITIES	CONSTRUCTION TYPE CODE	
CODE NO	ITEM	UNIT		RURAL 0005	URBAN 0005
40300400	BITUMINOUS MATERIALS (COVER AND SEAL COATS)	TON	333	312	21
40300500	COVER COAT AGGREGATE	TON	1318	1237	81
40300600	SEAL COAT AGGREGATE	TON	1318	1237	81
67100100	MOBILIZATION	LSUM	1	0.94	0.06
70100460	TRAFFIC CONTROL AND PROTECTION, STANDARD	LSUM	1	0.94	0.06
	701306				
70300100	SHORT TERM PAVEMENT MARKING	FOOT	10424	9795	629
* 78001110	PAINT PAVEMENT MARKING - LINE 4"	FOOT	111031	103051	7980
* 78001180	PAINT PAVEMENT MARKING - LINE 24"	FOOT	11	11	0

8

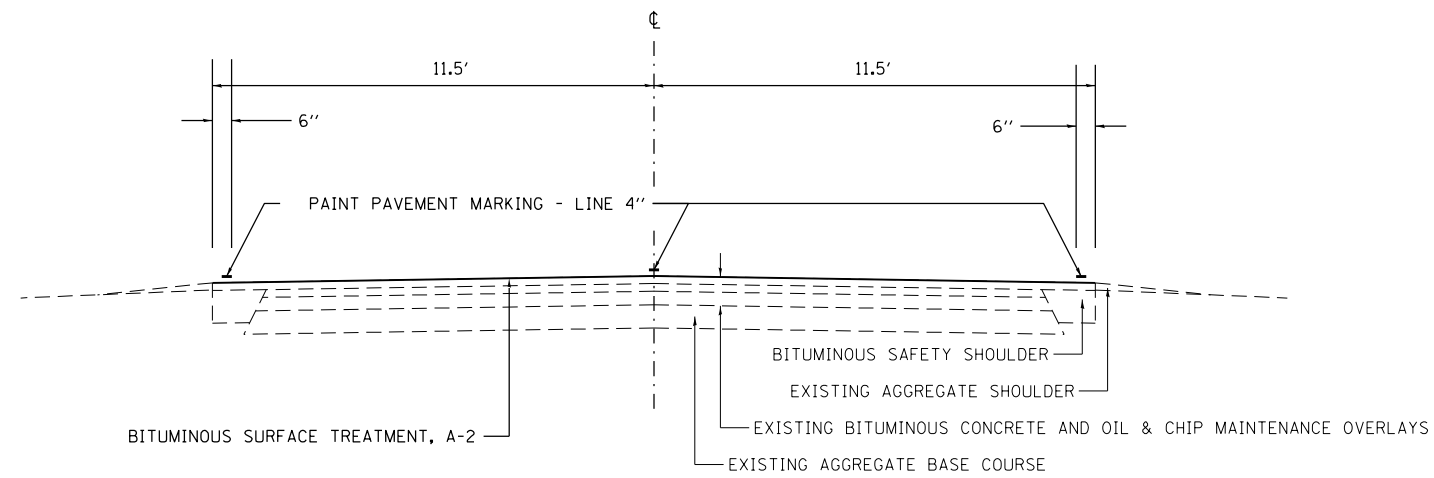
SPECIALTY ITEM

FILE NAME =		USER NAME = staffcmk	DESIGNED -	REVISED -	STATE OF ILLINOIS DEPARTMENT OF TRANSPORTATION	SUMMARY OF QUANTITIES SCALE: SHEET OF SHEETS STA. TO STA.		F.A. RTE. SECTION COUNTY TOTAL SHEETS SHEET NO.	
p:\11004E810INTEG\Illinois.gov\PWIDOT\Documents\DOT Offices\District 7\Projects\7475\DRAWING\CAD\Sheet\0774775-sht-500.dgn		PLotted -	REVISIED -	• DT SEAL COAT 2017-1 COLES 6 3					
PLOT SCALE = 1/8" = 1'-0"		CHECKED -	REVISIED -	CONTRACT NO. 74775					
PLOT DATE = 11/4/2016		DATE -	REVISIED -	ILLINOIS FED. AID PROJECT					

• FAU T643, FAS 1668, FAS 1667A



TYPICAL SECTION
 STA 359+84 TO STA 459+86.8
 STA 10+00 TO STA 11+50



TYPICAL SECTION
 STA 11+50 TO STA 14+78.7
 STA 1016+15 TO STA 1332+20

FILE NAME =	USER NAME = steffenmk	DESIGNED -	REVISED -
pw:\IL\084EBIDINTEG\illinois.gov\PWIDOT\Documents\IDOT Offices\District 7\Projects\74775\Drawings\CAD\Sheets\0774775-sht-typical.dwg		DRAWN -	REVISED -
Default	PLOT SCALE = 100.0000' / in.	CHECKED -	REVISED -
	PLOT DATE = 11/4/2016	DATE -	REVISED -

STATE OF ILLINOIS
 DEPARTMENT OF TRANSPORTATION

TYPICAL SECTIONS

SCALE: SHEET OF SHEETS STA. TO STA.

• FAU 7643, FAS 1668, FAS 1667A				
F.A. RTE.	SECTION	COUNTY	TOTAL SHEETS	SHEET NO.
•	D7 SEAL COAT 2017-1	COLES	6	4
			CONTRACT NO. 74775	
ILLINOIS FED. AID PROJECT				

BITUMINOUS SURFACE TREATMENT A-2 SCHEDULE

STATION	TO	STATION	LENGTH	WIDTH	AREA	BITUMINOUS MATERIAL (COVER AND SEAL COATS)	COVER COAT AGGREGATE	SEAL COAT AGGREGATE
			FOOT	FOOT	SQ YD	TONS	TONS	TONS
359+84.0		TO 447+65.0	8781.0	22	21465	67.6	268.3	268.3
447+65.0	LT	TO 447+90.0	25.0	11	31	0.1	0.4	0.4
447+90.0		TO 452+84.0	494.0	22	1208	3.8	15.1	15.1
452+84.0	LT	TO 453+09.0	25.0	11	31	0.1	0.4	0.4
453+09.0		TO 459+86.8	677.8	22	1657	5.2	20.7	20.7
10+00.0		TO 11+50.0	150.0	22	367	1.2	4.6	4.6
11+50.0		TO 14+78.7	328.7	23	840	2.6	10.5	10.5
1016+15.0		TO 1131+83.4	11568.4	23	29564	93.1	369.6	369.6
1131+83.4		TO 1133+31.7	148.3	0	0	0.0	0.0	0.0
1133+31.7		TO 1304+61.0	17129.3	23	43775	137.9	547.2	547.2
RURAL TOTAL						312	1237	1237
1304+61.0		TO 1307+04.0	243.0	0	0	0.0	0.0	0.0
1307+04.0		TO 1332+20.0	2516.0	23	6430	20.3	80.4	80.4
URBAN TOTAL						21	81	81
TOTAL						333	1318	1318

OMIT RUMBLE STRIPS

OMIT RUMBLE STRIPS

OMIT BRIDGE

OMIT BRIDGE

SHORT TERM PAVEMENT MARKING SCHEDULE

STATION	TO	STATION	LENGTH	SHORT TERM PAVEMENT MARKING (YELLOW)
359+84.0	TO	459+86.8	10003	2501
10+00.0	TO	14+78.0	478	120
1016+15.0	TO	1131+83.4	11568	2892
1131+83.4	TO	1133+31.7	148	0
1133+31.7	TO	1304+61.0	17129	4282
RURAL TOTAL				9795
1304+61.0	TO	1307+04.0	243	0
1307+04.0	TO	1332+20.0	2516	629
URBAN TOTAL				629
TOTAL				10424

OMIT BRIDGE

OMIT BRIDGE

SURVEY POINTS SCHEDULE

SURVEY ITEM	STATION	OFFSET	NORTHING	EASTING	ELEV
MAG NAIL	380+00.48	0.0'	990796.787	1010576.144	694.285
MAG NAIL	387+98.00	0.0'	990737.424	1011369.763	688.13

PAVMENT MARKING SCHEDULE

STATION	TO	STATION	LENGTH	PAINT PAVEMENT MARKING - LINE 4" (WHITE)	PAINT PAVEMENT MARKING - LINE 4" (YELLOW)	PAINT PAVEMENT MARKING - LINE 12" (WHITE)
			FOOT	FOOT	FOOT	FOOT
359+84.0	TO	373+71.0	1387	2774	347	0
373+71.0	TO	381+67.0	796	1592	995	0
381+67.0	TO	382+15.0	48	96	12	0
382+15.0	TO	395+38.0	1323	2646	1654	0
395+38.0	TO	397+45.0	207	414	52	0
397+45.0	TO	405+25.0	780	1515	975	0
405+25.0	TO	407+10.0	185	370	370	0
407+10.0	TO	412+89.0	579	1113	724	0
412+89.0	TO	419+26.0	637	1274	1274	0
419+26.0	TO	429+57.0	1031	2062	1289	0
429+57.0	TO	459+86.8	3030	6060	757	0
10+00.0	TO	14+78.0	478	726	120	11
1015+45.0	TO	1016+08.0	63	0	126	0
1016+08.0	TO	1104+91.0	8883	17491	2221	0
1104+91.0	TO	1114+95.0	1004	2008	1255	0
1114+95.0	TO	1121+85.0	690	1380	1380	0
1121+85.0	TO	1130+22.0	837	1674	1046	0
1130+22.0	TO	1134+20.0	398	651	796	0
1134+20.0	TO	1144+52.0	1032	1924	1290	0
1144+52.0	TO	1144+93.0	41	82	82	0
1144+93.0	TO	1156+34.0	1141	2282	1426	0
1156+34.0	TO	1265+20.0	10886	21407	2722	0
1265+20.0	TO	1276+27.0	1107	2214	1384	0
1276+27.0	TO	1285+81.0	954	1908	1193	0
1285+81.0	TO	1287+18.0	137	274	274	0
1287+18.0	TO	1294+68.0	750	1500	938	0
1294+68.0	TO	1297+33.0	265	530	66	0
1297+33.0	TO	1304+61.0	728	1406	910	0
RURAL TOTAL BY COLOR				77373	25678	11
RURAL TOTAL BY PAY ITEM				103051		11
1304+61.0	TO	1308+38.0	377	754	471	0
1308+38.0	TO	1317+70.0	932	1809	233	0
1317+70.0	TO	1327+74.0	1004	2008	1255	0
1327+74.0	TO	1332+20.0	446	892	558	0
URBAN TOTAL BY COLOR				5463	2517	0
URBAN TOTAL BY PAY ITEM				7980		0
TOTAL BY COLOR				82836	28195	11
TOTAL BY PAY ITEM				111031		11

CENTERLINE SKIP DASH

EB NO PASSING ZONE AND CENTERLINE SKIP DASH

CENTERLINE SKIP DASH

WB NO PASSING ZONE AND CENTERLINE SKIP DASH

CENTERLINE SKIP DASH

EB NO PASSING ZONE AND CENTERLINE SKIP DASH

EB NO PASSING ZONE AND WB NO PASSING ZONE

WB NO PASSING ZONE AND CENTERLINE SKIP DASH

WB NO PASSING ZONE AND EB NO PASSING ZONE

WB NO PASSING ZONE AND CENTERLINE SKIP DASH

CENTERLINE SKIP DASH

CENTERLINE SKIP DASH

NB NO PASSING ZONE AND SB NO PASSING ZONE

CENTERLINE SKIP DASH

NB NO PASSING ZONE AND CENTERLINE SKIP DASH

NB NO PASSING ZONE AND SB NO PASSING ZONE

SB NO PASSING ZONE AND CENTERLINE SKIP DASH

SB NO PASSING ZONE AND NB NO PASSING ZONE

NB NO PASSING ZONE AND CENTERLINE SKIP DASH

NB NO PASSING ZONE AND SB NO PASSING ZONE

SB NO PASSING ZONE AND CENTERLINE SKIP DASH

SB NO PASSING ZONE AND CENTERLINE SKIP DASH

NB NO PASSING ZONE AND CENTERLINE SKIP DASH

SB NO PASSING ZONE AND CENTERLINE SKIP DASH

SB NO PASSING ZONE AND NB NO PASSING ZONE

NB NO PASSING ZONE AND CENTERLINE SKIP DASH

CENTERLINE SKIP DASH

SB NO PASSING ZONE AND CENTERLINE SKIP DASH

SB NO PASSING ZONE AND CENTERLINE SKIP DASH

SB NO PASSING ZONE AND CENTERLINE SKIP DASH

CENTERLINE SKIP DASH

NB NO PASSING ZONE AND CENTERLINE SKIP DASH

SB NO PASSING ZONE AND CENTERLINE SKIP DASH

FILE NAME =	USER NAME = steffenmk	DESIGNED -	REVISED -
p:\11084EBIDINTEG.illinois.gov\PI\DOT\Documents\DOT Offices\District 7\Projects\74775\Drawings\CAD\Sheets\0774775-sh-t-schedule		REVISION	REVISED -
Default	PLOT SCALE = 100.0000' / in.	CHECKED -	REVISED -
	PLOT DATE = 11/4/2016	DATE -	REVISED -

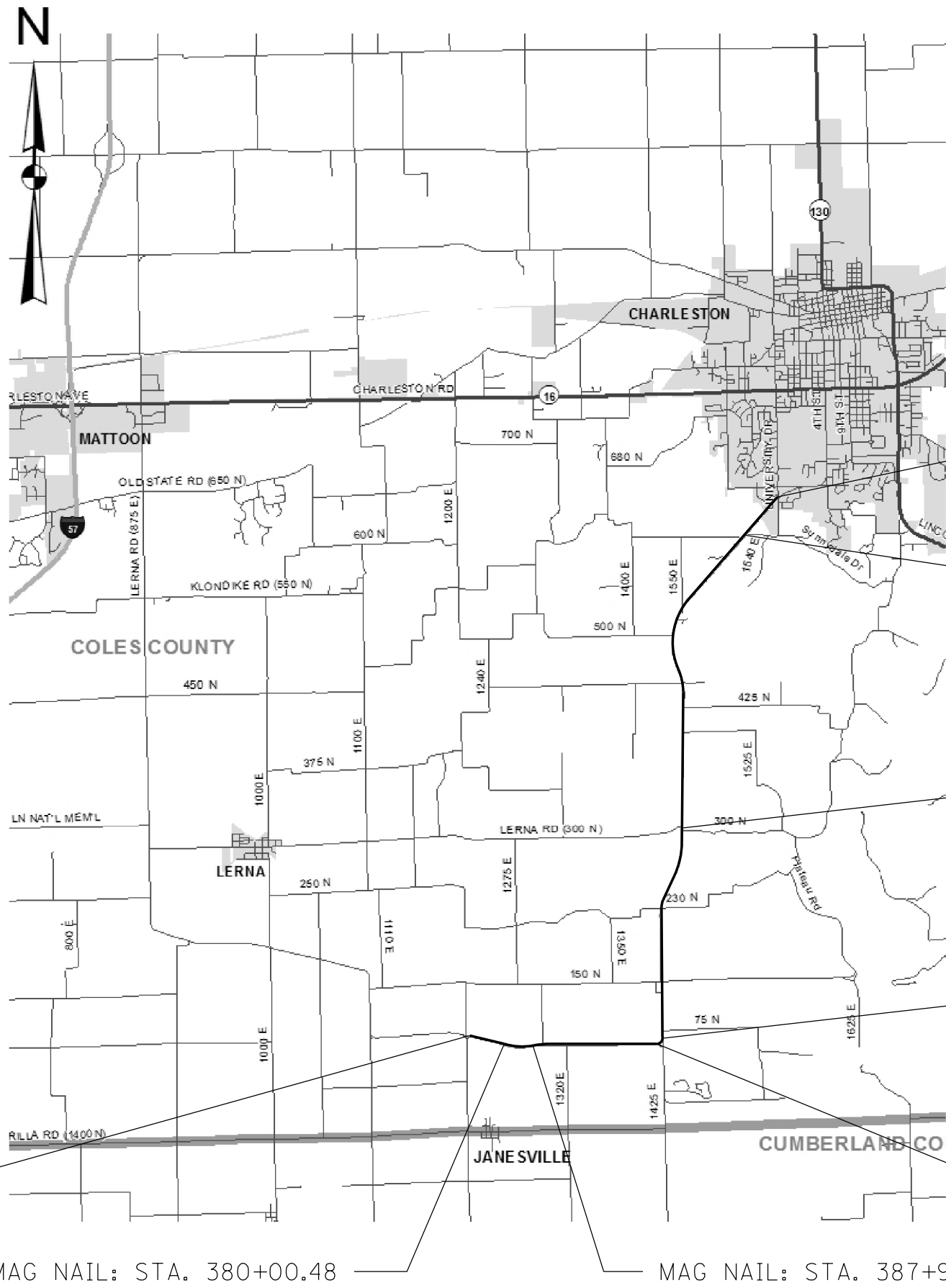
STATE OF ILLINOIS
DEPARTMENT OF TRANSPORTATION

SCHEDULE OF QUANTITIES

SCALE: SHEET OF SHEETS STA. TO STA.

• FAU 7643, FAS 1668, FAS 1667A

F.A. RTE.	SECTION	COUNTY	TOTAL SHEETS	SHEET NO.
	D7 SEAL COAT 2017-1	COLES	6	5
			CONTRACT NO. 74775	
ILLINOIS FED. AID PROJECT				



SECTION BEGINS:
STATION 359+84

SECTION ENDS:
STATION 1332+20

BRIDGE OMISSION:
STATION 1304+61 TO
STATION 1307+04

BRIDGE OMISSION:
STATION 1131+83.4 TO
STATION 1133+31.70

EQUATION:
STATION 14+78.7 BK.
STATION 1016+15.0 AH.

EQUATION:
STATION 459+86.8 BK.
STATION 10+00.0 AH.

MAG NAIL: STA. 380+00.48

MAG NAIL: STA. 387+98

FILE NAME =	USER NAME = steffenk	DESIGNED -	REVISED -
pw:\IL\084EBID\INTEG.illinois.gov\PWIDOT\Documents\IDOT Offices\District 7\Projects\74775\Drawings\CAD\Sheets\0774775-sht-plan.dgn		REVISION	REVISED -
Default	PLOT SCALE = 2.0000' / in.	CHECKED -	REVISED -
	PLOT DATE = 11/4/2016	DATE -	REVISED -

**STATE OF ILLINOIS
DEPARTMENT OF TRANSPORTATION**

PLAN SHEET

SCALE: SHEET OF SHEETS STA. TO STA.

• FAU 7643, FAS 1668, FAS 1667A					
F.A. RTE.	SECTION	COUNTY	TOTAL SHEETS	SHEET NO.	
•	D7 SEAL COAT 2017-1	COLES	6	6	
			CONTRACT NO. 74775		
ILLINOIS FED. AID PROJECT					