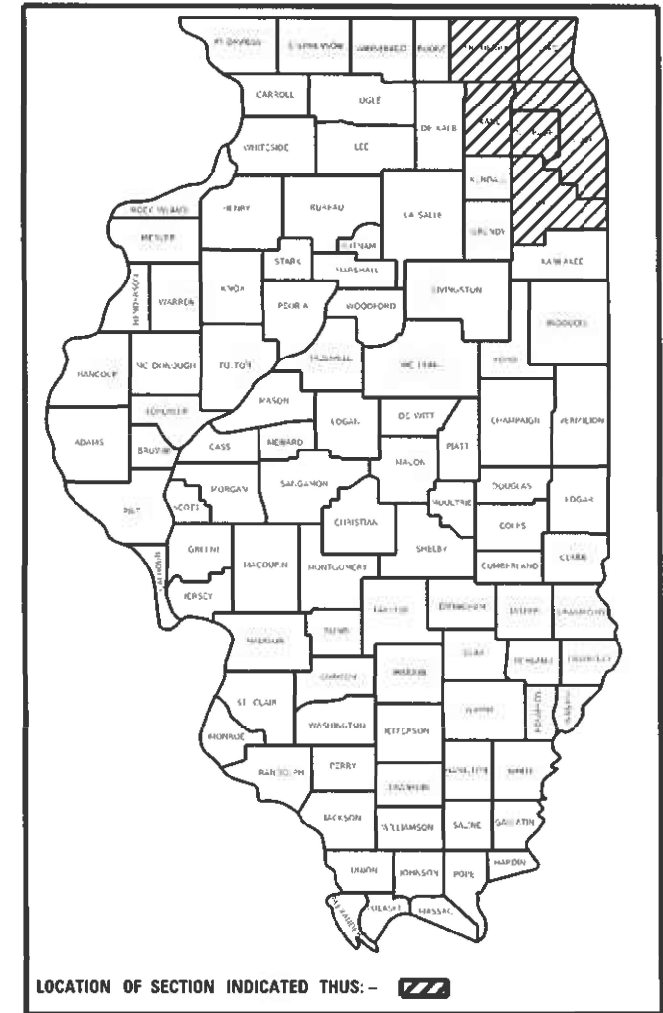


STATE OF ILLINOIS
DEPARTMENT OF TRANSPORTATION

F.A. B.T.E.	SECTION	COUNTY	TOTAL SHEETS	SHEET NO.
VAR	2022 TREE 01	VARIOUS	13	1
		ILLINOIS	CONTRACT NO. 62T89	

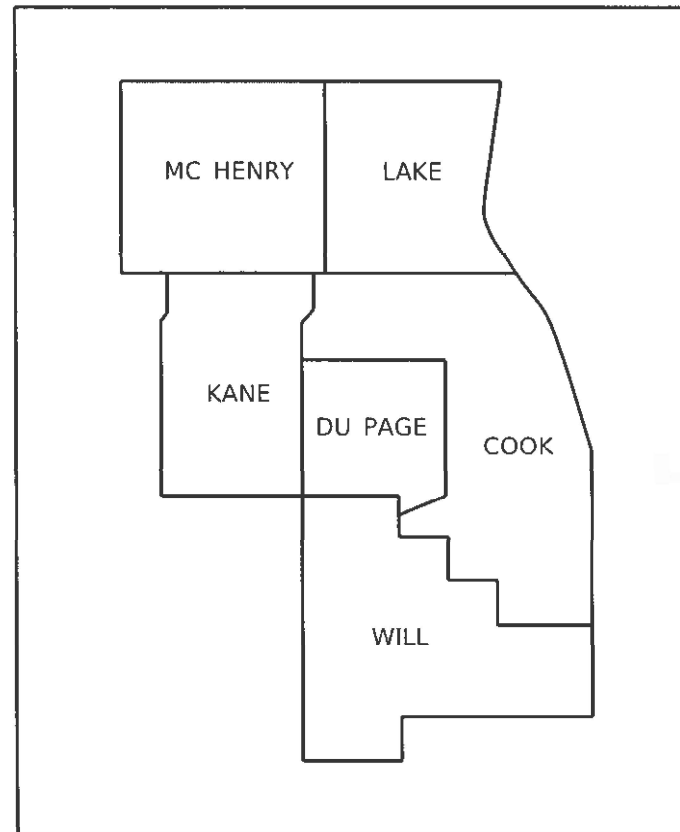
D-91-202-22



PROPOSED HIGHWAY PLANS

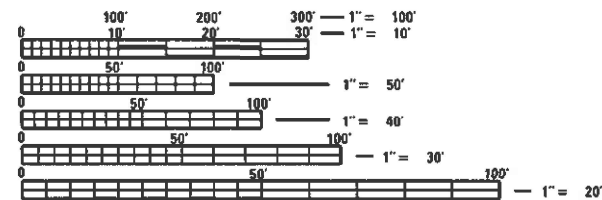
ROUTE: VARIOUS
SECTION 2022 TREE 01
PROJECT N/A
DEAD TREE REMOVAL
VARIOUS COUNTIES

C-91-254-22



FOR INDEX OF SHEETS, SEE SHEET NO. 2

IMPROVEMENTS ARE AT VARIOUS LOCATIONS
WITHIN DISTRICT ONE



FULL SIZE PLANS HAVE BEEN PREPARED USING STANDARD ENGINEERING SCALES. REDUCED SIZED PLANS WILL NOT CONFORM TO STANDARD SCALES. IN MAKING MEASUREMENTS ON REDUCED PLANS, THE ABOVE SCALES MAY BE USED.

J.U.L.I.E.
JOINT UTILITY LOCATION INFORMATION FOR EXCAVATORS
1-800-892-0123
OR 811

PROJECT ENGINEER JAMES STUMPNER
PROJECT MANAGER GIOVANNA ZAFFINA (847) 705-4171

CONTRACT NO. 62T89

GROSS LENGTH = x.xx FT. = x.xxx MILE
NET LENGTH = x.xx FT. = x.xxx MILE

STATE OF ILLINOIS
DEPARTMENT OF TRANSPORTATION

SUBMITTED October 21, 2022

[Signature]
REGIONAL ENGINEER

December 9, 2022

[Signature]
ENGINEER OF DESIGN AND ENVIRONMENT

December 9, 2022

[Signature]
DIRECTOR OF HIGHWAYS PROJECT IMPLEMENTATION

PRINTED BY THE AUTHORITY
OF THE STATE OF ILLINOIS

INDEX OF SHEETS

SHEET NO.	DESCRIPTION
1	COVER SHEET
2	INDEX OF SHEETS, HIGHWAY STANDARDS, GENERAL NOTES
3	SUMMARY OF QUANTITIES
4 - 8	TREE REMOVAL, ACRES (SPECIAL) LOCATIONS
9	SAMPLE WORK ORDERS
10	STUMP DETAIL
11	PRUNING FOR SAFETY AND EQUIPMENT CLEARANCE
12	TRAFFIC CONTROL AND PROTECTION FOR SIDE ROADS, INTERSECTIONS, & DRIVEWAYS (TC-10)
13	TRAFFIC CONTROL DETAIL FOR FREEWAY SHOULDER CLOSURES AND PARTIAL RAMP CLOSURE (TC-17)

HIGHWAY STANDARDS

STANDARD NO.	DESCRIPTION
701001-02	OFF-ROAD OPERATIONS, 2L, 2W, MORE THAN 15' AWAY
701006-05	OFF-ROAD OPERATIONS, 2L, 2W, 15' TO 24" FROM PAVEMENT
701106-02	OFF-ROAD OPERATIONS, MORE THAN 15' AWAY
701201-05	LANE CLOSURE, 2L, 2W, DAY ONLY, FOR SPEEDS ≥ 45 MPH
701301-04	LANE CLOSURE, 2L, 2W, SHORT TIME OPERATIONS
701311-03	LANE CLOSURE 2L, 2W MOVING OPERATIONS - DAY ONLY
701421-08	LANE CLOSURE, MULTILANE, DAY OPERATION ONLY, FOR SPEEDS ≥ 45 MPH TO 55 MPH
701422-10	LANE CLOSURE, MULTILANE, FOR SPEEDS ≥ 45 MPH TO 55 MPH
701427-05	LANE CLOSURE, MULTILANE, INTERMITTENT OR MOVING OPERATIONS, FOR SPEEDS ≤ 40 MPH
701501-06	URBAN LANE CLOSURE, 2L, 2W, UNDIVIDED
701502-09	URBAN LANE CLOSURE, 2L, 2W, BI-DIRECTIONAL LEFT TURN LANE
701601-09	URBAN LANE CLOSURE, MULTILANE, 1W OR 2W WITH NON-TRAVERSABLE MEDIAN
701606-10	URBAN SINGLE LANE CLOSURE, MULTILANE, 2W WITH MOUNTABLE MEDIAN
701611-01	URBAN HALF CLOSURE, MULTILANE, 2W WITH MOUNTABLE MEDIAN
701701-10	URBAN LANE CLOSURE, MULTILANE INTERSECTION
701801-06	SIDEWALK, CORNER OR CROSSWALK CLOSURE
701901-08	TRAFFIC CONTROL DEVICES

GENERAL NOTES

- BEFORE STARTING ANY EXCAVATION, THE CONTRACTOR SHALL CALL "J.U.L.I.E." AT (800) 892-0123 OR 811 FOR FIELD LOCATIONS OF BURIED ELECTRIC, TELEPHONE AND GAS UTILITIES. (48 HOUR NOTIFICATION IS REQUIRED).
- THE CONTRACTOR WILL NOT BE ALLOWED TO SET UP A YARD OR FIELD OFFICE ON STATE PROPERTY WITHOUT WRITTEN PERMISSION FROM THE DEPARTMENT.
- IT SHALL BE THE CONTRACTOR'S RESPONSIBILITY TO VERIFY ALL CONDITIONS EXISTING IN THE FIELD PRIOR TO STARTING WORK ORDERS.
- THE CONTRACTOR SHALL CONTACT DISTRICT ONE TRAFFIC CONTROL SUPERVISOR AT (847) 705-4470 A MINIMUM OF 72 HOURS IN ADVANCE OF BEGINNING WORK.
- THE CONTRACTOR SHALL REQUEST AND GAIN APPROVAL FROM THE ILLINOIS DEPARTMENT OF TRANSPORTATION'S EXPRESSWAY TRAFFIC OPERATIONS ENGINEER AT WWW.IDOTLCS.COM TWENTY-FOUR (24) HOURS IN ADVANCE OF ALL DAILY LANE, RAMP AND SHOULDER CLOSURES AND 7 DAYS IN ADVANCE OF ALL PERMANENT AND WEEKEND CLOSURES AND 7 DAYS IN ADVANCE OF ALL PERMANENT AND WEEKEND CLOSURES ON ALL FREEWAYS AND/OR EXPRESSWAYS IN DISTRICT ONE. THIS ADVANCE NOTIFICATION IS CALCULATED BASED ON WORKWEEK OF MONDAY THROUGH FRIDAY AND SHALL NOT INCLUDE WEEKENDS OR HOLIDAYS.
- THE CONTRACTOR SHALL BE REQUIRED TO PROVIDE ACCESS TO ABUTTING PROPERTY AT ALL TIMES DURING THE CONSTRUCTION OF THIS PROJECT.
- THE CONTRACTOR SHALL USE CARE IN TREE REMOVAL OPERATIONS NEAR ANY AND ALL EXISTING ITEMS THAT WILL NOT BE REMOVED. ANY DAMAGE DONE TO EXISTING ITEMS BY THE CONTRACTOR SHALL BE REPAIRED AT THE CONTRACTOR'S OWN EXPENSE TO THE SATISFACTION OF THE ENGINEER.
- THE CONTRACTOR SHALL MAINTAIN PEDESTRIAN ACCESS AT ALL TIMES DURING CONSTRUCTION.
- THE CONSTRUCTION LIMITS WILL BE STAKED AND APPROVED BY THE ENGINEER PRIOR TO COMMENCING CONSTRUCTION. THE CONSTRUCTION LIMITS MAY BE ADJUSTED BY THE ENGINEER TO PRESERVE TREES AND NO ADDITIONAL COMPENSATION WILL BE PAID TO THE CONTRACTOR FOR CHANGES IN CONSTRUCTION LIMITS.
- DURING CONSTRUCTION OPERATIONS, WHEN ANY LOOSE MATERIAL IS DEPOSITED IN THE FLOW LINE OF DITCHES, GUTTERS, OR DRAINAGE STRUCTURES SO THAT THE NATURAL FLOW OF WATER IS OBSTRUCTED, THE MATERIAL SHALL BE REMOVED AT THE CLOSE OF EACH WORKING DAY. THIS WORK IS CONSIDERED AS PART OF CLEAN-UP.
- TO AVOID IMPACTS TO THE STATE AND FEDERALLY-THREATENED NORTHERN LONG EARED BAT (MYOTIS SEPTENTRIONALIS) AND ITS HABITAT, CLEARING OF POTENTIAL HABITAT TREES SHALL NOT BE PERMITTED FROM APRIL 1ST THROUGH OCTOBER 14TH. THE ENGINEER SHALL HAVE THE FINAL DETERMINATION OF TREE REMOVAL.
- THE CONTRACTOR SHALL ADHERE TO ARTICLE 107.23 OF THE CURRENT IDOT STANDARD SPECIFICATIONS BOOK.
- WHEN HERBICIDE WORK IS SPECIFIED AND AUTHORIZED, THE CONTRACTOR SHALL HAVE A LICENSED APPLICATOR ON THE WORK SITE TO PERFORM SAID WORK UNDER THE DIRECT SUPERVISION OF THE RESIDENT ENGINEER.

MODEL: Default
 FILE NAME: C:\msd11\work\pds\plans\standards\0735373D\114931.tbl\project.dwg

USER NAME = Melissa DelRosario	DESIGNED -	REVISED -
	DRAWN -	REVISED -
PLOT SCALE = 1/8" = 1'-0"	CHECKED -	REVISED -
PLOT DATE = 10/26/2022	DATE -	REVISED -

**STATE OF ILLINOIS
DEPARTMENT OF TRANSPORTATION**

**DEAD TREE REMOVAL
INDEX OF STREETS, STATE STANDARDS, & GENERAL NOTES**

SCALE SHEET OF SHEETS STA. TO STA.

F.A. RTE.	SECTION	COUNTY	TOTAL SHEETS	SHEET NO.
VAR	2022 TREE 01	VARIOUS	13	2
				CONTRACT NO. 62T89
ILLINOIS FED. AID PROJECT				

SUMMARY OF QUANTITIES				CONSTRUCTION TYPE CODE				
CODE NO	ITEM	UNIT	TOTAL QUANTITIES	100% STATE FORMAL FUNDS 0031				
X2010201	TREE LIMB REMOVAL (OVER 10 INCHES DIAMETER), EXPIDITED	EACH	10	10				
20100110	TREE REMOVAL (6 TO 15 UNITS DIAMETER)	UNIT	5200	5200				
20100210	TREE REMOVAL (OVER 15 UNITS DIAMETER)	UNIT	3000	3000				
20101300	TREE PRUNING (1 TO 10 INCH DIAMETER)	EACH	15	15				
20101350	TREE PRUNING (OVER 10 INCH DIAMETER)	EACH	25	25				
X0100018	TREE REMOVAL (UNDER 6 UNITS DIAMETER)	UNIT	25	25				
X2010100	TREE LIMB REMOVAL (4 TO 10 INCHES DIAMETER)	EACH	23	23				
X2010101	TREE LIMB REMOVAL (4 TO 10 INCHES DIAMETER), EXPIDITED	EACH	10	10				
X2010110	TREE REMOVAL (6 TO 15 UNITS DIAMETER) EXPIDITED	UNIT	50	50				
X2010200	TREE LIMB REMOVAL (OVER 10 INCHES DIAMETER)	EACH	20	20				
X2010210	TREE REMOVAL (OVER 15 UNITS DIAMETER), EXPIDITED	UNIT	700	700				
X2010310	TREE REMOVAL (SPECIAL)	UNIT	5	5				

SUMMARY OF QUANTITIES				CONSTRUCTION TYPE CODE				
CODE NO	ITEM	UNIT	TOTAL QUANTITIES	100% STATE FORMAL FUNDS 0031				
X2010350	TREE REMOVAL, ACRES (SPECIAL)	ACRE	16	16				
X2010400	STUMP REMOVAL ONLY	UNIT	150	150				
X2011300	TREE PRUNING (1 TO 10 INCH DIAMETER), EXPIDITED	EACH	10	10				
X2011350	TREE PRUNING (OVER 10 INCH DIAMETER), EXPIDITED	EACH	10	10				
X2100002	PRUNING FOR SAFETY AND EQUIPMENT CLEARANCE	UNIT	25	25				
Z0064800	SELECTIVE CLEARING	UNIT	20	20				
Z0076604	TRAINEES - TRAINING PROGRAM GRADUATE	HOURS	1000	1000				

TREE REMOVAL, ACRES (SPECIAL)

COUNTY	ROUTE: LIMITS	QUANTITY	UNIT
COOK	NB IL-83: 1/4 mile east of IL 171, Lemont	1.7	ACRE
	NB IL-83: 1/4 mile west of S. 104th Avenue, Willow Springs	0.5	ACRE
	SB IL-83: 1/4 mile west of S. 104th Avenue, Willow Springs	4.1	ACRE
	SB IL-83: S. 104th Avenue to US 45, Willow Springs	1.1	ACRE
	SB IL-83: S. 104th Avenue to US 45, Willow Springs	0.6	ACRE
	NB IL-83: S.104th Avenue to US 45, Willow Springs	0.5	ACRE
WILL	I-55 N: Exit 238 - IL 129, south side of ramp, Braidwood	0.5	ACRE
	I-55 N: Exit 238 - IL 129, north side of ramp, Braidwood	0.3	ACRE
	I-55 S: Exit 247 - Bluff Rd, east side of ramp, Channahon	0.2	ACRE
	I-55 S: Exit 247 - Bluff Rd, west side of ramp, Channahon	0.1	ACRE

NOTES:

1. CONTACT IDOT ROADSIDE DEVELOPMENT UNIT AT (847) 705-4171 FOR LAYOUT.
2. ADDITIONAL LOCATIONS MAY BE PROVIDED BY THE RESIDENT ENGINEER THROUGH WORK ORDERS.

MODEL Default
 FILE NAME c:\work\hard\planning\1075572\1075572\1075572.dgn

USER NAME = Nicholas DePasqua	DESIGNED -	REVISED -
	DRAWN -	REVISED -
PLOT SCALE = 100 0249' / in.	CHECKED -	REVISED -
PLOT DATE = 10/26/2022	DATE -	REVISED -

**STATE OF ILLINOIS
DEPARTMENT OF TRANSPORTATION**

**DEAD TREE REMOVAL
LOCATIONS FOR TREE REMOVAL, ACRES (SPECIAL)**

F.A. RTE	SECTION	COUNTY	TOTAL SHEETS	SHEET NO.
VAR	2022 TREE 01	VARIOUS	13	4
			CONTRACT NO. 62T89	
ILLINOIS FED AID PROJECT				

SCALE: SHEET OF SHEETS STA. TO STA.



H:\DCL DefAult...work\mofdot\ilcas\proj\2552\01114821.dwg: 1/26/2022

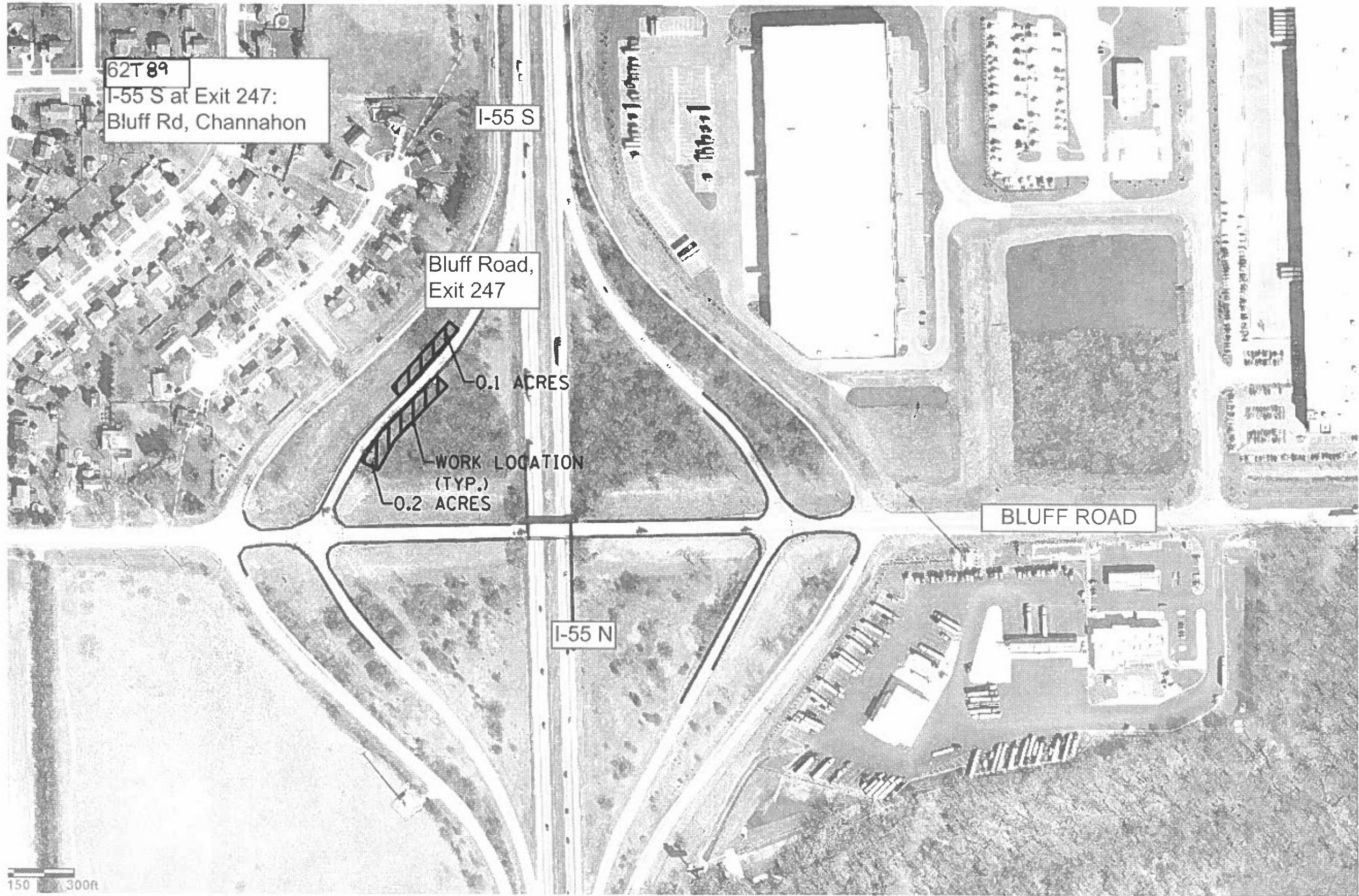
USER NAME = Melissa DeRosario	DESIGNED -	REVISED -
	DRAWN -	REVISED -
PLOT SCALE = 100.4516' / in	CHECKED -	REVISED -
PLOT DATE = 10/26/2022	DATE -	REVISED -

STATE OF ILLINOIS
DEPARTMENT OF TRANSPORTATION

DEAD TREE REMOVAL
LOCATION MAP OF I-55 N AT EXIT 238 - IL 129

SCALE: SHEET OF SHEETS STA. TO STA.

F.A. RTE.	SECTION	COUNTY	TOTAL SHEETS	SHEET NO.
VAR	2022 TREE 01	VARIOUS	13	5
CONTRACT NO. 62T89			ILLINOIS FED AID PROJECT	



MODEL: D:\cort
 FILE NAME: c:\pwworking\pdp\project\62281\14921.dwg
 DATE: 10/26/2022

USER NAME = Melissa DelPosario	DESIGNED -	REVISED -
PLLOT SCALE = 100.2251 : 1 in	DRAWN -	REVISED -
PLLOT DATE = 10/26/2022	CHECKED -	REVISED -
	DATE -	REVISED -

STATE OF ILLINOIS
DEPARTMENT OF TRANSPORTATION

DEAD TREE REMOVAL
LOCATION MAP OF I-55 S EXIT 247 - BLUFF ROAD

PART	SECTION	COUNTY	TOTAL SHEETS	SHEET NO.
VAR	2022 TREE 01	VARIOUS	13	6
			CONTRACT NO. 62T89	
ILLINOIS FED. AID PROJECT				

SCALE: SHEET OF SHEETS STA. TO STA.



62T89
 IL 83: 104th Avenue to IL 171,
 Willow Springs

1.7 ACRES

0.5 ACRES

WORK LOCATION (TYP.)

4.1 ACRES

IL 171

Cap
 Sauers
 Holdings

104th Av

Cap Sauers
 Holdings



MODEL: D:\proj\62T89\work\62T89.dwg
 FILE NAME: 62T89.dwg
 USER: MDR
 DATE: 10/26/2022

USER NAME = Melissa.DuRosano	DESIGNED -	REVISED -
	DRAWN -	REVISED -
PLOT SCALE = 100 3986 1/4 in	CHECKED -	REVISED -
PLOT DATE = 10/26/2022	DATE -	REVISED -

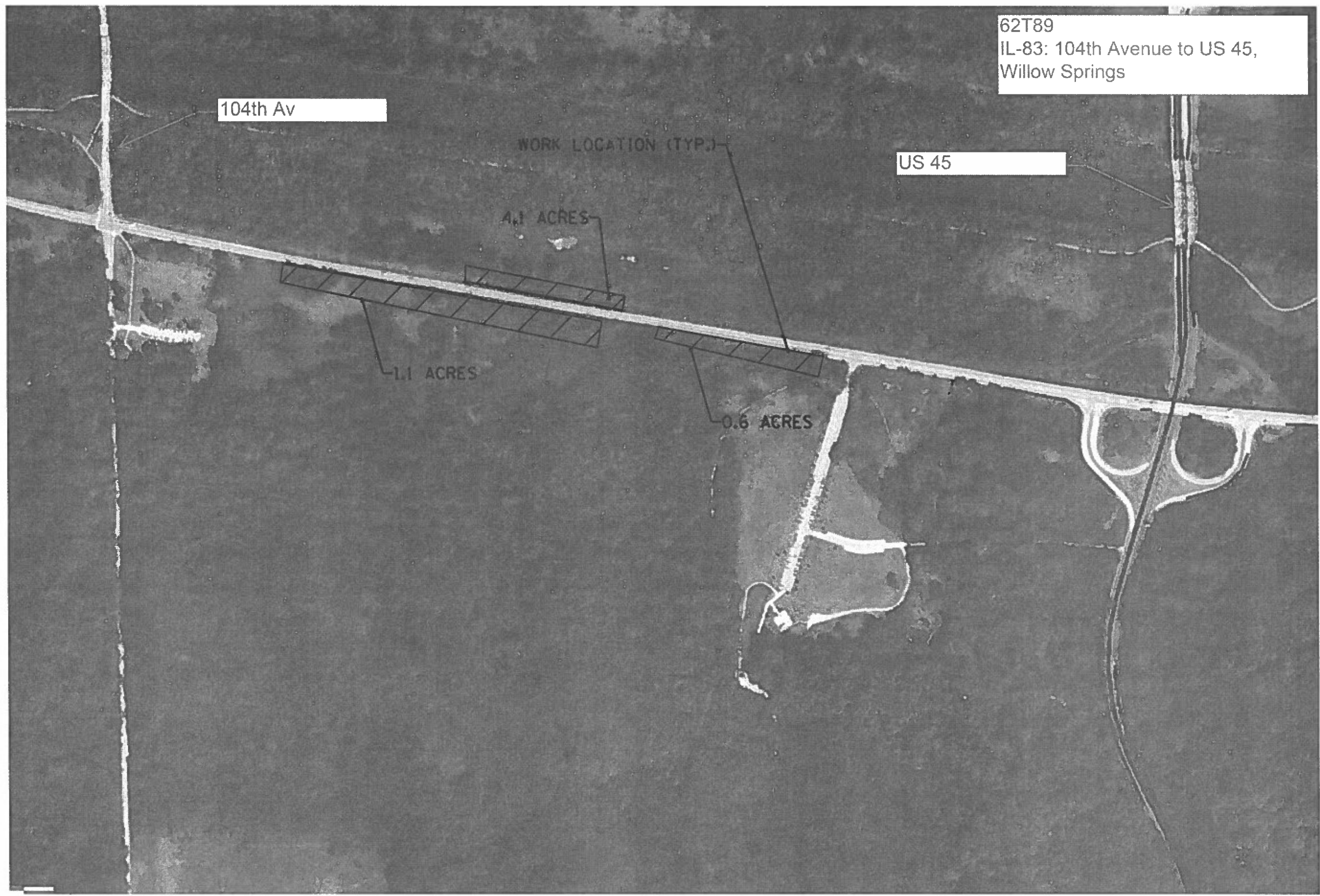
STATE OF ILLINOIS
 DEPARTMENT OF TRANSPORTATION

DEAD TREE REMOVAL
 LOCATION MAP OF IL 83 BETWEEN 104TH AVE. TO IL 171

SCALE: SHEET OF SHEETS STA. TO STA.

F.A. RTE.	SECTION	COUNTY	TOTAL SHEETS	SHEET NO.
VAR	2022 TREE 01	VARIOUS	13	7
CONTRACT NO. 62T89			ILLINOIS FED. AID PROJECT	

62T89
 IL-83: 104th Avenue to US 45,
 Willow Springs



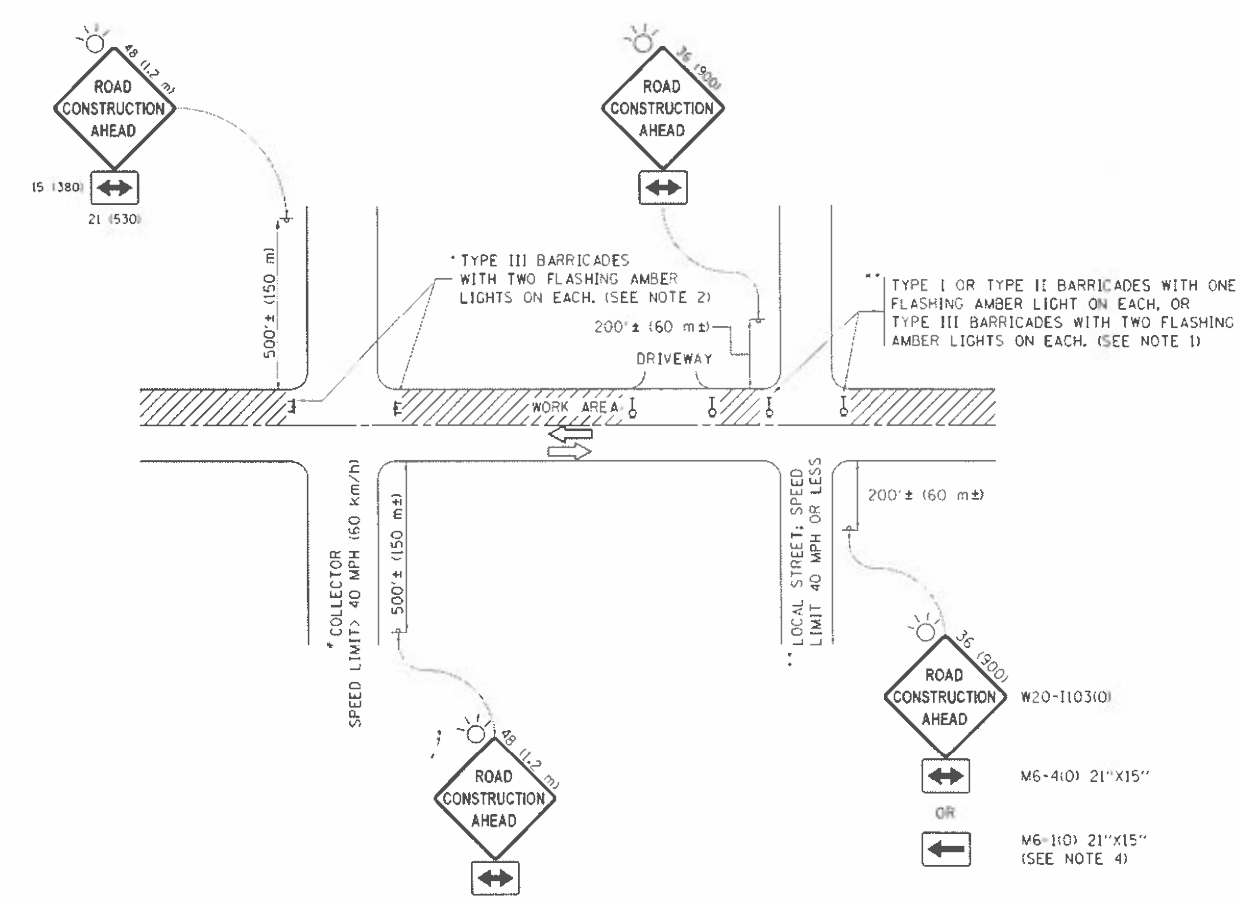
MODEL: D:\avi\...
 FILE: maplig...
 WORKSPACE: ...

USER NAME - Melissa DeRosa	DESIGNED -	REVISED -
PLOT SCALE - 100.0493 / in.	DRAWN -	REVISED -
PLOT DATE - 10/26/2022	CHECKED -	REVISED -
	DATE -	REVISED -

STATE OF ILLINOIS
DEPARTMENT OF TRANSPORTATION

DEAD TREE REMOVAL
LOCATION MAP OF IL 83 BETWEEN 104TH AVE TO IL 171

F.A. RTE	SECTION	COUNTY	TOTAL SHEETS	SHEET NO.
VAR	2022 TREE 01	VARIOUS	13	8
ILLINOIS FED. AID PROJECT			CONTRACT NO. 62T89	



NOTES:

1. SIDE ROAD WITH A SPEED LIMIT OF 40 MPH (60 km/h) OR LESS AS SHOWN ON THE DRAWING AND AS DIRECTED BY THE ENGINEER:
 - a) ONE "ROAD CONSTRUCTION AHEAD" SIGN 36 x 36 (900x900) WITH A FLASHER MOUNTED ON IT APPROXIMATELY 200' (60 m) IN ADVANCE OF THE MAIN ROUTE.
 - b) THE CLOSED PORTION OF THE MAIN ROUTE SHALL BE PROTECTED BY BLOCKING WITH TYPE I, TYPE II OR TYPE III BARRICADES, 1/3 OF THE CROSS SECTION OF THE CLOSED PORTION.
2. SIDE ROAD WITH A SPEED LIMIT GREATER THAN 40 MPH (60 km/h) AS SHOWN ON THE DRAWING AND AS DIRECTED BY THE ENGINEER:
 - a) ONE "ROAD CONSTRUCTION AHEAD" SIGN 48 x 48 (1.2 m x 1.2 m) WITH A FLASHER MOUNTED ON IT APPROXIMATELY 500' (150 m) IN ADVANCE OF THE MAIN ROUTE.
 - b) THE CLOSED PORTION OF THE MAIN ROUTE SHALL BE PROTECTED BY BLOCKING WITH TYPE III BARRICADES, 1/2 OF THE CROSS SECTION OF THE CLOSED PORTION.
3. CONES MAY BE SUBSTITUTED FOR BARRICADES OR DRUMS AT HALF THE SPACING DURING DAY OPERATIONS. CONES SHALL BE A MINIMUM OF 28 (710) IN HEIGHT.
4. WHEN THE SIDE ROAD LIES BETWEEN THE BEGINNING OF THE MAINLINE SIGNING AND THE WORK ZONE, A SINGLE HEADED ARROW (M6-1) SHALL BE USED IN LIEU OF THE DOUBLE HEADED ARROW (M6-4).
5. WHEN WORK IS BEING PERFORMED ON A SIDE ROAD OR DRIVEWAY, FOLLOW THE APPLICABLE STANDARD(S). THE DIRECTIONAL ARROW (M6-1 OR M6-4) SHALL BE COVERED OR REMOVED WHEN NO LONGER CONSISTENT WITH THE TRAFFIC CONTROL SET-UP.
6. ADVANCE WARNING SIGNS ARE TO BE OMITTED ON DRIVEWAYS UNLESS OTHERWISE SPECIFIED IN THE PLANS OR BY THE ENGINEER.
7. THE TRAFFIC CONTROL AND PROTECTION FOR SIDE ROADS, INTERSECTIONS, AND DRIVEWAYS SHALL BE INCLUDED IN THE COST OF SPECIFIED TRAFFIC CONTROL STANDARDS OR ITEMS.

All dimensions are in inches (millimeters) unless otherwise shown.

MODEL: Default
FILE: STATE_C:\pwworkspace\pwworkspace\622715533\01140211\11111111.dgn

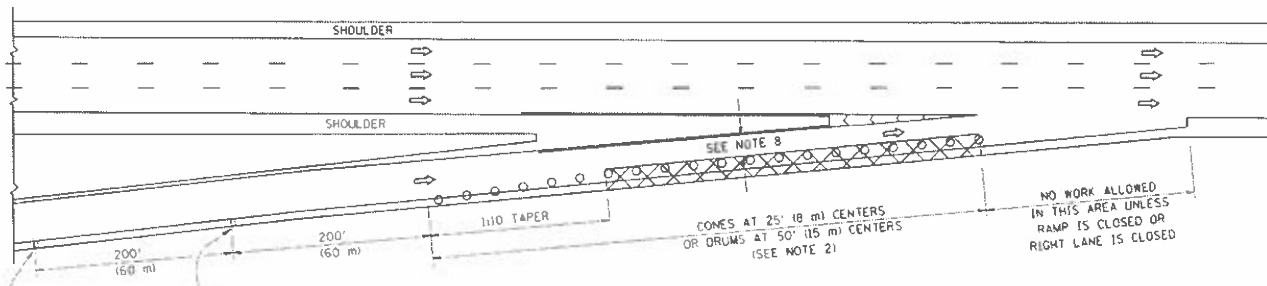
USER NAME = Melissa DeRosario	DESIGNED -	REVISED -
PLOT SCALE = 100.0474' / in.	DRAWN -	REVISED -
PLOT DATE = 10/26/2022	CHECKED -	REVISED -
	DATE -	REVISED -

**STATE OF ILLINOIS
DEPARTMENT OF TRANSPORTATION**

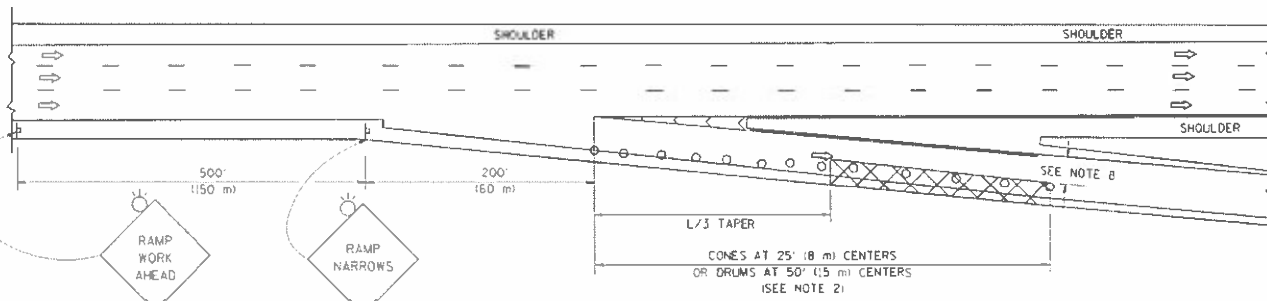
TRAFFIC CONTROL AND PROTECTION FOR SIDE ROADS, INTERSECTIONS, AND DRIVEWAYS (TC-10)			
SCALE:	SHEET	OF SHEETS	STA. TO STA.

F.A. RTE.	SECTION	COUNTY	TOTAL SHEETS	SHEET NO.
VAR	2022 TREE 01	VARIOUS	13	12
			CONTRACT NO. 62T89	
ILLINOIS FED. AID PROJECT				

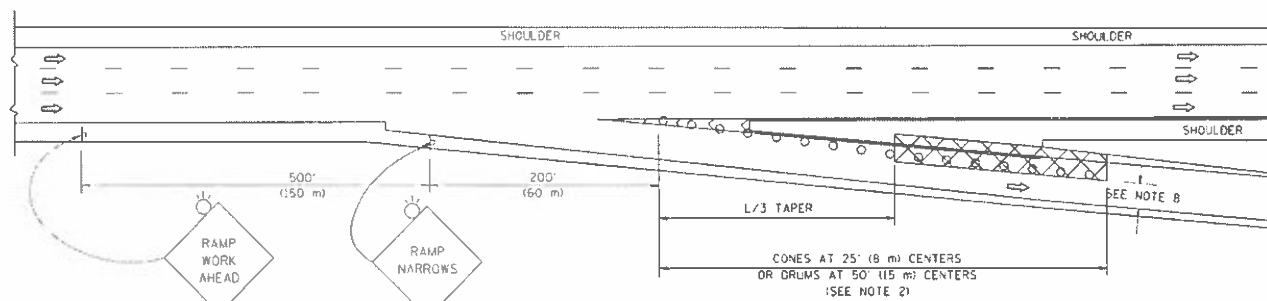
PARTIAL RAMP CLOSURE DETAILS



TYPICAL ENTRANCE RAMP



TYPICAL EXIT RAMP



TYPICAL EXIT RAMP

SYMBOLS

- ACTIVE WORK AREA
- SIGN ON PORTABLE OR PERMANENT SUPPORT
- FLAGGER WITH CONTROL SIGN
- TYPE II BARRICADE OR DRUM
- CONE, DRUM OR BARRICADE
- IMPACT ATTENUATOR OF TYPE AND TEST LEVEL SPECIFIED

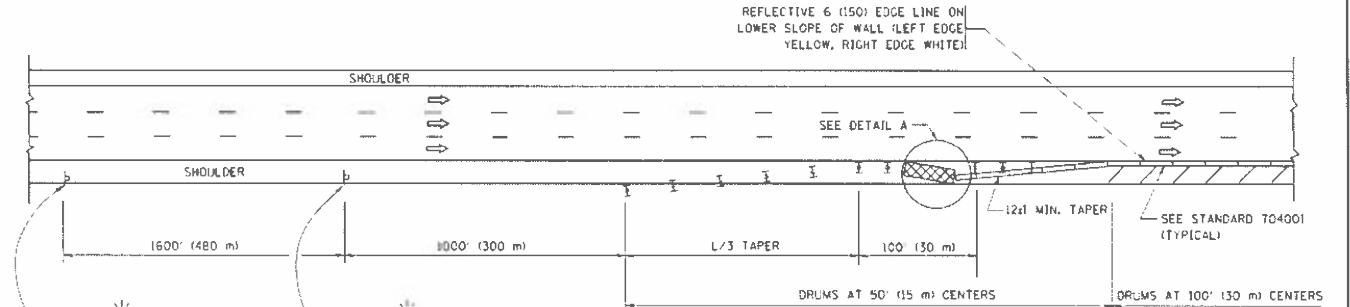
GENERAL NOTES

1. THE "L" DISTANCE EQUALS:

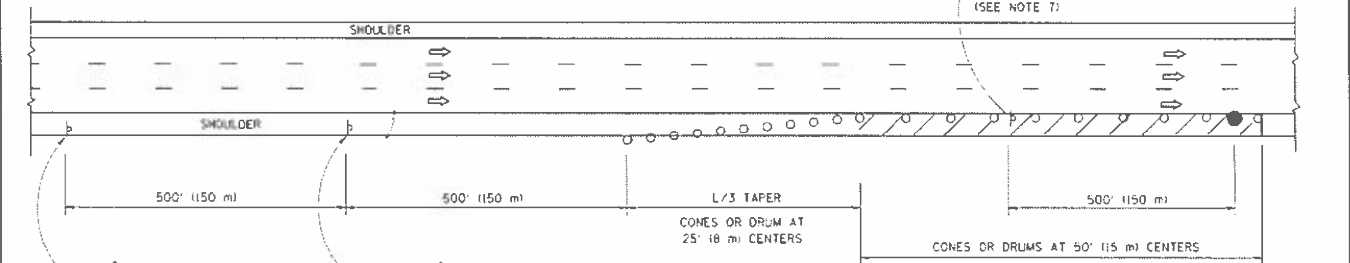
SPEED LIMIT	METRIC FORMULAS	ENGLISH FORMULAS
45 mph (80 km/h) OR GREATER	$L=0.65(W)(S)$	$L=(W)(S)$

 W = WIDTH OF OFFSET IN FEET (METERS)
 S = NORMAL POSTED SPEED MPH (KM/H)
2. TYPE II BARRICADES OR DRUMS ARE REQUIRED FOR ALL NIGHTTIME CLOSURES. TYPE II BARRICADES OR DRUMS WITH MONODIRECTIONAL STEADY BURN LIGHTS ARE REQUIRED FOR DELINEATING OBSTACLES, EXCAVATIONS, OR HAZARDS EXCEEDING 100 FT (30m) IN LENGTH AT NIGHT.
3. ALL SIGNS SHALL BE POST MOUNTED IF THE CLOSURE TIME EXCEEDS FOUR DAYS.
4. FLASHING LIGHTS SHALL BE USED DURING THE HOURS OF DARKNESS AND SHALL BE INSTALLED ABOVE THE FIRST TWO SETS OF SIGNS.

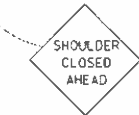
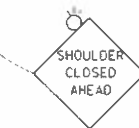
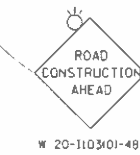
SHOULDER CLOSURE DETAILS



PERMANENT SHOULDER CLOSURE



DAYTIME SHOULDER CLOSURE



ARRAY DESIGN PER MANUFACTURER TO BE NCHRP 350/MASH COMPLIANT.

DETAIL "A"
IMPACT ATTENUATOR, TEMPORARY
(SEE NOTE 5)

- THIS DETAIL IS USED WHERE:
1. VEHICLES, EQUIPMENT, WORKERS OR THEIR ACTIVITIES ENCRANCH IN AN AREA CLOSER THAN 15' (4.5 m) TO THE EDGE OF PAVEMENT FOR A PERIOD IN EXCESS OF 15 MINUTES.

ALL DIMENSIONS ARE IN INCHES (MILLIMETERS) UNLESS OTHERWISE SHOWN.

USER NAME	= Melissa DeRosario
PLOT SCALE	= 1/8" = 1'-0" (1:24)
PLOT DATE	= 10/26/2022

DESIGNED	-
DRAWN	-
CHECKED	-
DATE	-

REVISED	-
REVISED	-
REVISED	-
REVISED	-

STATE OF ILLINOIS
DEPARTMENT OF TRANSPORTATION

TRAFFIC CONTROL DETAIL FOR FREEWAY SHOULDER
CLOSURES AND PARTIAL RAMP CLOSURE (TC-17)

SCALE: SHEET OF SHEETS STA. TO STA.

F.A. RTE	SECTION	COUNTY	TOTAL SHEETS	SHEET NO.
VAR	2022 TREE 01	VARIOUS	13	13
CONTRACT NO. 62T89				
ILLINOIS FED. AID PROJECT				