

STATE OF ILLINOIS
DEPARTMENT OF TRANSPORTATION

F.A.P. RTE.	SECTION	COUNTY	TOTAL SHEETS	SHEET NO.
510	(119BR) BRR, BJR, I	HANCOCK	12	1
		ILLINOIS	CONTRACT NO. 72881	

PROPOSED HIGHWAY PLANS

FAP ROUTE 510 (IL 96) SECTION (119BR) BRR, BJR, I BRIDGE JOINT REPLACEMENT HANCOCK COUNTY

C-96-044-22

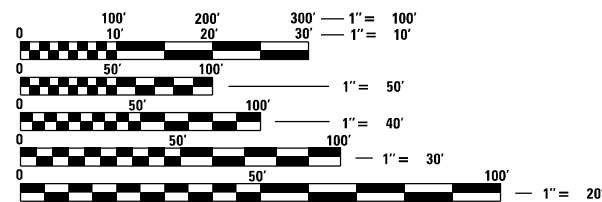
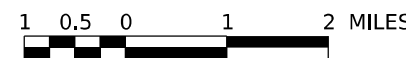
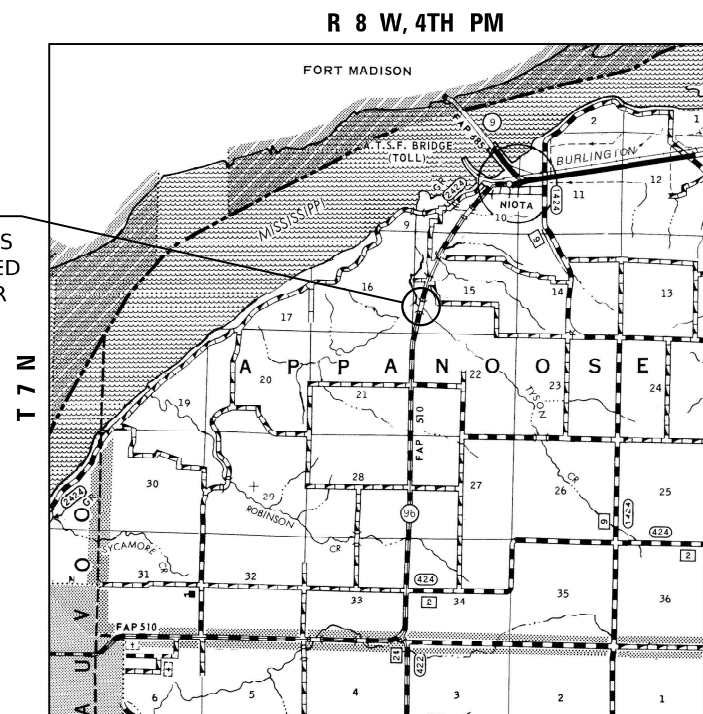
D-96-036-22

INDEX OF SHEETS

- 1 COVER SHEET
- 2 GENERAL NOTES AND COMMITMENTS
- 3 SUMMARY OF QUANTITIES
- 4 SCHEDULES OF QUANTITIES
- 5 TYPICAL SECTIONS
- 6 STAGING PLAN
- 7-12 STRUCTURE PLANS



EXISTING SN 034-0054
SINGLE SPAN 67'-8" BK-BK ABUTMENTS
33" P.P.C DECK BEAMS ON REINFORCED
CONCRETE CLOSED ABUTMENTS OVER
TYSON CREEK



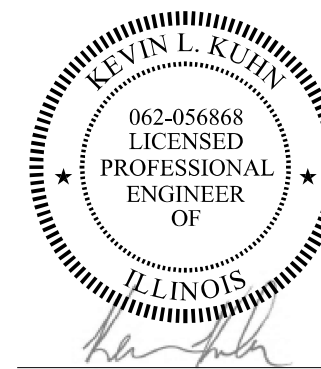
FULL SIZE PLANS HAVE BEEN PREPARED USING STANDARD ENGINEERING SCALES, REDUCED SIZED PLANS WILL NOT CONFORM TO STANDARD SCALES. IN MAKING MEASUREMENTS ON REDUCED PLANS, THE ABOVE SCALES MAY BE USED.

J.U.L.I.E.
JOINT UTILITY LOCATION INFORMATION FOR EXCAVATION
1-800-892-0123
OR 811

PROJECT ENGINEER: BRIAN LANINGHAM 217-782-6990
PROJECT MANAGER: CONSULTANT 217-782-6990

CONTRACT NO. 72881

GROSS LENGTH = 22 FT. = 0.004 MILE
NET LENGTH = 22 FT. = 0.004 MILE



DATE: AUGUST 31 20 23
EXPIRES: NOVEMBER 30 20 23



KUHN & TRELLO
CONSULTING ENGINEERS
A Limited Liability Company
100 N. 7th Street, 3rd Floor
Springfield, IL 62702
Phone: 217-782-9044
Professional Design Firm No. 184-006516

STATE OF ILLINOIS
DEPARTMENT OF TRANSPORTATION

SUBMITTED September 9 20 22

John P. Meyer
REGIONAL ENGINEER

December 9, 2022
Scott A. Erb
ENGINEER OF DESIGN AND ENVIRONMENT

December 9, 2022
Stephen M. Spauld
DIRECTOR OF HIGHWAYS PROJECT IMPLEMENTATION

PRINTED BY THE AUTHORITY
OF THE STATE OF ILLINOIS

GENERAL NOTES

1. ALL SAW CUTS NECESSARY TO COMPLETE THE WORK DETAILED IN THESE PLANS SHALL BE INCLUDED IN THE COST FOR THE VARIOUS PAY ITEMS INVOLVED
2. THE CONTRACTOR SHALL SUBMIT A SEQUENCE OF CONSTRUCTION FOR APPROVAL TO THE RESIDENT ENGINEER BEFORE THIS PROJECT IS STARTED.
3. IDOT DISTRICT 6 OPERATIONS TRAFFIC SIGNAL SECTION SHALL BE CONTACTED AT (217) 785-5306 FOR CONTROLLER PROGRAMMING AND TIMING APPROVAL PRIOR TO ACTIVATING THE TEMPORARY BRIDGE TRAFFIC SIGNALS.


COMMITMENTS


THERE ARE NO COMMITMENTS.


LIST OF STANDARDS

000001-08	STANDARD SYMBOLS, ABBREVIATIONS AND PATTERNS
001001-02	AREAS OF REINFORCEMENT BARS
001006	DECIMAL OF AN INCH AND OF A FOOT
420001-10	PAVEMENT JOINTS
701001-02	OFF-ROAD OPERATIONS, 2L, 2W, MORE THAN 15' (4.5 M) AWAY
701006-05	OFF-ROAD OPERATIONS, 2L, 2W, 15' (4.5 M) TO 24" (600 MM) FROM PAVEMENT EDGE
701301-04	LANE CLOSURE, 2L, 2W, SHORT TIME OPERATIONS
701316-13	LANE CLOSURE, 2L, 2W, BRIDGE REPAIR, FOR SPEEDS ≥45 MPH
701901-08	TRAFFIC CONTROL DEVICES
780001-05	TYPICAL PAVEMENT MARKINGS

**STATE OF ILLINOIS
DEPARTMENT OF TRANSPORTATION
DIVISION OF HIGHWAYS
DISTRICT 6**

EXAMINED July 12 2022

ENGINEER OF OPERATIONS

EXAMINED August 1 2022

ENGINEER OF PROJECT IMPLEMENTATION

EXAMINED August 22 2022

ENGINEER OF PROGRAM DEVELOPMENT

REV. - MS

MODEL: Default
FILE NAME: I:\21046.030 IDOT DB - FTB 199-030 - WOOD - Hancock County 72881\CA030DB\CAD\sheet\5272881.sht-CRD-generals.dgn



USER NAME = myoung	DESIGNED - JS	REVISED -
PLOT SCALE = 2.000 / in.	DRAWN - MMY	REVISED -
PLOT DATE = 8/30/2022	CHECKED - JS	REVISED -
	DATE - 04/21/2022	REVISED -

**STATE OF ILLINOIS
DEPARTMENT OF TRANSPORTATION**

**GENERAL NOTES AND
COMMITMENTS**

SCALE: SHEET 1 OF 1 SHEETS STA. TO STA.

F.A.P. RTE.	SECTION	COUNTY	TOTAL SHEETS	SHEET NO.
510	(119BR) BRR, BJR, I	HANCOCK	12	2
ILLINOIS FED. AID PROJECT			CONTRACT NO. 72881	

6-00634-0000

100% STATE
BRIDGE
0047
SN 034-0054

CODE NO.	ITEM	UNIT	TOTAL QUANTITY	
50102400	CONCRETE REMOVAL	CU YD	2.7	2.7
50300255	CONCRETE SUPERSTRUCTURE	CU YD	2.6	2.6
50300300	PROTECTIVE COAT	SQ YD	8	8
50800205	REINFORCEMENT BARS, EPOXY COATED	POUND	410	410
50800515	BAR SPLICERS	EACH	7	7
52000110	PREFORMED JOINT STRIP SEAL	FOOT	39	39
67100100	MOBILIZATION	L SUM	1	1
70100100	TRAFFIC CONTROL AND PROTECTION, STANDARD 701316	EACH	1	1
70106500	TEMPORARY BRIDGE TRAFFIC SIGNALS	EACH	1	1
70106700	TEMPORARY RUMBLE STRIPS	EACH	6	6
70107025	CHANGEABLE MESSAGE SIGN	CAL DA	30	30
70300100	SHORT TERM PAVEMENT MARKING	FOOT	48	48
70300150	SHORT TERM PAVEMENT MARKING REMOVAL	SQ FT	16	16
* 78001120	PAINT PAVEMENT MARKING - LINE 5"	FOOT	394	394

* SPECIALTY ITEM

6-00634-0000

100% STATE
BRIDGE
0047
SN 034-0054

CODE NO.	ITEM	UNIT	TOTAL QUANTITY	
78300201	PAVEMENT MARKING REMOVAL - GRINDING	SQ FT	164	164
X0323992	HELICAL GROUND ANCHORS	EACH	2	2
X7200201	WIDTH RESTRICTION SIGNING	L SUM	1	1

MODEL: Default
FILE NAME: 2021046.03D IDOT DB - FTB 199-039 - W010 - Hancock County 72881\CAD\Drawings\CAD\Drawings\72881-199-039-000-500.dgn



USER NAME = myoung
 DESIGNED - JS
 DRAWN - MMY
 CHECKED - JS
 DATE - 04/21/2022
 PLOT SCALE = 2.000 / in.
 PLOT DATE = 8/30/2022
 109 N. 7th Street, 3rd Floor
 Springfield, IL 62701
 Phone: 217-639-0044
 Professional Design Firm No. 184-006516

REVISED -
 REVISED -
 REVISED -
 REVISED -

STATE OF ILLINOIS
DEPARTMENT OF TRANSPORTATION

SUMMARY OF QUANTITIES

SCALE: SHEET 1 OF 1 SHEETS STA. TO STA.

F.A.P. RTE.	SECTION	COUNTY	TOTAL SHEETS	SHEET NO.
510	(119BR) BRR, BJR, I	HANCOCK	12	3
CONTRACT NO. 72881			ILLINOIS FED. AID PROJECT	

PAVEMENT MARKING SCHEDULE

LOCATION		COMMENT	SHORT TERM PAVEMENT MARKING	SHORT TERM PAVEMENT MARKING REMOVAL	PAINT PAVEMENT MARKING - LINE 5"		PAVEMENT MARKING REMOVAL - GRINDING
					WHITE	YELLOW	
STATION TO	STATION		70300100 FOOT	70300150 SQ FT	78001120		78300201 SQ FT
91+36	92+73	LT EDGE			137		57
91-58	92+95	RT EDGE			137		57
89+74	94+63	CENTERLINE	48	16		120	50
TOTAL THIS SHEET			48	16	394		164

MODEL Path: \\...
FILE NAME: 20230406_03D_IDOT_D6 - PTB_1994030 - W03D - Hancock County 72881\CADD\Draw\CAD\sheet\0672881-1-1-CORP-sched.lps.dwg



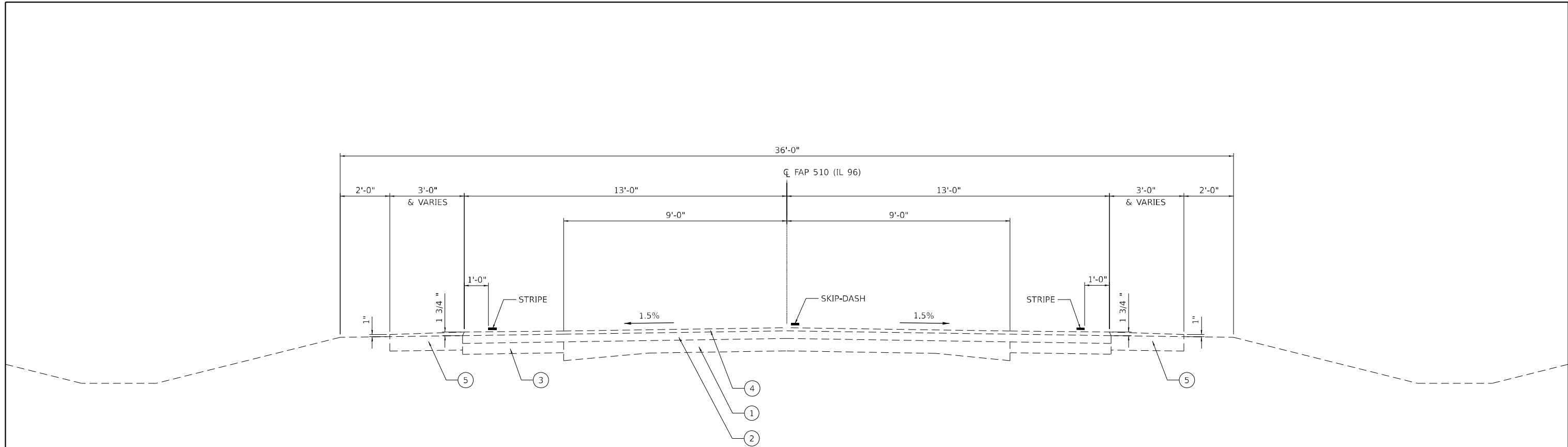
USER NAME = myoung	DESIGNED - JS	REVISED -
PLOT SCALE = 2,000' / in.	DRAWN - MMY	REVISED -
PLOT DATE = 8/30/2022	CHECKED - JS	REVISED -
	DATE - 04/21/2022	REVISED -

**STATE OF ILLINOIS
DEPARTMENT OF TRANSPORTATION**

SCHEDULES OF QUANTITIES

SCALE: SHEET 1 OF 1 SHEETS STA. TO STA.

F.A.P. RTE.	SECTION	COUNTY	TOTAL SHEETS	SHEET NO.
510	(119BR) BRR, BJR, I	HANCOCK	12	4
CONTRACT NO. 72881			ILLINOIS FED. AID PROJECT	



TYPICAL SECTION (SN 034-0054)

STA. 90+80.00 TO STA. 91+47.50 RT/LT
 BRIDGE SN 034-0054 OMISSION/REPAIR STA. 91+47.50 TO STA. 92+15.16
 STA. 92+15.16 TO STA. 92+80 RT/LT

- ① EXISTING CONCRETE PAVEMENT
- ② EXISTING HOT-MIX ASPHALT OVERLAY - 5 1/4" & VARIES
- ③ EXISTING HOT-MIX ASPHALT WIDENING - 9"
- ④ EXISTING HOT-MIX ASPHALT SURFACE COURSE, SUPERPAVE, N50 (1 1/2")
- ⑤ EXISTING HOT-MIX ASPHALT SHOULDERS, 8"

MODEL: D:\p\h\h...
 FILE NAME: 2021046.03D IDOT D6 - PTB 1994930 - W03D - Hancock County 72881\CADD\Drawn\CAD\sheet\0672881-1-1-CORP-TYPICAL.dwg

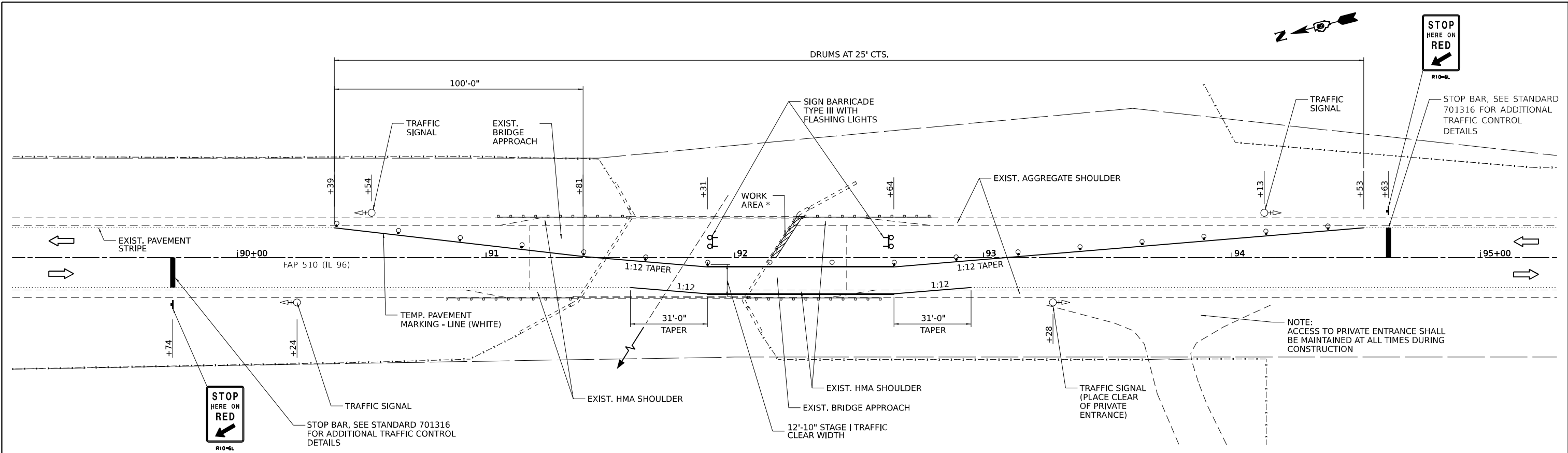


USER NAME = myoung	DESIGNED - JS	REVISED -
	DRAWN - MMY	REVISED -
PLOT SCALE = 4:0" = 1" / in.	CHECKED - JS	REVISED -
PLOT DATE = 8/30/2022	DATE - 04/21/2022	REVISED -

**STATE OF ILLINOIS
DEPARTMENT OF TRANSPORTATION**

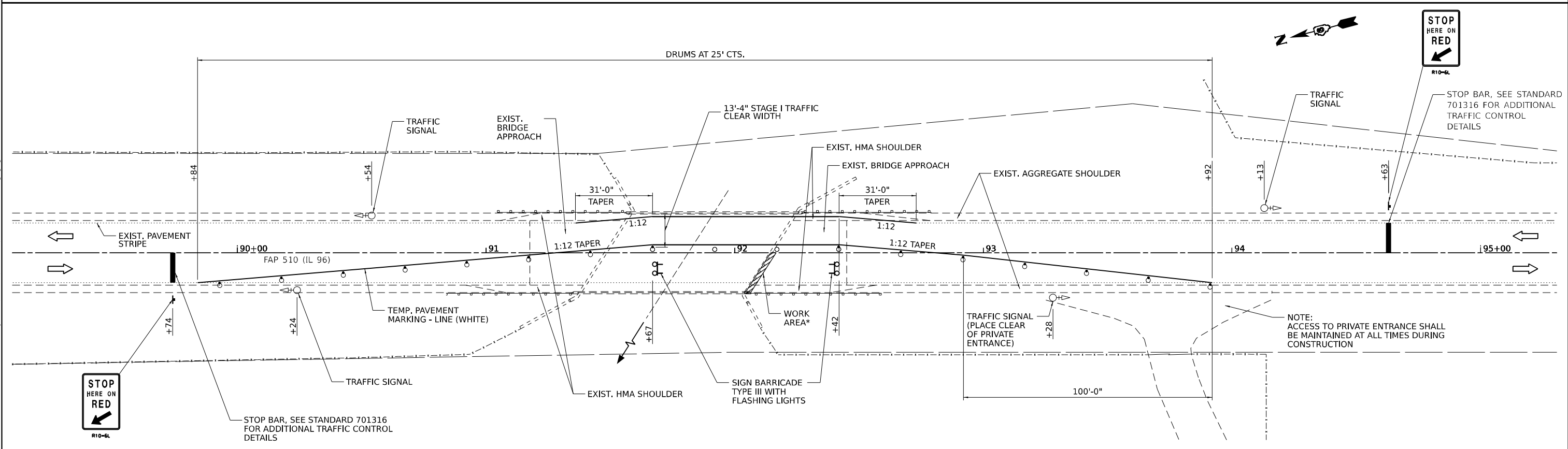
TYPICAL SECTION			
SCALE:	SHEET 1	OF 1 SHEETS	STA. TO STA.

F.A.P. RTE.	SECTION	COUNTY	TOTAL SHEETS	SHEET NO.
510	(119BR) BRR, BJR, I	HANCOCK	12	5
CONTRACT NO. 72881				
ILLINOIS FED. AID PROJECT				



STAGE I TRAFFIC

* CONTRACTOR SHALL PLACE A STEEL PLATE OVER THE JOINT OPENING WHEN NOT WORKING.



STAGE II TRAFFIC

* CONTRACTOR SHALL PLACE A STEEL PLATE OVER THE JOINT OPENING WHEN NOT WORKING.



USER NAME = myoung
 DESIGNED - JS
 DRAWN - MMY
 CHECKED - JS
 DATE - 04/21/2022
 PLOT SCALE = 40,000' / in.
 PLOT DATE = 8/30/2022

DESIGNED - JS
 DRAWN - MMY
 CHECKED - JS
 DATE - 04/21/2022

REVISED -
 REVISED -
 REVISED -
 REVISED -

STATE OF ILLINOIS
DEPARTMENT OF TRANSPORTATION

STAGE CONSTRUCTION PLAN

SCALE: SHEET 1 OF 1 SHEETS STA. TO STA.

F.A.P. RTE.	SECTION	COUNTY	TOTAL SHEETS	SHEET NO.
510	(119) BJR	HANCOCK	11	6
CONTRACT NO. 72881			ILLINOIS FED. AID PROJECT	

MODEL: Default
 FILE NAME: I:\2022\046_03D_IDOT_D6 - PFB_1394030 - W03D - Hancock County 72881\CADD\Drawings\Sheet\0672881-11-CORP-stage1.dwg

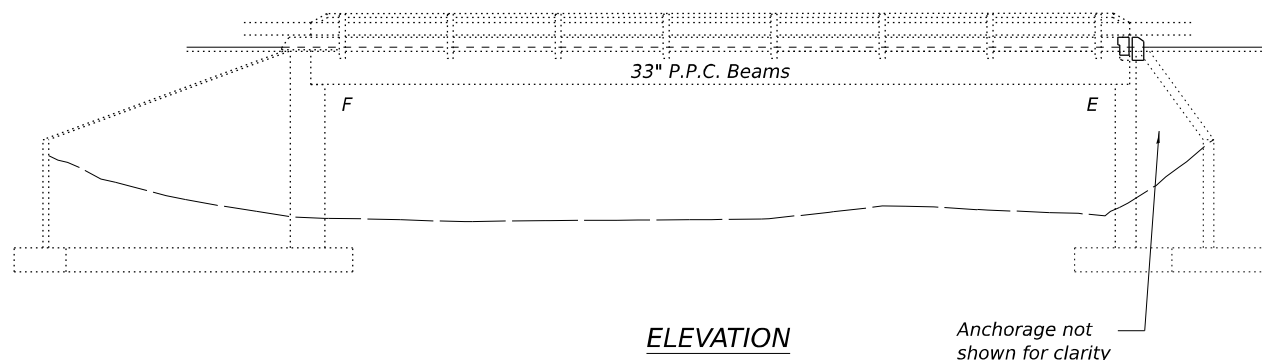
Existing Structure:

SN 034-00547 is a single span 67'-8" bk. to bk. abutments, 33'-0" O. to O. deck.
 Superstructure is 33" PPC deck beams on reinforced concrete closed abutments.
 Built in 1977.

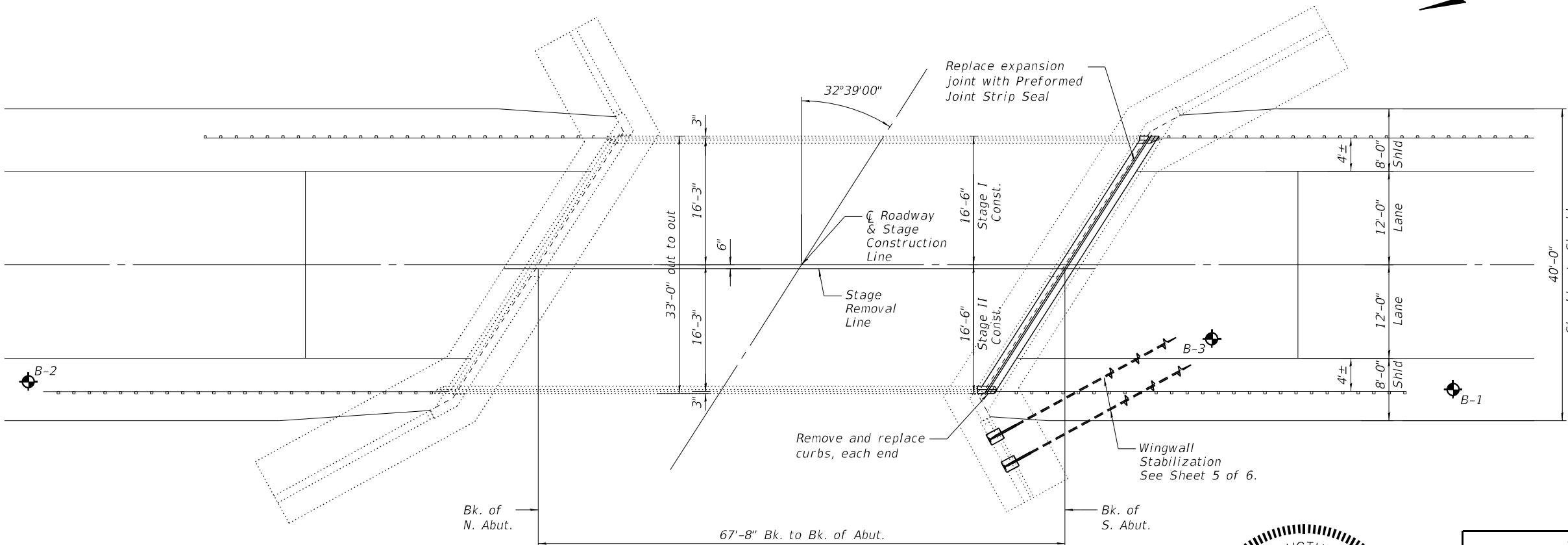
Replace polymer concrete and silicone expansion joint seal at South Abutment with
 Preformed Joint Strip Seal.

GENERAL NOTES

All structural steel shall conform to AASHTO Classification M-270 Gr. 50, unless otherwise noted.
 Fasteners shall be 3/4" Ø, open holes 13/16" Ø, unless otherwise noted.
 Plan dimensions and details relative to existing plans are subject to nominal construction variations. The Contractor shall field verify existing dimensions and details affecting new construction and make necessary approved adjustments prior to construction or ordering of materials. Such variations shall not be cause for additional compensation for a change in scope of the work, however, the Contractor will be paid for the quantity actually furnished at the unit price bid for the work.
 Reinforcement bars designated (E) shall be epoxy coated.
 Existing reinforcement bars extending into the removal area shall be cleaned, straightened and incorporated into the new construction. Any reinforcement bars that are damaged during concrete removal shall be replaced with an approved bar splicer or anchorage system. Cost included with Concrete Removal.
 Joint openings shall be adjusted according to Article 520.04 of the Std. Specs. when the deck is poured at an ambient temperature other than 50° F.
 For Staging Details, see Sheet 2 of 6.
 The Contractor shall use extreme care during concrete removal operations so as not to damage the existing PPC Deck Beams.
 The deck surface shall have its final finish tined according to Article 420.09(e)(1) of the Standard Specifications. Cost included with Concrete Superstructure.
 For Soil boring logs, see Sheet 6 of 6.



ELEVATION



PLAN

TOTAL BILL OF MATERIALS

ITEM	UNIT	QUANTITY
Concrete Removal	Cu. Yd.	2.7
Concrete Superstructure	Cu. Yd.	2.6
Reinforcement Bars, Epoxy Coated	Pound	410
Bar Splicers	Each	7
Preformed Joint Strip Seal	Foot	39
* Protective Coat	Sq. Yd.	8
Helical Ground Anchors	Each	2

* On new concrete surfaces



Steven Negangard
 Date: August 31, 2022
 Expires: November 30, 2024

MODEL: Default
 FILE NAME: J:\21046.03D IDOT D6 - PTB 199-030 - WO3D - Hancock County 72881\CADDData\CADsheets\034005472881-001-0FRD-GPE.dgn
 12/5/2022 8:28:59 AM

KT KUHN & TRELLO
 CONSULTING ENGINEERS
 A Limited Liability Company
 100 N. 7th Street, 3rd Floor
 Springfield, IL 62701
 Phone: 217-616-0044
 Professional Design Firm No. 284-006516

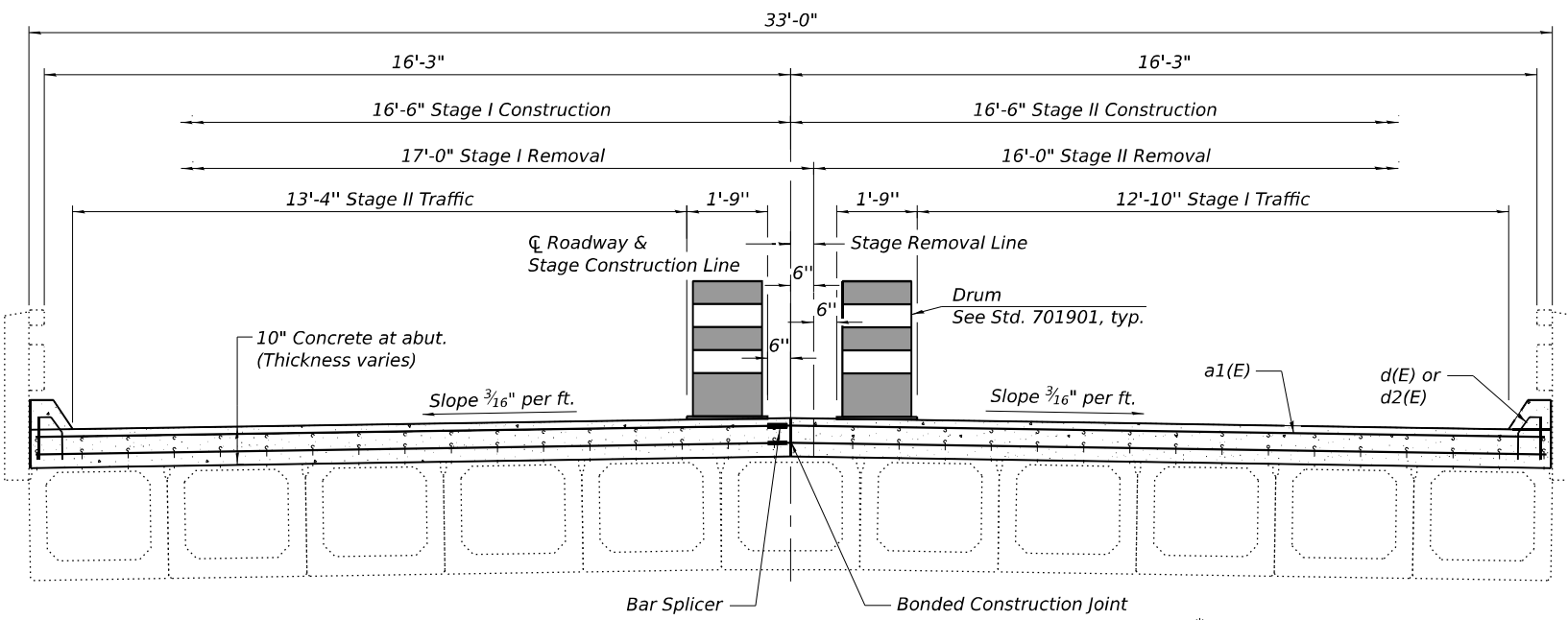
USER NAME =	DESIGNED - SPN	REVISED -
PLOT SCALE =	CHECKED - MJT	REVISED -
PLOT DATE =	DRAWN - MMY	REVISED -
	CHECKED - SPN/MJT	REVISED -

**STATE OF ILLINOIS
 DEPARTMENT OF TRANSPORTATION**

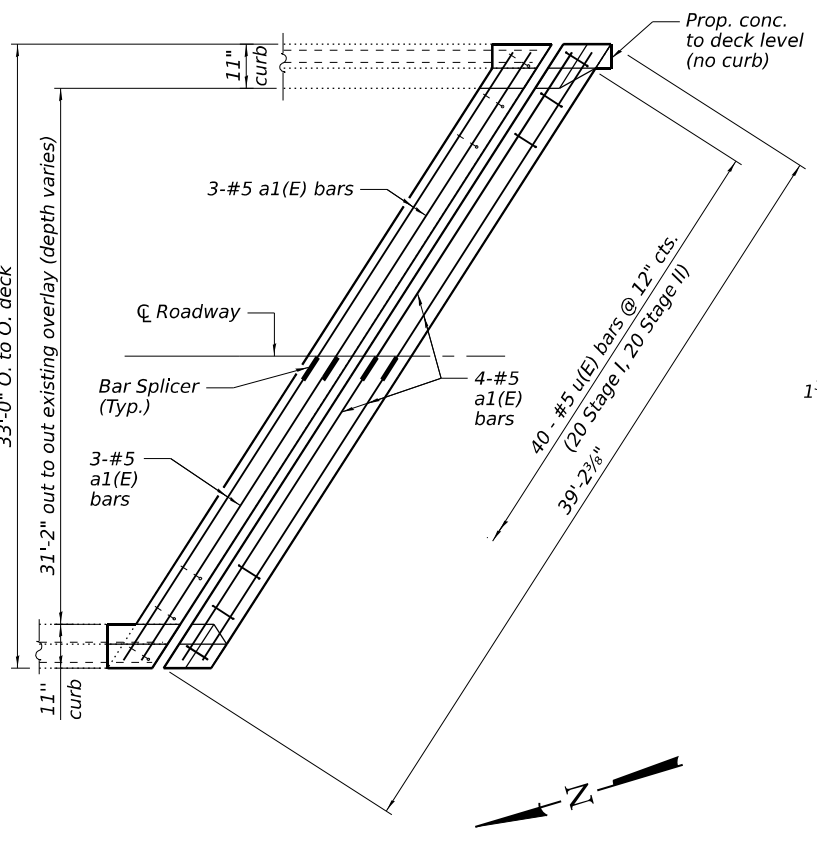
**GENERAL PLAN AND ELEVATION
 STRUCTURE NO. 034-0054**

SHEET 1 OF 6 SHEETS

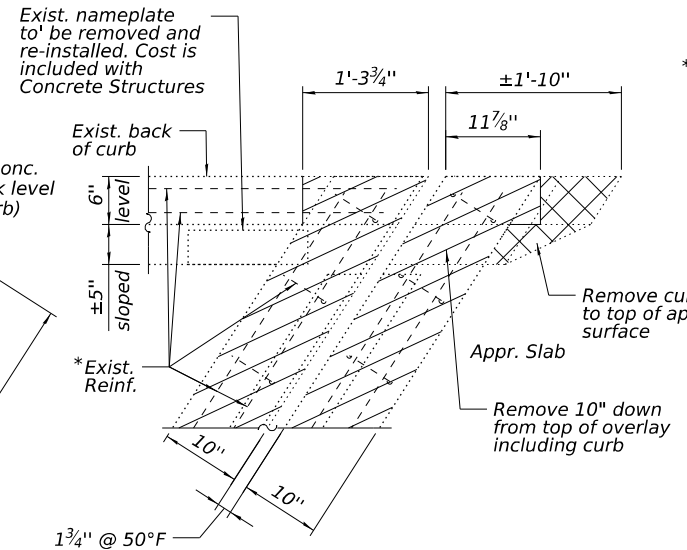
F.A.P. RTE.	SECTION	COUNTY	TOTAL SHEETS	SHEET NO.
510	(119BR) BRR, BJR, I	HANCOCK	12	7
CONTRACT NO. 72881				
ILLINOIS FED. AID PROJECT				



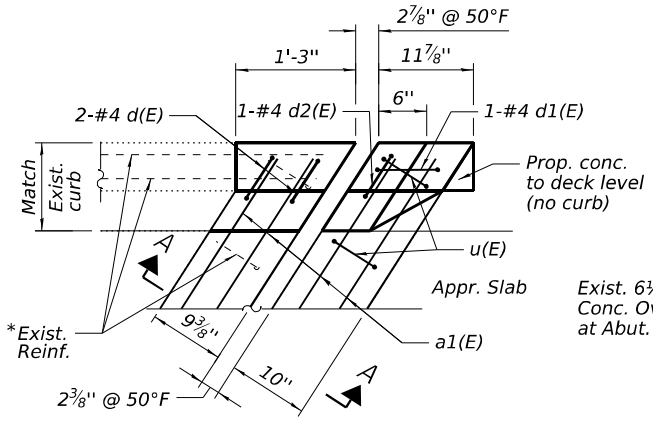
CROSS SECTION AT JOINT REPLACEMENT LOCATIONS
(Looking South)



PROPOSED JOINT PLAN
(South Abutment - showing reinforcement below curb)



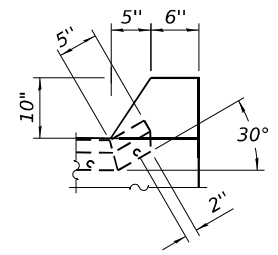
REMOVAL - E. CORNER S. ABUT.
(West end similar)



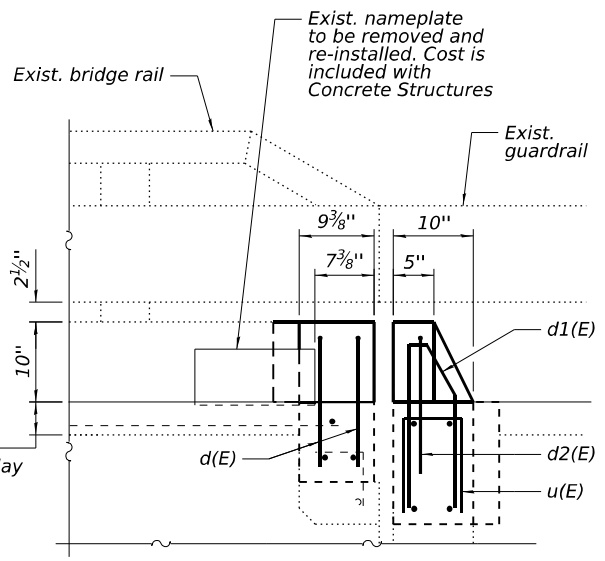
PROPOSED - E. CORNER S. ABUT.
(West end similar)

*Existing reinforcement bars extending into the removal area shall be cleaned, straightened and incorporated into the new construction. Any reinforcement bars that are damaged during concrete removal shall be replaced with an approved bar splicer or anchorage system. Cost included with concrete removal.

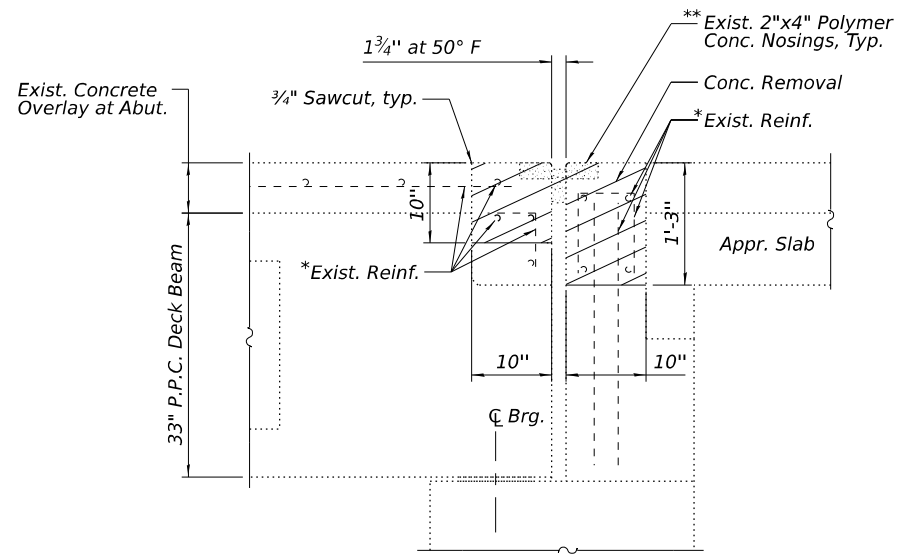
**Cost of Removal of Polymer Concrete included in Concrete Removal



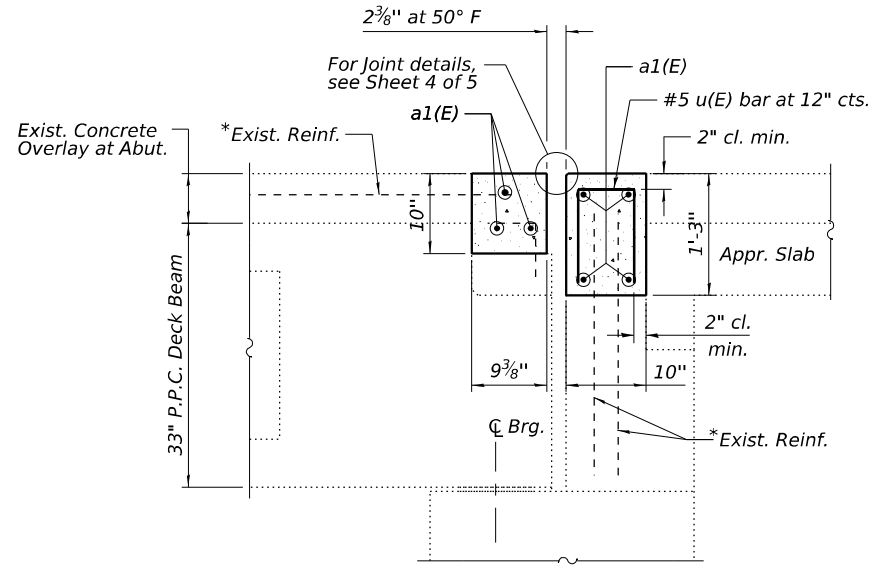
END TREATMENT AT CURB



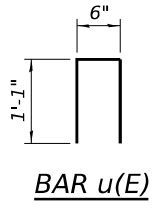
SECTION A-A



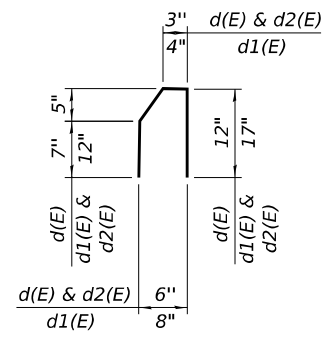
REMOVAL SECTION THRU S. ABUT.



PROPOSED SECTION THRU S. ABUT.



BAR u(E)



BAR d(E), d1(E) & d2(E)

MIN. LAP
#5 bars = 3'-6"

BILL OF MATERIAL

Bar	No.	Size	Length	Shape
a1(E)	14	#5	19'-3"	—
d(E)	4	#4	2'-4"	U
d1(E)	2	#4	3'-3"	U
d2(E)	2	#4	3'-2"	U
u(E)	40	#5	2'-8"	□
Concrete Removal			Cu. Yd.	2.7
Concrete Superstructure			Cu. Yd.	2.6
Reinforcement Bars, Epoxy Coated			Pound	410
Bar Splicers			Each	7

MODEL: Default
FILE NAME: J:\21046.03D IDOT D6 - PTB 199-030 - Hancock County 72881\CADD\CADDsheets\0340054\72881-002-0RD-D-5\staging.dgn
8/30/2022 5:25:25 PM

KUHN & TRELLO
CONSULTING ENGINEERS
A Limited Liability Company
309 N. 7th Street, 3rd Floor
Springfield, IL 62701
Phone: 217-616-0244
Professional Design Firm No. 284-006516

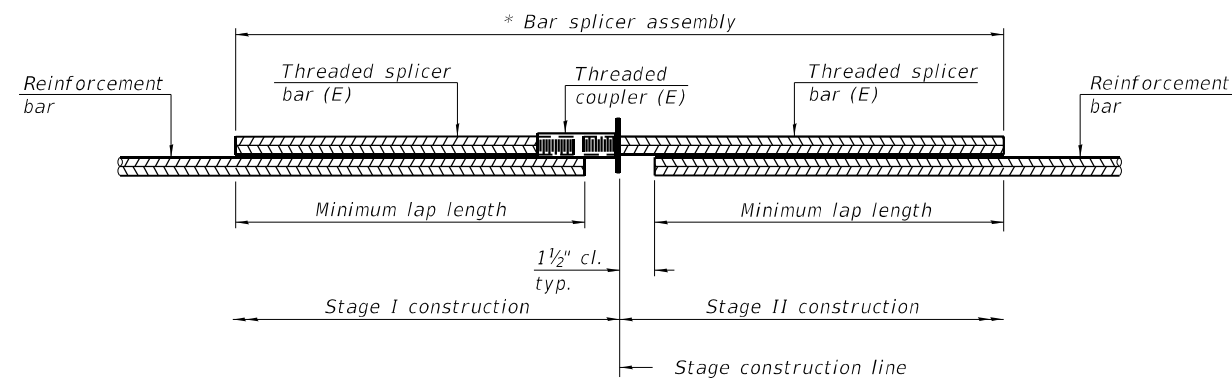
USER NAME =	DESIGNED - SPN	REVISIONS -
PLOT SCALE =	CHECKED - MJT	REVISIONS -
PLOT DATE =	DRAWN - MMY	REVISIONS -
	CHECKED - SPN/MJT	REVISIONS -

STATE OF ILLINOIS
DEPARTMENT OF TRANSPORTATION

STAGING AND JOINT DETAILS
S.N. 034-0054

SHEET 2 OF 6 SHEETS

F.A.P. RITE.	SECTION	COUNTY	TOTAL SHEETS	SHEET NO.
510	(1198R) BRR, BJR, I	HANCOCK	12	8
CONTRACT NO. 72881				
ILLINOIS FED. AID PROJECT				

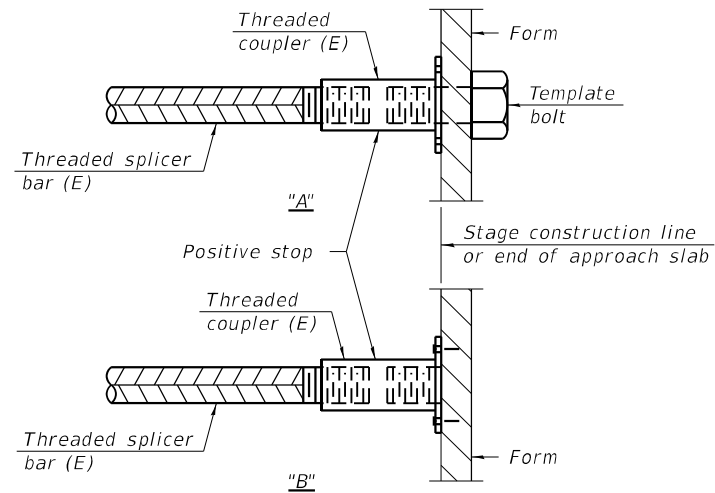


STANDARD BAR SPLICER ASSEMBLY PLAN
 (All components shall be provided from one supplier)

Threaded splicer bar length = min. lap length + 1 1/2" + thread length

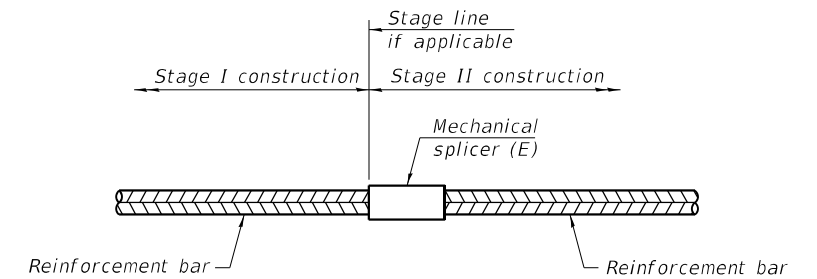
* Epoxy not required on Bar Splicer Assembly components used in conjunction with black bars.

Location	Bar size	No. assemblies required	Minimum lap length
Bridge Deck	#5	3	3'-6"
Hatch block	#5	4	3'-6"



INSTALLATION AND SETTING METHODS

"A" : Set bar splicer assembly by means of a template bolt.
 "B" : Set bar splicer assembly by nailing to wood forms or cementing to steel forms.
 (E) : Indicates epoxy coating.



STANDARD MECHANICAL SPLICER

Location	Bar size	No. assemblies required

Notes:
 Splicer bars shall be deformed with threaded ends and have a minimum 60 ksi yield strength.
 All reinforcement shall be lapped and tied to the splicer bars.
 Bar splicer assemblies shall be epoxy coated according to the requirements for reinforcement bars. See Section 508 of the Standard Specifications.
 See approved list of bar splicer assemblies and mechanical splicers for alternatives.

MODEL: Default
 FILE NAME: J:\21046.03D IDOT D6 - PTB 199-030 - W03D - Hancock County 72881\CADDData\CADSheets\0340054\72881-003-0RD=splicer.dgn
 8/30/2022 5:26:33 PM

BSD-1

1-1-2020



USER NAME =	DESIGNED - SPN	REVISED -
	CHECKED - MJT	REVISED -
PLOT SCALE =	DRAWN - MMY	REVISED -
PLOT DATE =	CHECKED - SPN/MJT	REVISED -

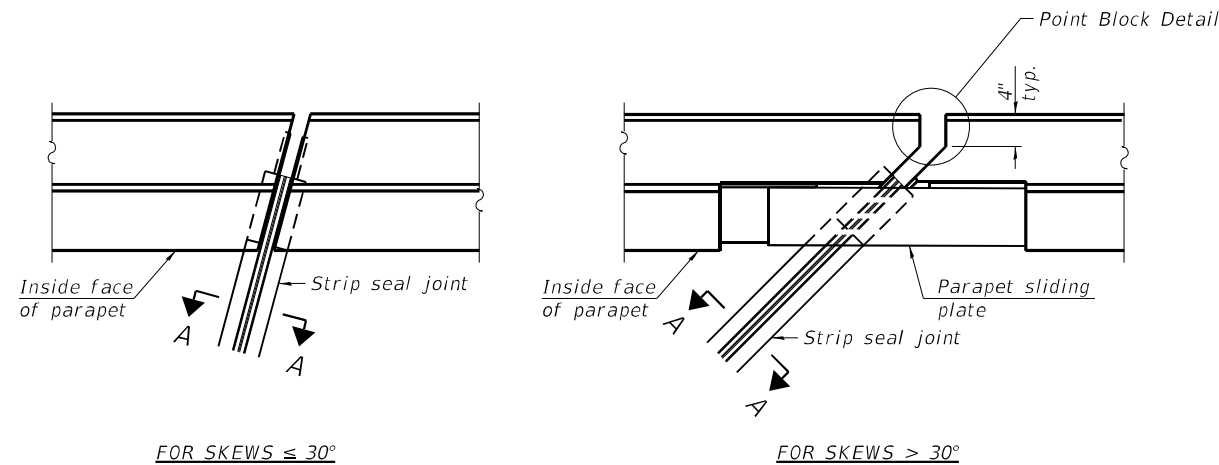
**STATE OF ILLINOIS
 DEPARTMENT OF TRANSPORTATION**

**BAR SPLICER ASSEMBLY AND MECHANICAL SPLICER DETAILS
 STRUCTURE NO. 034-0054**

SHEET 3 OF 6 SHEETS

F.A.P. RTE.	SECTION	COUNTY	TOTAL SHEETS	SHEET NO.
510	(119BR) BRR, BJR, I	HANCOCK	12	9
CONTRACT NO. 72881				

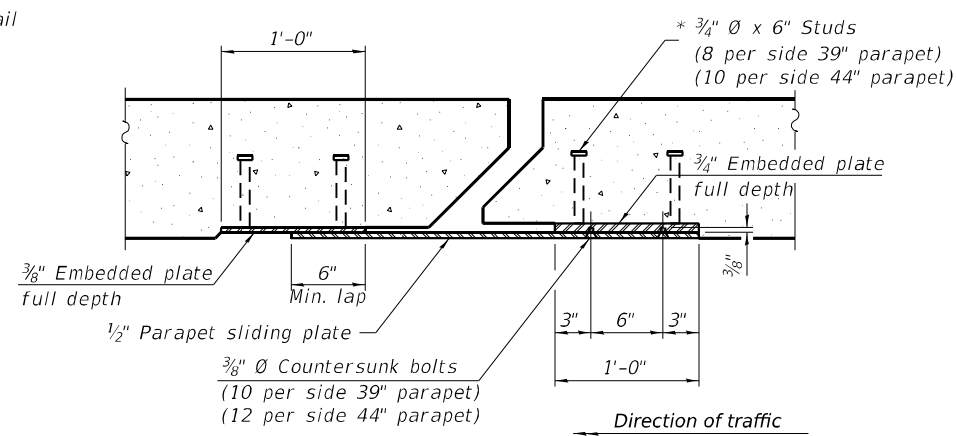
ILLINOIS FED. AID PROJECT



FOR SKEWS $\leq 30^\circ$

PLAN AT PARAPET

FOR SKEWS $> 30^\circ$



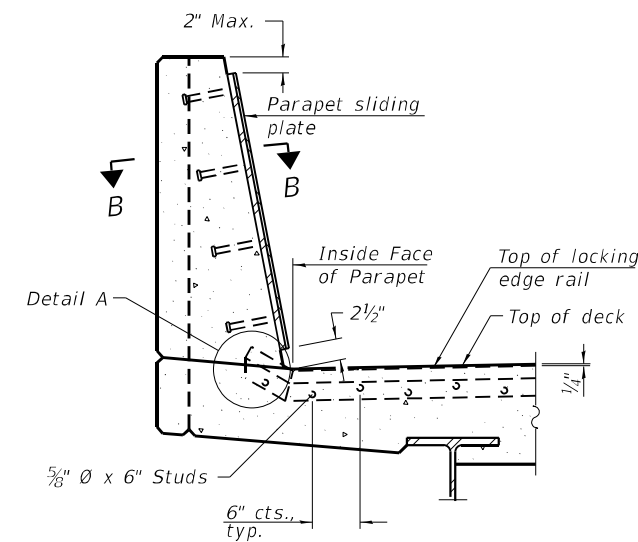
SECTION B-B

Notes:
 The strip seal shall be made continuous and shall have a minimum thickness of 1/4". The configuration of the strip seal shall match the configuration of the locking edge rails. Open or "webbed" strip seal gland configurations are not permitted. The gland shall be sized for a maximum rated movement of 4 inches.
 The locking edge rails depicted are configured for typical applications and are conceptual only. The actual configuration of the locking edge rails and matching strip seal may vary from manufacturer to manufacturer provided they fit the application and meet the minimum anchorage shown. Flanged edge rails, however, will not be allowed. Locking edge rails may exceed the 4 1/2" maximum depth provided the anchorage system is revised according to the manufacturer's recommendation.
 The manufacturer's recommended installation methods shall be followed.

All steel components shall be galvanized after fabrication according to Article 520.03 of the Standard Specifications.
 The Maximum space between locking edge rail segments shall be c" and sealed with a suitable sealant; however, any rail joint within 10' measured perpendicular to the face of the curb or parapet shall be welded as shown in the locking edge rail splice detail.

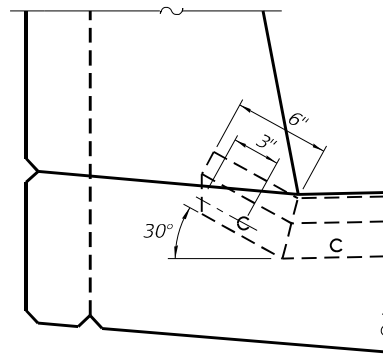
Cost of parapet sliding plates, embedded plates, and anchorage studs included with Preformed Joint Strip Seal.
 39" constant slope barrier shown, 44" constant slope barrier similar as noted.

The concrete opening below the strip seal will vary based on the locking edge rail chosen by the Contractor. Deck and parapet lengths shown elsewhere in the plans are dimensioned to the concrete opening, not the joint opening, and are based on the rolled locking edge rail. If the Contractor elects to use a different locking edge rail, dimensional adjustments may be required. One exception to this would be the strip seal joint at the end of the precast bridge approach slab. For these cases the pavement connector length shall be adjusted, not the length of the bridge approach slab.

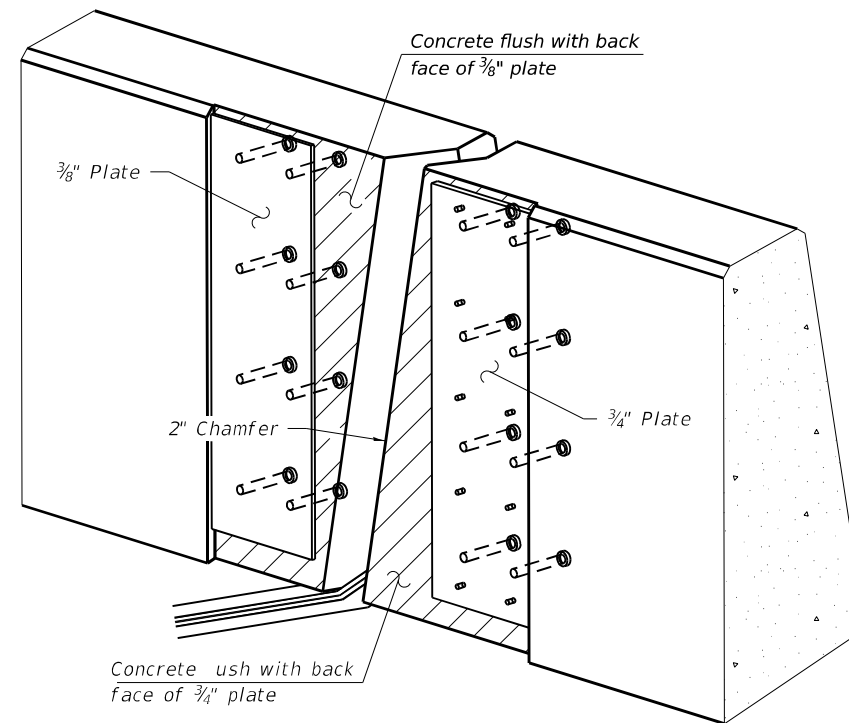


SECTION AT PARAPET

(Skews $> 30^\circ$ shown. Skews $\leq 30^\circ$ similar except as shown in plan view.)

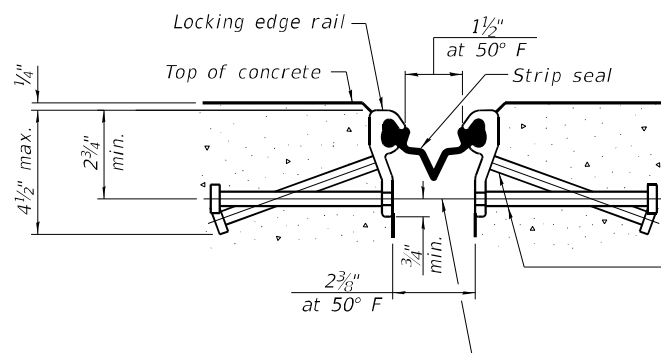


DETAIL A



TRIMETRIC VIEW

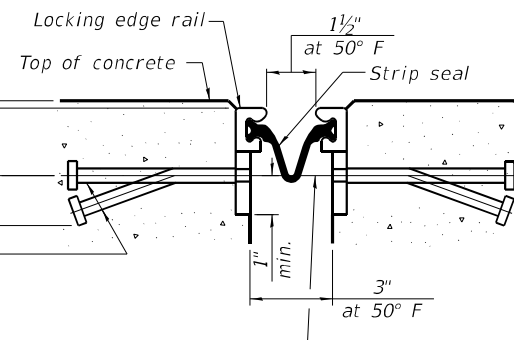
(Showing embedded plates only)



SHOWING ROLLED RAIL JOINT

* 5/8" ϕ x 6" studs @ 6" cts. (alternate angled/bent studs with horizontal studs)

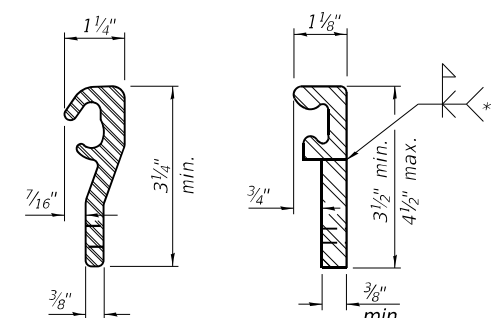
3/8" ϕ threaded rods in 7/16" ϕ holes at $\pm 4'-0"$ cts. for holding the proper joint opening based on the temperature during the deck pour. Place to miss studs. All rods shall be burned, or sawed off flush with the plates after concrete is set.



SHOWING WELDED RAIL JOINT

SECTION A-A

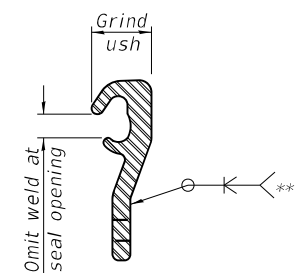
* Granular or solid flux filled headed studs conforming to Article 1006.32 of the Std. Specs., automatically end welded.



LOCKING EDGE RAILS

LOCKING EDGE RAILS

** Back gouge not required if complete joint penetration is verified by mock-up.



LOCKING EDGE RAIL SPLICE

The inside of the locking edge rail groove shall be free of weld residue. Rolled rail shown, welded rail similar.

BILL OF MATERIAL

Item	Unit	Total
Preformed Joint Strip Seal	Foot	39

MODEL: Default
 FILE NAME: J:\21046.03D IDOT D6 - PTB 199-030 - Hancock County 72881\CADDData\CADSheets\0340054\72881-004-0FD-Joint.dgn
 8/30/2022 5:31:41 PM

KUHN & TRELLO
 CONSULTING ENGINEERS
 A Limited Liability Company
 109 N. 7th Street, 3rd Floor
 Springfield, IL 62702
 Phone: 217-616-0244
 Professional Design Firm No. 284-006516

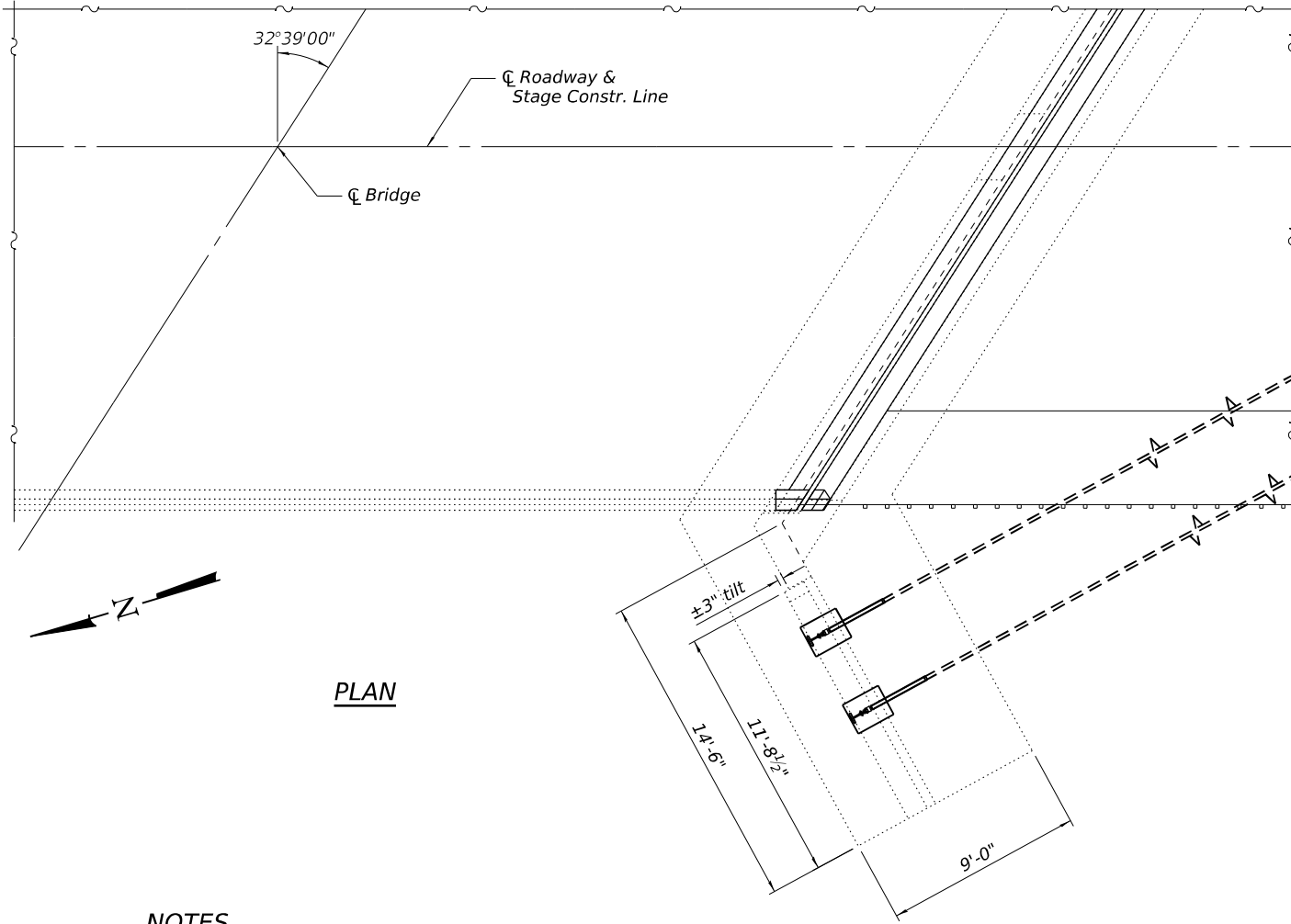
USER NAME =	DESIGNED - SPN	REVISED -
PLOT SCALE =	CHECKED - MJT	REVISED -
PLOT DATE =	DRAWN - MMY	REVISED -
	CHECKED - SPN/MJT	REVISED -

STATE OF ILLINOIS
 DEPARTMENT OF TRANSPORTATION

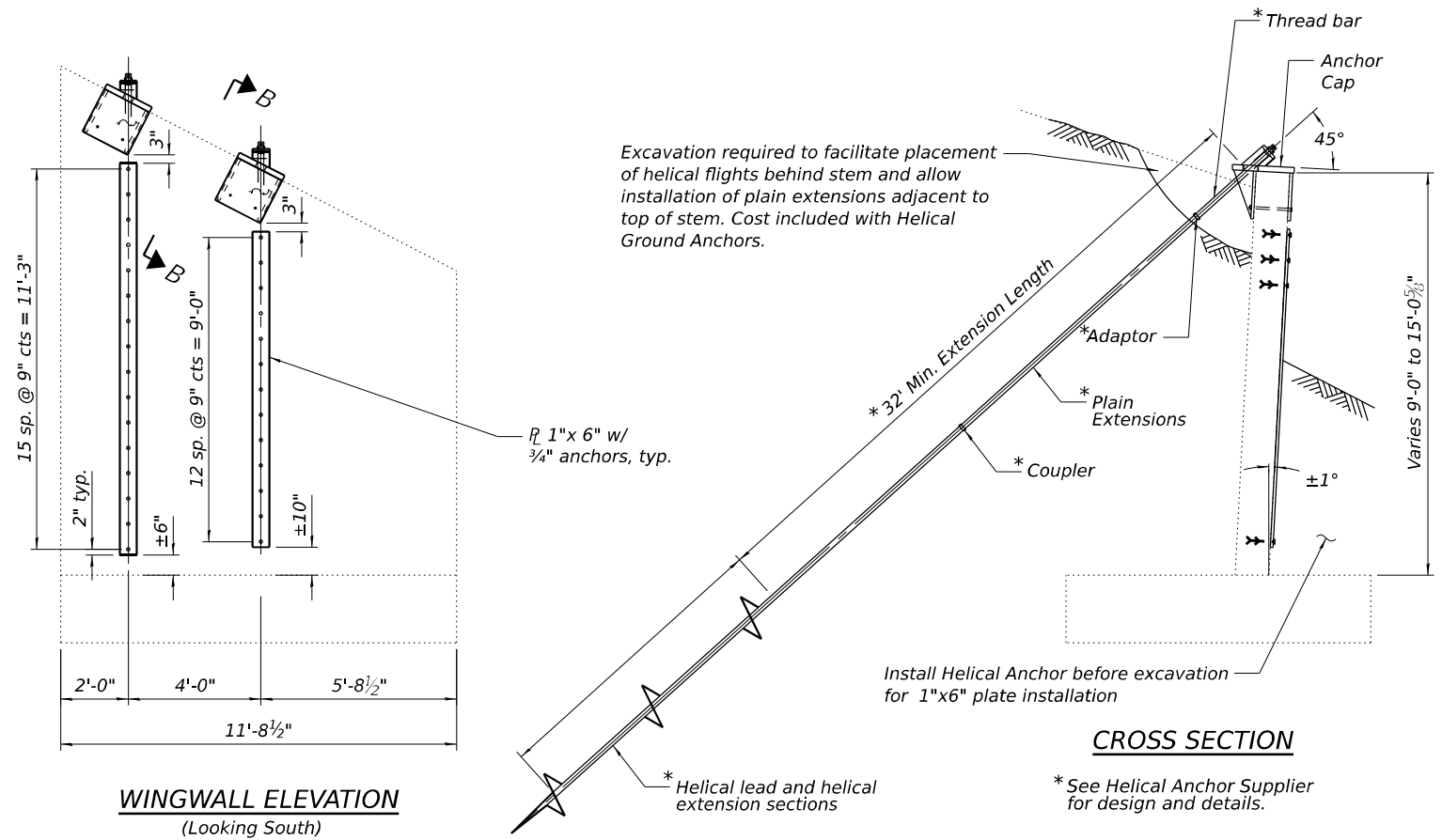
PREFORMED JOINT STRIP SEAL
 STRUCTURE NO. 034-0054

SHEET 4 OF 6 SHEETS

F.A.P. RITE.	SECTION	COUNTY	TOTAL SHEETS	SHEET NO.
510	(119BR) BRR, BJR, I	HANCOCK	12	10
CONTRACT NO. 72881				
ILLINOIS FED. AID PROJECT				



PLAN

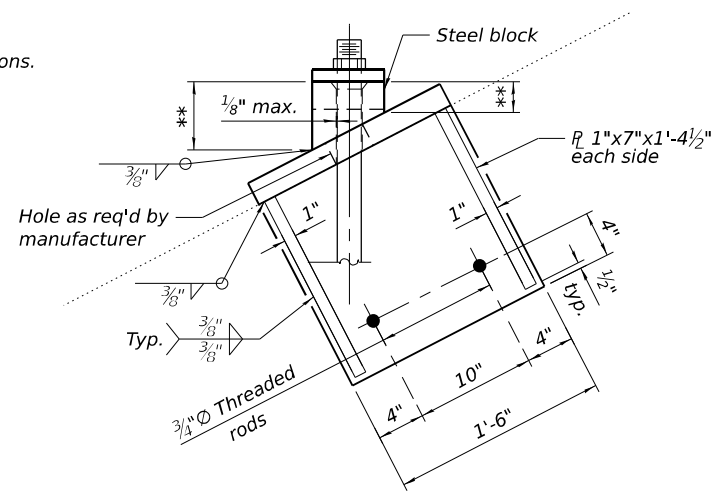


WINGWALL ELEVATION
(Looking South)

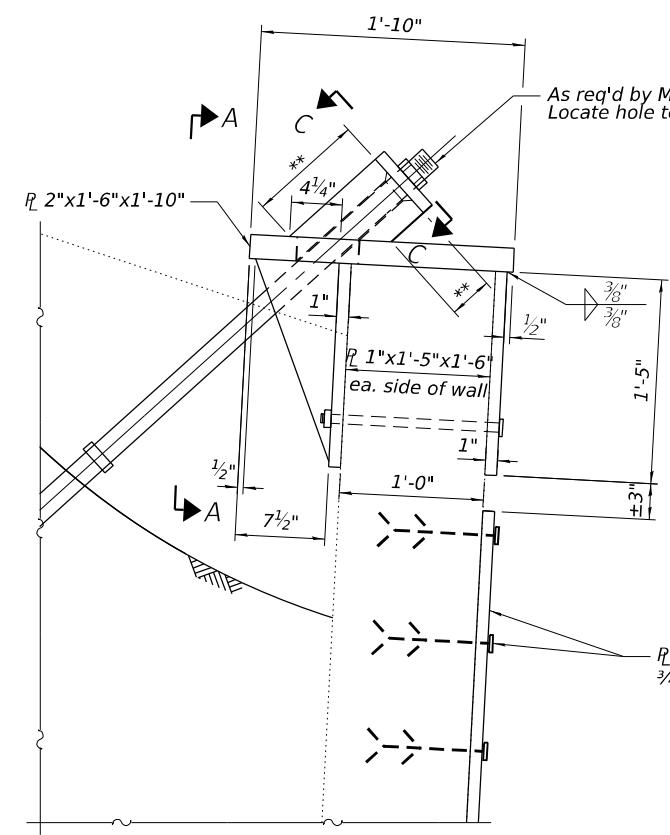
CROSS SECTION

NOTES

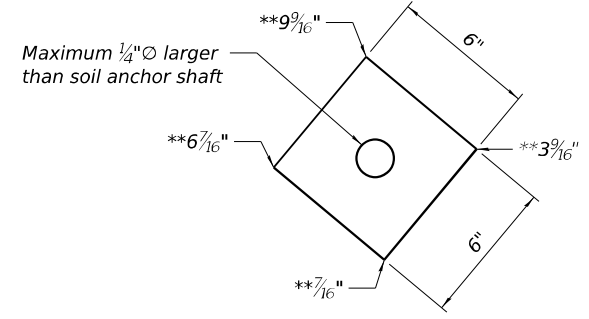
1. Helical Anchors shall be designed by manufacturer. (See Special Provisions).
2. The Contractor shall submit design calculations and shop drawings for the proposed Helical Ground Anchor to the Engineer for review and approval.
3. Helical anchor design load (Service) = 13k/Anchor.
4. Cost of steel plates, washers, nuts, 1"x6" plates and concrete anchors included in the cost of Helical Ground Anchors.
5. All anchor components and steel shall be galvanized according to Article 509.05 of the Standard Specifications.



SECTION A



SECTION B



SECTION C

BILL OF MATERIAL - ONE WINGWALL

ITEM	UNIT	QUANTITY
Helical Ground Anchors	Each	2

MODEL: Default
 FILE NAME: J:\21046.03D IDOT D6 - PTB 199-030 - W03D - Hancock County 72881\CADDData\CADSheets\0340054\72881-005-0FRD-anchor.dgn
 8/31/2022 12:24:44 PM

KUHN & TRELLO
 CONSULTING ENGINEERS
 A Limited Liability Company
 100 N. 7th Street, 3rd Floor
 Springfield, IL 62702
 Phone: 217-616-0244
 Professional Design Firm No. 284-006516

USER NAME =	DESIGNED - SPN	REVISED -
PILOT SCALE =	CHECKED - MJT	REVISED -
PILOT DATE =	DRAWN - MMY	REVISED -
	CHECKED - SPN/MJT	REVISED -

STATE OF ILLINOIS
 DEPARTMENT OF TRANSPORTATION

WINGWALL STABILIZATION DETAILS
 STRUCTURE NO. 034-0054

SHEET 5 OF 6 SHEETS

F.A.P. RTE.	SECTION	COUNTY	TOTAL SHEETS	SHEET NO.
510	(119BR) BRR, BJR, I	HANCOCK	12	11
CONTRACT NO. 72881				
ILLINOIS FED. AID PROJECT				

BRIDGE FOUNDATION BORING LOG

BRIDGE FOUNDATION BORING LOG

BRIDGE FOUNDATION BORING LOG

PROJECT IL Rt. 96 over Date 08-04-76
ROUTE FA-82 Tyson Creek Bored By D. Bruun
SEC 119 BR STA 91+85+ Checked By R.W. Baker

PROJECT IL Rt. 96 over Date 08-04-76
ROUTE FA-82 Tyson Creek Bored By D.E. Bruun
SEC 119 BR STA 91+85+ Checked By R.W. Baker

PROJECT IL Rt. 96 over Date 08-04-76
ROUTE FA-510 (formerly FA-82) Tyson Creek Bored By D.E. Bruun
SEC 119 BR STA 91 + 85+ Checked By R.W. Baker

Table with columns: Elevation, N, Qu t/s.f., w (%), Surface Water El., Groundwater El. at Completion, After Hours. Includes soil descriptions like Red & Gray mottled Silty Clay (Till) and Gray Silty Clay Loam (Till).

Table with columns: Elevation, N, Qu t/s.f., w (%), Surface Water El., Groundwater El. at Completion, After Hours. Includes soil descriptions like Brown Silty Clay (Till) and Reddish-Brown Clay Loam (Till).

Table with columns: Elevation, N, Qu t/s.f., w (%), Surface Water El., Groundwater El. at Completion, After Hours. Includes soil descriptions like Gray Silty Loam Moist (Hard) and Yellow-Brown Silty Clay Loam Moist (Stiff).

N-Standard Penetration Test - Blows per foot to drive 2"
O.D. Split Spoon Sampler 12" with 140# hammer falling 30".
DS - BEFORE SEATING
Qu - Unconfined Compressive Strength - t/sf
w - Water Content - percentage of oven dry weight - %
NR - No Recovery
Type failure:
B - Bulge Failure
S - Shear Failure
E - Estimated Value
P - Penetrometer

N-Standard Penetration Test - Blows per foot to drive 2"
O.D. Split Spoon Sampler 12" with 140# hammer falling 30".
DS - BEFORE SEATING
Qu - Unconfined Compressive Strength - t/sf
w - Water Content - percentage of oven dry weight - %
NR - No Recovery
Type failure:
B - Bulge Failure
S - Shear Failure
E - Estimated Value
P - Penetrometer

N-Standard Penetration Test - Blows per foot to drive 2"
O.D. Split Spoon Sampler 12" with 140# hammer falling 30".
DS - BEFORE SEATING
Qu - Unconfined Compressive Strength - t/sf
w - Water Content - percentage of oven dry weight - %
NR - No Recovery
Type failure:
B - Bulge Failure
S - Shear Failure
E - Estimated Value
P - Penetrometer



USER NAME =
DESIGNED - SPN
CHECKED - MJT
DRAWN - MMY
CHECKED - SPN/MJT

DESIGNED - SPN
CHECKED - MJT
DRAWN - MMY
CHECKED - SPN/MJT

REVISED -
REVISED -
REVISED -
REVISED -

STATE OF ILLINOIS
DEPARTMENT OF TRANSPORTATION

SOIL BORING LOGS
STRUCTURE NO. 034-0054

SHEET 6 OF 6 SHEETS

Table with columns: F.A.P. R/E., SECTION, COUNTY, TOTAL SHEETS, SHEET NO., CONTRACT NO. 72881, ILLINOIS FED. AID PROJECT

MODEL: Default
FILE NAME: J:\21046.03D\DOT D6 - PTB 199-030 - WO3D - Hancock County 72881\CADDData\CADSheets\0340054\72881-006-OFD-Borings.dgn