

STATE OF ILLINOIS
DEPARTMENT OF TRANSPORTATION

F.A.* RTE.	SECTION	COUNTY	TOTAL SHEETS	SHEET NO
*	(101,102,103,104)PP	MADISON	7	1
		ILLINOIS	CONTRACT NO. 76R71	

* FAP 2/FAU 9105

D98-114-22



PROPOSED HIGHWAY PLANS

FAP 2 / FAU 9105 (IL 3)
SECTION (101,102,103,104)PP
STATE PROJECT
PARTIAL AND FULL DEPTH PATCHING
MADISON COUNTY

C-98-146-22

FOR INDEX OF SHEETS, SEE SHEET NO.
TRAFFIC DATA

IL 3 (BEGINNING OF PROJECT MCKINLEY BRIDGE TO ROCK RD.)

LOCATION	IL 3
2023 ADT	11900 (ACTUAL)
2043 ADT	13100 (ESTIMATED)
MU%	11.4
SU%	8.5

IL 3 (ROCK RD. TO PONTOON RD.)

LOCATION	IL 3
2023 ADT	13500 (ACTUAL)
2043 ADT	14900 (ESTIMATED)
MU%	12.3
SU%	4.7

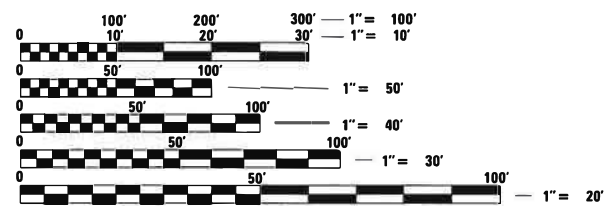
IL 3 (PONTOON RD. TO I-270)

LOCATION	IL 3
2023 ADT	15700 (ACTUAL)
2043 ADT	17300 (ESTIMATED)
MU%	10.3
SU%	6.1

IL 3 (I-270 TO NEW POAG RD.)

LOCATION	IL 3
2023 ADT	12700 (ACTUAL)
2043 ADT	14000 (ESTIMATED)
MU%	9.5
SU%	4.2

FUNCTIONAL CLASSIFICATION: OTHER PRINCIPAL ARTERIAL

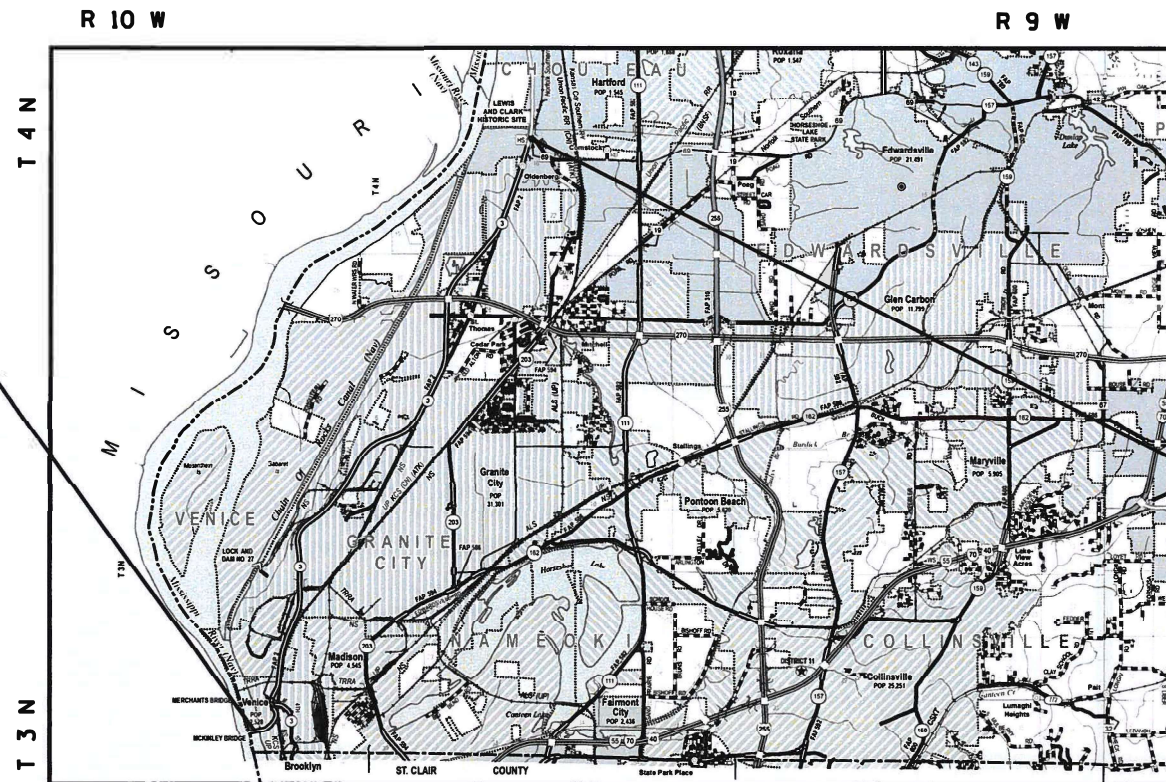


FULL SIZE PLANS HAVE BEEN PREPARED USING STANDARD ENGINEERING SCALES. REDUCED SIZED PLANS WILL NOT CONFORM TO STANDARD SCALES. IN MAKING MEASUREMENTS ON REDUCED PLANS, THE ABOVE SCALES MAY BE USED.

J.U.L.I.E.
JOINT UTILITY LOCATION INFORMATION FOR EXCAVATORS
1-800-892-0123
OR 811

PROJECT ENGINEER: BILLIE OWEN

CONTRACT NO. 76R71



BEGIN PROJECT
(MCKINLEY BRIDGE)
MILE STA. 0.00
LAT: 38.666408°
LONG: -90.176959°

END PROJECT
(NEW POAG RD.)
MILE STA. 11.25
LAT: 38.805030°
LONG: -90.099001°



1" = 1 MILE

GROSS LENGTH = 59,400 FT. = 11.25 MILE

NET LENGTH = 58,637 FT. = 11.10 MILE

STATE OF ILLINOIS
DEPARTMENT OF TRANSPORTATION

SUBMITTED October 21, 2022
Mark Brown
REGIONAL ENGINEER

December 9, 2022
[Signature]
ENGINEER OF DESIGN AND ENVIRONMENT

December 9, 2022
[Signature]
DIRECTOR OF HIGHWAYS PROJECT IMPLEMENTATION

PRINTED BY THE AUTHORITY
OF THE STATE OF ILLINOIS

INDEX OF SHEETS

- 1 COVER SHEET
- 2 INDEX OF SHEETS, HIGHWAY STANDARDS, GENERAL NOTES, MIXTURE REQUIREMENTS & COMMITMENTS
- 3 SUMMARY OF QUANTITIES
- 4 TYPICAL SECTIONS
- 5-6 SCHEDULE OF QUANTITIES
- 7 LOCATION MAP

HIGHWAY STANDARDS

- 000001-08 STANDARD SYMBOLS, ABBREVIATIONS AND PATTERNS
- 001001-02 AREAS OF REINFORCEMENT BARS
- 001006 DECIMAL OF AN INCH AND OF A FOOT
- 442101-09 CLASS B PATCHES
- 701101-05 OFF-ROAD OPERATIONS, MULTILANE, 15' (4.5 M) TO 24" (600 MM) FROM PAVEMENT EDGE
- 701106-02 OFF-ROAD OPERATIONS, MULTILANE, MORE THAN 15' (4.5 M) AWAY
- 701421-08 LANE CLOSURE, MULTILANE, OPERATIONS ONLY, FOR SPEEDS ≥ 45 MPH TO 55 MPH
- 701422-10 LANE CLOSURE, MULTILANE, FOR SPEEDS ≥ 45 MPH TO 55 MPH
- 701426-09 LANE CLOSURE, MULTILANE, INTERMITTENT OR MOVING OPERATION, FOR SPEEDS ≥ 45 MPH

- 701701-10 URBAN LANE CLOSURE, MULTILANE INTERSECTION
- 701901-08 TRAFFIC CONTROL DEVICES
- 780001-05 TYPICAL PAVEMENT MARKINGS
- 781001-04 TYPICAL APPLICATIONS RAISED REFLECTIVE PAVEMENT MARKERS
- 420001-10 PAVEMENT JOINTS
- 420701-03 PAVEMENT WELDED WIRE REINFORCEMENT

GENERAL NOTES

1. UTILITIES KNOWN TO HAVE FACILITIES WITHIN THE PROJECT AREA ARE AS FOLLOWS:

	AERIAL	BURIED
AMEREN ILLINOIS (GAS & ELECTRIC)	X	X
AT&T ILLINOIS (COMMUNICATIONS)	X	X
BLUEBIRD NETWORK (COMMUNICATIONS)	X	X
BUCKEYE PARTNERS L.P. WOOD RIVER PIPELINE (PIPELINE)		X
CHARTER COMMUNICATIONS, INC. (CABLE)	X	X
CLEARWAVE COMMUNICATIONS (COMMUNICATIONS)	X	X
CONSOLIDATED COMMUNICATIONS (COMMUNICATIONS)	X	X
CITY OF E. ST. LOUIS (SANITARY SEWER)		X
CITY OF E. ST. LOUIS (LIGHTING)	X	X
EVERSTREAM GLC HOLDING COMPANY LLC (COMMUNICATIONS)	X	X
EXPLORER PIPELINE COMPANY (PIPELINE)	X	X
CITY OF GRANITE CITY (SANITARY SEWER)		X
ILLINOIS AMERICAN WATER COMPANY (WATER, SANITARY SEWER)	X	X
ILLINOIS AMERICAN WATER COMPANY (WATER)		X
LEVEL 3 COMMUNICATIONS, LLC (COMMUNICATIOS)		X
CITY OF MADISON (SANITARY SEWER)	X	X
MADISON COUNTY (SANITARY SEWER)		X
VERIZON BUSINESS (COMMUNICATIO)		X
METRO EAST SANITARY DISTRICT (SANITARY SEWER)	X	X
MISSOURI INTERSTATE GAS (PIPELINE)		X
MITCHELL PUBLIC WATER DISTRICT (WATER)		X
SHO-ME TECHNOLOGIES (COMMUNICATIONS)	X	X
SPIRE NGL (PIPELINE)		X
SPRINT (COMMUNICATIONS)		X
ST. LOUIS PIPELINE OPERATING LLC (PIPELINE)	X	X
TRICORP MANAGEMENT (UNKNOWN)	X	X
WINDSTREAM KDL, INC. (COMMUNICATIONS)	X	X
ZAYO GROUP LLC (COMMUNICATIONS)	X	X

- 2. NO SURVEY WAS PERFORMED FOR THIS PROJECT AND THE PLANS WERE CREATED USING MICROFILM.
- 3. THE PROPOSED PAVEMENT MARKING SHALL MATCH THE LOCATIONS OF THE EXISTING PAVEMENT MARKING, AS DIRECTED BY THE ENGINEER.

GENERAL NOTES

FOUR CHANGEABLE MESSAGE SIGNS SHALL BE REQUIRED FOR THIS PROJECT. THEY SHALL BE PLACED 2 WEEKS PRIOR TO ANY LANE CLOSURES. THE CHANGEABLE MESSAGE SIGNS SHALL BE PLACED ON I-270, MCKINLEY BRIDGE, AND SN 060-0315 FOR THE DURATION OF THE CONTRACT AT THE DIRECTION OF THE ENGINEER.

ALL BRIDGES WITHIN THE PROJECT LIMITS SHALL BE OMITTED FROM PATCHING.

THE DEPARTMENT STRONGLY ENCOURAGES THE PRIME CONTRACTOR AND THEIR APPROVED SUB-CONTRACTORS TO HIRE MINORITY, WOMEN AND DISADVANTAGED INDIVIDUALS FROM ITS FEDERALLY FUNDED HIGHWAY CONSTRUCTION CAREERS TRAINING PROGRAM (HCCTP) TO HELP MEET WORKFORCE AND TRAINEE GOALS. THIS PROGRAM IS TRAINING MINORITIES, WOMEN AND DISADVANTAGED INDIVIDUALS IN HIGHWAY CONSTRUCTION-RELATED SKILLS, E.G., MATH FOR THE TRADES, JOB READINESS, TECHNICAL SKILLS COURSEWORK (CARPENTRY, CONCRETE FLATWORK, BLUEPRINT READING, SITE PLANS, SITE WORK, TOOLS USE, ETC.) AND OSHA 10 HOUR CERTIFICATION, TO PREPARE THEM FOR A CAREER IN THE HIGHWAY CONSTRUCTION TRADES. GRADUATES ARE WELL-TRAINED AND READY TO BECOME PRODUCTIVE ENTRY-LEVEL CONSTRUCTION WORKERS. CONTACT THE DISTRICT 8 EEO OFFICE AT 618-346-3360 AND/OR THE HCCTP COORDINATOR AT 618-874-6528 TO LEARN MORE ABOUT THE PROGRAM AND FOR ASSISTANCE IN MEETING WORKFORCE AND TRAINEE GOALS.

MIXTURE REQUIREMENTS

ROUTE	FAP2/FAU 9105 (IL 3)
SECTION	(101,102,103,104)-PP
COUNTY	MADISON
CONTRACT	76R71

DESCRIPTION	PARTIAL DEPTH PATCHING OF IL 3 FROM MCKINLEY BRIDGE TO NEW POAG RD.
-------------	---

MIXTURE USE	BINDER	SURFACE
AC/PG	PG 64-22	PG 64-22
RAP % (MAX)	SEE SPECIAL PROVISION	SEE SPECIAL PROVISION
DESIGN AIR VOIDS	4.0 % @ Ndes=90	4.0 % @ Ndes=90
MIX COMPOSITION (Gradation)	IL 19.0	IL 9.5
FRICTION AGG	MIXTURE "B"	MIXTURE "E"
QUALITY MGMT PROGRAM	QC/QA	QC/QA
MatTranDev Required?	NO	NO

COMMITMENTS

NONE

REV. - MS

* FAP 2/FAU 9105

MODEL: D:\default
 FILE: M:\misc\pml\lucad\ch\benley.com\pml\DOT\Documents\DOT_Offices\District_8\Projects\067671\ICAD\Drawings\Sheet\067671-sh-h-cover.dgn

USER NAME = Rahshun.Miller DESIGNED - DRAWN - PLOT SCALE = 100.0000' / in. PLOT DATE = 10/20/2022	DESIGNED -	REVISED -	STATE OF ILLINOIS DEPARTMENT OF TRANSPORTATION	INDEX OF SHEETS, HIGHWAY STANDARDS, GENERAL NOTES, MIXTURE REQUIREMENTS, COMMITMENTS	F.A.* RTE.	SECTION	COUNTY	TOTAL SHEETS	SHEET NO.
	DRAWN -	REVISED -			*	(101,102,103,104)PP	MADISON	7	2
	CHECKED -	REVISED -			CONTRACT NO. 76R71				
	DATE -	REVISED -			SCALE: NTS	SHEET 1 OF 1 SHEETS	STA. TO STA.	ILLINOIS FED. AID PROJECT	

CODE NO.	ITEM	UNIT	TOTAL QUANTITY	CONSTRUCTION CODE	
				100% STATE IL 3 ROADWAY 0006 URBAN	
44200050	WELDED WIRE REINFORCEMENT	SQ YD	976	976	
44201007	CLASS B PATCHES, TYPE II, 13 INCH	SQ YD	249	249	
44201011	CLASS B PATCHES, TYPE III, 13 INCH	SQ YD	51	51	
44201013	CLASS B PATCHES, TYPE IV, 13 INCH	SQ YD	925	925	
44201299	DOWEL BARS 1 1/2"	EACH	792	792	
44213200	SAW CUTS	FOOT	3597	3597	
44213204	TIE BARS 3/4"	EACH	285	285	
67100100	MOBILIZATION	L SUM	1	1	
70100310	TRAFFIC CONTROL AND PROTECTION, STANDARD 701421	L SUM	1	1	
70100320	TRAFFIC CONTROL AND PROTECTION, STANDARD 701422	L SUM	1	1	
70102635	TRAFFIC CONTROL AND PROTECTION, STANDARD 701701	L SUM	1	1	
70107025	CHANGEABLE MESSAGE SIGN	CAL DA	204	204	
70300100	SHORT TERM PAVEMENT MARKING	FOOT	770	770	
70300150	SHORT TERM PAVEMENT MARKING REMOVAL	SQ FT	257	257	
* 78001100	PAINT PAVEMENT MARKING - LETTERS AND SYMBOLS	SQ FT	109	109	

* SPECIALTY ITEM

CODE NO.	ITEM	UNIT	TOTAL QUANTITY	CONSTRUCTION CODE	
				100% STATE IL 3 ROADWAY 0006 URBAN	
* 78001110	PAINT PAVEMENT MARKING - LINE 4"	FOOT	2597	2597	
* 78001140	PAINT PAVEMENT MARKING - LINE 8"	FOOT	54	54	
* 78001180	PAINT PAVEMENT MARKING - LINE 24"	FOOT	72	72	
* 78100100	RAISED REFLECTIVE PAVEMENT MARKER	EACH	37	37	
78300200	RAISED REFLECTIVE PAVEMENT MARKER REMOVAL	EACH	37	37	
X4406440	PARTIAL DEPTH REMOVAL, TYPE III, 4"	SQ YD	80	80	
X4406640	PARTIAL DEPTH REMOVAL, TYPE IV, 4"	SQ YD	352	352	
X4421000	PARTIAL DEPTH PATCHING	TON	97	97	

REV. - MS

* FAP 2/FAU 9105

MODEL: D:\default... FILE: M:\miller\p1111001\Documents\DOT_Offices\District_8\Projects\08768771\CD\Drawings\CD\Sheet08768771.sht-cover.dgn

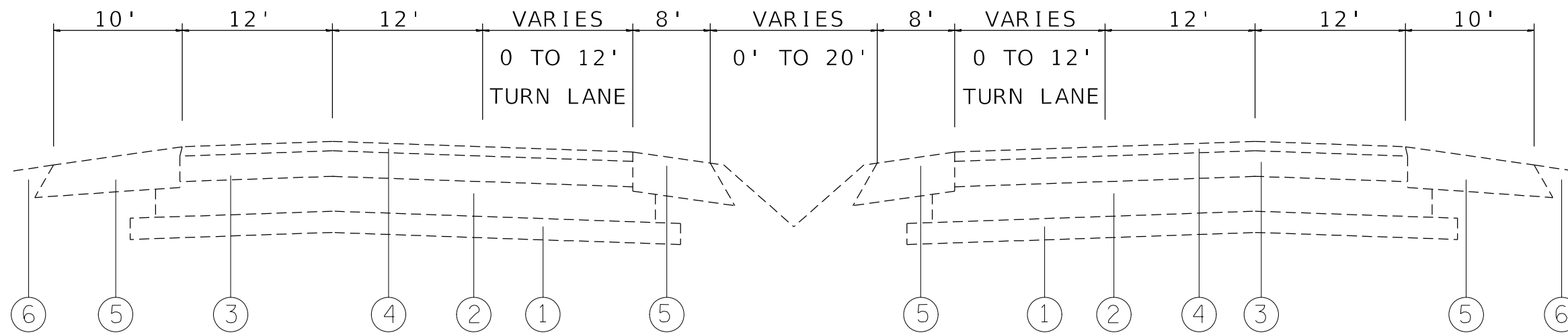
USER NAME = Rahshun.Miller	DESIGNED -	REVISED -
PLOT SCALE = 100.0000' / in.	DRAWN -	REVISED -
PLOT DATE = 10/20/2022	CHECKED -	REVISED -
	DATE -	REVISED -

**STATE OF ILLINOIS
DEPARTMENT OF TRANSPORTATION**

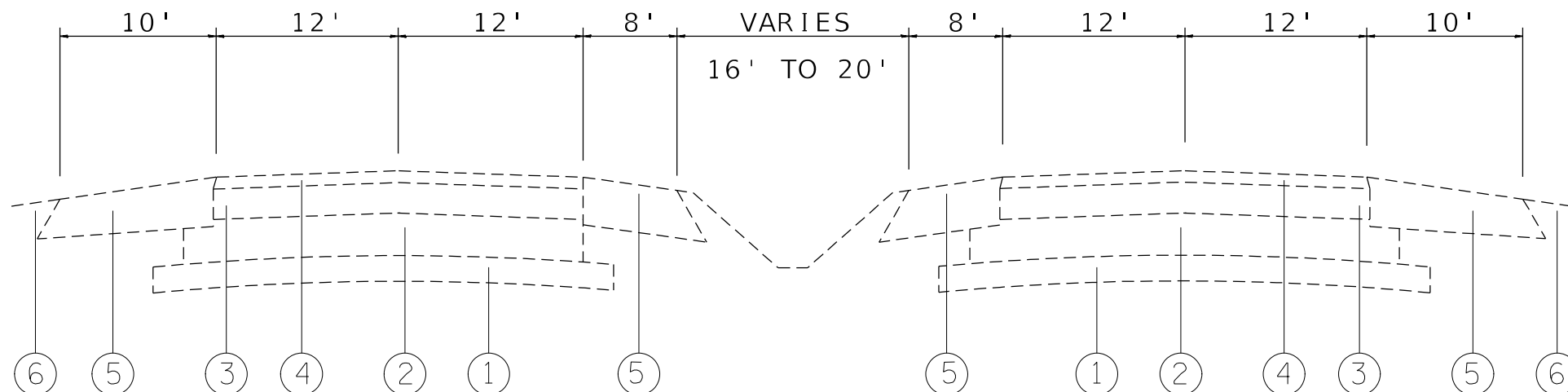
SUMMARY OF QUANTITIES

SCALE: NTS SHEET 1 OF 1 SHEETS STA. TO STA.

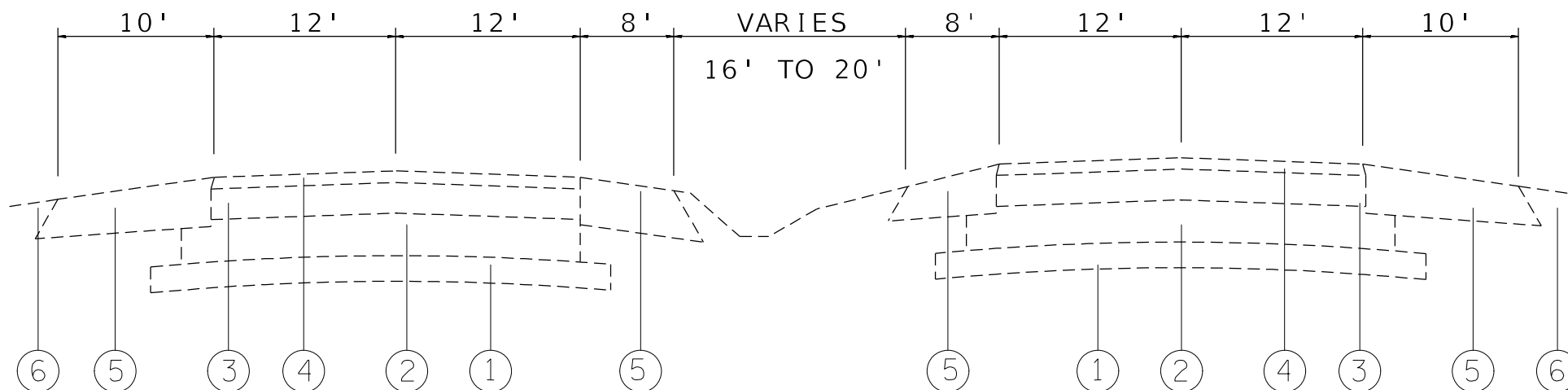
F.A.* RTE.	SECTION	COUNTY	TOTAL SHEETS	SHEET NO.
*	(101,102,103,104)PP	MADISON	7	3
			CONTRACT NO. 76R71	
ILLINOIS FED. AID PROJECT				



TYPICAL SECTION
M.S. 0.00 TO M.S. 6.40



TYPICAL SECTION
M.S. 6.40 TO M.S. 7.70



TYPICAL SECTION
M.S. 7.70 TO M.S. 11.25

LEGEND

- ① EXISTING STABILIZED SUB-BASE GRANDULAR MATERIAL 4"
- ② EXISTING PCC PAVEMENT 9"
- ③ EXISTING LEVELING BINDER (MM) 2 1/2"
- ④ EXISTING HMA SURFACE COURSE 1 1/2"
- ⑤ EXISTING HMA SHOULDERS 8"
- ⑥ EXISTING AGGREGATE SHOULDERS

* FAP 2/FAU 9105

MODEL: Default
 FILE: M:\GIS_Plan\Subsect-cw-bead-fay.com\PIV\DOT\Documents\DOT_Offices\Dir\dr: 8\Project\087687\CAD\Sheet\087687_Lght-cover.dgn

USER NAME = Rahshun,Miller	DESIGNED -	REVISED -
	DRAWN -	REVISED -
PLOT SCALE = 100,0000' / in.	CHECKED -	REVISED -
PLOT DATE = 10/20/2022	DATE -	REVISED -

**STATE OF ILLINOIS
DEPARTMENT OF TRANSPORTATION**

SCALE: NTS		SHEET 1 OF 2 SHEETS		STA.	TO STA.
		TYPICAL SECTION			

F.A.* RTE.	SECTION	COUNTY	TOTAL SHEETS	SHEET NO.
*	(101,102,103,104)PP	MADISON	7	4
CONTRACT NO. 76R71			ILLINOIS FED. AID PROJECT	

CLASS B PATCHES SOUTHBOUND

MILE	LANE	LENGTH	WIDTH	TYPE II	TYPE III	TYPE IV	SAW CUTS	DOWEL BARS	TIE BARS	WELDED WIRE REINFORCEMENT
		(FOOT)	(FOOT)	(SQ YD)	(SQ YD)	(SQ YD)	(FOOT)	(EACH)	(EACH)	(SQ YD)
10.82	PASSING	6	12	3.0			48.0	20.0		
10.70	DRIVING	6	12	3.0			48.0	20.0		
10.70	PASSING	6	12	3.0			48.0	20.0		
10.66	DRIVING	10	12	13.3			56.0	20.0		
10.55	DRIVING	90	6			60.0	198.0	10.0	30.0	60.0
10.35	DRIVING	10	12	13.3			56.0	20.0		
10.17	PASSING	6	12	8.0			48.0	20.0		
9.95	DRIVING	10	12	13.3			56.0	20.0		
9.87	DRIVING	10	12	13.3			56.0	20.0		
9.45	DRIVING	70	6			46.7	158.0	10.0	23.3	46.7
9.00	DRIVING	8	6	5.3			34.0	10.0		
8.25	DRIVING	15	12		20.0		66.0	20.0		20.0
8.22	PASSING	8	12	10.7			52.0	20.0		
8.20	DRIVING	73	12			97.3	182.0	20.0	24.3	97.3
8.17	DRIVING	110	6			73.3	238.0	10.0	36.7	73.3
8.16	DRIVING	50	12			66.7	136.0	20.0	16.7	66.7
8.14	DRIVING	30	12			40.0	96.0	20.0	10.0	40.0
7.62	DRIVING	8	12	10.7			52.0	20.0		
7.62	PASSING	8	12	10.7			52.0	20.0		
6.80	DRIVING	50	12			66.7	136.0	20.0	16.7	66.7
SUB-TOTAL =				122.7	20.0	450.7	1816.0	360.0	157.7	470.7
ANTICIPATED FAILURES 20%				24.5	4.0	90.1	363.2	72.0	31.5	94.1
TOTAL :				147	24	541	2179	432	189	565

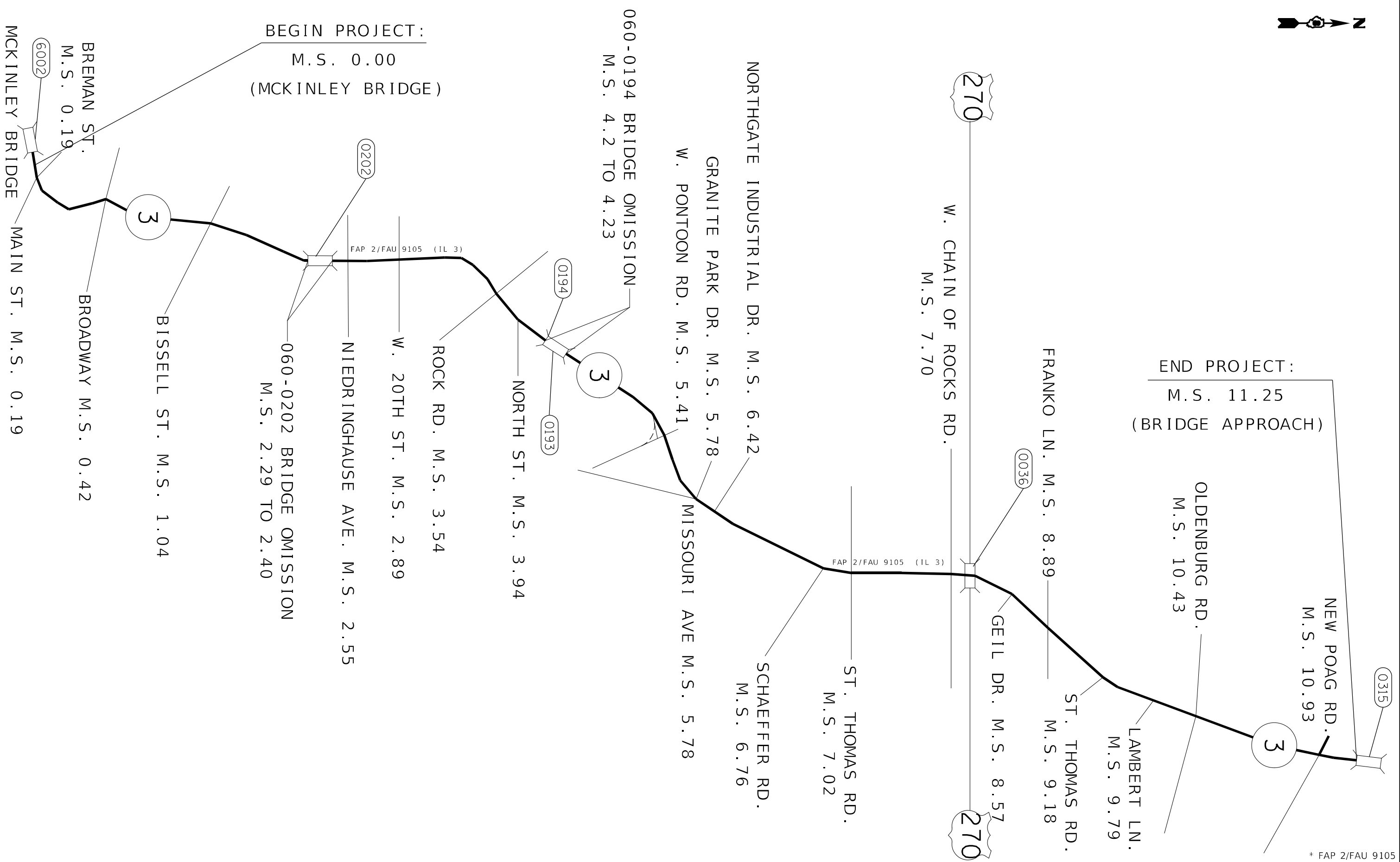
CLASS B PATCHES NORTHBOUND

MILE	LANE	LENGTH	WIDTH	TYPE II	TYPE III	TYPE IV	SAW CUTS	DOWEL BARS	TIE BARS	WELDED WIRE REINFORCEMENT
		(FOOT)	(FOOT)	(SQ YD)	(SQ YD)	(SQ YD)	(FOOT)	(EACH)	(EACH)	(SQ YD)
2.55	DRIVING	30	12			40.00	96	20	10	40.00
2.55	DRIVING	17	12		22.67		70	20		22.67
2.56	DRIVING	6	12	8.00			48	20		
3.85	PASSING	6	12	8.00			48	20		
4.15	DRIVING	6	12	8.00			48	20		
4.15	PASSING	6	12	8.00			48	20		
5.07	DRIVING	6	12	8.00			48	20		
5.07	PASSING	6	12	8.00			48	20		
5.21	PASSING	60	12			80.00	156	20	20	80.00
5.21	DRIVING	60	12			80.00	156	20	20	80.00
5.25	DRIVING	6	12	8.00			48	20		
5.25	DRIVING	90	12			120.00	216	20	30	120.00
5.35	PASSING	6	12	8.00			48	20		
10.85	DRIVING	8	12	10.67			52	20		
11.25	PASSING	8	12	10.67			52	20		
SUB-TOTAL				85.33	22.67	320.00	1182.00	300.00	80.00	342.67
ANTICIPATED FAILURES 20%				17.07	4.53	64.00	236.40	60.00	16.00	68.53
TOTAL :				102	27	384	1418	360	96	411

MODEL: Default
 FILE: \\mlls-pc01\public\aw-beadley.com\PI\INDOT\Documents\DOT_Offices\Director_E\Projects\087687\CAD\Sheets\087687_south-cover.dgn

* FAP 2/FAU 9105

USER NAME = Rahshun,Miller PLOT SCALE = 100,0000' / in. PLOT DATE = 10/20/2022	DESIGNED - DRAWN - CHECKED - DATE -	REVISED - REVISED - REVISED - REVISED -	STATE OF ILLINOIS DEPARTMENT OF TRANSPORTATION	SCHEDULE OF QUANTITIES	F.A. RTE. * SECTION (101,102,103,104)PP COUNTY MADISON TOTAL SHEETS 7 SHEET NO. 5 CONTRACT NO. 76R71 ILLINOIS FED. AID PROJECT
SCALE: NTS SHEET 1 OF 2 SHEETS STA. TO STA.					



END PROJECT:
M.S. 11.25
(BRIDGE APPROACH)

BEGIN PROJECT:
M.S. 0.00
(MCKINLEY BRIDGE)

* FAP 2/FAU 9105

F.A. + RTE.	SECTION	COUNTY	TOTAL SHEETS	SHEET NO.
*	(101,102,103,104)PP	MADISON	7	7
CONTRACT NO. 76R71				
ILLINOIS FED. AID PROJECT				

LOCATION MAP			
SCALE: NTS	SHEET 1	OF 1 SHEETS	STA. TO STA.

**STATE OF ILLINOIS
DEPARTMENT OF TRANSPORTATION**

USER NAME = Rahshun,Miller	DESIGNED -	REVISED -
PLOT SCALE = 100,0000' / in.	DRAWN -	REVISED -
PLOT DATE = 10/20/2022	CHECKED -	REVISED -
	DATE -	REVISED -

MODEL: Default
FILE: M:\MS_E_Plan\Subsect-cw-bead-fay.com\PIV\DOT\Documents\1\DOT_Offices\Dir\dr. 8\Project\087682\CAD\sheet\087682_7-sh-cov-2.dgn