

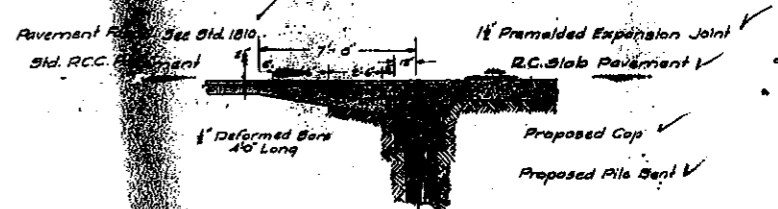
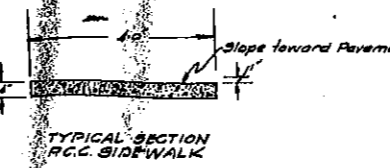
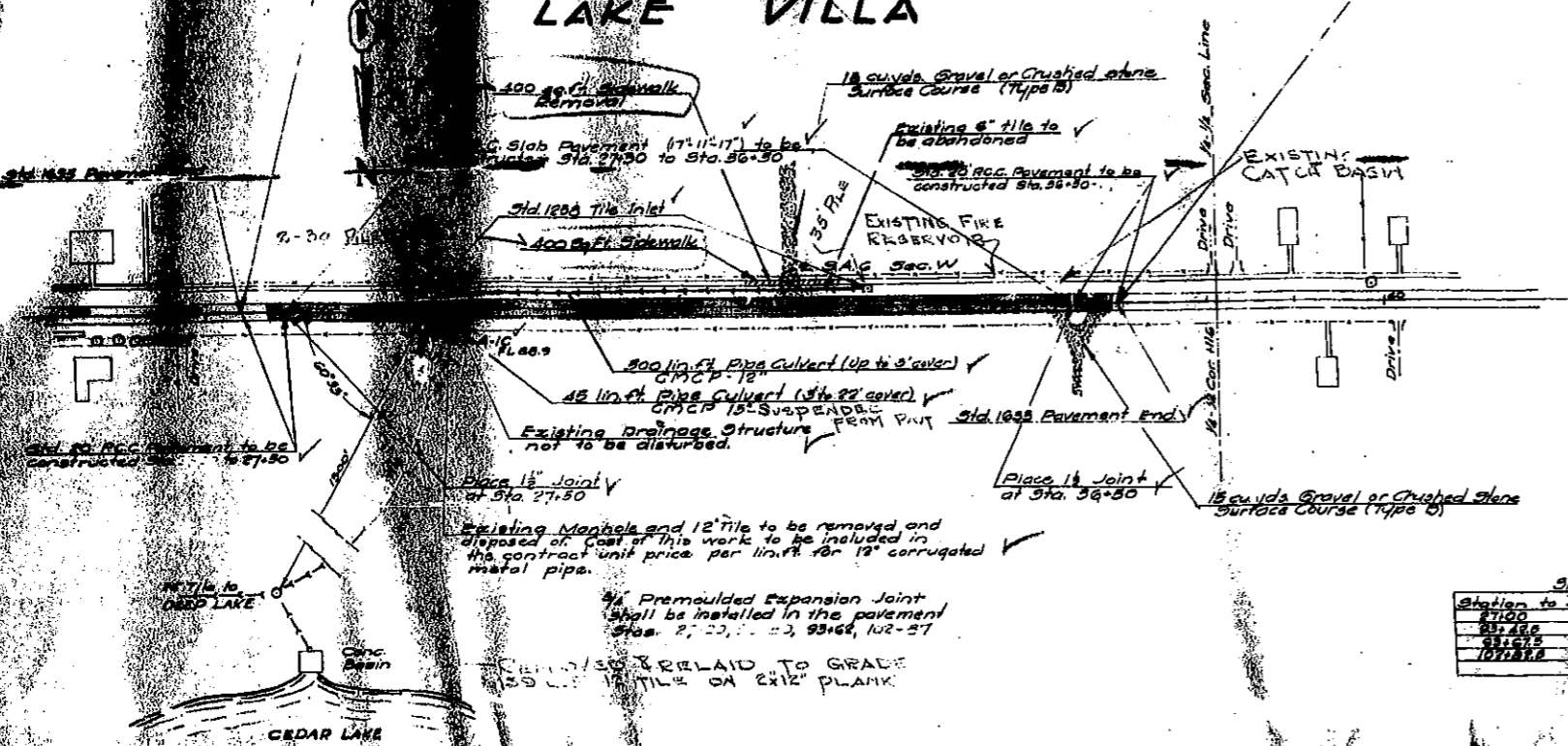
T.6, SEC. 12, COUNTY
SING STA. 100

LAKE VILLA

Note: 30' x 18' - 20' R.C.C. Pavement
to be constructed as
noted on plans.

OMISSION IN THIS CONTRACT
STA. 100 TO STA. 105

DATE	SECTION	COUNTY	DATE	NO.
3.16.19	W.A.	LAKE	19	7
STA. 100	TO STA. 105			
FOR ROAD DIST. DIST. ENGINEER FOR THE PROJECT				



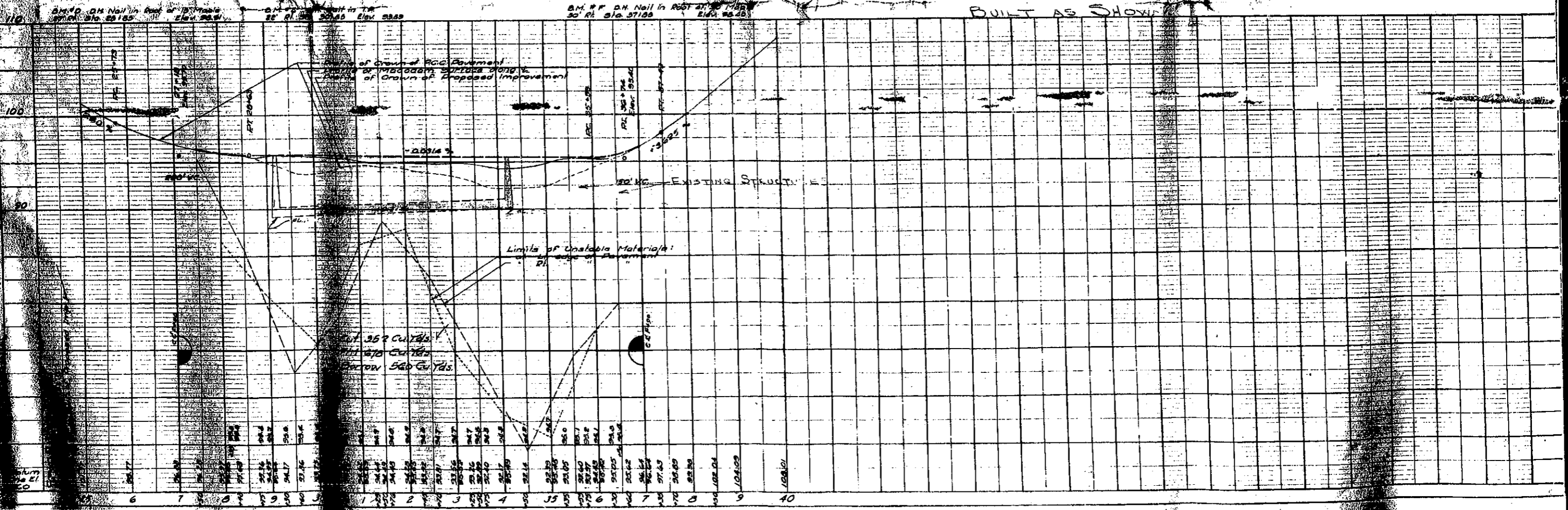
SHOULDER SCHEDULE

Station to Station	Length	Width	Sq. Yds.
27+00 to 27+50	50	20	1000
27+50 to 28+00	50	20	1000
28+00 to 28+50	50	20	1000
28+50 to 29+00	50	20	1000
29+00 to 29+50	50	20	1000
29+50 to 30+00	50	20	1000
TOTAL			6000

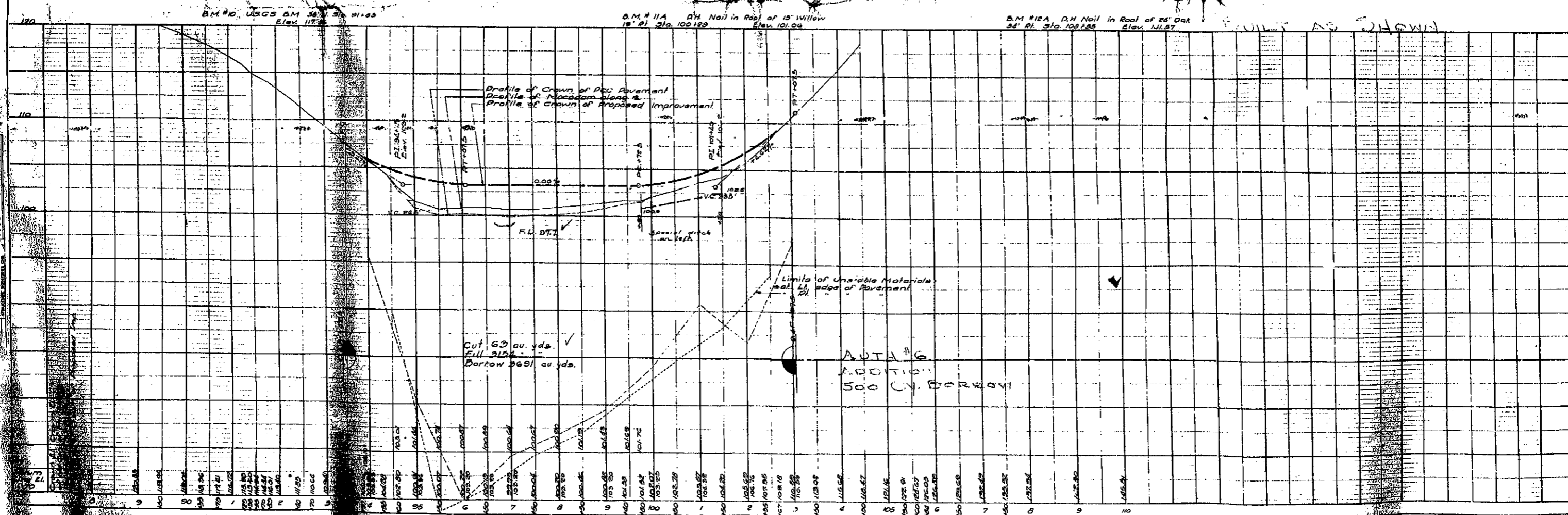
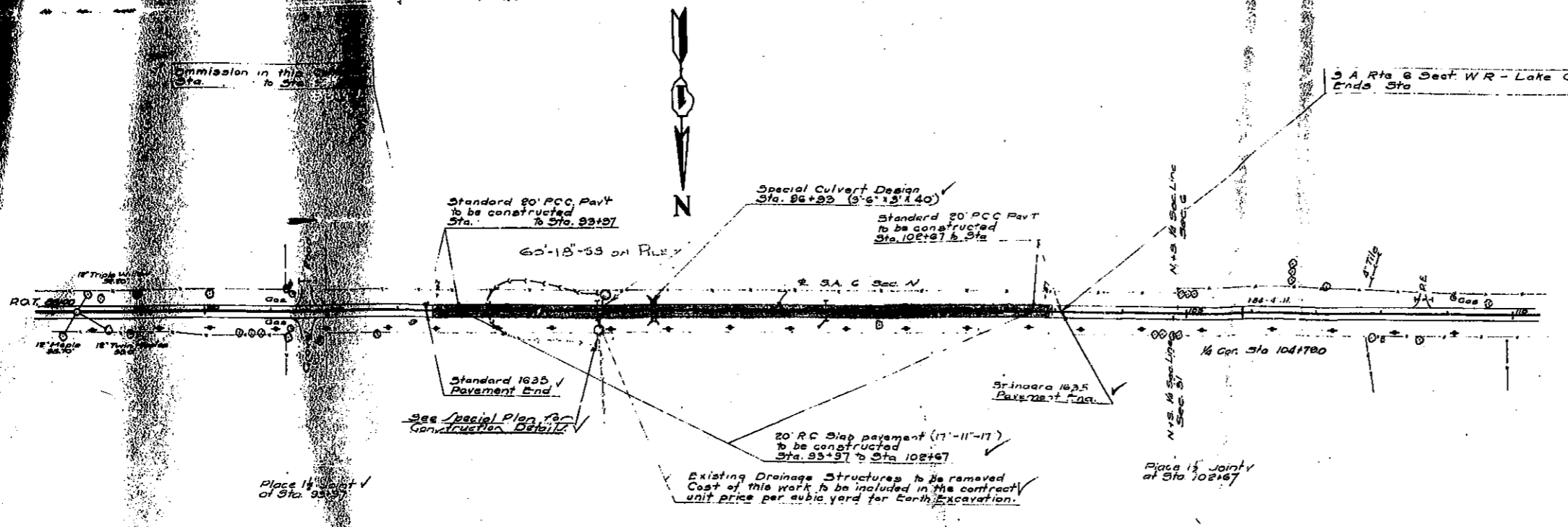
PAVEMENT REMOVAL

Station to Station	Length	Width	Sq. Yds.
27+00 to 27+50	50	20	1000
27+50 to 28+00	50	20	1000
28+00 to 28+50	50	20	1000
28+50 to 29+00	50	20	1000
29+00 to 29+50	50	20	1000
29+50 to 30+00	50	20	1000
TOTAL			6000

AUTH. #5
ADDITION
264 SQ. YARD REM.



SECTION	S.A.C. W-R	COUNTY	Lake	DATE	19	NO.	8
STA	93+42.5	TO STA	103+07.5				
ROAD DIST. DIST. ALIGNED FOR AID PROJECT							



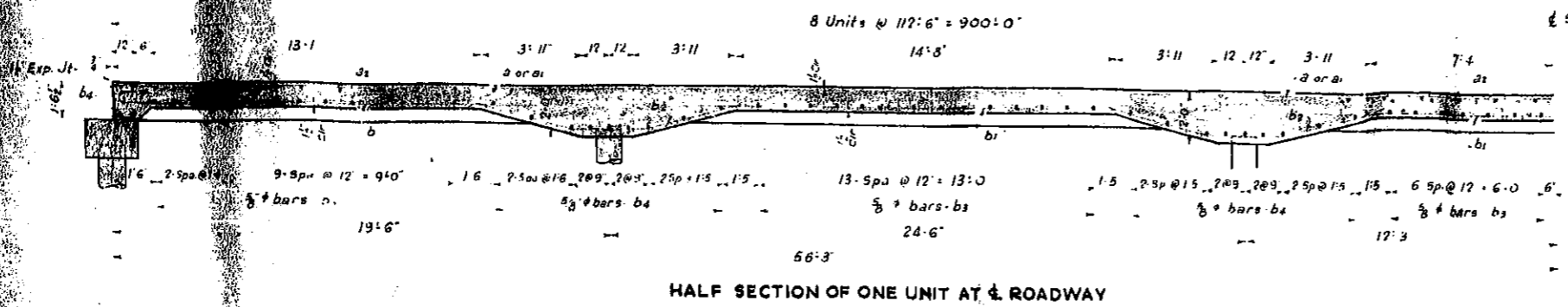
DATE	
BY	
CHECKED	
APPROVED	
SCALE	

DATE	
BY	
CHECKED	
APPROVED	
SCALE	

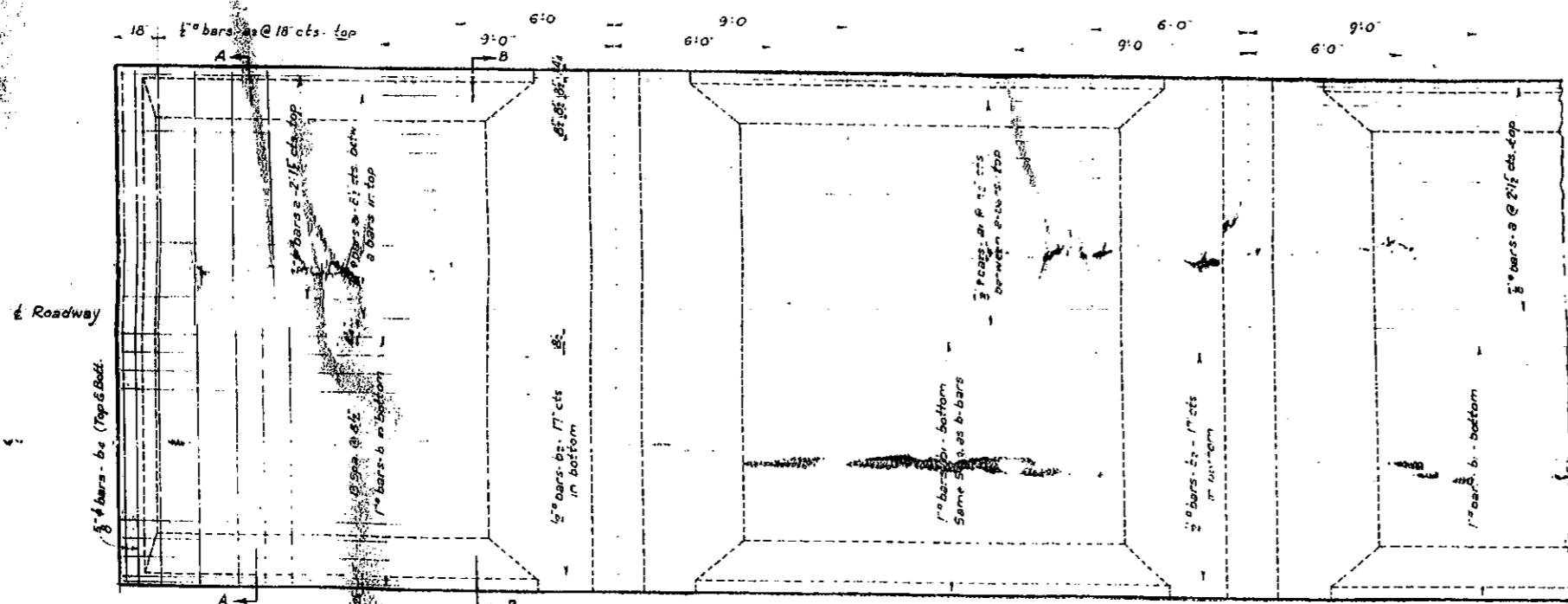
STATE OF ILLINOIS
DEPARTMENT OF PUBLIC WORKS & BUILDINGS
DIVISION OF HIGHWAYS

PROJECT NO. SA.6 W-A
SHEET NO. 19 14
SHEETS 4 SHEETS

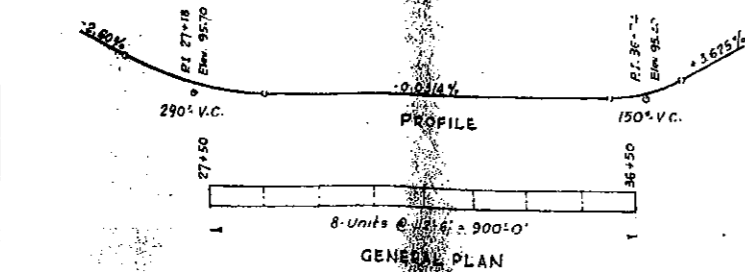
PILE 27' RT. STA. 25+85 EL. 98.91
STA. 30+85 EL. 98.89
PILE 30' RT. STA. 27+85 EL. 98.40



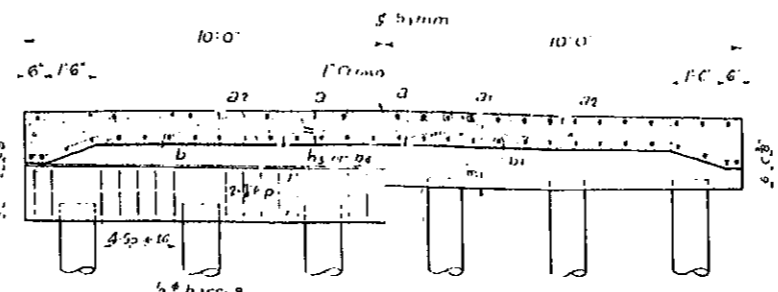
HALF SECTION OF ONE UNIT AT ROADWAY



HALF PLAN - ONE UNIT

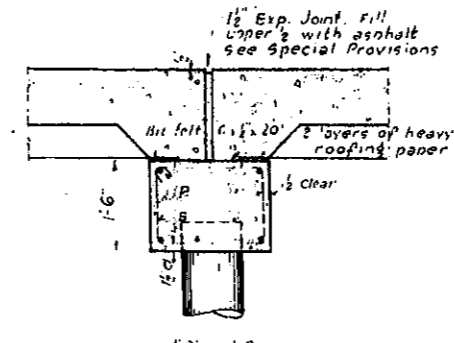


GENERAL PLAN



HALF SECTION - AA

HALF SECTION - BB



SECTION AT EXP. JOINT

STA. & BENT	CR. ELEV.	TOP OF CAP ELEV.	PILE CUT OFF ELEV.	EST. LOTH PILES - FT.
27 + 50	96.26	94.72	95.72	20
27 + 60.5	96.07		96.32	20
27 + 96	95.89		96.14	20
28 + 18.5	95.73		94.01	20
28 + 43	95.68		95.93	21
28 + 62.5	95.60	94.12	95.12	
28 + 82	95.63		95.90	
29 + 06.5	95.64		93.89	30
29 + 31	95.63		93.88	30
29 + 55.5	95.63		93.88	30
29 + 75	95.62	94.08	93.08	30
29 + 94.5	95.61		93.86	32
30 + 19.0	95.61		93.85	30
30 + 43.5	95.60		93.85	26
30 + 68	95.59		93.84	21
30 + 87.5	95.58	94.04	93.04	22
31 + 07	95.58		93.83	
31 + 31.5	95.57		93.82	
31 + 56	95.56		93.81	
31 + 80.5	95.56		93.81	
32 + 00	95.55	94.01	93.01	
32 + 19.5	95.54		92.79	22
32 + 44	95.53		92.78	
32 + 68.5	95.52		92.78	24
32 + 93	95.52		92.77	26
33 + 12.5	95.51	93.97	92.97	32
33 + 37	95.51		92.76	
33 + 66.5	95.50		92.75	
33 + 91	95.49		92.74	24
34 + 05.5	95.48		92.73	16
34 + 25	95.48	93.94	92.94	12
34 + 44.5	95.47		92.72	
34 + 69	95.46		92.71	10
34 + 93.5	95.46		92.71	18
35 + 18	95.45		92.70	16
35 + 47.5	95.44	93.90	92.90	12
35 + 67	95.44		92.69	
35 + 87.5	95.43		92.68	20
36 + 06	95.42		92.68	26
36 + 20.5	95.42		92.79	24
36 + 50	95.41	94.18	93.18	20

BAR DETAILS

BILL OF MATERIAL

BAR	NO.	SIZE	LENGTH
a	320	1/2"	30-0
a1	576	3/4"	15-0
a2	592	1/2"	10-6
b	480	1"	18-0
b1	720	1"	20-0
b2	448	1/2"	13-0
b3	528	3/4"	19-9
b4	352	"	19-6
p	36	1/2"	19-6
s	261	1/2"	6-6

Class X Concrete Cu. Yds. 819.0
Reinforcement Bars Lbs. 150,990
Treated Piles Lin. Ft.

For total bill of material see sheet 4 of 4

SA. ROUTE 6 - SECTION W-R
LAKE COUNTY

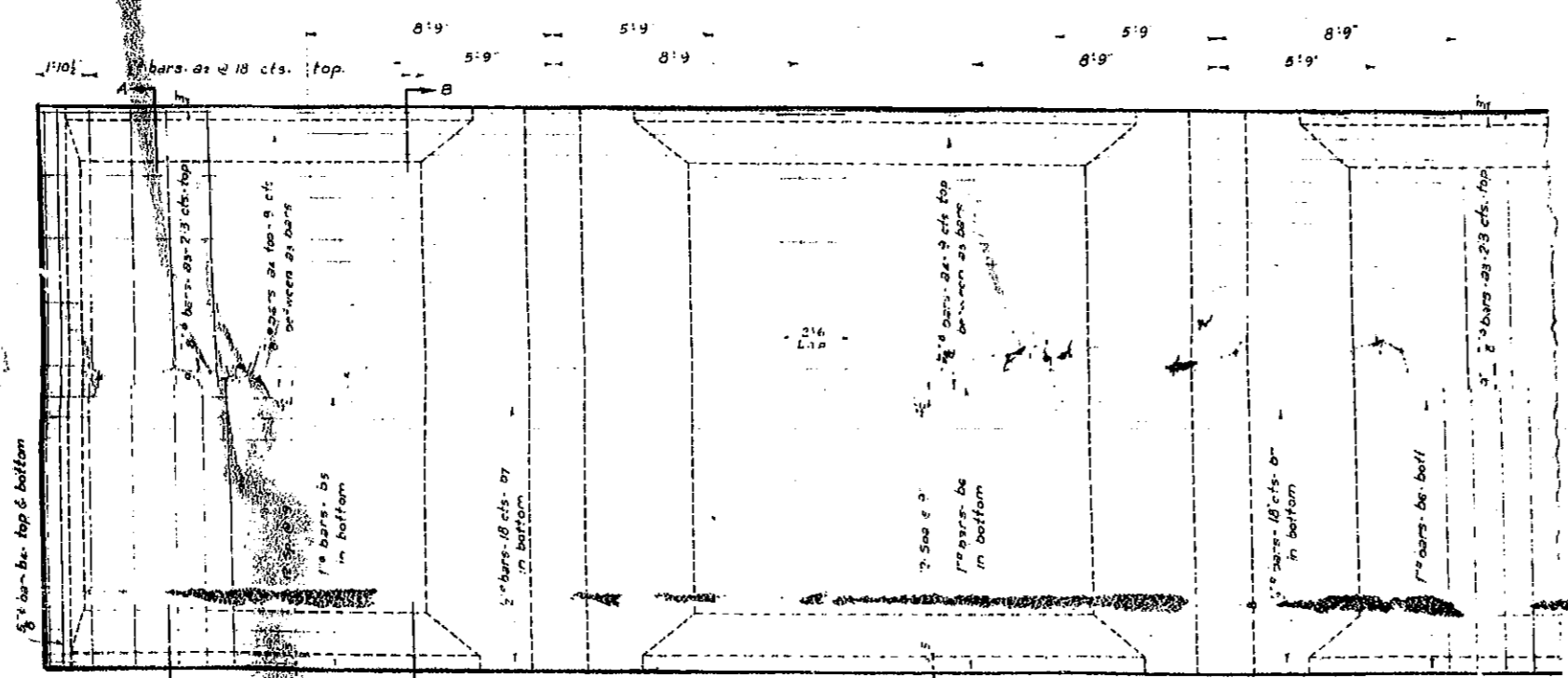
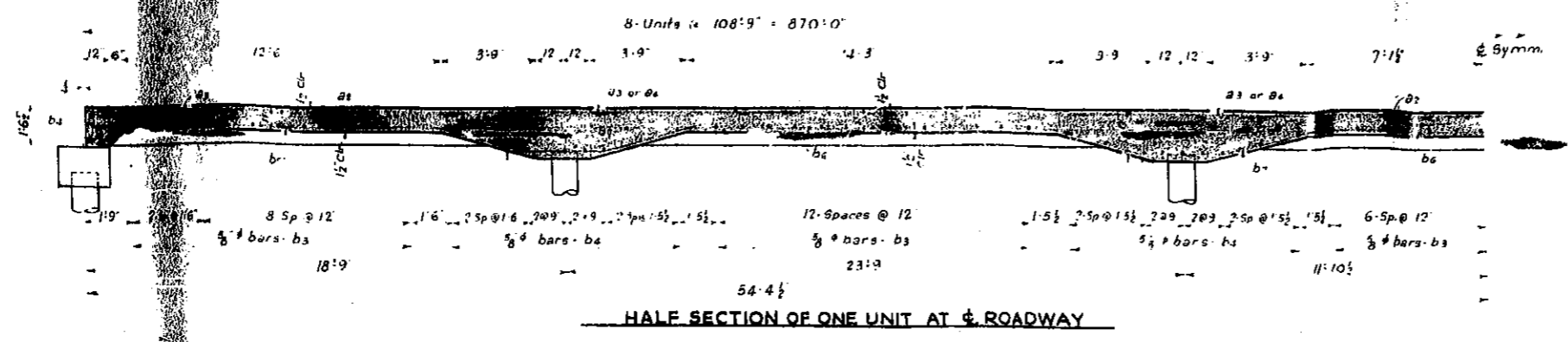
COMPUTED: M. C. Quinn
CHECKED: E. J. Spalding
DRAWN: M. C. Quinn
CHECKED: C. W. Quinn
SPECIAL: ASSEMBLED
CHECKED

See Sheet #3 for General Notes

10 - U.S.G.S. B.M. 83 - ELEV. 117.36
 1 1/4" O.H. NAIL IN BRICK WALL
 19 FT. RT. STA. 100.00

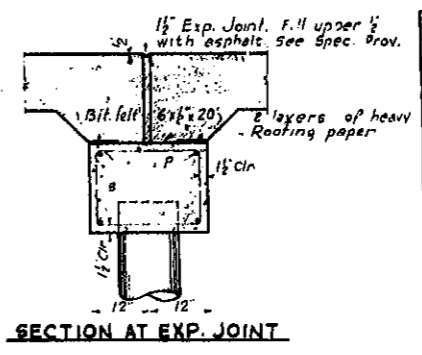
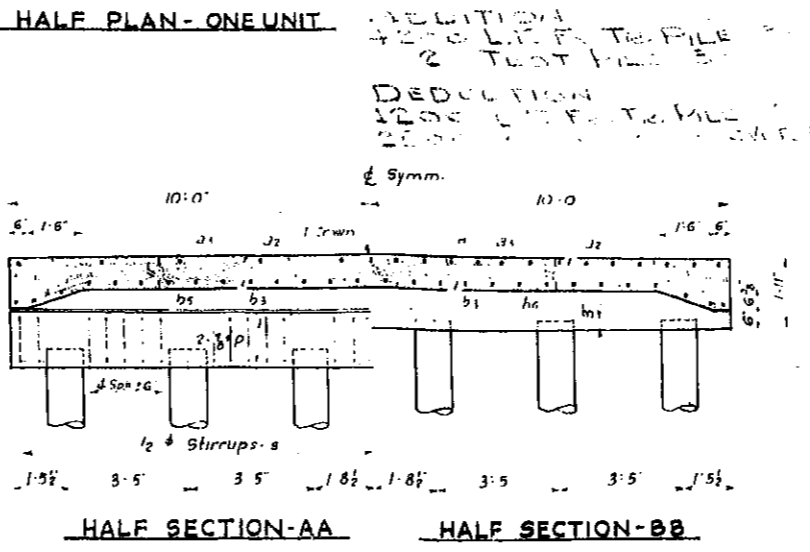
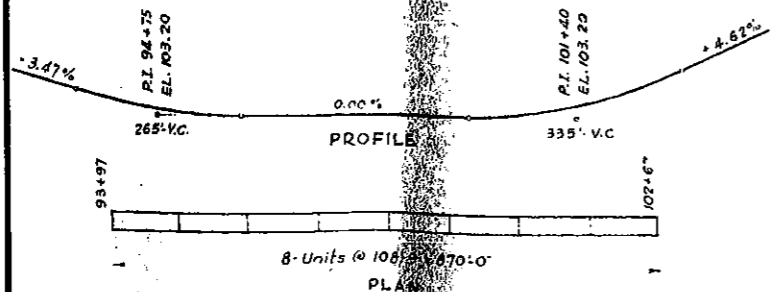
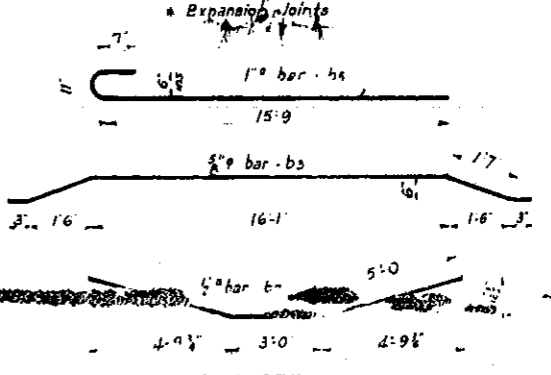
STATE OF ILLINOIS
 DEPARTMENT OF PUBLIC WORKS & BUILDINGS
 DIVISION OF HIGHWAYS

ROUTE 6 W.R. LAKE 19 15
 SHEET NO. 2
 4 SHEETS



PILE BENT DATA

Sta. of Bent	Cr. Elev.	Top of Cap Elev.	Pile Cut-off Elev.	Pile Length
93+87.00	106.88	106.88	103.88	23.0
94+15.75	108.88	108.88	105.88	23.0
94+39.50	109.88	109.88	106.88	23.0
94+63.25	109.88	109.88	107.88	22.0
94+87.00	109.88	109.88	108.40	21.48
95+08.75	109.88	109.88	109.94	20.94
95+24.50	109.88	109.88	109.90	20.98
95+48.25	109.88	109.88	109.60	21.28
95+72.00	109.88	109.88	109.55	21.33
95+95.75	109.88	109.88	109.46	21.42
96+14.50	109.88	109.88	109.66	21.22
96+33.25	109.88	109.88	109.48	21.40
96+57.00	109.88	109.88	109.48	21.40
96+80.75	109.88	109.88	109.48	21.40
97+04.50	109.88	109.88	109.48	21.40
97+28.25	109.88	109.88	109.66	21.22
97+42.00	109.88	109.88	109.48	21.40
97+65.75	109.88	109.88	109.48	21.40
97+89.50	109.88	109.88	109.48	21.40
98+13.25	109.88	109.88	109.48	21.40
98+37.00	109.88	109.88	109.66	21.22
98+60.75	109.88	109.88	109.48	21.40
98+84.50	109.88	109.88	109.48	21.40
99+8.25	109.88	109.88	109.48	21.40
99+32.00	109.88	109.88	109.66	21.22
99+55.75	109.88	109.88	109.48	21.40
99+79.50	109.88	109.88	109.48	21.40
100+3.25	109.88	109.88	109.48	21.40
100+27.00	109.88	109.88	109.66	21.22
100+50.75	109.88	109.88	109.48	21.40
100+74.50	109.88	109.88	109.48	21.40
101+18.25	109.88	109.88	109.66	21.22
101+42.00	109.88	109.88	109.48	21.40
101+65.75	109.88	109.88	109.48	21.40
101+89.50	109.88	109.88	109.48	21.40
102+13.25	109.88	109.88	109.66	21.22
102+37.00	109.88	109.88	109.48	21.40
102+60.75	109.88	109.88	109.48	21.40
102+84.50	109.88	109.88	109.66	21.22
103+8.25	109.88	109.88	109.48	21.40



BILL OF MATERIAL

BAR	NO.	SIZE	LENGTH
a1	568	1/2"	19'-6"
a2	320	3/8"	29'-0"
a4	544	1/2"	14'-6"
b3	488	5/8"	19'-9"
b4	352	3/8"	19'-6"
b5	448	1/2"	17'-3"
bc	672	1/2"	19'-3"
b7	448	1/2"	13'-0"
P	36	3/8"	19'-6"
S	261	1/2"	6'-6"

Class X Concrete Cu.Yds 793.1
 Reinforcement Bars Lbs 139,490
 Treated Piles Lin.ft

COMPUTED
 CHECKED
 DRAWN
 CHECKED
 SPECIAL ASSEMBLED
 CHECKED

EXAMINED
 PASSED
 APPROVED

See Sheet #3 for General Notes

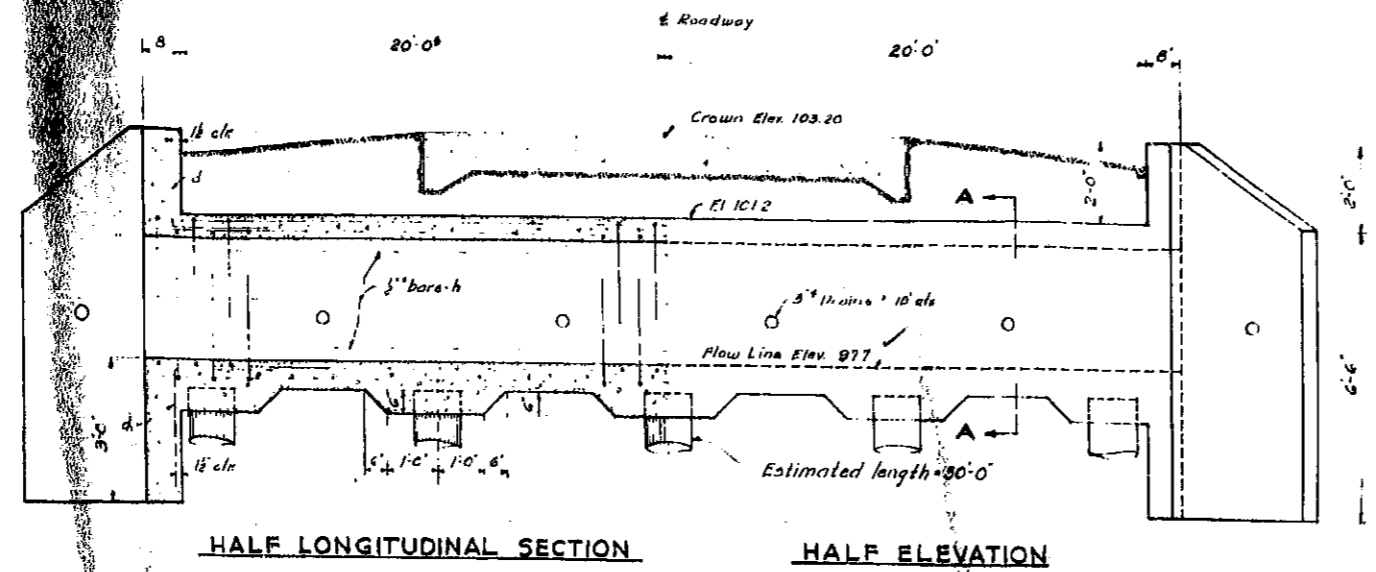
for total bill of material see sheet 4 of 4

S.A. ROUTE-6 SECT. W.R.
 LAKE COUNTY

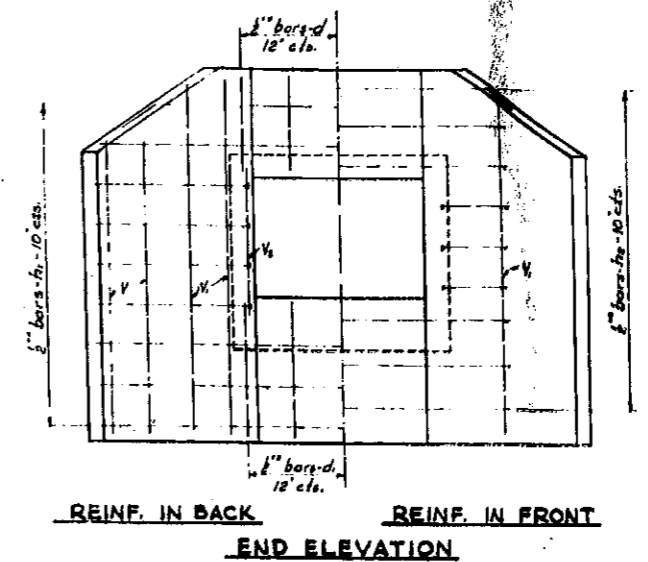
B.M. #11A DN of 15' Willow
Elev. 101.06

STATE OF ILLINOIS
DEPARTMENT OF PUBLIC WORKS & BUILDINGS
DIVISION OF HIGHWAYS

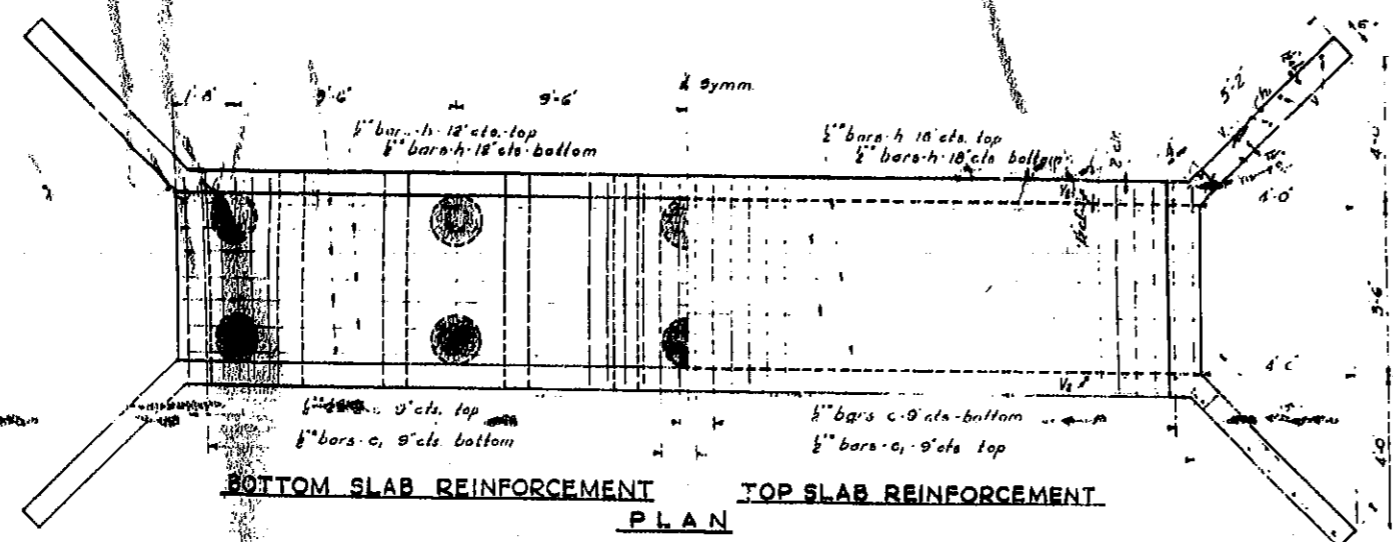
PROJECT NO. SAG W-R
DATE 19 16
SHEET NO. 3
4 SHEETS



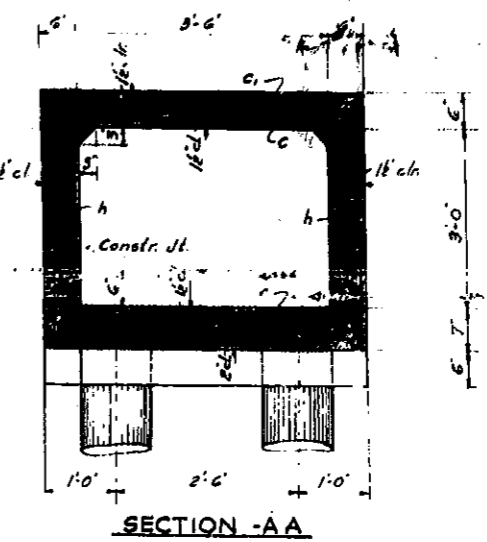
HALF LONGITUDINAL SECTION HALF ELEVATION



REINF. IN BACK REINF. IN FRONT
END ELEVATION

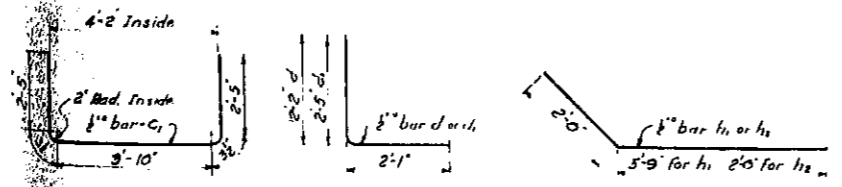


BOTTOM SLAB REINFORCEMENT TOP SLAB REINFORCEMENT
PLAN



SECTION -AA

Wing Walls and barrel shall be poured monolithically.



BAR DETAILS

FOR PILING DETAIL
SEE FINAL ESTIMATE.

BILL OF MATERIAL

BAR	NO.	SIZE	LENGTH
C	109	1/2"	4'-3"
C ₁	109	1/2"	9'-3"
d	10	1/2"	4'-3"
d ₁	10	1/2"	4'-6"
h	36	1/2"	21'-3"
h ₁	40	1/2"	7'-9"
h ₂	40	1/2"	4'-0"
V	8	1/2"	6'-6"
V ₁	12	1/2"	8'-0"
V ₂	4	1/2"	3'-6"

Class X Concrete Cu. Yds. 17.0
Reinforcement Bars Lbs. 2510.
Treated Piles Lin. Ft.

GENERAL NOTES

Class X Concrete shall be used thruout.
Expansion joints shall be filled with pre-moulded joint filler.
See Special Provisions.
For preparation of subgrade, see Special Provisions.
Contractor shall pour each barrel between construction joints in one continuous operation.
Finish top of pile cap smooth with steel trowel and cover with 2 layers of roll roofing paper before pouring slab.
All piles shall be creosoted. Piles in pavement bents shall be driven to a minimum capacity 15 Tons. Piles in culvert shall be driven to a minimum capacity of 10 Tons.
See preceding sheets for Boring Data. Boring Data are shown only as a guide to bidders in estimating soil conditions which may be encountered in the work.
Contractor shall drive test piles as directed by the Engineer before ordering remainder of piling.

COMPUTED E.S. 2/10
STANDARD CHECKED H.O. Owen
DRAWN C. L. Hill
CHECKED H.C.
SPECIAL ASSEMBLED
CHECKED

EXAMINED
PASSED
APPROVED