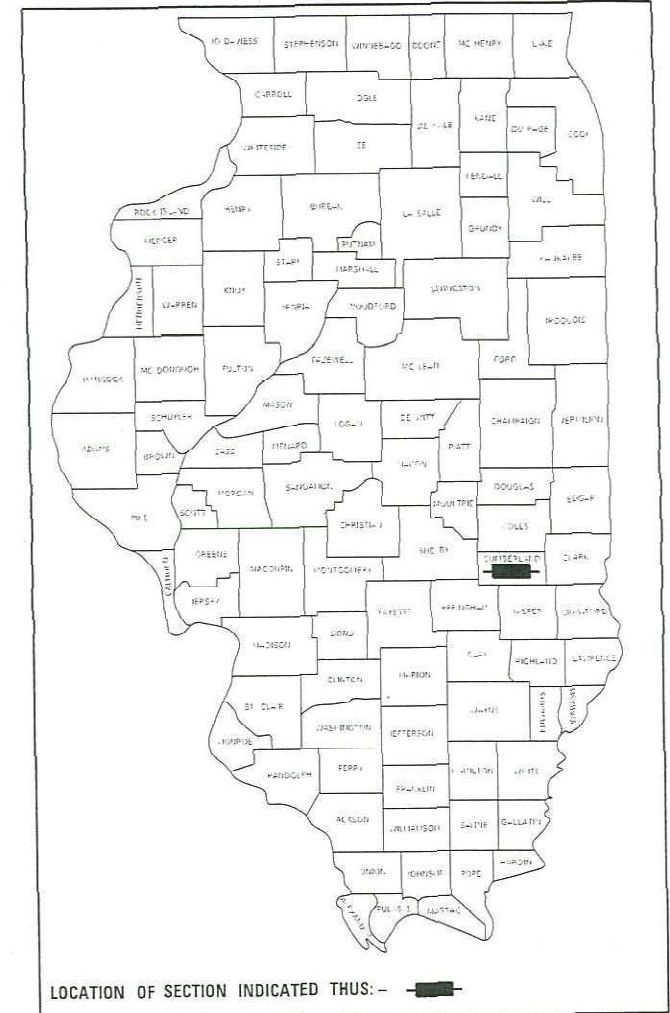


STATE OF ILLINOIS  
DEPARTMENT OF TRANSPORTATION

F.A. RTE	SECTION	COUNTY	TOTAL SHEETS	SHEET NO.
1	D7 TREE REMOVAL 2023-3	CUMBERLAND	38	1
FAI 70 & FAS 1707		ILLINOIS	CONTRACT NO. 74983	

D-97-012-23



FOR INDEX OF SHEETS, SEE SHEET NO. 2

STATION EQUATION

FAI ROUTE 70

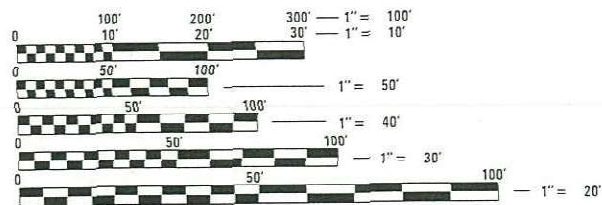
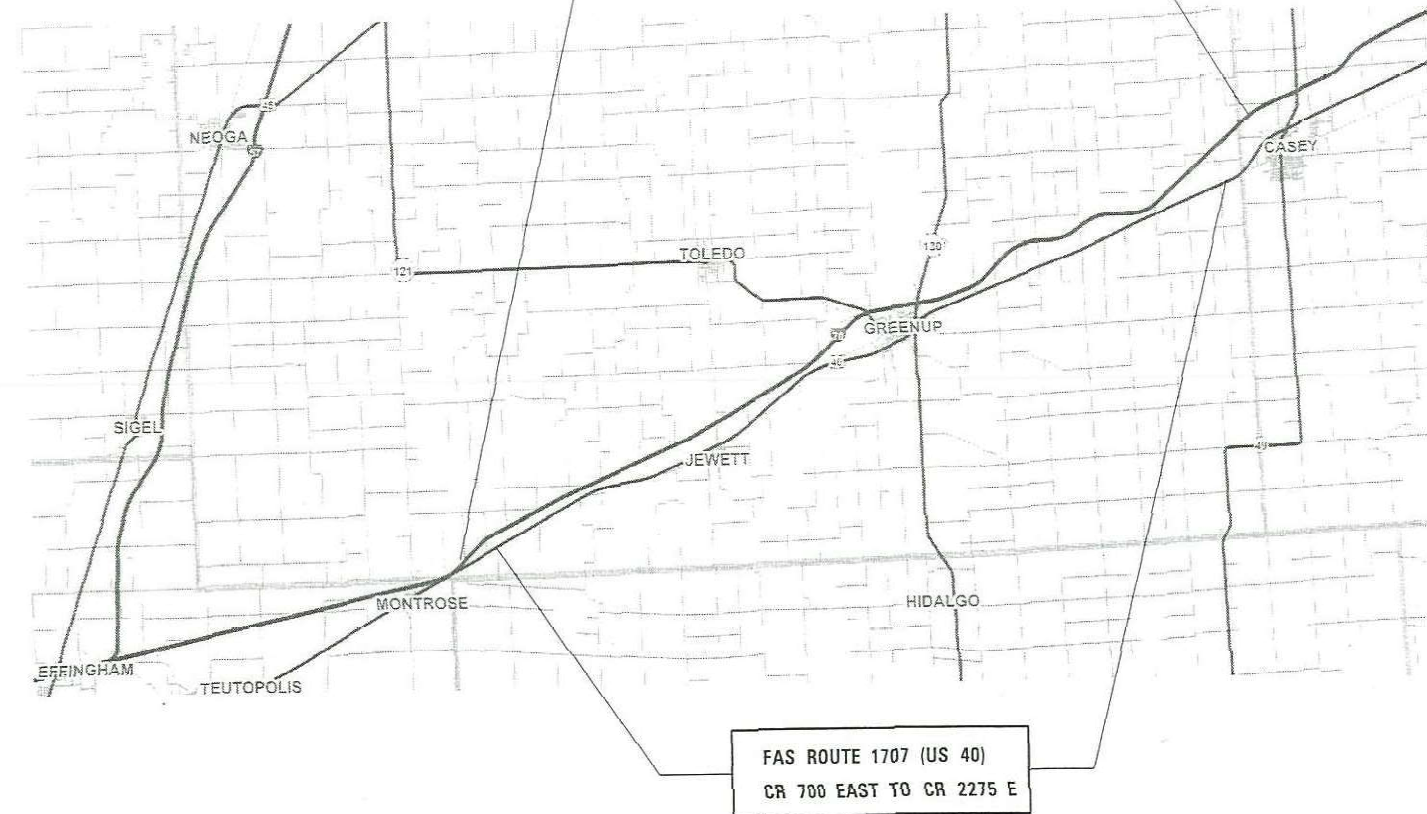
STATION 573+53 BK = 80+00 AH

# PROPOSED HIGHWAY PLANS

FAI ROUTE 70 & FAS 1707 (I-70 & US 40)  
SECTION D7 TREE REMOVAL 2023-3  
TREE REMOVAL  
CUMBERLAND COUNTY

C-97-013-23

FAI ROUTE 70 (I-70)  
STATION 60+90 TO STATION 653+57



FULL SIZE PLANS HAVE BEEN PREPARED USING STANDARD ENGINEERING SCALES. REDUCED SIZED PLANS WILL NOT CONFORM TO STANDARD SCALES. IN MAKING MEASUREMENTS ON REDUCED PLANS, THE ABOVE SCALES MAY BE USED.

J.U.L.I.E.  
JOINT UTILITY LOCATION INFORMATION FOR EXCAVATORS  
1-800-892-0123  
OR 811

PROJECT ENGINEER: BRIAN LEWIS  
PROJECT MANAGER: MYRA OLTMAN

CONTRACT NO. 74B69

GROSS LENGTH = 292,573 FT. = 55.4 MILE  
NET LENGTH = 292,573 FT. = 55.4 MILE

STATE OF ILLINOIS  
DEPARTMENT OF TRANSPORTATION

SUBMITTED OCTOBER 20 20 22  
Jeffrey P. Myer  
REGIONAL ENGINEER

December 9, 2022  
Eric A. Elk  
ENGINEER OF DESIGN AND ENVIRONMENT

December 9, 2022  
Steph M. Smith  
DIRECTOR OF HIGHWAYS PROJECT IMPLEMENTATION

PRINTED BY THE AUTHORITY  
OF THE STATE OF ILLINOIS

**GENERAL NOTES**

THIS PROJECT IS LOCATED ON FAI ROUTE 70 & US ROUTE 40 IN CUMBERLAND COUNTY. ON FAI 70 THE WORK BEGINS AT THE EFFINGHAM COUNTY LINE AND EXTENDS EAST TO THE CLARK COUNTY LINE. ON US ROUTE 40 FROM COUNTY ROAD 700 EAST TO COUNTY ROAD 2350 EAST. THE WORK INCLUDED IN SECTION D7 TREE REMOVAL 2023-3 CONSISTS OF DEAD TREE REMOVAL, TRAFFIC CONTROL AND ALL OTHER WORK TO COMPLETE THE SECTION.

THE TREE REMOVAL LOCATIONS ON THE PLANS ARE APPROXIMATE. THE RESIDENT ENGINEER WILL DETERMINE THE EXACT LOCATIONS. THE FOLLOWING IS A SCHEDULE OF TREE LOCATIONS ON THE ROUTES:

THE CONTRACTOR SHALL NOTIFY THE DISTRICT 7 RESIDENT ENGINEER THIRTY DAYS PRIOR TO THE START OF THE PROJECT.

ALL TREES CUT DOWN SHALL BE REMOVED FROM STATE RIGHT OF WAY AND DISPOSED OF ACCORDING TO THE "STANDARD SPECIFICATIONS FOR ROAD AND BRIDGE CONSTRUCTION" AND THE CONTRACT SPECIAL PROVISIONS.

BECAUSE OF ENVIRONMENTAL RESTRICTIONS ONLY TREES SHOWN ON THE US ROUTE 40 PLANS MAY BE REMOVED. BECAUSE OF ENVIRONMENTAL RESTRICTIONS NO TREES SHOWN ON THE FAI ROUTE 70 PLAN MAY BE REMOVED IN THE CROSS HATCHED AREA ON THE PLANS. THE RESIDENT ENGINEER MUST CONSULT WITH THE DISTRICT 7 ENVIRONMENTAL COORDINATOR FOR ANY ADDITIONAL TREE REMOVAL OTHER THAN LISTED ON THE PLANS.

US ROUTE 40		
TREE REMOVAL (6 TO 15 UNITS DIAMETER)	2000	UNITS
TREE REMOVAL (OVER 15 UNITS DIAMETER)	300	UNITS

FAI ROUTE 70 WESTBOUND		
TREE REMOVAL (6 TO 15 UNITS DIAMETER)	2400	UNITS
TREE REMOVAL (OVER 15 UNITS DIAMETER)	1200	UNITS

FAI ROUTE 70 EASTBOUND		
TREE REMOVAL (6 TO 15 UNITS DIAMETER)	2500	UNITS
TREE REMOVAL (OVER 15 UNITS DIAMETER)	750	UNITS

**INDEX OF SHEETS**

SHEET NO.	
1	COVER SHEET
2	GENERAL NOTES, INDEX OF SHEETS, HIGHWAY STANDARDS
3	SUMMARY OF QUANTITIES
4-23	TREE REMOVAL PLAN SHEETS - FAI 70
24-38	TREE REMOVAL PLAN SHEETS - FAS 1707

THE FOLLOWING STANDARDS ARE A PART OF THESE PLANS AND ARE INCLUDED FOLLOWING THE LAST NUMBERED SHEET OF THE PLANS.

000001 - 08	STANDARD SYMBOLS, ABBREVIATIONS, AND PATTERNS
701001 - 02	OFF-ROAD OPERATIONS, 2L, 2W, MORE THAN 15' (4.5 M)
701006 - 05	OFF-ROAD OPERATIONS, 2L, 2W, 15' (4.5 M) TO 24"
701011 - 04	OFF-ROAD MOVING OPERATIONS, 2L, 2W, DAY ONLY
701101 - 05	OFF-ROAD OPERATIONS, MULTI-LANE, 15'-24" FROM
701106 - 02	OFF-ROAD OPERATIONS, MULTI-LANE, MORE THAN 15'
701201 - 05	LANE CLOSURE, 2L, 2W, DAY ONLY, FOR SPEEDS > 45
701301 - 04	LANE CLOSURE, 2L, 2W, SHORT TIME OPERATIONS
701336 - 07	LANE CLOSURE, 2L, 2W, WORK AREAS IN SERIES, FOR SPEEDS > 45 MPH
701901 - 08	TRAFFIC CONTROL DEVICES

MODEL: Default  
 FILE NAME: p:\11504-pw\_bentley.com\p\11504\Documents\DOT\_Offices\District\_7\Project\741869\CADD\Drawings\CAD\Drawings\DOT\_741869\_sht-genote.dgn

USER NAME = Mona.Steffen	DESIGNED -	REVISED -
	DRAWN -	REVISED -
PLOT SCALE = 100.0000 / in.	CHECKED -	REVISED -
PLOT DATE = 10/25/2022	DATE -	REVISED -

**STATE OF ILLINOIS  
DEPARTMENT OF TRANSPORTATION**

**GENERAL NOTES, INDEX OF SHEETS  
AND HIGHWAY STANDARDS**

SCALE: SHEET OF SHEETS STA. TO STA.

F.A.* RTE.	SECTION	COUNTY	TOTAL SHEETS	SHEET NO.
*	D7 TREE REMOVAL 2023-3	CUMBERLAND	38	2
* FAI 70 & FAS 1707			CONTRACT NO. 74B69	
ILLINOIS   FED. AID PROJECT				

100% STATE

SUMMARY OF QUANTITIES			TOTAL QUANTITIES	CONSTRUCTION TYPE CODE		SUMMARY OF QUANTITIES			TOTAL QUANTITIES	CONSTRUCTION TYPE CODE	
CODE NO	ITEM	UNIT		FAS 1707 0031	FAI 70 0031	CODE NO	ITEM	UNIT		0031	
20100110	TREE REMOVAL ( 6 TO 15 UNITS DIAMETER)	UNIT	6900	2000	4900						
20100210	TREE REMOVAL ( OVER 15 UNITS DIAMETER)	UNIT	2250	300	1950						
67100100	MOBILIZATION	L SUM	1	0.5	0.5						
70100450	TRAFFIC CONTROL AND PROTECTION, STANDARD	L SUM	1	1							
	701201										
70100600	TRAFFIC CONTROL AND PROTECTION, STANDARD	L SUM	1		1						
	701336										
70107025	CHANGEABLE MESSAGE SIGN	CAL DA	56	28	28						

MODEL: De@uit  
 FILE NAME: pw:\ilgot-pw-bentley.com\PWD\DOT\Documents\DOT\_Offices\District: 7\Projects\74869\CAD\Drawn\CAD\Drawn\74869-sht-500.dgn

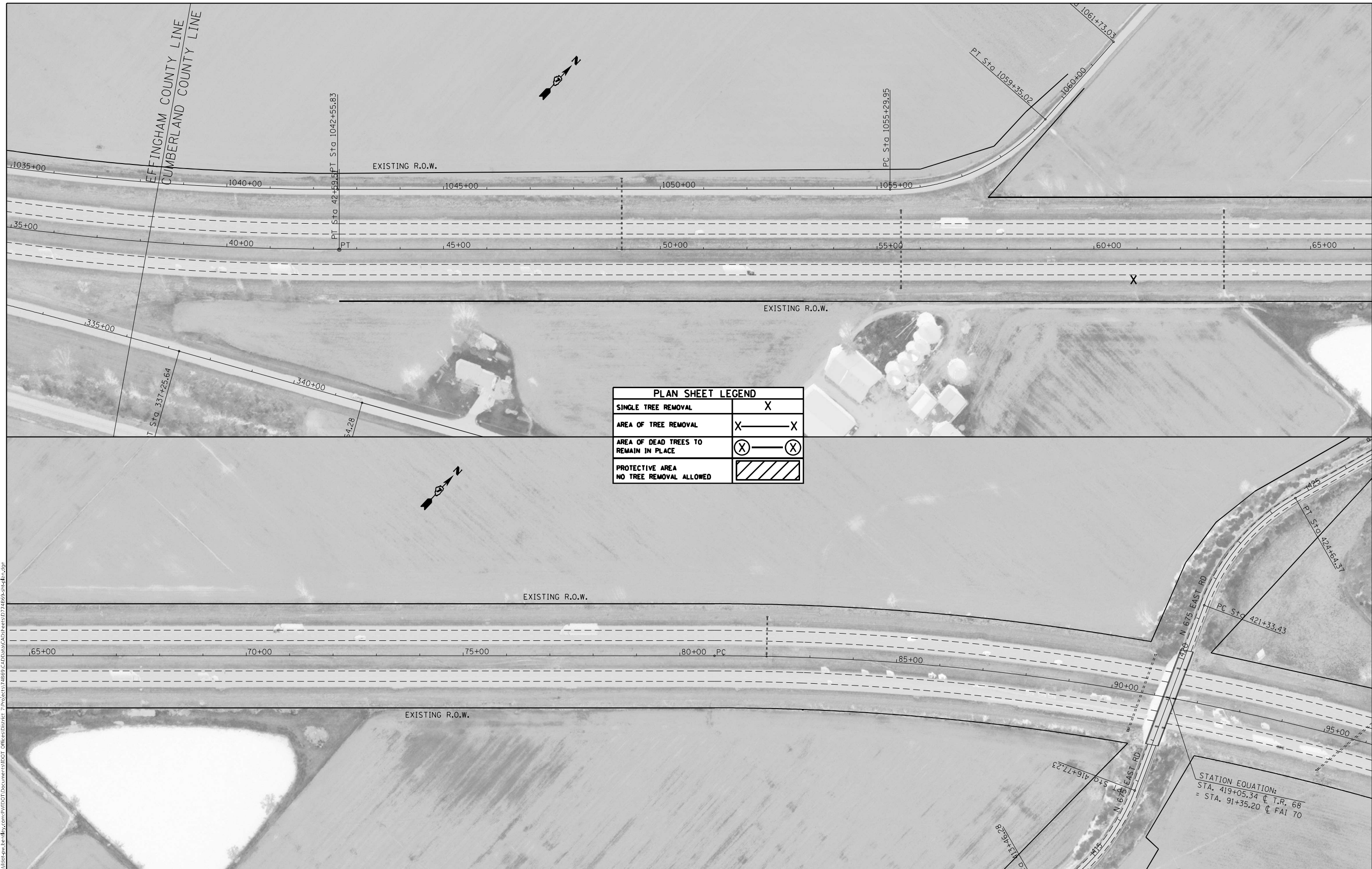
USER NAME = Mona.Steffen	DESIGNED -	REVISED -
	DRAWN -	REVISED -
PLOT SCALE = 100.0000' / in.	CHECKED -	REVISED -
PLOT DATE = 10/25/2022	DATE -	REVISED -

**STATE OF ILLINOIS  
DEPARTMENT OF TRANSPORTATION**

**SUMMARY OF QUANTITIES**

SCALE: SHEET OF SHEETS STA. TO STA.

F.A.* RTE.	SECTION	COUNTY	TOTAL SHEETS	SHEET NO.
* D7 TREE REMOVAL 2023-2	FAI 70 & FAS 1707	CUMBERLAND	38	3
			CONTRACT NO. 74869	
ILLINOIS FED. AID PROJECT				



PLAN SHEET LEGEND	
SINGLE TREE REMOVAL	X
AREA OF TREE REMOVAL	X — X
AREA OF DEAD TREES TO REMAIN IN PLACE	(X) — (X)
PROTECTIVE AREA NO TREE REMOVAL ALLOWED	

STATION EQUATION:  
 STA. 419+05.34 @ I.R. 68  
 = STA. 91+35.20 @ FAI 70

MODEL: Default  
 FILE: \\blm\p\project\new\benefit\com\p\w\dot\Documents\DOT\Office\Director\7\Project\74869\CADD\DATA\CAD\Sheet\74869-sh-1a.dwg

USER NAME = Mona.Steffen	DESIGNED -	REVISED -
	DRAWN -	REVISED -
PLOT SCALE = 200,0000' / in.	CHECKED -	REVISED -
PLOT DATE = 10/25/2022	DATE -	REVISED -


**STATE OF ILLINOIS  
 DEPARTMENT OF TRANSPORTATION**

**TREE LOCATION  
 FAI ROUTE 70 PLAN SHEETS**

SHEET OF SHEETS STA. 35+00 TO STA. 95+00

F.A. RTE.	SECTION	COUNTY	TOTAL SHEETS	SHEET NO.
*	D7 TREE REMOVAL 2023-3	CUMBERLAND	38	4
* FAI 70 & FAS 1707		CONTRACT NO. 74869		
ILLINOIS FED. AID PROJECT				



PLAN SHEET LEGEND	
SINGLE TREE REMOVAL	X
AREA OF TREE REMOVAL	X ——— X
AREA OF DEAD TREES TO REMAIN IN PLACE	(X) ——— (X)
PROTECTIVE AREA NO TREE REMOVAL ALLOWED	

MODEL: Default  
 FILE: \\mde\p\project\74869\CADD\Drawings\DOT\Drawings\Sheet\74869-SP-PLAN.dwg

USER NAME = Mona.Steffen	DESIGNED -	REVISED -
	DRAWN -	REVISED -
PLOT SCALE = 200,0000' / in.	CHECKED -	REVISED -
PLOT DATE = 10/25/2022	DATE -	REVISED -

**STATE OF ILLINOIS**  
**DEPARTMENT OF TRANSPORTATION**

TREE LOCATION			
FAI ROUTE 70 PLAN SHEETS			
SCALE:	SHEET	OF	SHEETS
			STA. 95+00 TO STA. 155+00

F.A.* RTE.	SECTION	COUNTY	TOTAL SHEETS	SHEET NO.
*	D7 TREE REMOVAL 2023-3	CUMBERLAND	38	5
* FAI 70 & FAS 1707			CONTRACT NO. 74B69	
ILLINOIS FED. AID PROJECT				



PLAN SHEET LEGEND	
SINGLE TREE REMOVAL	X
AREA OF TREE REMOVAL	X — X
AREA OF DEAD TREES TO REMAIN IN PLACE	(X) — (X)
PROTECTIVE AREA NO TREE REMOVAL ALLOWED	

MODEL: Default  
 FILE: \\na16c-pw-bu\subject-pw-benefits.com\PIV\DOT\Documents\DOT Office\Director 7\Projects\74869\CADD\Drawings\74869-sh-plan.dgn

USER NAME = Mona.Steffen	DESIGNED -	REVISED -
	DRAWN -	REVISED -
PLOT SCALE = 200,0000' / in.	CHECKED -	REVISED -
PLOT DATE = 10/25/2022	DATE -	REVISED -

**STATE OF ILLINOIS**  
**DEPARTMENT OF TRANSPORTATION**

TREE LOCATION			
FAI ROUTE 70 PLAN SHEETS			
SCALE:	SHEET	OF	SHEETS
			STA. 155+00 TO STA. 215+00

F.A.* RTE.	SECTION	COUNTY	TOTAL SHEETS	SHEET NO.
*	D7 TREE REMOVAL 2023-3	CUMBERLAND	38	6
* FAI 70 & FAS 1707		CONTRACT NO. 74B69		
ILLINOIS FED. AID PROJECT				





PLAN SHEET LEGEND	
SINGLE TREE REMOVAL	X
AREA OF TREE REMOVAL	X — X
AREA OF DEAD TREES TO REMAIN IN PLACE	(X) — (X)
PROTECTIVE AREA NO TREE REMOVAL ALLOWED	[Hatched Box]

MODEL: Default  
 FILE: \\naafpc-prod\subject-new\benefits.com\PIV\DOT\Documents\DOT Office\Sheet\74869\CADD\Sheet\74869-sh-1-plan.dgn

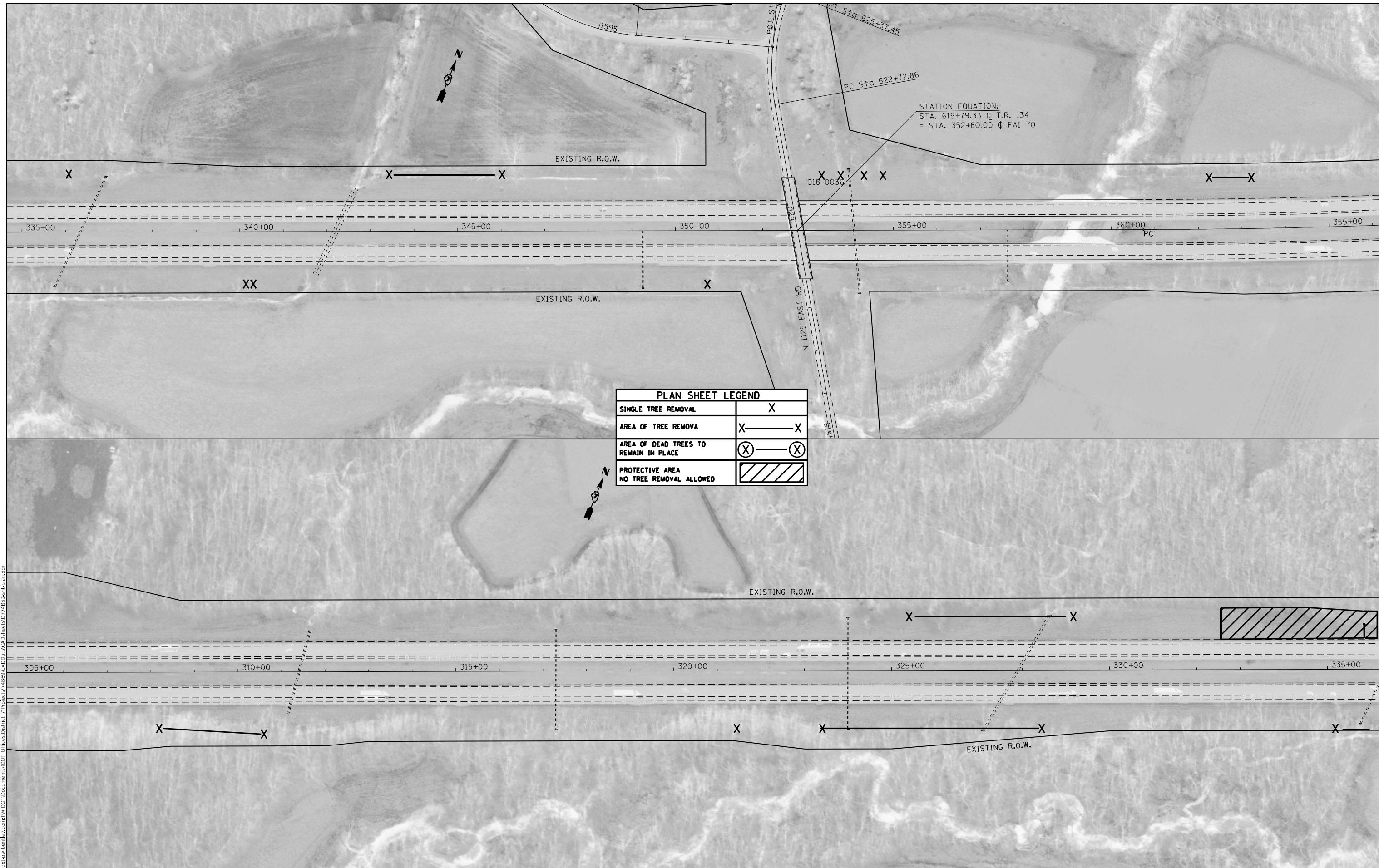
USER NAME = Mona.Steffen	DESIGNED -	REVISED -
PLOT SCALE = 200,0000' / in.	DRAWN -	REVISED -
PLOT DATE = 10/25/2022	CHECKED -	REVISED -
	DATE -	REVISED -

**STATE OF ILLINOIS**  
**DEPARTMENT OF TRANSPORTATION**

<b>TREE LOCATION</b>			
<b>FAI ROUTE 70 PLAN SHEETS</b>			
SCALE:	SHEET	OF	SHEETS
	275+00		335+00

F.A. RTE.	SECTION	COUNTY	TOTAL SHEETS	SHEET NO.
*	D7 TREE REMOVAL 2023-3	CUMBERLAND	38	8
* FAI 70 & FAS 1707		CONTRACT NO. 74869		
ILLINOIS FED. AID PROJECT				





PLAN SHEET LEGEND	
SINGLE TREE REMOVAL	X
AREA OF TREE REMOVAL	X — X
AREA OF DEAD TREES TO REMAIN IN PLACE	(X) — (X)
PROTECTIVE AREA NO TREE REMOVAL ALLOWED	[Hatched Box]

MODEL: Default  
 FILE: \\naulpc01\public\aw\_bentley.com\PIV\DOT\Documents\DOT Office\Director\748669\CADD\Drawings\748669-shp-plan.dwg

USER NAME = Mona.Steffen	DESIGNED -	REVISED -
PLOT SCALE = 200,0000' / in.	DRAWN -	REVISED -
PLOT DATE = 10/25/2022	CHECKED -	REVISED -
	DATE -	REVISED -

**STATE OF ILLINOIS**  
**DEPARTMENT OF TRANSPORTATION**

TREE LOCATION			
FAI ROUTE 70 PLAN SHEETS			
SCALE:	SHEET	OF	SHEETS
			STA. 335+00 TO STA. 395+00

F.A. RTE.	SECTION	COUNTY	TOTAL SHEETS	SHEET NO.
*	D7 TREE REMOVAL 2023-3	CUMBERLAND	38	9
* FAI 70 & FAS 1707		CONTRACT NO. 74B69		
ILLINOIS FED. AID PROJECT				



PLAN SHEET LEGEND	
SINGLE TREE REMOVAL	X
AREA OF TREE REMOVAL	X — X
AREA OF DEAD TREES TO REMAIN IN PLACE	X(X) — X(X)
PROTECTIVE AREA NO TREE REMOVAL ALLOWED	[Hatched Box]

MODEL: Default  
 FILE: \\nautilus.pva.usdnet-cw.bea.fwy.com\FWIDOT\Documents\DOT Office\Dir\rdet\_7\Project\74869\CADD\Drawings\CAD\Drawings\74869-sh-Plan.dgn

USER NAME = Mona.Steffen	DESIGNED -	REVISED -
PLOT SCALE = 200,0000' / in.	DRAWN -	REVISED -
PLOT DATE = 10/25/2022	CHECKED -	REVISED -
	DATE -	REVISED -

**STATE OF ILLINOIS**  
**DEPARTMENT OF TRANSPORTATION**

TREE LOCATION			
FAI ROUTE 70 PLAN SHEETS			
SCALE:	SHEET	OF	SHEETS
	STA. 395+00		TO STA. 455+00

F.A.* RTE.	SECTION	COUNTY	TOTAL SHEETS	SHEET NO.
*	D7 TREE REMOVAL 2023-3	CUMBERLAND	38	10
* FAI 70 & FAS 1707		CONTRACT NO. 74869		
ILLINOIS FED. AID PROJECT				



PLAN SHEET LEGEND	
SINGLE TREE REMOVAL	X
AREA OF TREE REMOVAL	X — X
AREA OF DEAD TREES TO REMAIN IN PLACE	⊗ — ⊗
PROTECTIVE AREA NO TREE REMOVAL ALLOWED	

EQUATION:  
 820+60.42 C C.H. 2  
 = 482+10.00 C FAI 70

MODEL: Default  
 FILE: \\nautilus.pva\subject-cw-bee\my.com\FW\DOT\Documents\DOT Office\Dir\ref\_7\Project\74869\CADD\Drawings\DOT\74869-FAI-70-Plan.dwg

USER NAME = Mona.Steffen	DESIGNED -	REVISED -
	DRAWN -	REVISED -
PLOT SCALE = 200,0000' / in.	CHECKED -	REVISED -
PLOT DATE = 10/25/2022	DATE -	REVISED -

**STATE OF ILLINOIS  
 DEPARTMENT OF TRANSPORTATION**

**TREE LOCATION  
 FAI ROUTE 70 PLAN SHEETS**

SCALE: SHEET OF SHEETS STA. 455+00 TO STA. 515+00

F.A. RTE.	SECTION	COUNTY	TOTAL SHEETS	SHEET NO.
*	D7 TREE REMOVAL 2023-3	CUMBERLAND	38	11
* FAI 70 & FAS 1707		CONTRACT NO. 74869		
ILLINOIS FED. AID PROJECT				



PLAN SHEET LEGEND	
SINGLE TREE REMOVAL	X
AREA OF TREE REMOVAL	X ——— X
AREA OF DEAD TREES TO REMAIN IN PLACE	(X) ——— (X)
PROTECTIVE AREA NO TREE REMOVAL ALLOWED	

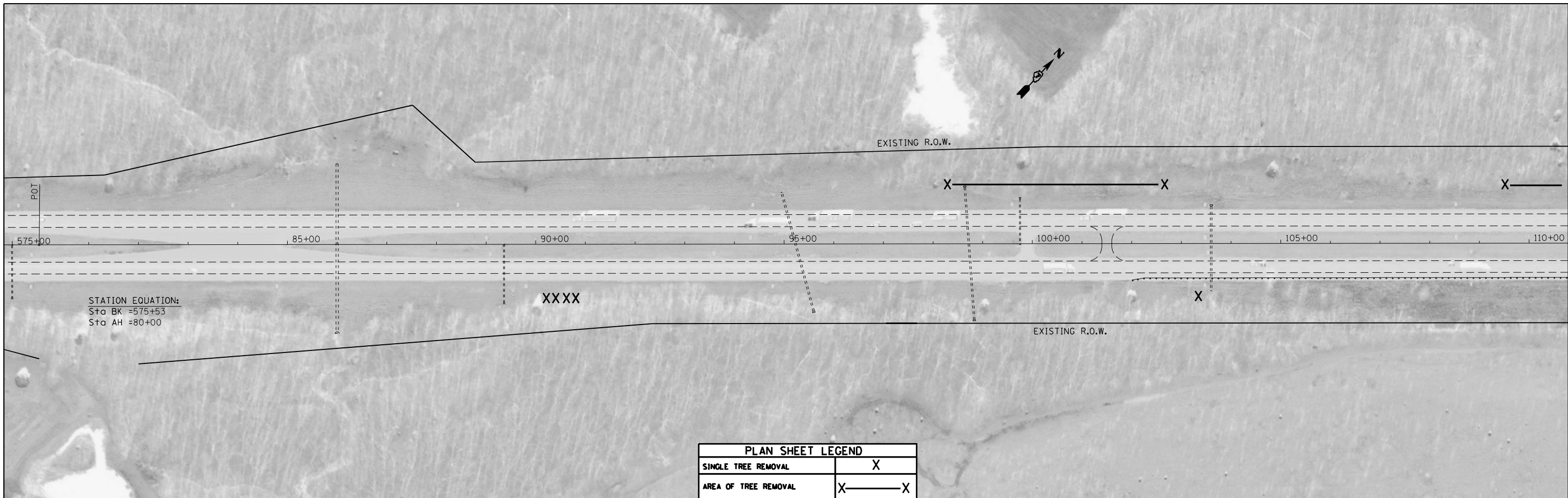
MODEL: Default  
 FILE: \\mdebe\p\build\caw\benef\com\p\w\DOT\Documents\DOT Office\Dir\refr\_7\Project\74869\CADD\Drawings\74869-shp\plan.dwg

USER NAME = Mona.Steffen	DESIGNED -	REVISED -
	DRAWN -	REVISED -
PLOT SCALE = 200,0000' / in.	CHECKED -	REVISED -
PLOT DATE = 10/25/2022	DATE -	REVISED -

**STATE OF ILLINOIS**  
**DEPARTMENT OF TRANSPORTATION**

TREE LOCATION			
FAI ROUTE 70 PLAN SHEETS			
SCALE:	SHEET	OF SHEETS	STA. 515+00 TO STA. 575+00

F.A.* RTE.	SECTION	COUNTY	TOTAL SHEETS	SHEET NO.
*	D7 TREE REMOVAL 2023-3	CUMBERLAND	38	12
* FAI 70 & FAS 1707			CONTRACT NO. 74869	
ILLINOIS FED. AID PROJECT				

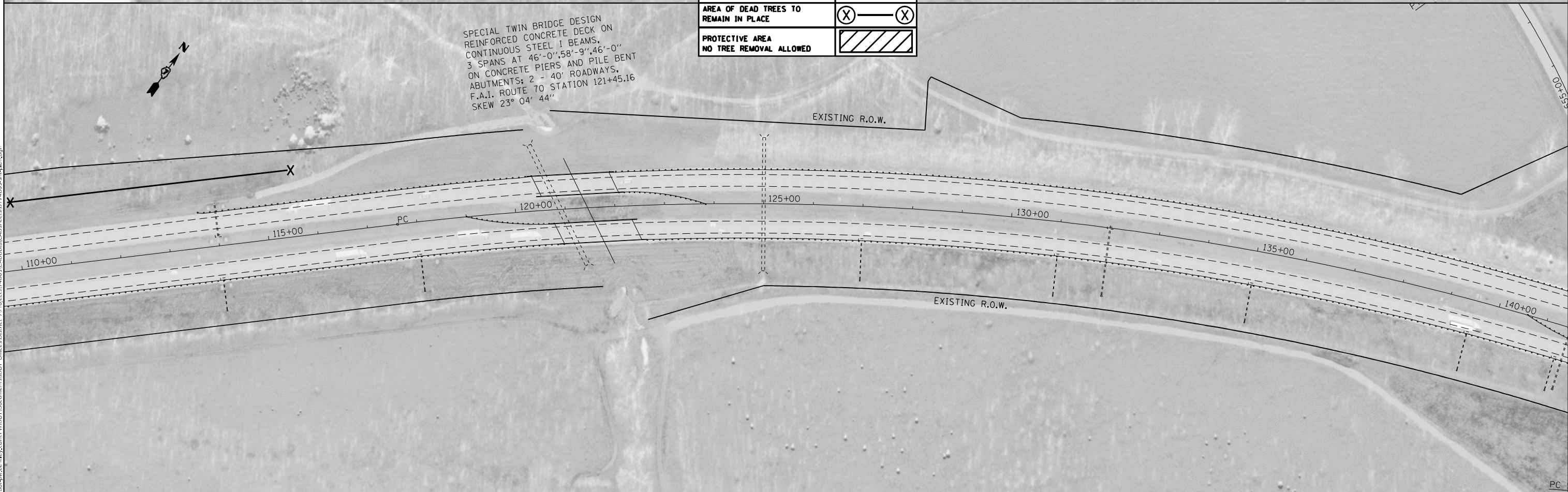


STATION EQUATION:  
Sta BK = 575+53  
Sta AH = 80+00

XXXX

PLAN SHEET LEGEND	
SINGLE TREE REMOVAL	X
AREA OF TREE REMOVAL	X ——— X
AREA OF DEAD TREES TO REMAIN IN PLACE	(X) ——— (X)
PROTECTIVE AREA NO TREE REMOVAL ALLOWED	

SPECIAL TWIN BRIDGE DESIGN  
REINFORCED CONCRETE DECK ON  
CONTINUOUS STEEL I BEAMS.  
3 SPANS AT 46'-0", 58'-9", 46'-0"  
ON CONCRETE PIERS AND PILE BENT  
ABUTMENTS; 2 - 40' ROADWAYS.  
F.A.I. ROUTE 70 STATION 121+45.16  
SKEW 23° 04' 44"



MODEL: Default  
 FILE: \\nautilus.pw.usdnet-cw-backend.com\P\W\DOT\Documents\DOT Office\Dir\refr 7\Project\74869\CADD\Drawings\DOT\74869-Plan.dwg

USER NAME = Mona.Steffen	DESIGNED -	REVISED -
PLOT SCALE = 200,0000' / in.	DRAWN -	REVISED -
PLOT DATE = 10/25/2022	CHECKED -	REVISED -
	DATE -	REVISED -

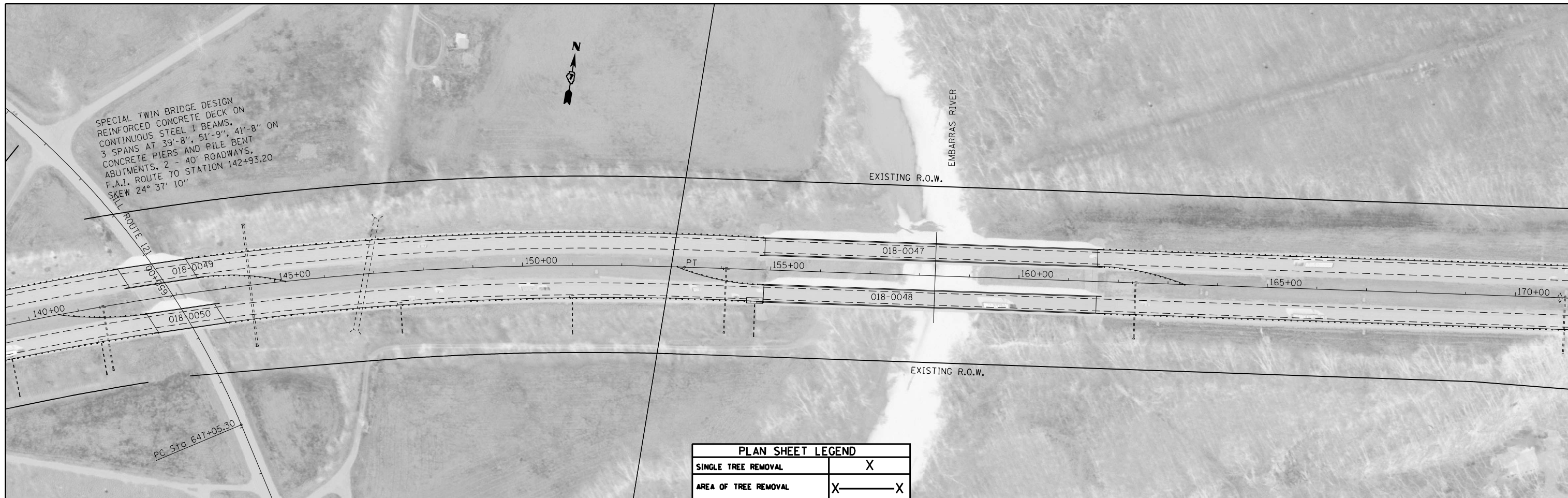
STATE OF ILLINOIS  
DEPARTMENT OF TRANSPORTATION

TREE LOCATION  
FAI ROUTE 70 PLAN SHEETS

SCALE: SHEET OF SHEETS STA. 575+00 TO STA. 140+00

F.A. RTE.	SECTION	COUNTY	TOTAL SHEETS	SHEET NO.
*	D7 TREE REMOVAL 2023-3	CUMBERLAND	38	13
* FAI 70 & FAS 1707			CONTRACT NO. 74869	
ILLINOIS FED. AID PROJECT				

SPECIAL TWIN BRIDGE DESIGN  
 REINFORCED CONCRETE DECK ON  
 CONTINUOUS STEEL I BEAMS,  
 3 SPANS AT 39'-8", 51'-9", 41'-8" ON  
 CONCRETE PIERS AND PILE BENT  
 ABUTMENTS, 2 - 40' ROADWAYS,  
 F.A.I. ROUTE 70 STATION 142+93.20  
 SKEW 24° 37' 10"



PLAN SHEET LEGEND	
SINGLE TREE REMOVAL	X
AREA OF TREE REMOVAL	X ——— X
AREA OF DEAD TREES TO REMAIN IN PLACE	(X) ——— (X)
PROTECTIVE AREA NO TREE REMOVAL ALLOWED	



MODEL: Default  
 FILE NAME: p:\ulldat-pw-bentley.com\p\iddot\Documents\DOT Office\District 7\Projects\74869\CADD\data\CAD\Sheets\74869-spc-plan.dgn

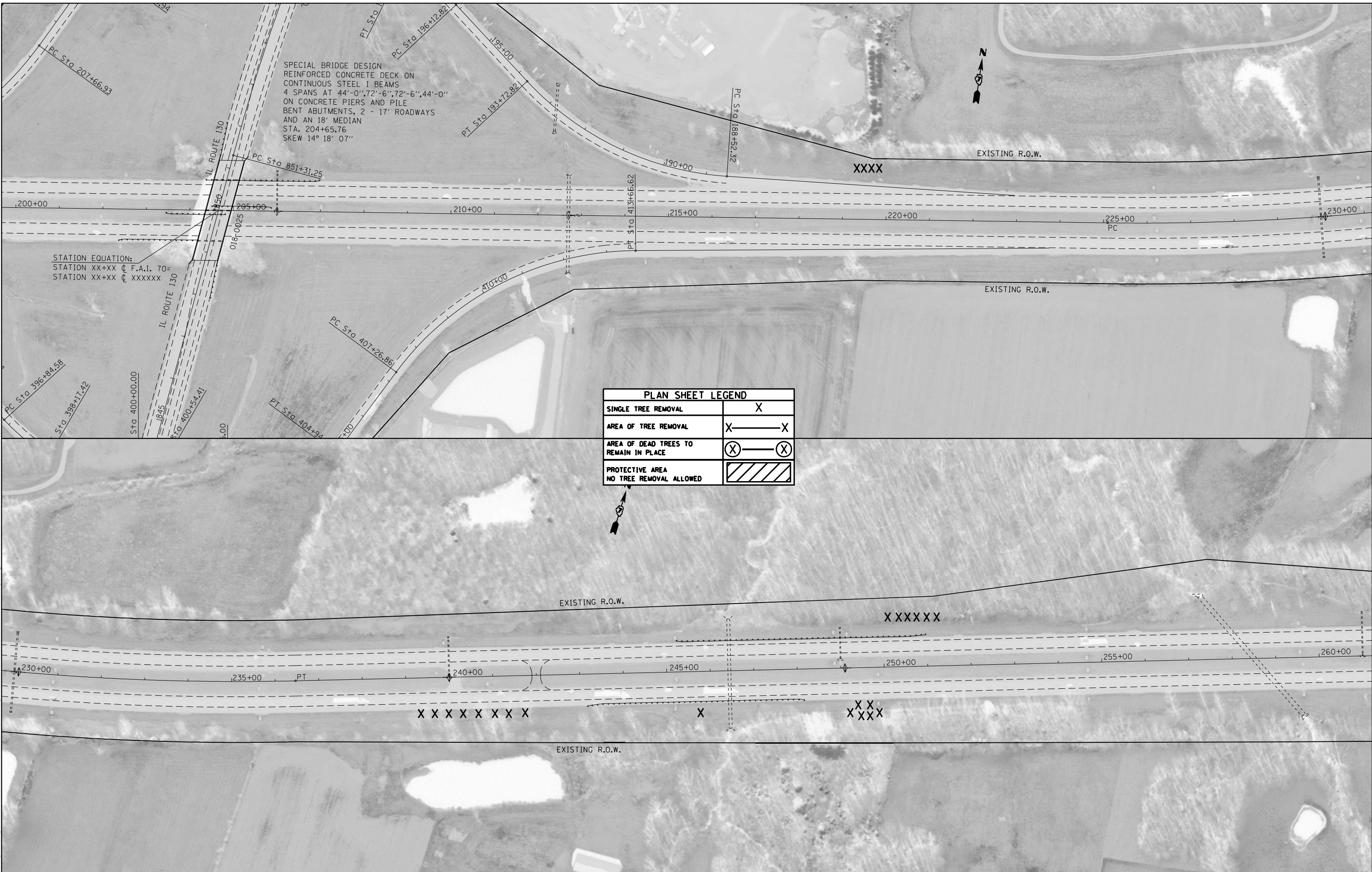
USER NAME = Mona.Steffen	DESIGNED -	REVISED -
PLOT SCALE = 200,0000' / in.	DRAWN -	REVISED -
PLOT DATE = 10/25/2022	CHECKED -	REVISED -
	DATE -	REVISED -

**STATE OF ILLINOIS  
 DEPARTMENT OF TRANSPORTATION**

**TREE LOCATION  
 FAI ROUTE 70 PLAN SHEETS**

SCALE: SHEET OF SHEETS STA. 140+00 TO STA. 200+00

F.A.* RTE.	SECTION	COUNTY	TOTAL SHEETS	SHEET NO.
*	D7 TREE REMOVAL 2023-3	CUMBERLAND	38	14
* FAI 70 & FAS 1707		CONTRACT NO. 74869		
ILLINOIS FED. AID PROJECT				



SPECIAL BRIDGE DESIGN  
 REINFORCED CONCRETE DECK ON  
 CONTINUOUS STEEL I BEAMS  
 4 SPANS AT 44'-0", 72'-6", 72'-6", 44'-0"  
 ON CONCRETE PIERS AND PILE  
 BENT ABUTMENTS, 2 - 17' ROADWAYS  
 AND AN 18' MEDIAN  
 STA. 204+65.76  
 SKEW 14° 18' 07"

STATION EQUATION:  
 STATION XX+XX @ F.A.I. 70=  
 STATION XX+XX @ XXXXXX

PLAN SHEET LEGEND	
SINGLE TREE REMOVAL	X
AREA OF TREE REMOVAL	X ——— X
AREA OF DEAD TREES TO REMAIN IN PLACE	(X) ——— (X)
PROTECTIVE AREA NO TREE REMOVAL ALLOWED	

MODEL: Default  
 FILE: \\nautilus.pva.usdnet-cw.bentley.com\PV\DOT\Documents\DOT Office\Director\_T\Projects\74869\CADD\Drawings\CAD\Drawings\74869-shp-plan.dwg

USER NAME = Mona.Steffen	DESIGNED -	REVISED -
	DRAWN -	REVISED -
PLOT SCALE = 200,0000' / in.	CHECKED -	REVISED -
PLOT DATE = 10/25/2022	DATE -	REVISED -

**STATE OF ILLINOIS  
 DEPARTMENT OF TRANSPORTATION**

TREE LOCATION FAI ROUTE 70 PLAN SHEETS			
SCALE:	SHEET	OF	SHEETS
	STA. 200+00	TO	STA. 260+00

F.A. RTE.	SECTION	COUNTY	TOTAL SHEETS	SHEET NO.
*	D7 TREE REMOVAL 2023-3	CUMBERLAND	38	15
* FAI 70 & FAS 1707		CONTRACT NO. 74869		
ILLINOIS FED. AID PROJECT				



PLAN SHEET LEGEND	
SINGLE TREE REMOVAL	X
AREA OF TREE REMOVAL	X — X
AREA OF DEAD TREES TO REMAIN IN PLACE	(X) — (X)
PROTECTIVE AREA NO TREE REMOVAL ALLOWED	

MODEL: Default  
 FILE: \\naulc01-pw-bentley.com\P\DOT\Documents\DOT Office\Director\_7\Projects\74869\CADD\Drawings\74869-Plan.dwg

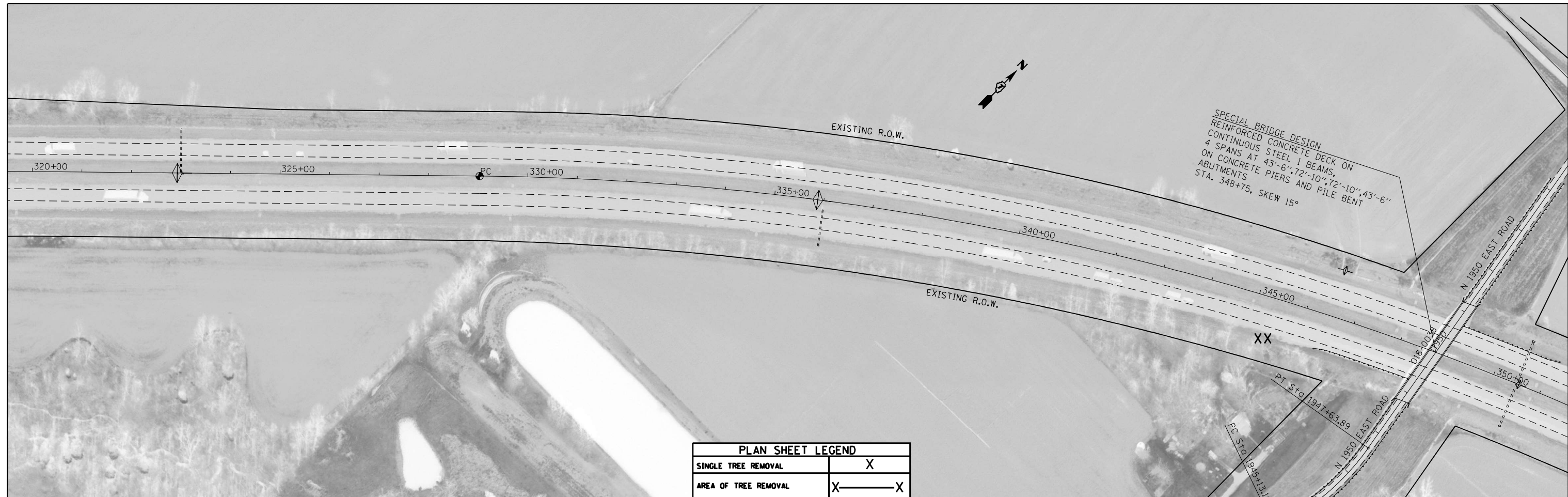
USER NAME = Mona.Steffen	DESIGNED -	REVISED -
PLOT SCALE = 200,0000' / in.	DRAWN -	REVISED -
PLOT DATE = 10/25/2022	CHECKED -	REVISED -
	DATE -	REVISED -

**STATE OF ILLINOIS**  
**DEPARTMENT OF TRANSPORTATION**

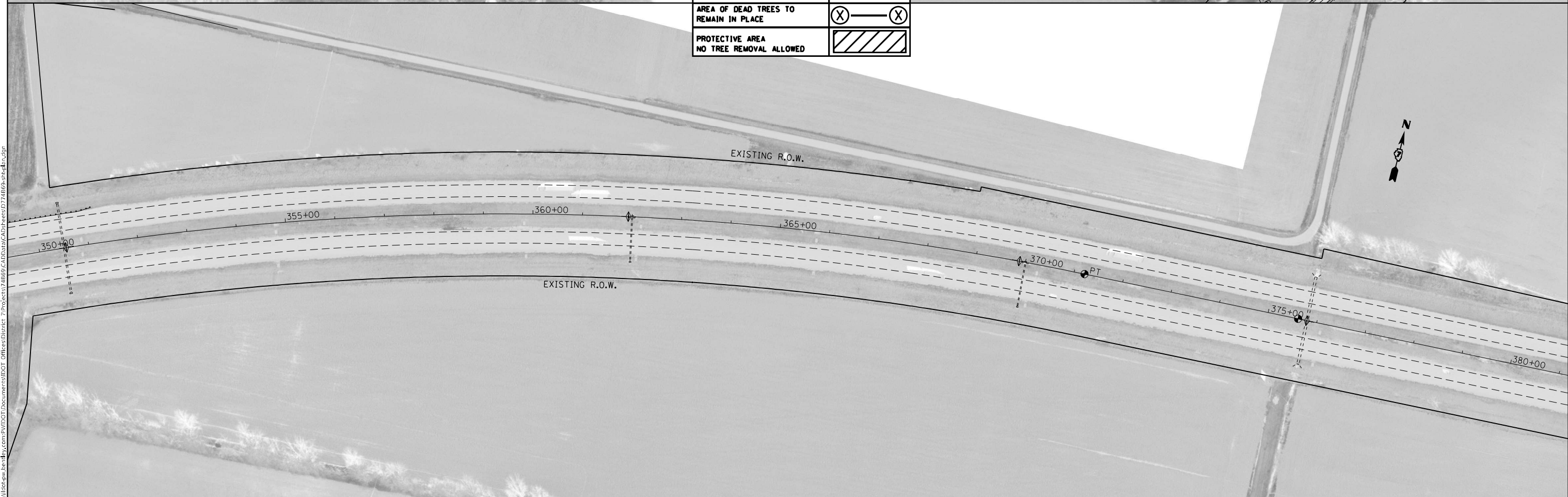
TREE LOCATION			
FAI ROUTE 70 PLAN SHEETS			
SCALE:	SHEET	OF	SHEETS
			STA. 260+00 TO STA. 320+00

F.A.* RTE.	SECTION	COUNTY	TOTAL SHEETS	SHEET NO.
*	D7 TREE REMOVAL 2023-3	CUMBERLAND	38	16
* FAI 70 & FAS 1707		CONTRACT NO. 74B69		
ILLINOIS FED. AID PROJECT				





PLAN SHEET LEGEND	
SINGLE TREE REMOVAL	X
AREA OF TREE REMOVAL	X ——— X
AREA OF DEAD TREES TO REMAIN IN PLACE	(X) ——— (X)
PROTECTIVE AREA NO TREE REMOVAL ALLOWED	



MODEL: Default  
 FILE: \\nafile\p\subsect-cw-bead\p\p\p\DOT Documents\DOT Office\Director 7\Project\74869\CADD\Drawings\74869-sh-11n.dwg

USER NAME = Mona.Steffen	DESIGNED -	REVISED -
	DRAWN -	REVISED -
PLOT SCALE = 200,0000' / in.	CHECKED -	REVISED -
PLOT DATE = 10/25/2022	DATE -	REVISED -

**STATE OF ILLINOIS**  
**DEPARTMENT OF TRANSPORTATION**

**TREE LOCATION**  
**FAI ROUTE 70 PLAN SHEETS**

SCALE: SHEET OF SHEETS STA. 320+00 TO STA. 380+00

F.A.* RTE.	SECTION	COUNTY	TOTAL SHEETS	SHEET NO.
*	D7 TREE REMOVAL 2023-3	CUMBERLAND	38	17
* FAI 70 & FAS 1707		CONTRACT NO. 74869		
		ILLINOIS	FED. AID PROJECT	



EXISTING R.O.W.

380+00

385+00

390+00

PC

395+00

400+00

405+00

410+00

EXISTING R.O.W.

PLAN SHEET LEGEND	
SINGLE TREE REMOVAL	X
AREA OF TREE REMOVAL	X ——— X
AREA OF DEAD TREES TO REMAIN IN PLACE	(X) ——— (X)
PROTECTIVE AREA NO TREE REMOVAL ALLOWED	

SPECIAL BRIDGE DESIGN  
 REINFORCED CONCRETE DECK ON  
 CONTINUOUS STEEL I BEAMS  
 4 SPANS AT 41'-6", 73'-0", 73'-0", 41'-6"  
 ON CONCRETE PIERS AND PILE  
 BENT ABUTMENTS, 26'-0" ROADWAY  
 F.A.I. ROUTE TO STATION 434+42.94, SKEW 15°



EXISTING R.O.W.

410+00

415+00

420+00

PT 425+00

430+00

435+00

PC 440+00

EXISTING R.O.W.

CHECK THIS ROW FOR ACCURACY.

PT Sta 2197+47.88

N 2100 EAST ROAD

N 2100 EAST ROAD

PC Sta 2202+52.11

MODEL: Default  
FILE: \\naulic-pw-bentley.com\P\DOT\Documents\DOT Office\Director\Projects\74869\CADD\DATA\CAD\Sheet\74869-sh-14n.dgn

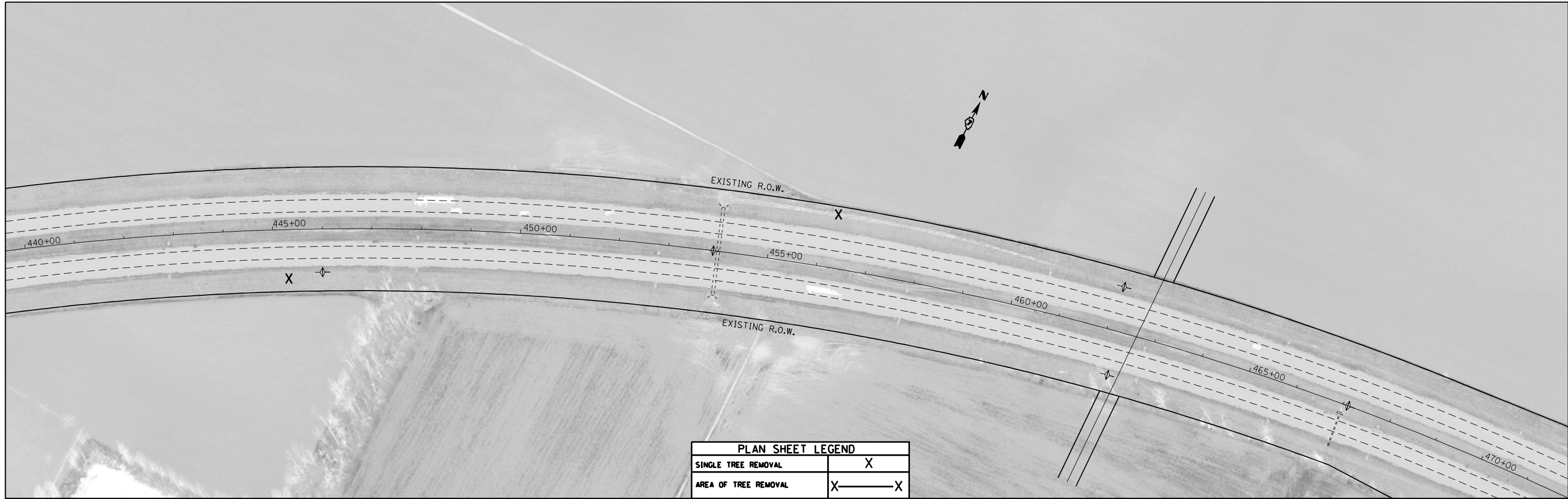
USER NAME = Mona.Steffen	DESIGNED -	REVISED -
	DRAWN -	REVISED -
PLOT SCALE = 200,0000' / in.	CHECKED -	REVISED -
PLOT DATE = 10/25/2022	DATE -	REVISED -


**STATE OF ILLINOIS  
 DEPARTMENT OF TRANSPORTATION**

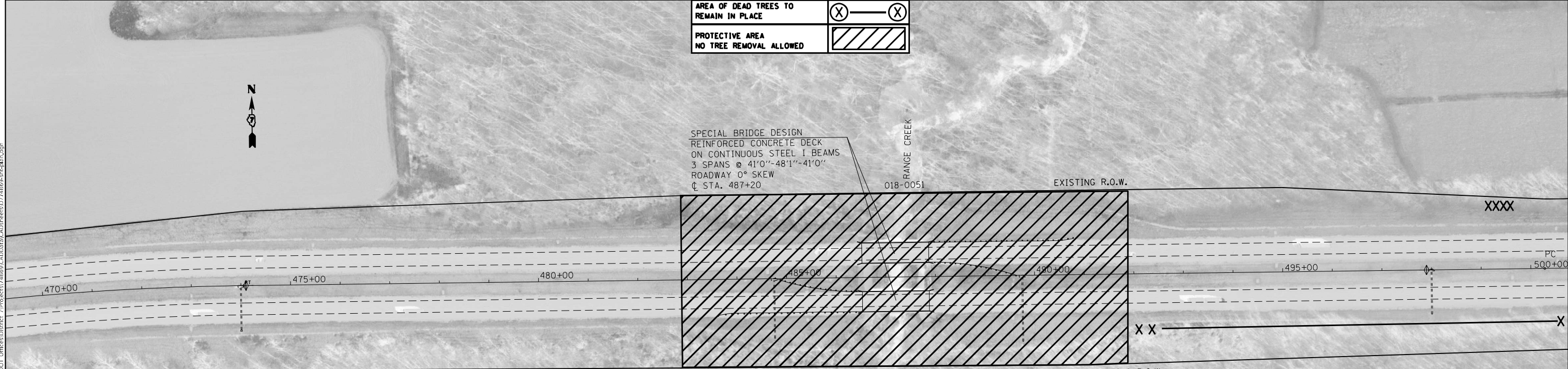
**TREE LOCATION  
 FAI ROUTE 70 PLAN SHEETS**

SCALE: SHEET OF SHEETS STA. 380+00 TO STA. 440+00

F.A. RTE.	SECTION	COUNTY	TOTAL SHEETS	SHEET NO.
*	D7 TREE REMOVAL 2023-3	CUMBERLAND	38	18
* FAI 70 & FAS 1707		CONTRACT NO. 74869		
ILLINOIS FED. AID PROJECT				



PLAN SHEET LEGEND	
SINGLE TREE REMOVAL	X
AREA OF TREE REMOVAL	X ——— X
AREA OF DEAD TREES TO REMAIN IN PLACE	(X) ——— (X)
PROTECTIVE AREA NO TREE REMOVAL ALLOWED	



SPECIAL BRIDGE DESIGN  
 REINFORCED CONCRETE DECK  
 ON CONTINUOUS STEEL I BEAMS  
 3 SPANS @ 41'0" - 48'1" - 41'0"  
 ROADWAY 0° SKEW  
 ⌋ STA. 487+20

RANGE CREEK  
 018-0051

018-0052

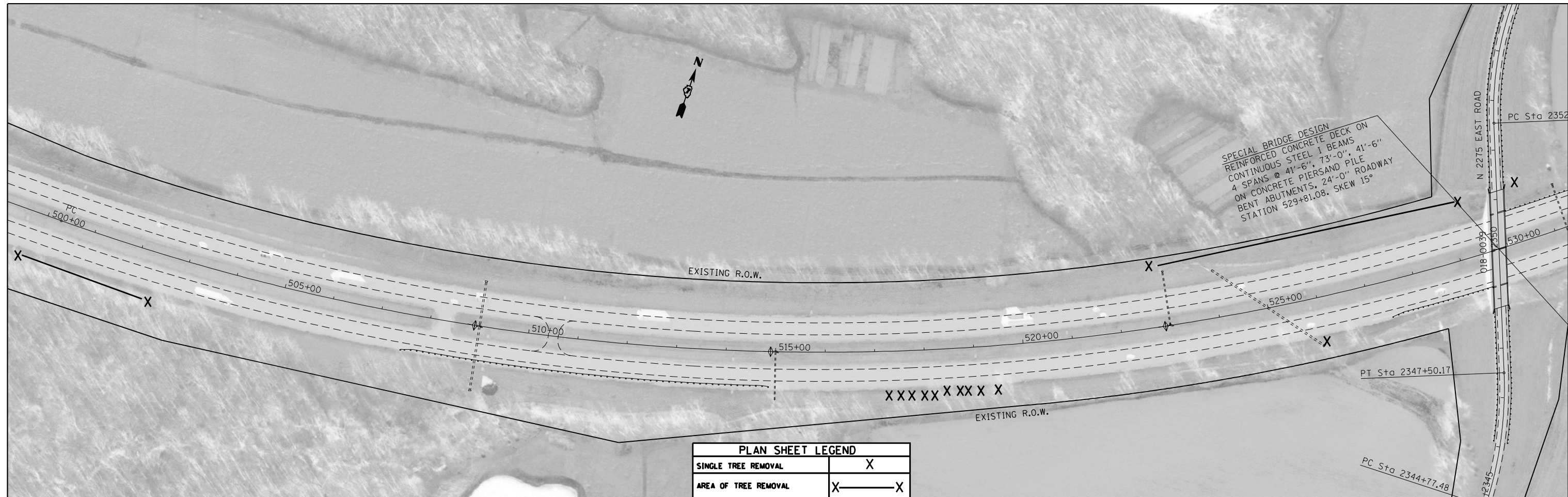
MODEL: Default  
 FILE: \\nautilus.pva.usdnet-cw.bentley.com\FW\DOT\Documents\DOT Office\Director\_7\Projects\74869\CADD\Drawings\CAD\Sheets\74869-sh-Plan.dwg

USER NAME = Mona.Steffen	DESIGNED -	REVISED -
PLOT SCALE = 200,0000' / in.	DRAWN -	REVISED -
PLOT DATE = 10/25/2022	CHECKED -	REVISED -
	DATE -	REVISED -

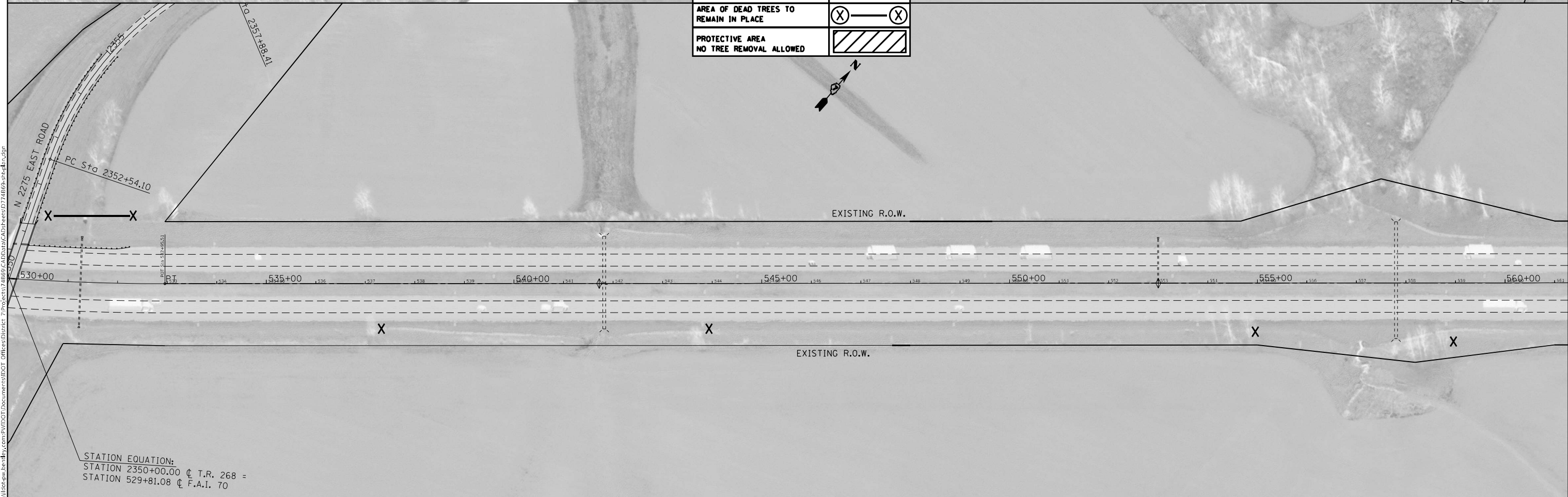
**STATE OF ILLINOIS  
 DEPARTMENT OF TRANSPORTATION**

<b>TREE LOCATION</b>	
<b>FAI ROUTE 70 PLAN SHEETS</b>	
SCALE:	SHEET OF SHEETS STA. 440+00 TO STA. 500+00

F.A.* RTE.	SECTION	COUNTY	TOTAL SHEETS	SHEET NO.
*	D7 TREE REMOVAL 2023-3	CUMBERLAND	38	19
* FAI 70 & FAS 1707		CONTRACT NO. 74869		
ILLINOIS FED. AID PROJECT				



PLAN SHEET LEGEND	
SINGLE TREE REMOVAL	X
AREA OF TREE REMOVAL	X ——— X
AREA OF DEAD TREES TO REMAIN IN PLACE	(X) ——— (X)
PROTECTIVE AREA NO TREE REMOVAL ALLOWED	



MODEL: Default  
 FILE: \\nautilus.pva.usdnet-pw-bead-ny.com\P\INDOT\Documents\DOT Office\Dir\Dir\74869\CADD\Drawings\CAD\Drawings\74869-01-01.dwg  
 PROJECT: 74869\CADD\Drawings\CAD\Drawings\74869-01-01.dwg

USER NAME = Mona.Steffen	DESIGNED -	REVISED -
PLOT SCALE = 200,0000' / in.	DRAWN -	REVISED -
PLOT DATE = 10/25/2022	CHECKED -	REVISED -
	DATE -	REVISED -

**STATE OF ILLINOIS  
 DEPARTMENT OF TRANSPORTATION**

TREE LOCATION FAI ROUTE 70 PLAN SHEETS			
SCALE:	SHEET	OF	SHEETS
			STA. 500+00 TO STA. 560+00

F.A. RTE.	SECTION	COUNTY	TOTAL SHEETS	SHEET NO.
*	D7 TREE REMOVAL 2023-3	CUMBERLAND	38	20
* FAI 70 & FAS 1707		CONTRACT NO. 74869		
ILLINOIS FED. AID PROJECT				



PLAN SHEET LEGEND	
SINGLE TREE REMOVAL	X
AREA OF TREE REMOVAL	X ——— X
AREA OF DEAD TREES TO REMAIN IN PLACE	(X) ——— (X)
PROTECTIVE AREA NO TREE REMOVAL ALLOWED	

MODEL: Default  
 FILE: \\na16f2-pw\subject-cw\benefit.com\PIV\DOT\Documents\DOT Office\Director 7\Project\74869\CADD\DATA\CAD\Sheet\074869-shp-plan.dgn

USER NAME = Mona.Steffen	DESIGNED -	REVISED -
	DRAWN -	REVISED -
PLOT SCALE = 200,0000' / in.	CHECKED -	REVISED -
PLOT DATE = 10/25/2022	DATE -	REVISED -

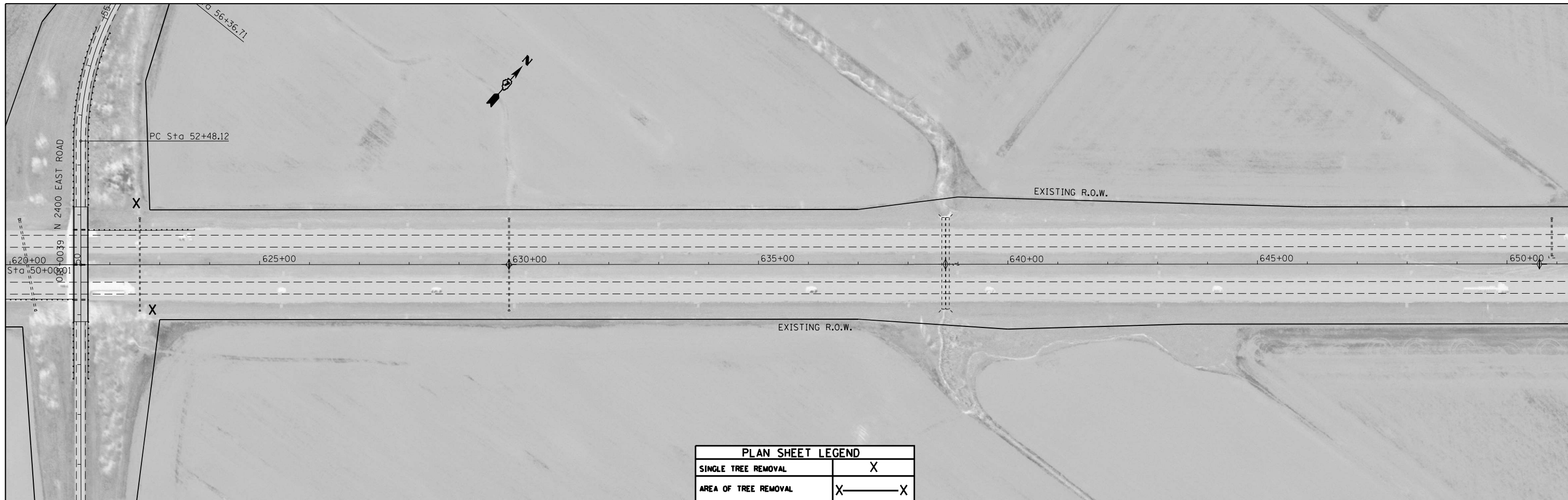
**STATE OF ILLINOIS**  
**DEPARTMENT OF TRANSPORTATION**

**TREE LOCATION**  
**FAI ROUTE 70 PLAN SHEETS**

SCALE: SHEET OF SHEETS STA. 560+00 TO STA. 620+00

F.A.* RTE.	SECTION	COUNTY	TOTAL SHEETS	SHEET NO.
*	D7 TREE REMOVAL 2023-3	CUMBERLAND	38	21
* FAI 70 & FAS 1707		CONTRACT NO. 74869		
ILLINOIS FED. AID PROJECT				

N 2400 EAST ROAD  
 POT Sta. 50+00



PLAN SHEET LEGEND	
SINGLE TREE REMOVAL	X
AREA OF TREE REMOVAL	X ——— X
AREA OF DEAD TREES TO REMAIN IN PLACE	(X) ——— (X)
PROTECTIVE AREA NO TREE REMOVAL ALLOWED	



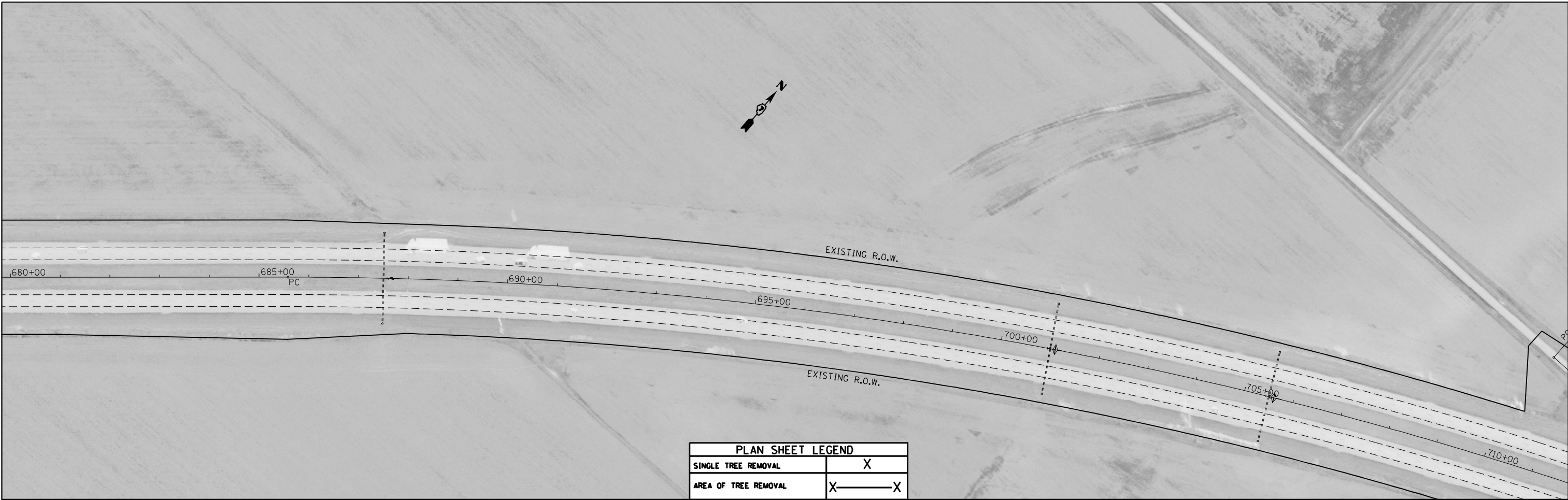
MODEL: Default  
 FILE: \\naulpc01\public\aw\_bentley.com\PIV\DOT\Documents\DOT Office\Director\_7\Project\74869\CADD\Drawings\CAD\Sheet\74869-shp1-1.dwg


USER NAME = Mona.Steffen	DESIGNED -	REVISED -
	DRAWN -	REVISED -
PLOT SCALE = 200,0000 ' / in.	CHECKED -	REVISED -
PLOT DATE = 10/25/2022	DATE -	REVISED -

**STATE OF ILLINOIS  
 DEPARTMENT OF TRANSPORTATION**

TREE LOCATION FAI ROUTE 70 PLAN SHEETS			
SCALE:	SHEET	OF	SHEETS
	STA. 620+00		TO STA. 680+00

F.A.* RTE.	SECTION	COUNTY	TOTAL SHEETS	SHEET NO.
*	D7 TREE REMOVAL 2023-3	CUMBERLAND	38	22
* FAI 70 & FAS 1707		CONTRACT NO. 74B69		
ILLINOIS FED. AID PROJECT				



PLAN SHEET LEGEND	
SINGLE TREE REMOVAL	X
AREA OF TREE REMOVAL	X ——— X
AREA OF DEAD TREES TO REMAIN IN PLACE	(X) ——— (X)
PROTECTIVE AREA NO TREE REMOVAL ALLOWED	



MODEL: Default  
 FILE: \\mame-pw\subject-pw\ben\fy.com\PIV\DOT\Documents\DOT Office\Dir\rdt 7\Project\74869\CADD\Drawings\74869-Plan.dwg

USER NAME = Mona.Steffen	DESIGNED -	REVISED -
	DRAWN -	REVISED -
PLOT SCALE = 200,0000' / in.	CHECKED -	REVISED -
PLOT DATE = 10/25/2022	DATE -	REVISED -

**STATE OF ILLINOIS  
DEPARTMENT OF TRANSPORTATION**

TREE LOCATION FAI ROUTE 70 PLAN SHEETS			
SCALE:	SHEET	OF	SHEETS
	STA. 680+00	TO	STA. 710+00

F.A.* RTE.	SECTION	COUNTY	TOTAL SHEETS	SHEET NO.
*	D7 TREE REMOVAL 2023-3	CUMBERLAND	38	23
* FAI 70 & FAS 1707		CONTRACT NO. 74869		
ILLINOIS FED. AID PROJECT				



PLAN SHEET LEGEND	
SINGLE TREE REMOVAL	X
AREA OF TREE REMOVAL	X---X
DEAD TREE TO REMAIN IN PLACE	⊗
AREA OF DEAD TREES TO REMAIN IN PLACE	⊗---⊗

MODEL: Default  
 FILE: \\mdepc-pw-bentley.com\P\DOT\Documents\DOT Office\Director\Projects\74869\CADD\Drawings\CAD\Drawings\74869-sh-14n.dwg

USER NAME = Mona.Steffen	DESIGNED -	REVISED -
	DRAWN -	REVISED -
PLOT SCALE = 200,0000' / in.	CHECKED -	REVISED -
PLOT DATE = 10/25/2022	DATE -	REVISED -

**STATE OF ILLINOIS**  
**DEPARTMENT OF TRANSPORTATION**

<b>TREE LOCATION</b>				
<b>PLAN SHEETS - US ROUTE 40</b>				
SCALE:	SHEET	OF	SHEETS	STA. TO STA.

F.A.* RTE.	SECTION	COUNTY	TOTAL SHEETS	SHEET NO.
*	D7 TREE REMOVAL 2023-3	CUMBERLAND	38	24
* FAI 70 & FAS 1707		CONTRACT NO. 74869		
ILLINOIS		FED. AID PROJECT		

800 EAST  
 STA. 238+35



PLAN SHEET LEGEND	
SINGLE TREE REMOVAL	X
AREA OF TREE REMOVAL	X — X
DEAD TREE TO REMAIN IN PLACE	(X)
AREA OF DEAD TREES TO REMAIN IN PLACE	(X) — (X)

WOODBURY LAKE

MODEL: Default  
 FILE: \\maltc-pw-illust-cw-beadfw.com\P\INDOT\Documents\IDOT Office\District 7\Projects\74869\CADD\DATA\CAD\Sheet\74869-shp-14n.dwg

USER NAME = Mona.Steffen	DESIGNED -	REVISED -
	DRAWN -	REVISED -
PLOT SCALE = 200,000' / in.	CHECKED -	REVISED -
PLOT DATE = 10/25/2022	DATE -	REVISED -

**STATE OF ILLINOIS  
DEPARTMENT OF TRANSPORTATION**

**TREE LOCATION  
PLAN SHEETS - US ROUTE 40**

SCALE: SHEET OF SHEETS STA. TO STA.

F.A.* RTE.	SECTION	COUNTY	TOTAL SHEETS	SHEET NO.
* D7 TREE REMOVAL 2023-3		CUMBERLAND	38	25
* FAI 70 & FAS 1707		CONTRACT NO. 74869		
ILLINOIS FED. AID PROJECT				



PLAN SHEET LEGEND	
SINGLE TREE REMOVAL	X
AREA OF TREE REMOVAL	X ——— X
DEAD TREE TO REMAIN IN PLACE	(X)
AREA OF DEAD TREES TO REMAIN IN PLACE	(X) ——— (X)



MODEL: Default  
 FILE: \\MAILSrv01\subject-cw-beckley.com\FW\DOT\Documents\1\DOT Office\District 7\Projects\74869\CADD\Drawings\74869-SP-PLAN.dwg

USER NAME = Mona.Steffen	DESIGNED -	REVISED -
	DRAWN -	REVISED -
PLOT SCALE = 200,0000' / in.	CHECKED -	REVISED -
PLOT DATE = 10/25/2022	DATE -	REVISED -

**STATE OF ILLINOIS**  
**DEPARTMENT OF TRANSPORTATION**

TREE LOCATION				
PLAN SHEETS - US ROUTE 40				
SCALE:	SHEET	OF	SHEETS	STA. TO STA.

F.A.* RTE.	SECTION	COUNTY	TOTAL SHEETS	SHEET NO.
*	D7 TREE REMOVAL 2023-3	CUMBERLAND	38	26
* FAI 70 & FAS 1707			CONTRACT NO. 74869	
ILLINOIS FED. AID PROJECT				



PLAN SHEET LEGEND	
SINGLE TREE REMOVAL	X
AREA OF TREE REMOVAL	X ——— X
DEAD TREE TO REMAIN IN PLACE	(X)
AREA OF DEAD TREES TO REMAIN IN PLACE	(X) ——— (X)

MODEL: Default  
 FILE: \\MAILSrv\subject-caw-bee\caw.com\PI\INDOT\Documents\INDOT\Office\Dir\rdet\_7\Project\1748669\CADD\Drawings\CAD\Sheet\1748669-sh-14n.dwg

USER NAME = Mona.Steffen	DESIGNED -	REVISED -
	DRAWN -	REVISED -
PLOT SCALE = 200,0000' / in.	CHECKED -	REVISED -
PLOT DATE = 10/25/2022	DATE -	REVISED -

**STATE OF ILLINOIS**  
**DEPARTMENT OF TRANSPORTATION**

<b>TREE LOCATION</b>			
<b>PLAN SHEETS - US ROUTE 40</b>			
SCALE:	SHEET	OF SHEETS	STA. TO STA.

F.A.* RTE.	SECTION	COUNTY	TOTAL SHEETS	SHEET NO.
*	D7 TREE REMOVAL 2023-3	CUMBERLAND	38	27
* FAI 70 & FAS 1707		CONTRACT NO. 74B69		
ILLINOIS FED. AID PROJECT				



PLAN SHEET LEGEND	
SINGLE TREE REMOVAL	X
AREA OF TREE REMOVAL	X ——— X
DEAD TREE TO REMAIN IN PLACE	(X)
AREA OF DEAD TREES TO REMAIN IN PLACE	(X) ——— (X)

MODEL: Default  
 FILE: \\mdepc-pw-backend.com\P\IN\DOT\Documents\1\DOT Office\Dir\rdt\_7\Project\74869\CADD\DATA\CAD\Sheets\74869-sh-41n.dgn

USER NAME = Mona.Steffen	DESIGNED -	REVISED -
	DRAWN -	REVISED -
PLOT SCALE = 200,0000' / in.	CHECKED -	REVISED -
PLOT DATE = 10/25/2022	DATE -	REVISED -

**STATE OF ILLINOIS**  
**DEPARTMENT OF TRANSPORTATION**

**TREE LOCATION**  
**PLAN SHEETS - US ROUTE 40**

F.A.* RTE.	SECTION	COUNTY	TOTAL SHEETS	SHEET NO.
*	D7 TREE REMOVAL 2023-3	CUMBERLAND	38	28
* FAI 70 & FAS 1707		CONTRACT NO. 74869		
ILLINOIS		FED. AID PROJECT		

SCALE: SHEET OF SHEETS STA. TO STA.

PLAN SHEET LEGEND	
SINGLE TREE REMOVAL	X
AREA OF TREE REMOVAL	X — X
DEAD TREE TO REMAIN IN PLACE	⊗
AREA OF DEAD TREES TO REMAIN IN PLACE	⊗ — ⊗

MODEL: Default  
 FILE: \\MAILSrv01\subject-cw-beckley.com\PI\DOT\Documents\DOT Office\Director\Projects\74869\CADD\data\CAD\sheet\74869-sh-14n.dgn

USER NAME = Mona.Steffen	DESIGNED -	REVISED -
PLOT SCALE = 200,0000' / in.	DRAWN -	REVISED -
PLOT DATE = 10/25/2022	CHECKED -	REVISED -
	DATE -	REVISED -

**STATE OF ILLINOIS**  
**DEPARTMENT OF TRANSPORTATION**

**TREE LOCATION**  
**PLAN SHEETS - US ROUTE 40**

F.A.* RTE.	SECTION	COUNTY	TOTAL SHEETS	SHEET NO.
*	D7 TREE REMOVAL 2023-3	CUMBERLAND	38	29
* FAI 70 & FAS 1707		CONTRACT NO. 74B69		
ILLINOIS FED. AID PROJECT				

SCALE: SHEET OF SHEETS STA. TO STA.



PLAN SHEET LEGEND	
SINGLE TREE REMOVAL	X
AREA OF TREE REMOVAL	X ——— X
DEAD TREE TO REMAIN IN PLACE	(X)
AREA OF DEAD TREES TO REMAIN IN PLACE	(X) ——— (X)

MODEL: Default  
 FILE: \\MAILSrv01\pub\scaw\_bentley.com\PIV\DOT\Documents\DOT Office\Director 2\Projects\748669\CADD\Drawings\CAD\Drawings\748669-she-14n.dwg

1400 EAST/CUMBERLAND ROAD  
 653+92

USER NAME = Mona.Steffen	DESIGNED -	REVISED -
	DRAWN -	REVISED -
PLOT SCALE = 200,0000' / in.	CHECKED -	REVISED -
PLOT DATE = 10/25/2022	DATE -	REVISED -

**STATE OF ILLINOIS**  
**DEPARTMENT OF TRANSPORTATION**

<b>TREE LOCATION</b>			
<b>PLAN SHEETS - US ROUTE 40</b>			
SCALE:	SHEET	OF	SHEETS
	STA.		TO STA.

F.A.* RTE.	SECTION	COUNTY	TOTAL SHEETS	SHEET NO.
*	D7 TREE REMOVAL 2023-3	CUMBERLAND	38	30
* FAI 70 & FAS 1707		CONTRACT NO. 74869		
ILLINOIS		FED. AID PROJECT		



PLAN SHEET LEGEND	
SINGLE TREE REMOVAL	X
AREA OF TREE REMOVAL	X ——— X
DEAD TREE TO REMAIN IN PLACE	⊗
AREA OF DEAD TREES TO REMAIN IN PLACE	⊗ ——— ⊗

MODEL: Default  
 FILE: \\MAILSrv\pub\subject-pw-beckley.com\PIV\DOT\Documents\DOT Office\Dir\Dir\Dir\Projects\74869\CADD\data\CAD\sheet\74869-sh-14n.dwg

USER NAME = Mona.Steffen	DESIGNED -	REVISED -
	DRAWN -	REVISED -
PLOT SCALE = 200,0000' / in.	CHECKED -	REVISED -
PLOT DATE = 10/25/2022	DATE -	REVISED -

**STATE OF ILLINOIS  
 DEPARTMENT OF TRANSPORTATION**

TREE LOCATION			
PLAN SHEETS - US ROUTE 40			
SCALE:	SHEET	OF SHEETS	STA. TO STA.

F.A.* RTE.	SECTION	COUNTY	TOTAL SHEETS	SHEET NO.
*	D7 TREE REMOVAL 2023-3	CUMBERLAND	38	31
* FAI 70 & FAS 1707		CONTRACT NO. 74869		
ILLINOIS FED. AID PROJECT				

MODEL: Default  
 FILE: \\maltz\p\subject-caw-beckley.com\PIV\DOT\Documents\1\DOT Office\Dir\dir1\Projects\748669\CADD\data\CAD\sheet\748669-sh1.dwg



PLAN SHEET LEGEND	
SINGLE TREE REMOVAL	X
AREA OF TREE REMOVAL	X———X
DEAD TREE TO REMAIN IN PLACE	(X)
AREA OF DEAD TREES TO REMAIN IN PLACE	(X)———(X)

USER NAME = Mona.Steffen	DESIGNED -	REVISED -
	DRAWN -	REVISED -
PLOT SCALE = 200,0000' / in.	CHECKED -	REVISED -
PLOT DATE = 10/25/2022	DATE -	REVISED -

**STATE OF ILLINOIS**  
**DEPARTMENT OF TRANSPORTATION**

TREE LOCATION				
PLAN SHEETS - US ROUTE 40				
SCALE:	SHEET	OF	SHEETS	STA. TO STA.

F.A.* RTE.	SECTION	COUNTY	TOTAL SHEETS	SHEET NO.
*	D7 TREE REMOVAL 2023-3	CUMBERLAND	38	32
* FAI 70 & FAS 1707			CONTRACT NO. 748669	
ILLINOIS FED. AID PROJECT				





PLAN SHEET LEGEND	
SINGLE TREE REMOVAL	X
AREA OF TREE REMOVAL	X ——— X
DEAD TREE TO REMAIN IN PLACE	⊗
AREA OF DEAD TREES TO REMAIN IN PLACE	⊗ ——— ⊗

MODEL: Default  
 FILE: \\nautilus-pw-backend.com\PW\DOT\Documents\DOT Office\Director\_7\Projects\74869\CADD\Drawings\74869-SP-PLAN.dwg

USER NAME = Mona.Steffen	DESIGNED -	REVISED -
	DRAWN -	REVISED -
PLOT SCALE = 200,000' / in.	CHECKED -	REVISED -
PLOT DATE = 10/25/2022	DATE -	REVISED -

**STATE OF ILLINOIS**  
**DEPARTMENT OF TRANSPORTATION**

**TREE LOCATION**  
**PLAN SHEETS - US ROUTE 40**

SCALE: SHEET OF SHEETS STA. TO STA.

F.A.* RTE.	SECTION	COUNTY	TOTAL SHEETS	SHEET NO.
* D7	TREE REMOVAL 2023-3	CUMBERLAND	38	33
* FAI 70 & FAS 1707		CONTRACT NO. 74869		
ILLINOIS FED. AID PROJECT				



PLAN SHEET LEGEND	
SINGLE TREE REMOVAL	X
AREA OF TREE REMOVAL	X ——— X
DEAD TREE TO REMAIN IN PLACE	(X)
AREA OF DEAD TREES TO REMAIN IN PLACE	(X) ——— (X)



MODEL: Default  
 FILE: \\nautilus.pw.usdnet-cw.bea.fwy.com\P\W\DOT\Documents\1\DOT Office\District 7\Projects\74869\CADD\Drawings\DOT\74869-sh-14n.dwg

USER NAME = Mona.Steffen	DESIGNED -	REVISED -
	DRAWN -	REVISED -
PLOT SCALE = 200,0000' / in.	CHECKED -	REVISED -
PLOT DATE = 10/25/2022	DATE -	REVISED -

**STATE OF ILLINOIS**  
**DEPARTMENT OF TRANSPORTATION**

TREE LOCATION			
PLAN SHEETS - US ROUTE 40			
SCALE:	SHEET	OF	SHEETS
			STA. 140+00 TO STA. 200+00

F.A.* RTE.	SECTION	COUNTY	TOTAL SHEETS	SHEET NO.
*	D7 TREE REMOVAL 2023-3	CUMBERLAND	38	34
* FAI 70 & FAS 1707		CONTRACT NO. 74B69		
		ILLINOIS	FED. AID PROJECT	



PLAN SHEET LEGEND	
SINGLE TREE REMOVAL	X
AREA OF TREE REMOVAL	X ——— X
DEAD TREE TO REMAIN IN PLACE	(X)
AREA OF DEAD TREES TO REMAIN IN PLACE	(X) ——— (X)

MODEL: Default  
 FILE: \\na16f62.pva\subject-caw-beadefw.com\FW\DOT\Documents\DOT Office\Dir\rdet\_7\Projects\748669\CADD\Drawings\CAD\Drawings\748669-shd-pln.dgn

USER NAME = Mona.Steffen	DESIGNED -	REVISED -
	DRAWN -	REVISED -
PLOT SCALE = 200,0000' / in.	CHECKED -	REVISED -
PLOT DATE = 10/25/2022	DATE -	REVISED -

**STATE OF ILLINOIS**  
**DEPARTMENT OF TRANSPORTATION**

**TREE LOCATION**  
**PLAN SHEETS - US ROUTE 40**

SCALE: SHEET OF SHEETS STA. 140+00 TO STA. 200+00

F.A.* RTE.	SECTION	COUNTY	TOTAL SHEETS	SHEET NO.
*	D7 TREE REMOVAL 2023-3	CUMBERLAND	38	35
* FAI 70 & FAS 1707		CONTRACT NO. 748669		
ILLINOIS FED. AID PROJECT				



PLAN SHEET LEGEND	
SINGLE TREE REMOVAL	X
AREA OF TREE REMOVAL	X — X
DEAD TREE TO REMAIN IN PLACE	(X)
AREA OF DEAD TREES TO REMAIN IN PLACE	(X) — (X)

MODEL: Default  
 FILE: \\mdepc-pw-bentley.com\P\INDOT\Documents\DOT Office\Dir\rdet\_7\Projects\74869\CADD\Drawings\74869-std-pln.dgn

USER NAME = Mona.Steffen	DESIGNED -	REVISED -
	DRAWN -	REVISED -
PLOT SCALE = 200,000' / in.	CHECKED -	REVISED -
PLOT DATE = 10/25/2022	DATE -	REVISED -

**STATE OF ILLINOIS  
 DEPARTMENT OF TRANSPORTATION**

**TREE LOCATION  
 PLAN SHEETS - US ROUTE 40**

SCALE: SHEET OF SHEETS STA. 140+00 TO STA. 200+00

F.A.* RTE.	SECTION	COUNTY	TOTAL SHEETS	SHEET NO.
*	D7 TREE REMOVAL 2023-3	CUMBERLAND	38	36
* FAI 70 & FAS 1707		CONTRACT NO. 74B69		
ILLINOIS FED. AID PROJECT				

PLAN SHEET LEGEND	
SINGLE TREE REMOVAL	X
AREA OF TREE REMOVAL	X ——— X
DEAD TREE TO REMAIN IN PLACE	(X)
AREA OF DEAD TREES TO REMAIN IN PLACE	(X) ——— (X)

MODEL: Default  
 FILE: \\maltz\p\project-caw-bee\p\work\DOT Documents\DOT Office\Dir\Dir\7\Project\748669\CADD\data\CADD\sheet\748669-sh-14n.dwg

USER NAME = Mona.Steffen	DESIGNED -	REVISED -
	DRAWN -	REVISED -
PLOT SCALE = 200,0000' / in.	CHECKED -	REVISED -
PLOT DATE = 10/25/2022	DATE -	REVISED -

**STATE OF ILLINOIS**  
**DEPARTMENT OF TRANSPORTATION**

**TREE LOCATION**  
**PLAN SHEETS - US ROUTE 40**

SCALE: SHEET OF SHEETS STA. 140+00 TO STA. 200+00

F.A.* RTE.	SECTION	COUNTY	TOTAL SHEETS	SHEET NO.
*	D7 TREE REMOVAL 2023-3	CUMBERLAND	38	37
* FAI 70 & FAS 1707		CONTRACT NO. 74B69		
ILLINOIS FED. AID PROJECT				



PLAN SHEET LEGEND	
SINGLE TREE REMOVAL	X
AREA OF TREE REMOVAL	X — X
DEAD TREE TO REMAIN IN PLACE	(X)
AREA OF DEAD TREES TO REMAIN IN PLACE	(X) — (X)

MODEL: Default  
 FILE: \\na16120101\paw\_bentley.com\P\INDOT\Documents\1001 Office\Director\_2\Projects\74869\CADD\Drawings\CAD\Drawings\74869-SP-PLAN.dgn

USER NAME = Mona.Steffen	DESIGNED -	REVISED -
	DRAWN -	REVISED -
PLOT SCALE = 200,0000' / in.	CHECKED -	REVISED -
PLOT DATE = 10/25/2022	DATE -	REVISED -

**STATE OF ILLINOIS**  
**DEPARTMENT OF TRANSPORTATION**

**TREE LOCATION**  
**PLAN SHEETS - US ROUTE 40**

SCALE: SHEET OF SHEETS STA. 140+00 TO STA. 200+00

F.A.* RTE.	SECTION	COUNTY	TOTAL SHEETS	SHEET NO.
*	D7 TREE REMOVAL 2023-3	CUMBERLAND	38	38
* FAI 70 & FAS 1707		CONTRACT NO. 74869		
ILLINOIS FED. AID PROJECT				