

3002

INDEX OF SHEETS

SHEET NO.	TITLE SHEET
"	" 2 STD. 2113
"	" 2 STD. 1972 R
"	" 2 STD. 1971 S
"	" 3 PLAN AND PROFILE
"	" 4 CROSS SECTIONS - CHANNEL EXCAVATION
"	" 5 " " " "
"	" 6 BRIDGE PLANS
"	" 7 " "
"	" 8 " "

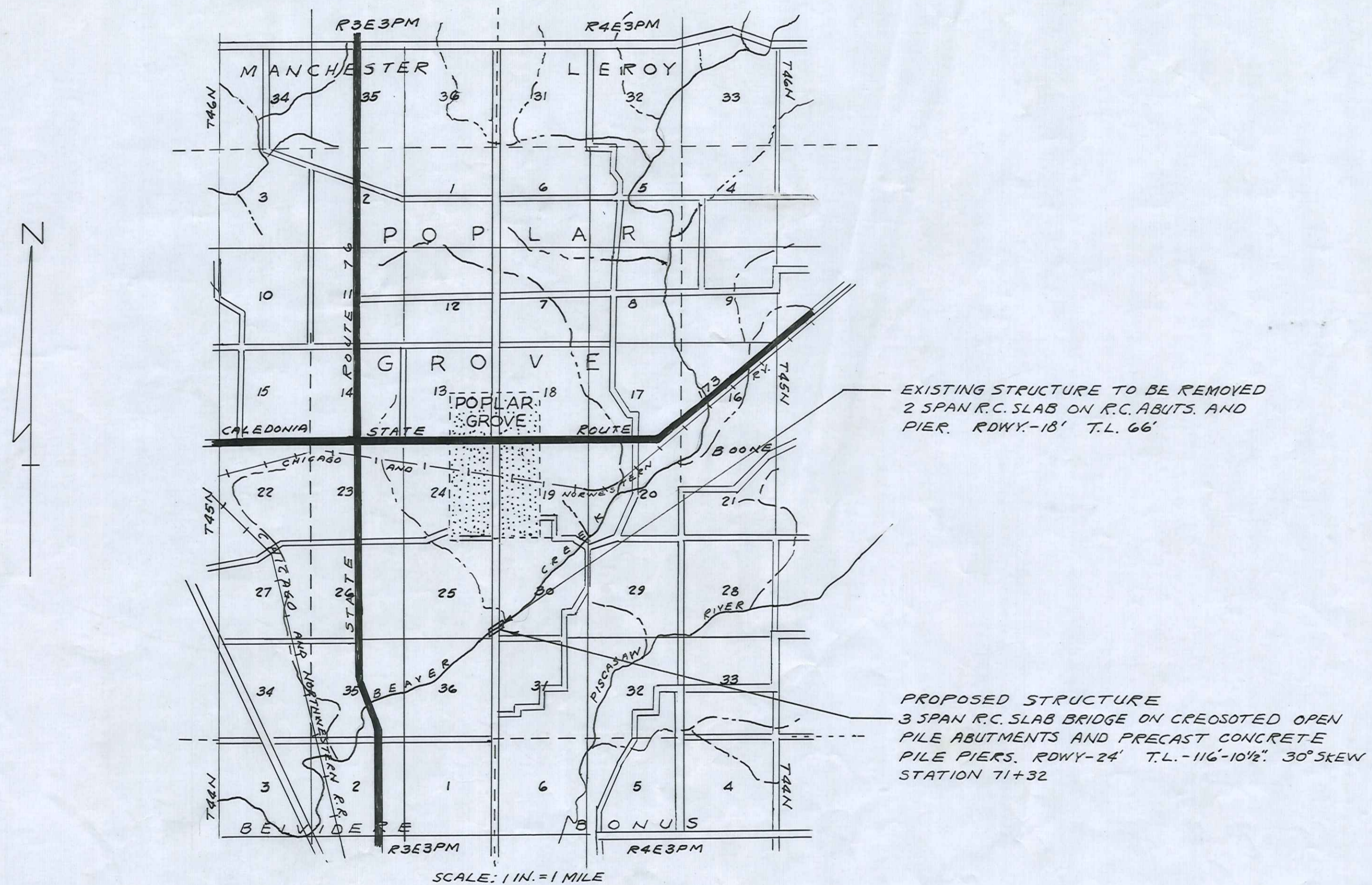
STATE OF ILLINOIS
DEPARTMENT OF PUBLIC WORKS AND BUILDINGS
DIVISION OF HIGHWAYS
**PLANS FOR PROPOSED
FEDERAL-AID SECONDARY PROJECT**

PLAN 1 INCH = 100 FEET
PROFILE HOR. 1 INCH = 100 FEET
PROFILE VERT. 1 INCH = 10 FEET
CROSS SECTIONS 1 INCH = 5 FEET

F.A.S. ROUTE 32 SECTION 30B BOONE COUNTY
PROJECT S-108(3)

SUMMARY OF QUANTITIES

9200	CU. YDS.	CHANNEL EXCAVATION
1742	CU. YDS.	CLASS X CONCRETE
42230	LBS.	REINFORCEMENT BARS
226	LIN. FT.	METAL PLATE BRIDGE RAIL
1	EACH	NAME PLATES
315	LIN. FT.	FURNISHING PRECAST CONCRETE PILES, 16"
315	LIN. FT.	DRIVING PRECAST CONCRETE PILES
189	LIN. FT.	FURNISHING CREOSOTED PILES, 20.1'-38.0'
189	LIN. FT.	DRIVING TIMBER PILES
600	F.B.M.	TREATED TIMBER
1	EACH	TEST PILES (PRECAST CONCRETE)
1	EACH	TEST PILES (CREOSOTED TIMBER)
1	EACH	REMOVAL OF EXISTING STRUCTURES
1	EACH	TEMPORARY BRIDGE COMPLETE



NET LENGTH OF LAYOUT = 116.87 FT. = 0.022 MILES

EXAMINED MAR. 14 1958

M. J. Quinn
ENGINEER OF BRIDGE AND TRAFFIC STRUCTURES

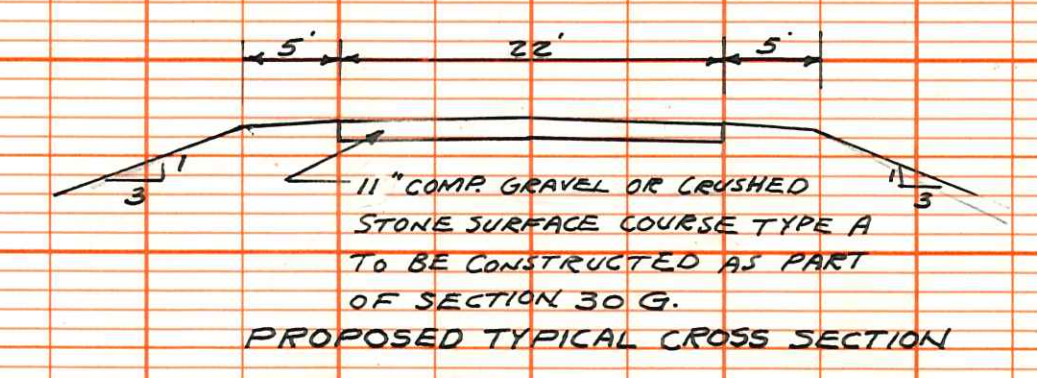
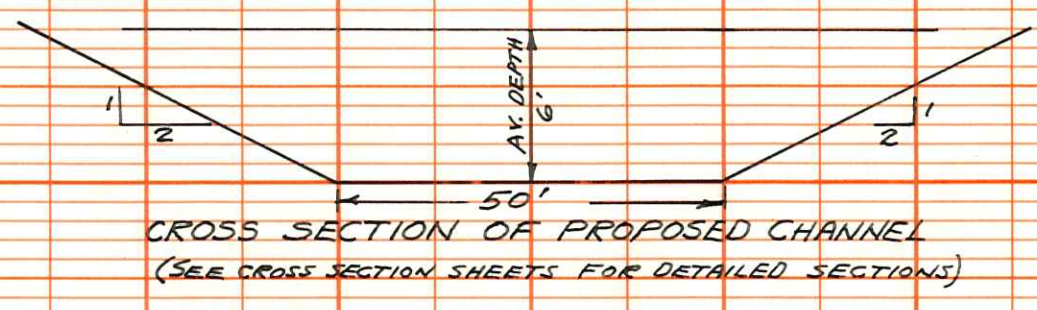
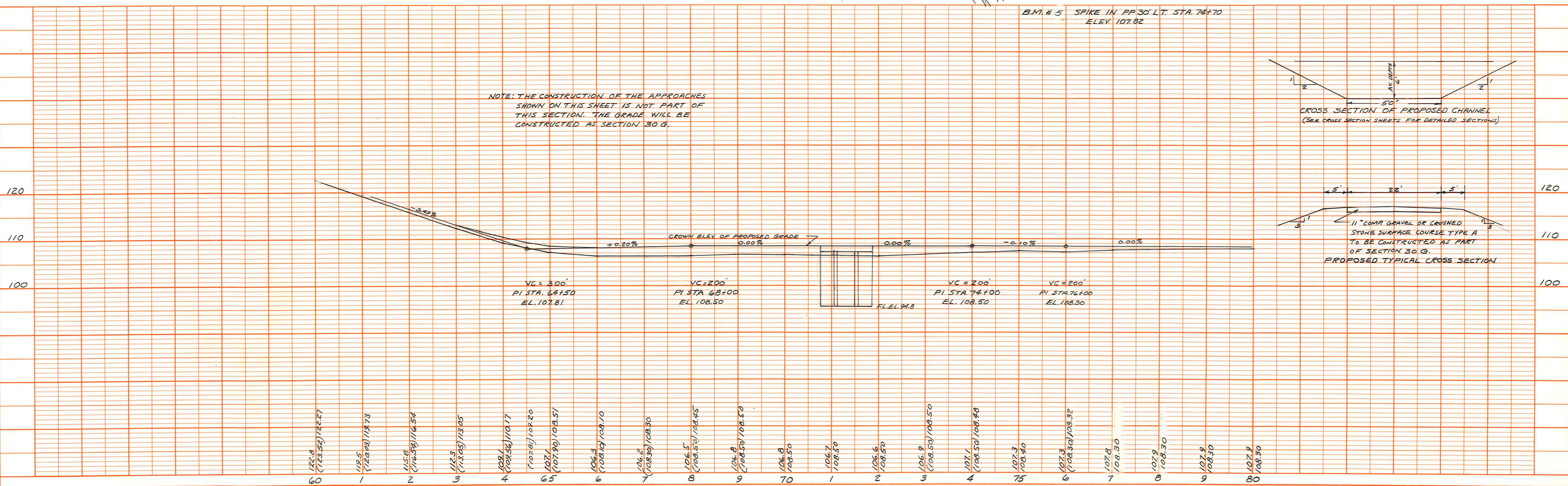
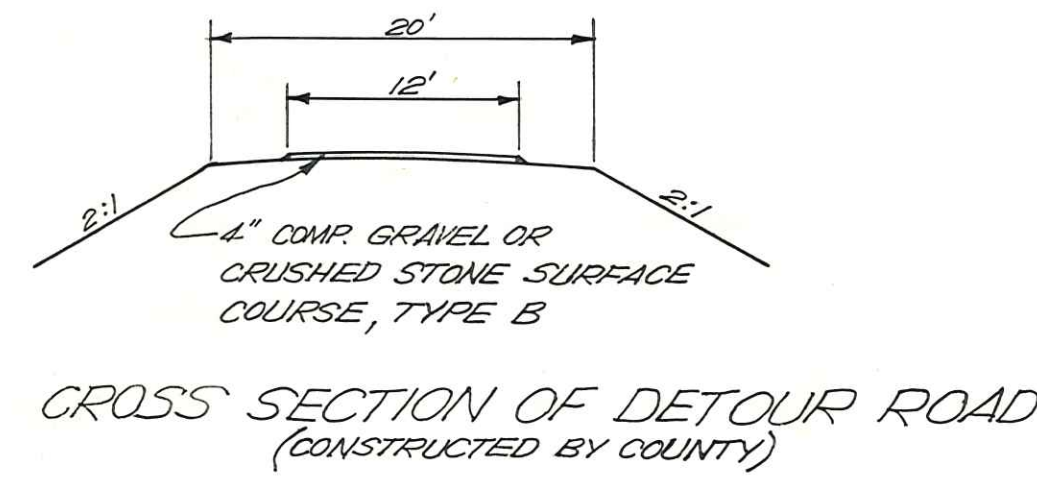
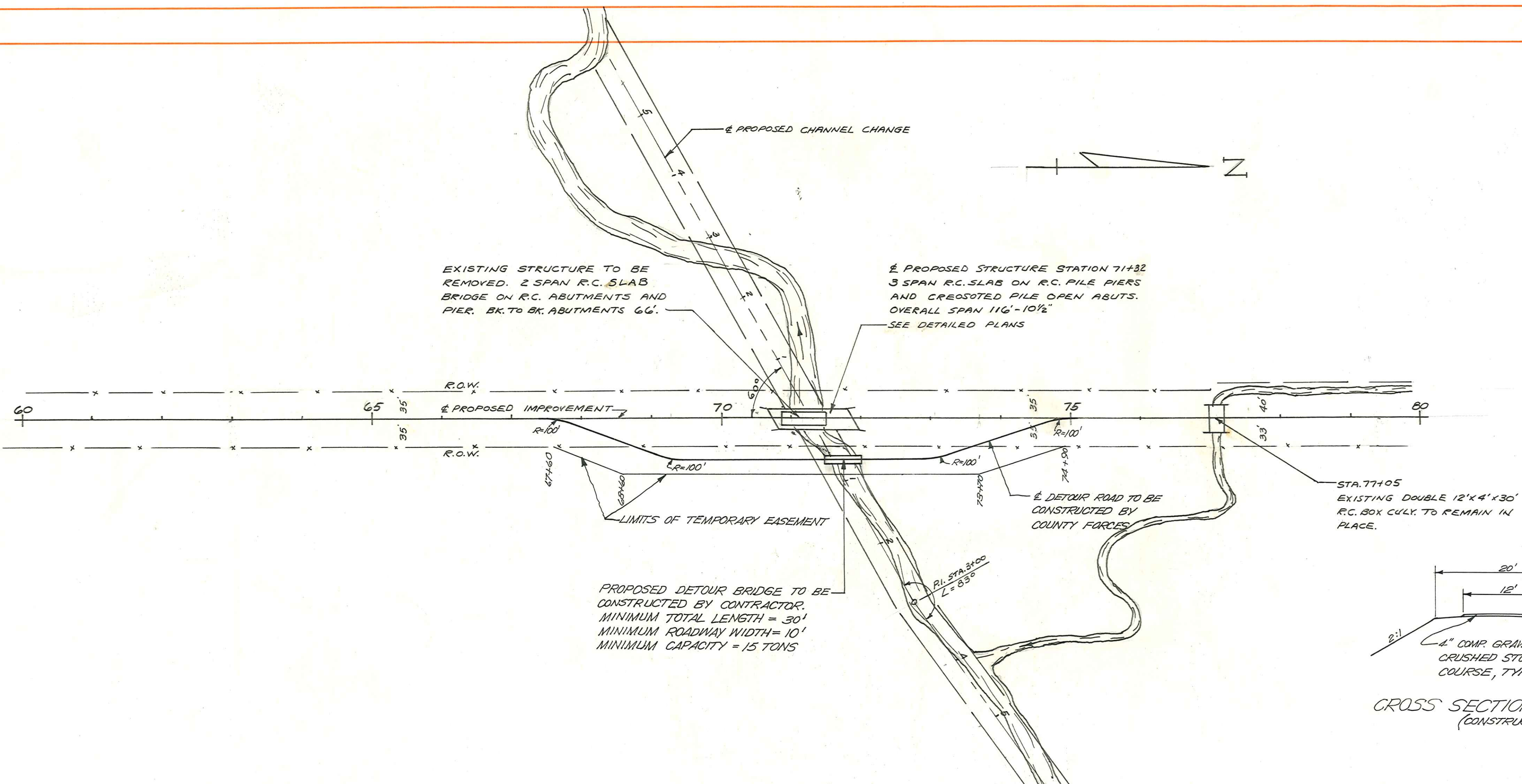
3002

STATE OF ILLINOIS DEPARTMENT OF PUBLIC WORKS AND BUILDINGS DIVISION OF HIGHWAYS	
SUBMITTED	Feb 25 1958
PASSED	3-25 1958
APPROVED	3-25 1958
APPROVED	3-21 1958

R. S. Magowan DISTRICT ENGINEER
Mr. M. S. Suller ENGINEER OF LOCAL ROADS AND STREETS
R. R. Bartolameus CHIEF HIGHWAY ENGINEER
E. Q. Rosenstone DIRECTOR

DATE _____ BY _____
 SURVEYOR'S
 PLAN PLOTTED
 ALIGNMENT CHECKED
 NOTE BOOK NO. _____
 ET. OF WAY CHECKED
 NO. _____

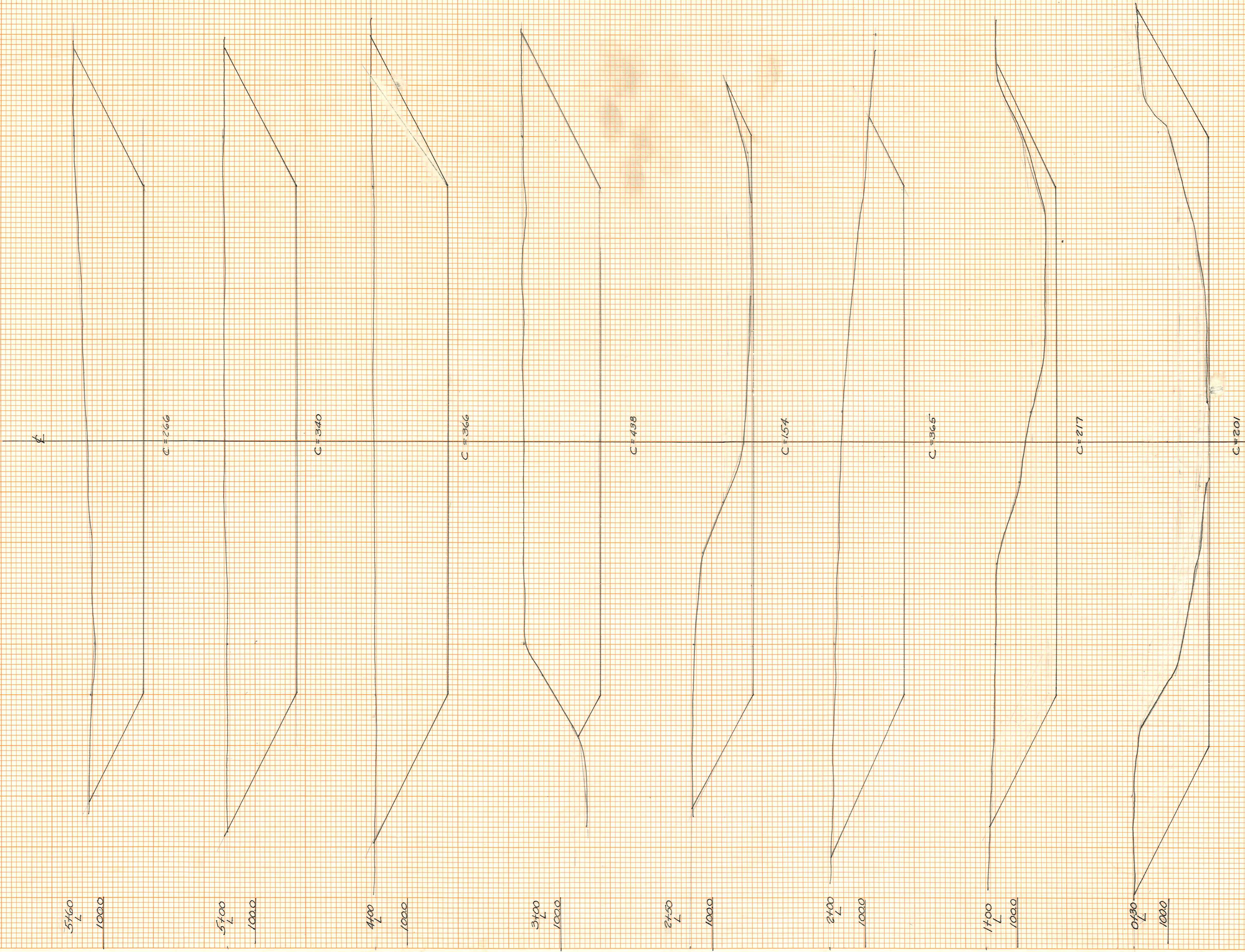
DATE _____ BY _____
 SURVEYOR'S
 PROFILE GRADES CHECKED
 NOTE BOOK NO. _____
 STRUCTURE NOTES CHECKED
 NO. _____



FINAL SURVEY	SURVEYED	BY	DATE
NOTE BOOK	TEMPLATE		
NO.	AREAS	CHECKED	

ORIGINAL SURVEY	SURVEYED	BY	DATE
NOTE BOOK	TEMPLATE		
NO.	AREAS	CHECKED	

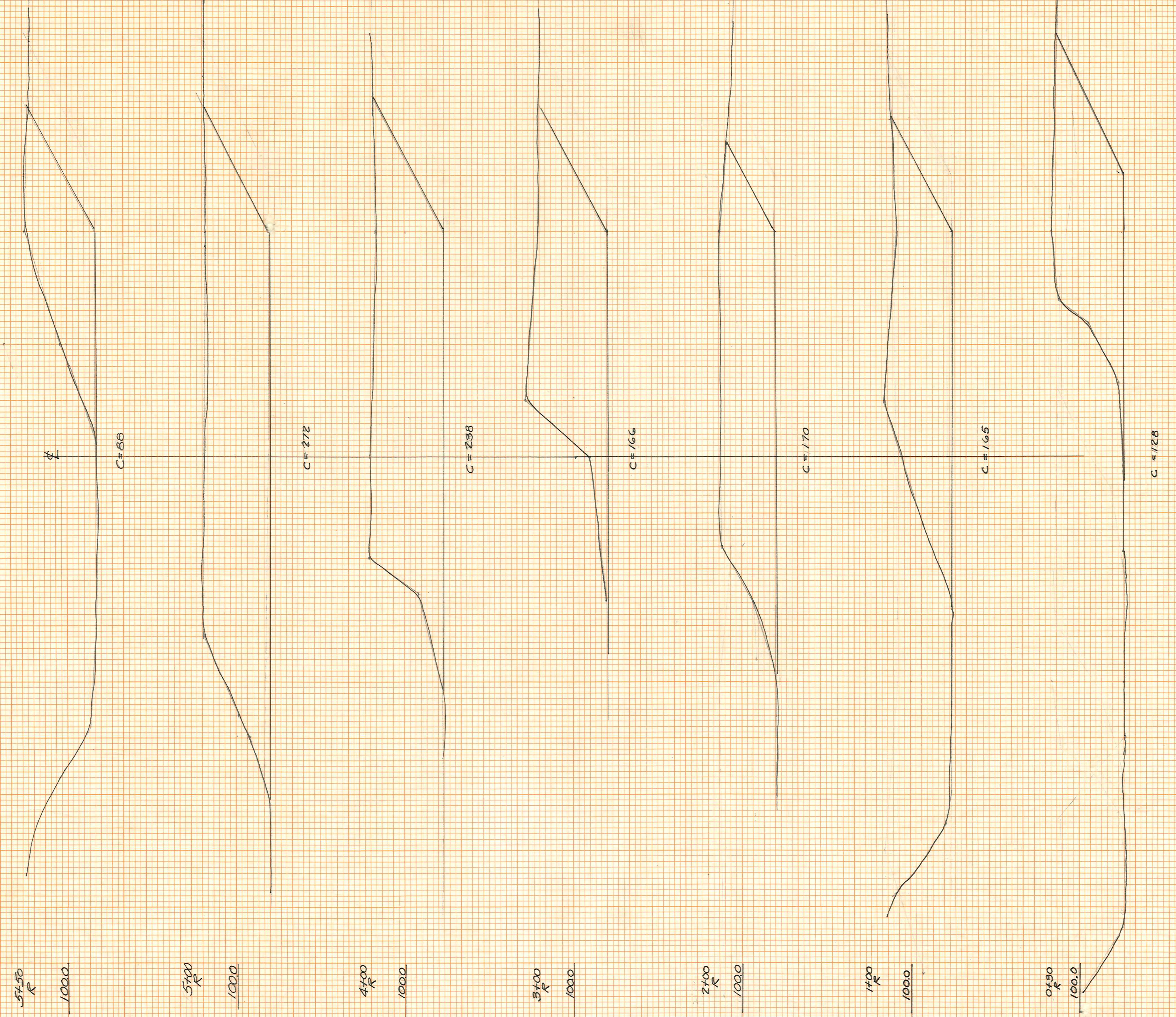
CHANNEL CHANGE
WEST OF BRIDGE



FINAL SURVEY	BY	DATE
NO. _____	_____	_____
NOTE BOOK		
NO. _____		
REVISIONS		
PLOTTED		
TEMPLATE		
AREAS CHECKED		

ORIGINAL SURVEY	BY	DATE
NO. _____	_____	_____
NOTE BOOK		
NO. _____		
REVISIONS		
PLOTTED		
TEMPLATE		
AREAS CHECKED		

CHANNEL CHANGE
EAST OF BRIDGE

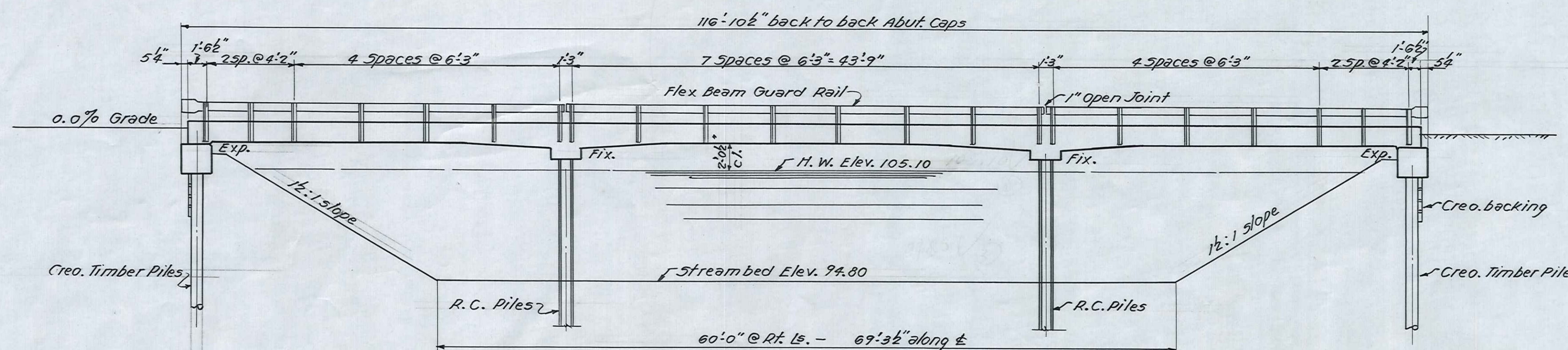


B.M. Spike in R.P. 30' Lt.
Station 74+70 Elev. 107.82

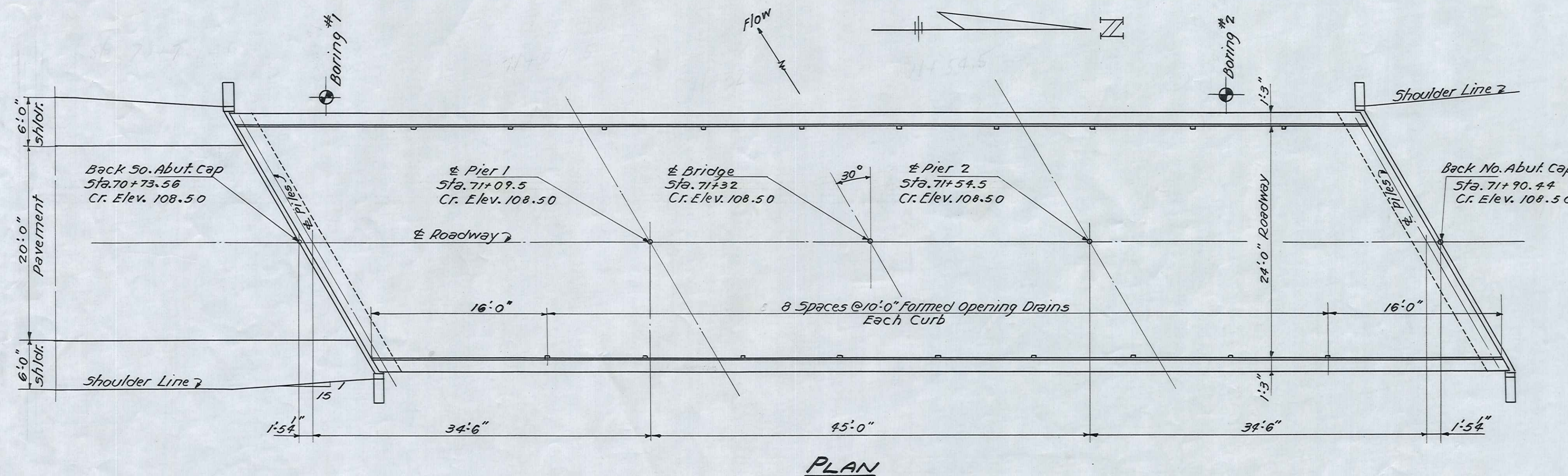
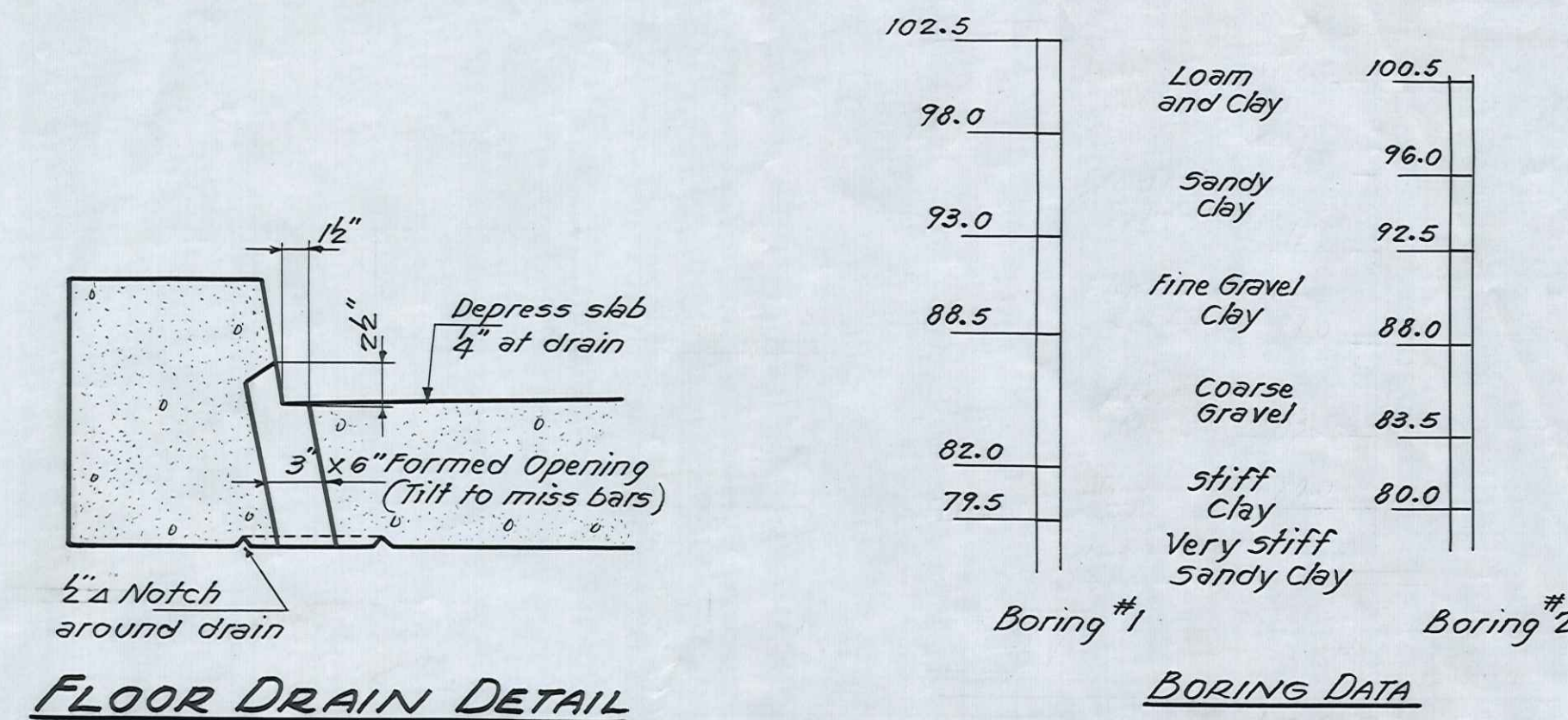
Existing Structure: 2 Span @ 30'
R.C. Slab - 18' Roadway on R.C.
Abutments and Pier to be removed
by Contractor. See Special Provisions.

ROUTE NO.	SEC.	COUNTY	TOTAL SHEETS	SHEET NO.
F.A. 532	30B	BOONE	8	6

FED. ROAD DIST. NO. 7 ILLINOIS S-108 (3)



ELEVATION
Scale: 1/8" = 1'-0"



PLAN

WATERWAY INFORMATION

Drainage Area	3100 Acres
Character	Gentle, Rolling, Cultivated
Required Opening (15 Yr. Flood)	650 Sq. Ft.
Present Opening	525 Sq. Ft.
Proposed Opening	750 Sq. Ft.

GENERAL NOTES

Class-X Concrete shall be used throughout.
Sills, curbs and pier caps shall be poured monolithic and in one continuous operation.
Floor shall be finished in accordance with Art. 51-18(a) of the Standard Specifications.
Timber piles and creosoted timber shall be furnished, installed and paid for in accordance with Sec. 58 of the Standard Specifications for metal plate bridge rail see Special Provisions.
The contractor shall drive one concrete and one timber test pile before ordering remainder of piles.
Test piles shall be driven in permanent locations as directed by the Engineer.

TOTAL BILL OF MATERIAL

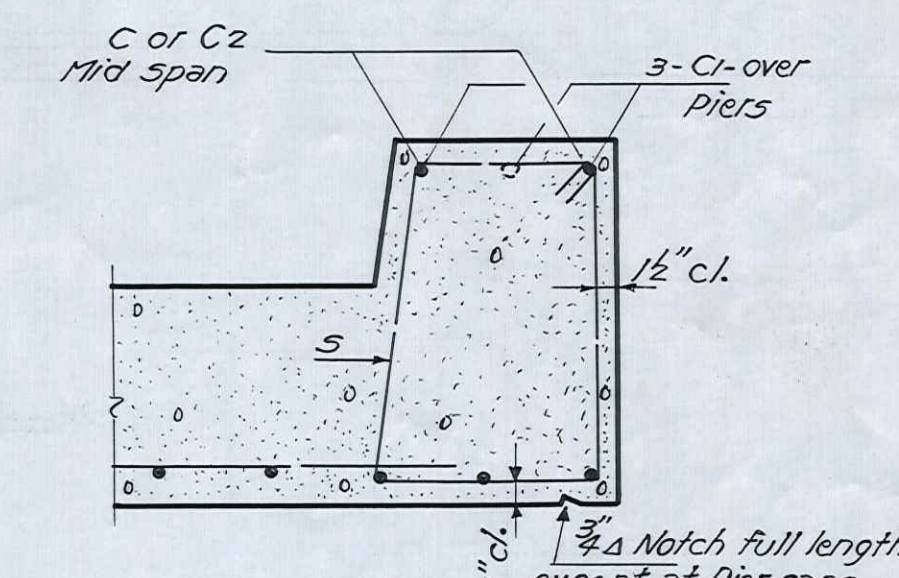
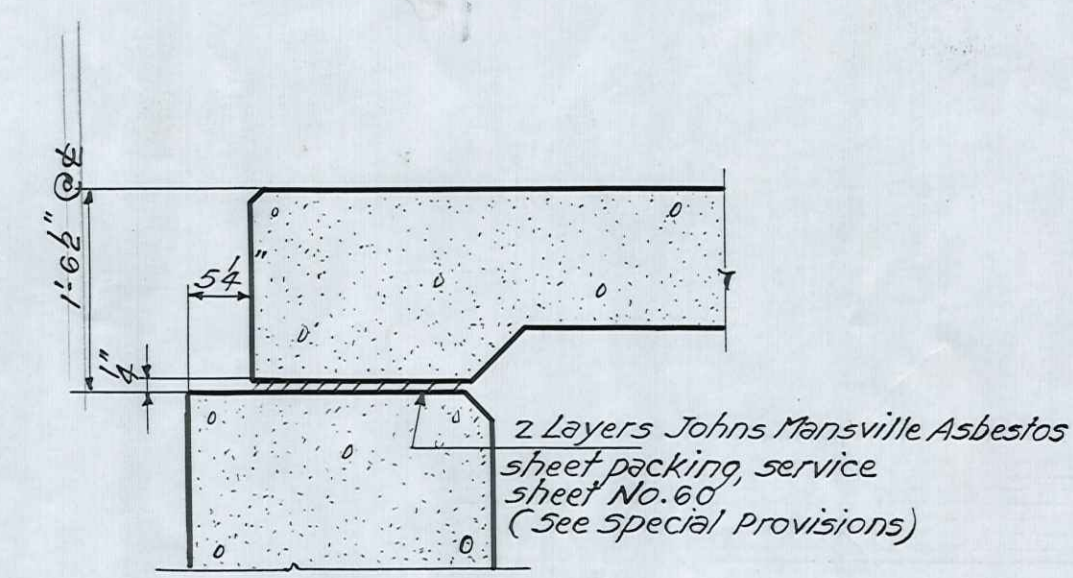
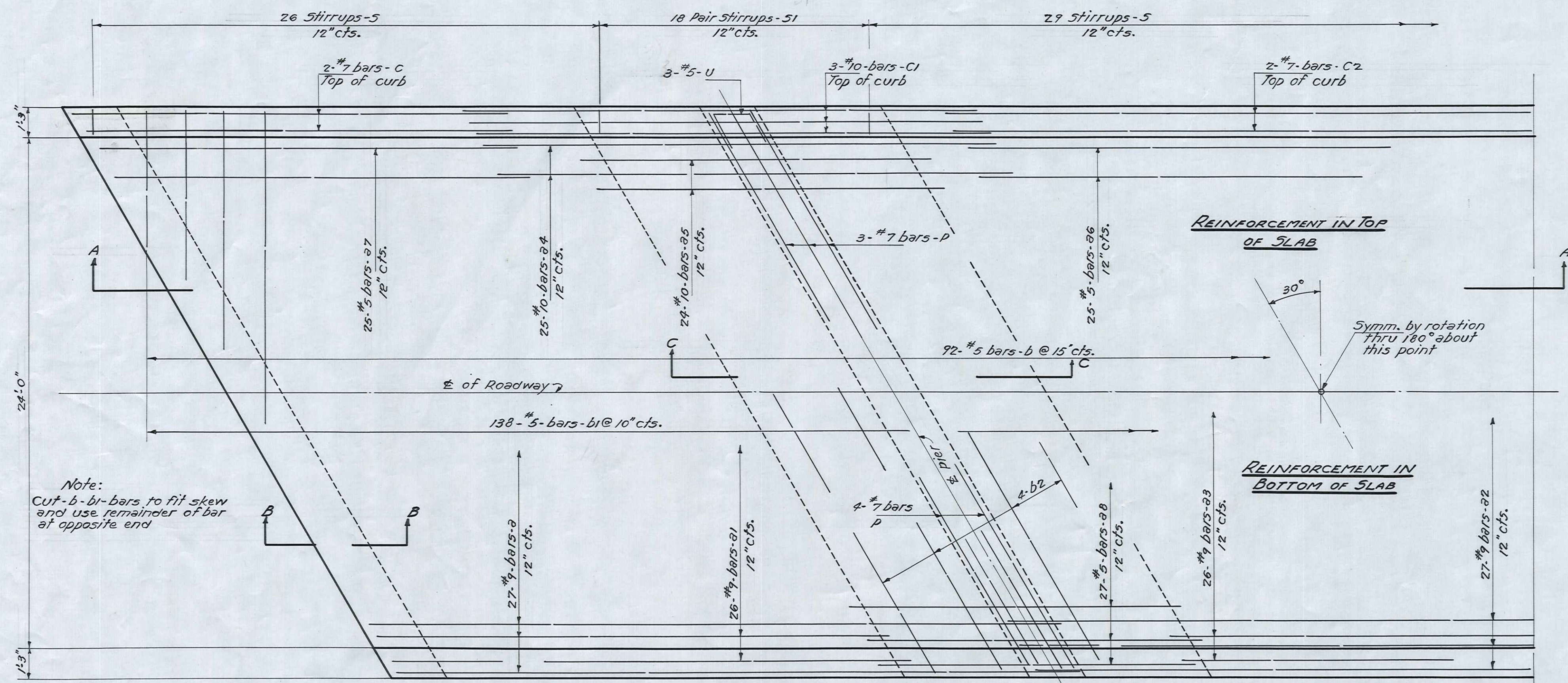
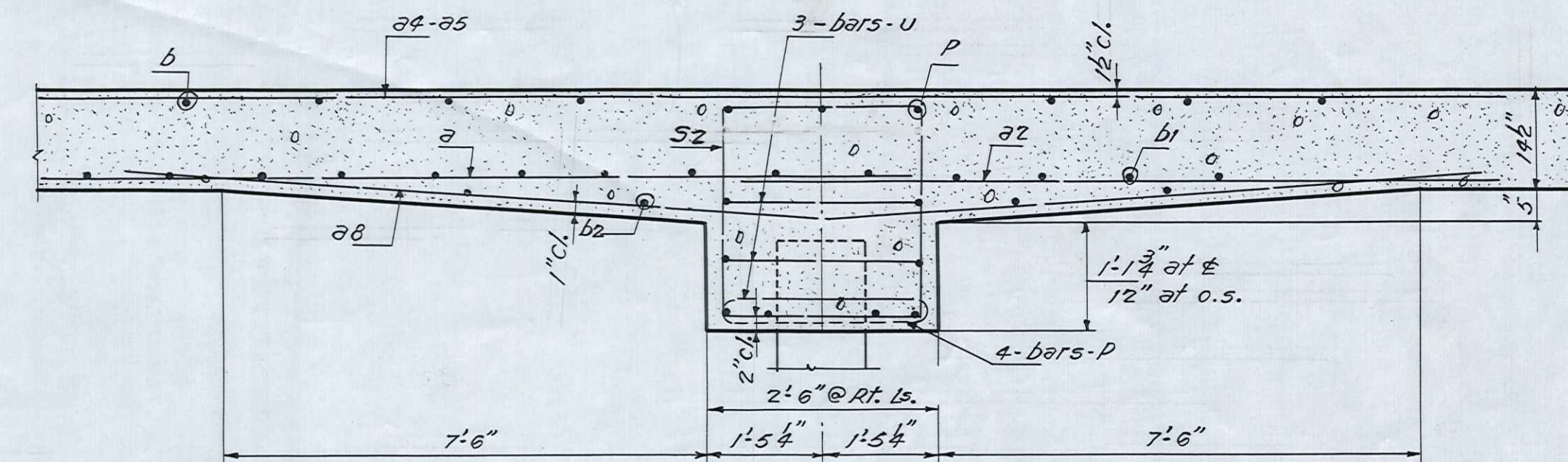
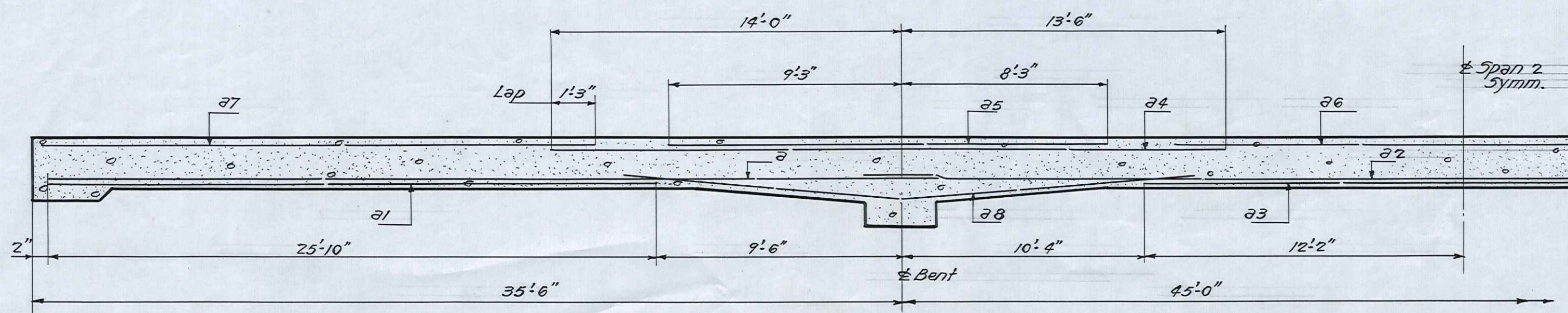
ITEM	UNIT	QUANTITY
Class-X Concrete	Cu. Yds.	174.2
Reinforcement Bars	Lbs.	42230
Metal Plate Bridge Rail	Lin. Ft.	226
Precast Concrete Piles	Lin. Ft.	315
Creosoted Piles	Lin. Ft.	189
Test Piles (Concrete)	Each	1
Test Piles (Creosoted)	Each	1
Treated Timber	F. B. M.	600
Removal of Existing Structures	Each	1
Name Plates	Each	1

BEAVER CREEK
STA. 71+32
BUILT 1958
F.A.S. RT. 32 - SEC. 30B
F.A. PROJ. 5-108(3)
LOADING H15-512

LETTERING FOR NAME PLATE
See Standard 2113

DESIGN STRESSES
f_c - - - - - 1400 #/sq. in.
f_s - - - - - 20000 #/sq. in. Reinf.
n - - - - - 10
Loading H15-512-44

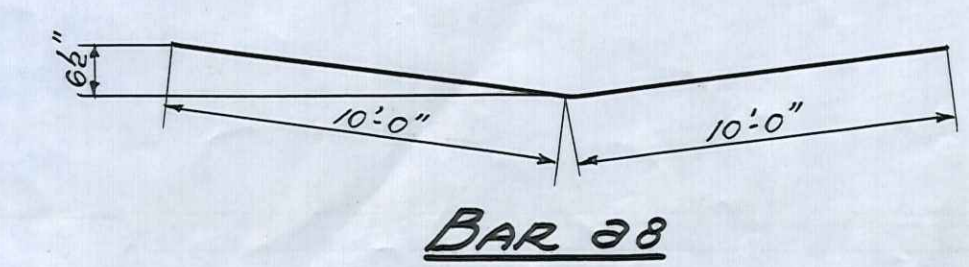
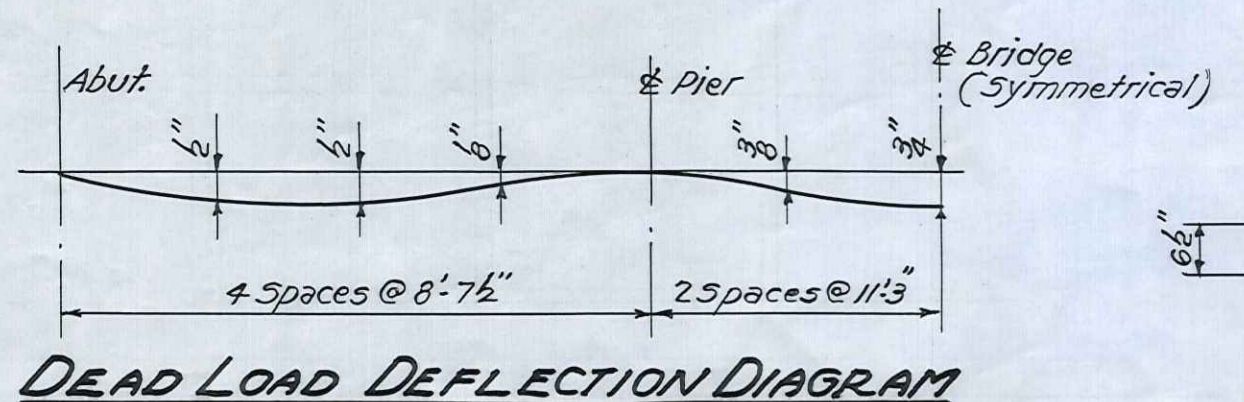
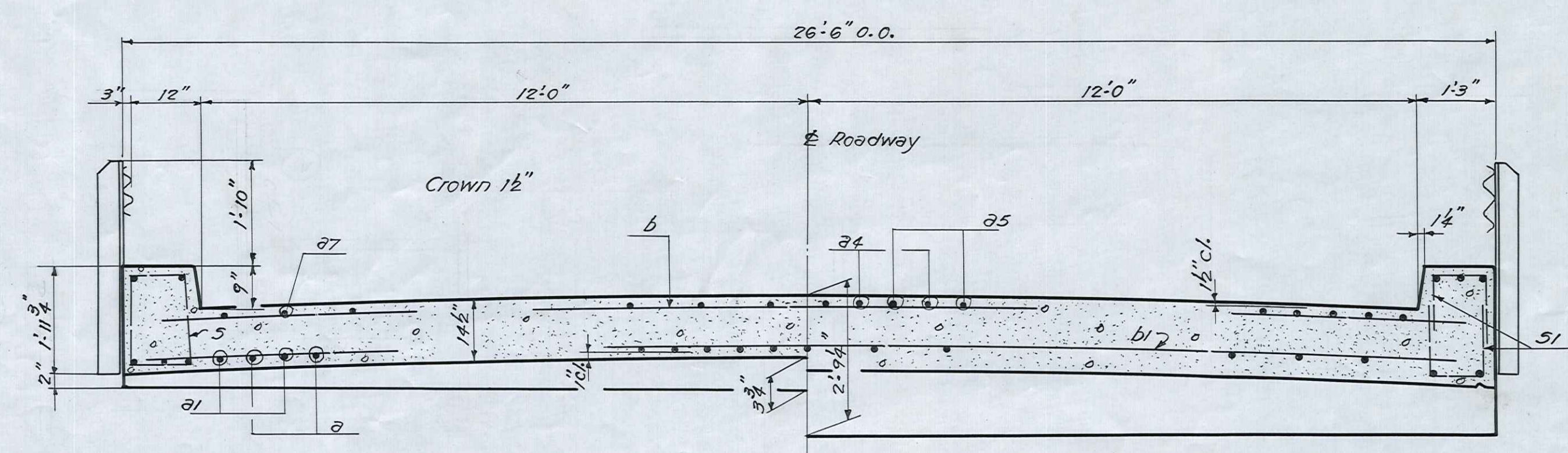
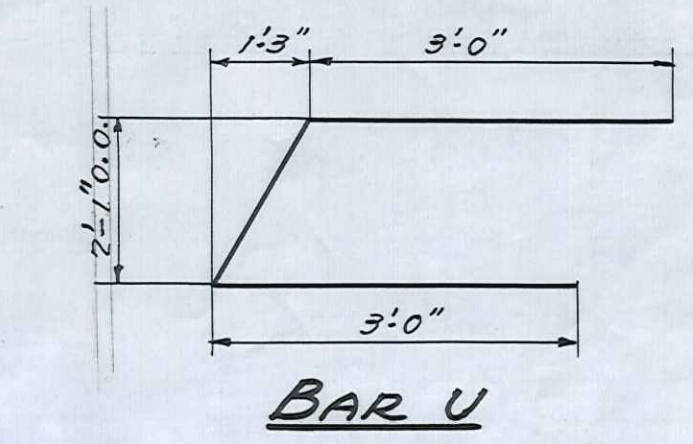
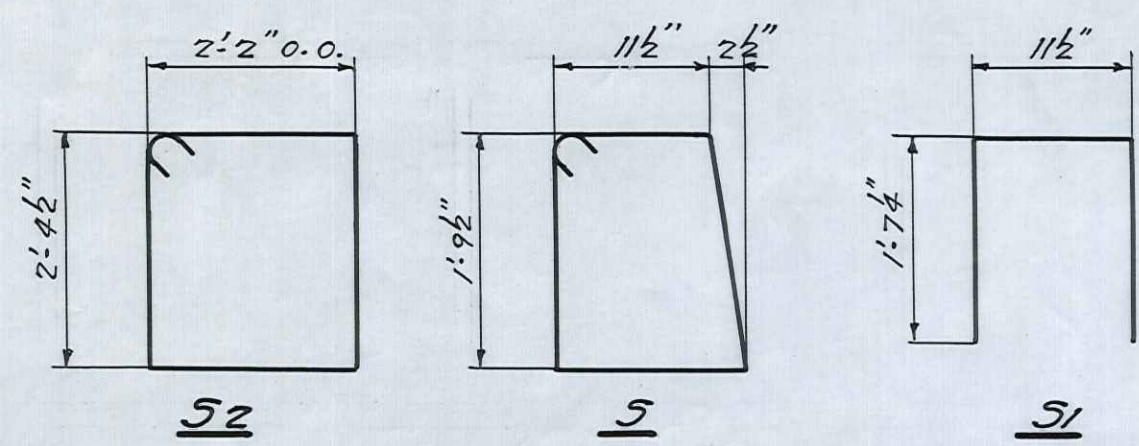
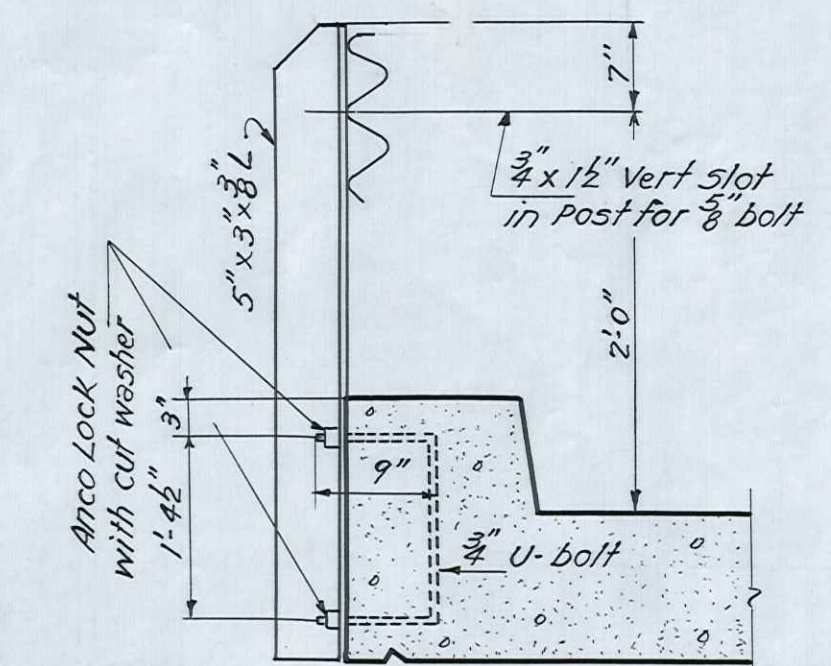
BEAVER CREEK
F. A. PROJECT-5-108 (3)
F.A.S. RT. 32 - SEC. 30 B
BOONE COUNTY
STA. 71+32



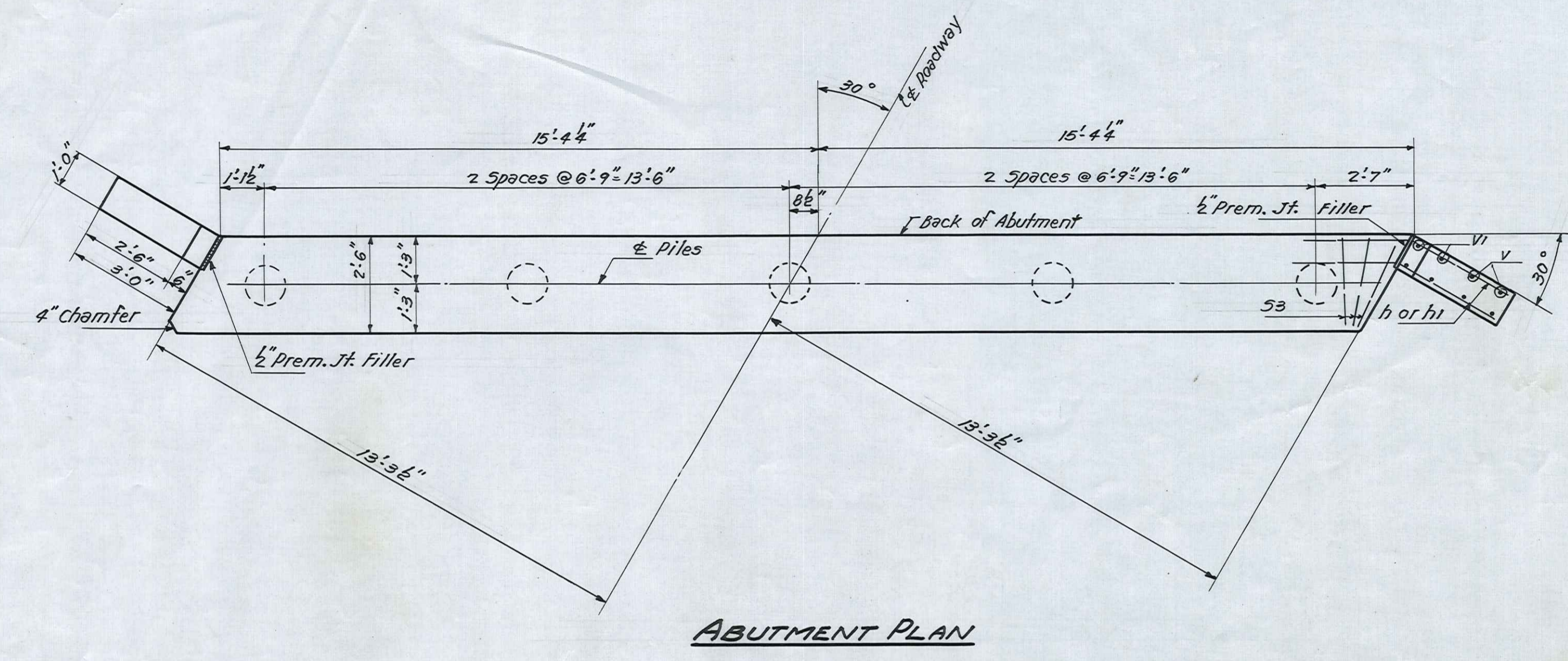
BILL OF MATERIAL-SUPER.

BAR	NO.	SIZE	LENGTH	SHAPE
a	54	#9	36'2"	—
a1	52	#9	25'10"	—
a2	27	#9	46'8"	—
a3	26	#9	24'4"	—
a4	50	#10	27'6"	—
a5	48	#10	17'6"	—
a6	25	#5	20'6"	—
a7	50	#5	22'6"	—
a8	54	#5	20'0"	—
b	92	#5	24'6"	—
b1	138	#5	25'0"	—
b2	8	#5	30'0"	—
c	8	#7	22'9"	—
c1	12	#10	27'6"	—
c2	4	#7	21'0"	—
p	14	#7	30'0"	—
s	162	#4	6'0"	—
s1	144	#4	4'2"	—
s2	52	#5	9'10"	—
u	1	#5	8'6"	—

Class-X Concrete Cu.Yds. 158.5
Reinforcement Bars Lbs. 40720

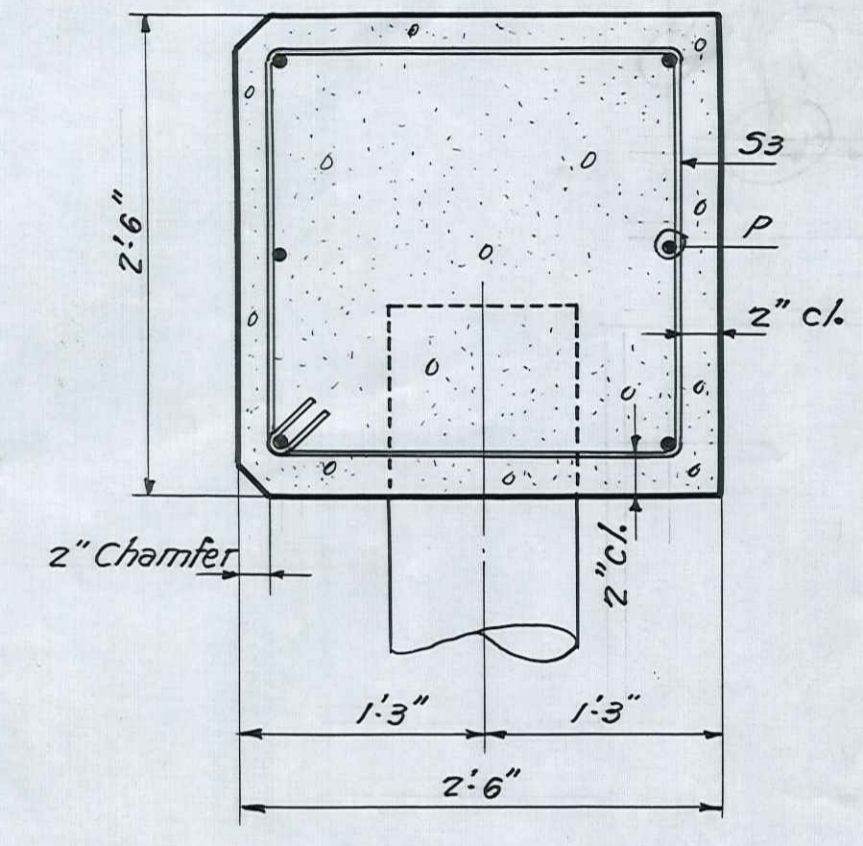


BEAVER CREEK
F.A. PROJECT-5-108(3)
F.A.S. Rt. 32-SEC. 30B
BOONE COUNTY
STA. 71+32

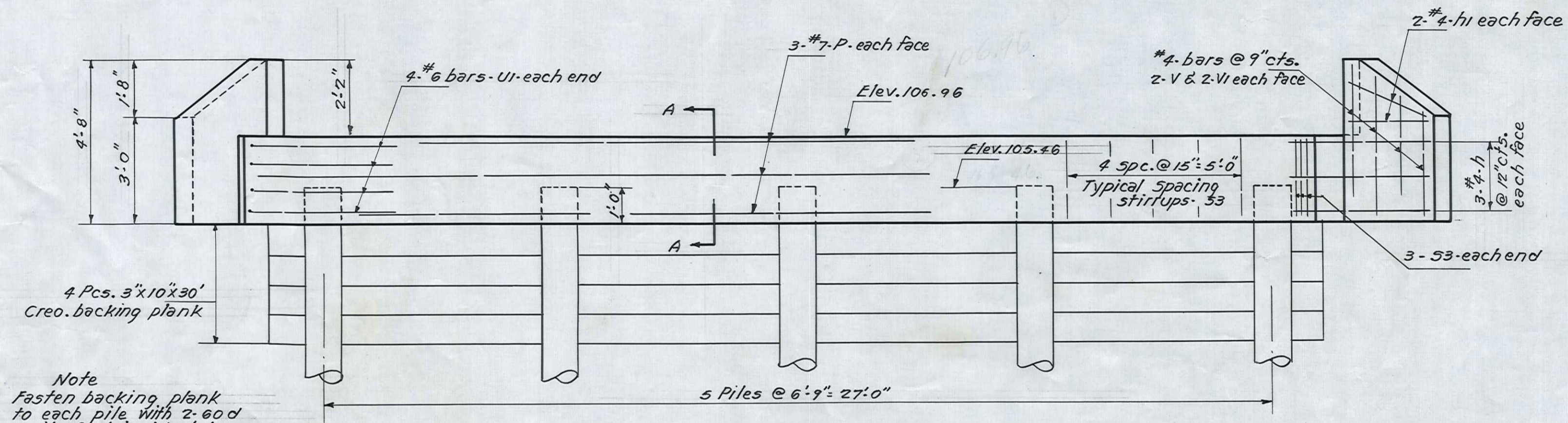


ABUTMENT PLAN

ABUTMENT PILES
 Creosoted Timber
 Min. Capacity - 18 Tons
 Est. Length - 21 Ft.
 No. Req'd. (2 Abuts.) - 10

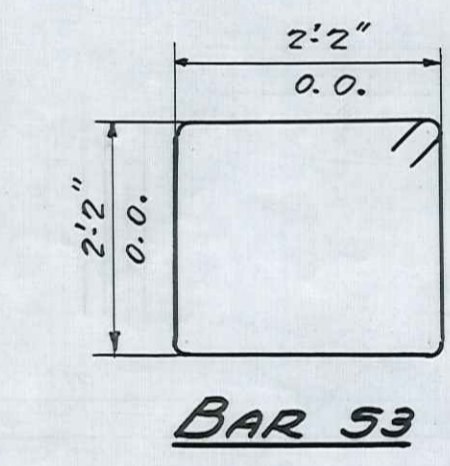


SECTION A-A

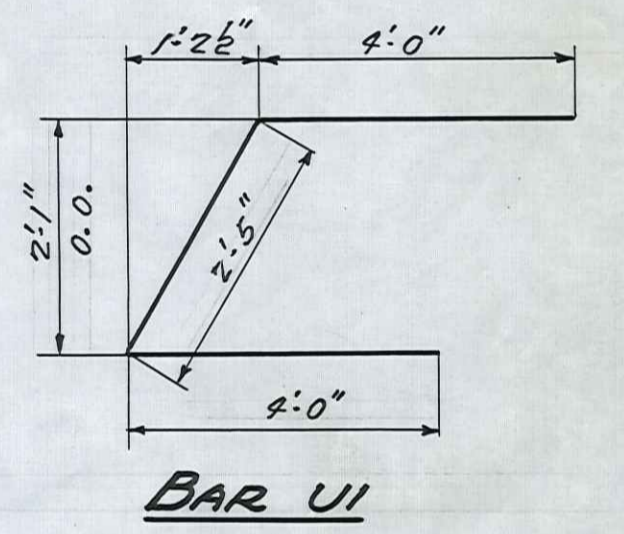


ABUTMENT ELEVATION

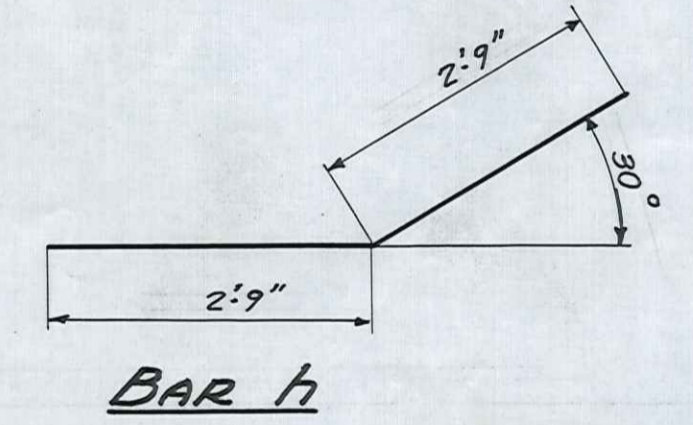
Note
 Fasten backing plank to each pile with 2, 60d nails. Cost incidental to contract.



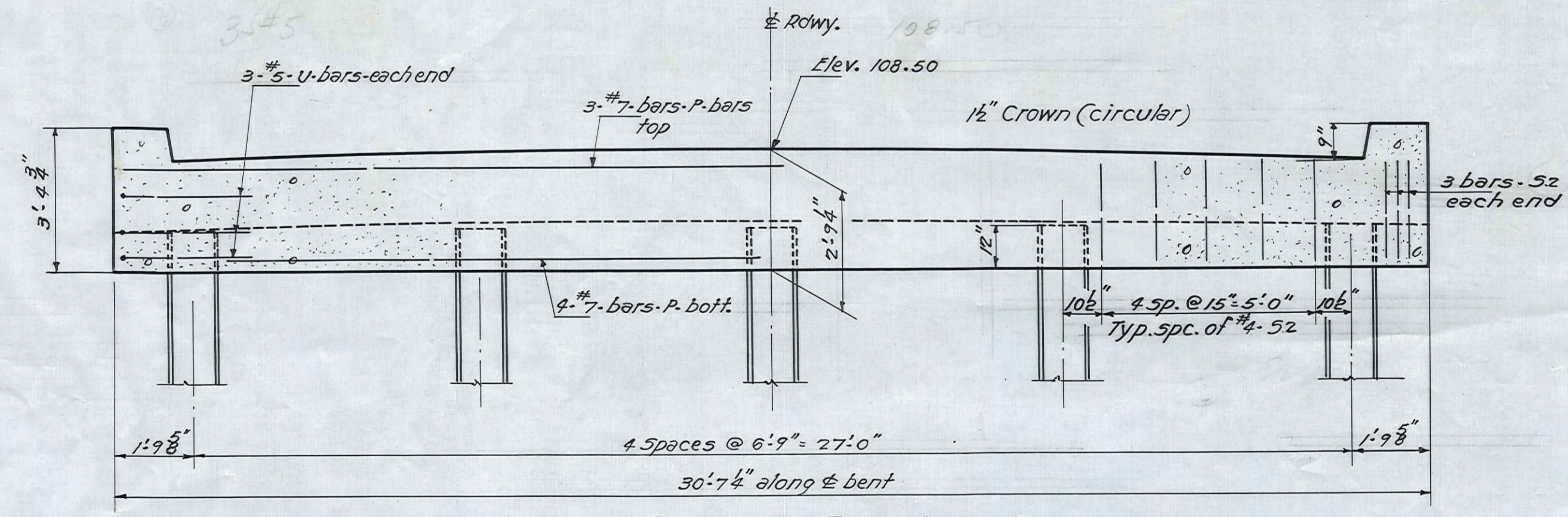
BAR 53



BAR UI

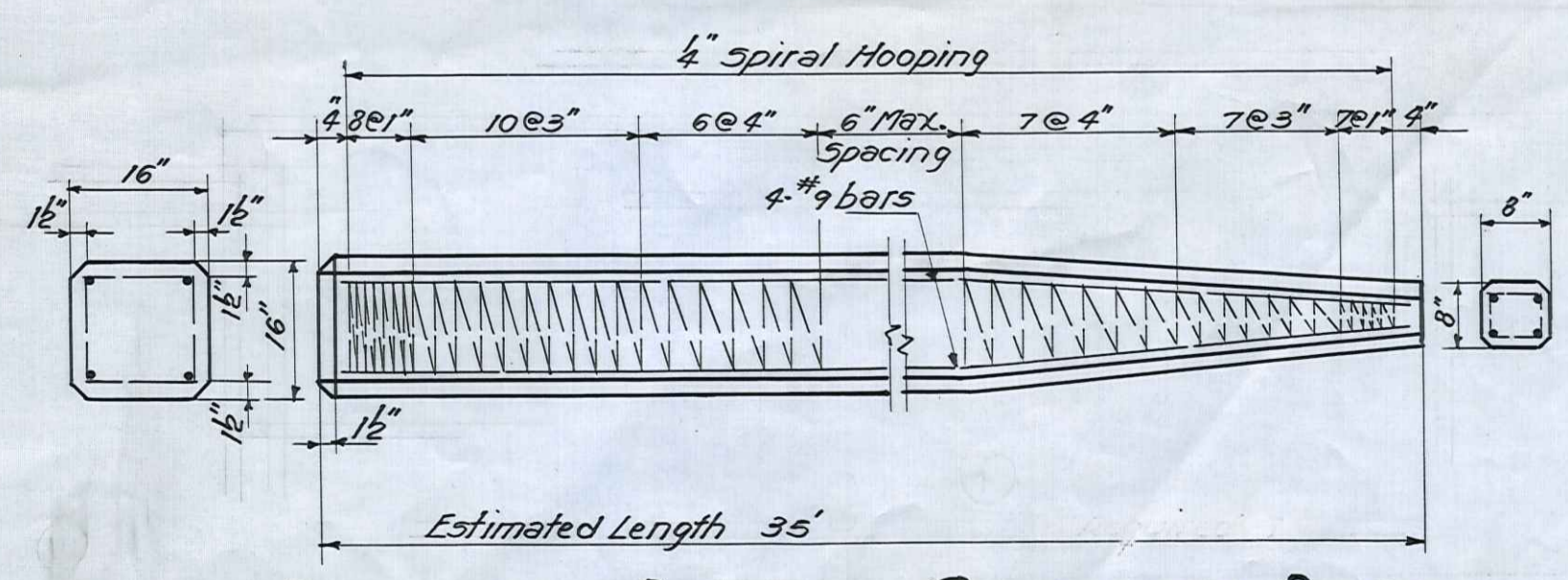


BAR h



SECTION THRU 1/2 OF PIER

PIER PILES
 16" Precast Concrete
 Min. Capacity 37 tons
 Est. length 35'-0"
 10 Req'd. (2 Piers)



DETAIL OF PRECAST CONCRETE PILES

BILL OF MATERIAL - 2 ABUTS.

BAR	NO.	SIZE	LENGTH	SHAPE
h	24	#4	5'-6"	—
h1	16	#4	2'-9"	—
P	12	#7	30'-0"	—
53	52	#4	9'-5"	□
UI	16	#6	10'-5"	└
V	16	#4	3'-0"	—
VI	16	#4	4'-0"	—
Class-X Concrete			Cu. Yds. 15.7	
Reinforcement Bars			Lbs. 1510	
Creosoted Piles (21'lg)			Lin. Ft. 189	
Treated Timber			F.B.M. 600	

BEAVER CREEK
 F.A. PROJECT 5-108 (3)
 F.A.S.P.T. 32 ~ SEC. 30B
 BOONE COUNTY
 STA. 71+32

For Reinforcement of Pier Bents
 See Bill of Material sheet 1