

INDEX OF SHEETS SECTION 101

Sheet No.	Title Page
1	Standard 1652 with Cover, 1203, 1635
2	Standard 1102, Detail of Title Traps.
3	Plan and Profile Sta. 90+00 to Sta. 120+00
4	Plan and Profile Sta. 120+00 to Sta. 177+80
5	Plan and Profile Sta. 120+00 to Sta. 177+80
6	Plan and Profile Sta. 333+80 to Sta. 471+89.5
7	Plan and Profile Sta. 627+00 to Sta. 675+00
8	Cross Sections.
9-26 inc.	Special Culvert Design Sta. 504+7, 504+23, 1116+0, 115+70.
27	Special Culvert Design Sta. 129+00, 145+00, 155+00.
28	Standards 1648, 1650
29	Standards 1661, 1664
30	Standards 1662, 1665
31	Standards 1671, 1663
32	

INDEX OF SHEETS SECTION 101B

Sheet No.	Title Page
1	Plan and Profile Sta. 120+00 to Sta. 177+80
33	Special Bridge Design Sta. 169+20 (Sheet No. 1 of 3)
34	Special Bridge Design Sta. 169+20 (Sheet No. 2 of 3)
34A	Special Bridge Design Sta. 169+20 (Sheet No. 3 of 3)

SUMMARY OF QUANTITIES SEC. 101

14569	Cu. yds.	Earth Excavation
5394	Cu. yds.	Borrow
9607	Cu. yds.	Settlement of Embankment
24033	Sq. yds.	Earth Shoulders
28158	Sq. yds.	P.C. Concrete Pavement
48	Each	Breaching Tight of Way Markers
430	Lin. ft.	Pipe Culverts 12 inch.
477	Cu. yds.	Class X Concrete
9856	Lbs.	Reinforcement Bars
890	Lin. ft.	Plain Concrete Gutter, Type A
16	Each	Tile Traps
1547	Sq. yds.	Riprap (12 inch)
7805	Bbls.	Cement
648	Sq. ft.	Weided Wire Fabric
2124	Cu. yds.	Salvaging Crushed Stone Surface Material
300	Bbls.	High-Early-Strength Portland Cement

SUMMARY OF QUANTITIES SEC. 101B

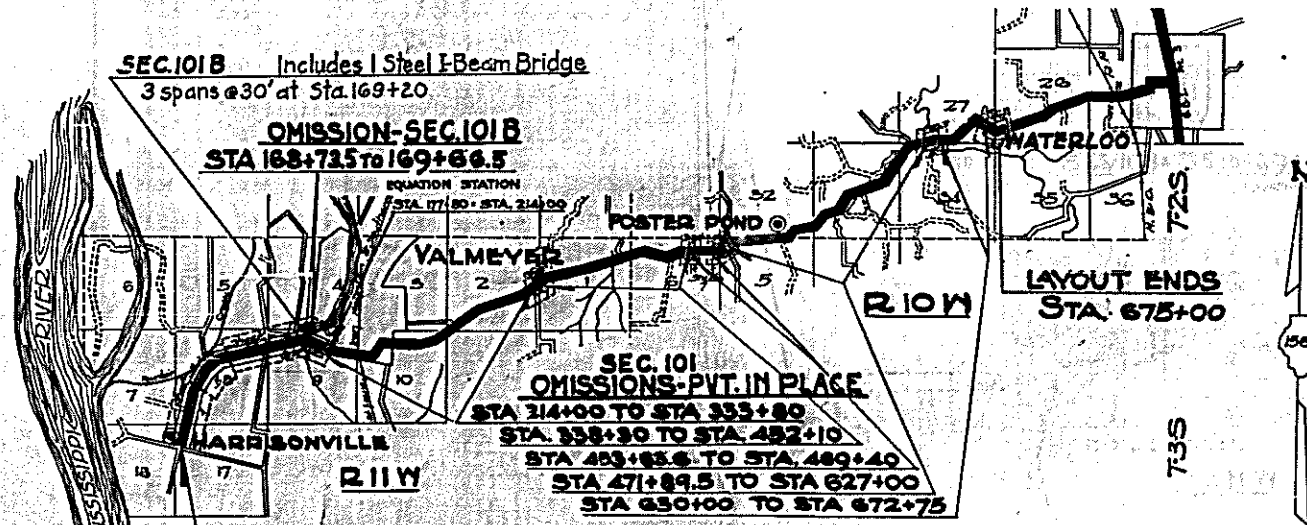
112	Cu. Yds.	Hard Rail Concrete
110.5	Cu. Yds.	Class X Concrete
20450	Lbs.	Reinforcement Bars
52880	Lbs.	Structural Steel
840	Lin. Ft.	Furnishing Precast Concrete Piles
840	Lin. Ft.	Driving Precast Concrete Piles
1	Each	Test Piles
18	Each	Floor Drains
1	Each	Removal of Old Bridge
284	Bbls.	Cement

STATE OF ILLINOIS
DEPARTMENT OF PUBLIC WORKS AND BUILDINGS
DIVISION OF HIGHWAYS
PLANS FOR PROPOSED
STATE BOND ISSUE HIGHWAY

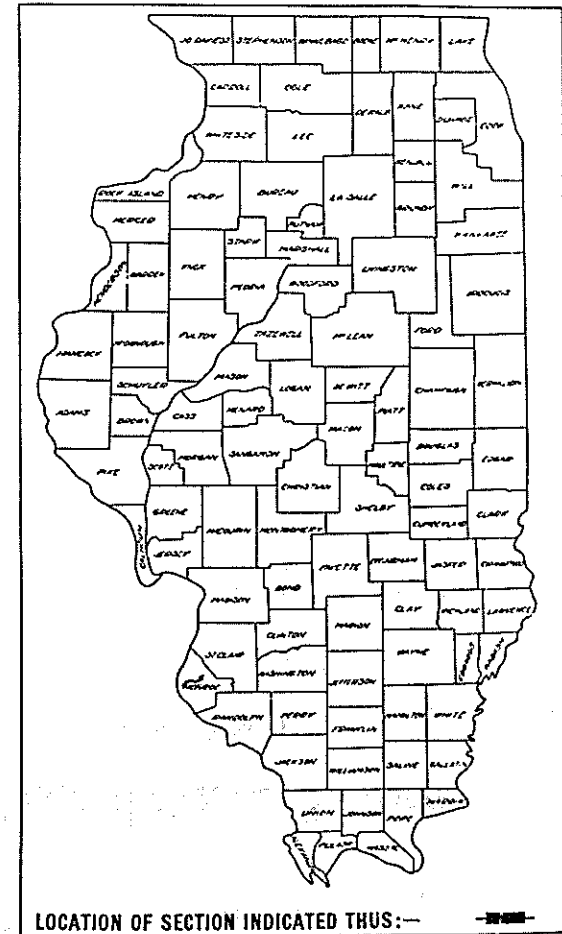
SCALES
PLAN 1 INCH = 100 FT.
PROFILE, HOR. 1 INCH = 100 FT.
PROFILE, VERT. 1 INCH = 10 FT.
CROSS-SECTIONS 1 INCH = 8 FT.

ROUTE 156. SECTION 101. MONROE CO.
101B

From a point near the S.W. Corner of the N.W. 1/4 of the N.W. 1/4 of Sec. 17, T. 33, R. 11 W. of the 3rd P.M.
To a point near the N.E. Corner of the S.W. 1/4 of the S.W. 1/4 of Section 26, T. 25, Range 10 West of the 3rd P.M.



LAYOUT
Approximate Scale 1" = 1 mile.
Net length of layout: 14160.2 feet = 2.6819 miles



LOCATION OF SECTION INDICATED THUS:—

STATE OF ILLINOIS
DEPARTMENT OF PUBLIC WORKS AND BUILDINGS
DIVISION OF HIGHWAYS

SUBMITTED: December 30, 1918
S. E. Wilson, DISTRICT ENGINEER

EXAMINED: 1-23-19
E. W. ... DISTRICT ENGINEER

PASSED: 4-2-19
M. J. ... DISTRICT ENGINEER

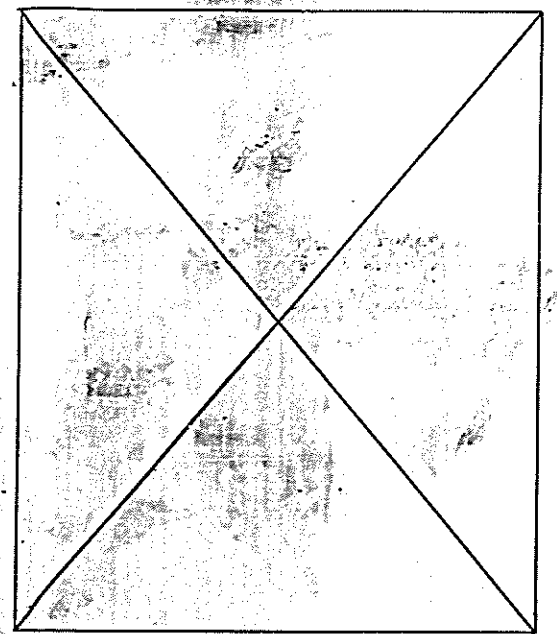
APPROVED: 4-2-19
... DISTRICT ENGINEER

APPROVED: 4-2-19
... DISTRICT ENGINEER

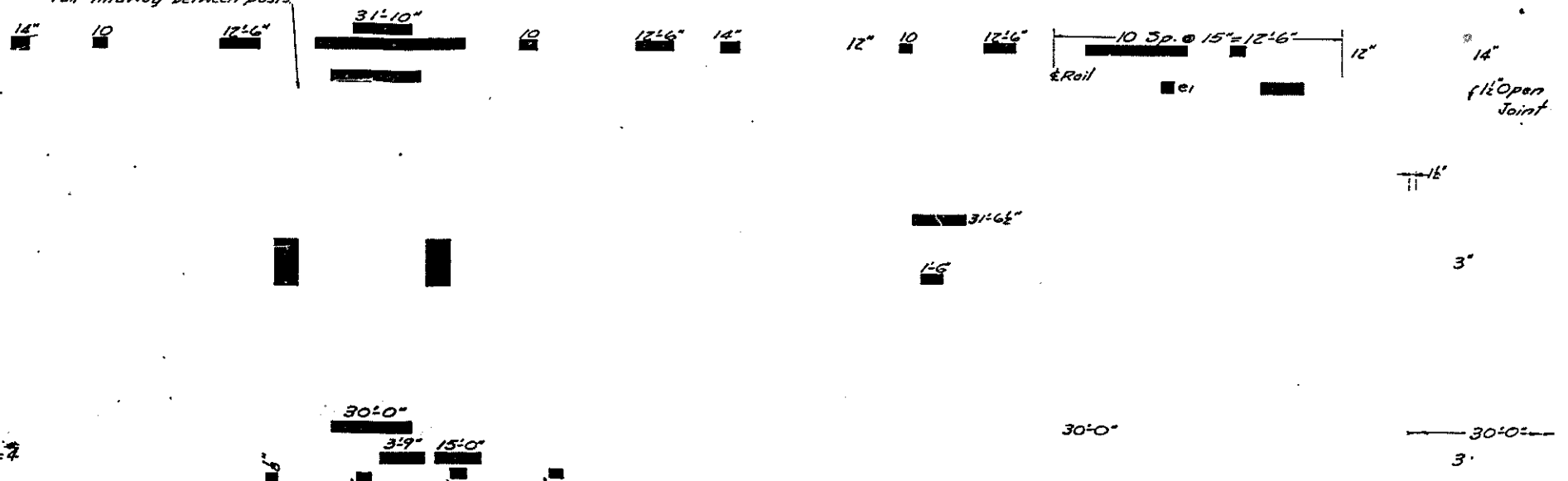
8-19
169+20

STATE LINE	=====	RETAINING WALL	=====
COUNTY LINE	=====	BASE OR SURVEY LINE	=====
CITY, VILLAGE OR TOWN	=====	LEVEE	=====
TOWNSHIP LINE	=====	CULVERT	=====
SECTION LINE	=====	STORM SEWER	=====
GRANT LINE	=====	TILE DRAIN	=====
SECTION CORNER	=====	DROP INLET	=====
FENCE LINE	=====	TROLLEY POLE	=====
UNFENCED PROPERTY	=====	POWER POLE	=====
RIGHT OF WAY LINE	=====	TELEPHONE OR TELEGRAPH POLE	=====
GUARD RAIL	=====	MARSH	=====
STEAM RAILROAD	=====	HEDGE	=====
ELECTRIC RAILROAD	=====		

Use one 1" open joint in rail midway between posts



See Sht. #3 for Detail of Exp. Guard



-3 SPANS

152	34	33'-0"
152		34'-5"
60		31'-0"
b1 30		29'-6"
16		
24		15'-3"
156		5'-0"
8		33'-6"
54		56'-6"
8		
34		21'-9"
84		3'-6"
Test Pile -	Ea. -	1
Floor Drains	Ea. -	16
		64.2
		11.2
		46.3
		20,450
		52,880
Removal of existing structure -	Ea. -	1
R.C. Piles -	Lim. Ft.	840

NOTE:
Bridges to be skewed opposite hand to details shown on this sheet. See Sht. #1 for correct skew.

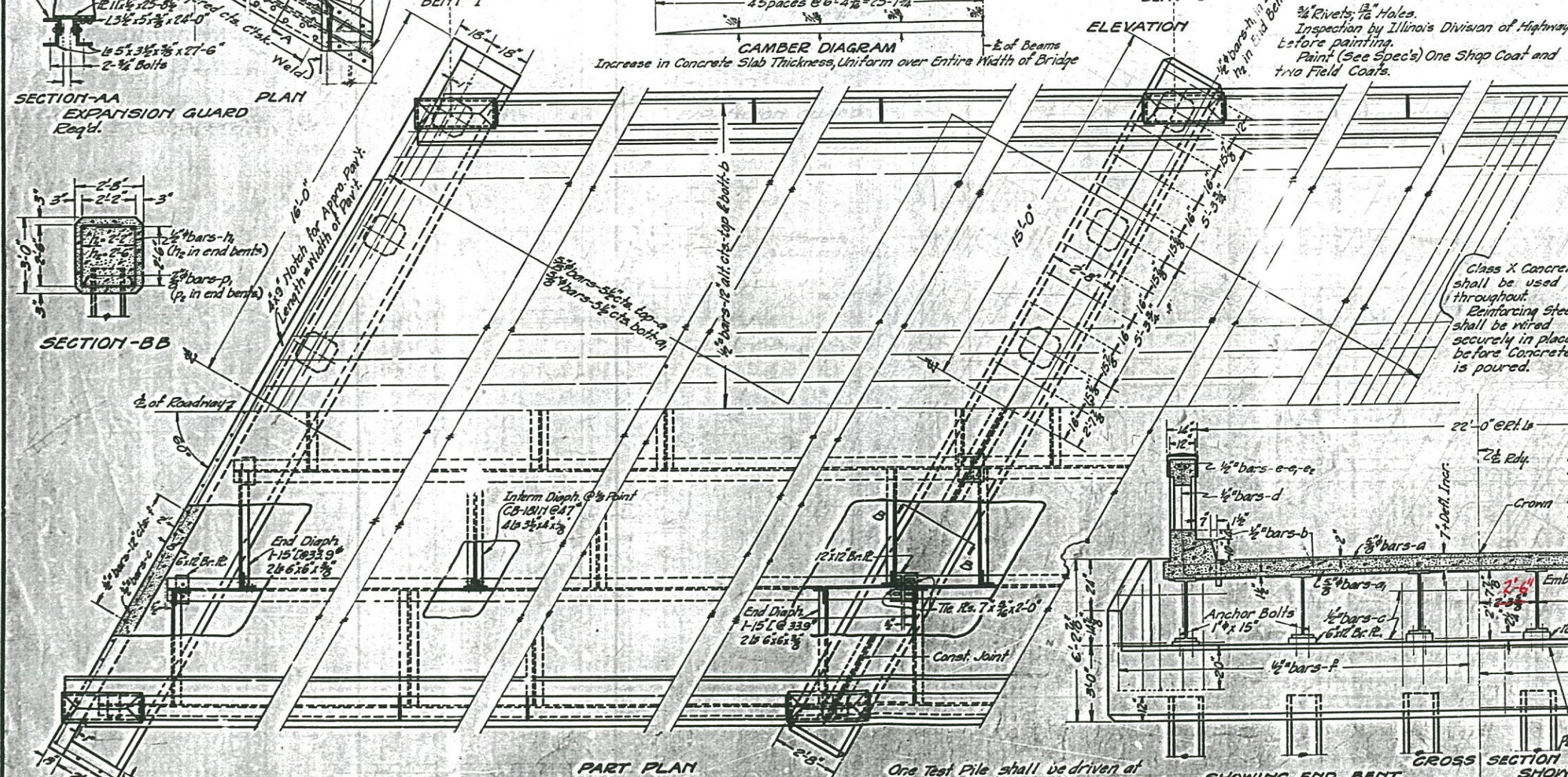
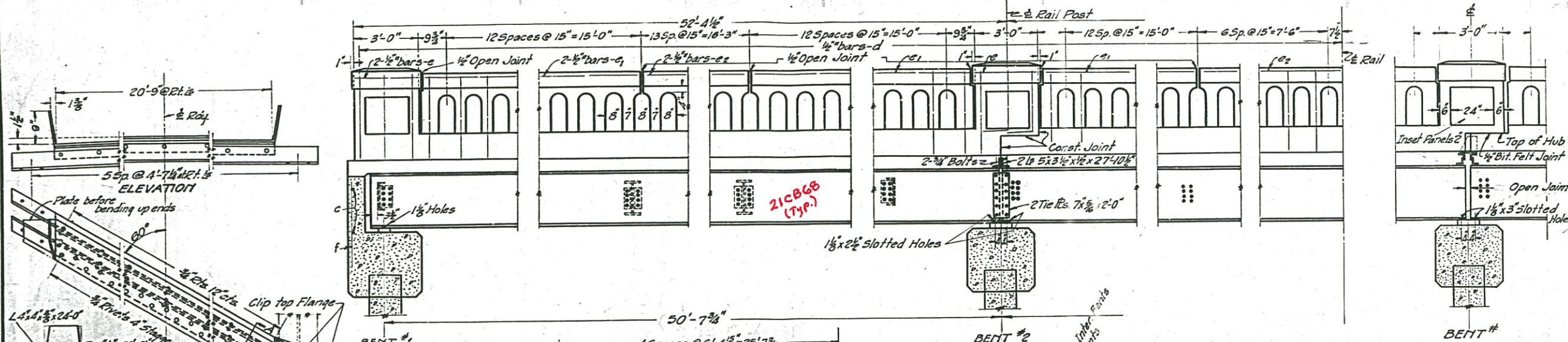
1/2 of Span Only
15'-11.339"

S. Barnowitz
H. Owens

9-13-34
B. F. Bursh
H. J. Swann
E. Lieberman

(See Note on Sht. #1)

S.B.I. ROUTE 156 SEC. 101B-NRS.
MONROE COUNTY
STA. 169+20



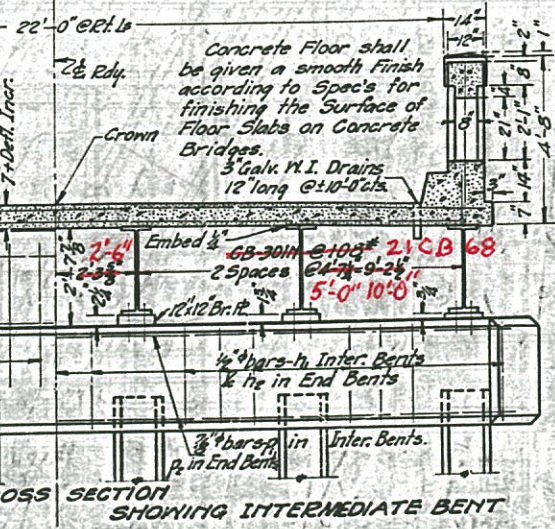
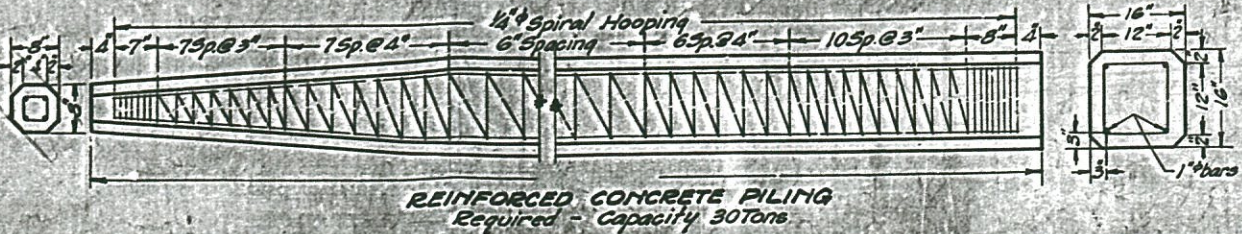
BILL OF MATERIAL

Bar	No.	Size	Length
a		3/8"	27'-6"
a1			29'-0"
b		1/2"	26'-6"
c		1/2"	3'-0"
e1			15'-6"
ee			16'-0"
d			3'-9"
D1		3/8"	29'-6"
H1		1/2"	11'-0"
D2		3/8"	16'-6"
H2		1/2"	11'-6"
C		1/2"	19'-6"
F			4'-0"

Class X Concrete shall be used throughout.
Reinforcing steel shall be wired securely in place before concrete is poured.

Class X Conc. (Floor) - Cu. Yds.
Class X Conc. (Rails) - Cu. Yds.
Class X Conc. (Caps) - Cu. Yds.
Reinforcing Steel - Lbs.
Structural Steel - Lbs.
Name Plate

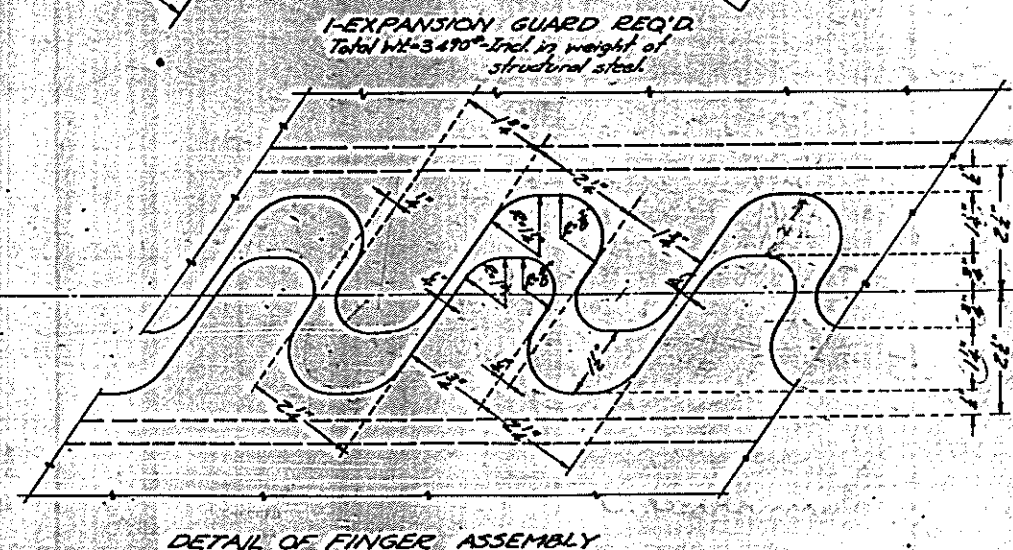
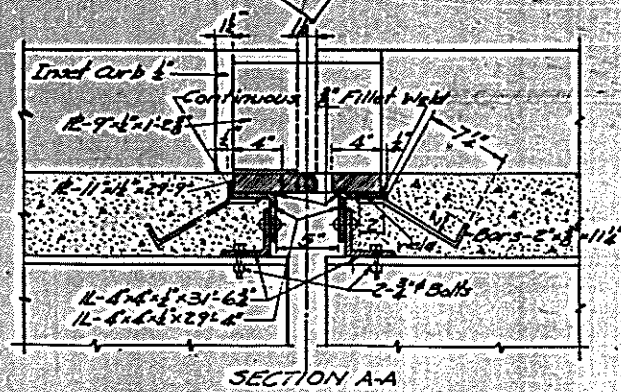
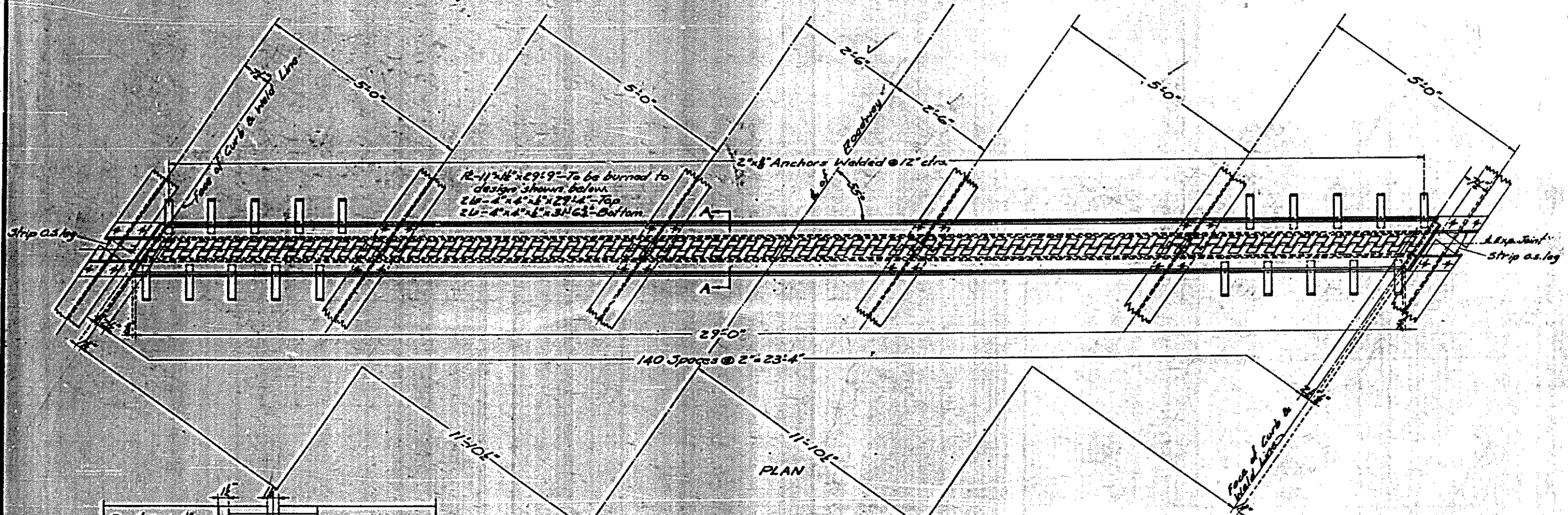
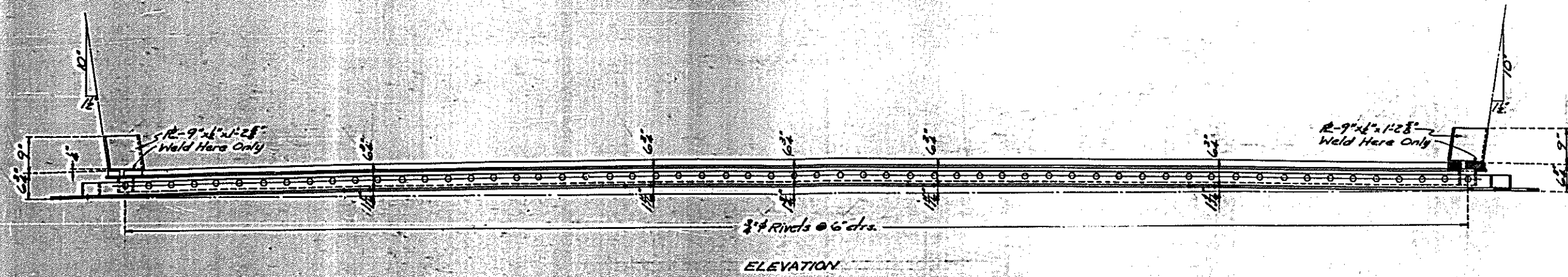
STANDARD	COMPUTED - Standard 1522	EXAMINED	19
	CHECKED -	BRIDGE ENGINEER	
	DRAWN - H. H. H. H.	ENGINEER OF DESIGN	
	CHECKED - M. M. M. M.	CHIEF HIGHWAY ENGINEER	
SPECIAL	ASSEMBLED -		
	CHECKED -		



REINFORCED CONCRETE PILING
Required - Capacity 30 Tons

STATE OF ILLINOIS
DEPARTMENT OF PUBLIC WORKS & BUILDINGS
DIVISION OF HIGHWAYS

ROUTE NO.	156	101B	Monroe	34	34A	SHEET NO. 2
P.E.R. ROAD DIST. NO. 7						3 SHEETS



NOTES

Entire finger assembly to be burned from one 11"x16" plate.

The top edge of the fingers shall be rounded to a 1" radius.

Any burrs or irregularities of the burned surface of the fingers shall be ground smooth.

Plate fingers to be assembled in the shop to check clearances and to insure the proper functioning of the device to the satisfaction of the Engineer.

STANDARD	COMPUTED	<i>A. Barnhart</i>	EXAMINED	9-27	1934
	CHECKED	<i>J.H. Owen</i>		<i>G.F. Pouch</i>	
SPECIAL	DRAWN	<i>A. Barnhart</i>	PASSED	<i>H. J. ...</i>	
	CHECKED	<i>J.H.O.</i>		<i>E. ...</i>	
	ASSEMBLED		APPROVED	<i>E. ...</i>	
	CHECKED				

S.B.I. ROUTE 156 SEC. 101-B-N.R.S.
MONROE COUNTY
STA. 169+20