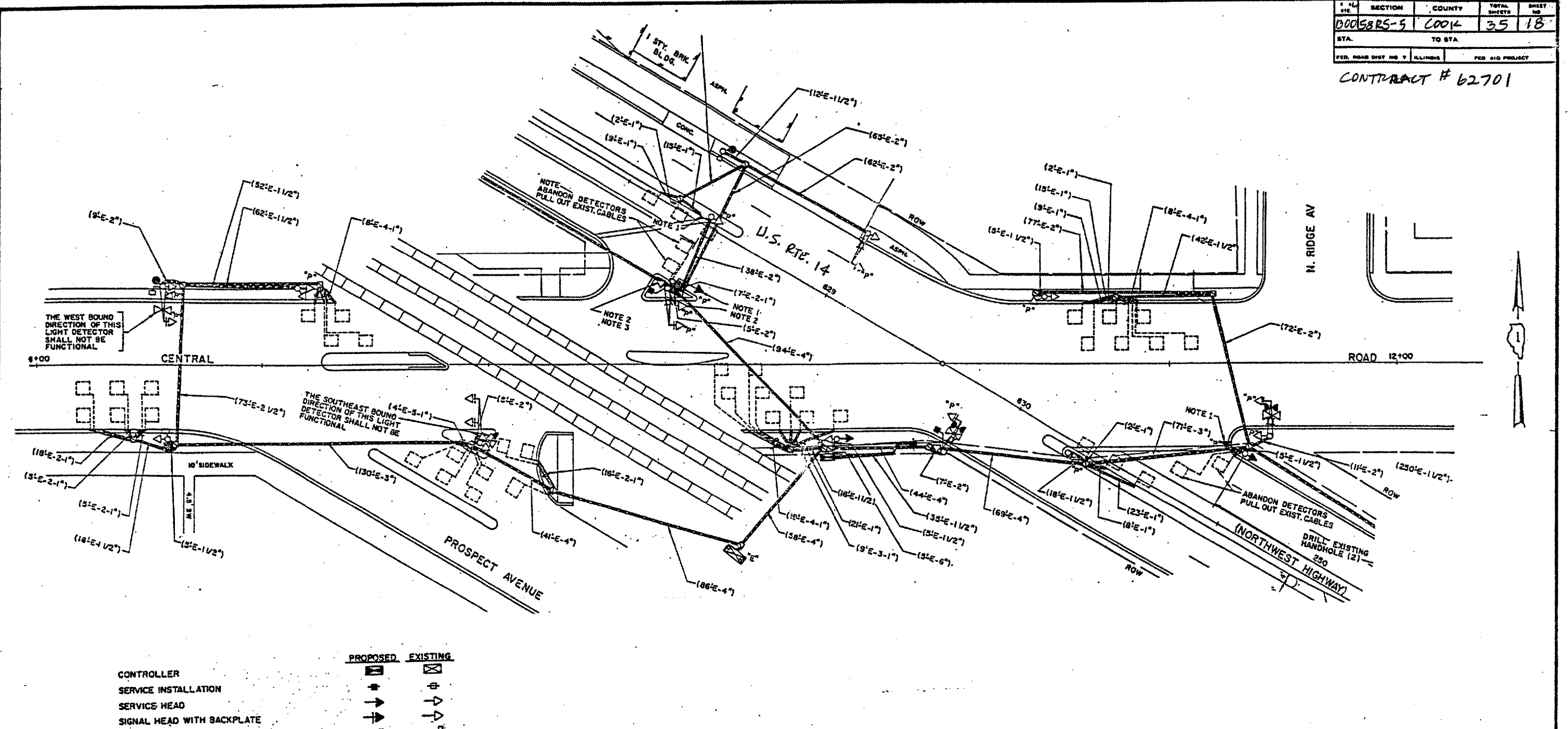


SECTION	COUNTY	TOTAL SHEETS	SHEET NO.
D0058RS-5	COOK	35	18
STA. TO STA.		FED. ROAD DIST. NO. 7 ILLINOIS	
		FED. AID PROJECT	

CONTRACT # 62701



	PROPOSED	EXISTING
CONTROLLER	[Symbol]	[Symbol]
SERVICE INSTALLATION	[Symbol]	[Symbol]
SERVICE HEAD	[Symbol]	[Symbol]
SIGNAL HEAD WITH BACKPLATE	[Symbol]	[Symbol]
SIGNAL HEAD PEDESTRIAN	[Symbol]	[Symbol]
SIGNAL POST	[Symbol]	[Symbol]
MAST ARM ASSEMBLY & POLE, STEEL	[Symbol]	[Symbol]
MAST ARM ASSEMBLY & POLE, ALUMINUM	[Symbol]	[Symbol]
COMMON TRENCH	[Symbol]	[Symbol]
UNIT DUCT	[Symbol]	[Symbol]
HANDHOLE	[Symbol]	[Symbol]
HEAVY DUTY HANDHOLE	[Symbol]	[Symbol]
DOUBLE HANDHOLE	[Symbol]	[Symbol]
G. S. CONDUIT IN TRENCH OR PUSHED	[Symbol]	[Symbol]
PEDESTRIAN PUSHBUTTON DETECTOR	[Symbol]	[Symbol]
DETECTOR LOOP	[Symbol]	[Symbol]

REPLACE ALL DETECTOR LOOPS AS SHOWN
(WITHIN THE RESURFACING LIMITS)

CODE NO.	QUANTITY	UNIT	ITEM
86600600		Foot	Detector Loop Replacement

FOR INFORMATION ONLY

NOTE:
THIS PLAN IS FOR THE PURPOSE OF REPLACING THE DETECTOR LOOPS ONLY. ALL OTHER INFORMATION SHOWN IS NOT RELATED AND WILL BE DISREGARDED.

ILLINOIS DEPARTMENT OF TRANSPORTATION
DETECTOR LOOP REPLACEMENT
U.S. RTE. 14 @ CENTRAL ROAD

SCALE: 1" = 20'
DATE: APRIL, 04

DRAWN BY: _____
DESIGNED BY: _____
CHECKED BY: _____

REVISIONS	
NAME	DATE