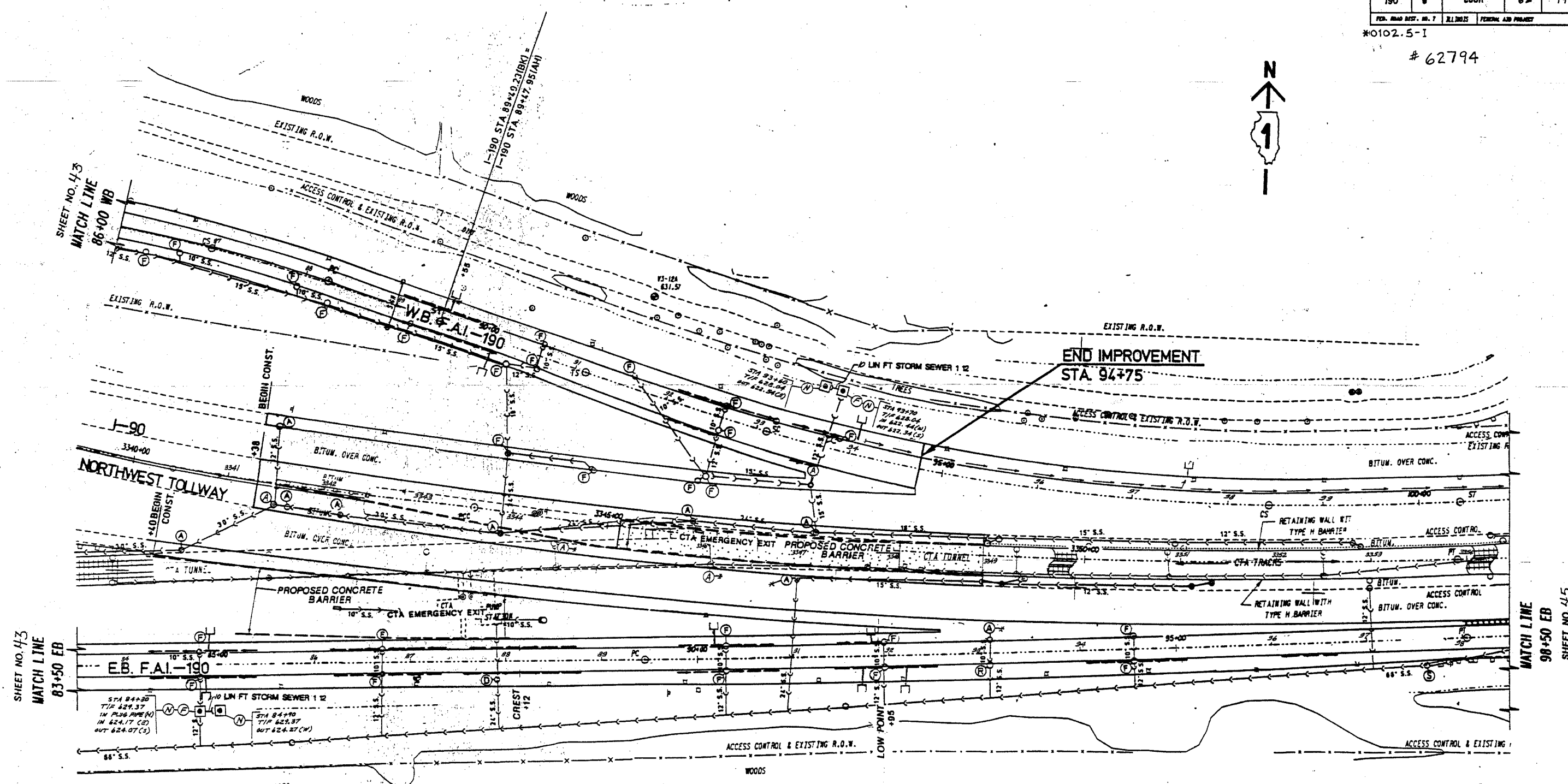


F.A.I. M.L.	SECTION	COUNTY	SHEET NO.	SHEET TOTAL
190	6	COOK	62	19
FED. ROAD DIST. NO. 7		ILLINOIS	FEDERAL AID PROJECT	

\*0102.5-1

# 62794



FOR INFORMATION ONLY

UIC 0561152.012  
 DATE: 10/11/06  
 DRAWN BY: MRE  
 CHECKED BY: MRE  
 DESIGNED BY: MRE  
 GRAPHIC: MRE  
 PLOT: MRE  
 PLOT DATE: 10/11/06  
 PLOT SCALE: 1"=50'  
 OPTIONAL PHS:

designed by: MRE  
 checked by: MRE  
 graphics by: MRE  
 Computer Aided Design & Drafting

STATE OF ILLINOIS DEPARTMENT OF TRANSPORTATION DISTRICT ONE	HEMMEY EXPRESSWAY F.A.I. ROUTE 150 REHABILITATION PROJECT
<b>EXISTING DRAINAGE AND UTILITIES PROPOSED DRAINAGE</b> STA. 83+50 - STA. 98+50 E.B.	
designed by: MRE checked by: MRE Farm Associates	SCALE: 1"=50' REVISED 10/11/06