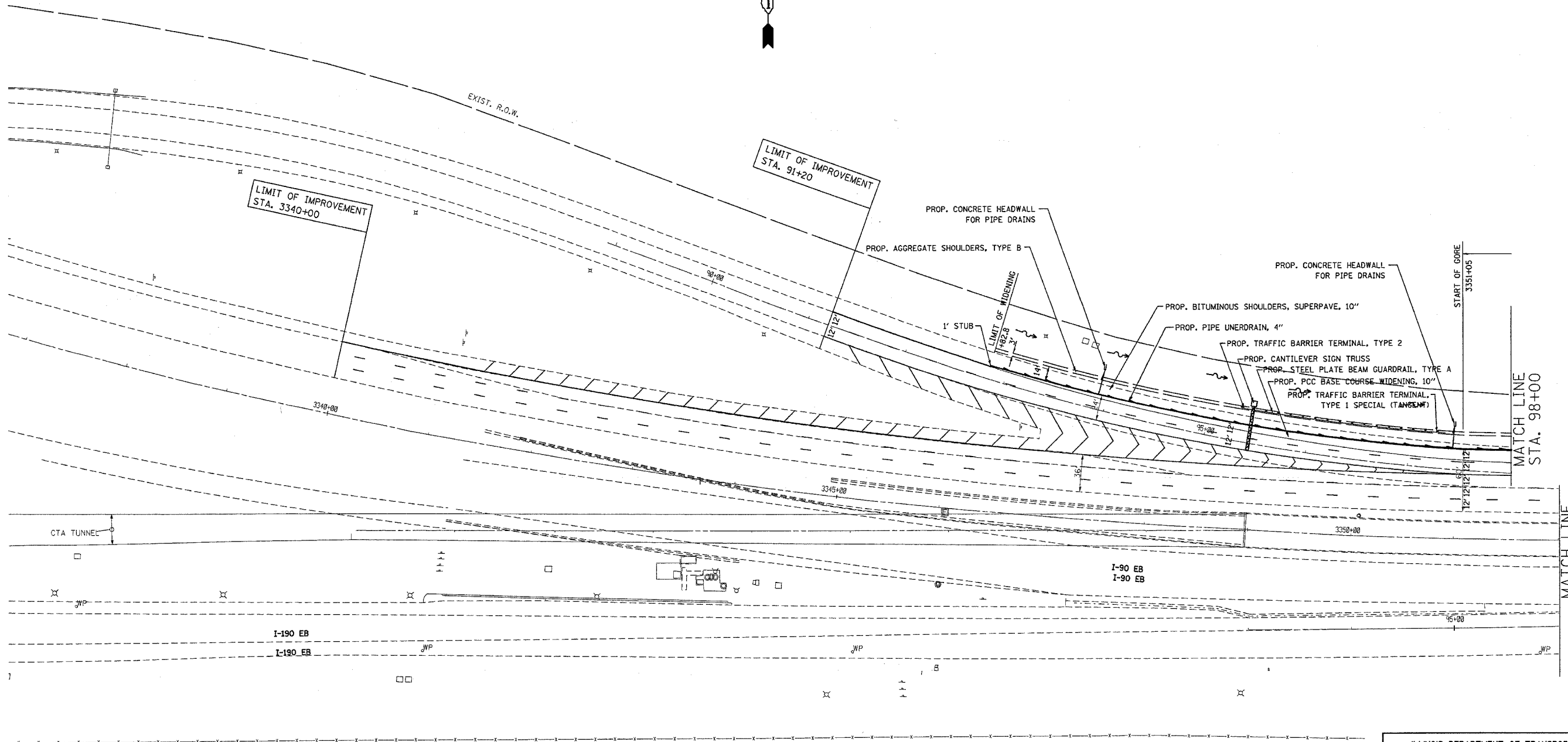
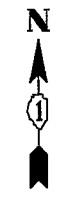


F.A.T. RTE.	SECTION	COUNTY	TOTAL SHEETS	SHEET NO.
90	0102.5-1	COOK	62	21
STA. 3337+00 +/- TO STA. 3352+00				
FED. ROAD DIST. NO. 1		ILLINOIS	JOB NO.	

62794



REVISIONS	
NAME	DATE

ILLINOIS DEPARTMENT OF TRANSPORTATION
FAI 90 (KENNEDY EXPRESSWAY)
@ I-190 RAMP
PROPOSED PLAN

SCALE: HORIZ. 0 50 100
 SCALE IN FEET

DATE 10/27/2004 DRAWN BY CADG CHECKED BY

10/27/2004
 c:\projects\9127704\12770400.mxd

VI=PLANI