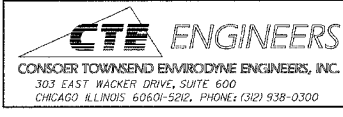
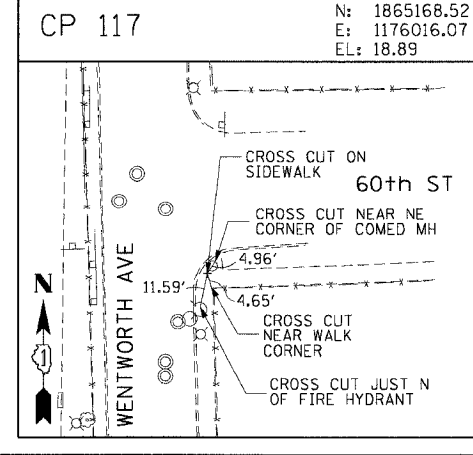
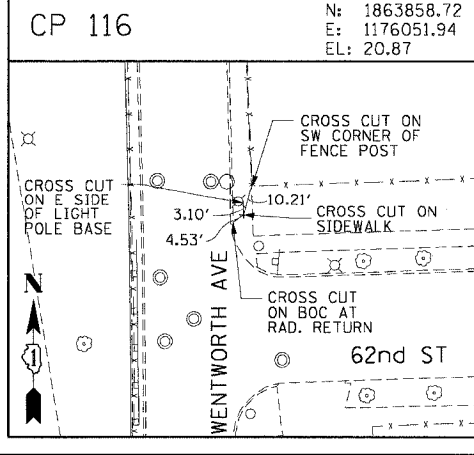
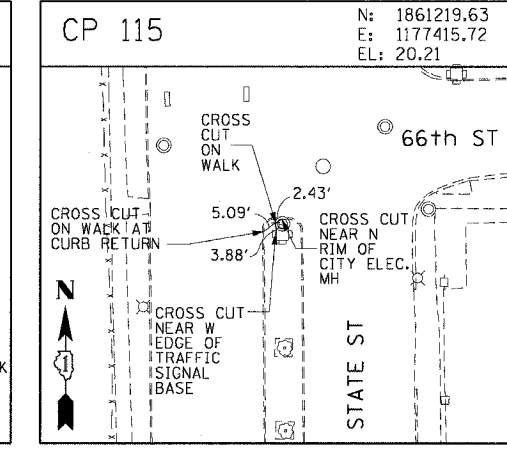
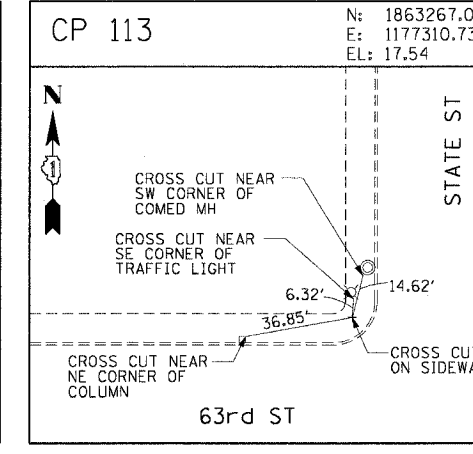
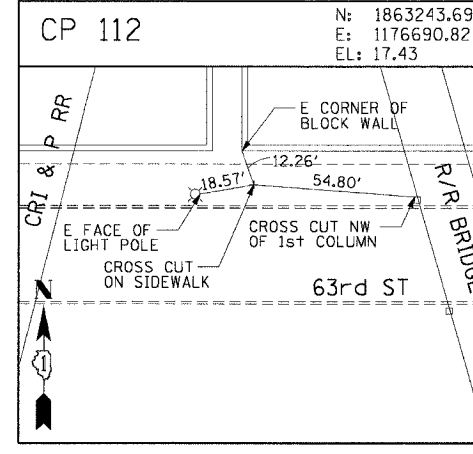
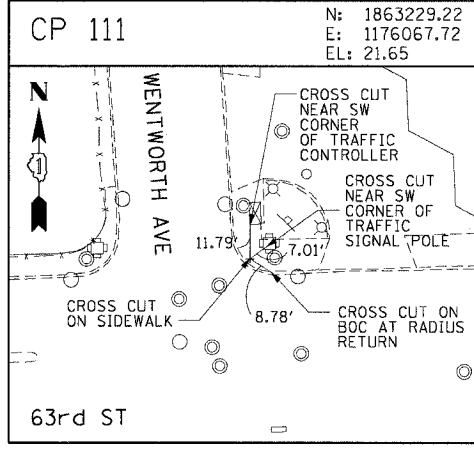
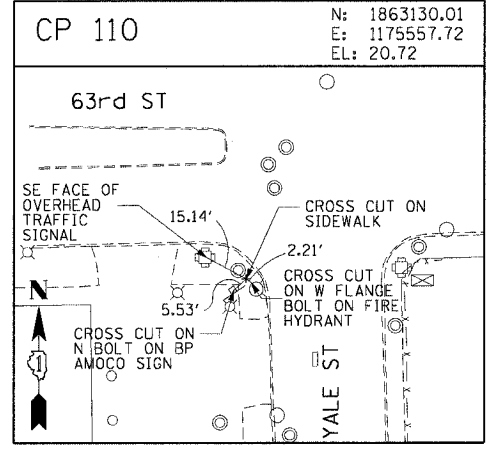
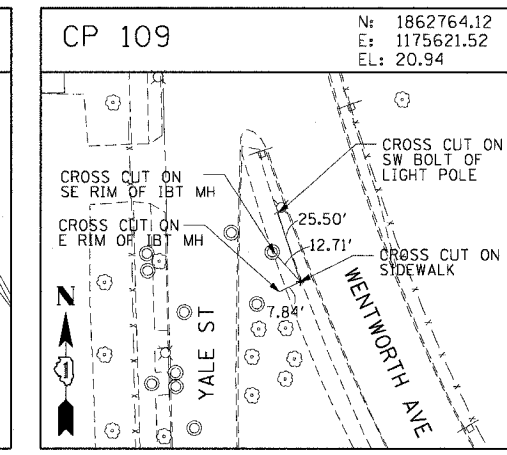
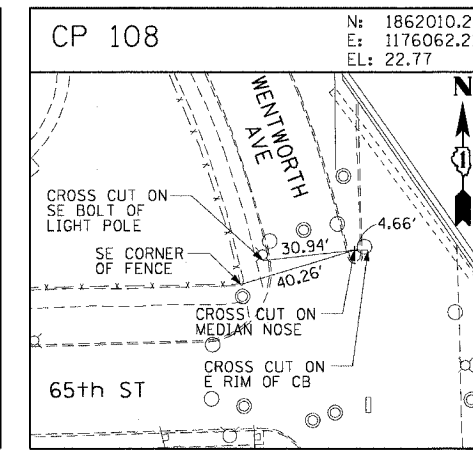
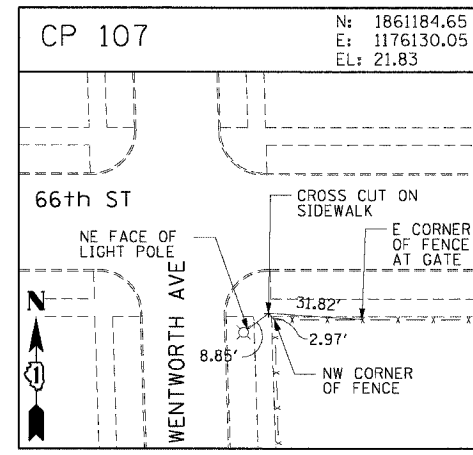
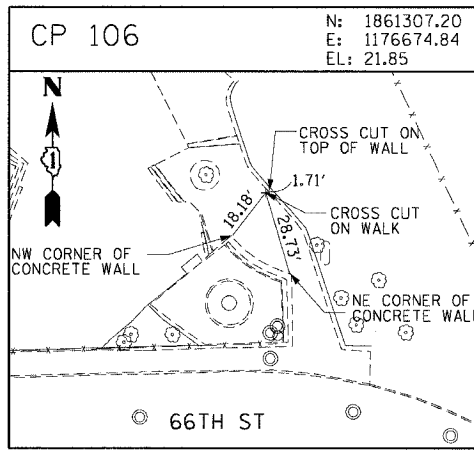
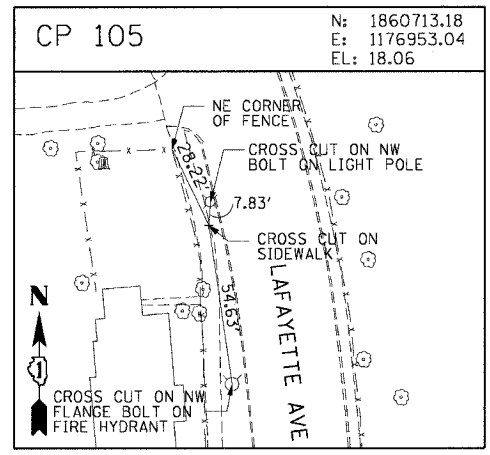
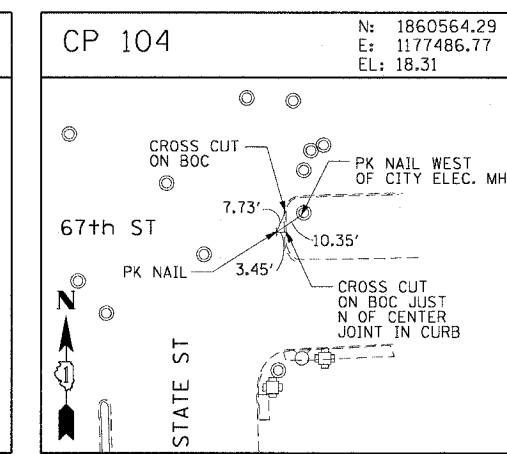
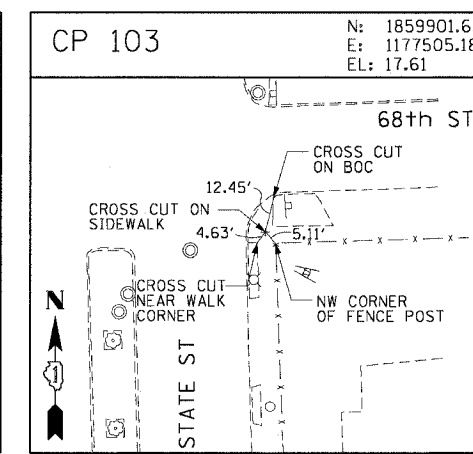
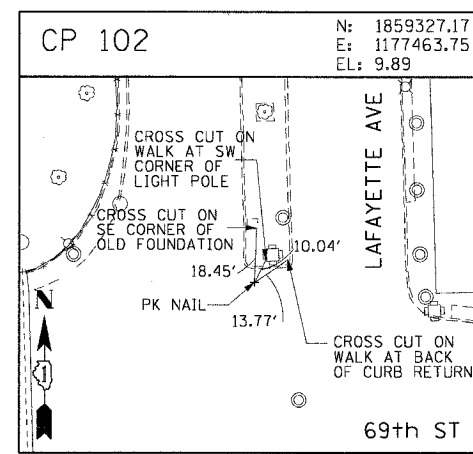
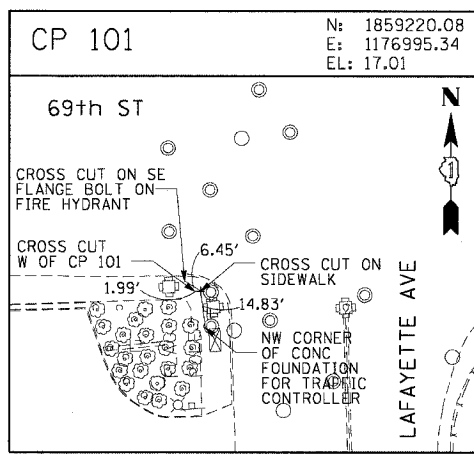
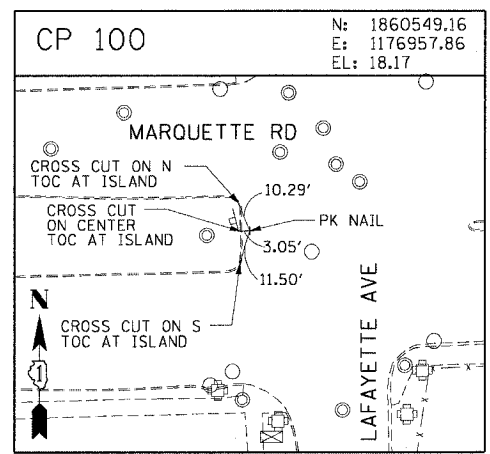


F.A.I. RTE.	SECTION	COUNTY	TOTAL SHEETS	SHEET NO.
90/94	2004-06515	COOK	62	15
STA.		TO STA.		
FED. ROAD DIST. NO. 1 ILLINOIS FED. AID PROJECT				
62804				



REVISIONS	
NAME	DATE

ILLINOIS DEPARTMENT OF TRANSPORTATION
 F.A.I. 90/94 (DAN RYAN EXPRESSWAY)
 TRAFFIC SIGNALS AT 47TH STREET WITH
 WENTWORTH AVENUE - LASALLE STREET AND
 WELLS STREET - WENTWORTH AVENUE

SURVEY TIES AND CONTROL POINTS

SCALE: 1"=30'
 DATE: October 29, 2004

DRAWN BY: MRK
 CHECKED BY: JAL

MAP-40468-CIVIL-4-CHT-9-ADD-CHT-9-010-47TH-ST-LASALLE-010-2004 10/27/2004 12:43:11 PM