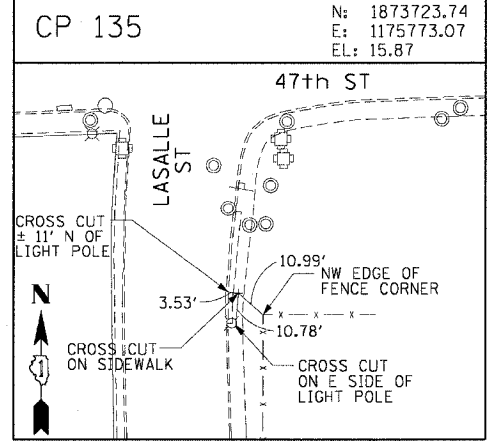
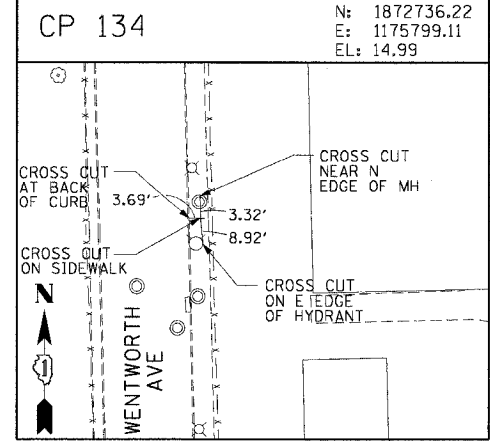
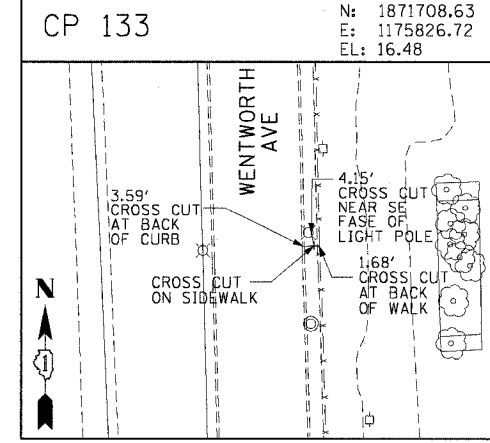
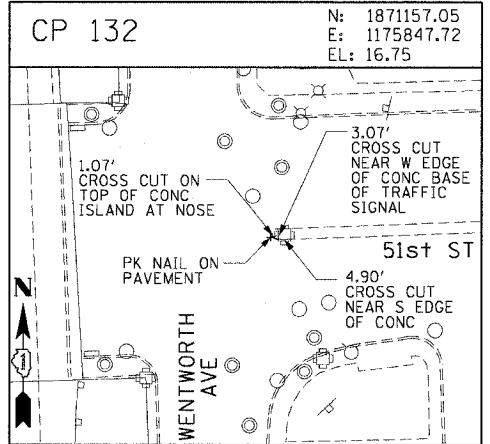
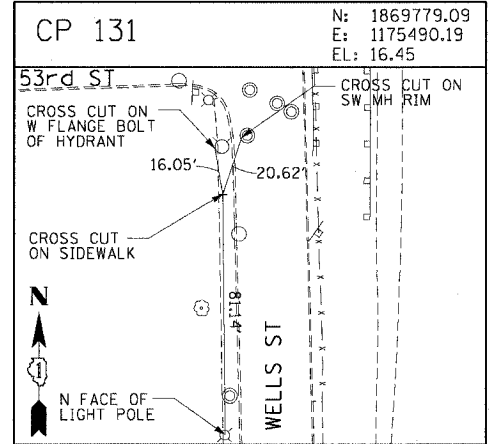
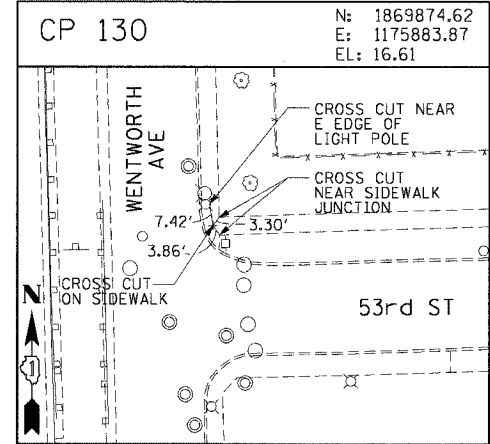
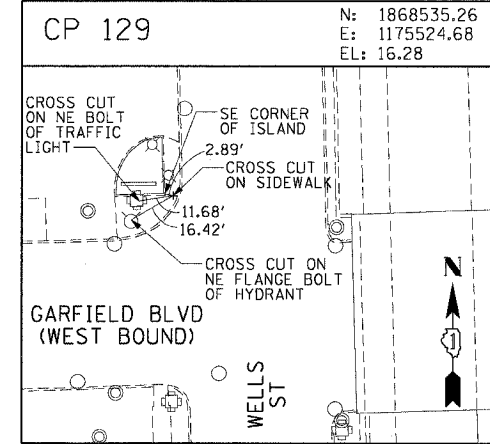
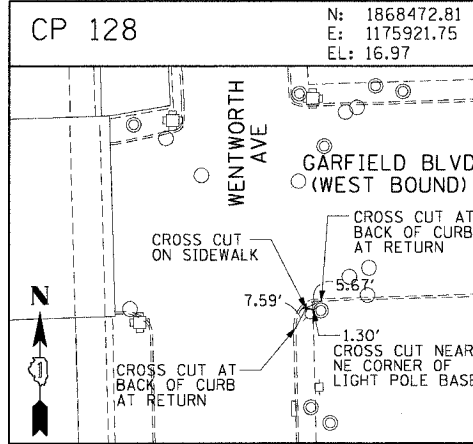
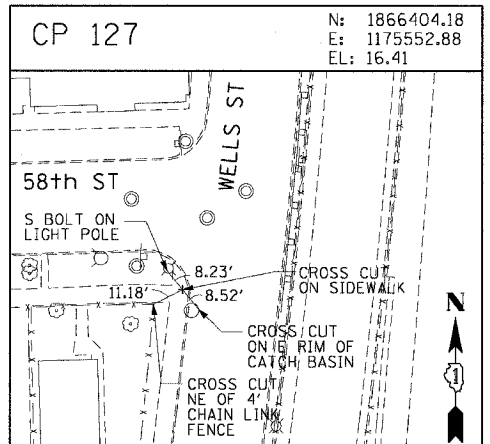
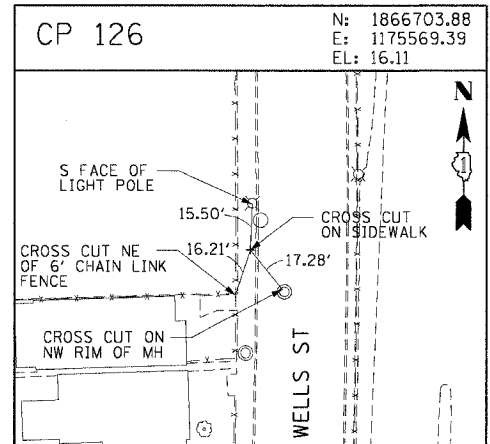
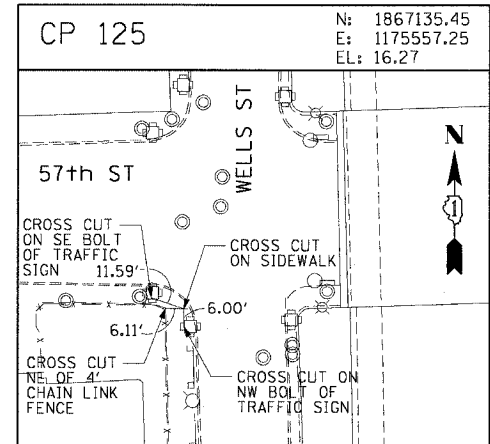
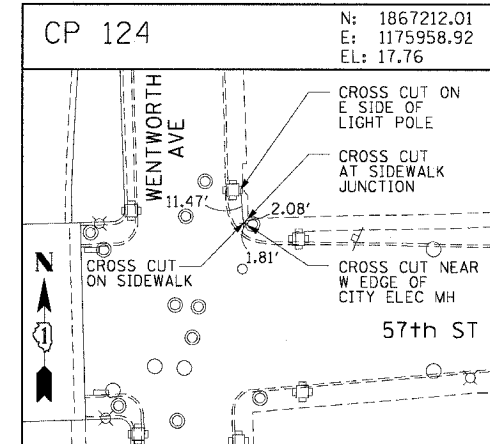
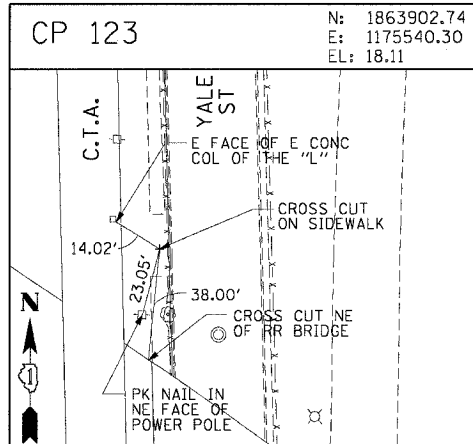
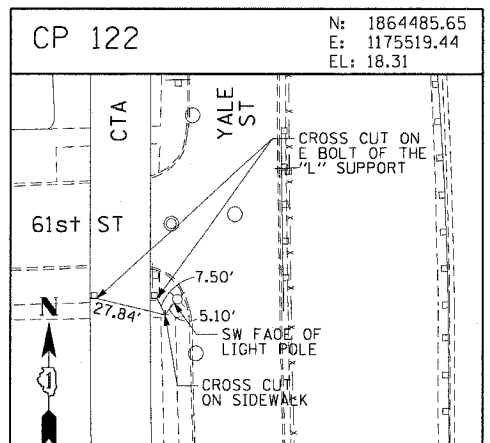
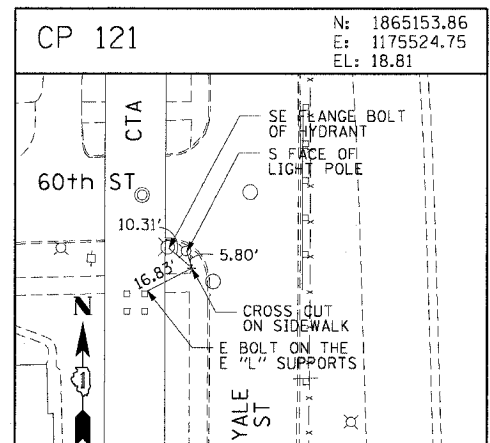
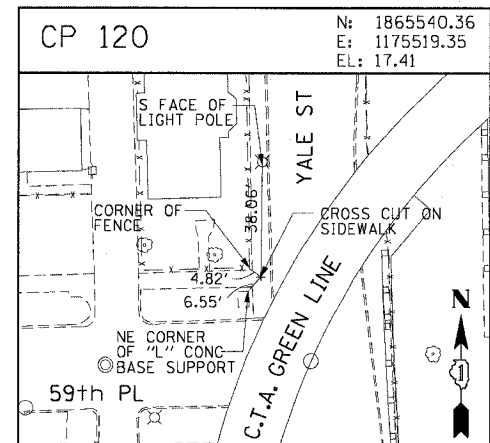
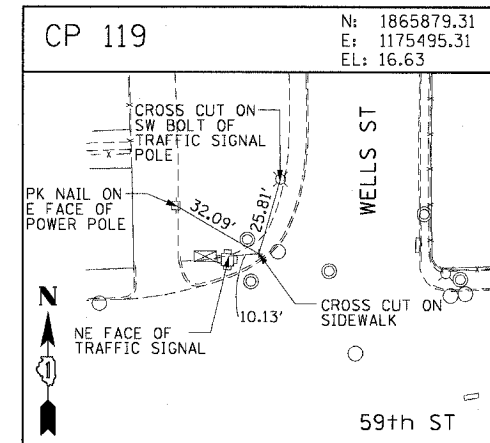
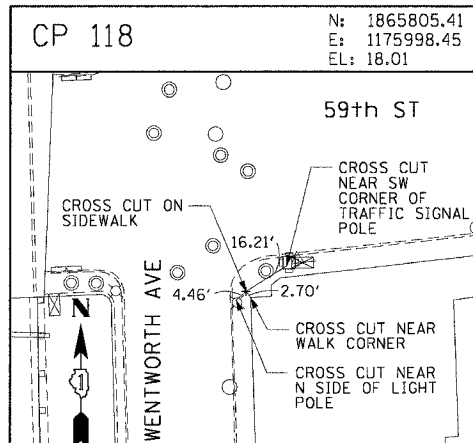


F.A.I. RTE.	SECTION	COUNTY	TOTAL SHEET NO.
90/94	2004-065TS	COOK	62 16
STA.	TO STA.		
FED. ROAD DIST. NO. 1 ILLINOIS FED. AID PROJECT			
62804			



REVISIONS	
NAME	DATE

ILLINOIS DEPARTMENT OF TRANSPORTATION  
F.A.I. 90/94 (DAN RYAN EXPRESSWAY)  
TRAFFIC SIGNALS AT 47TH STREET WITH  
WENTWORTH AVENUE - LASALLE STREET AND  
WELLS STREET - WENTWORTH AVENUE

**SURVEY TIES AND CONTROL POINTS**

SCALE: 1"=30'  
DATE: October 29, 2004

DRAWN BY: MRK  
CHECKED BY: JAL