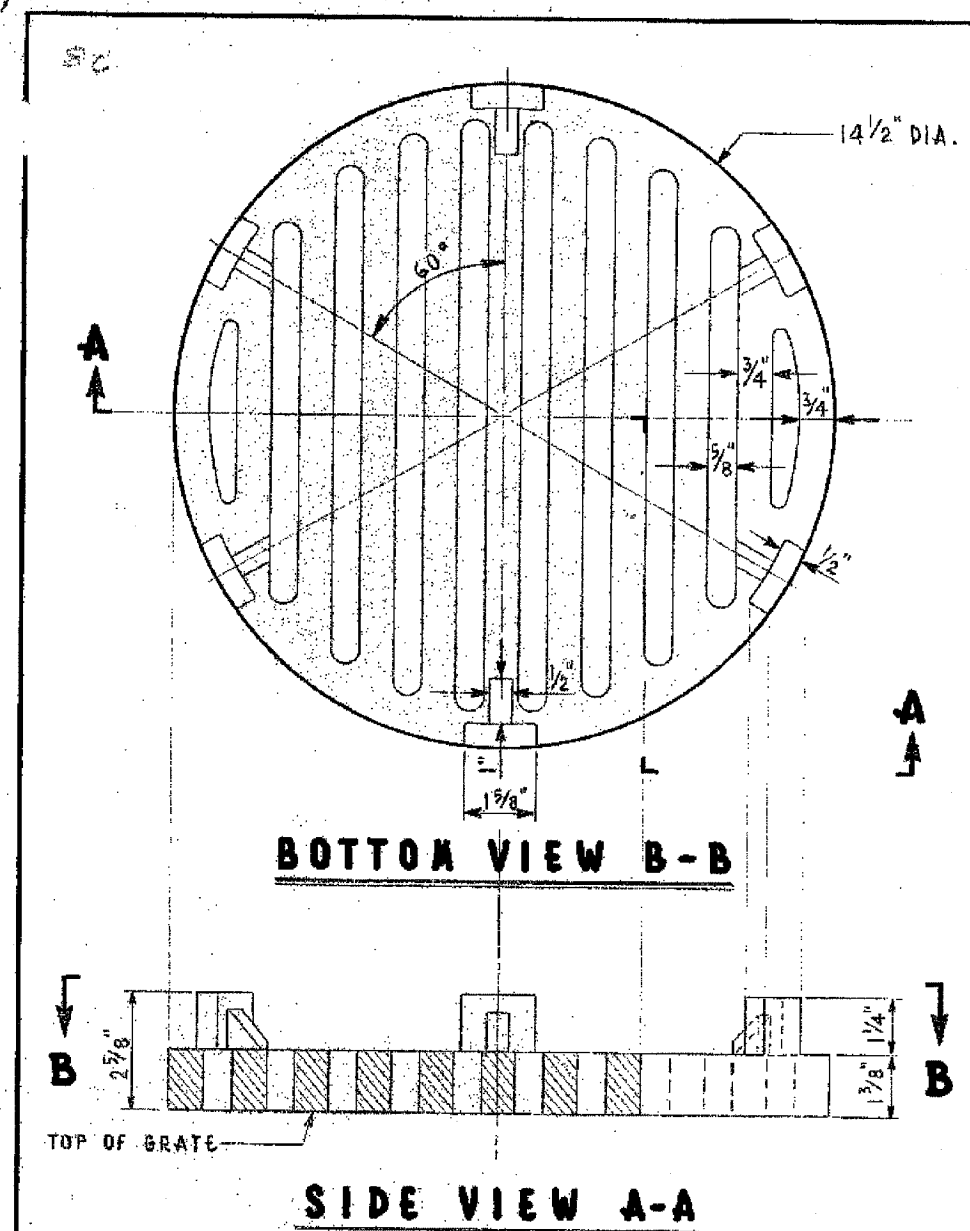


TOP VIEW

MATERIAL:

S.A.E. 1035 HOT ROLLED STEEL.
HOT GALVANIZED ZINC COATING
0.002 INCH THICK OVER ENTIRE
SURFACE.

REVISED		CITY OF CHICAGO		
RE-DRAWN		DEPT. OF STREETS AND SANITATION		
A 11-30-73		BUREAU OF ELECTRICITY		
B		DIVISION OF ELECTRICAL ENGINEERING		
C		DRAWN	CHECKED	ENGINEER
D		E. GERULIS	M. SHINE	J. O'CONNOR
E		ENG. ELEC.		DRG. NO.
F		Supt. of Eng.		7878
G		DATE 11-30-73		



BOTTOM VIEW B-B

SIDE VIEW A-A

MATERIAL: CAST IRON
APPROX. WT.: 34 LBS.

REVISED		CITY OF CHICAGO		
A 11-30-73		DEPT. OF STREETS AND SANITATION		
B		BUREAU OF ELECTRICITY		
C		DIVISION OF ELECTRICAL ENGINEERING		
D		DRAWN	CHECKED	ENGINEER
E		E. GERULIS	M. SHINE	J. O'CONNOR
F		ENG. ELEC.		DRG. NO.
G		Supt. of Eng.		10792
G		DATE 11-30-73		

REVISIONS	
NAME	DATE

ILLINOIS DEPARTMENT OF TRANSPORTATION
F.A.I. 90/94 (DAN RYAN EXPRESSWAY)
TRAFFIC SIGNALS AT 47TH STREET WITH
WENTWORTH AVENUE - LASALLE STREET AND
WELLS STREET - WENTWORTH AVENUE

BOE STANDARD DETAILS

SCALE: NOT TO SCALE
DATE: October 29, 2004
DRAWN BY: HAR
CHECKED BY: WDS