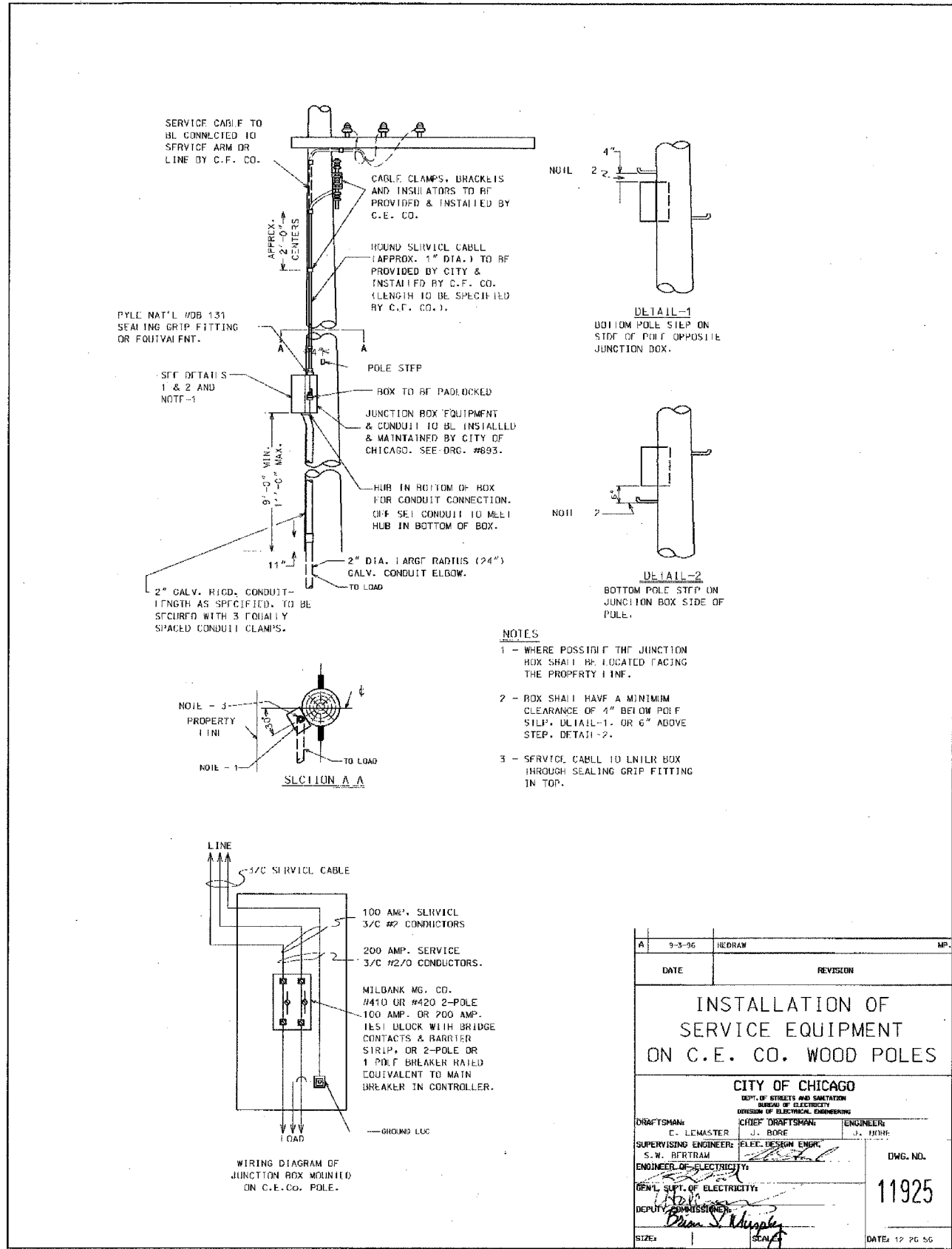
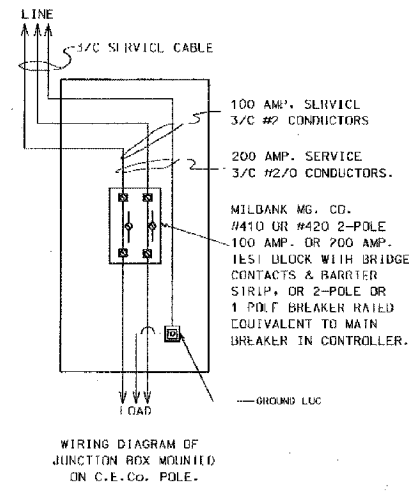
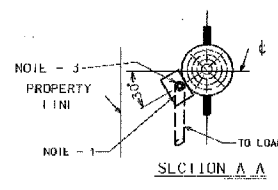


F.A.I. RTE.	SECTION	COUNTY	TOTAL SHEET NO.
90/94	2004-065TS	COOK	62 59
STA.	TO STA.		
FED. ROAD DIST. NO. 1	ILLINOIS	FED. AID PROJECT	

62804



- NOTES**
- 1 - WHERE POSSIBLE THE JUNCTION BOX SHALL BE LOCATED FACING THE PROPERTY LINE.
  - 2 - BOX SHALL HAVE A MINIMUM CLEARANCE OF 4" BELOW POLE STEP, DETAIL-1, OR 6" ABOVE STEP, DETAIL-2.
  - 3 - SERVICE CABLE TO ENTER BOX THROUGH SEALING GRIP FITTING IN TOP.



DATE	REVISION	MP.
9-5-96	REDRAW	
<b>INSTALLATION OF SERVICE EQUIPMENT ON C.E. CO. WOOD POLES</b>		
<b>CITY OF CHICAGO</b>		
<small>DEPT. OF STREETS AND SANITATION BUREAU OF ELECTRICITY DIVISION OF ELECTRICAL ENGINEERING</small>		
DRAFTSMAN: C. LEMASTER	CHIEF DRAFTSMAN: J. BORE	ENGINEER: J. MOHR
SUPERVISING ENGINEER: S.W. BERTRAM	ELEC. DESIGN ENGR. <i>[Signature]</i>	
ENGINEER OF ELECTRICITY: <i>[Signature]</i>		DWG. NO. <b>11925</b>
DEPT. COMMISSIONER: <i>[Signature]</i>		DATE: 12 PG 96

REVISIONS	
NAME	DATE

BOE-42

ILLINOIS DEPARTMENT OF TRANSPORTATION  
F.A.I. 90/94 (DAN RYAN EXPRESSWAY)  
TRAFFIC SIGNALS AT 47TH STREET WITH  
WENTWORTH AVENUE - LASALLE STREET AND  
WELLS STREET - WENTWORTH AVENUE

**BOE STANDARD DETAILS**

SCALE: NOT TO SCALE  
DATE: October 29, 2004

DRAWN BY: HAR  
CHECKED BY: WDS

m:\p40468\elect\p40468\contract\9610\boe\BOE-42.dwg

10/27/2004 08:56:30 AM