

F.A.I. RTE.	SECTION	COUNTY	TOTAL SHEETS	SHEET NO.
90/94	2004-075RS	COOK	65	1

62814

D-91-419-01

STATE OF ILLINOIS
DEPARTMENT OF TRANSPORTATION
DIVISION OF HIGHWAYS

PLANS FOR PROPOSED
FEDERAL AID HIGHWAY

F.A.I. ROUTE 90/94 (DAN RYAN EXPRESSWAY)
SECTION 2004-075RS
PROJECT: IM-094-3(376)058
INSTALLATION OF SEWER AND PAVING ALONG WENTWORTH AVENUE
FROM NORTH OF 59TH STREET TO SOUTH OF 57TH STREET
COOK COUNTY
C-91-299-04

INDEX OF SHEETS
FOR INDEX OF SHEETS, SEE SHEET NO. 2

IDOT HIGHWAY STANDARDS
FOR IDOT HIGHWAY STANDARDS,
SEE SHEET NO. 2

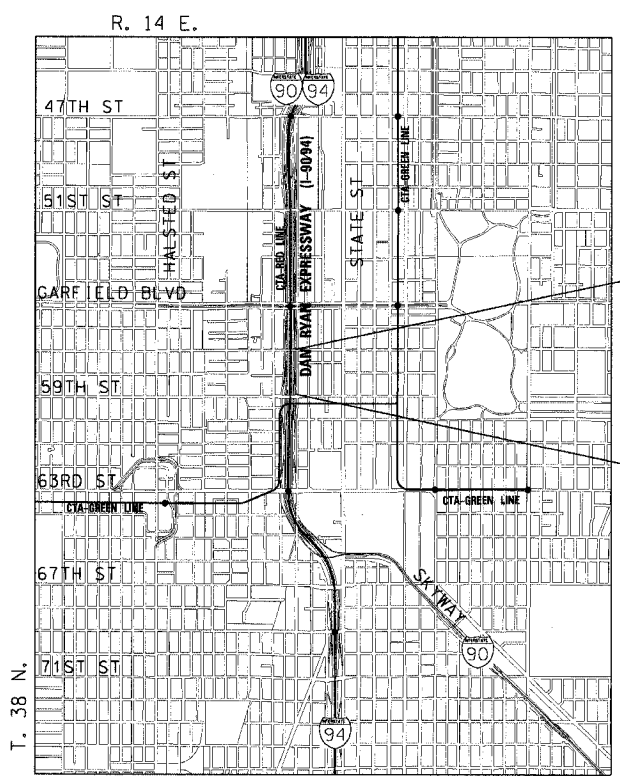
PROJECT LOCATED IN CITY OF CHICAGO



DESIGN DESIGNATION

WENTWORTH AVE: 6259 (20) URBAN COLLECTOR

ADT (2020)	DESIGN SPEED	POSTED SPEED
11,000	30	25



PROJECT ENDS
WENTWORTH AVE
STA 143+68.47

PROJECT BEGINS
WENTWORTH AVE
STA 131+93.21

JOHN ALLEN LUKOWSKI
062-053522
REGISTERED
PROFESSIONAL
ENGINEER
OF
ILLINOIS

John A. Lukowski
JOHN A. LUKOWSKI
1-65
SHEET NOS.

11-30-05
EXPIRES
10-29-07
DATE

STATE OF ILLINOIS
DEPARTMENT OF TRANSPORTATION
DIVISION OF HIGHWAYS

SUBMITTED November 5, 20 04

Diana O'Hara / AP
DISTRICT ENGINEER

December 10, 20 04
Mike Fine / RD
ENGINEER OF DESIGN AND ENVIRONMENT

December 10, 20 04
Victor Moders / RD
DIRECTOR, DIVISION OF HIGHWAYS

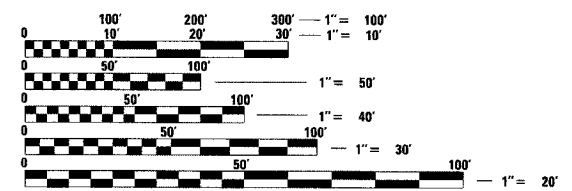
PRINTED BY THE AUTHORITY
OF THE STATE OF ILLINOIS

CTE ENGINEERS
CONSOER TOWNSEND ENVIRODYNE ENGINEERS, INC.
303 EAST WACKER DRIVE, SUITE 600
CHICAGO ILLINOIS 60601-5212, PHONE: (312) 938-0300

LOCATION MAP

0 1/2 MILE 1 MILE
1" = 1/2 MILE

GROSS LENGTH OF PROJECT = 1,175 FT (0.223 MILE)
NET LENGTH OF PROJECT = 1,175 FT (0.223 MILE)



FULL SIZE PLANS HAVE BEEN PREPARED USING STANDARD ENGINEERING SCALES. REDUCED SIZED PLANS WILL NOT CONFORM TO STANDARD SCALES. IN MAKING MEASUREMENTS ON REDUCED PLANS, THE ABOVE SCALES MAY BE USED.

DIGGER:
CHICAGO UTILITY ALERT NETWORK
(312) 744-7000

CONTRACT NO. 62814

DISTRICT ONE DESIGN/CONSULTANT SERVICES PROJECT MANAGER
RAJENDRA SHAH (847) 705-4437