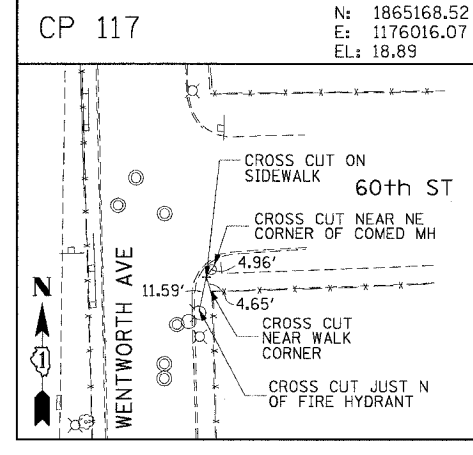
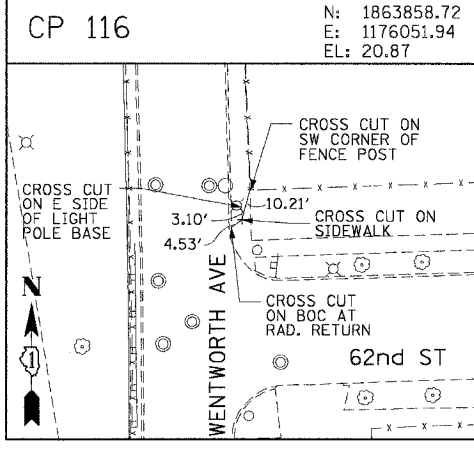
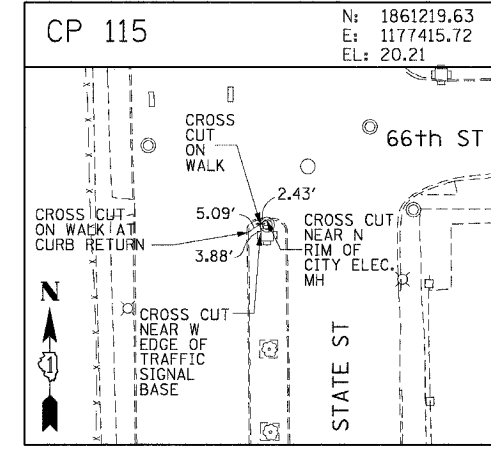
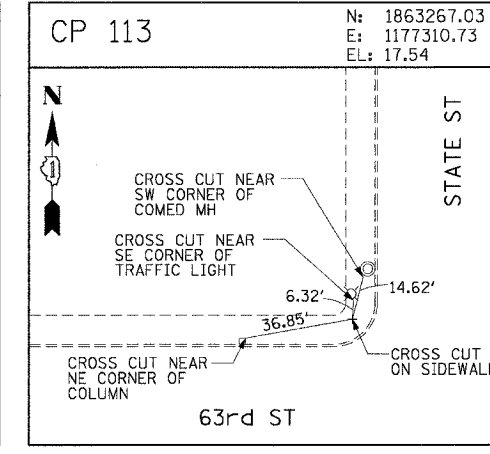
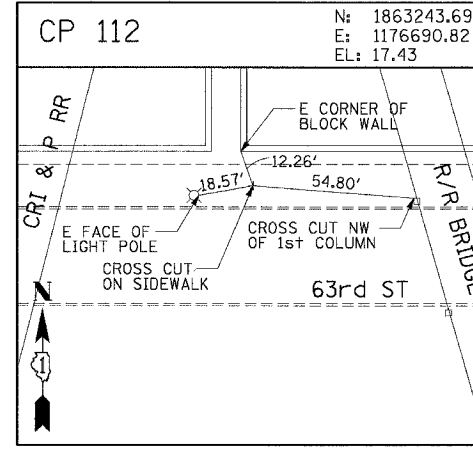
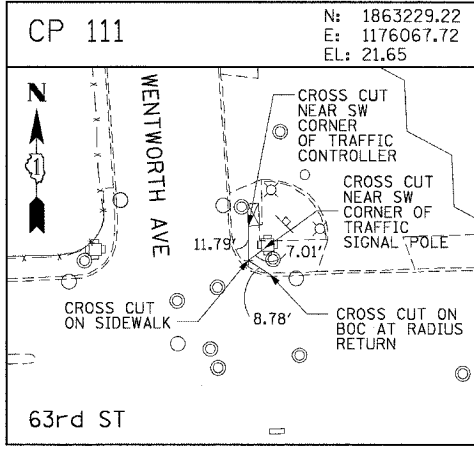
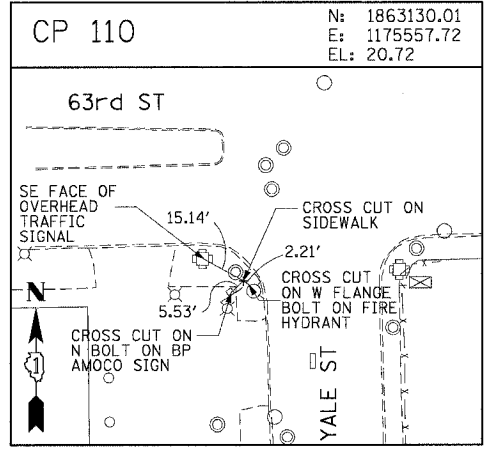
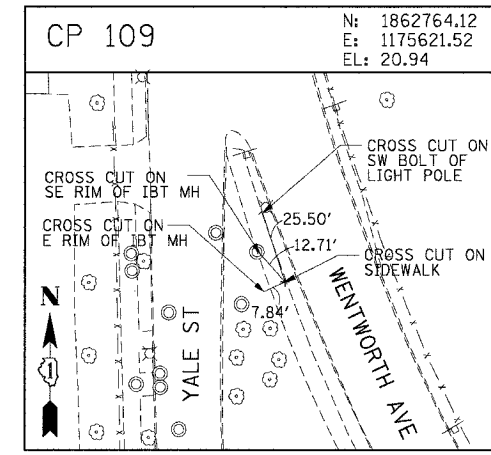
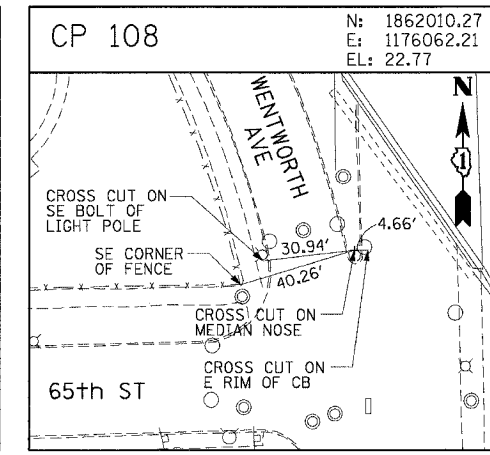
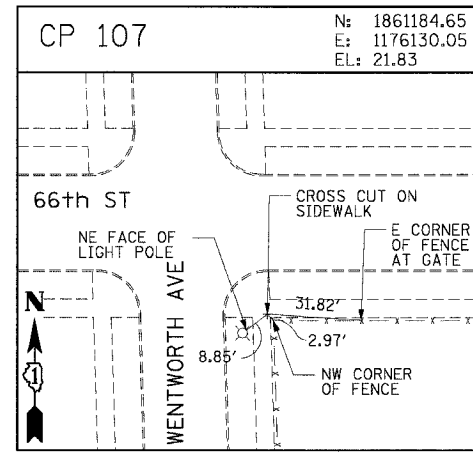
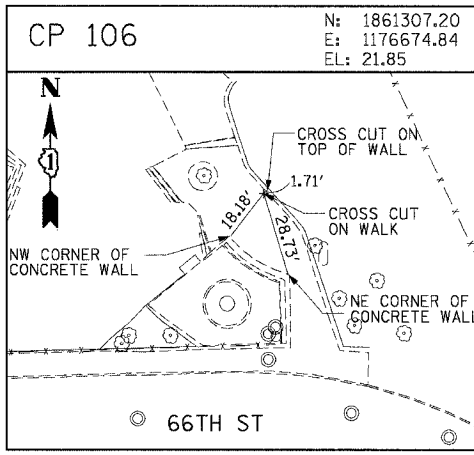
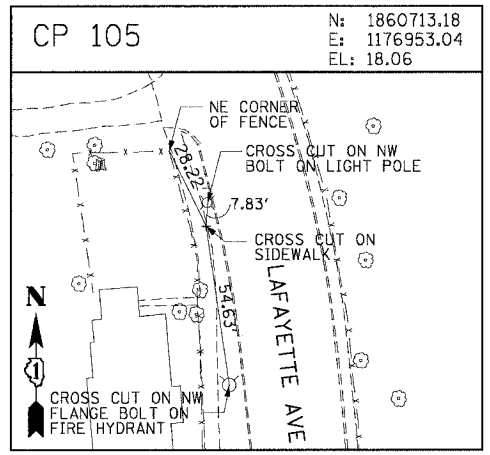
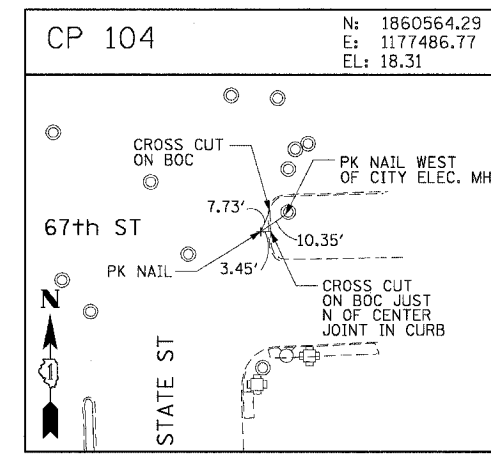
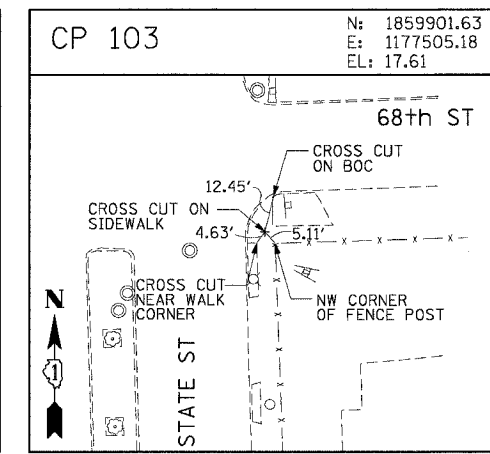
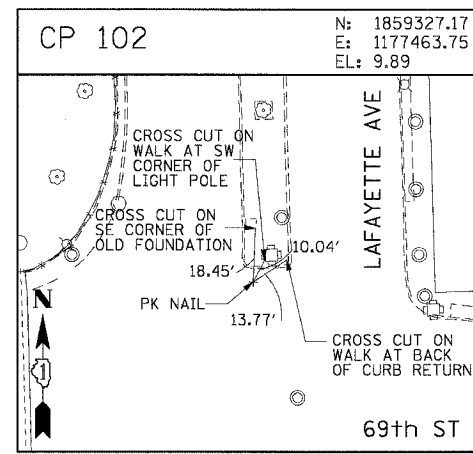
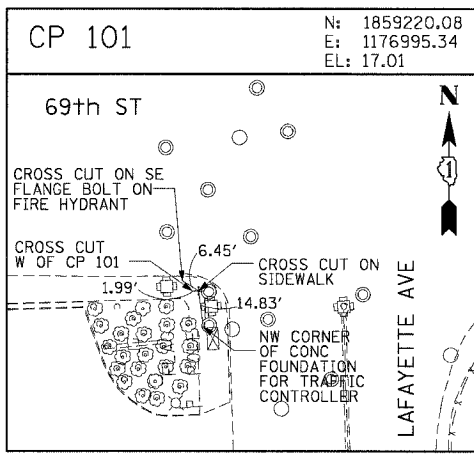
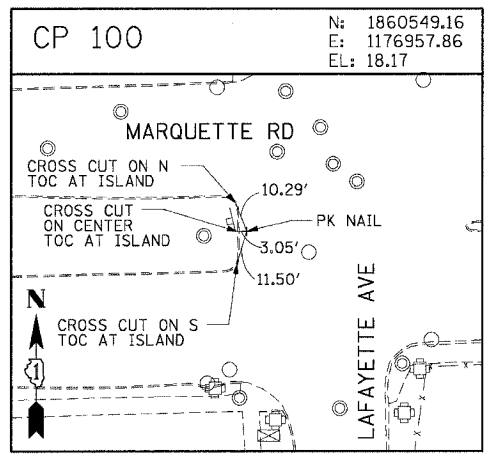


F.A.I. RTE.	SECTION	COUNTY	TOTAL SHEETS	SHEET NO.
90/94	2004-075RS	COOK	65	20
STA.		TO STA.		
FED. ROAD DIST. NO. 1 ILLINOIS FED. AID PROJECT				
62814				



REVISIONS	
NAME	DATE

ILLINOIS DEPARTMENT OF TRANSPORTATION  
F.A.I. 90/94 (DAN RYAN EXPRESSWAY)  
59th ST TO 57th ST (WENTWORTH AVENUE)  
SURVEY TIES AND CONTROL POINTS

SCALE: 1"=30'  
DATE: OCTOBER 29, 2004

DRAWN BY: MRK  
CHECKED BY: JAL

m:\p40465\cvt\1\4\cvt9\add\_cvt\9920\sp\align\mvt\9920\0102a.dwg 08/46/30 AM 10/21/2004