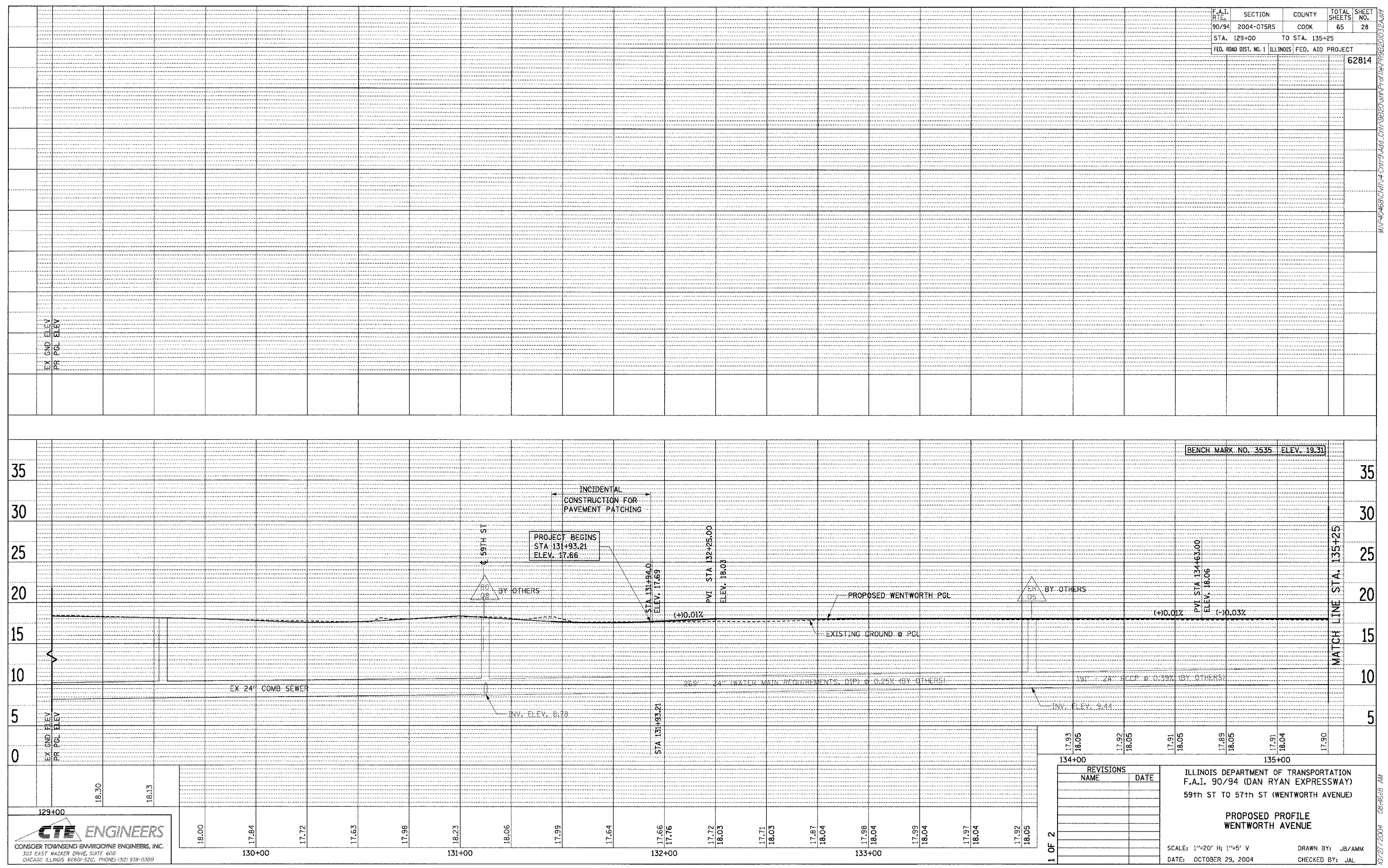


F.A.I. RTE.	SECTION	COUNTY	TOTAL SHEETS	SHEET NO.
90/94	2004-075RS	COOK	65	28
STA. 129+00		TO STA. 135+25		
FED. ROAD DIST. NO. 1	ILLINOIS	FED. AID PROJECT		
		62814		

PLAN	SURVEYED	BY	DATE
	PLANNED		
	NOTED		
	NOTED		
	NOTED		

PLAN	SURVEYED	BY	DATE
	PLANNED		
	NOTED		
	NOTED		
	NOTED		



CTE ENGINEERS
 CONSOER TOWNSEND ENVIRONMENTAL ENGINEERS, INC.
 303 EAST WACKER DRIVE, SUITE 600
 CHICAGO, ILLINOIS 60601-5212, PHONE: (312) 938-0300

REVISIONS	
NAME	DATE

ILLINOIS DEPARTMENT OF TRANSPORTATION
 F.A.I. 90/94 (DAN RYAN EXPRESSWAY)
 59th ST TO 57th ST (WENTWORTH AVENUE)

PROPOSED PROFILE WENTWORTH AVENUE

SCALE: 1"=20' H; 1"=5' V
 DATE: OCTOBER 29, 2004

DRAWN BY: JB/AMM
 CHECKED BY: JAL

10/27/2004 08:46:18 AM