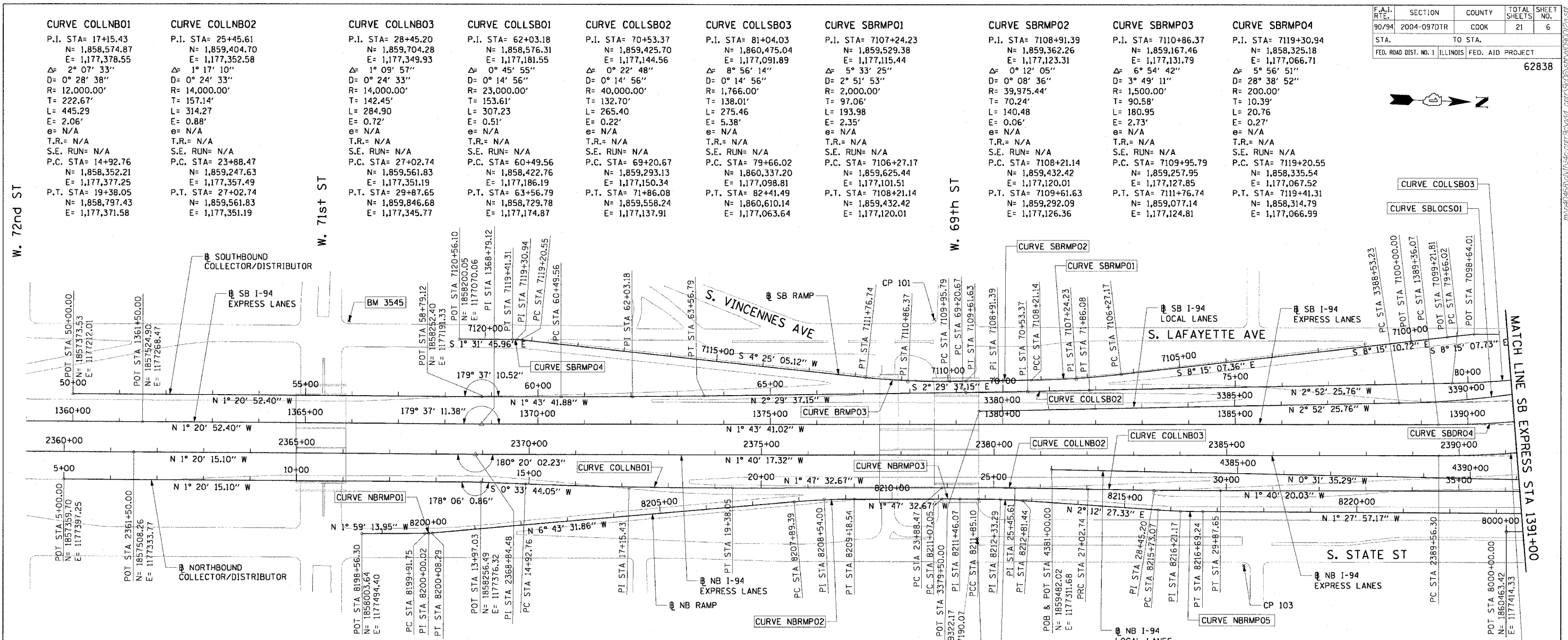
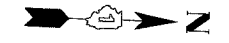


F.A.I. SECTION	COUNTY	TOTAL SHEETS	SHEET NO.
90/94 2004-097DR	COOK	21	6
TO STA.			
FED. ROAD DIST. NO. 1 ILLINOIS FED. AID PROJECT			

62838



- BENCH MARK NO. 3528 ELEV. 16.20**
DESCRIPTION: CROSS CUT ON NORTHWESTERLY BOLT OF FIRE HYDRANT AT THE NORTHWEST CORNER OF 45TH ST AND WENTWORTH AVE
- BENCH MARK NO. 3530 ELEV. 18.18**
DESCRIPTION: CROSS CUT ON SOUTHEAST BOLT OF LIGHT POLE BASE AT THE NORTHWEST CORNER OF 51ST ST AND WELLS ST
- BENCH MARK NO. 3531 ELEV. 17.55**
DESCRIPTION: CROSS CUT ON NORTHEASTERLY FLANGE BOLT OF FIRE HYDRANT AT THE NORTHEAST CORNER OF GARFIELD BLVD AND WELLS ST
- BENCH MARK NO. 3532 ELEV. 18.84**
DESCRIPTION: HORIZONTAL BOLT ON CTA "EL" STRUCTURE, EAST SIDE OF WELLS ST ABOUT 50 FEET NORTH OF 59TH PL.
- BENCH MARK NO. 3533 ELEV. 19.71**
DESCRIPTION: BRASS DISK (CTA MONUMENT) AT THE SOUTHWEST CORNER OF 63RD ST AND HARVARD ST

- BENCH MARK NO. 3535 ELEV. 19.31**
DESCRIPTION: FOUND CROSS CUT ON SOUTHERLY FLANGE BOLT OF FIRE HYDRANT AT THE NORTHEAST CORNER OF 59TH ST AND WENTWORTH AVE
- BENCH MARK NO. 3536 ELEV. 18.37**
DESCRIPTION: CROSS CUT ON SOUTHEASTERLY FLANGE BOLT OF FIRE HYDRANT AT THE SOUTHEAST CORNER OF GARFIELD BLVD AND WENTWORTH AVE
- BENCH MARK NO. 3537 ELEV. 17.71**
DESCRIPTION: CROSS CUT ON NORTHEASTERLY FLANGE BOLT OF FIRE HYDRANT AT THE NORTHEAST CORNER OF 51ST ST AND WENTWORTH AVE
- BENCH MARK NO. 3538 ELEV. 17.31**
DESCRIPTION: CROSS CUT ON EASTERLY FLANGE BOLT OF FIRE HYDRANT AT THE NORTHEAST CORNER OF 47TH ST AND LASALLE ST
- BENCH MARK NO. 3544 ELEV. 19.38**
DESCRIPTION: CROSS CUT ON WESTERLY FLANGE BOLT OF FIRE HYDRANT AT THE NORTHWEST CORNER OF 67TH ST AND LAFAYETTE AVE
- BENCH MARK NO. 3545 ELEV. 10.53**
DESCRIPTION: CROSS CUT ON NORTHWEST BOLT OF LIGHT POLE BASE AT THE NORTHWEST CORNER OF 71ST ST AND LAFAYETTE AVE

- | | | | | | |
|---|--|--|--|--|---|
| CURVE NBRMPO1
P.I. STA= 8200+00.02
N= 1,858,147.27
E= 1,177,489.42
Δ= 4° 44' 18"
D= 28° 38' 52"
R= 200.00'
T= 8.27'
L= 16.54
E= 0.17'
e= N/A
T.R.= N/A
S.E. RUN= N/A
P.C. STA= 8199+91.75
N= 1,858,139.01
E= 1,177,489.70
P.T. STA= 8200+08.29
N= 1,858,155.49
E= 1,177,488.45 | CURVE NBRMPO2
P.I. STA= 8208+54.00
N= 1,858,995.39
E= 1,177,389.40
Δ= 4° 55' 59"
D= 3° 49' 11"
R= 1,500.00'
T= 64.61'
L= 129.15
E= 1.39'
e= N/A
T.R.= N/A
S.E. RUN= N/A
P.C. STA= 8207+89.39
N= 1,858,931.22
E= 1,177,396.97
P.T. STA= 8209+18.54
N= 1,859,059.97
E= 1,177,387.38 | CURVE NBRMPO3
P.I. STA= 8211+46.07
N= 1,859,287.39
E= 1,177,380.27
Δ= 0° 19' 12"
D= 0° 24' 36"
R= 13,976.00'
T= 39.03'
L= 78.05
E= 0.05'
e= N/A
T.R.= N/A
S.E. RUN= N/A
P.C. STA= 8211+07.05
N= 1,859,248.39
E= 1,177,381.49
P.T. STA= 8211+85.10
N= 1,859,326.41
E= 1,177,379.26 | CURVE NBRMPO4
P.I. STA= 8212+33.29
N= 1,859,374.58
E= 1,177,378.02
Δ= 3° 40' 48"
D= 3° 49' 11"
R= 1,500.00'
T= 48.10'
L= 96.17'
E= 0.77'
e= N/A
T.R.= N/A
S.E. RUN= N/A
P.C. STA= 8211+85.10
N= 1,859,326.41
E= 1,177,379.26
P.T. STA= 8212+81.44
N= 1,859,422.73
E= 1,177,379.88 | CURVE NBRMPO5
P.I. STA= 8216+21.17
N= 1,859,762.21
E= 1,177,392.97
Δ= 3° 40' 25"
D= 3° 49' 11"
R= 1,500.00'
T= 48.10'
L= 96.17'
E= 0.77'
e= N/A
T.R.= N/A
S.E. RUN= N/A
P.C. STA= 8215+73.07
N= 1,859,714.14
E= 1,177,391.11
P.T. STA= 8216+69.24
N= 1,859,810.29
E= 1,177,391.74 | CURVE SBLOCS01
P.I. STA= 3391+35.61
N= 1,860,506.29
E= 1,177,130.62
Δ= 15° 38' 54"
D= 2° 47' 17"
R= 2,055.00'
T= 282.39'
L= 561.26'
E= 19.31'
e= 5.5'
T.R.= 41'
S.E. RUN= 196'
P.C. STA= 3388+53.23
N= 1,860,224.26
E= 1,177,144.78
P.T. STA= 3394+14.48
N= 1,860,774.05
E= 1,177,040.92 |
|---|--|--|--|--|---|

NOTES:
1. AVERAGE GRID TO GROUND CONVERSION FACTOR = 1.000010988654360

REVISIONS	
NAME	DATE

ILLINOIS DEPARTMENT OF TRANSPORTATION
F.A.I. 90/94 (DAN RYAN EXPRESSWAY)
63rd ST TO 59th ST (TREE REMOVAL)

ALIGNMENT PLAN

SCALE: 1"=100'
DATE: October 22, 2004

DRAWN BY: NJH/AMM
CHECKED BY: JAL/MS

