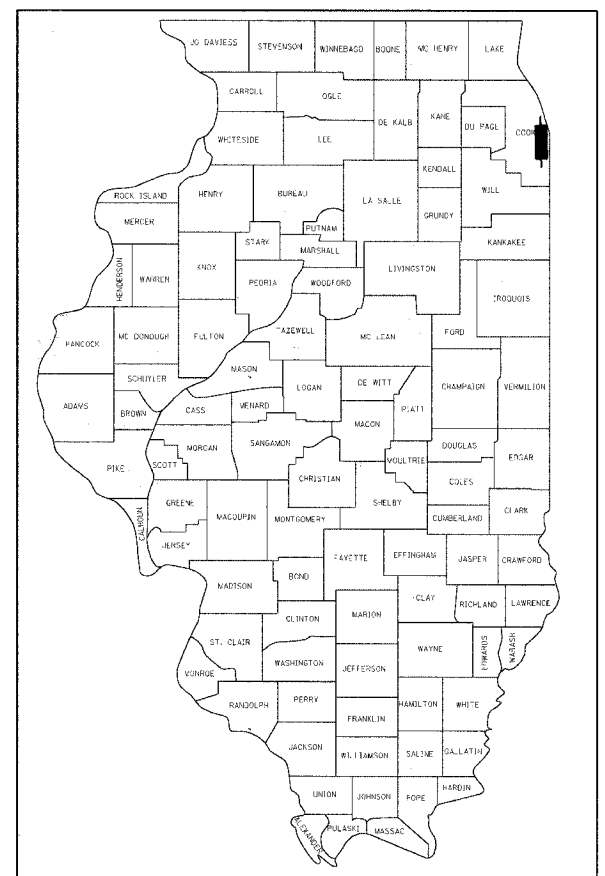


F.A.I. RTE.	SECTION	COUNTY	TOTAL SHEETS	SHEET NO.
90/94	2004-099TS	COOK	65	1

D-91-419-01



LOCATION OF SECTION INDICATED THUS: - ■ -

STATE OF ILLINOIS  
DEPARTMENT OF TRANSPORTATION  
DIVISION OF HIGHWAYS

SUBMITTED November 19, 20 04  
Dina O'Keefe / AP  
DISTRICT ENGINEER

December 18, 20 04  
Mike Hine / RD  
ENGINEER OF DESIGN AND ENVIRONMENT

December 10, 20 04  
Victor Maden / RD  
DIRECTOR, DIVISION OF HIGHWAYS

PRINTED BY THE AUTHORITY  
OF THE STATE OF ILLINOIS



STATE OF ILLINOIS  
DEPARTMENT OF TRANSPORTATION  
DIVISION OF HIGHWAYS

PLANS FOR PROPOSED  
FEDERAL AID HIGHWAY

F.A.I. ROUTE 90/94 (DAN RYAN EXPRESSWAY)  
SECTION 2004-099TS  
PROJECT: IM-094-3 (370)058  
TRAFFIC SIGNALS AT 63RD STREET AND  
WENTWORTH AVENUE /WELLS STREET  
COOK COUNTY  
C-91-364-04

INDEX OF SHEETS

SHEET	DESCRIPTION
1	COVER SHEET
2	GENERAL NOTES AND PROJECT COMMITMENTS
3-4	SUGGESTED CONSTRUCTION SCHEDULE
5	SUMMARY OF QUANTITIES
6-16	ALIGNMENT PLANS, SURVEY TIES AND CONTROL POINTS
17	TRAFFIC CONTROL SIGNALS BILL OF MATERIALS, INDEX OF STANDARD DRAWINGS AND TRAFFIC SIGNAL NOTES
18-19	TEMPORARY TRAFFIC SIGNAL INSTALLATION
20-21	SUGGESTED STAGES OF CONSTRUCTION AND TRAFFIC CONTROL (FOR INFORMATION ONLY)
22-24	TRAFFIC CONTROL SIGNAL PLANS
25	CDOT ELECTRICAL GENERAL NOTES
26	CDOT ELECTRICAL SYMBOLS AND ABBREVIATIONS
27	63RD STREET BRIDGE EXISTING CONDITIONS, DEMOLITION, AND TEMPORARY LIGHTING PLAN
28	63RD STREET BRIDGE ROADWAY LIGHTING IMPROVEMENTS
29	MISCELLANEOUS ELECTRICAL DETAILS
30	TEMPORARY LIGHTING DETAILS
31-64	BOE STANDARD DETAILS
65	TEMPORARY INFORMATION SIGNING

IDOT HIGHWAY STANDARDS

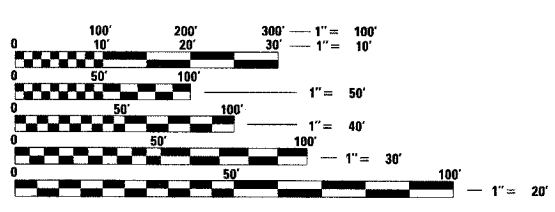
STANDARD	DESCRIPTION
000001-04	STANDARD SYMBOLS, ABBREVIATIONS, AND PATTERNS
001006	DECIMAL OF AN INCH AND OF A FOOT
701701-04	URBAN LANE CLOSURE MULTILANE INTERSECTION
701801-03	LANE CLOSURE MULTILANE 1W OR 2W CROSSWALK OR SIDEWALK CLOSURE
702001-05	TRAFFIC CONTROL DEVICES

PROJECT LOCATED IN CITY OF CHICAGO

DESIGN DESIGNATION

WENTWORTH AVE: 6259 (20) URBAN COLLECTOR  
WELLS ST: 8275 (20) URBAN COLLECTOR

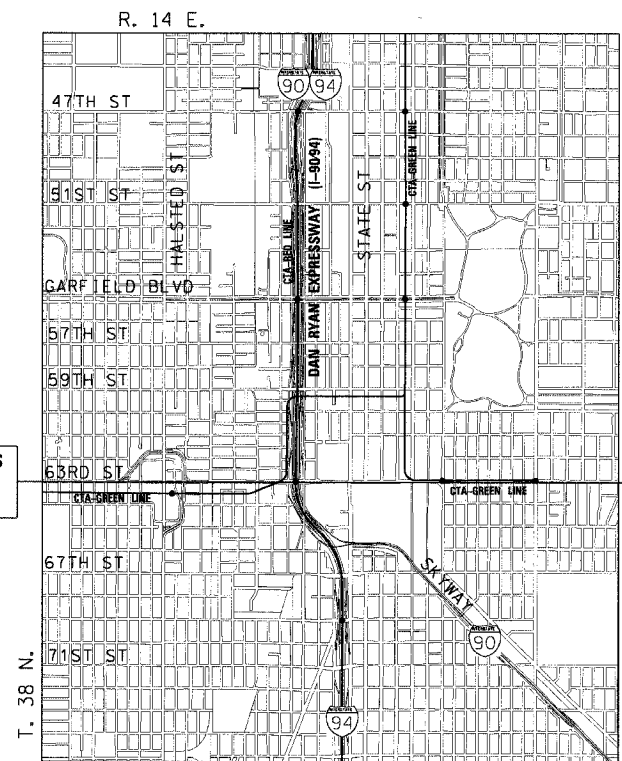
FRONTAGE ROADS:	ADT	DESIGN SPEED	POSTED SPEED
WENTWORTH AVE	11,000	30	25
WELLS ST	15,000	30	25



FULL SIZE PLANS HAVE BEEN PREPARED USING STANDARD ENGINEERING SCALES. REDUCED SIZED PLANS WILL NOT CONFORM TO STANDARD SCALES. IN MAKING MEASUREMENTS ON REDUCED PLANS, THE ABOVE SCALES MAY BE USED.

DIGGER:  
CHICAGO UTILITY ALERT NETWORK  
(312) 744-7000

CONTRACT NO. 62840

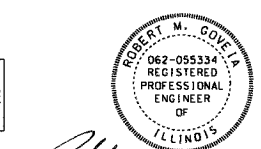


PROJECT BEGINS  
WELLS ST  
85' W. OF BL

PROJECT ENDS  
WENTWORTH AVE  
35' E. OF BL

LOCATION MAP

GROSS LENGTH OF PROJECT = 570 FT (0.108 MILES)  
NET LENGTH OF PROJECT = 570 FT (0.108 MILES)



ROBERT M. GOVEIA  
1-24  
SHEET NOS.

11/30/05  
EXPIRES  
11/05/04  
DATE



JAMES P. COLEMAN  
25-30  
SHEET NOS.

11/30/05  
EXPIRES  
11/08/04  
DATE

DISTRICT ONE DESIGN/CONSULTANT SERVICES PROJECT MANAGER  
R. SHAH (847) 705-4437