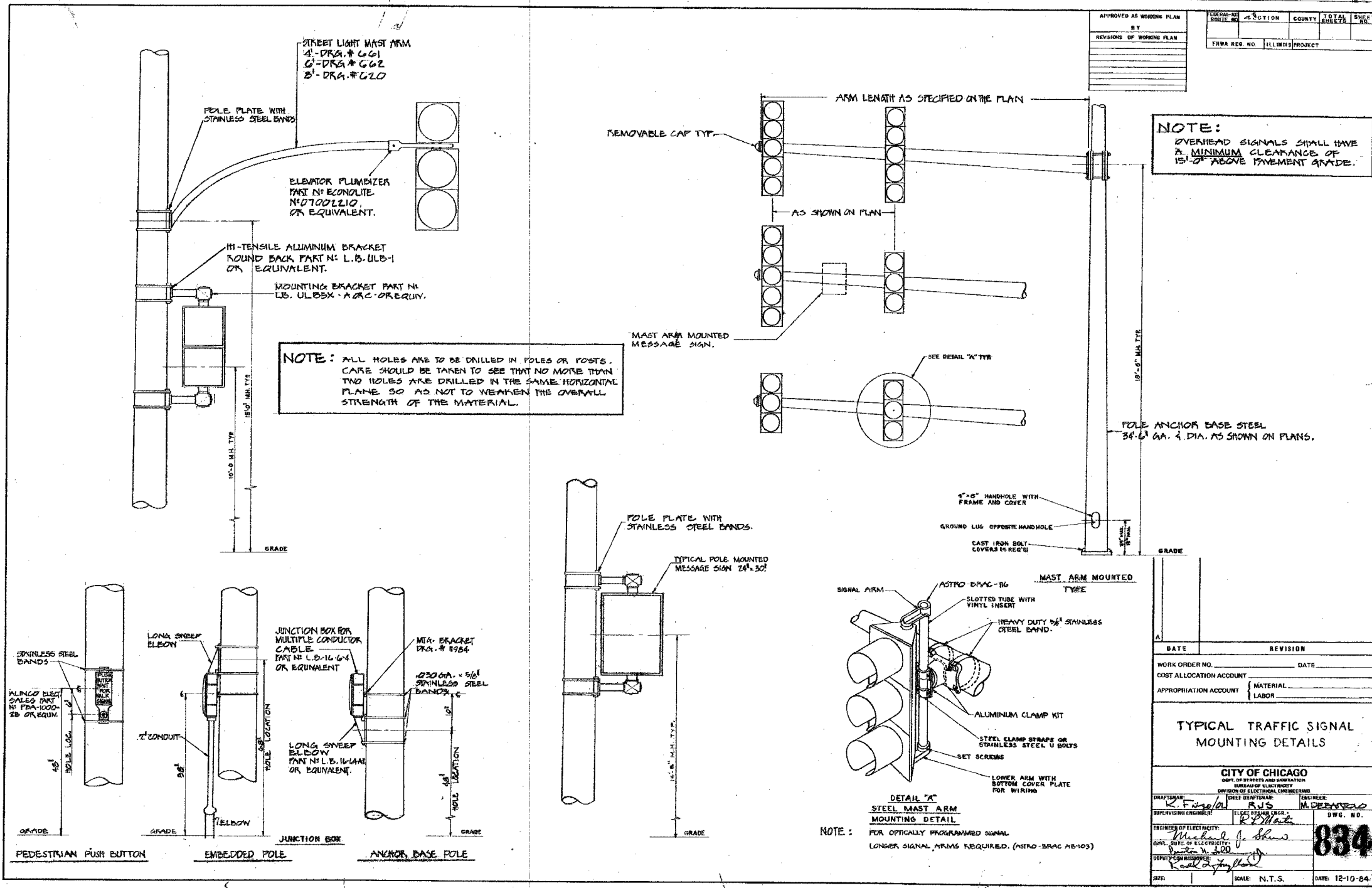


APPROVED AS WORKING PLAN	FEDERAL-AID PROJECT NO.	SECTION	COUNTY	TOTAL SHEETS	SHEET NO.
BY	FWA REG. NO.	ILLINOIS PROJECT			
REVISIONS OF WORKING PLAN					



**NOTE:** ALL HOLES ARE TO BE DRILLED IN POLES OR POSTS. CARE SHOULD BE TAKEN TO SEE THAT NO MORE THAN TWO HOLES ARE DRILLED IN THE SAME HORIZONTAL PLANE SO AS NOT TO WEAKEN THE OVERALL STRENGTH OF THE MATERIAL.

**NOTE:** OVERHEAD SIGNALS SHALL HAVE A MINIMUM CLEARANCE OF 15'-0" ABOVE PAVEMENT GRADE.

**NOTE:** FOR OPTICALLY PROGRAMMED SIGNAL LONGER SIGNAL ARMS REQUIRED. (ASTRO-BRAC 18-103)

DATE	REVISION
WORK ORDER NO.	DATE
COST ALLOCATION ACCOUNT	
APPROPRIATION ACCOUNT	MATERIAL
	LABOR
<b>TYPICAL TRAFFIC SIGNAL MOUNTING DETAILS</b>	
<b>CITY OF CHICAGO</b> DEPT. OF STREETS AND SANITATION BUREAU OF ELECTRICITY	
DRAFTSMAN: <i>K. F. ...</i>	DESIGNER: <i>M. DEAN ...</i>
SUPERVISOR: <i>R. J. ...</i>	DATE: <i>12-10-84</i>
ENGINEER OF ELECTRICITY: <i>Michael J. Shaw</i>	DWG. NO. <b>834</b>
DATE: <i>12-10-84</i>	SCALE: N.T.S.
DATE: 12-10-84	

REVISIONS	
NAME	DATE

17/04/2004 09:02:24 AM