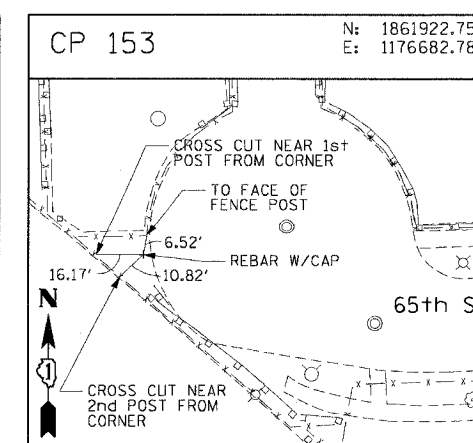
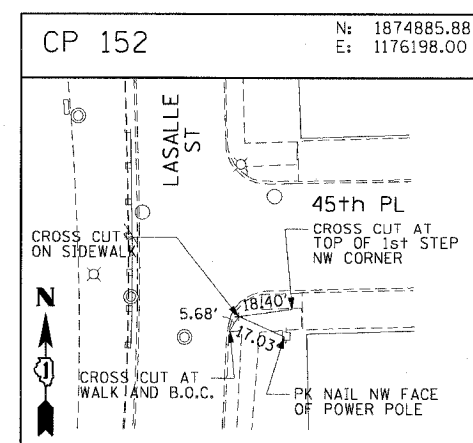
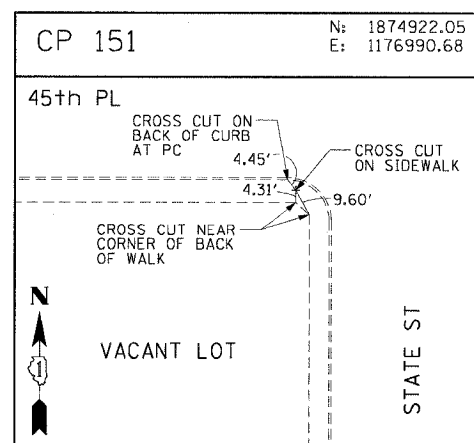
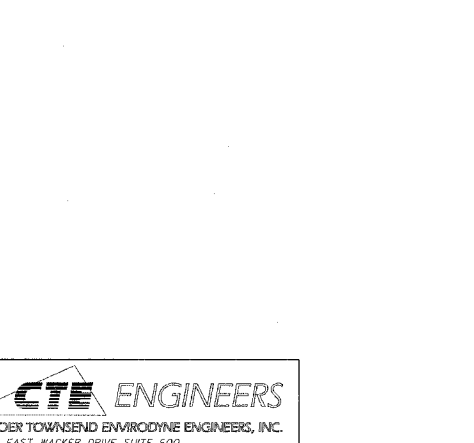
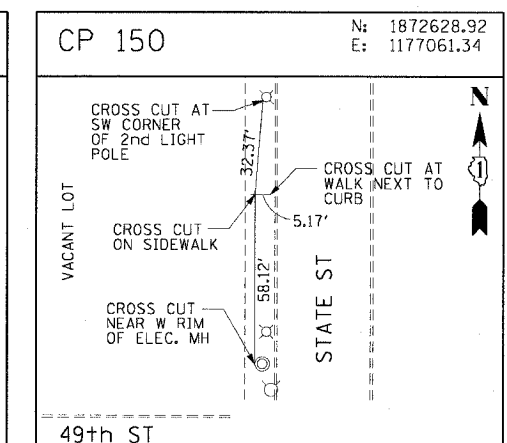
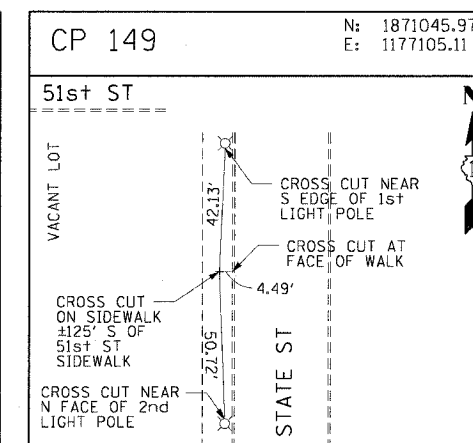
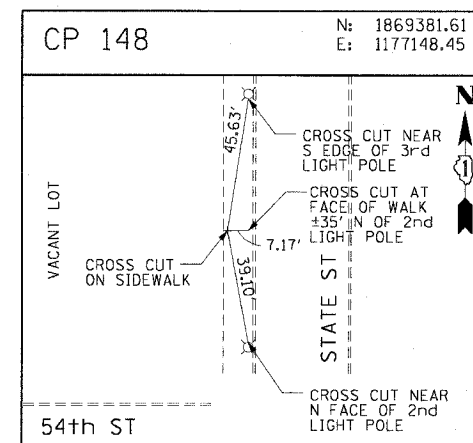
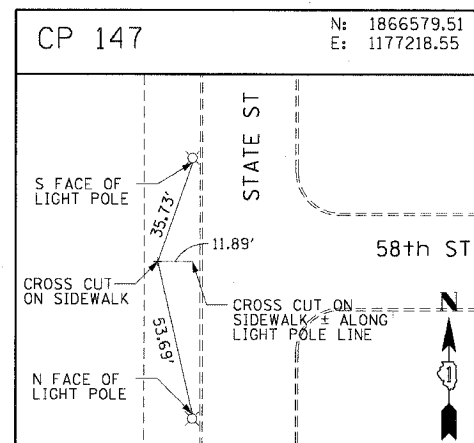
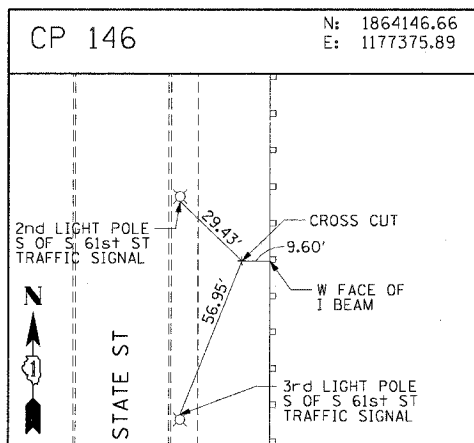
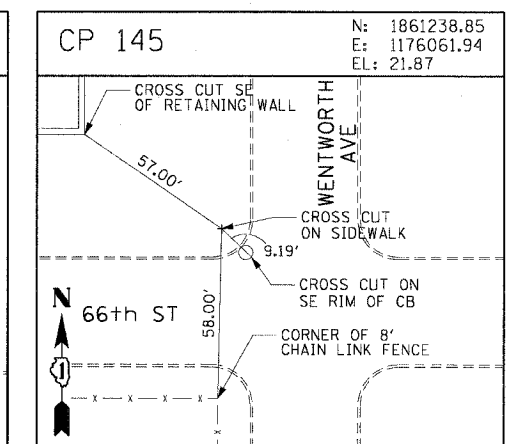
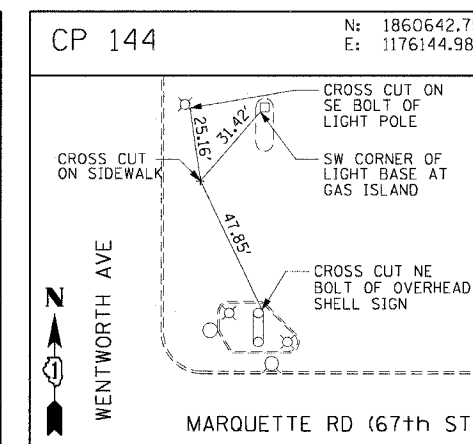
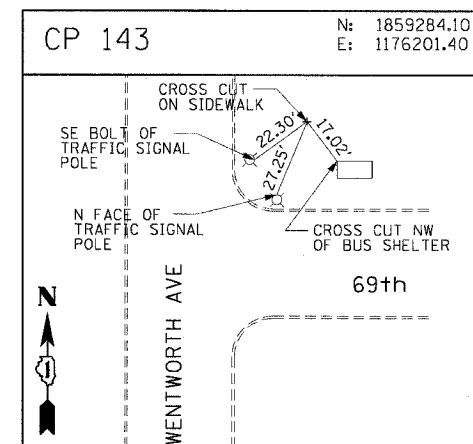
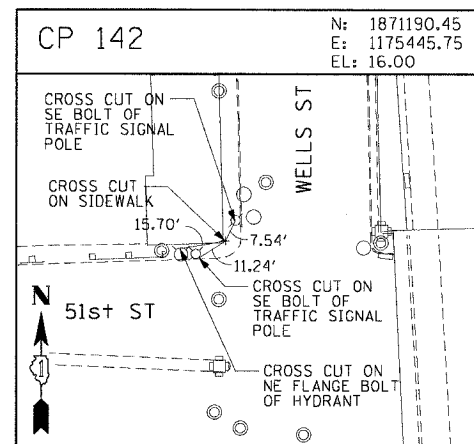
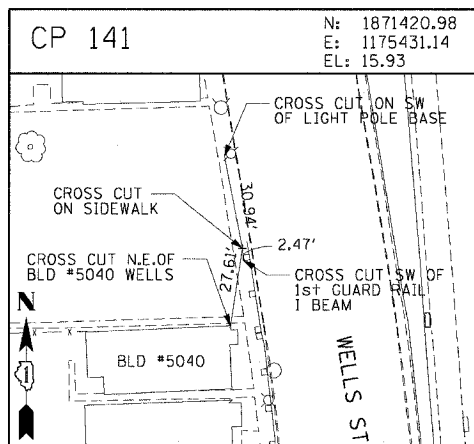
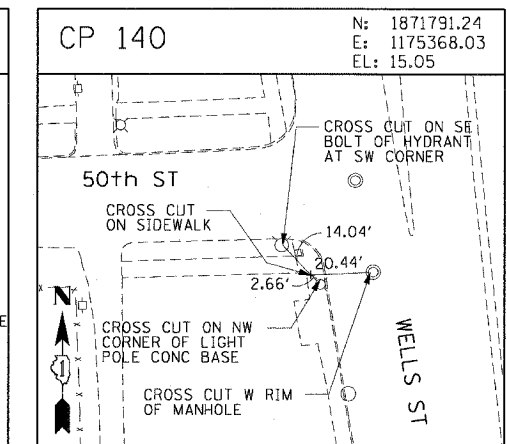
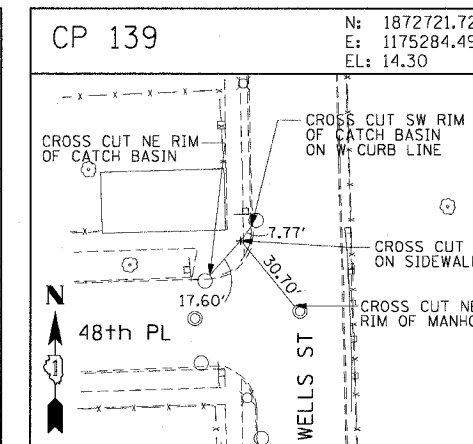
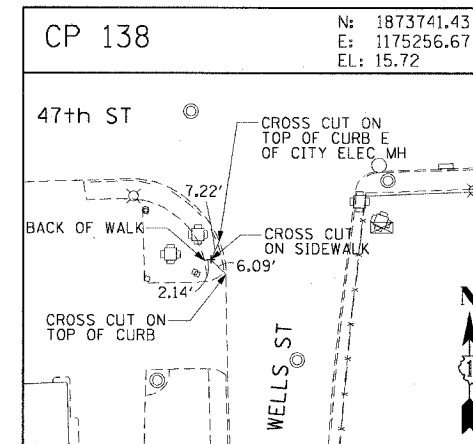
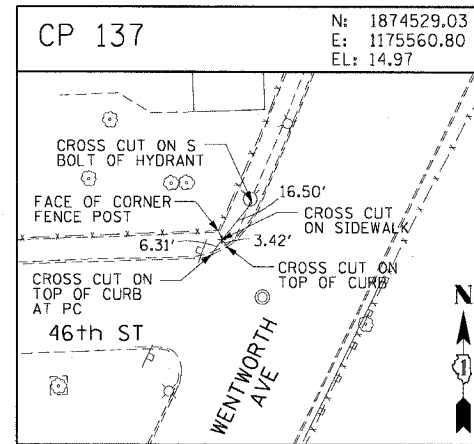
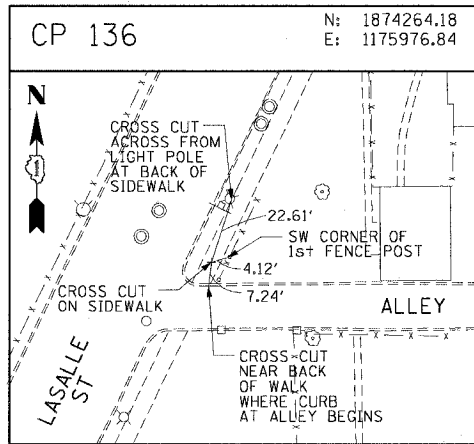


F.A.I. RTE.	SECTION	COUNTY	TOTAL SHEETS	SHEET NO.
90/94	2004-100T	COOK	27	16
STA.		TO STA.		
FED. ROAD DIST. NO. 1		ILLINOIS FED. AID PROJECT		
62841				



REVISIONS	
NAME	DATE

ILLINOIS DEPARTMENT OF TRANSPORTATION
F.A.I. 90/94 (DAN RYAN EXPRESSWAY)
63rd ST TO 59th ST (SEWER TELEVISION)
SURVEY TIES AND CONTROL POINTS

SCALE: 1"=30'
DATE: October 22, 2004

DRAWN BY: MRK
CHECKED BY: JAL

