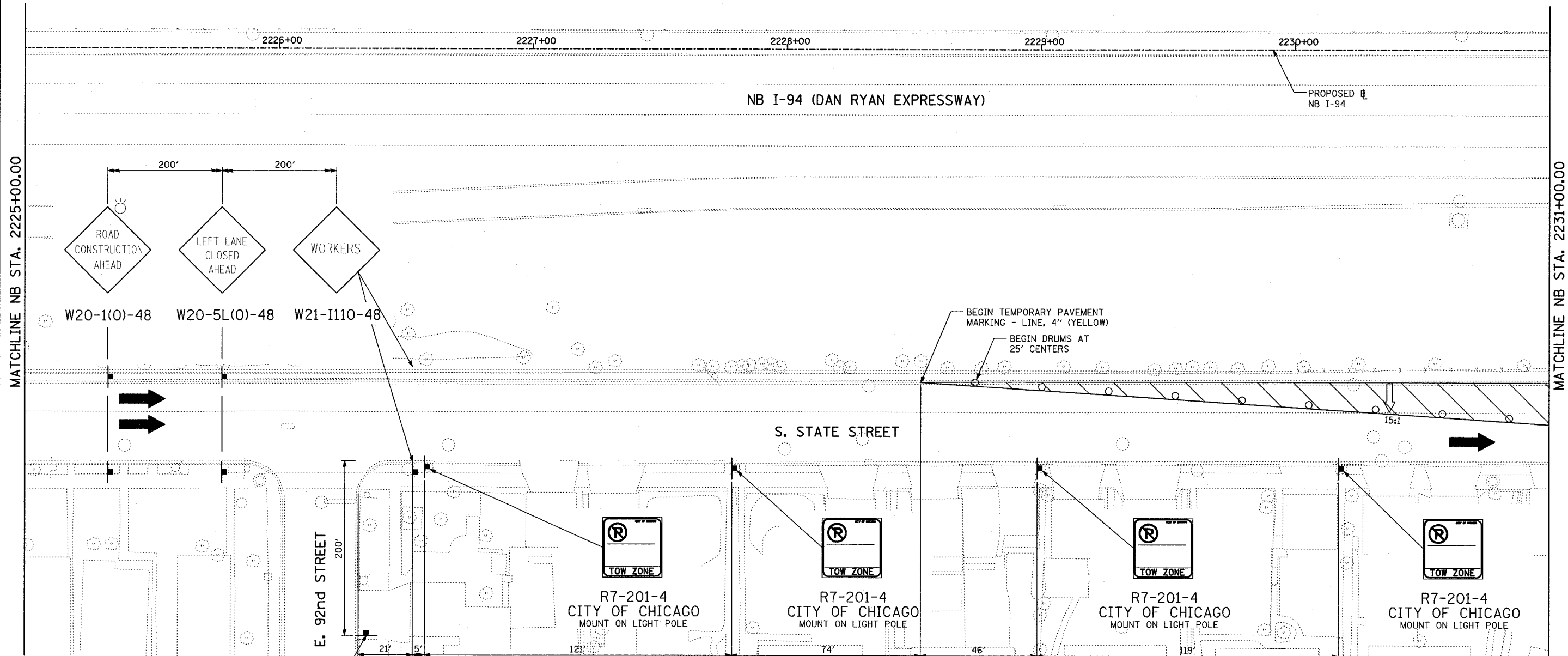
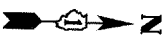


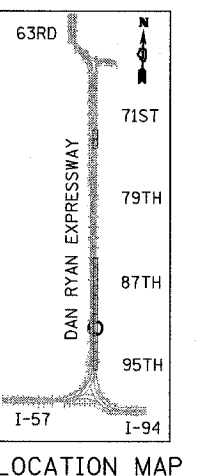
F.A.I. RTE.	SECTION	COUNTY	TOTAL SHEETS	SHEET NO.
94	1516.1-I-1	COOK	195	78
STA. 2016+35		TO STA. 2353+03		
FED. ROAD DIST. NO.	ILLINOIS	FED. AID PROJECT		

62872



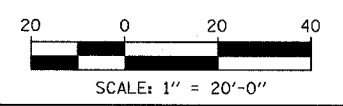
MATCHLINE NB STA. 2225+00.00

MATCHLINE NB STA. 2231+00.00



LEGEND:

- LIMIT OF PAVEMENT REMOVAL FOR TRENCH
- TRAFFIC LANE
- WORK ZONE
- BARRICADE, TYPE III
- DRUM WITH MONO-DIRECTIONAL STEADY BURNING LIGHT
- ARROW BOARD



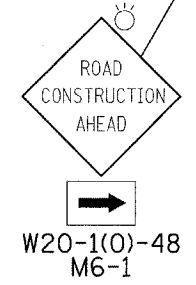
REVISIONS	
NAME	DATE

ILLINOIS DEPARTMENT OF TRANSPORTATION
 F.A.I. 94 (DAN RYAN EXPRESSWAY)
 MAINTENANCE OF TRAFFIC
 NB I-94 STA. 2225+00 TO 2231+00
 (STAGE 5 SHEET 1 OF 5)

SCALE: 1"=20'
 DATE: OCTOBER 4, 2004

DRAWN BY: JPA
 CHECKED BY: MPG

TYLIN INTERNATIONAL



1/12/2004 09:48:24 AM