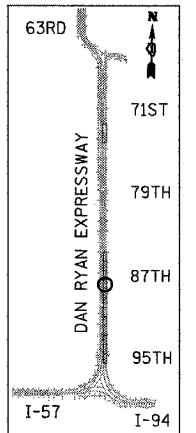
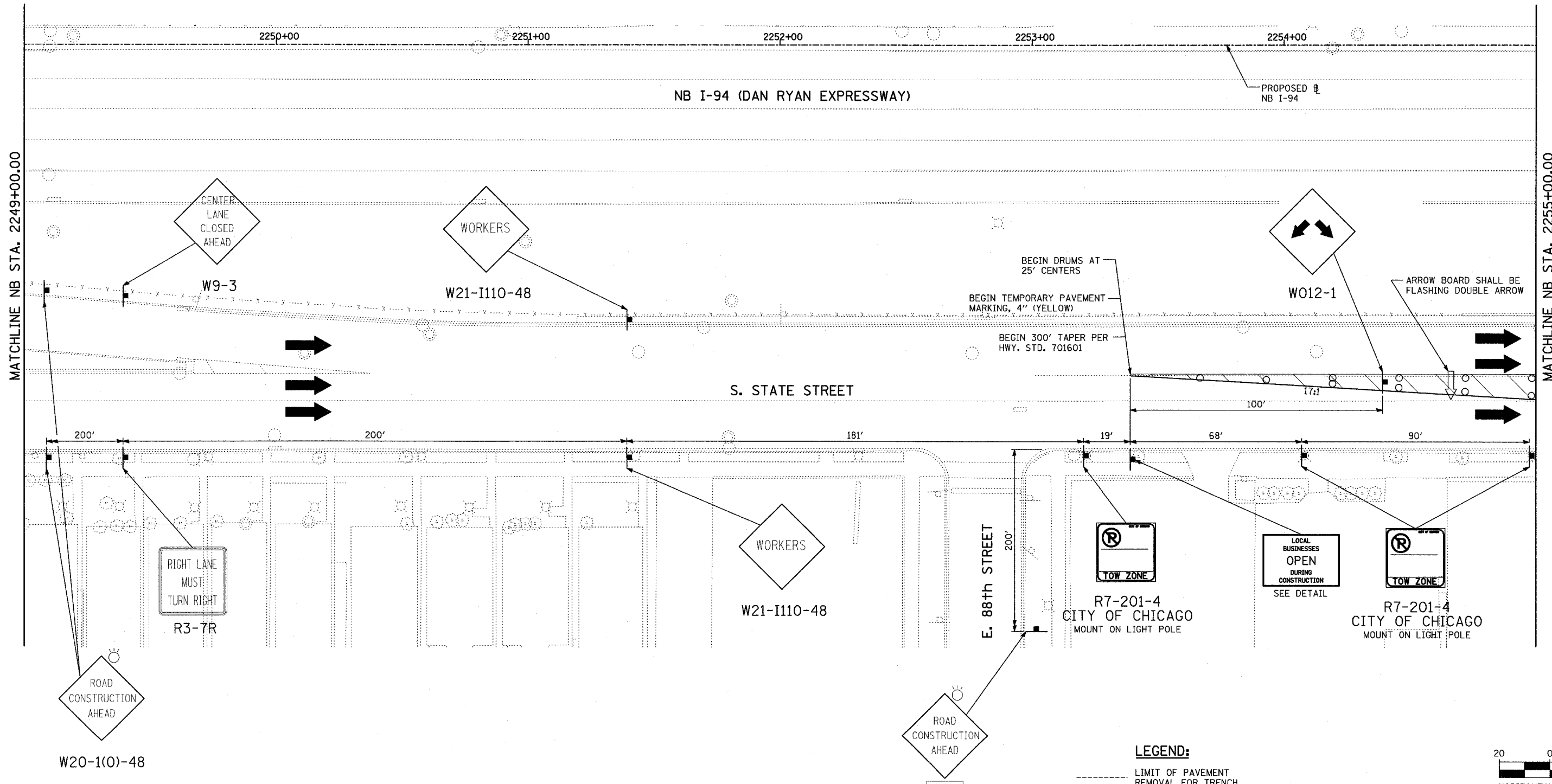
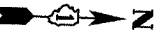
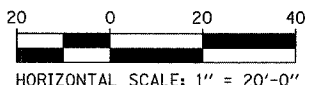


F.A.I. RTE.	SECTION	COUNTY	TOTAL SHEETS	SHEET NO.
94	1516.1-I-1	COOK	195	87
STA. 2016+35		TO STA. 2353+03		
FED. ROAD DIST. NO.	ILLINOIS	FED. AID PROJECT		

62872



LOCATION MAP



LEGEND:

- LIMIT OF PAVEMENT REMOVAL FOR TRENCH
- TRAFFIC LANE
- WORK ZONE
- BARRICADE, TYPE III
- DRUM WITH MONO-DIRECTIONAL STEADY BURNING LIGHT
- ARROW BOARD

REVISIONS	
NAME	DATE

ILLINOIS DEPARTMENT OF TRANSPORTATION
F.A.I. 94 (DAN RYAN EXPRESSWAY)
MAINTENANCE OF TRAFFIC
NB I-94 STA. 2249+00 TO 2255+00
(STAGE 7 SHEET 1 OF 2)

SCALE: 1"=20'
DATE: OCTOBER 4, 2004

DRAWN BY: JPA
CHECKED BY: MPG

MATCHLINE NB STA. 2249+00.00

MATCHLINE NB STA. 2255+00.00

TYLIN INTERNATIONAL

PA:02/27/2004 10:00:00 AM 09/20/05 09:20:35 AM