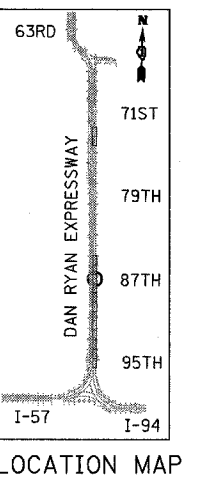
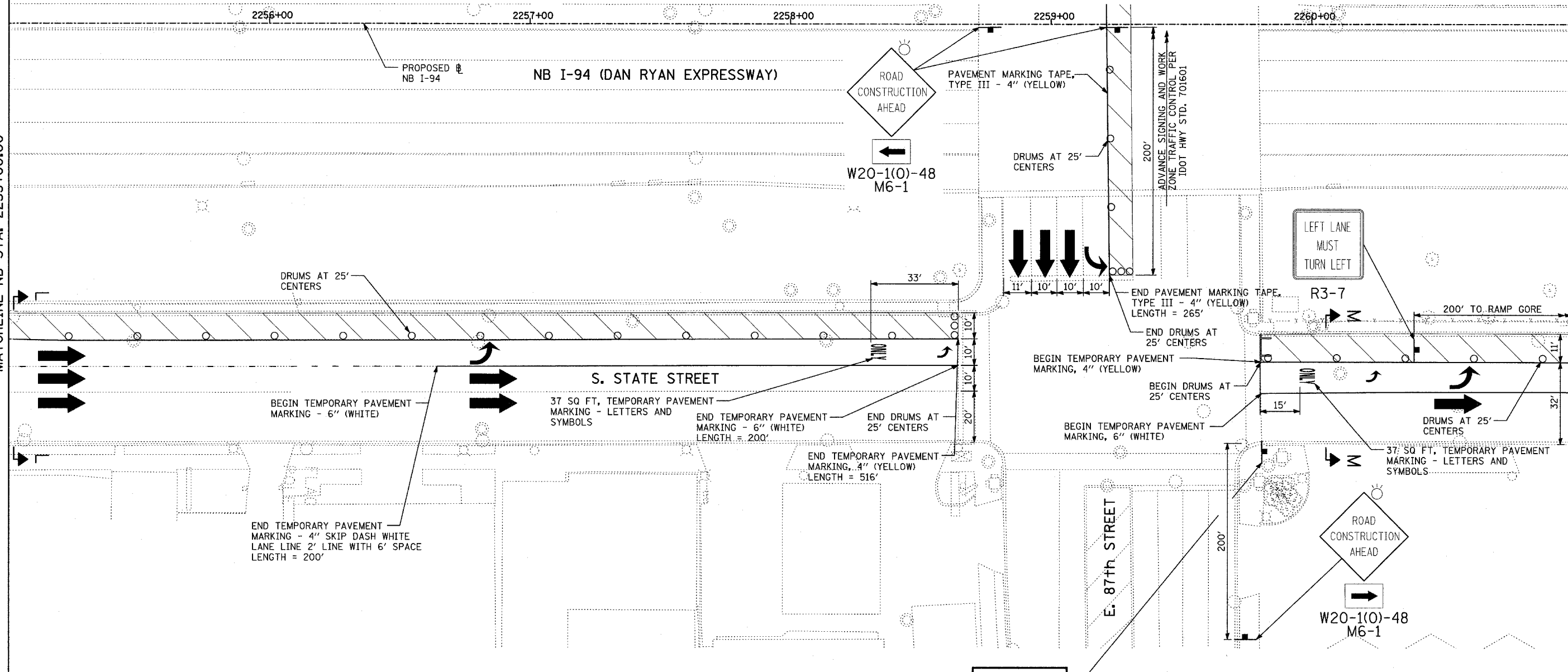




MATCHLINE NB STA. 2255+00.00

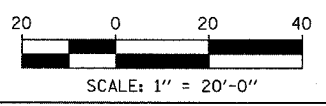
MATCHLINE NB STA. 2261+00.00



**LOCAL BUSINESSES OPEN DURING CONSTRUCTION**  
SEE DETAIL

**LEGEND:**

- LIMIT OF PAVEMENT REMOVAL FOR TRENCH
- TRAFFIC LANE
- WORK ZONE
- BARRICADE, TYPE III
- DRUM WITH MONO-DIRECTIONAL STEADY BURNING LIGHT
- ARROW BOARD



REVISIONS	
NAME	DATE

ILLINOIS DEPARTMENT OF TRANSPORTATION  
**F.A.I. 94 (DAN RYAN EXPRESSWAY)**  
**MAINTENANCE OF TRAFFIC**  
**NB I-94 STA. 2255+00 TO 2261+00**  
**(STAGE 11 SHEET 2 OF 4)**

SCALE: 1"=20'  
 DATE: OCTOBER 4, 2004  
 DRAWN BY: JPA  
 CHECKED BY: MPG

**TYLIN INTERNATIONAL**

17/12/2004 09:23:48 AM