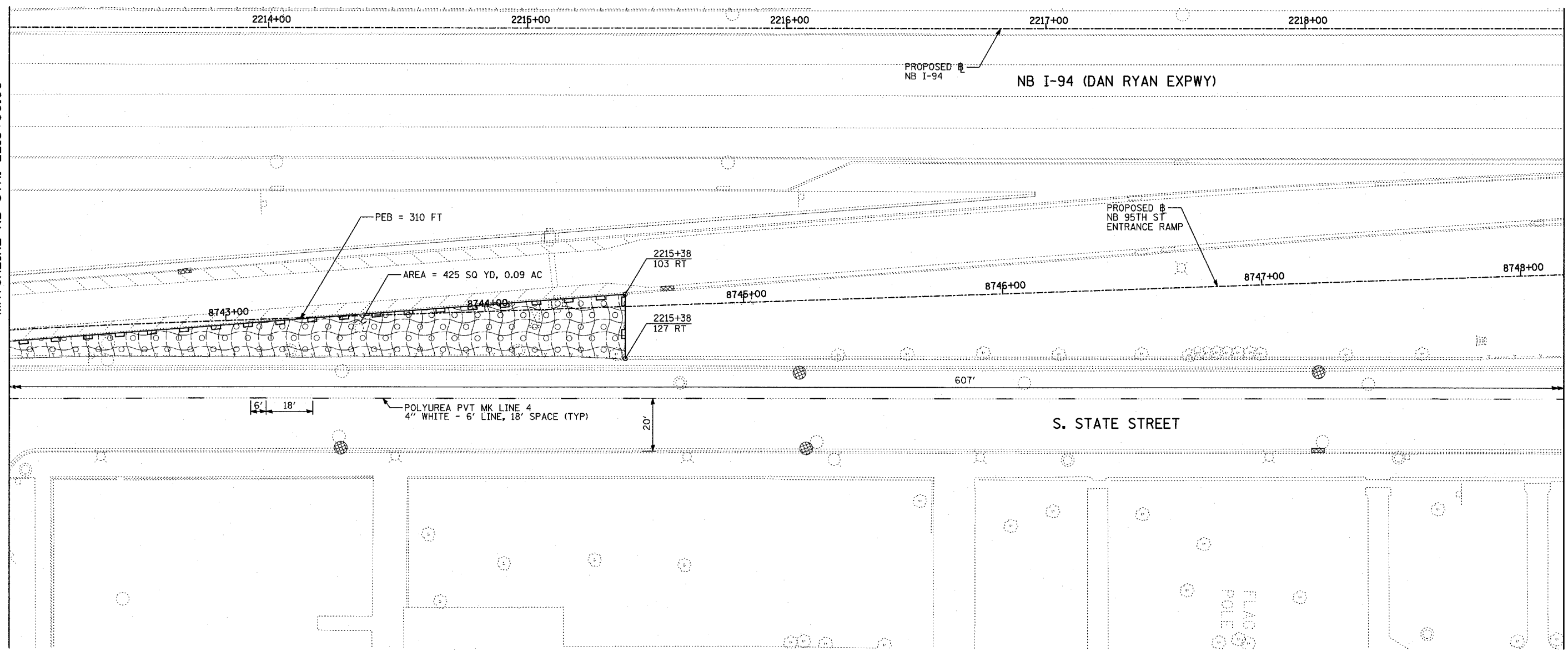


F.A.I. RTE.	SECTION	COUNTY	TOTAL SHEETS	SHEET NO.
94	1516.1-I-1	COOK	195	106
STA. 2016+35		TO STA. 2353+03		
FED. ROAD DIST. NO.	ILLINOIS	FED. AID PROJECT		

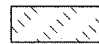
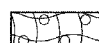
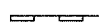
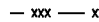

62872

MATCHLINE NB STA. 2213+00.00

MATCHLINE NB STA. 2219+00.00



LEGEND:

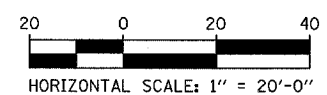
-  SODDING, SALT TOLERANT, NITROGEN, PHOSPHORUS, AND POTASSIUM FERTILIZER NUTRIENTS, TOPSOIL FURNISH AND PLACE, 4"
-  EROSION CONTROL BLANKET, SEEDING, CLASS 2A, NITROGEN, PHOSPHORUS, AND POTASSIUM FERTILIZER NUTRIENTS, TOPSOIL FURNISH AND PLACE, 4"
-  PERIMETER EROSION BARRIER (PEB)
-  TEMPORARY FENCE
-  INLET FILTER, TO BE INSTALLED IN OFF PROJECT DRAINAGE STRUCTURES ACCEPTING STORMWATER RUNOFF

TYLIN INTERNATIONAL

REVISIONS	
NAME	DATE

ILLINOIS DEPARTMENT OF TRANSPORTATION
F.A.I. 94 (DAN RYAN EXPRESSWAY)
EROSION CONTROL & LANDSCAPING
PAVEMENT MARKING
NB I-94 STA. 2213+00 TO 2219+00.00
SHEET 2 OF 14

SCALE: 1"=20'
DATE: OCTOBER 4, 2004
DRAWN BY: RTM
CHECKED BY: MPG



11/12/2004 07:43:37 AM