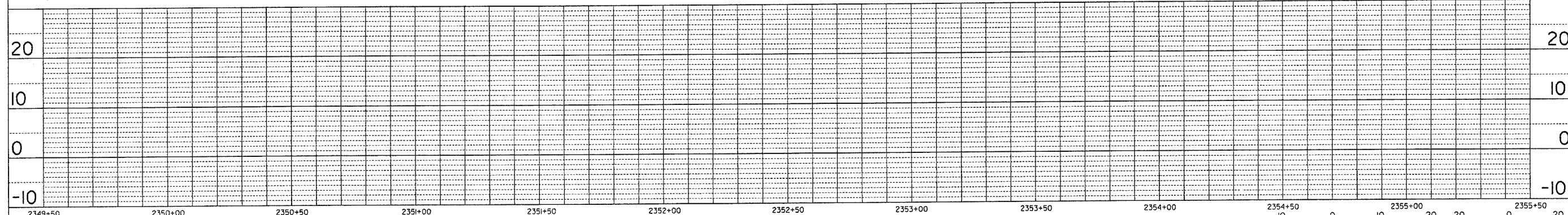
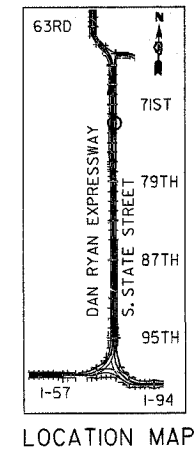
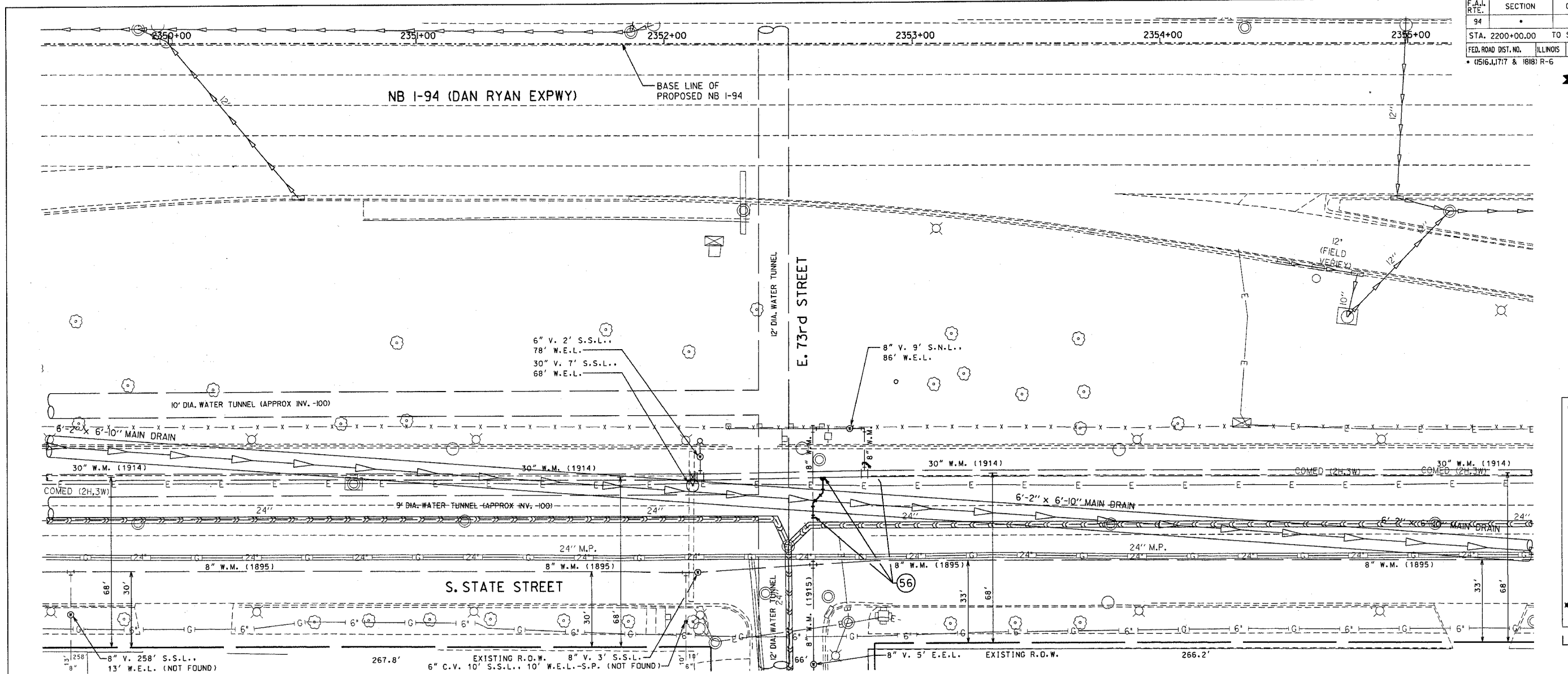


DATE _____ BY _____
 CHECKED _____
 ALIGNED _____
 PLAN NO. _____

DATE _____ BY _____
 SURVEYED _____
 GRADES CHECKED _____
 PLAN NOTED _____
 PROFILE NOTED _____

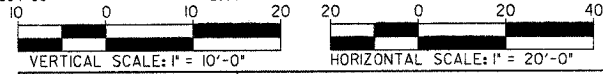


FOR NOTE 55 SEE SHEET NO. C-11



WM. BID ITEM NO. 3a, 7a, 11
 SET: 1-8" TAPPING CONNECTION, 4' NORTH OF EXISTING 8" WATER MAIN
 1-30"x 8" TAPPING SLEEVE
 1-8" TAPPING VALVE
 BUILD BASIN FOR TAPPING VALVE.
 LEAVE THE VALVE IN THE CLOSED POSITION.
 CUT, CAP AND BRACE THE EXISTING 8" CONNECTION TO THE EAST WITH:
 1-8" MJ CAP
 CONNECT THE EXISTING 8" WATER MAIN TO THE TAPPING VALVE
 WITH: 2-8"x 1/8 2BMJ BENDS
 1-8" TRANSITION SLEEVE
 OPEN THE NEWLY INSTALLED VALVE.
 ABANDON THE EXISTING 8" WATER MAIN WEST OF 30" WATER MAIN.

BASE DRAWING SHOWING EXISTING
 CONDITIONS AND UTILITIES IS PREPARED BY:
TYLIN INTERNATIONAL



REVISIONS	
NAME	DATE

ILLINOIS DEPARTMENT OF TRANSPORTATION
F.A.I. 94 (DAN RYAN EXPRESSWAY)
PLAN
RELOCATING 30-INCH X 8-INCH
TAPPING CONNECTION
IN S. STATE STREET AT E. 73RD STREET
 SCALE: 1"=20'
 DATE: SEPTEMBER 3, 2004
 DRAWN BY:
 CHECKED BY:

C-14