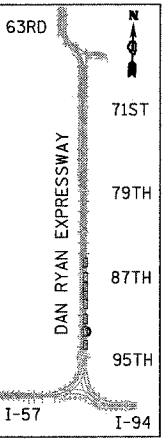
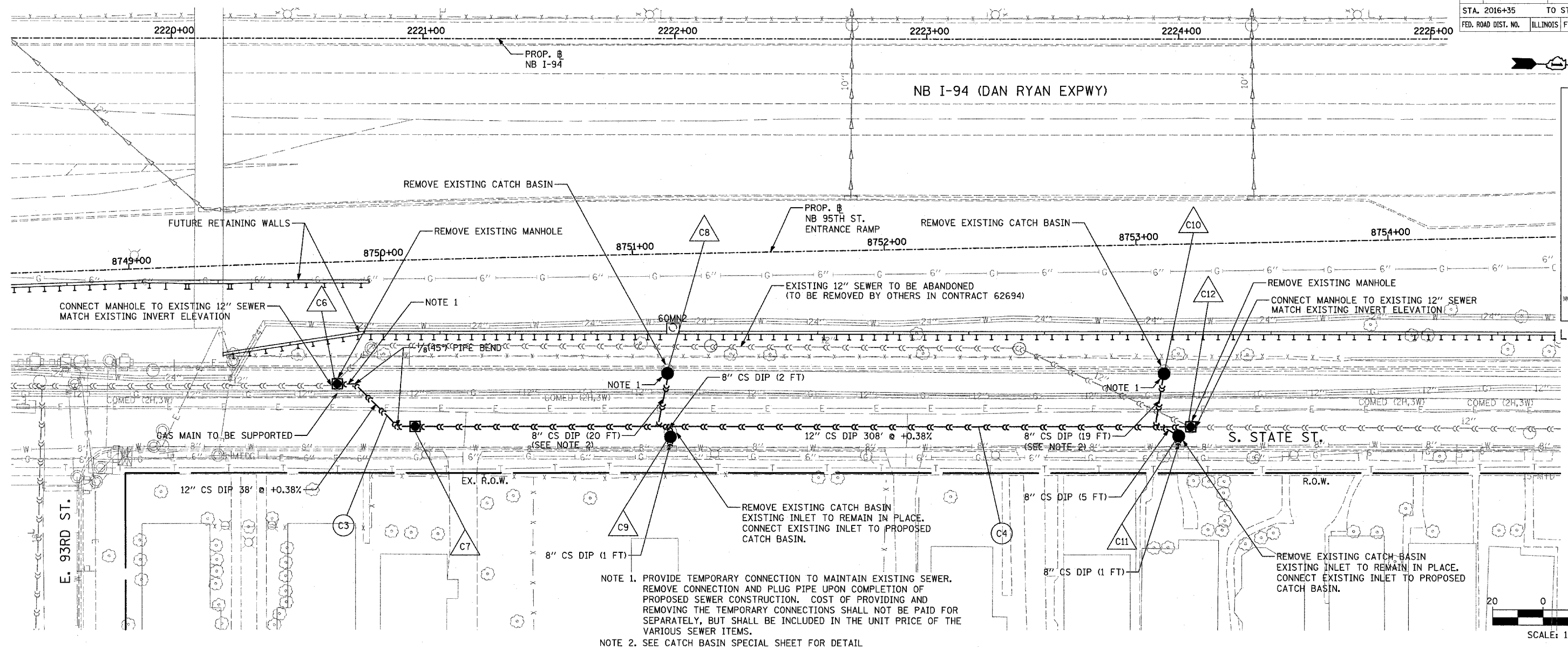


F.A.I. RTE.	SECTION	COUNTY	TOTAL SHEETS	SHEET NO.
94	1516.1-1-1	COOK	195	141
STA. 2016+35		TO STA. 2353+03		
FED. ROAD DIST. NO.		ILLINOIS FED. AID PROJECT		

62872

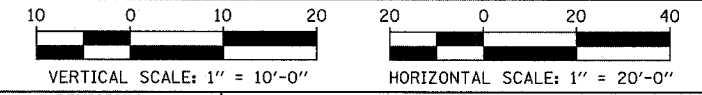
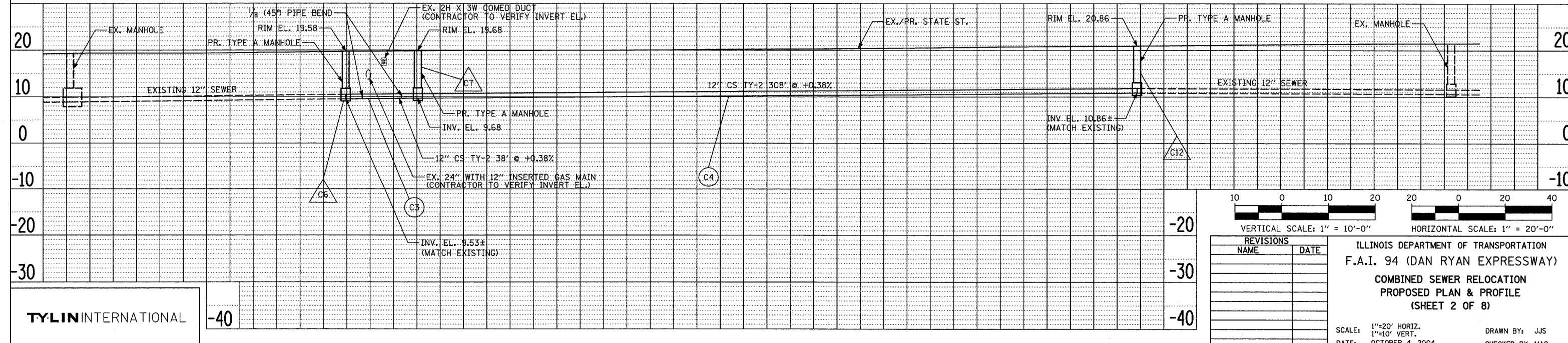
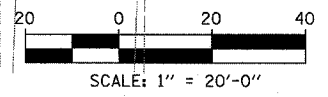
DATE	BY
DATE	BY
DATE	BY

DATE	BY
DATE	BY
DATE	BY



NOTE 1. PROVIDE TEMPORARY CONNECTION TO MAINTAIN EXISTING SEWER. REMOVE CONNECTION AND PLUG PIPE UPON COMPLETION OF PROPOSED SEWER CONSTRUCTION. COST OF PROVIDING AND REMOVING THE TEMPORARY CONNECTIONS SHALL NOT BE PAID FOR SEPARATELY, BUT SHALL BE INCLUDED IN THE UNIT PRICE OF THE VARIOUS SEWER ITEMS.

NOTE 2. SEE CATCH BASIN SPECIAL SHEET FOR DETAIL



REVISIONS	
NAME	DATE

ILLINOIS DEPARTMENT OF TRANSPORTATION
 F.A.I. 94 (DAN RYAN EXPRESSWAY)
 COMBINED SEWER RELOCATION
 PROPOSED PLAN & PROFILE
 (SHEET 2 OF 8)

SCALE: 1"=20' HORIZ.
 1"=10' VERT.
 DATE: OCTOBER 4, 2004

DRAWN BY: JJS
 CHECKED BY: MAG

TYLIN INTERNATIONAL

-40

-40