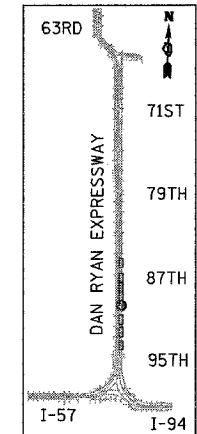
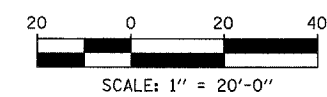
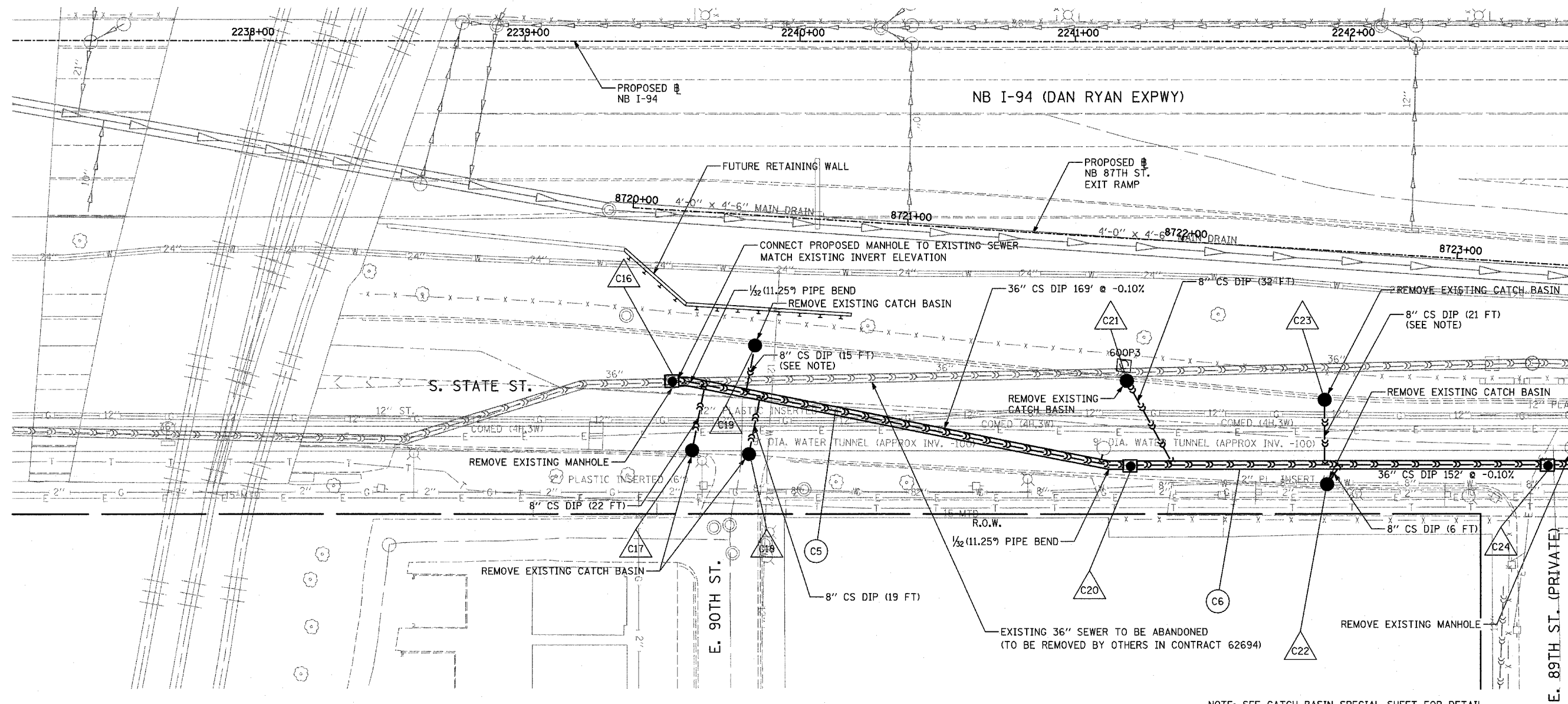


F.A.I. RTE.	SECTION	COUNTY	TOTAL SHEETS	SHEET NO.
94	1516.1-I-1	COOK	195	143
STA. 2016+35	TO STA. 2353+03			
FED. ROAD DIST. NO.	ILLINOIS	FED. AID PROJECT	62872	

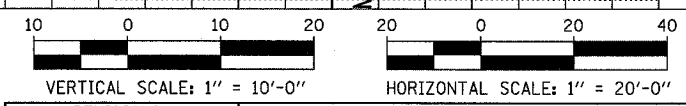
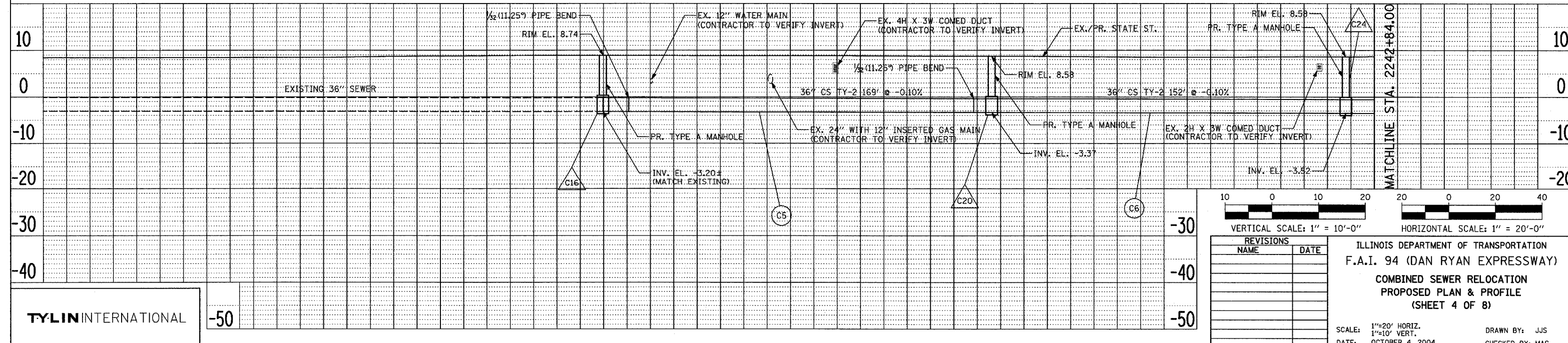


LOCATION MAP

MATCHLINE STA. 2242+84.00



NOTE: SEE CATCH BASIN SPECIAL SHEET FOR DETAIL



REVISIONS	
NAME	DATE

ILLINOIS DEPARTMENT OF TRANSPORTATION
F.A.I. 94 (DAN RYAN EXPRESSWAY)
COMBINED SEWER RELOCATION
PROPOSED PLAN & PROFILE
 (SHEET 4 OF 8)

SCALE: 1"=20' HORIZ.
 1"=10' VERT.
 DATE: OCTOBER 4, 2004
 DRAWN BY: JJS
 CHECKED BY: MAG

TYLIN INTERNATIONAL

-50

-50

DATE	
BY	
PLANNED	
CHECKED	
NO. OF WAY CHECKED	
CADD FILE NAME	

DATE	
BY	
PROFILING	
CHECKED	
NO. OF WAY CHECKED	
STRUCTURE NOTATION	