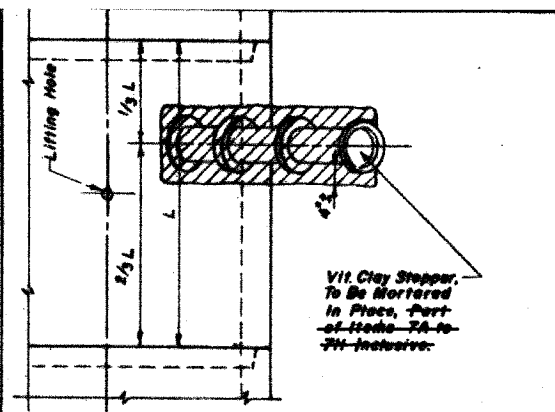
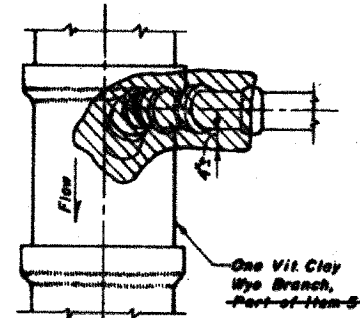


PLAN

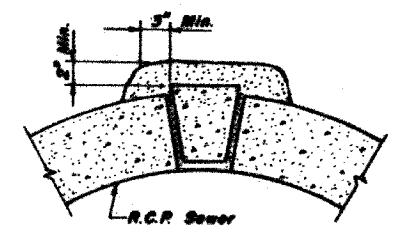


PLAN

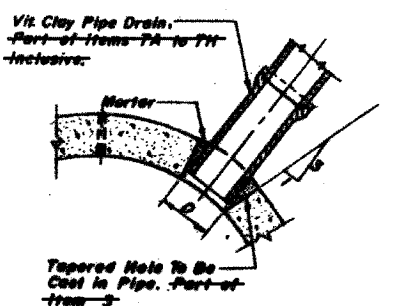


PLAN

NOTE:
Plug to be Coated with Mortar and Driven into Place with a Wooden Mallet and then Sealed with Mortar.

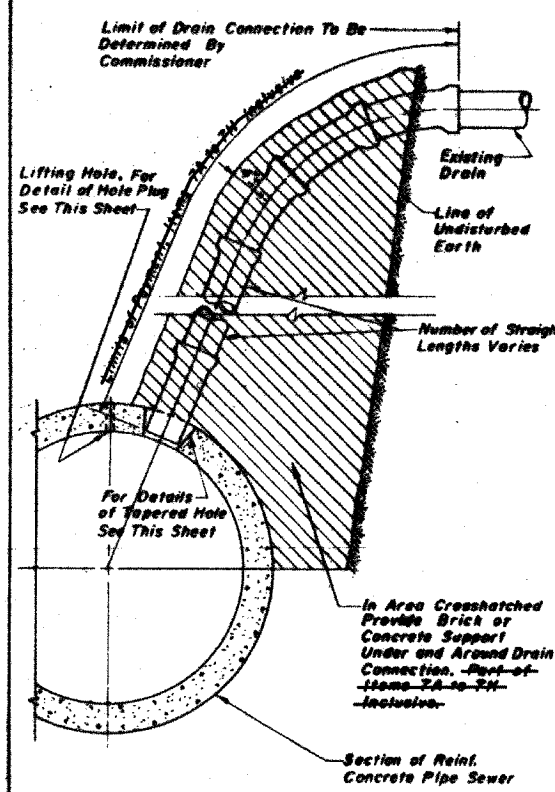


LIFTING HOLE PLUG DETAIL FOR CONCRETE PIPE
Part of Item 5

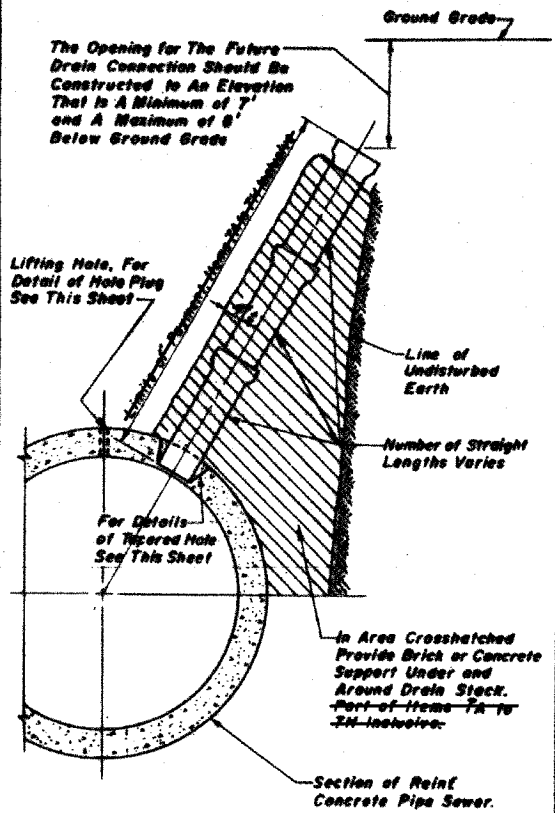


DETAIL OF TAPERED HOLE

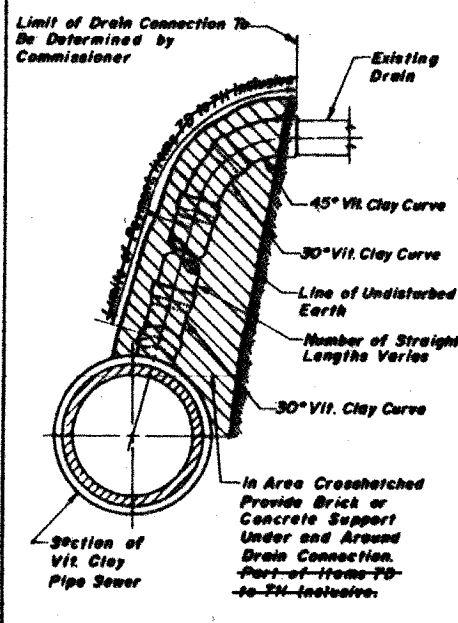
SIZE OF DRAIN	"D"
6"	6 1/2"
8"	9 1/2"
10"	11 1/2"
12"	13 1/2"
15"	17"
18"	20 1/2"
21"	23 1/2"
24"	27 1/2"



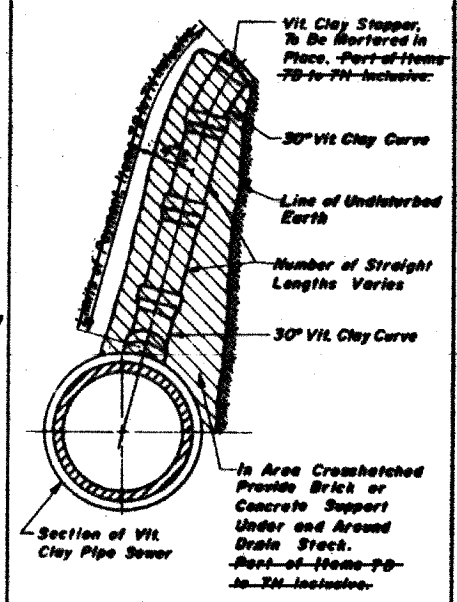
ELEVATION
TYPICAL DRAIN CONNECTIONS FOR EXISTING DRAINS
Items 7A to 7H Inclusive



ELEVATION
TYPICAL DRAIN STACKS FOR FUTURE USE
Items 7A to 7H Inclusive

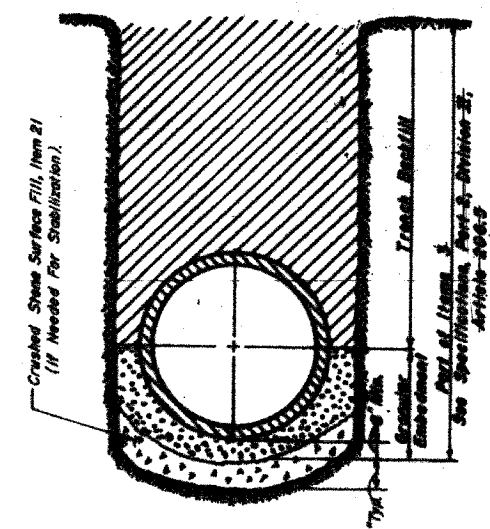


ELEVATION
TYPICAL DRAIN CONNECTIONS FOR EXISTING DRAINS
Items 7D to 7H Inclusive



ELEVATION
TYPICAL DRAIN STACKS FOR FUTURE USE
Items 7D to 7H Inclusive

NOTE:
Granular Material Will Be Used As Bedding For All Pipe Sewers; See Specifications, Book 3, Division II, Articles 207.3 & 208.3.



DETAIL OF GRANULAR EMBEDMENT AND STABILIZATION FOR PIPE SEWER
SEE SPECIFICATIONS, BOOK 3, DIVISION II, ART. 207.3 & 208.3
No Scale

CITY OF CHICAGO
DEPARTMENT OF WATER MANAGEMENT
BUREAU OF ENGINEERING SERVICES

VITRIFIED CLAY PIPE DRAIN CONNECTIONS

SCALE AS SHOWN

CONTRACT SHEET NO.

DRAWN BY REPRODUCTION
CHECKED BY



All Drain Connection Joints Must Be Made With Oatum and Mortar As Specified in Specifications, Part 2, Article 208.5, BOOK 3, DIVISION II, ARTICLE 207.3 FOR DUCTILE IRON PIPE DRAIN CONNECTIONS SEE SHEET NO. 8 OF 10

REVISIONS	
DATE	DESCRIPTION
9/26/04	PRELIMINARY PLAN
	APPROVED PLAN

NOTE: THESE DRAWINGS ARE FOR INFORMATIONAL PURPOSES ONLY. ALL REFERENCES TO PAY ITEMS OR PAY LIMITS SHOULD BE IGNORED. SEE SPECIAL PROVISIONS FOR PAY ITEMS.

REVISIONS	
NAME	DATE

ILLINOIS DEPARTMENT OF TRANSPORTATION
F.A.I. 94 (DAN RYAN EXPRESSWAY)

CITY OF CHICAGO
DEPARTMENT OF WATER MANAGEMENT
SEWER RELOCATION DETAIL
(SHEET 9 OF 9)

SCALE: NONE
DATE: OCTOBER 4, 2004
DRAWN BY: MB
CHECKED BY: MPG

TYLIN INTERNATIONAL