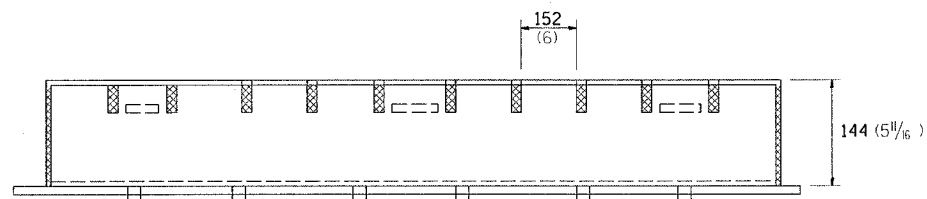
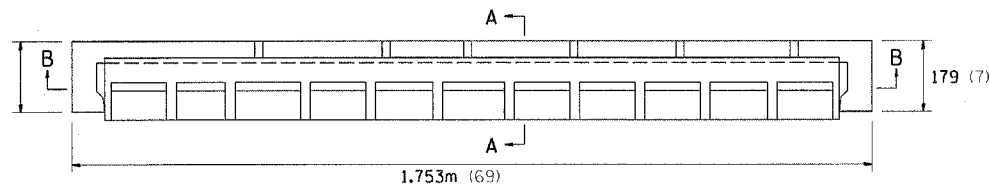
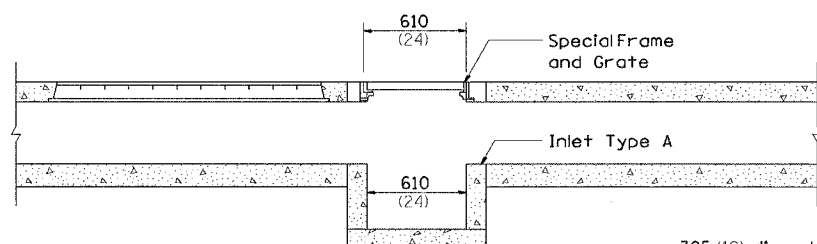


# DETAIL OF SLOTTED VANE DRAIN 305 (12) WITH 152 (6) SLOT

F.A.P. RTE.	SECTION	COUNTY	TOTAL SHEETS	SHEET NO.
742	37R-2	OGLE	389	160
STA.	TO STA.			
FED. ROAD DIST. NO.	ILLINOIS	FED. AID PROJECT		
CONTRACT #64157				

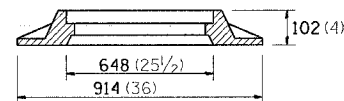
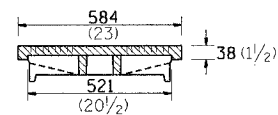
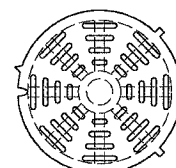


SECTION B-B



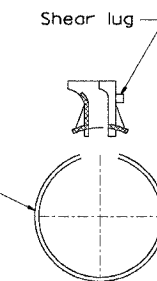
SIDE VIEW

SPECIAL FRAME AND GRATE

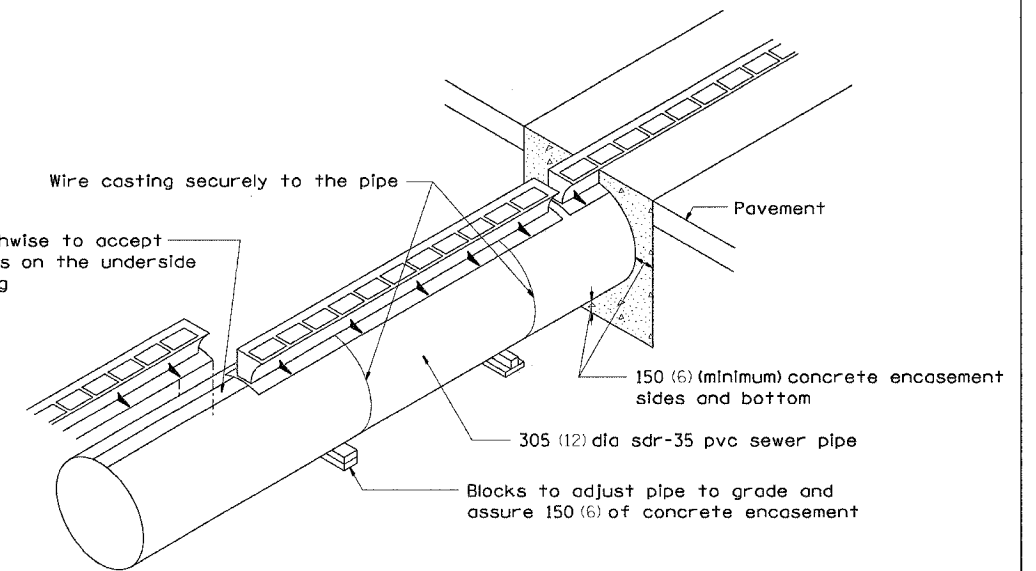


Total Weight 129 Kg. (285 Lbs.)

SECTION A-A



305 (12) dia sdr-35 sewer pipe



**GENERAL NOTES:**

Class SI concrete shall be used throughout.

The contract unit price per foot for SLOTTED DRAIN 300 (12) w/150 (6) SLOT shall include the grate, class SI concrete, sdr-35 pvc 300 (12) sewer pipe, blocks, wire and excavation.

The Inlet TYPE A to be in accordance with Standard 1683.

The contract unit price each for INLETS; TYPE A, WITH SPECIAL FRAME, OPEN LID shall include a Type A Inlet and the special frame and grate detailed above.

ALL DIMENSIONS ARE IN MILLIMETERS (INCHES) UNLESS OTHERWISE NOTED.

DATE-TIME  
 DRAWN-SPEC.  
 CHECKED-REF.  
 DESIGNED-REF.  
 APPROVED-REF.