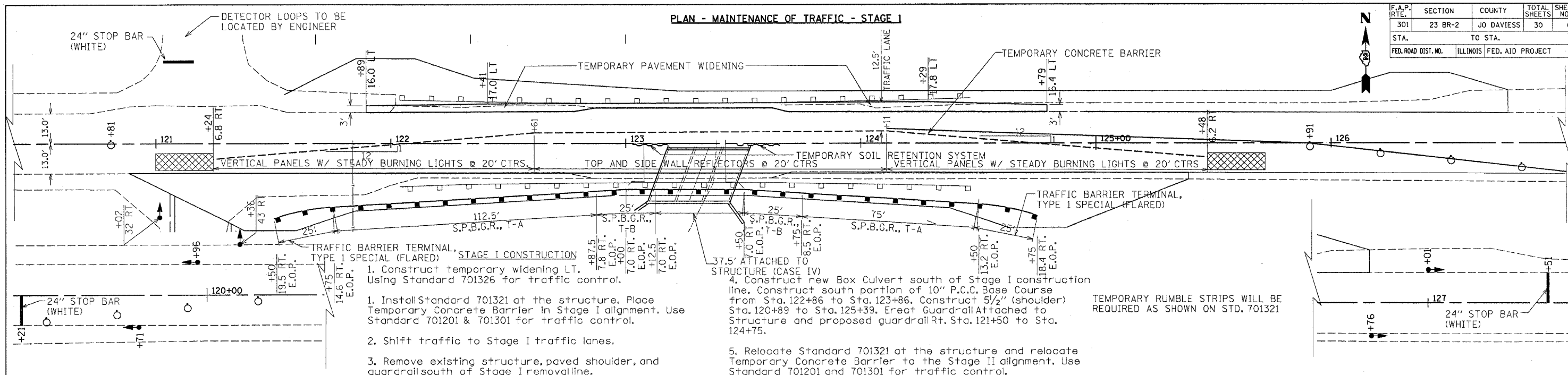
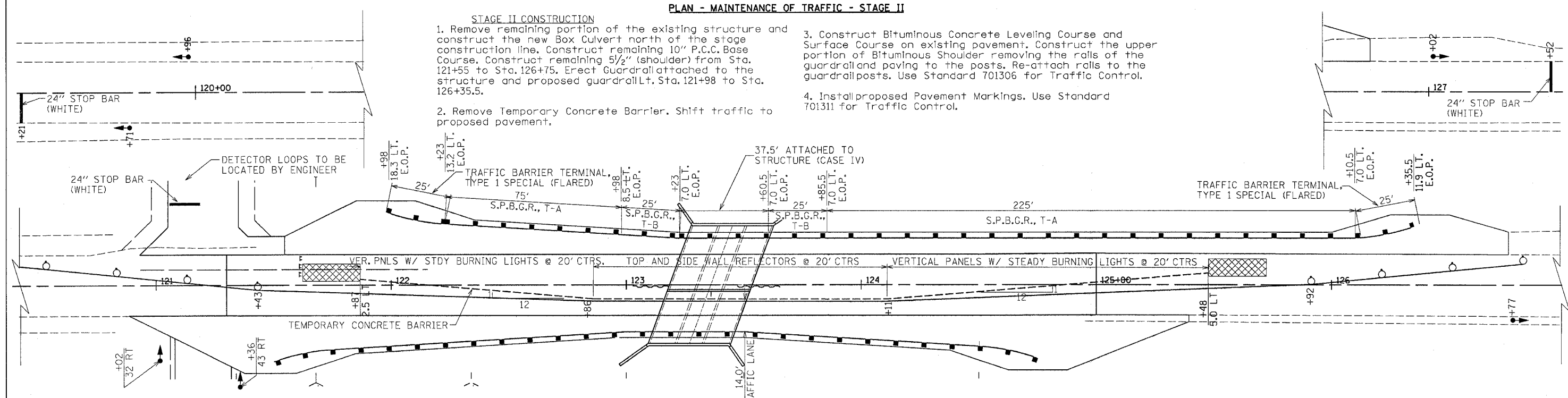


F.A.P. RTE.	SECTION	COUNTY	TOTAL SHEETS	SHEET NO.
301	23 BR-2	JO DAVIESS	30	6
STA. TO STA.		FED. ROAD DIST. NO. ILLINOIS FED. AID PROJECT		



- STAGE I CONSTRUCTION**
1. Construct temporary widening LT. Using Standard 701326 for traffic control.
 1. Install Standard 701321 at the structure. Place Temporary Concrete Barrier in Stage I alignment. Use Standard 701201 & 701301 for traffic control.
 2. Shift traffic to Stage I traffic lanes.
 3. Remove existing structure, paved shoulder, and guardrail south of Stage I removal line.
 4. Construct new Box Culvert south of Stage I construction line. Construct south portion of 10" P.C.C. Base Course from Sta. 122+86 to Sta. 123+86. Construct 5 1/2" (shoulder) Sta. 120+89 to Sta. 125+39. Erect Guardrail Attached to Structure and proposed guardrail Rt. Sta. 121+50 to Sta. 124+75.
 5. Relocate Standard 701321 at the structure and relocate Temporary Concrete Barrier to the Stage II alignment. Use Standard 701201 and 701301 for traffic control.

TEMPORARY RUMBLE STRIPS WILL BE REQUIRED AS SHOWN ON STD. 701321



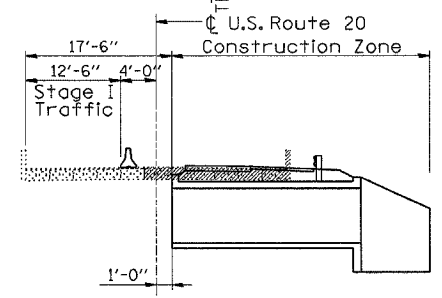
- STAGE II CONSTRUCTION**
1. Remove remaining portion of the existing structure and construct the new Box Culvert north of the stage construction line. Construct remaining 10" P.C.C. Base Course. Construct remaining 5 1/2" (shoulder) from Sta. 121+55 to Sta. 126+75. Erect Guardrail attached to the structure and proposed guardrail Lt. Sta. 121+98 to Sta. 126+35.5.
 2. Remove Temporary Concrete Barrier. Shift traffic to proposed pavement.
 3. Construct Bituminous Concrete Leveling Course and Surface Course on existing pavement. Construct the upper portion of Bituminous Shoulder removing the rolls of the guardrail and paving to the posts. Re-attach rolls to the guardrail posts. Use Standard 701306 for Traffic Control.
 4. Install proposed Pavement Markings. Use Standard 701311 for Traffic Control.

GENERAL NOTES

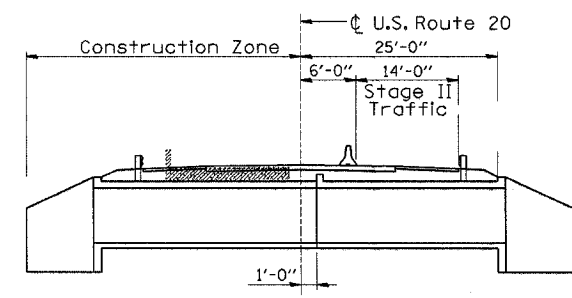
MAINTENANCE OF TRAFFIC SHALL BE IN ACCORDANCE WITH STATE STANDARD 701321, THE SPECIAL PROVISIONS AND AS DIRECTED BY THE ENGINEER. THE ENGINEER SHALL BE INFORMED OF THE STAGE CHANGES 48 HOURS IN ADVANCE.

THE CONTRACTOR'S ATTENTION IS DIRECTED TO THE FACT THAT WHEN WORK COMMENCES, THE CONTRACTOR SHALL ASSUME THE MAINTENANCE OF ANY PAVEMENT, SHOULDERS, DRAINAGE FACILITIES, TRAFFIC CONTROL SIGNS, PAVEMENT MARKINGS AND OTHER APPURTENANCES ON THE ROADWAYS WITHIN THE PROJECT LIMITS OF THE CONTRACT WHICH ARE TO BE USED BY THE PUBLIC DURING CONSTRUCTION AND TO RETAIN THIS MAINTENANCE RESPONSIBILITY UNTIL THE STATE ASSUMES THE MAINTENANCE.

- TYPE III BARRICADES
- DRUM WITH STEADY BURNING LIGHT
- IMPACT ATTENUATOR
- TRAFFIC SIGNAL
- TEMPORARY CONCRETE BARRIER



STAGE I CONSTRUCTION



STAGE II CONSTRUCTION

REVISIONS	
NAME	DATE

ILLINOIS DEPARTMENT OF TRANSPORTATION
TRAFFIC MAINTENANCE

SCALE: HORIZ. 1"=20'
DATE 12-12-03
DRAWN BY DH
CHECKED BY SK