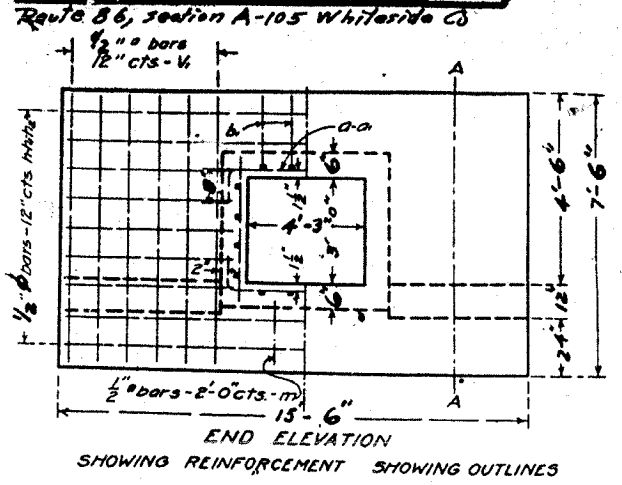
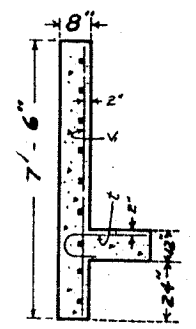


FED. ROAD DIST. NO.	STATE	FED. AID PROJ. NO.	FISCAL YEAR	SHEET NO.	TOTAL SHEETS
1197	ILL	105 BR-2	WHITESIDE	59	35
EXISTING CONDITIONS:					
FOR INFORMATION ONLY CONTRACT 64421					

FED. ROAD DIST. NO.	STATE	FED. AID PROJ. NO.	FISCAL YEAR	SHEET NO.	TOTAL SHEETS
7	ILL	121	1928	74	83



ILD TOPS OF HEAD-WALLS  
LEVEL TO GRADE LINE.

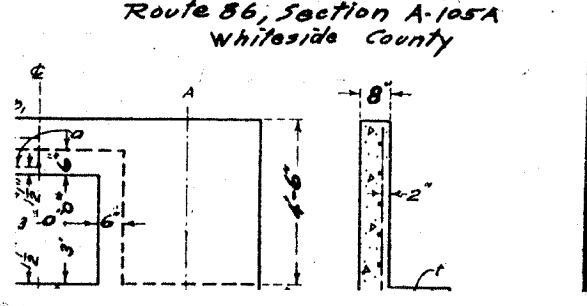


Bars	No.	Size	Length
V	186	1/2"	32'-9"
VI	24	1/2"	7'-0"
h	6	1/2"	15'-0"
hi	10	1/2"	8'-0"
hi	10	1/2"	8'-0"
a	182	1/2"	5'-0"
a	28	1/2"	6'-6"
b	32	1/2"	25'-0"
b	20	1/2"	20'-6"
l	24	1/2"	4'-6"
m	2	1/2"	5'-0"
Steel - Lbs.	3870		
Concrete - Cu. Yds.	31.6		

Class A concrete to be used throughout. Proportions: 1:2 1/2:4. Use 'm' bars in downstream headwall only.

Sta. 398+00  
S.D.I. Route 86 Sec. 105

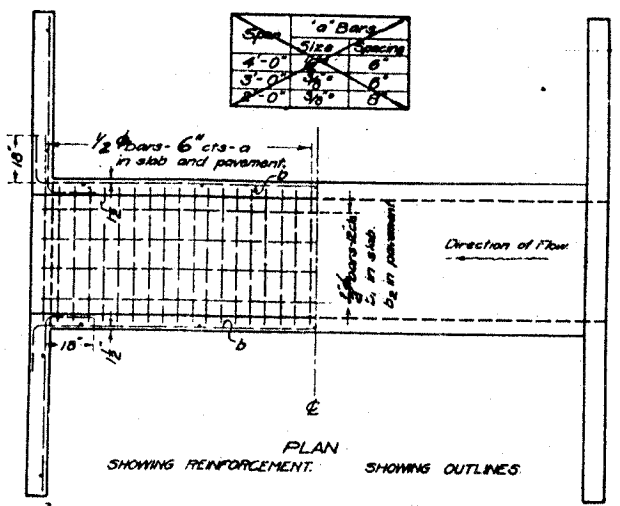
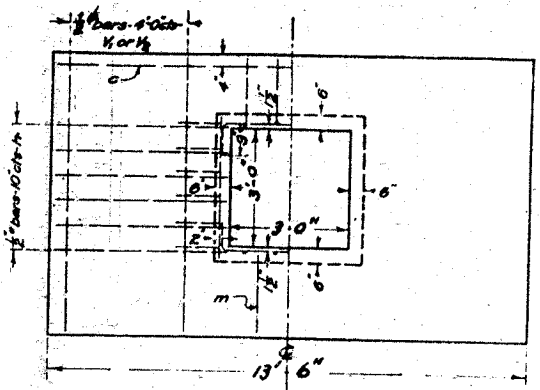
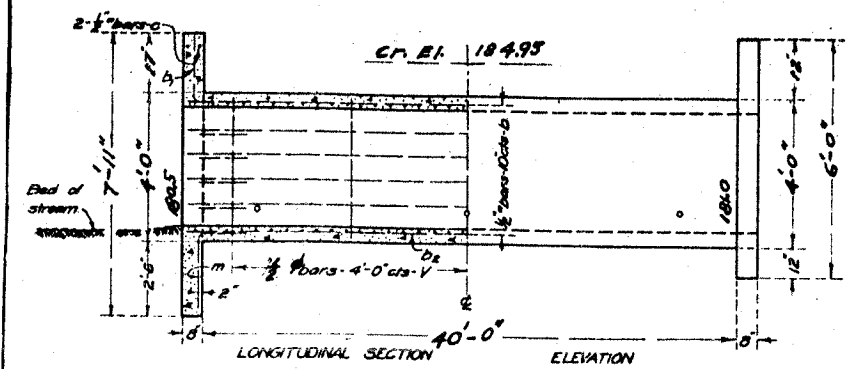
FED. ROAD DIST. NO.	STATE	FED. AID PROJ. NO.	FISCAL YEAR	SHEET NO.	TOTAL SHEETS
7	ILL	121	1928	74	83



Rt. 427+50 El. 183.89  
V.C. 200' Ext 0.79  
Grades -1.60% & +1.543%

STATE OF ILLINOIS  
STATE HIGHWAY DEPARTMENT  
REINFORCED CONCRETE BOX CULVERT

FED. ROAD DIST. NO.	STATE	FED. AID PROJ. NO.	FISCAL YEAR	SHEET NO.	TOTAL SHEETS
7	ILL	121	1928	74	83



Note:  
Fill over box should be limited to 4'-0".  
Maximum Clearance = 4'-0"  
Use 'm' bars in downstream headwall only.

ADJUST HEIGHT OF HEAD-WALLS TO BE 18 INCHES ABOVE SHOULDER ELEVATION.

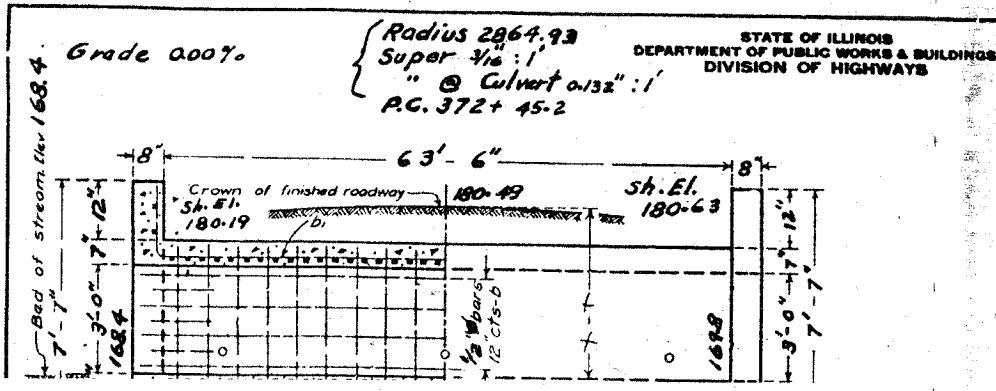
BUILD TOPS OF HEAD-WALLS PARALLEL TO GRADE LINE.

Bars	No.	Size	Length
V	22	1/2"	32'-9"
VI	4	1/2"	2'-6"
VI	4	1/2"	2'-6"
h	20	1/2"	6'-6"
a	164	1/2"	5'-0"
b	20	1/2"	23'-0"
b	6	1/2"	22'-6"
ba	6	1/2"	21'-6"
c	4	1/2"	5'-0"
m	2	1/2"	5'-0"
Steel - Lbs.	1370		
Concrete - Cu. Yds.	14.6		

Class A concrete to be used throughout  
Proportions 1-2 1/2-4

Sta. 428+10  
Rte 86 sec. 105  
Whiteside County

STANDARD SPECIFICATIONS FOR CONSTRUCTION OF PUBLIC WORKS  
APPROVED BY THE BOARD OF SUPERVISORS  
SPECIAL PROVISIONS  
APPROVED BY THE BOARD OF SUPERVISORS  
R. G. Bunch  
ENGR. OF DESIGN



FED. ROAD DIST. NO.	STATE	FED. AID PROJ. NO.	FISCAL YEAR	SHEET NO.	TOTAL SHEETS
7	ILL	121	1928	74	83

