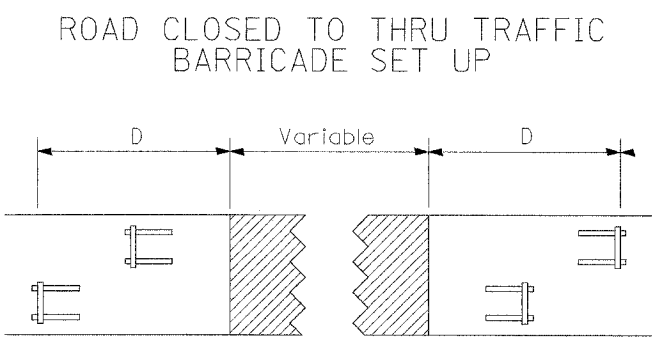
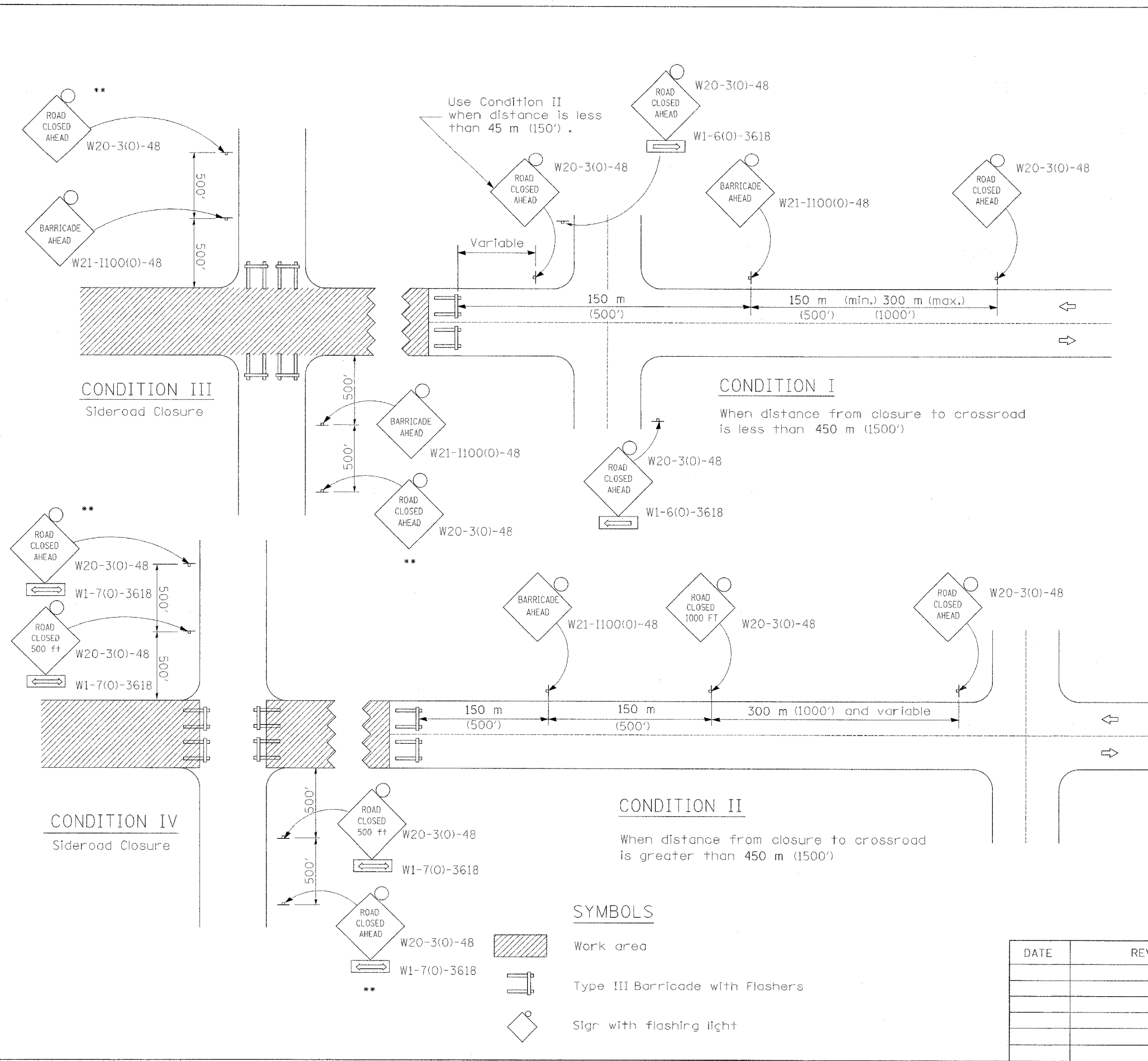


| | | | | |
|----------------------|------------------|-----------|--------------|-----------|
| P&E NO. | SECTION | COUNTY | TOTAL SHEETS | SHEET NO. |
| 1197 | 105 BR-2 & 106-T | WHITESIDE | 59 | 38 |
| STA. | TO STA. | | | |
| EXISTING CONDITIONS: | | | | |

64421



Type III Barricades and R11-4-4830 signs shall be as shown in "Road Closed To All Thru Traffic" detail on Highway Standard 702001. If the distance "D" exceeds 600 m (2000') an additional set of barricades and R11-4-4830 shall be placed at each end of the work area.

GENERAL NOTES

- ** Where local access is to be maintained, barricades are to be set up as shown above in Road Closed to thru traffic.
- Type III Barricades and R11-2-4830 signs shall be as shown in "Road Closed To All Traffic" detail on Highway Standard 702001.
- Longitudinal dimensions may be adjusted to fit field conditions.
- When the distance between the barricade and the intersection is between 450 m (1500') and 600 m (2000'), the advance sign shall be placed at the intersection. When the distance between the barricade and the intersection is over 600 m (2000'), an additional sign shall be placed at the intersection. The additional sign shall give the distance to the barricade in miles or fractions of a mile.
- All dimensions are in millimeters (inches) unless otherwise shown.

| DATE | REVISIONS |
|------|-----------|
| | |
| | |
| | |
| | |
| | |

TYPICAL APPLICATION OF TRAFFIC CONTROL DEVICES FOR ROAD CLOSURE

TRAFFIC CONTROL FOR ROAD CLOSURE