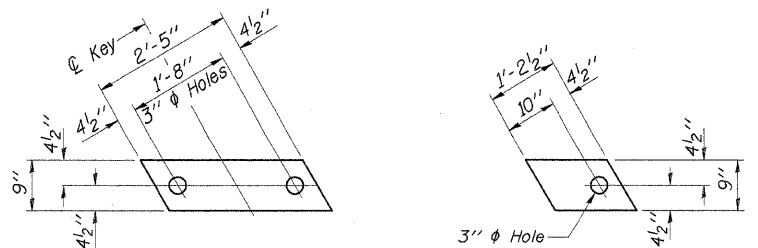


STATE OF ILLINOIS
DEPARTMENT OF TRANSPORTATION

ROUTE NO.	SECTION	COUNTY	TOTAL SHEETS	SHEET NO.
F.A.P. 330	16BR	KANKAKEE	37	21

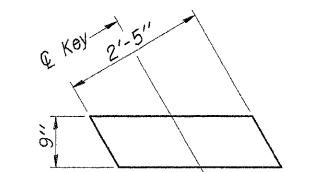
CONTRACT NO. 66365
Sheet 4 of 18



FABRIC BEARING PAD
Interior - 24 Required

FABRIC BEARING PAD
Exterior - 32 Required

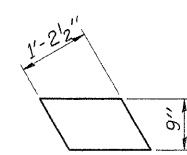
FIXED
(At Piers)



FABRIC BEARING PAD
Interior - 24 Required

FABRIC BEARING PAD
Exterior - 32 Required

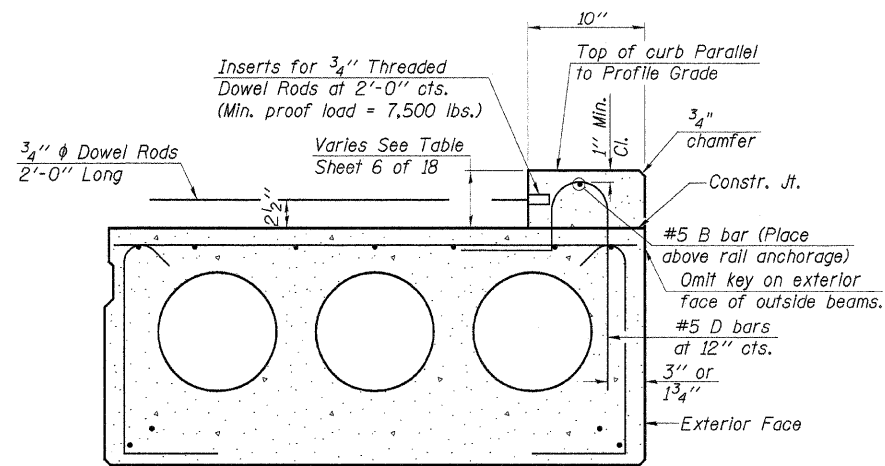
EXPANSION
(At Abutments)



Note:

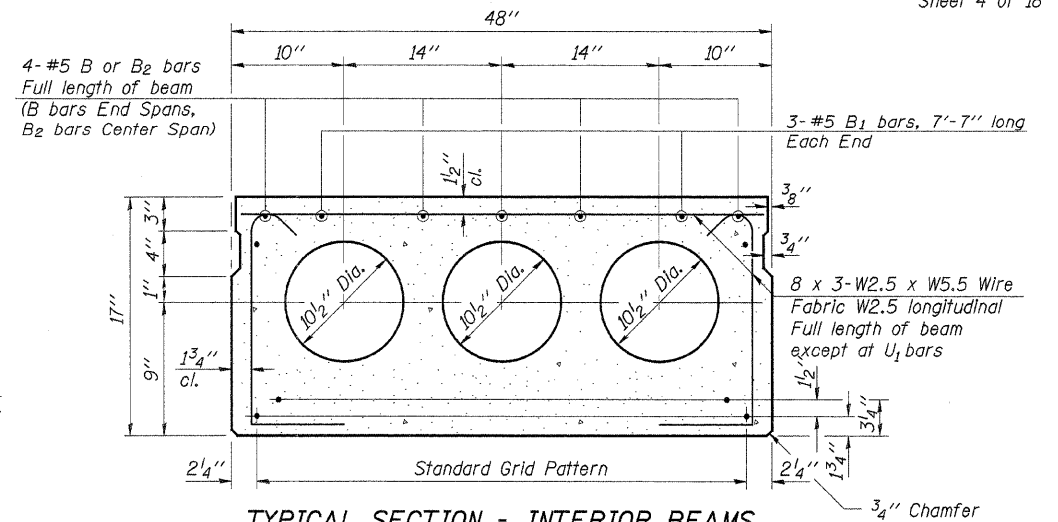
Bridge rail inserts shall be cast in precast beams and curbs. Curbs shall be cast by the precast prestressed concrete supplier after strands have been released and prior to shipping the beam. The concrete in the curb shall be the same as specified for the deck beams.

The curb inserts and threaded dowel rods may be either epoxy coated or galvanized and the cost shall be included with precast prestressed concrete deck beams.



SECTION THRU EXTERIOR BEAMS

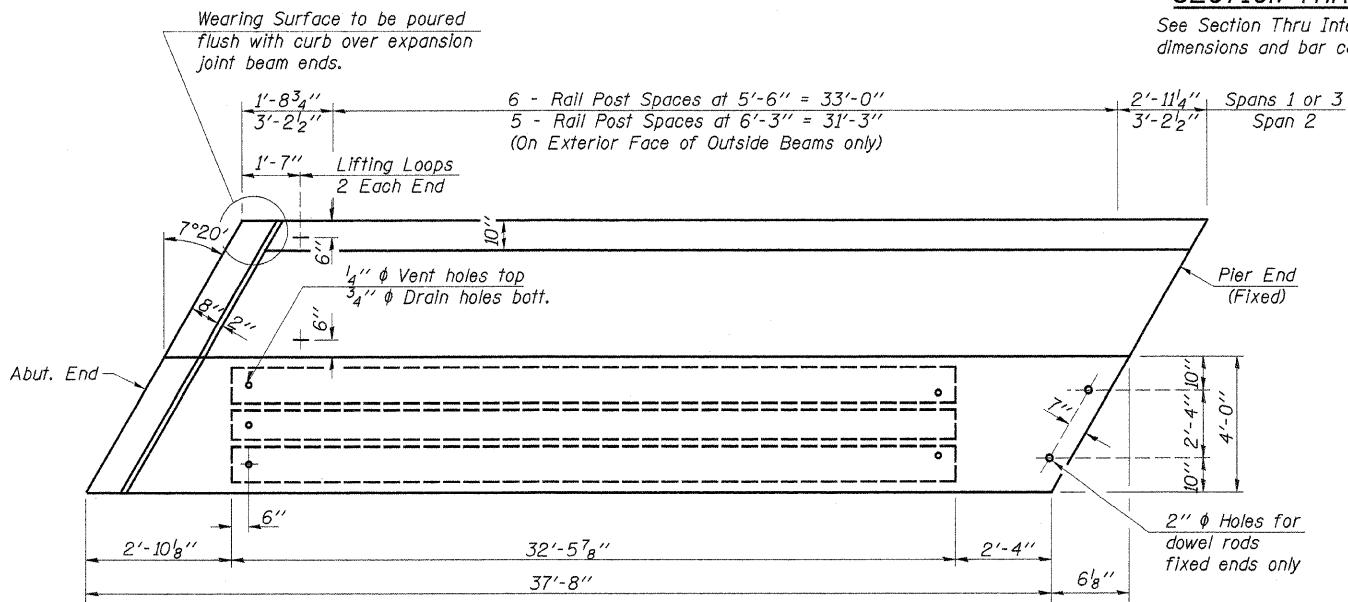
See Section Thru Interior Beams for strand pattern, dimensions and bar call outs.



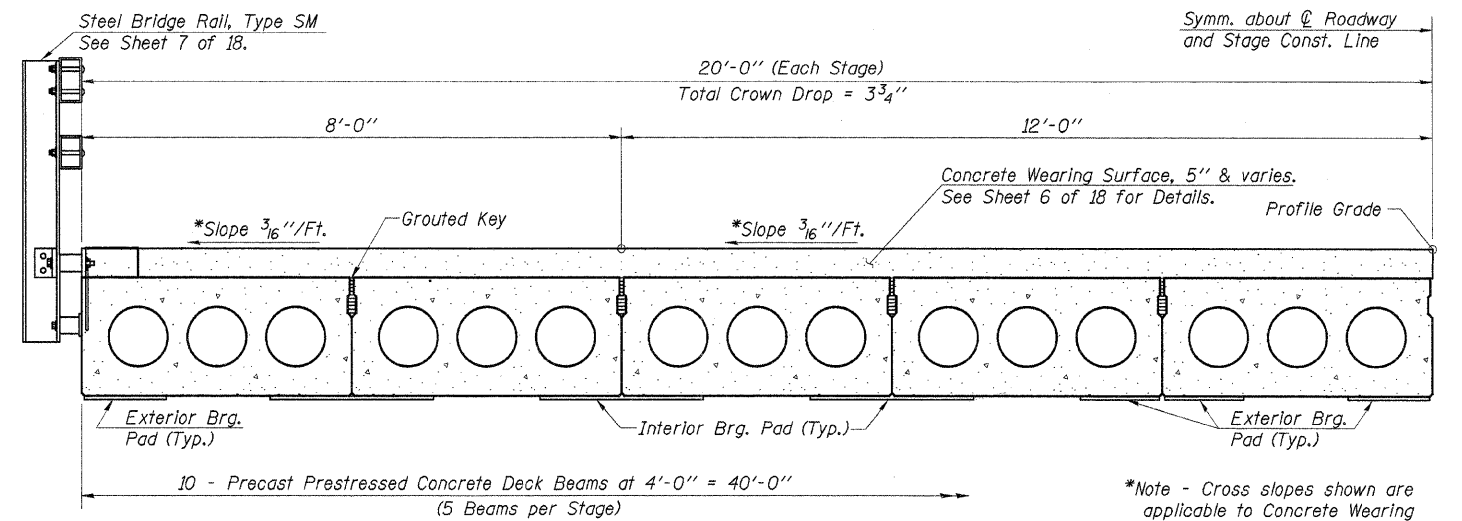
TYPICAL SECTION - INTERIOR BEAMS

14-1/2" ϕ Strands, Each Strand Stressed to 30,900 Lbs.
6-Strands 1 3/4" up, 8-Strands 3/4" up

Note:
Place strands symmetrically about ϕ of beam.



PLAN

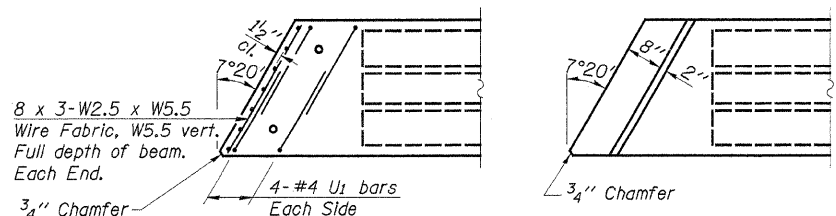


HALF CROSS SECTION

*Note - Cross slopes shown are applicable to Concrete Wearing Surface.

NOTES

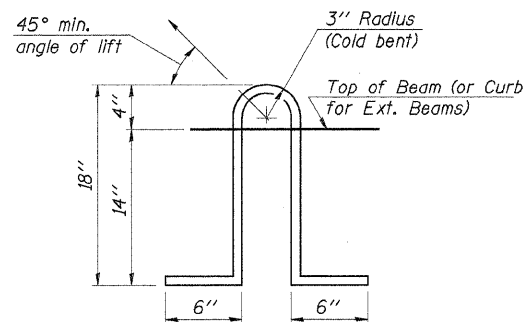
- Prestressing steel shall be uncoated high strength, low relaxation 7-wire strand, Grade 270. The nominal diameter shall be 1/2" and the nominal cross-sectional area shall be 0.153 sq. in. Lifting loops shall be 2 - 1/2" ϕ -270 ksi strands, as shown.
- The 1" ϕ rods in the transverse tie assembly shall be tightened to a snug fit and the threads set. Pockets that receive transverse tie bar on outside shall be filled with grout after transverse tie assembly is in place.
- Non prestressing steel shall conform to AASHTO M-31 or M-322 Grade 60.
- The bearing seat surfaces shall be adjusted by shimming to assure firm and even bearing. Two 1/8" fabric adjusting shims of the dimensions of the Exterior Bearing Pad shall be provided for each bearing.
- Keyway surfaces shall be cleaned to remove form oil or other bond breaking material prior to shipment of the beams. Cleaning shall be done by sandblasting the keyway areas between top of the beam and the bottom edge of the key.
- Corrosion Inhibitor, as covered in the Special Provisions, shall be used in the concrete for precast prestressed concrete deck beams.
- Required Release Strength, f'ci, shall be 4,000 p.s.i.



AT FIXED END

AT EXPANSION END

PLAN END OF BEAM



LIFTING LOOP DETAIL

Rehabilitation Project

DESIGNED	A.R.K.
CHECKED	P.S.L. & F.J.S.
DRAWN	S.A.P., K.T.R. & J.P.S.
CHECKED	A.R.K. & F.J.S.

Work this Sheet with Sheets 5 & 6 of 18.

SUPERSTRUCTURE

U.S. RTE. 45/52 OVER
SOUTH BRANCH ROCK CREEK
F.A.P. RTE. 330 - SECTION 16BR
KANKAKEE COUNTY
STA. 356+17.50 - STR. NO. 046-0047

4440 ASH GROVE
SPRINGFIELD, IL. 62707
(217) 793-8600
ossinc@amvid.com

OZYURT AND STONE, INC.
CONSULTING ENGINEERS

JOB NO.: 0306.3
FILE: SUPER10DGW
DATE: 08-04-04