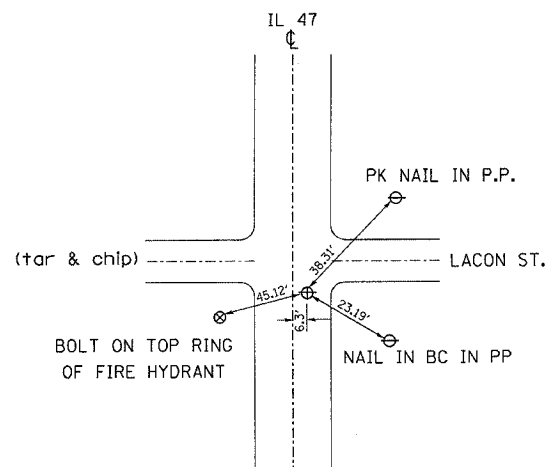


F.A.P. R.T.E.	SECTION	COUNTY	TOTAL SHEETS	SHEET NO.
326	124RS-6, 125RS-3 & 1	LIVINGSTON	15	10

STA.	TO STA.
FED. ROAD DIST. NO.	ILLINOIS
FED. AID PROJECT	

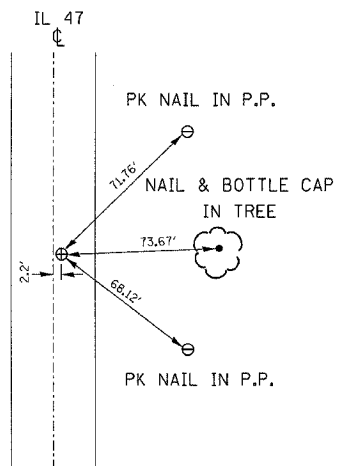
CONTRACT #66459



Brass Disk 6.30' E. of  $\text{CL}$  IL 47

N.E. CORNER SECTION 9  
T. 26 N., R. 7 E.  
3rd P.M., LIVINGSTON COUNTY

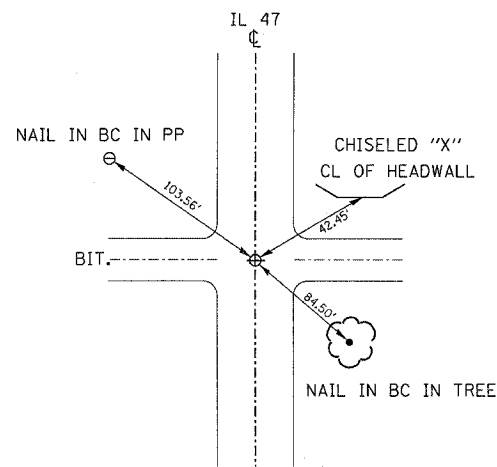
PERMANENT SURVEY MARKER TYPE 1 - 1 EACH



Brass Disk 2.2' E.  $\text{CL}$  IL 47

E. 1/4 CORNER SECTION 9  
T. 26 N., R. 7 E.  
3rd P.M., LIVINGSTON COUNTY

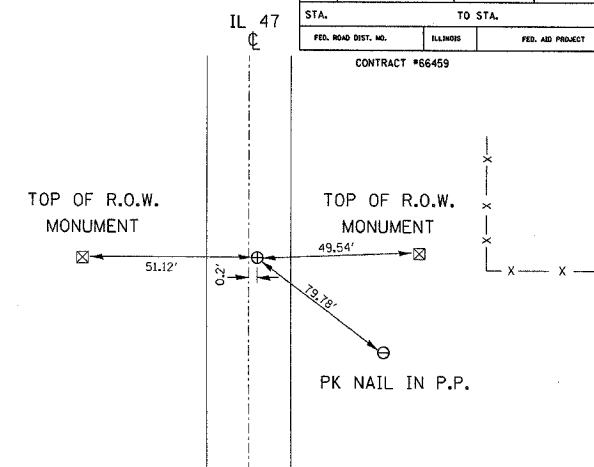
PERMANENT SURVEY MARKER TYPE 1 - 1 EACH



Brass Disk at  $\text{CL}$  IL 47

S.W. CORNER SECTION 10  
T. 26 N., R. 7 E.  
3rd P.M., LIVINGSTON COUNTY

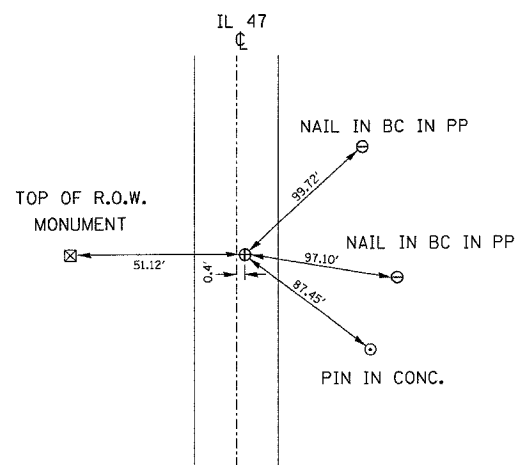
PERMANENT SURVEY MARKER TYPE 1 - 1 EACH



Brass Disk 0.2' E.  $\text{CL}$  IL 47

E. 1/4 CORNER SECTION 16  
T. 26 N., R. 7 E.  
3rd P.M., LIVINGSTON COUNTY

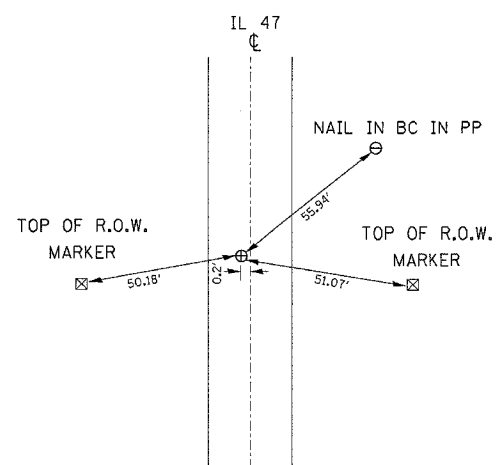
PERMANENT SURVEY MARKER TYPE 1 - 1 EACH



Brass Disk 0.4' E.  $\text{CL}$  IL 47  
AT STA. 1394+22.77

SE CORNER SECTION 16  
T. 26 N., R. 7 E.  
3rd P.M., LIVINGSTON COUNTY

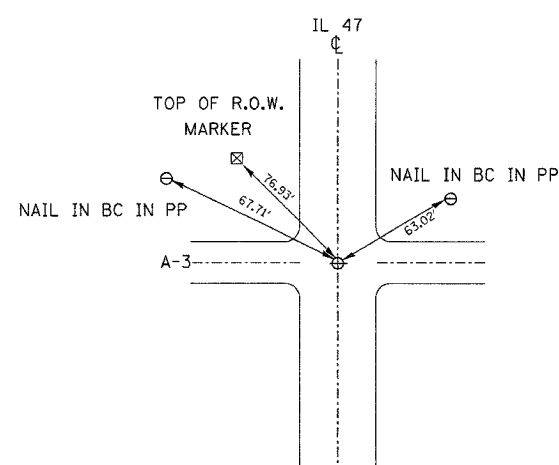
PERMANENT SURVEY MARKER TYPE 1 - 1 EACH



Brass Disk 0.4' W.  $\text{CL}$  IL 47

SE CORNER SECTION 21  
T. 26 N., R. 7 E.  
3rd P.M., LIVINGSTON COUNTY

PERMANENT SURVEY MARKER TYPE 1 - 1 EACH



Brass Disk at  $\text{CL}$  IL 47

S.E. CORNER SECTION 21  
T. 26 N., R. 7 E.  
3rd P.M., LIVINGSTON COUNTY

PERMANENT SURVEY MARKER TYPE 1 - 1 EACH

FORREST  
TOWNSHIP

ILLINOIS DEPARTMENT OF TRANSPORTATION

**TIE POINTS**

SCALE: VERT.  
HORIZ.  
DATE

DRAWN BY  
CHECKED BY