

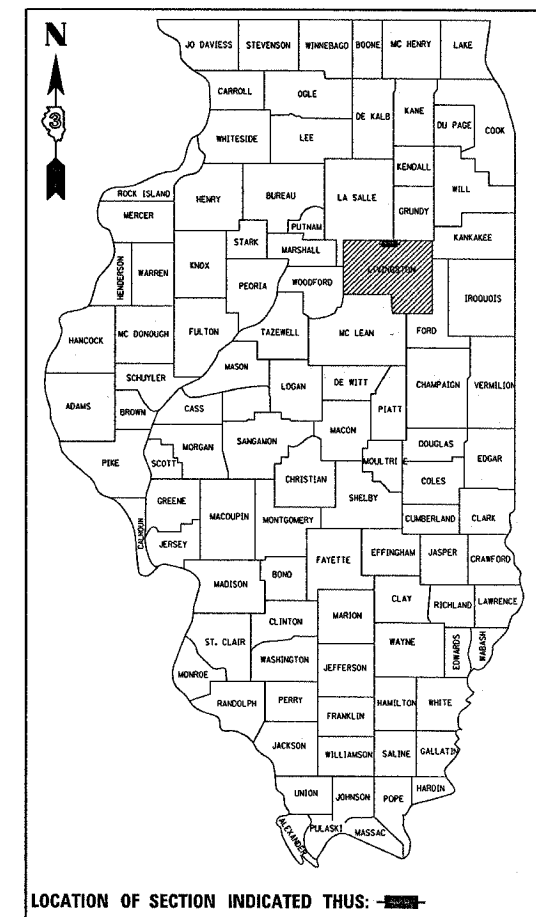
CONTRACT# 66528

F.A.P RTE	SECTION	COUNTY	TOTAL SHEETS	SHEET NO.
649		LIVINGSTON	15	1

ILLINOIS PROJECT

(16)RS-4,(17,28)RS-2

D-93-010-05



LOCATION OF SECTION INDICATED THUS: [shaded box]

FUNCTION CLASSIFICATION

RURAL MINOR ARTERIAL

2005 ADT = 2950

P.V. = 81.8% S.U. = 8.2% M.U. = 10.0%

STATE OF ILLINOIS
DEPARTMENT OF TRANSPORTATION
DIVISION OF HIGHWAYS

SUBMITTED November 9, 2004

John P. Koss DISTRICT ENGINEER

December 10, 2004
Mike Nire ENGINEER OF DESIGN AND ENVIRONMENT

December 10, 2004

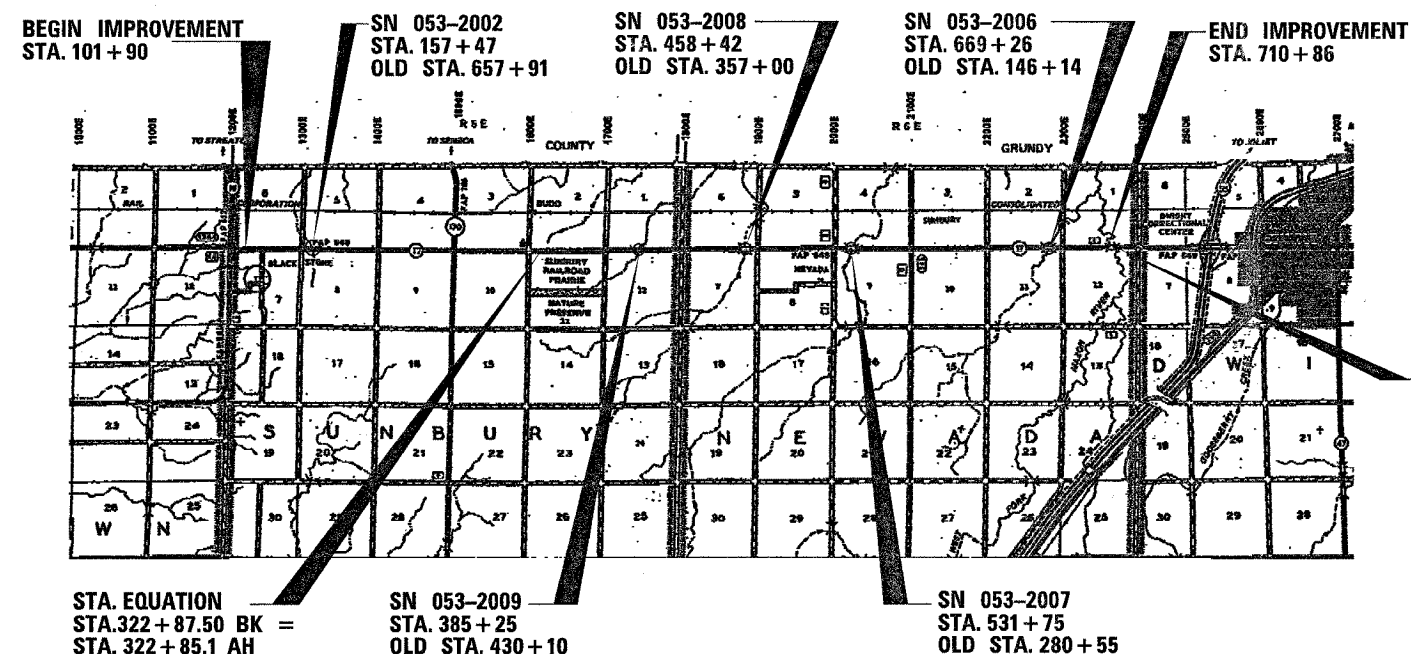
Victor Madere DIRECTOR, DIVISION OF HIGHWAYS

PRINTED BY THE AUTHORITY
OF THE STATE OF ILLINOIS

STATE OF ILLINOIS
DEPARTMENT OF TRANSPORTATION
DIVISION OF HIGHWAYS
**PLANS FOR PROPOSED
FEDERAL AID HIGHWAY**
FAP ROUTE 649 (IL 17)
SECTION (16)RS-4,(17,28)RS-2
PROJECT F-0649(012)
LIVINGSTON COUNTY

C - 93 - 002 - 05

3P RESURFACING FROM ILL 18 TO SN 053-0158



LOCATION MAP
NOT TO SCALE

GROSS LENGTH AND NET LENGTH = 60896 FT. = 11.53 MI.

INDEX OF SHEETS

- 1 COVER SHEET
- 2 GENERAL NOTES
- 3 SUMMARY OF QUANTITIES
- 4 TYPICAL SECTIONS
- 5 - 7 SCHEDULES
- 8 - 9 TIE POINTS
- 10 PROJECT LAYOUT
- 11 - 12 PAVEMENT MARKING - IL 17/IL 170
- 13 - 15 DETAILS

HIGHWAY STANDARDS

- 000001-04 STANDARD SYMBOLS, ABBREVIATIONS AND PATTERNS
- 406201 MAILBOX TURNOUT
- 635006-02 REFLECTOR AND TERMINAL MARKER PLACEMENT
- 667101 PERMANENT SURVEY MARKERS
- 701001-01 OFF-ROAD OPERATIONS 2L, 2W, MORE THAN 4.5 m (15') AWAY
- 701006-02 OFF-ROAD OPERATIONS 2L, 2W, 4.5 m (15') TO 600 mm (24") FROM PAVEMENT EDGE
- 701201-02 LANE CLOSURE, 2L, 2W, DAY ONLY, FOR SPEEDS ≥ 45 MPH
- 701301-02 LANE CLOSURE, 2L, 2W, SHORT TIME OPERATIONS
- 701306-01 LANE CLOSURE, 2L, 2W, SLOW MOVING OPERATIONS DAY ONLY, FOR SPEEDS ≥ 45 MPH
- 701311-02 LANE CLOSURE, 2L, 2W, MOVING OPERATIONS - DAY ONLY
- 702001-05 TRAFFIC CONTROL DEVICES
- 781001-02 TYPICAL APPLICATIONS RAISED REFLECTIVE PAVEMENT MARKERS

FULL SIZE PLANS HAVE BEEN PREPARED USING STANDARD ENGINEERING SCALES, REDUCED SIZED PLANS WILL NOT CONFORM TO STANDARD SCALES, IN MAKING MEASUREMENTS ON REDUCED PLANS, THE ABOVE SCALES MAY BE USED.

MICROFILMED _____
 REEL NUMBER _____
 AWARDED _____
 RESIDENT ENGINEER _____
 AS BUILT CHANGES WERE MADE
 ON THE FOLLOWING SHEETS _____

JULIE 1-800-892-0123

DISTRICT 3 NO. (815) 434-6131

PROJECT ENGINEER: RICK POWELL
UNIT CHIEF: BRAD DUNCAN
TOWNSHIP: SUNBURY, NEVADA

CONTRACT NO. 66528