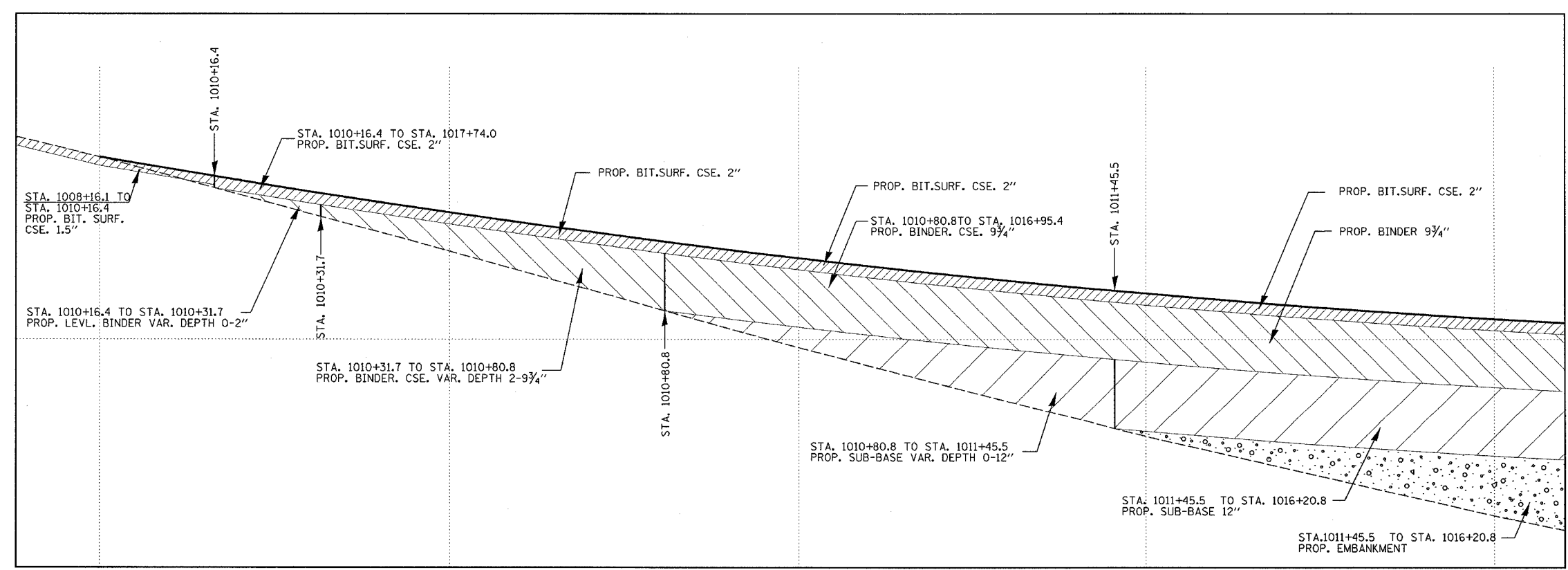
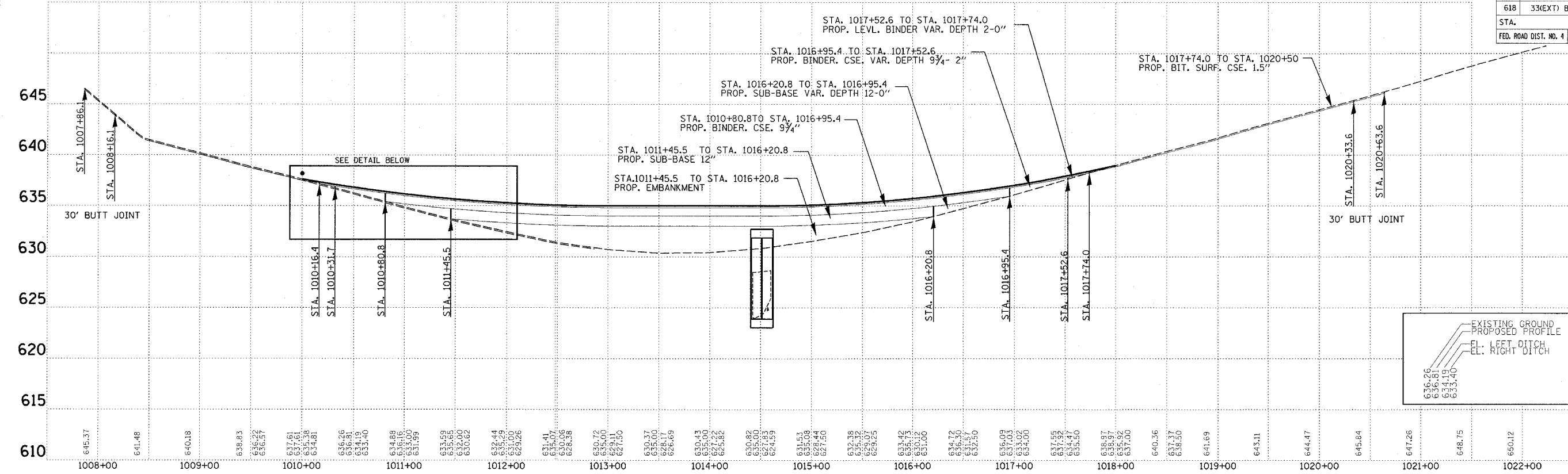


68266

F.A.P. RTE.	SECTION	COUNTY	TOTAL SHEETS	SHEET NO.
618	33(EXT) BR	MCDONOUGH	63	14
STA.		TO STA.		
FED. ROAD DIST. NO. 4		ILLINOIS		FED. AID PROJECT



REVISIONS		ILLINOIS DEPARTMENT OF TRANSPORTATION	
NAME	DATE		
		IL 41 OVER KEPPEL CREEK	
		PROPOSED PROFILE CORRECTION DETAIL	
		SCALE: VERT. 1"=10'	DRAWN BY
		HORIZ. 1"=40'	CHECKED BY
		DATE	