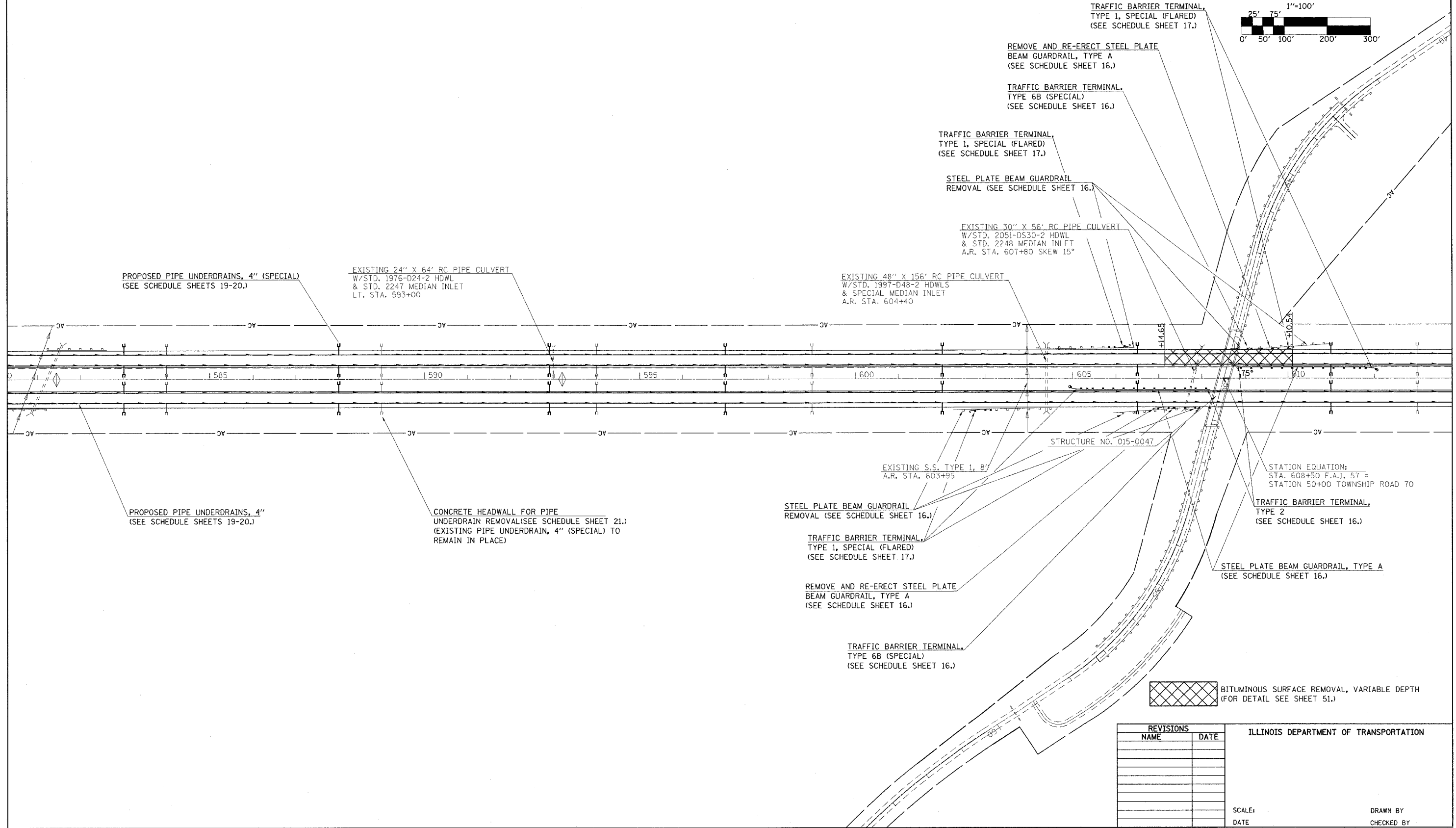
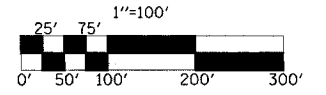
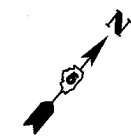


T12N, R8E, SECTION 31

F.A.I. RTE.	SECTION	COUNTY	TOTAL SHEETS	SHEET NO.
57	**	**	76	37
STA. 581+00		TO STA. 613+00		
FED. ROAD DIST. NO.		ILLINOIS FED. AID PROJECT		
CONTRACT NO. 70028				
* (15,18-20) RS-2 (15-22) RS-2				
**COLES & CUMBERLAND				



BITUMINOUS SURFACE REMOVAL, VARIABLE DEPTH
 (FOR DETAIL SEE SHEET 51.)

REVISIONS	
NAME	DATE

ILLINOIS DEPARTMENT OF TRANSPORTATION

SCALE: _____

DATE _____

DRAWN BY _____

CHECKED BY _____